

# CALIFORNIA REGIONAL WATER QUALITY CONTROL BOARD CENTRAL VALLEY REGION

**Fresno Office**  
1685 "E" St.  
Fresno, CA 93706-2007

**Sacramento Office (Main)**  
11020 Sun Center Dr. #200  
Rancho Cordova, CA 95670-6114

**Redding Office**  
364 Knollcrest Dr. #205  
Redding, CA 96002

[Central Valley Water Board Website](https://www.waterboards.ca.gov/centralvalley) (https://www.waterboards.ca.gov/centralvalley)

---

## WASTE DISCHARGE REQUIREMENTS ORDER R5-2020-0032

---



### ORDER INFORMATION

**Order Type:** Waste Discharge Requirements (WDRs)  
**Status:** Adopted  
**Program:** Non-15 Discharges to Land  
**Region 5 Office:** Fresno  
**Discharger(s):** Gerawan Farming, Inc.  
**Facility:** Plant 3 Kerman Fruit Packing Facility  
**Address:** 14044 W. Central Avenue, Kerman  
**County:** Fresno County

---

### CERTIFICATION

I, PATRICK PULUPA, Executive Officer, hereby certify that the following is a full, true, and correct copy of the order adopted by the California Regional Water Quality Control Board, Central Valley Region, on 4 June 2020.

Patrick Pulupa  
Digitally signed by Patrick Pulupa  
Date: 2020.06.29 15:35:51  
-07'00'  
Water Boards

---

PATRICK PULUPA,  
Executive Officer

**TABLE OF CONTENTS**

**Table Index ..... iii**

**Glossary ..... iv**

**Findings ..... 1**

    Introduction ..... 1

    Existing Facility and Discharge ..... 1

    Water Reuse Considerations ..... 4

    Site Specific Conditions ..... 4

    Groundwater Conditions ..... 5

    Legal Authorities ..... 6

    Basin Plan Implementation ..... 7

    Salt and Nitrate Control Programs Reopener ..... 8

    Compliance with the Antidegradation Policy ..... 9

    California Environmental Quality Act (CEQA) ..... 12

    Other Regulatory Considerations ..... 12

    Scope of Order ..... 13

    Procedural Matters ..... 14

**Requirements ..... 14**

    A. Discharge Prohibitions ..... 14

    B. Effluent Limitations ..... 15

    C. Flow Limitations ..... 15

    D. Discharge Specifications ..... 15

    E. Groundwater Limitations ..... 17

WASTE DISCHARGE REQUIREMENTS ORDER R5-2020-0032  
GERAWAN FARMING, INC.  
PLANT 3 KERMAN FRUIT PACKING FACILITY  
FRESNO COUNTY  
**TABLE INDEX**

F. Land Application Area Specifications ..... 17

G. Solids Disposal Specifications ..... 18

H. Provisions ..... 19

**Attachment A—Site Map..... 1**

**Attachment B—Facility Map..... 1**

**Attachment C ..... 1**

**Information Sheet..... 1**

WASTE DISCHARGE REQUIREMENTS ORDER R5-2020-0032  
 GERAWAN FARMING, INC.  
 PLANT 3 KERMAN FRUIT PACKING FACILITY  
 FRESNO COUNTY  
**GLOSSARY**

## GLOSSARY

<b>Antidegradation Policy</b> .....	Statement of Policy with Respect to Maintaining High Quality Waters in California, State Water Board Resolution 68-16
<b>APN</b> .....	Assessor parcel number
<b>Basin Plan</b> .....	Water Quality Control Plan for Tulare Lake Basin
<b>bgs</b> .....	Below Ground Surface
<b>BOD<sub>[5]</sub></b> .....	[Five-Day] Biochemical Oxygen Demand at 20° Celsius
<b>BPTC</b> .....	Best Practicable Treatment and Control
<b>CEQA</b> .....	California Environmental Quality Act, Public Resources Code section 21000 et seq.
<b>CEQA Guidelines</b> .....	California Code of Regulations, Title 14, section 15000 et seq.
<b>C.F.R.</b> .....	Code of Federal Regulations
<b>COC[s]</b> .....	Constituent[s] of Concern
<b>DO</b> .....	Dissolved Oxygen
<b>DTSC</b> .....	California Department of Toxic Substances Control
<b>DWR</b> .....	California Department of Water Resources
<b>EC</b> .....	Electrical Conductivity
<b>EIR</b> .....	Environmental Impact Report
<b>FDS</b> .....	Fixed Dissolved Solids
<b>FEMA</b> .....	Federal Emergency Management Agency
<b>gpd</b> .....	Gallons per day
<b>IPP</b> .....	Industrial Pretreatment Program
<b>LAA</b> .....	Land Application Area
<b>lbs/ac/yr</b> .....	Pounds per Acre per Year
<b>µg/L</b> .....	Micrograms per Liter
<b>µmhos/cm</b> .....	Micromhos per Centimeter
<b>MG[D]</b> .....	Million Gallons [per Day]
<b>mg/L</b> .....	Milligrams per Liter

WASTE DISCHARGE REQUIREMENTS ORDER R5-2020-0032  
 GERAWAN FARMING, INC.  
 PLANT 3 KERMAN FRUIT PACKING FACILITY  
 FRESNO COUNTY  
**GLOSSARY**

<b>msl</b> .....	Mean Sea Level
<b>MRP</b> .....	Monitoring and Reporting Program
<b>MW</b> .....	Monitoring Well
<b>MCL</b> .....	Maximum Contaminant Level per Title 22
<b>mJ/cm<sup>2</sup></b> .....	Millijoules per Square Centimeter
<b>ORP</b> .....	Oxygen Reduction Potential
<b>N</b> .....	Nitrogen
<b>ND</b> .....	Non-Detect
<b>NE</b> .....	Not Established
<b>NM</b> .....	Not Monitored
<b>Recycled Water Policy</b> .....	<i>Policy for Water Quality Control for Recycled Water, State Water Board Resolution 2009-0011, as amended per Resolutions 2013-0003 and 2018-0057</i>
<b>R[O]WD</b> .....	Report of Waste Discharge
<b>RCRA</b> .....	Resource Conservation and Recovery Act
<b>SPRRs</b> .....	Standard Provisions and Reporting Requirements
<b>SERC</b> .....	State Emergency Response Commission
<b>TDS</b> .....	Total Dissolved Solids
<b>Title 22</b> .....	California Code of Regulations, Title 22
<b>Title 23</b> .....	California Code of Regulations, Title 23
<b>Title 27</b> .....	California Code of Regulations, Title 27
<b>TKN</b> .....	Total Kjeldahl Nitrogen
<b>TTHMs</b> .....	Total Trihalomethanes
<b>Unified Guidance</b> .....	Statistical Analysis of Groundwater Monitoring Data at RCRA Facilities, Unified Guidance (USEPA, 2009)
<b>USEPA</b> .....	United States Environmental Protection Agency
<b>VOC[s]</b> .....	Volatile Organic Compound[s]
<b>WDRs</b> .....	Waste Discharge Requirements
<b>WQO[s]</b> .....	Water Quality Objective[s]

WASTE DISCHARGE REQUIREMENTS ORDER R5-2020-0032  
GERAWAN FARMING, INC.  
PLANT 3 KERMAN FRUIT PACKING FACILITY  
FRESNO COUNTY

## FINDINGS

The Central Valley Regional Water Quality Control Board (Central Valley Water Board) hereby finds as follows:

### Introduction

1. On 21 June 2019, EMKO Environmental, Inc. submitted a RWD, on behalf of Gerawan Farming, Inc. (Gerawan or Discharger) to apply for WDRs for the Plant 3 Kerman Fruit Packing Facility (Plant 3 or Facility) in Fresno County as shown in **Attachment A** (Site Map). Revised RWDs with updated water balances were submitted on 23 July and 28 August 2019.
2. Plant 3 is at 14044 West Central Avenue in Kerman on a portion of APN 025-050-83S as shown in **Attachment B** (Facility Map). Plant 3 packs whole peaches, plums, and nectarines. The packing process includes washing, sorting, and grading the fruit, and packing occurs from about early May through late September or approximately 130 days.
3. As the Facility's owner and operator, the Discharger is responsible for compliance with the WDRs prescribed in this Order.
4. The following materials are attached and incorporated as part of this Order:
  - a. Attachment A – Site Map
  - b. Attachment B – Facility Map
  - c. Attachment C – Requirements for Monitoring Well Installation Workplans and Monitoring Well Installation Reports
  - d. Standard Provisions and Reporting dated 1 March 1991 (SPRR's)
  - e. Information Sheet
5. Also attached is **Monitoring and Reporting Program R5-2020-0032** (MRP), which requires monitoring and reporting for discharges regulated under these WDRs.

### Existing Facility and Discharge

6. Wastewater generated by the fruit processing at Plant 3 is discharged to an unlined, 6-million-gallon evaporation/percolation pond, constructed below grade with a 24-inch above grade earthen berm around the edges of the pond. The pond is about 350 in length, 160 feet wide, and has a depth of about 30 feet with 2:1 side walls.

WASTE DISCHARGE REQUIREMENTS ORDER R5-2020-0032  
GERAWAN FARMING, INC.  
PLANT 3 KERMAN FRUIT PACKING FACILITY  
FRESNO COUNTY

7. The amount of water used at the Facility varies from about 14,000 to 130,000 gpd. The RWD indicates the average discharge will be about 90,000 gpd of wastewater or 11.7 million gallons per year. The RWD conservatively assumes that 100 percent of the water used becomes wastewater.
8. According to the RWD, fruit processing wastewater is not comingled with any other water from the Facility other than rainfall from the roof of the Facility.
9. Chemicals used in the wash process include:
  - Sodium hypochlorite (100 parts per million [ppm] total chlorine in water);
  - Citric acid (pH adjustment); and
  - Fruit wash soap (peaches only).
10. The following products are applied to the fruit following washing:
  - A mineral oil-based fruit coating; and
  - Postharvest fungicide (fludioxonil and propiconazole).
11. Several cleaners and sanitizers are used daily for the equipment as listed below:
  - Quaternary ammonium;
  - Isopropyl alcohol;
  - Chlorine based sanitizers;
  - Detergents; and
  - Neutral soaps.
12. Source water for Plant 3 is provided by two onsite wells adjacent and upgradient of the evaporation/percolation pond. One well (SW-001) is at the northeast corner of the pond and the second (SW-002) is about 150 feet northeast of the pond. Both wells are 400 feet deep and are screened from 200 to 400 feet bgs. Well use is alternated every other day between the two wells. The proximity of the wells to the pond may influence water quality in these wells. The source water data in Tables 1 and 2 below are from a sample collected from the well closest to the pond (SW-001).
13. An effluent sample and a source water sample (SW-001) were collected in May 2019 and analyzed for volatile organic compounds, specifically TTHMs. An effluent sample was also collected in May 2019 and analyzed for general minerals. In June 2019, the Discharger collected both an effluent sample and a source water sample and had them analyzed for general minerals. The results are summarized in Tables 1 and 2. Constituent concentrations shown in bold exceed their respective MCLs.

WASTE DISCHARGE REQUIREMENTS ORDER R5-2020-0032  
 GERAWAN FARMING, INC.  
 PLANT 3 KERMAN FRUIT PACKING FACILITY  
 FRESNO COUNTY

**Table 1 – Source Water and Effluent Quality**

Constituent	Units	Source Water	Effluent	Effluent	MCL
Date	--	May 2019	May 2019	June 2019	--
EC	µmhos/cm	840	<b>1,100</b>	<b>1,100</b>	900/1600/2200
TDS	mg/L	<b>570</b>	<b>820</b>	<b>1,200</b>	500/1000/1500
FDS	mg/L	440	---	610	---
Chloride	mg/L	43	110	130	250/500/600
Sodium	mg/L	74	140	140	---
Sulfate	mg/L	37	45	51	250/500/600
Alkalinity	mg/L	290	320	250	---
Bicarbonate	mg/L	290	320	250	---
pH	s.u.	7.7	7.9	7.2	---
Fluoride	mg/L	<0.1	0.1	1.1	---
BOD	mg/L	<1.0	---	380	---
Nitrate (as N)	mg/L	<b>11</b>	<b>13</b>	<b>11</b>	10
TKN	mg/L	<1.0	---	5.1	---
Total Nitrogen	mg/L	11	---	16.1	---
Ammonia (as N)	mg/L	<0.1	---	0.91	---

**Table 2 - Plant 3 Source Water and Effluent TTHM Results**

Constituent	Units	Source Water	Effluent	MCL
Date Sampled	---	5/15/19	5/8/19	---
TTHMs	µg/L	26	<b>240</b>	80
- Dibromochloromethane	µg/L	<0.5	5.3	---
- Bromodichloromethane	µg/L	<0.5	15	---
- Chloroform	µg/L	26	220	---

14. The reported effluent monitoring data shows EC results exceed the recommended secondary MCL of 900 µmhos/cm, but are less than the upper MCL of 1,600 µmhos/cm. The effluent TDS result from June 2019 (1,200 mg/L) exceeds both the recommended MCL of 500 mg/L and the upper MCL of 1,000 mg/L. Nitrate (as N) results exceed the primary MCL of 10 mg/L, but the results are similar to those detected in the source water sample. However, the one effluent total nitrogen result shows a net increase of 5 mg/L (likely all in the form of TKN) compared to source water.



WASTE DISCHARGE REQUIREMENTS ORDER R5-2020-0032  
GERAWAN FARMING, INC.  
PLANT 3 KERMAN FRUIT PACKING FACILITY  
FRESNO COUNTY

15. Table 2 shows that effluent TTHMs concentrations exceed the MCL of 80 µg/L with the majority of the TTHMs concentration comprised of chloroform (220 µg/L). Chloroform was also detected in the source water sample (26 µg/L).

### **Water Reuse Considerations**

16. In a 20 August 2019 letter to Gerawan, Central Valley Water Board staff requested Gerawan evaluate the potential to land apply wastewater in the area surrounding Plant 3. Gerawan submitted a 30 September 2019 letter indicating wastewater could not be used for land application of the surrounding orchards due the Facility's fluctuating wastewater volumes. The variability in flow reportedly would make it difficult for wastewater to be used for irrigation purposes. In addition, Gerawan notes that the irrigation system for the surrounding orchards is also used for foliar and fruit spray applications and the wastewater cannot be used for that purpose due to potential "biological hazards." While this Order does not specifically require Gerawan to reuse the Facility's wastewater, Provision H.6 allows the Gerawan to pursue reuse (or pond lining) in lieu of installing a groundwater monitoring well network.

### **Site Specific Conditions**

17. The site elevation is about 210 feet above mean seal level and the natural land surface slopes gently to the southwest. The nearest surface waters are the Blan Waste Canal about 0.5 miles northwest of the pond and the Dry Creek Canal about 1.25 miles west of the pond.
18. Plant 3 is in an arid climate characterized by hot dry summers and mild winters. The rainy season generally extends from November through March. Occasional rains occur during the spring and fall months, but summer months are dry. Average annual precipitation and evaporation in the discharge area are about 11 inches and 63 inches, respectively, according to information published by California Department of Water Resources (DWR).
19. Land uses in the vicinity of Plant 3 are primarily agricultural with some dairy and confined animal operations as well. The City of Kerman is about three miles north of Plant 3. The primary crops grown within five miles of the Facility include cotton, alfalfa, corn (forage), almonds, grapes, dry beans, and corn according to DWR land use data published in 1994. Irrigation water is supplied primarily by groundwater, and Plant 3 is within the boundaries of the Fresno Irrigation District.
20. Soils in the vicinity of Plant 3 are predominately Hesperia sandy loam according to the Web Soil Survey published by the United States Department of Agriculture,

WASTE DISCHARGE REQUIREMENTS ORDER R5-2020-0032  
 GERAWAN FARMING, INC.  
 PLANT 3 KERMAN FRUIT PACKING FACILITY  
 FRESNO COUNTY

Natural Resources Conservation Service. Hesperia sandy loam and has a land capacity classification of 3s. Soils with “Class 3” have severe limitations that restrict the choice of plant or that require special conservation practices. The subclass “s” indicates that soils have limitations within the root zone, such as shallowness of the root zone, a high content of stones, a low available water capacity, low fertility, and excessive salinity or sodicity.

21. According to the Federal Emergency Management Agency (FEMA) [Flood Insurance Rate Map](https://msc.fema.gov/portal) (https://msc.fema.gov/portal), Plant 3 is in Zone X. This area is outside the 500-year floodplain.

### Groundwater Conditions

22. Available groundwater data for the Facility is limited. Limited groundwater data is available from the previously mentioned source water samples collected in May and June 2019. According to the [California DWR Groundwater Information Center Interactive Map Application](https://gis.water.ca.gov/app/bbat/) (https://gis.water.ca.gov/app/bbat/), depth to groundwater in the vicinity of the Facility is approximately 160 feet bgs. Regional groundwater flow direction is to the south/southwest. Furthermore, regional groundwater quality data can be found on the [State Water Resources Control Board’s Groundwater Ambient Monitoring and Assessment Program \(GAMA\) Information System](https://gamagroundwater.waterboards.ca.gov/gama/gamamap/public/) (https://gamagroundwater.waterboards.ca.gov/gama/gamamap/public/). Using the GAMA Information System, several wells are in the vicinity of Plant 3. Well 14S18E0B0001M (E0B0001M) is located about a mile northwest and upgradient of Plant 3 and well 14S18E29C001M (E29C001M) is about 0.75 miles north of Plant 3. The GAMA Information System had data for both wells dating from 7 September 1956 through 30 April 1984, and the results are summarized in Table 3.

**Table 3 - Plant 3 Source Water and Historical Regional Groundwater Results**

Constituent/ Parameter	Units	Well E29C001M	Well E0B0001M	Well E0B0001M	Source Water
Date Sampled	--	9/7/56	7/26/73	4/30/84	6/3/19
Alkalinity	mg/L	163	167	186	290
Chloride	mg/L	52	97	85	43
EC	µmhos/cm	528	789	<b>958</b>	840
Nitrate (as N)	mg/L	2.2	7.7	10	<b>11</b>
pH	s.u.	7.9	7.8	7.7	7.7
Sulfate	mg/L	12	---	49	37
Sodium	mg/L	29	62	64	74
TDS	mg/L	---	---	<b>610</b>	<b>570</b>

WASTE DISCHARGE REQUIREMENTS ORDER R5-2020-0032  
GERAWAN FARMING, INC.  
PLANT 3 KERMAN FRUIT PACKING FACILITY  
FRESNO COUNTY

23. The results indicate groundwater quality was of good quality in 1956 with no exceedance of water quality objectives reported. However, based on this data, water quality concentrations for salt and nitrate appear to have increased over the decades. EC and TDS concentrations exceeded their respective MCLs in the 1984 sample, and nitrate and TDS concentrations exceeded their respective MCLs in the 2019 source water sample.

### Legal Authorities

24. This Order is adopted pursuant to Water Code section 13263, subdivision (a), which provides in pertinent part as follows:

*The regional board, after any necessary hearing, shall prescribe requirements as to the nature of any proposed discharge, existing discharge, or material change in an existing discharge..., with relation to the conditions existing in the disposal area or receiving waters upon, or into which, the discharge is made or proposed. The requirements shall implement any relevant water quality control plans that have been adopted, and shall take into consideration the beneficial uses to be protected, the water quality objectives reasonable required for that purpose, other waste discharges, the need to prevent nuisance, and the provisions of Section 13241.*

25. Compliance with section 13263, subdivision (a), including implementation of applicable water quality control plans, is discussed in the findings below.
26. The ability to discharge waste is a privilege, not a right, and adoption of this Order shall not be construed as creating a vested right to continue discharging waste. (Wat. Code, § 13263, subd. (g).)
27. This Order and its associated Monitoring and Reporting Program (MRP) are also adopted pursuant to Water Code section 13267, subdivision (b)(1), which provides as follows:

*[T]he regional board may require that any person who has discharged, discharges, or is suspected of having discharged or discharging, or who proposes to discharge waste ... shall furnish, under penalty of perjury, technical or monitoring program reports which the regional board requires. The burden, including costs, of these reports shall bear a reasonable relationship to the need for the report and the benefits to be obtained from the reports. In requiring those reports, the regional board shall provide the person with a written explanation with regard to the need for the reports, and shall*

WASTE DISCHARGE REQUIREMENTS ORDER R5-2020-0032  
GERAWAN FARMING, INC.  
PLANT 3 KERMAN FRUIT PACKING FACILITY  
FRESNO COUNTY

*identify the evidence that supports requiring that person to provide the reports.*

28. The reports required under this Order, as well as under the separately issued MRP, are necessary to verify and ensure compliance with WDRs. The burden associated with such reports is reasonable relative to the need for their submission.

### **Basin Plan Implementation**

29. Pursuant to Water Code section 13263, subdivision (a), WDRs must “implement any relevant water quality control plans..., and shall take into consideration the beneficial uses to be protected, the water quality objectives reasonably required for that purpose, other waste discharges, the need to prevent nuisance, and the provisions of Section 13241.”
30. This Order implements the Central Valley Water Board’s Water Quality Control Plan for the Tulare Lake Basin (Basin Plan), which designates beneficial uses for surface water and groundwater and establishes water quality objectives (WQOs) necessary to preserve such beneficial uses. (See Wat. Code, § 13241 et seq.)
31. The discharge is to a pond and any surface drainage would be to Valley Floor Waters. The beneficial uses of Valley Floor Waters within the subject hydrologic area (Fresno Hydrologic Area No. 551.30) include the following: agricultural supply (AGR); industrial service supply (IND); industrial process supply (PRO); water contact recreation (REC-1); non-water contact recreation (REC-2); warm freshwater habitat (WARM); wildlife habitat (WILD); groundwater recharge (GWR); and preservation and enhancement of rare, threatened, and endangered species (RARE).
32. Per the Basin Plan, beneficial uses of underlying groundwater at the Facility and LAA are as follows: municipal and domestic supply (MUN); agricultural supply (AGR); industrial service supply (IND); industrial process supply (PRO); water contact recreation (REC-1), and wildlife habitat (WILD).
33. The Basin Plan establishes narrative water quality objectives for chemical constituents, taste and odors, and toxicity. The toxicity objective, in summary, requires that groundwater be maintained free of toxic substances in concentrations that produce detrimental physiological responses in human, plant, animal, or aquatic life associated with designated beneficial uses.

WASTE DISCHARGE REQUIREMENTS ORDER R5-2020-0032  
GERAWAN FARMING, INC.  
PLANT 3 KERMAN FRUIT PACKING FACILITY  
FRESNO COUNTY

34. The Basin Plan's narrative WQO's for chemical constituents require MUN-designated water to at least meet the MCLs specified in California Code of Regulations, title 22 (Title 22). The Basin Plan recognizes that the Central Valley Water Board may apply limits more stringent than MCLs to ensure that waters do not contain chemical constituents in concentrations that adversely affect beneficial uses.
35. The narrative WQO for toxicity provides that groundwater shall be maintained free of toxic substances in concentrations producing detrimental physiological responses in human, animal, plant or aquatic life associated with designated beneficial uses.
36. Quantifying a narrative WQO requires a site-specific evaluation of those constituents that have the potential to impact water quality and beneficial uses. The Basin Plan states that when compliance with a narrative objective is required to protect specific beneficial uses, the Central Valley Water Board will, on a case-by-case basis, adopt numerical limitations to implement the narrative objective.
37. In the absence of specific numerical water quality limits, the Basin Plan methodology is to consider any relevant published criteria. General salt tolerance guidelines, such as *Water Quality of Agriculture* by Ayers and Westcot and similar references indicate that yield reductions in nearly all crops are not evident when irrigation water has an electrical conductivity (EC) of less than 700  $\mu\text{mhos/cm}$ . There is, however, an eight- to ten-fold range in salt tolerance for agricultural crops and the appropriate salinity values to protect agriculture in the Central Valley are considered on a case-by-case basis. It is possible to achieve full yield potential with groundwater EC up to 3,000  $\mu\text{mhos/cm}$ , if the proper leaching fraction is provided to maintain soil salinity within the tolerance of the crop.

#### **Salt and Nitrate Control Programs Reopener**

38. The Central Valley Water Board adopted Basin Plan amendments incorporating new programs for addressing ongoing salt and nitrate accumulation in the Central Valley at its 31 May 2018 Board Meeting. The Basin Plan Amendments were conditionally approved by the State Water Board on 16 October 2019 and the Office of Administrative Law on 15 January 2020.
39. For nitrate, dischargers that are unable to comply with stringent nitrate requirements will be required to take on alternate compliance approaches that involve providing replacement drinking water to persons whose drinking water is affected by nitrates. Dischargers could comply with the new nitrate program either

WASTE DISCHARGE REQUIREMENTS ORDER R5-2020-0032  
GERAWAN FARMING, INC.  
PLANT 3 KERMAN FRUIT PACKING FACILITY  
FRESNO COUNTY

individually or collectively with other dischargers. For salinity, dischargers that are unable to comply with stringent salinity requirements would instead need to meet performance-based requirements and participate in a basin-wide effort to develop a long-term salinity strategy for the Central Valley. As these strategies are implemented, the Central Valley Water Board may find it necessary to modify the requirements of these WDRs to ensure the goals of the Salt and Nitrate Control Programs are met.

40. Pursuant to the Basin Plan amendments, dischargers will receive a Notice to Comply with instructions and obligations for the Salt Control Program within one year of the effective date of the amendments (17 January 2020). Upon receipt of the Notice to Comply, the District will have no more than six months to inform the Central Valley Water Board of their choice between Option 1 (Conservative Option for Salt Permitting) or Option 2 (Alternative Option for Salt Permitting). For the Nitrate Control Program, Plant 3 falls within Groundwater Basin 5-22.08 (San Joaquin Valley – Kings), a Priority 1 Basin. Dischargers within a Priority 1 Basin will receive a Notice to Comply for the Nitrate Control Program within one year of the Basin Plan Amendments becoming effective (17 January 2020).

#### **Compliance with the Antidegradation Policy**

41. The *Statement of Policy with Respect to Maintaining High Quality Waters in California*, State Water Board Resolution 68-16 (Antidegradation Policy), which is incorporated as part of the Basin Plan, prohibits the Central Valley Water Board from authorizing degradation of “high quality waters” unless it is shown that such degradation: (1) will be consistent with the maximum benefit to the people of California; (2) will not unreasonably affect beneficial uses, or otherwise result in water quality less than as prescribed in applicable policies; and (3) is minimized through the discharger’s best practicable treatment or control (BPTC).
42. Based on the data presented in Tables 1, 2, and 3 above, the constituents of concern that have the potential to degrade groundwater underlying Plant 3 include salinity, nitrogen, and TTHMs as discussed below.
  - a. **Salinity.** For salinity, this Order includes a performance based 12-month rolling average EC limit requiring the discharge not exceed the 12-month flow weighted average EC of the source water plus 400  $\mu\text{mhos/cm}$ . TDS and EC effluent concentrations slightly exceed their respective MCLs. Based on available data, the Facility’s operation contributes approximately 260  $\mu\text{mhos/cm}$  increase in EC and about 450 mg/L increase in TDS. The larger increase in TDS compared to EC is likely attributable to the addition of organic dissolved solids, not fixed dissolved solids in the waste stream. While



WASTE DISCHARGE REQUIREMENTS ORDER R5-2020-0032  
GERAWAN FARMING, INC.  
PLANT 3 KERMAN FRUIT PACKING FACILITY  
FRESNO COUNTY

not conclusive, this characterization appears to be confirmed with the one FDS influent and effluent sample from 2019, which only shows a net increase of approximately 170 mg/L in FDS. Nevertheless, the effluent EC appears to exceed regional groundwater EC levels. Based on the available data, the Discharger may choose to participate in the alternative salinity permitting approach for the Salt Control Program.

This Order also includes Provision H.5 requiring the Discharger to develop and implement a Salinity Reduction Study Work Plan to identify and address sources of salinity to and from the Plant 3. Furthermore, Provision H.6 requires the Discharger to develop a groundwater monitoring well network to determine the Facility's impact on underlying groundwater (or alternatively either line the evaporation/percolation pond or find land application areas [LAA] to reuse the Facility's effluent).

- b. **Nitrogen.** Nitrate (as N) effluent results in the limited two sample data set averaged 12 mg/L and source water was 11 mg/L. Both values slightly exceed the primary MCL of 10 mg/L. Furthermore, the Facility's one effluent total nitrogen result was 16 mg/L compared to 11 mg/L in the source water. As previously mentioned, the Facility is in a Priority 1 Groundwater Basin for the Nitrate Control Program and, therefore, within the next year, will receive a Notice to Comply with the Nitrate Control Program. Since effluent concentrations exceed not only the primary MCL for nitrate, but the 7.5 mg/L nitrate trigger established in the Nitrate Control Program, the Discharger may pursue the Pathway B (Management Zone) approach to comply with the program. Furthermore, Provision H.6 requires the Discharger to develop a groundwater monitoring well network to determine the Facility's impact on underlying groundwater (or alternatively either line the evaporation/percolation pond or find LAAs to reuse the Facility's effluent at).
- c. **Trihalomethanes (TTHMs).** The Discharger uses chlorine in the fruit washing process, which may produce disinfection byproducts like TTHMs. Generally, disinfection byproducts are not a significant concern for land discharges because attenuation in the soil column (primarily by anaerobic biodegradation). However, TTHMs in the effluent (240 mg/L) exceed the MCL of 80 mg/L, with chloroform comprising the majority of the TTHMs at 220 mg/L. Source water contained chloroform at 26 mg/L. While low and below the MCL, the detection in the source water sample (underlying groundwater) potentially indicates that the Facility's discharge might be contributing the TTHMs in groundwater. As part of the effort to evaluate groundwater conditions/quality both upgradient and downgradient of Plant 3, this Order contains Provision H.6 that requires the Discharger to develop a

WASTE DISCHARGE REQUIREMENTS ORDER R5-2020-0032  
GERAWAN FARMING, INC.  
PLANT 3 KERMAN FRUIT PACKING FACILITY  
FRESNO COUNTY

groundwater monitoring well network to determine the Facility's impact on underlying groundwater (or alternatively either line the evaporation/percolation pond or find LAAs to reuse the Facility's effluent at).

43. The Discharger implements, or will implement, as required by this Order, the following BPTC measures:
- a. Manual solids removal (culls) during processing;
  - b. Limited duration of discharge (early May through late September);
  - c. Compliance with the Salt and Nitrate Control Programs;
  - d. Compliance with a 12-month rolling average EC effluent limitation of 400  $\mu\text{mhos/cm}$  plus source water;
  - e. Preparation and implementation of a Salinity Reduction Study Work Plan; and
  - f. Preparation and implementation of a Groundwater Quality Evaluation Work Plan or Alternative Work Plan as described in Provision H.6.
44. The Discharger's implementation of the above-listed BPTC measures will minimize the extent of water quality degradation resulting from the Facility's continued operation.
45. Economic prosperity of valley communities and associated industry is of maximum benefit to the people of the state and, therefore, sufficient reason exists to accommodate growth and limited groundwater degradation around the Facility, provided that the terms of the Basin Plan are met. Degradation of groundwater by some typical waste constituents released with discharge from the Facility after effective source reduction, treatment and control, and considering the best efforts of the Discharger and magnitude of degradation, is of maximum benefit to the people of the state. The Facility contributes to the economic prosperity of the region by providing employment (25 year-round positions and seasonal employment of 55 to 536 people); by providing incomes for numerous aligned businesses; and by providing a tax base for local and county governments. Economic prosperity of Valley communities and associated industries is of maximum benefit to the people of the state and, therefore, sufficient reason to accommodate growth and limited groundwater degradation provided terms of the Basin Plan are met. Accordingly, to the extent that any degradation occurs as the result of the Facility's continued



WASTE DISCHARGE REQUIREMENTS ORDER R5-2020-0032  
GERAWAN FARMING, INC.  
PLANT 3 KERMAN FRUIT PACKING FACILITY  
FRESNO COUNTY

operation, such degradation is consistent with the maximum interest of the people of the State of California.

46. Based on the foregoing, the adoption of this Order is consistent with the State Water Board's Antidegradation Policy.

### **California Environmental Quality Act (CEQA)**

47. The issuance of this Order, which prescribes requirements and monitoring of waste discharges at an existing facility, with negligible or no expansion of its existing use, is exempt from the procedural requirements of the California Environmental Quality Act (CEQA), Public Resources Code section 21000 et seq., pursuant to California Code of Regulations, title 14, section 15301 (CEQA Guidelines).
48. To the extent that the construction of any new basins, ponds and/or surface impoundments are authorized under this Order, such features involve minor alterations to land, which are exempt from CEQA procedural requirements pursuant to California Code of Regulations, title 14, section 15304 (CEQA Guidelines).
49. This Order is further exempt from CEQA procedural requirements insofar as it is adopted for protection of the environment and does not authorize construction activities or the relaxation of standards allowing for environmental degradation, in accordance with California Code of Regulations, title 14, section 15308 (CEQA Guidelines).

### **Other Regulatory Considerations**

50. Pursuant to Water Code section 106.3, subdivision (a), it is "the established policy of the state that every human being has the right to safe, clean, affordable, and accessible water adequate for human consumption, cooking, and sanitary purposes." Although this Order is not subject to Water Code section 106.3, as it does not revise, adopt or establish a policy, regulation or grant criterion, (see § 106.3, subd. (b)), it nevertheless promotes the policy by requiring discharges to meet maximum contaminant levels (MCLs) for drinking water, which are designed to protect human health and ensure that water is safe for domestic use.
51. Based on the threat and complexity of the discharge, Plant 3 is determined to be classified as 2C as defined below:

WASTE DISCHARGE REQUIREMENTS ORDER R5-2020-0032  
GERAWAN FARMING, INC.  
PLANT 3 KERMAN FRUIT PACKING FACILITY  
FRESNO COUNTY

- a. Category 2 threat to water quality: “Those discharges of waste that could impair the designated beneficial uses of the receiving water, cause short-term violations of water quality objectives, cause secondary drinking water standards to be violated, or cause a nuisance.”
  - b. Category C complexity: “Any discharger for which waste discharge requirements have been prescribed pursuant to Section 13263 of the Water Code not included in Category A or Category B as described above. Included are dischargers having no waste treatment systems or that must comply with best management practices, dischargers having passive treatment and disposal systems, or dischargers having waste storage systems with land disposal.”
52. This Order, which prescribes WDRs for discharges of wastewater, is exempt from the prescriptive requirements of California Code of Regulations, title 27 (Title 27), section 20005 et seq. (See Cal. Code Regs., tit. 27, § 20090, subd. (b).)
53. Because all storm water at the Facility is collected and disposed in the onsite evaporation/percolation pond, the Discharger is not be required to obtain coverage under the *Statewide General Permit for Storm Water Discharges Associated with Industrial Activities*, State Water Board Order 2014-0057-DWQ, NPDES Permit No. CAS000001 (Industrial General Permit) at this time.

### **Scope of Order**

54. This Order is strictly limited in scope to those waste discharges, activities and processes described and expressly authorized herein.
55. Pursuant to Water Code section 13264, subdivision (a), the Discharger is prohibited from initiating the discharge of new wastes (i.e., other than those described herein), or making material changes to the character, volume and timing of waste discharges authorized herein, without filing a new Report of Waste Discharge (RWD) per Water Code section 13260.
56. Failure to file a new RWD before initiating material changes to the character, volume or timing of discharges authorized herein, shall constitute an independent violation of these WDRs.
57. This Order is also strictly limited in applicability to those individuals and/or entities specifically designated herein as “Discharger,” subject only to the discretion to designate or substitute new parties in accordance with this Order.

WASTE DISCHARGE REQUIREMENTS ORDER R5-2020-0032  
GERAWAN FARMING, INC.  
PLANT 3 KERMAN FRUIT PACKING FACILITY  
FRESNO COUNTY

### Procedural Matters

58. All of the above information, as well as the information contained in the attached Information Sheet (incorporated herein), was considered by the Central Valley Water Board in prescribing the WDRs set forth below.
59. The Discharger, interested agencies and other interested persons were notified of the Central Valley Water Board's intent to prescribe the WDRs in this Order, and provided an opportunity to submit their written views and recommendations at a public hearing. (See Wat. Code, § 13167.5.)
60. At a public meeting, the Central Valley Water Board heard and considered all comments pertaining to the discharges regulated under this Order.
61. The Central Valley Water Board will review and revise the WDRs in this Order as necessary.

### REQUIREMENTS

**IT IS HEREBY ORDERED**, pursuant to Water Code sections 13263 and 13267, that the Discharger and their agents, employees and successors shall comply with the following:

#### A. Discharge Prohibitions

1. Discharge of wastes to surface waters or surface water drainage courses is prohibited.
2. Discharge of waste classified as "hazardous," as defined in the California Code of Regulations, title 22, section 66261.1 et seq., is prohibited.
3. Treatment system bypass of untreated or partially treated waste is prohibited, except as allowed by Standard Provision E.2 of the *Standard Provisions and Reporting Requirements for Waste Discharge Requirements*, dated 1 March 1991 (SPRRs), the entirety of which is incorporated herein.
4. Discharge of waste at a location or in a manner different from that described in the Findings is prohibited.
5. Discharge of toxic substances into any wastewater treatment system or the disposal field such that biological treatment mechanisms are disrupted is prohibited.

WASTE DISCHARGE REQUIREMENTS ORDER R5-2020-0032  
GERAWAN FARMING, INC.  
PLANT 3 KERMAN FRUIT PACKING FACILITY  
FRESNO COUNTY

6. Discharge of domestic wastewater to the evaporation/percolation pond is prohibited.
7. Discharge of process wastewater (e.g., wash waster) to septic systems is prohibited.

**B. Effluent Limitations**

1. The 12-month rolling average EC of the discharge (monitored at EFF-001) shall not exceed the 12-month flow-weighted average EC of the source water plus 400  $\mu$ mhos/cm. Compliance with this effluent limitation shall be determined monthly.

**C. Flow Limitations**

1. The process wastewater discharge to the evaporation/percolation pond shall not exceed the following (monitored at EFF-001):
  - a. An annual discharge of 12.35 million gallons, or
  - b. A maximum daily flow of 130,000 gpd.

**D. Discharge Specifications**

1. No waste constituent shall be released, discharged, or placed where it will be released or discharged, in a concentration or in a mass that causes violation of the Groundwater Limitations of this Order.
2. Wastewater treatment, storage, and disposal shall not cause pollution or a nuisance as defined by Water Code section 13050.
3. The Discharger shall operate all systems and equipment to optimize the quality of the discharger.
4. The discharge shall remain within the permitted wastewater pond, conveyance structures, and the LAA (if the Discharger begins reuse of the process wastewater for irrigation crops as discussed in Provision F.1 through F.9). at all times.
5. All conveyance, treatment, storage, and disposal systems shall be designed, constructed, operated, and maintained to prevent inundation or washout due to floods with a 100-year return frequency.
6. Objectionable odors shall not be perceivable beyond the limits of the Facility at an intensity that creates or threaten to create nuisance conditions.

7. As a means of ensuring compliance with Discharge Specification D.6, the dissolved oxygen (DO) content in the upper one foot of any wastewater treatment or storage pond shall not be less than 1.0 mg/L for three consecutive sampling events. Notwithstanding the DO monitoring frequency specified in the monitoring and reporting program, if the DO in the pond is below 1.0 mg/L for any single sampling event, the Discharger shall implement daily DO monitoring of that pond until the minimum DO concentration is achieved for at least three consecutive days. If the DO in the pond is below 1.0 mg/L for three consecutive days, the Discharger shall report the findings to the Central Valley Water Board in accordance with Section B.1 of the SPRRs. The written notification shall include a specific plan to resolve the low DO results within 30 days of the first date of violation.
8. The pond and open containment structures shall be managed to prevent breeding of mosquitos or other vectors. Specifically:
  - a. An erosion control program shall be implemented to ensure that small coves and irregularities are not created around the perimeter of the water surface.
  - b. Weeds shall be minimized through control of water depth, harvesting, or herbicides.
  - c. Dead algae, vegetation, and debris shall not accumulate on the water surface.
  - d. The Discharger shall consult and coordinate with the local Mosquito Abatement District to minimize the potential for mosquito breeding as needed to supplement the above measures.
9. The Discharger shall design, construct, operate, and maintain all ponds sufficiently to protect the integrity of containment dams and berms and prevent overtopping and/or structural failure. The operating freeboard in any pond shall never be less than two feet (measured vertically from the lowest possible point of overflow). As a means of management and to discern compliance with this requirement, the Discharger shall install and maintain in each pond a permanent staff gauge or other suitable measurement device with calibration marks that clearly show the water level at design capacity and enable determination of available operational freeboard.
10. Wastewater treatment, storage, and disposal ponds or structures shall have sufficient capacity to accommodate allowable wastewater flow, design seasonal precipitation, and ancillary inflow and infiltration during the winter

WASTE DISCHARGE REQUIREMENTS ORDER R5-2020-0032  
GERAWAN FARMING, INC.  
PLANT 3 KERMAN FRUIT PACKING FACILITY  
FRESNO COUNTY

while ensuring continuous compliance with all requirements of this Order. Design seasonal precipitation shall be based on total annual precipitation using a return period of 100 years, distributed monthly in accordance with historical rainfall patterns.

11. On or about 1 October of each year, available capacity shall at least equal the volume necessary to comply with Discharge Specifications D.9 and D.10.
12. The Discharger shall monitor sludge accumulation in the evaporation/percolation pond annually and shall periodically remove sludge as necessary to maintain adequate storage capacity. Specifically, if the estimated volume of sludge in the pond exceeds five percent of the permitted reservoir capacity, the Discharger shall complete sludge cleanout within 12 months after the date of the estimate.
13. Wastewater contained in any unlined pond shall not have a pH less than 6.0 or greater than 9.0.

#### **E. Groundwater Limitations**

1. Release of waste constituents from any treatment unit, storage unit, delivery system or disposal location associated with the Facility shall not cause or contribute to groundwater containing constituent concentrations in excess of the concentrations specified below or in excess of natural background quality, whichever is greater.
  - a. Nitrate as nitrogen of 10 mg/L.
  - b. Total trihalomethanes (sum of bromoform, bromodichloromethane, chloroform and dibromochloromethane) of 80 µg/L.
  - c. For constituents identified in Title 22 of the California Code of Regulations, the MCLs quantified therein.

#### **F. Land Application Area Specifications**

The following LAA specifications are applicable to the Discharger and the Facility's discharge of process wastewater if the Discharger begins to reuse the wastewater for irrigation of crops as detailed in Provision H.6.

1. Crops shall be grown in the LAA. Crops shall be selected based on nutrient uptake, consumptive use of water, and irrigation requirements to maximize uptake of nutrients.

WASTE DISCHARGE REQUIREMENTS ORDER R5-2020-0032  
GERAWAN FARMING, INC.  
PLANT 3 KERMAN FRUIT PACKING FACILITY  
FRESNO COUNTY

2. Application of waste constituents to the LAA shall be at reasonable agronomic rates to preclude creation of a nuisance or unreasonable degradation of groundwater, considering crop, soil, climate and irrigation management system. The annual nutritive loading of the LAA, including nutritive value of organic and chemical fertilizers, and the wastewater, shall not exceed the annual crop demand.
3. Hydraulic loading of wastewater an irrigation water shall be at reasonable agronomic rates designed to minimize the percolation of wastewater and irrigation water below the root zone (i.e., deep percolation).
4. The BOD loading to the LAA calculated as a cycle average and as instantaneous load, as determined by the methods described in the attached Monitoring and Reporting Program, shall not exceed 50 pounds per acre per day and 150 pounds per acre per day, respectively.
5. The resulting effect of the discharge on soil pH shall not exceed the buffering capacity of the soil profile.
6. Land application of wastewater shall be managed to minimize erosion.
7. The Discharger shall not discharge process wastewater to the LAA when soils are saturated (e.g., during or after significant precipitation).
8. Any irrigation runoff shall be confined to the LAA and shall not enter any surface water drainage course or storm water drainage system.
9. The LAA shall be managed to prevent breeding of mosquitos. More specifically:
  - a. All applied irrigation water must infiltrate completely within 48 hours;
  - b. Ditches not serving as wildlife habitat shall be maintained free of emergent marginal, and floating vegetation; and
  - c. Low-pressure and unpressurized pipeline and ditches accessible to mosquitos shall not be used to store process wastewater.

#### **G. Solids Disposal Specifications**

For the purpose of this Order, solid waste refers to solid inorganic matter removed by screens and soil sediments from washing of unprocessed fruit or vegetables. Except for waste solids originating from meat processing, residual solids means organic food processing byproducts such as culls, pulp, stems,



WASTE DISCHARGE REQUIREMENTS ORDER R5-2020-0032  
GERAWAN FARMING, INC.  
PLANT 3 KERMAN FRUIT PACKING FACILITY  
FRESNO COUNTY

leaves, and seeds that will not be subject to treatment prior to disposal or land application.

1. Residual solids shall be removed from screens, sumps, and ponds as needed to ensure optimal operation, prevent nuisance conditions, and maintain adequate storage capacity.
2. Any handling and storage of residual solids shall be controlled and contained in a manner that minimizes leachate formation and precludes infiltration of waste constituents into soils in a mass or concentration that will violate the groundwater limitations of this Order.
3. If removed from the site, residual solids shall be disposed of in a manner approved by the Executive Officer and consistent with Title 27, division 2. Removal for reuse as animal feed, or land disposal at facilities (i.e., landfills, composting facilities, soil amendment sites operated in accordance with valid waste discharge requirements issued by a Regional Water Board) will satisfy this specification.
4. Any proposed change in residual solids use or disposal practice shall be reported in writing to the Executive Officer at least 90 days in advance of the change.

#### H. Provisions

1. The Discharger shall comply with the *Standard Provisions and Reporting Requirements for Waste Discharge Requirements*, dated 1 March 1991 (SPRRs), which are a part of this Order. This attachment and its individual paragraphs are referred to as Standard Provisions.
2. The Discharger shall comply with the enclosed **Monitoring and Reporting Program (MRP) R5-2020-0032**, and any revisions thereto as ordered by the Executive Officer. The submittal dates of Discharger self-monitoring reports shall be no later than the submittal date specified in the MRP.
3. A copy of this Order (including Information Sheet, Attachments and SPRRs) and the MRP, shall be kept at the Facility for reference by operating personnel. Key operating personnel shall be familiar with their contents.
4. The Discharger shall comply with the Basin Plan amendments adopted in Resolution R5-2018-0034 incorporating new programs (Salt and Nitrate Control Program) for addressing ongoing salt and nitrate accumulation in the Central Valley developed as part of the Central Valley Salinity Alternatives for Long-Term Sustainability (CV-SALTS) initiative.



WASTE DISCHARGE REQUIREMENTS ORDER R5-2020-0032  
GERAWAN FARMING, INC.  
PLANT 3 KERMAN FRUIT PACKING FACILITY  
FRESNO COUNTY

5. By **4 December 2020**, the Discharger shall submit a **Salinity Reduction Study Work Plan** for Executive Officer approval. At a minimum, the Salinity Reduction Study Work Plan must include:
- i. Data on current and effluent salinity concentrations;
  - ii. Identification of known salinity sources;
  - iii. Description of current plans to reduce/eliminate known salinity sources;
  - iv. Preliminary identification of other potential sources;
  - v. A proposed schedule for evaluating sources; and
  - vi. A proposed schedule for identifying and evaluating potential reduction, elimination, and prevention methods.

Implementation progress of the Salinity Reduction Work Plan shall be reported each year in the Annual Monitoring Report required pursuant to the MRP.

6. By **4 December 2020**, the Discharger shall submit a **Groundwater Monitoring Well Network Evaluation and Well Installation Workplan** to ensure adequate monitoring upgradient and downgradient of the evaporation/percolation pond. The workplan shall evaluate the potential groundwater impacts attributable to the Facility's operations and discharge. The workplan shall be prepared in accordance with, and include the items listed in, the first section of Attachment C (*Requirements for Monitoring Well Installation Workplans and Monitoring Well Installation Reports*), which is incorporated herein.

As an alternative to the Groundwater Monitoring Well Network Evaluation and Well Installation Evaluation Work Plan discussed above, the Discharger may elect to either line the evaporation/percolation pond or pursue land application of the wastewater (i.e., reuse the wastewater for irrigation of surrounding crops at agronomic rates). If the Discharger selects one of these alternatives, the Discharger must submit an **Alternative Work Plan** by **4 December 2020** with a timeline for either installing a pond liner or reusing the Facility's effluent. The timeline shall not exceed two years from the date of the submittal of the Alternative Work Plan. If the Discharger chooses to pursue lining the pond, the Alternative Work Plan must include a water balance showing the pond will be sized appropriately to provide sufficient storage for the Facility at the permitted flows with a total annual precipitation using a return period of 100 years.

WASTE DISCHARGE REQUIREMENTS ORDER R5-2020-0032  
GERAWAN FARMING, INC.  
PLANT 3 KERMAN FRUIT PACKING FACILITY  
FRESNO COUNTY

7. Within **12 months of receiving Executive Officer approval** of the Groundwater Monitoring Network Evaluation and Well Installation Workplan, the Operator shall submit a **Groundwater Monitoring Well Installation Report** for the new groundwater monitoring wells constructed to comply with Provision H.6. The report shall be prepared in accordance with, and include the items listed in, the second section of Attachment C. The report shall describe the installation and development of all new monitoring wells and explain any deviation from the approved workplan.
8. A discharger whose waste flow has been increasing, or is projected to increase, shall estimate when flows will reach hydraulic and treatment capacities of its treatment, collection, and disposal facilities. The projections shall be made in January, based on the last three years' average dry weather flows, peak wet weather flows and total annual flows, as appropriate. When any projection shows that capacity of any part of the facilities may be exceeded in four years, the discharger shall notify the Central Valley Water Board by 31 January.
9. In accordance with California Business and Professions Code sections 6735, 7835, and 7835.1, engineering and geologic evaluations and judgments shall be performed by or under the direction of registered professionals competent and proficient in the fields pertinent to the required activities. All technical reports specified herein that contain workplans for investigations and studies, that describe the conduct of investigations and studies, or that contain technical conclusions and recommendations concerning engineering and geology shall be prepared by or under the direction of appropriately qualified professional(s), even if not explicitly stated. Each technical report submitted by the Discharger shall bear the professional's signature and stamp.
10. The Discharger shall submit the technical reports and work plans required by this Order for consideration by the Executive Officer, and incorporate comments the Executive Officer may have in a timely manner, as appropriate. Unless expressly stated otherwise in this Order, the Discharger shall proceed with all work required by the foregoing provisions by the due dates specified.
11. The Discharger shall comply with all conditions of this Order, including timely submittal of technical and monitoring reports. On or before each report due date, the Discharger shall submit the specified document to the Central Valley Water Board or, if appropriate, a written report detailing compliance or noncompliance with the specific schedule date and task. If noncompliance is being reported, then the Discharger shall state the reasons for such noncompliance and provide an estimate of the date when

the Discharger will be in compliance. The Discharger shall notify the Central Valley Water Board in writing when it returns to compliance with the time schedule. Violations may result in enforcement action, including Central Valley Water Board or court orders requiring corrective action or imposing civil monetary liability, or in revision or rescission of this Order.

12. The Discharger shall at all times properly operate and maintain all facilities and systems of treatment and control (and related appurtenances) that are installed or used by the Discharger to achieve compliance with the conditions of this Order. Proper operation and maintenance also includes adequate laboratory controls and appropriate quality assurance procedures. This provision requires the operation of back-up or auxiliary.
13. The Discharger shall use the best practicable cost-effective control technique(s) including proper operation and maintenance, to comply with this Order.
14. Per the SPRRs, the Discharger shall report promptly to the Central Valley Water Board any material change or proposed change in the character, location, or volume of the discharge.
15. In the event that the Discharger reports toxic chemical release data to the State Emergency Response Commission (SERC) pursuant to section 313 of the Emergency Planning and Community Right to Know Act (42 U.S.C. § 11023), the Discharger shall also report the same information to the Central Valley Water Board within 15 days of the report to the SERC.
16. In the event of any change in control or ownership of the WWTF, the Discharger must notify the succeeding owner or operator of the existence of this Order by letter, a copy of which shall be immediately forwarded to the Central Valley Water Board.
17. To assume operation as Discharger under this Order, the succeeding owner or operator must apply in writing to the Executive Officer requesting transfer of the Order. The request must contain the requesting entity's full legal name, the state of incorporation if a corporation, the name and address and telephone number of the persons responsible for contact with the Central Valley Water Board, and a statement. The statement shall comply with the signatory paragraph of Standard Provision B.3 and state that the new owner or operator assumes full responsibility for compliance with this Order. Failure to submit the request shall be considered a discharge without requirements, a violation of the Water Code. If approved by the Executive Officer, the transfer request will be submitted to the Central Valley Water Board for its consideration of transferring the ownership of this Order at one of its regularly scheduled meetings.

WASTE DISCHARGE REQUIREMENTS ORDER R5-2020-0032  
GERAWAN FARMING, INC.  
PLANT 3 KERMAN FRUIT PACKING FACILITY  
FRESNO COUNTY

18. The Central Valley Water Board will review this Order periodically and will revise requirements when necessary.

If, in the opinion of the Executive Officer, the Discharger fails to comply with the provisions of this Order, the Executive Officer may refer this matter to the Attorney General for judicial enforcement, may issue a complaint for administrative civil liability, or may take other enforcement actions. Failure to comply with this Order may result in the assessment of Administrative Civil Liability of up to \$10,000 per violation, per day, depending on the violation, pursuant to the Water Code, including sections 13268, 13350 and 13385. The Central Valley Water Board reserves its right to take any enforcement actions authorized by law.

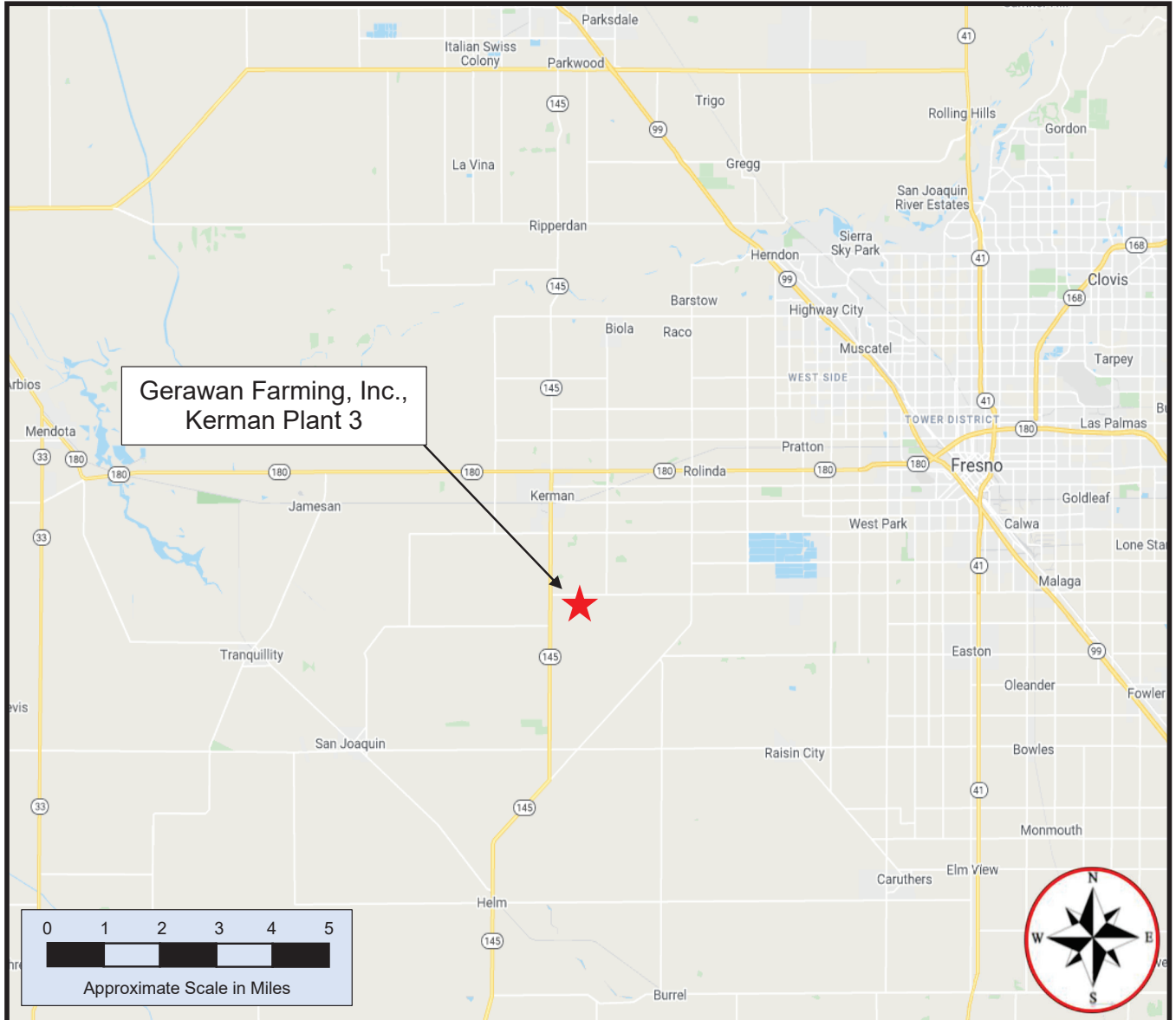
Any person aggrieved by this Central Valley Water Board action may petition the State Water Board for review in accordance with Water Code section 13320 and California Code of Regulations, title 23, section 2050 et seq. The State Water Board must receive the petition by 5:00 p.m. on the 30th day after the date of this Order; if the 30th day falls on a Saturday, Sunday, or state holiday, the petition must be received by the State Water Board by 5:00 p.m. on the next business day. [Copies of the law and regulations applicable to filing petitions](#) are available on the Internet (at the address below) and will be provided upon request.

[http://www.waterboards.ca.gov/public\\_notices/petitions/water\\_quality](http://www.waterboards.ca.gov/public_notices/petitions/water_quality)

### ATTACHMENTS

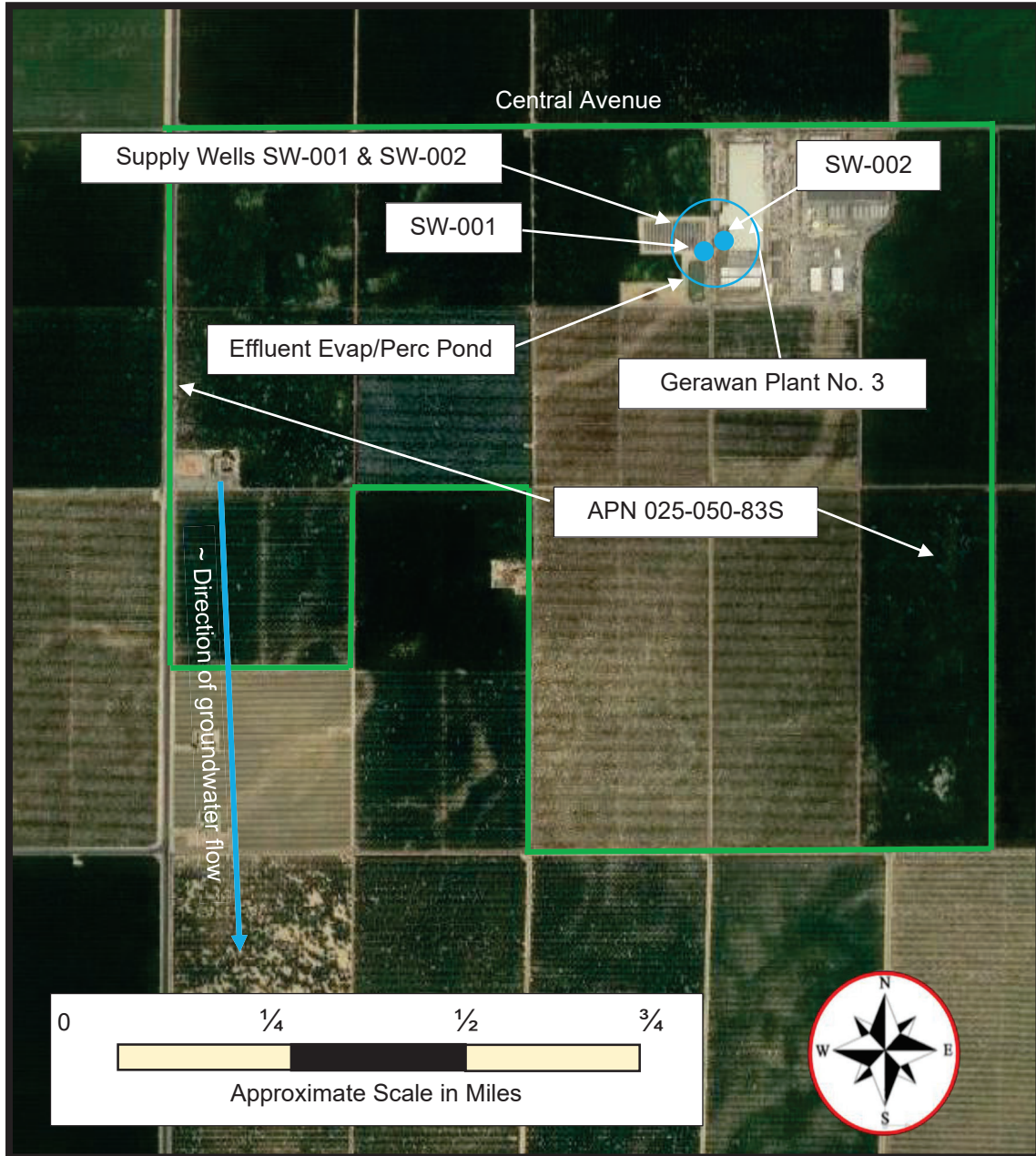
- Attachment A – Site Map
- Attachment B – Facility Map
- Attachment C – Requirements for Monitoring Well Installation Workplans and Monitoring Well Installation Reports
- Information Sheet
- Standard Provisions and Reporting Requirements (SPRRs), dated 1 March 1991
- Monitoring and Reporting Program R5-2020-0032

**ATTACHMENT A—SITE MAP**





**ATTACHMENT B—FACILITY MAP**



## **ATTACHMENT C**

### **Requirements for Monitoring Well Installation Work Plans and Installation Reports**

Prior to installation of groundwater monitoring wells, the Discharger shall submit a workplan containing, at a minimum, the information listed in Section 1, below. Wells may be installed after staff approves the workplan. Upon installation of the monitoring wells, the Discharger shall submit a well installation report which includes the information contained in Section 2 below. All workplans and reports must be prepared under the direction of, and signed by, a registered geologist or civil engineer licensed by the State of California.

#### **SECTION 1 -Monitoring Well Installation Workplan and Groundwater Sampling and Analysis Plan**

The monitoring well installation workplan shall contain the following minimum information:

##### **A. General Information:**

- Purpose of the well installation project
- Brief description of local geologic and hydrogeologic conditions
- Proposed monitoring well locations and rationale for well locations
- Topographic map showing facility location, roads, and surface water bodies
- Large scaled site map showing all existing on-site wells, proposed wells, surface drainage courses, surface water bodies, buildings, waste handling facilities, utilities, and major physical and man-made features

##### **B. Drilling Details:**

- Description of the on-site supervision of drilling and well installation activities
- Description of drilling equipment and techniques
- Equipment decontamination procedures
- Soil sampling intervals (if appropriate) and logging methods

##### **C. Monitoring Well Design (in narrative and/or graphic form):**

- Diagram of proposed well construction details:
  - o Borehole diameter
  - o Casing and screen material, diameter, and centralizer spacing (if needed)
  - o Type of well caps (bottom cap either screw on or secured with stainless steel screws)
  - o Anticipated depth of well, length of well casing, and length and position of perforated interval
  - o Thickness, position and composition of surface seal, sanitary seal, and sand pack

WASTE DISCHARGE REQUIREMENTS ORDER R5-2020-0032  
GERAWAN FARMING, INC.  
PLANT 3 KERMAN FRUIT PACKING FACILITY  
FRESNO COUNTY  
**ATTACHMENT C**

- Anticipated screen slot size and filter pack

**D. Well Development (not to be performed until at least 48 hours after sanitary seal placement):**

- Method of development to be used (i.e., surge, bail, pump, etc.)
- Parameters to be monitored during development and record keeping technique
- Method of determining when development is complete
- Disposal of development water

**E. Well Survey (precision of vertical survey data shall be at least 0.01 foot):**

- Identify the Licensed Land Surveyor or Civil Engineer that will perform the survey
- Datum for survey measurements
- List well features to be surveyed (i.e. top of casing, horizontal and vertical coordinates, etc.)

**F. Schedule for Completion of Work**

**G. Appendix: Groundwater Sampling and Analysis Plan (SAP)**

The Groundwater SAP shall be included as an appendix to the workplan, and shall be utilized as a guidance document that is referred to by individuals responsible for conducting groundwater monitoring and sampling activities.

Provide a detailed written description of standard operating procedures for the following:

- Equipment to be used during sampling
- Equipment decontamination procedures
- Water level measurement procedures
- Well purging (include a discussion of procedures to follow if three casing volumes cannot be purged)
- Monitoring and record keeping during water level measurement and well purging (include copies of record keeping logs to be used)
- Purge water disposal
- Analytical methods and required reporting limits
- Sample containers and preservatives
- Sampling
  - General sampling techniques
  - Record keeping during sampling (include copies of record keeping logs to be used)
  - QA/QC samples
- Chain of Custody
- Sample handling and transport



WASTE DISCHARGE REQUIREMENTS ORDER R5-2020-0032  
GERAWAN FARMING, INC.  
PLANT 3 KERMAN FRUIT PACKING FACILITY  
FRESNO COUNTY  
**ATTACHMENT C**

## **SECTION 2 - Monitoring Well Installation Report**

The monitoring well installation report must provide the information listed below. In addition, the report must also clearly identify, describe, and justify any deviations from the approved workplan.

### **A. General Information:**

- Purpose of the well installation project
- Brief description of local geologic and hydrogeologic conditions encountered during installation of the wells
- Number of monitoring wells installed and copies of County Well Construction Permits
- Topographic map showing facility location, roads, surface water bodies
- Scaled site map showing all previously existing wells, newly installed wells, surface water bodies, buildings, waste handling facilities, utilities, and other major physical and man-made features.

### **B. Drilling Details (in narrative and/or graphic form):**

- On-site supervision of drilling and well installation activities
- Drilling contractor and driller's name
- Description of drilling equipment and techniques
- Equipment decontamination procedures
- Soil sampling intervals and logging methods
- Well boring log (including the following):
  - o Well boring number and date drilled
  - o Borehole diameter and total depth
  - o Total depth of open hole (same as total depth drilled if no caving or back-grouting occurs)
  - o Depth to first encountered groundwater and stabilized groundwater depth
  - o Detailed description of soils encountered, using the Unified Soil Classification System

### **C. Well Construction Details (in narrative and/or graphic form).**

- Well construction diagram, including:
  - o Monitoring well number and date constructed
  - o Casing and screen material, diameter, and centralizer spacing (if needed)
  - o Length of well casing, and length and position of perforated interval
  - o Thickness, position and composition of surface seal, sanitary seal, and sand pack
  - o Type of well caps (bottom cap either screw on or secured with stainless steel screws)

### **D. Well Development:**

- Date(s) and method of development
- How well development completion was determined
- Volume of water purged from well and method of development water disposal
- Field notes from well development should be included in report

WASTE DISCHARGE REQUIREMENTS ORDER R5-2020-0032  
GERAWAN FARMING, INC.  
PLANT 3 KERMAN FRUIT PACKING FACILITY  
FRESNO COUNTY  
**ATTACHMENT C**

**E. Well Survey (survey the top rim of the well casing with the cap removed):**

- Identify the coordinate system and datum for survey measurements
- Describe the measuring points (i.e. ground surface, top of casing, etc.)
- Present the well survey report data in a table

Include the Registered Engineer or Licensed Surveyor's report and field notes in appendix.

CALIFORNIA REGIONAL WATER QUALITY CONTROL BOARD  
CENTRAL VALLEY REGION

WASTE DISCHARGE REQUIREMENTS ORDER R5-2020-0032  
FOR  
GERAWAN FARMING, INC.  
PLANT 3 KERMAN FRUIT PACKING FACILITY  
FRESNO COUNTY

**INFORMATION SHEET**

**BACKGROUND**

Gerawan Farming, Inc. (Gerawan or Discharger) owns and operates a fruit packing facility (Facility) designated Plant 3 in Kerman, Fresno County. Plant 3 is at 14044 West Central Avenue, Kerman on a portion of APN 025-050-83S (Attachment A). Fruit processing activities have been occurring at the Facility for decades (the Plant 3 building was built in 1954). The Facility has not previously been regulated by Waste Discharge Requirements (WDRs).

The following technical reports and documents were submitted to the Central Valley Water Board to draft WDRs for the Facility.

- Technical Report for Report of Waste Discharge (RWD) for Gerawan Farming, Inc., Plant 3 Tree Fruit Packing Facility, Fresno County, 21 June 2019 prepared by EMKO Environmental Inc.
- A Form 200 completed and signed by George Nikolich, Vice President, Technical Operations, Gerawan Farming, Inc.
- Revised Technical Report for Report of Waste Discharge (RWD) for Gerawan Farming, Inc., Plant 3 Tree Fruit Packing Facility, Fresno County, 23 July 2019 prepared by EMKO Environmental Inc.
- Revised Technical Report for Report of Waste Discharge (RWD) for Gerawan Farming, Inc., Plant 3 Tree Fruit Packing Facility, Fresno County, 12 August 2019 prepared by EMKO Environmental Inc.
- A 30 September 2019 letter from Gerawan Farming, Inc evaluating the reuse of fruit processing wastewater on adjacent lands.

**WASTEWATER GENERATION AND DISPOSAL**

The Facility packs whole peaches, plums, and nectarines and wastewater is diverted to a 6-million-gallon capacity, unlined evaporation/percolation pond constructed below grade with a 24-inch above grade earthen berm around the edges of the pond. The packing process includes washing, sorting, and grading the fruit and packing occurs

WASTE DISCHARGE REQUIREMENTS ORDER R5-2020-0032  
GERAWAN FARMING, INC.  
PLANT 3 KERMAN FRUIT PACKING FACILITY  
FRESNO COUNTY

from about early May through late September or approximately 130 days. The amount of water used varies from about 14,000 to 130,000 gallons per day (gpd) with an estimated average of 90,000 gpd. A water balance in the RWD indicated the evaporation/percolation pond could accept up to 12.35 million gallons of wastewater annually. The water balance in the RWD indicated the pond could accept up to 12.35 million gallons annually. The RWD conservatively assumes that 100 percent of the water used becomes wastewater.

Central Valley Regional Water Quality Control Board staff prepared Monitoring and Reporting Program R5-2019-0905 for the Facility in September 2019. The fourth quarter 2019 Annual Report was submitted but states that no discharge occurred during the fourth quarter of 2019, so no data was available for review.

Effluent samples were collected from the discharge and from the source water for the Facility in May and June 2019 and are discussed in Findings 12 through 15 of WDRs R5-2020-0032.

### **SOLIDS GENERATION AND DISPOSAL**

Culled fruit is hauled offsite for further processing in secondary markets or used as animal feed.

### **GROUNDWATER CONSIDERATIONS**

Groundwater conditions are discussed in Findings 22 and 23.

### **ANTIDegradation**

Antidegradation analysis and conclusions are discussed in Findings 41 through 46 of the Order.

### **DISCHARGE PROHIBITIONS, DISCHARGE SPECIFICATIONS, AND PROVISIONS**

The Order limits the maximum daily average discharge to 130,000 gallons per day and the maximum annual discharge to 12.35 million gallons. This Order contains Effluent Limit B.1 that requires the 12-month rolling average EC of the discharge (monitored at EFF-001) to not exceed the 12-month flow-weighted average EC of the source water plus 400  $\mu$ mhos/cm. The Order also includes Provision H.5 requiring submittal of a Salinity Reduction Study Work Plan.

### **MONITORING REQUIREMENTS**

Section 13267 of the California Water Code authorizes the Central Valley Water Board to require monitoring and technical reports as necessary to investigate the impact of waste discharges on waters of the State. Water Code Section 13268 authorizes assessment of civil administrative liability where appropriate. The Order includes effluent, pond, solids, and water supply monitoring requirements. This monitoring is

WASTE DISCHARGE REQUIREMENTS ORDER R5-2020-0032  
GERAWAN FARMING, INC.  
PLANT 3 KERMAN FRUIT PACKING FACILITY  
FRESNO COUNTY

necessary to characterize the discharge and evaluate compliance with the requirements and specifications in the Order.

## **SALT AND NITRATE CONTROL PROGRAMS REGULATORY CONSIDERATIONS**

As part of the Central Valley Salinity Alternatives for Long-Term Sustainability (CV-SALTS) initiative, the Central Valley Water Board adopted Basin Plan amendments (Resolution R5-2018-0034) incorporating new programs for addressing ongoing salt and nitrate accumulation in the Central Valley at its 31 May 2018 Board Meeting. On 16 October 2019, the State Water Resources Control Board adopted Resolution No. 2019-0057 approving the Central Valley Water Board Basin Plan amendments and also directed the Central Valley Water Board to make targeted revisions to the Basin Plan amendments within one year from the approval of the Basin Plan amendments by the Office of Administrative Law. The Office of Administrative Law approved the Basin Plan amendments on 15 January 2020 (OAL Matter No. 2019-1203-03).

Pursuant to the Basin Plan amendments, dischargers will receive a Notice to Comply with instructions and obligations for the Salt Control Program within one year of the effective date of the amendments (17 January 2020). Upon receipt of the Notice to Comply, the Discharger will have no more than six months to inform the Central Valley Water Board of their choice between Option 1 (Conservative Option for Salt Permitting) or Option 2 (Alternative Option for Salt Permitting). The level of participation required of dischargers whose discharges do not meet stringent salinity requirements will vary based on factors such as the amount of salinity in the discharge, local conditions, and type of discharge. For the Nitrate Control Program, the Facility falls within Groundwater Basin 5-22.08 (San Joaquin Valley – Kings), a Priority1 Basin. Dischargers within a Priority 1 Basin will receive a Notice to Comply for the Nitrate Control Program within one year of the Basin Plan Amendments becoming effective (17 January 2020). The CV-SALTS initiative will result in regulatory changes that will be implemented through conditional prohibitions and modifications to many WDRs regionwide, including the WDRs that regulate discharges from the Facility. More [information regarding the CV-SALTS regulatory planning process](#) can be found at the following link: [https://www.waterboards.ca.gov/centralvalley/water\\_issues/salinity/](https://www.waterboards.ca.gov/centralvalley/water_issues/salinity/) .

## **REOPENER**

The conditions of discharge in the Order were developed based on currently available technical information and applicable water quality laws, regulations, policies, and plans, and are intended to assure conformance with them. The Order sets limitations based on the information provided thus far. If applicable laws and regulations change, or once new information is obtained that will change the overall discharge and its potential to impact groundwater, it may be appropriate to reopen the Order.