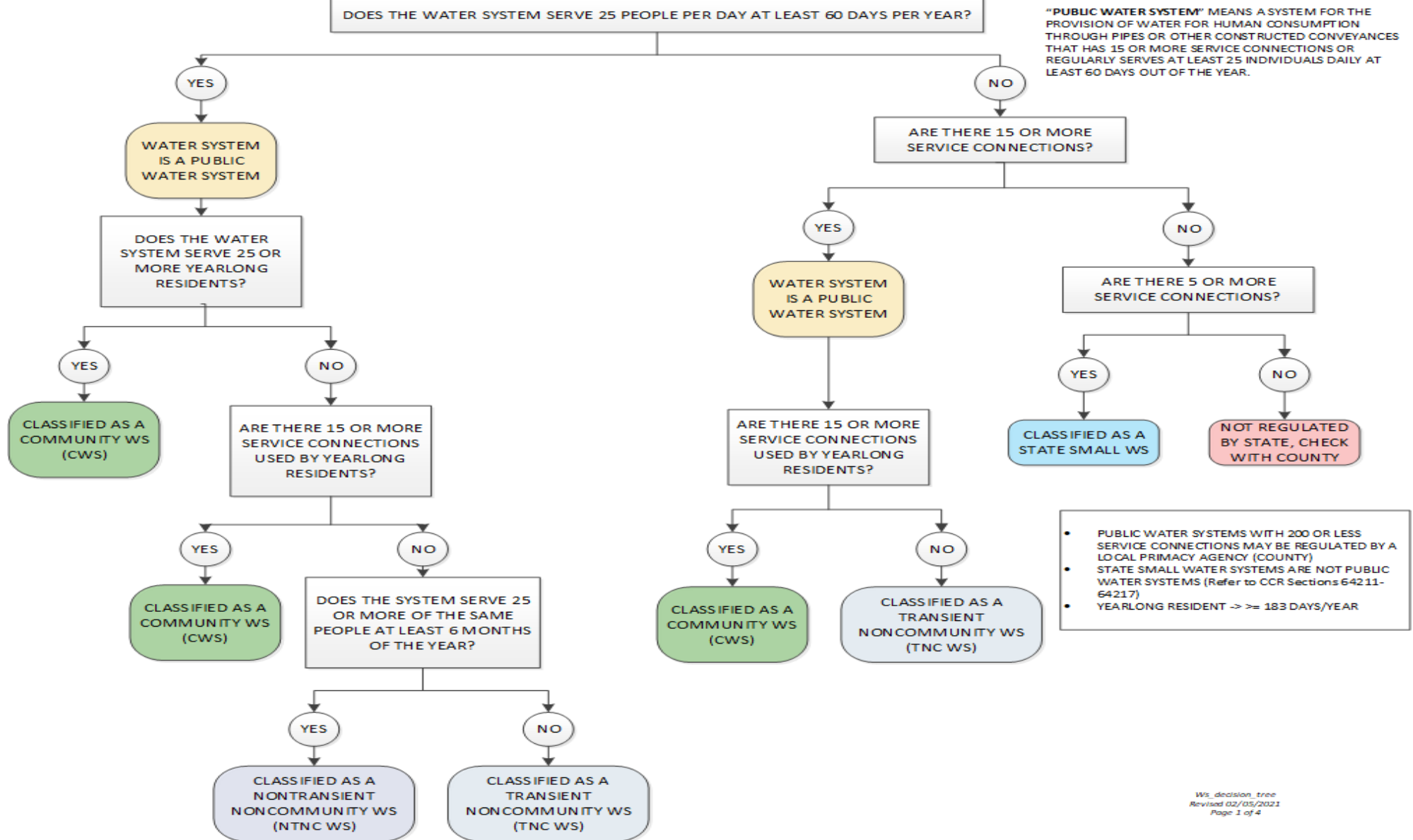


DECISION TREE FOR CLASSIFICATION OF WATER SYSTEMS



DECISION TREE FOR CLASSIFICATION OF WATER SYSTEMS

“PUBLIC WATER SYSTEM” means a system for the provision of water for human consumption through pipes or other constructed conveyances that has 15 or more service connections or regularly serves at least 25 individuals daily at least 60 days out of the year.

Does the water system serve 25 people per day at least 60 day per year? There are two possible answers, “yes” and “no.”

If “yes,” then the water system does serve at least 25 individuals at least 60 days per year and is a public water system.

Does the water system serve 25 or more yearlong residents? There are two possible answers, “yes” and “no.”

If “yes,” then the water system is classified as a community water system (CWS).

The classification of the water system is complete.

If “no,” the water system does not serve 25 or more yearlong residents and we need to know the number of service connections.

Are there 15 or more service connections used by yearlong residents? A yearlong resident is a person who resides at a service connection for 183 days, or more, per year. There are two possible answers, “yes” and “no.”

If “yes,” then the water system is classified as a community water system (CWS).

The classification of the water system is complete.

If “no,” then the water system does not have 15 or more service connections and we need to know how many people are served part of the year.

Does the water system serve 25 or more of the same people at least 6 months of the year? There are two possible answers, “yes” and “no.”

If “yes,” then the water system is classified as a nontransient noncommunity water system (NTNCWS)

The classification of the water system is complete.

If “no,” then the water system is classified as a transient noncommunity water system (TNCWS)

The classification of the water system is complete.

If “no,” then the water system does not serve at least 25 individuals at least 60 days per year and we need to know more information about service connections.

Are there 15 or more service connections? There are two possible answers, “yes” and “no.”

If “yes,” we need to decide if the water system is a public water system.

Are there 15 or more service connections used by yearlong residents? A yearlong resident is someone there 183 days, or more, per year. There are two possible answers, “yes” and “no.”

If “yes,” the water system is classified as a community water system (CWS)

The classification of the water system is complete.

If “no,” the water system does not have 15 or more service connections used by yearlong residents, the water system is classified as a transient noncommunity water system (TNCWS).

The classification of the water system is complete.

If “no,” we need to know about the number of service connections.

Are there 5 or more service connections? There are two possible answers, “yes” and “no.”

If “yes,” the water system is classified as a state small water system. State small water systems are not public water systems (refer to the CCR Sections 64211 – 64217).

The classification of the water system is complete.

If “no,” the water system does not have 5 or more service connections, the water system is not regulated by the State, check with the County.

The classification of the water system is complete.

California Health and Safety Code §116275

- (e) “Human consumption” means the use of water for drinking, bathing or showering, hand washing, oral hygiene, or cooking, including, but not limited to, preparing food and washing dishes.
- (h) “Public water system” means a system for the provision of water for human consumption through pipes or other constructed conveyances that has 15 or more service connections or regularly serves at least 25 individuals daily at least 60 days out of the year. A public water system includes the following:
 - (1) Any collection, treatment, storage, and distribution facilities under control of the operator of the system that are used primarily in connection with the system.
 - (2) Any collection or pretreatment storage facilities not under the control of the operator that are used primarily in connection with the system.
 - (3) Any water system that treats water on behalf of one or more public water systems for the purpose of rendering it safe for human consumption.
- (i) “Community water system” means a public water system that serves at least 15 service connections used by yearlong residents or regularly serves at least 25 yearlong residents of the area served by the system.
- (j) “Noncommunity water system” means a public water system that is not a community water system.
- (k) “Nontransient noncommunity water system” means a public water system that is not a community water system and that regularly serves at least 25 of the same persons over six months per year.
- (n) “State small water system” means a system for the provision of piped water to the public for human consumption that serves at least five, but not more than 14, service connections and does not regularly serve drinking water to more than an average of 25 individuals daily for more than 60 days out of the year.
- (o) “Transient noncommunity water system” means a noncommunity water system that does not regularly serve at least 25 of the same persons over six months per year.
- (s) “Service connection” means the point of connection between the customer’s piping or constructed conveyance, and the water system’s meter, service pipe, or constructed conveyance.

http://leginfo.legislature.ca.gov/faces/codes_displaySection.xhtml?lawCode=HSC§ionNum=116275