

**CALIFORNIA REGIONAL WATER QUALITY CONTROL BOARD
LAHONTAN REGION**

**MEETING OF JUNE 10-11, 2015
BISHOP**

ITEM: 13

SUBJECT: EXECUTIVE OFFICER'S REPORT

DISCUSSION: The Executive Officer's report includes the following:

ENCLOSURE:	ITEM:	BATES NUMBER:
1	Discussion of Standing Items	13-5
2	Executive Officer's Written Report	13-9
3	Notification of Closure of Underground Storage Tanks	13-19
4	Notification of Spills	13-23
5	Quarterly Violations Report	13-27

ENCLOSURE 1

This page is intentionally left blank.

**CALIFORNIA REGIONAL WATER QUALITY
CONTROL BOARD
LAHONTAN REGION**

JUNE 2015 STANDING ITEMS

The Water Board has requested that it be kept informed of the status of a number of issues. The following table lists the items, the reporting frequency and the dates the items are due.

ENTIRE BASIN		
ISSUE	FREQUENCY	DUE DATE
Lake Tahoe Nearshore Standards	Semi-Annual	July 2015 January 2016
Status of Basin Plan Amendments	Semi-Annual	July 2015 January 2016
Status of Grants	Annually	March 2016
Caltrans Statewide General Permit/Tahoe Basin	Annually	July 2015
Tahoe Municipal Permit	Annually	July 2015
County Sanitation Districts of Los Angeles - District No. 14	Annually	January 2016
County Sanitation Districts of Los Angeles - District No. 20	Annually	January 2016
Status of Dairies	Semi-Annual	August 2015 January 2016
City of Barstow	Annually	September 2015
Pacific Gas & Electric Company	Each Southern Board Meeting	September 2015
Leviathan Mine	Semi-Annual	July 2015 January 2016
Salt & Nutrient Management Plans	Semi-Annual	November 2015 May 2016
Onsite Septic Tanks	Annually	June 2015 (EO Report Item 6)
Bridgeport Grazing Waiver	Annually	June 2015 (EO Report Item 2)
Bacteria Water Quality Objectives Project	Semi-Annual	November 2015 May 2016

This page is intentionally left blank.

ENCLOSURE 2

This page is intentionally left blank.



Lahontan Regional Water Quality Control Board



EXECUTIVE OFFICER'S REPORT

June 2015

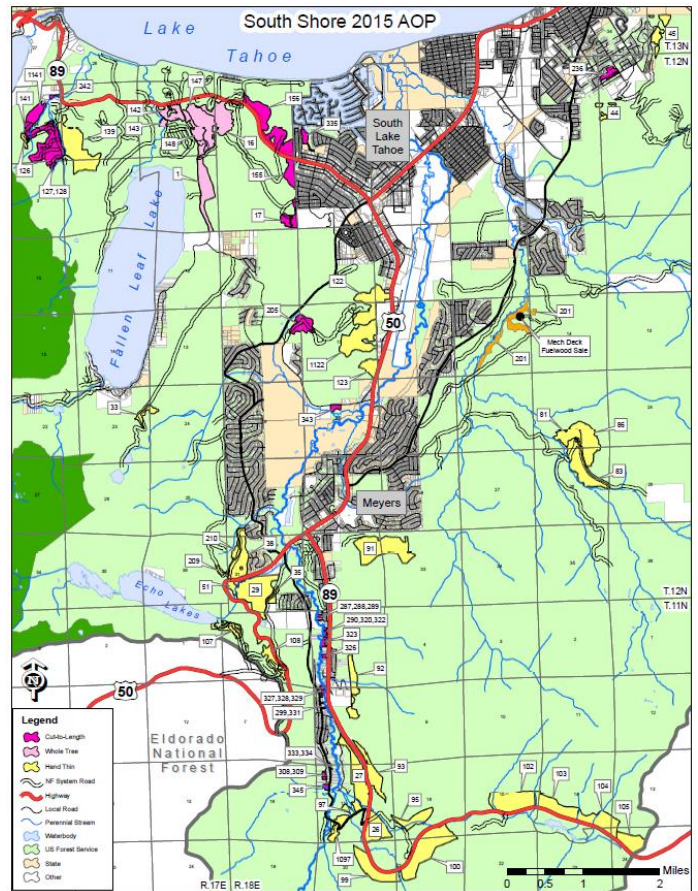
NORTH

1. 2015 South Shore Fuel Reduction and Healthy Forest Restoration Project Annual Operations Plan, El Dorado County – Taylor Currier

The South Shore Fuel Reduction and Healthy Forest Restoration Waste Discharge Requirements (WDR) were approved by the Water Board Executive Officer on April 12, 2012. The goal of the project is to reduce impacts from hazard fuels and restore ecosystem health within the South Shore of the Lake Tahoe Basin wildland urban interface. The US Forest Service – Lake Tahoe Basin Management Unit (LTBMU) has operated under this WDR for 3 years and anticipates a total of 7 – 10 years for project completion. During the first three years of operation, LTBMU has treated approximately 2,999 acres of the 10,000 acre project. Of the treated acres, 1,097 acres have been mechanically treated, and 1,902 acres have been thinned by hand crew operations.

Water Board staff has reviewed and accepted the LTBMU's South Shore Fuel Reduction and Healthy Forest Restoration 2015 Annual Operating Plan. The LTBMU plans to treat approximately 2,427 acres during the 2015 field season. Crews will treat 1,642 by hand thinning, 365 acres with low impact Cut-to-Length harvesting in sensitive areas, and 276 acres with Whole Tree Logging near Fallen Leaf Lake.

In addition, 144 acres of existing biomass piles in stream environment zones (SEZs) will be treated through prescribed burning, if conditions allow for safe burning in 2015.



2. 2015 Bridgeport Grazing Waiver Status, Mono County – Bruce Warden

On July 11, 2012, the Water Board renewed the Bridgeport Grazing Waiver for five years. Enrollees under the waiver have two remaining grazing seasons—2015 and 2016--to attain the 200 fecal coliform/100 ml interim water quality objectives specified in the waiver or fully implement all feasible management practices.

The Waiver requires submission of a Grazing Management Practice Implementation Annual Report by March 15 of each year. The annual report should provide information on implemented and planned grazing management practices from the prior season and those intended to be implemented during subsequent seasons through 2017. Seven enrolled ranches have submitted the report—three were late and one was incomplete—and three ranches have not submitted their annual report. One ranching operation is currently in non-compliance with the grazing waiver requirement for submission of a Ranch Water Quality Management Plan.

Water Board staff is working with two enrollees who have not yet submitted the required annual report and we expect the reports soon. From the reports submitted, it appears that progress has been made on some ranches in 2014 with the following BMPs implemented:

- 4,000 feet exclusion fence
- 2,500 feet cross fence,
- 1,320 feet of riparian filter strip,
- three new water weirs,
- one new watercourse crossing,
- pipe for off-stream watering

- noxious plant removal and replacement with grass filter.

Planned 2015 grazing management implementation projects include additional filter strips near riparian areas, armoring of stream crossings, weirs, and tail water recovery ponds.

Two ranches are sheep operations that are in full compliance with management practice implementation, so no further action is required.

The Bridgeport Ranchers Organization (BRO) has a pre-season meeting, on or before March 15 each year, which has been attended by Water Board staff since 2007 to discuss monitoring data, strategies for water quality improvements, and to receive annual reports. Water Board staff were not invited to attend the annual pre-season meeting this year.

SOUTH

3. Bishop Creek Bacteria Data Sharing Session – Mary Fiore-Wagner

On April 27, Water Board staff and Bishop Creek stakeholders met to share bacteria monitoring data and to discuss appropriate responses. Participants included the Bishop Paiute Indian Tribe (Tribe), the Los Angeles Department of Water and Power (LADWP), and the Inyo County Environmental Health Department (Inyo Environmental Health).

Water Board Data. Water Board staff presented findings of an assessment of bacterial water quality monitoring in impaired rivers and streams throughout the Sierra Nevada Region, which was recently completed under contract with the University of California Santa Barbara – Sierra Nevada Aquatic Research Laboratory (SNARL). Though the study area encompassed 35 streams in Mono and northern Inyo County, Water Board staff focused its data sharing on the results for water samples collected in and around the City of Bishop.

Over 700 samples collected throughout the study area indicated that *Escherichia coli* (E. coli) concentrations were generally low, typically less than 20 colony forming units (CFU) per 100 milliliters (mL). A few areas were characterized by high E.coli concentrations that exceeded the US EPA's recommended criteria of 100 or 126 CFU/mL for recreational waters. Areas that exhibited high bacterial levels included Bridgeport Valley, Owens River above Crowley Reservoir, Round Valley, and in and around the City of Bishop.

SNARL used modern measurements of fecal indicator bacteria that rely on quantitative polymerase chain reaction (qPCR) methods to identify the primary

sources of fecal indicator bacteria in 165 samples collected from streams in the study area. SNARL applied Microbial Source Tracking (MST) assays to analyze the DNA extracted from bacterial cells collected from filtered water samples. Bacterial cells were compared to assays that targeted general bacterial groups found in vertebrate species and specific subgroups associated with ruminants (including cattle) and humans. MST results showed that fecal bacteria attributable to ruminants were widespread throughout the study area. Additionally, ruminants were a more significant source of the measured fecal bacteria.

Statistical analysis and modeling determined that the presence or absence of livestock had the strongest effect on E.coli concentrations. Other primary landscape-scale drivers (land use, elevation, precipitation amount, presence/absence of an upstream waterbody, season) also affected concentrations, but none as strongly as the presence or absence of livestock upstream of the sampling location.

Bishop Paiute Tribe Data. The Tribe continues to maintain a robust bacteria monitoring program along segments of Bishop Creek within its Reservation. During the irrigation season (April 1 – October 31) the Tribe collects weekly surface water samples from six main sites. Outside of the irrigation season, the Tribe collects monthly samples. When concentrations of bacteria exceed the Tribe's own standards for E.coli (which are based on USEPA criteria), the Tribe posts signs at popular swimming locations within the Reservation which advise people to avoid contact with the water. Already this season, the Tribe has posted advisories at some of its sampling sites based on high fecal counts measured in samples collected in April 2015.

The Tribe is willing to collaborate and assist in local efforts to try to isolate the seasonal elevated levels of bacteria in Bishop Creek. To reduce fecal inputs associated with grazing, the Tribe implements a Non-Point Source (NPS) pollution program. Examples of the Tribe's NPS management practices include fencing projects to exclude or limit livestock access to the creek, along with tailwater management through creation of berms, ditches, and recharge ponds. The Tribe's program also works to manage healthy riparian areas adjacent to surface waters and has recently developed their own Native Plant Nursery specific to the restoration and protection activities of the Water Quality Control Program. Additionally, the Tribe participates and hosts various education and outreach efforts (Firstbloom, Community Gardens Workshops, Adopt-A Creek) that focus on pollution prevention practices that encourage general stewardship to help control bacterial and other pollutant inputs to surface waters.

LADWP Data. LADWP collected 823 samples from 21 locations along both the North and South Forks of Bishop Creek for a 40-week period beginning June 4, 2014. No sampling occurred during some weeks due to unavoidable problems (access, safety of field crew). During sampling, field crews reported the presence of both domesticated and wild animals including deer, chickens, horses, dogs, ducks, and cattle within the vicinity of Bishop Creek. At some sampling locations, manure was observed along the banks of the creek, and at times individuals were seen fishing in the waters of Bishop Creek.

LADWP reported that the highest bacteria counts were measured at stations that border the Bishop Paiute Reservation, a housing tract, or a heavily used park. Observations made at sampling locations with the highest FIB counts included the presence of ducks, cattle, and/or manure along the streambank.

LADWP is in the process of expanding its sampling program to include MST to help identify the source of fecal contamination.

Water Board staff recommended that LADWP add sampling locations east of Highway 395 and incorporate some sample site duplication with Water Board sites to verify field and laboratory quality assurance and control.

At the April meeting and in subsequent email correspondence, Water Board staff encouraged LADWP to pick one or two spots along Bishop Creek and implement some exclusion fencing or other management measure (livestock management, alternate watering sources, modifying irrigation practices) to keep the cattle and their fecal matter out of the creek. Water Board staff suggested that the pilot scale project include pre- and post-monitoring to evaluate the effectiveness of the controls measures. Pilot project locations suggested by Water Board staff include sites (1) where the water quality has been most significantly impacted by the presence of cattle, (2) within LADWP's jurisdiction and, (3) where the geometric mean for E.coli concentrations during May-Sept exceeded USEPA's bacterial water quality criterion for recreational waters of 100 or 126 E.coli CFU/100mL.

LADWP verbally committed to considering and implementing a management measure pilot project at a yet to be determined Bishop Creek location.

Inyo County Environmental Health Department. Inyo Environmental Health has no funding for stream monitoring, but based on bacteria data that the Water Board shared in 2014, it has posted advisory signs at the canal and East Line Street since these areas are frequented by locals who often engage in body contact activity. Inyo Environmental Health is interested in (1) gathering more MST data to hone in on the sources of fecal contamination in Bishop Creek, and (2) deliberating a coordinated community

response to the bacterial pollution of Bishop Creek.

Water Board staff will work with the Tribe and LADWP to maximize the various sampling efforts being conducted in the Bishop Creek area. Additionally Water Board staff will continue to encourage landowners to explore options to implement management measures at locations that have been identified as 'hot spots' based on the findings from the bacteria monitoring occurring in and around the City of Bishop.

4. Public Meeting for Revised Proposed Plan, Landfill Site LF044, Former George Air Force Base – Todd Battey

Water Board staff attended a public meeting held by the Air Force on April 29, 2015. The purpose of the meeting was to summarize a Proposed Plan for a new remedy for landfill site LF044 at the former George Air Force Base. This site is a 0.4 acre landfill containing municipal trash and construction debris that is located in the northeast portion of the base. The site was included in the 1998 Operable Unit 3 Record of Decision. The formerly selected remedy for LF044 consisted of installing a landfill cover, erosion controls and restoration, access and land-use restrictions and, groundwater monitoring. The new Proposed Plan presents a revised remedy consisting of the excavation of all remaining waste for off-site disposal, and site restoration (i.e., clean closure of the landfill). The new remedy was proposed to eliminate long-term monitoring and maintenance that was required by the former remedy, lowers overall costs, and allows the land at LF044 to be released for unrestricted use for future potential redevelopment. Comments from the public will be considered and responded to by the Air Force in its Responsiveness Summary for the Record of Decision Amendment. No objections to the new proposed remedy were expressed during the meeting, and representatives from the U.S. EPA and the Water Board indicated their concurrence with the new remedy.

Following the summary of the Proposed Plan and new preferred alternative, the meeting broke into smaller informal discussion groups. Among the attendees was a reporter from the Victorville Daily Press, who interviewed staff from the Victorville Water Board office. An article regarding the meeting appeared in the April 30 issue of the Daily Press.

5. U.S. Borax Surface Impoundment Expansion – Brianna St. Pierre

U.S. Borax is expanding the capacity of surface impoundments, Boric Acid Ponds (BAPs) 1-5, at the Borax mine in Boron, Kern County. BAP 1-5 are designed to contain Group A and B mining waste and are currently in operation, but were approaching capacity. On February 11, 2015, the Lahontan Water Board adopted amended waste discharge requirements (WDRs), Board Order No. R6V-2006-0025A2, allowing U.S. Borax to expand existing surface impoundments.

Construction of the expanded liner system began immediately on BAP 1, the first surface impoundment to be expanded. This involved earthwork, constructing a new liner system, connecting the new liner system to the existing liner system, and construction quality assurance protocols. Water Board staff inspected the project on March 18, 2015.

The amended WDRs require Water Board staff to review and accept the Construction Quality Assurance (CQA) Report of the expansion prior to discharge. CQA Reports include, among other things, certifications for the material used on site, daily logs, photographic documentation of the installation, records of testing the strength of the seams, records of subgrade compaction adequacy, and as-built figures for the expansion area. Strict adherence to the construction quality assurance protocols and documentation of such is critical to ensure the surface impoundments are constructed in a manner that is protective of water quality. The CQA Report for surface

impoundment BAP 1 was submitted on April 16, 2015, just two weeks after US Borax submitted a revised Report of Waste Discharge (ROWD) for proposed construction of additional surface impoundments at the facility. Response to a ROWD is statutorily required within 30 days and was completed by May 1, with a Board hearing on the reused WDRs anticipated in September.

Submittal of multiple large documents within a short timeframe placed extra pressure on Water Board staff for review in a timely manner. Expedited review of this CQA Report was especially crucial as the surface impoundments were approaching capacity and U.S. Borax needed to utilize the additional capacity gained by the expansion of BAP 1 as soon as possible. Water Board staff reviewed, provided comments, and accepted the CQA Report on May 7, 2015. U.S. Borax began discharging to the newly expanded surface impoundment the same day.

6. Onsite Wastewater Treatment System Policy and Local Agency Management Program - Mike Coony

The Onsite Wastewater Treatment System Policy (Policy) became effective on May 13, 2013. Traditionally, local agencies issue permits to construct onsite wastewater treatment systems (onsite systems); they have not regulated onsite system performance. Local agency regulation has ended when the onsite system is installed. Under the Policy, local agencies must add a performance regulatory program or else be subject to the Policy's restrictive siting standards. A local agency's regulatory program is called a Local Agency Management Program (LAMP). Local agencies desiring to deviate from the Policy's siting standards must submit draft LAMPS by May 13, 2016, and the Water Boards must approve the LAMPS by May 13, 2018. Over the next year, staff will work with local agencies to assist in developing the LAMPs.

Performance regulation established in the LAMP requires local agencies to establish and implement new operational control practices of the Policy. The control practices of significance are the following:

- Local agencies must include requirements for monitoring and inspections for onsite systems that use supplemental treatment, such as aerobic treatment units.
- Local agencies must maintain a water quality assessment program to evaluate impact of onsite system discharges to surface and ground water. Existing water quality assessment programs conducted in onsite system prohibition exemption area can be included in the LAMPs.
- Local agencies must consider additional requirements for onsite system high density areas. In the South Lahontan area, these areas include: Lake Los Angeles, Little Rock, Quartz Hill, and Pearblossom in the Antelope Valley of Los Angeles County, Wrightwood, Phelan, and North Barstow in San Bernardino County, and Rosamond and California City in the Mojave region of Kern County. Requirements could include routine surface and groundwater monitoring, installation of sewers at new subdivisions, and creation of a legal entity to plan and finance construction of a community sewer and treatment system.

Water Board staff will keep the Board informed as progress is made on LAMP development.

7. City Of Victorville, Power Cost Savings - Disinfection System

– John Morales

On April 30, 2015, I amended the dose requirements for the Ultra-Violet (UV) disinfection system stated in the City of Victorville's

Board Order No. R6V-2014-0002 (Order). A statement was included in the Order that allowed the minimum UV dose to be modified by the Executive Officer provided concurrence was obtained from The Division of Drinking Water.

The Victorville Industrial Wastewater Treatment Plant utilizes UV light to disinfect the treated wastewater prior to discharging effluent from the plant. The Division of Drinking Water completed further research on the UV manufacturer technical specifications and relevant guidelines pertaining to the operation of the UV disinfection system. Furthermore, the City also conducted additional tests at the wastewater plant to verify UV system performance based upon the reviewed guidelines. Conclusions from these additional tests allowed for a decreased dose of UV light for obtaining the sufficient disinfection levels.

I supported and approved the recommendations provided by the Division of Drinking Water to decrease the UV dose on the disinfection system.

This modification allows the City to achieve considerable cost savings in the required power requirements to achieve adequate disinfection of treated effluent waste water. The savings obtained from such a decrease corresponds to a power consumption of just under half the energy use from the original UV specification.

8. Tour of Soapmine Road Water Quality Problems - Cindi Mitton

The Mojave Water Agency (MWA) and its consultant, Cal Rural, hosted a tour of the Soapmine Road area of Barstow on May 12. The tour was attended by representatives from the State Board Division of Drinking Water and Division of Financial Assistance State Revolving Fund (SRF) program staff, the City of Barstow and Water Board staff. The purpose of the tour was to view the area affected by perchlorate and nitrate pollution in

groundwater in northern Barstow and discuss potential future projects and funding mechanisms to address these issues.

During the tour, MWA discussed the current status of work under the Entity Formation grant directed to the perchlorate pollution area, and possible future projects that could address long term water supply for other areas near the City. In addition to individual private wells in the Soapmine area, there are other small water purveyors that serve small areas near the City and some of these purveyors are experiencing water quality problems and may need financial assistance. One small local purveyor is currently requesting SRF funding to address arsenic. The City may have an interest in seeing if these areas also want to be part of a larger entity that may ultimately receive services from the City. The scope of the current perchlorate grant may be expanded to incorporate these additional areas. A public meeting will be held later this year to discuss the options that have been identified and receive input from the community and other stakeholders.

This page is intentionally left blank.

ENCLOSURE 3

This page is intentionally left blank.

**Summary of
No Further Action Required Letters Issued
April 16 - May 15, 2015
June 2015 EO Report
State of California
Lahontan Regional Water Quality Control Board**

The Executive Officer finds the unauthorized releases at the following sites pose a low threat to human health, safety, and the environment. The petroleum cases were closed in accordance with the Water Quality Control Policy for Low-Threat Underground Storage Tank Case Closure (Resolution 2012-016). The Policy recognizes contaminant mass often remains after the investment of reasonable remedial effort and this mass may be difficult to remove regardless of the level of additional effort and resources invested. The establishment of the Policy is an effort to maximize the benefits to the people of the State of California through the judicious application of available resources. Non-petroleum cases were closed in accordance with State Water Board Resolution 92-49 and pose a low threat to human health safety, and the environment.

Date Closure Issued	Site Name	Site Address	Case Number	Additional Information
April 30, 2015	OT081, Railroad Fueling System ¹	Former George Air Force Base Near End of Cargo Lane Victorville, San Bernardino County	DOD100239100	http://geotracker.waterboards.ca.gov/profile_report.asp?global_id=DOD100239100
April 30, 2015	UST T5-24, IRP Site 26, Plant Site 5 ²	Air Force Plant 42 2501 Avenue P East Palmdale, Los Angeles County	T10000002907	http://geotracker.waterboards.ca.gov/profile_report.asp?global_id=T10000002907
May 5, 2015	Former Exxon 7-3871 ¹	1500 East Main Street Barstow, San Bernardino County	6B3600575T	http://geotracker.waterboards.ca.gov/profile_report.asp?global_id=T0607100836
May 6, 2015	Former Ronning Property ¹	8784 North Lake Boulevard Kings Beach, Placer County	6T0374A	http://geotracker.waterboards.ca.gov/profile_report.asp?global_id=T0606181132
May 13, 2015	Site 2 Westend Road and North-South Road ¹	Searles Valley Minerals, Inc., PO Box 367, Trona, CA 93592	T10000002368	http://geotracker.waterboards.ca.gov/profile_report.asp?global_id=T10000002368
May 13, 2015	Site 8 Burma Road and North-South Road ¹	Searles Valley Minerals, Inc., PO Box 367, Trona, CA 93592	T10000002374	http://geotracker.waterboards.ca.gov/profile_report.asp?global_id=T10000002374
May 13, 2015	Site 12 Bernhardt Road and Mexican Central Road ¹	Searles Valley Minerals, Inc., PO Box 367, Trona, CA 93592	T10000002378	http://geotracker.waterboards.ca.gov/profile_report.asp?global_id=T10000002378
May 13, 2015	Site 18 Bernhardt Road Site ¹	Searles Valley Minerals, Inc., PO Box 367, Trona, CA 93592	T10000002384	http://geotracker.waterboards.ca.gov/profile_report.asp?global_id=T10000002384

Additional links:

Low-threat UST Case Closure Policy information: http://www.swrcb.ca.gov/ust/lt_cls_plcy.shtml#policy081712

Low-threat UST Case Closure Policy: http://www.waterboards.ca.gov/board_decisions/adopted_orders/resolutions/2012/rs2012_0016atta.pdf

Low-threat UST Case Closure Implementation Plan: http://www.waterboards.ca.gov/board_decisions/adopted_orders/resolutions/2012/110612_6_final_ltcp%20imp%20plan.pdf

Notes:

1. petroleum constituents of concern
2. non-petroleum constituents of concern.

This page is intentionally left blank.

ENCLOSURE 4

This page is intentionally left blank.

EO's Monthly Report
April 16, 2015 - May 15, 2015

COUNTY: PLACER

Discharger/Facility	Location	Basin	Regulated Facility?	Discharge Date	Discharge Volume	Description of Failure	Additional Details	Status
Squaw Valley PSD/Squaw Valley Public SVC District CS	91 Winding Way, North Olympic Valley		Yes	4/26/2015	19,200 gallons	Sewer main blockage resulted in a 19,200-gallon raw sewage discharge to soil and Squaw Creek.	Debris, rags, and flushable wipes created a blockage within the sewer main, causing sewage to discharge from a manhole to the soil and Squaw Creek, located approx. 100 feet from the manhole. Sewage flowed at an estimated rate of 30 gallons per minute.	Blockage cleared and approx. 40 gallons recovered.

*All discharges to surface waters are included in the report.
 Discharges to land of less than 100 gallons are not included in the report.

EO's Monthly Report
April 16, 2015 - May 15, 2015

COUNTY: NEVADA COUNTY

Discharger/Facility	Location	Basin	Regulated Facility?	Discharge Date	Discharge Volume	Description of Failure	Additional Details	Status
Big Rig/Caltrans I-80	Interstate 80 near Donner Lake Exchange	North	No	5/8/2015	100 gallons	Big rig accident on I-80 released 100 gallons of diesel fuel into a storm water basin and then to a Donner Lake tributary.	Diesel fuel discharged via storm water basin's outlet culvert into Donner Lake tributary. Sheen observed and diesel odor detected in small reach of the tributary. No sheen or odor detected at Donner Lake.	Caltrans spill-response contractor skimmed storm water basin to recover diesel fuel, deployed booms in basin, creek, and Donner Lake. Storm water basin will be pumped dry and sediments removed.

COUNTY: SAN BERNARDINO

Discharger/Facility	Location	Basin	Regulated Facility?	Discharge Date	Discharge Volume	Description of Failure	Additional Details	Status
Arrowbear Park County Water District/ Arrowbear Park CWD CS	33146 Hwy 18, Arrowbear Lake; Manhole #216, north side of Hwy 18.	South	Yes	5/10/2015	400 gallons	Sewer main blockage resulted in 400-gallon raw sewage discharge to unpaved surface.	Grease deposition caused 400 gallons of sewage to discharge from manhole to unpaved surface. No surface water body affected.	Blockage cleared and affected area disinfected.

*All discharges to surface waters are included in the report.
 Discharges to land of less than 100 gallons are not included in the report.

ENCLOSURE 5

Lahontan Regional Water Quality Control Board

M E M O R A N D U M

TO: LAHONTAN WATER BOARD MEMBERS



FROM: LAURI KEMPER
ASSISTANT EXECUTIVE OFFICER
LAHONTAN REGIONAL WATER QUALITY CONTROL BOARD

DATE: June 4, 2015

SUBJECT: QUARTERLY VIOLATIONS REPORT, 1ST QUARTER 2015

Attached is the Quarterly Violations Report for January 1, 2015 – March 31, 2015 (1st Quarter 2015). I have included in this memo with the Quarterly Violations Report (1) a Synopsis of 1st Quarter Violations; and (2) a Table of Pending Formal Enforcement Cases.

Synopsis of 1st Quarter 2015 Violations

There were 76 violations entered into the CIWQS and SMARTS databases for the 1st Quarter 2015, compared to the 75 violations entered for the previous quarter. Approximately 40 percent of the violations were associated with two facilities with the remaining violations distributed across multiple facilities. There were no Priority 1 violations this quarter. There were sixty-six (66) Priority 2 violations, of which 16 were related to flow exceedances at Death Valley National Park's Furnace Creek Wastewater Treatment Facility (Furnace Creek Facility), and 16 other violations were related to Victor Valley Wastewater Reclamation Authority's Wastewater Treatment Facility (VWRWA Facility).

The Furnace Creek Facility violations are due to a new waste stream from the National Park's drinking water reverse osmosis (RO) system. The Discharger is evaluating the option of using the RO waste stream for irrigation. Water Board staff has provided direction to the Discharger regarding waste characterization. Staff will use such data to determine if irrigating with the RO waste stream is appropriate.

Of the 16 VWRWA-related violations, 11 of them were exceedances of NPDES effluent limitations [total nitrogen (4), ammonia (5), biological oxygen demand (1), and total coliform (1)]. All but one of the total nitrogen and ammonia violations complied with

KIMBERLY COX, CHAIR | PATTY Z. KOUYOUMDJIAN, EXECUTIVE OFFICER

interim effluent limitations established by an existing Water Board Time Schedule Order, and are therefore, exempt from mandatory minimum penalties (MMPs). Water Board staff is evaluating if the other three effluent-related violations are subject to MMPs.

Molycorp accounted for four (4) of the Priority 2 violations in this report. Water Board staff continues to evaluate Molycorp’s performance since issuing a comprehensive Notice of Violation in early 2013. Staff has identified that the 204 Thickener Unit is the source for a number of unauthorized discharges. Staff will work with Molycorp to determine if there are gaps in the spill prevention plans submitted in response to the Notice of Violation. Staff will continue to work with Molycorp to reduce the number of discharges and update operations, maintenance, and training plans as necessary.

There were ten (10) Priority 3 violations, the majority of which were associated with late self-monitoring reports.

Table of Pending Formal Enforcement Cases

Facility	Alleged Violations Summary	Schedule Action (Quarter/Year)
Susanville CSD WWTP – Susanville, Lassen Co.	Exceeding effluent limitations; subject to MMPs	2 nd Quarter, 2015
Dutch Dairy – Helendale, San Bernardino Co.	Nitrate pollution in groundwater	2 nd Quarter, 2015
B & E Dairy – Barstow, San Bernardino Co.	Elevated nitrates in groundwater	2 nd Quarter, 2015
California Dept. of Fish and Wildlife – Hot Creek Hatchery	Exceeding effluent limitations subject to MMPs	2 nd Quarter, 2015
California Dept. of Fish and Wildlife – Fish Springs Hatchery	Exceeding effluent limitations subject to MMPs	2 nd Quarter, 2015
LADWP	Lee Vining Creek Diversion Structure Settlement	June 2015
Pacific Gas and Electric – Hinkley Compressor Station, San Bernardino Co.	Ongoing chromium groundwater contamination	3 rd Quarter, 2015

Attachment: 1st Quarter 2015 Quarterly Violations Report

**Quarterly Violations Report
January 1, 2015 - March 31, 2015**

Priority	Agency	Facility	Violation ID	Violation Type	Violation Program	Date Occured	Violation Description	Comments	Corrective Action	Enforcement Action	County
2	Adelanto Public Utility Authority	Adelanto WWTP	988143	Order Conditions	WDRMUNILRG	1/25/2015	Freeboard value 1.5 exceeded minimum 2. Violates Board Order No. R6V-2013-0058 IV.D.	null	Discharger states that the cause was human error; staff forgot to switch ponds on the previous afternoon. Discharger will develop an administrative control to prevent repeat situation.	null	San Bernardino
2	Bishop City	Bishop Sewage Treatment Plant	990233	Water Quality -> Effluent -> CAT1	WDRMUNILRG	1/15/2015	Biochemical Oxygen Demand (BOD) (5-day @ 20 Deg. C) 30-Day Median limit is 50.0 mg/L and reported value was 51.0 mg/L.	Violates Board Order No. R6V-94-0025 I.A.3.	Temps raised and BOD went down due to ice melting.	null	Inyo
2	Bridgeport PUD	Bridgeport PUD Treatment Plant	988003	Reporting -> Deficient Reporting	WDRMUNILRG	2/1/2015	BOD lab sheets were not submitted and no information regarding discharge with respect to BOD samples provided. Therefore compliance with BOD effluent limits cannot be determined.	null	null	Staff Enforcement Letter	Mono
2	Ca Dept of Fish & Game Independence	Hot Creek Hatchery NPDES	990207	Water Quality -> Effluent -> CAT1	NPDNONMUNIPRCS	3/2/2015	Nitrite Plus Nitrate (as N) Monthly Average (Mean) limit is 0.49 mg/L and reported value was 0.59 mg/L at M-003.	null	Supply springs historical samples have always tested higher for nitrates than discharge limits. This may be exacerbated by unprecedented drought conditions.	null	Mono
2	Ca Dept of Fish & Game Independence	Hot Creek Hatchery NPDES	990211	Water Quality -> Effluent -> CAT1	NPDNONMUNIPRCS	3/2/2015	Nitrite Plus Nitrate (as N) Monthly Average (Mean) limit is 0.49 mg/L and reported value was 0.59 mg/L at M-003.	null	Supply springs historical samples have always tested higher for nitrates than discharge limits. This may be exacerbated by unprecedented drought conditions.	null	Mono
2	Caillier, Karen	Roadhouse Restaurant	990176	Water Quality -> Effluent -> CAT1	WDRMUNINIENROTH	2/24/2015	Total Dissolved Solids (TDS) Daily Maximum limit is 1000 mg/L and reported value was 2700 mg/L.	Violates Board Order 6-97-10-DWQ-04 General Permit.	Discharger did not propose or identify any corrective actions taken.	null	San Bernardino
2	California City	California City WTF	986162	Reporting -> Deficient Reporting	WDRMUNILRG	1/31/2015	No Coliform data collected on weekends or holidays. Violates Board Order No. R6V-2000-0095 WDR II.d.2 MRP I.B.2.	null	Discharger did not propose or identify any corrective actions taken.	null	Kern
2	California City	California City WTF	989050	Reporting -> Deficient Reporting	WDRMUNILRG	2/28/2015	No maximum instantaneous flow rate data. Violate Board Order No. R6V-00-094 MRP I.A.3. No daily flow data to Central Park Lake. Violate Board Order No. R6V-00-094 MRP I.A.6. No Coliform data from weekends and holidays. Violates Board Order No. R6V-00-094 MRP I.B.2. No sludge data. Violates Board Order No. R6V-00-094 MRP I.D.	null	Discharger did not propose or identify any corrective actions taken.	null	Kern
2	Chevron Mining Inc R6(+)	Onsite Evaporation Ponds	985865	Order Conditions	LNDISPOTH	1/15/2015	Unauthorized release 700 gallons mining process wastewater (brine) discharged from opened valve on the brine HDPE suction pipeline connected to the Lined Evap Pond P-30C to plant. Discharged to land. Violates Board Order No. R6V-2005-0011, WDRs II.A.1. and I.A.7.	Discharger claimed unknown cause of open valve. Discharger suspects possible unintentional action by indigenous inhabitants.	Excavations removed impacted soil for about 900 feet extent along the road. the valve was locked out.	Oral Communication	San Bernardino

**Quarterly Violations Report
January 1, 2015 - March 31, 2015**

Priority	Agency	Facility	Violation ID	Violation Type	Violation Program	Date Occured	Violation Description	Comments	Corrective Action	Enforcement Action	County
2	County of San Bernardino	RANCHERO ROAD	S856717	SW - Deficient BMP Implementation	CONSTW	3/19/2015	BMPs for slope stabilization were inadequate. Rills and deposition of sediment in culverts were observed. BMPs no longer installed were observed scattered on terrace.	null	null	null	San Bernardino
2	Helendale CSD	Helendale Silverlakes STP	987439	Water Quality -> Receiving Water -> Groundwater	WDRMUNILRG	1/31/2015	TDS values exceeded MCL (1000 mg/L) in multiple wells.	TDS: MW-2 (3420 mg/L), MW-3 (1090 mg/L), and MW-4 (1980 mg/L). Violates Board Order No. R6V-01-039 WDR II.E.1 MRP I.E.	Discharger did not propose or identify any corrective actions taken.	null	San Bernardino
2	Helendale CSD	Helendale Silverlakes STP	990816	Order Conditions	WDRMUNILRG	2/8/2015	Pond 1 Freeboard (0.8 in) below minimum allowed (18 in). Violates Board Order No. R6V-01-039 I.E.3. MRP I.A.6.	null	Discharger did not propose or identify any corrective actions taken.	null	San Bernardino
2	Hesperia City	Ranchero Road Undercrossing	S856725	SW - Deficient BMP Implementation	CONSTW	3/19/2015	Inadequate BMPs for stabilization of slopes at site with level 2 risk. WB staff observed rills on slopes and deposits of sediment in storwater intake. Inadequate germination of hydroseed. Seed mix appears to not be appropriate for local climate conditions. Site appears to have inadequate BMPs to allow infiltration of rainwater to germinate seeds applied for stabilization.	null	null	null	San Bernardino
2	Inyo Cnty Dept of Parks & Rec	Tecopa Hot Springs Park WWTF	990074	Reporting -> Late Report	WDRMUNIOTH	1/31/2015	Submitted annual SMR 18 days late. Violates Board Order No. R6V-94-102 MRP II.C.	Annual SMR was due on 01/30/2015 and received on 02/17/2015.	Discharger did not propose or identify any corrective actions taken.	null	Inyo
2	Lake Arrowhead Community Service	Lake Arrowhead Csd CS	984130	Water Quality -> Sanitary Sewer Overflow/Spill/	SSOMUNILRG	1/12/2015	Root intrusion caused 600 gallons of sewage to spill from Manhole at 235 Golf Course Road to Drainage Channel:Paved Surface:Separate Storm Drain:Street/Curb and Gutter:Surface Water. Surface water body affected (Grass Valley Creek). Four hundred (400) gallons recovered, 200 gallons discharged into Grass Valley Creek.	The Discharger violates General SSS Order 2006-0003-DWQ requirement I.C.1. The Discharger also violates WDR Order R6V-2009-0037 I.D.1 (no bypass) and I.D.8 (discharged to unauthorized loaction).	Cleaned-Up:Contained all or portion of spill:Restored flow:Returned Portion of Spill to Sanitary Sewer System. Discharger conducted daily coliform sampling of upstream, point of entry, and downstream points until downstream became equal to or less than upstream. Ground cleanup complete and surface water quality restored. No further action needed. No enforcement recommended because discharge volume is small and receiving water quality was restored within 3 days (on 1/15/15).	null	San Bernardino
2	Lee Vining PUD	Lee Vining WTF	990212	Reporting -> Deficient Reporting	WDRMUNIOTH	3/31/2015	No Freeboard data. Violates Board Order No. R6V-1984-0090 MRP Flow Monitoring #4. No Operator Certification data. Violates Board Order No. R6V-1984-0090 MRP O&M.	null	Discharger did not propose or identify any corrective actions taken.	null	Mono
2	Los Angeles City DWP	Independence WWTF	990226	Water Quality -> Effluent -> OEV	WDRMUNILRG	2/26/2015	pH Instantaneous Maximum limit is 9.0 SU and reported value was 10.7 SU.	Violated Board Order No. R6V-1995-0064 I.A.3.	Discharger did not propose or identify any corrective actions taken.	null	Inyo
2	Mojave PUD	Mojave STP	988134	Water Quality -> Effluent -> OEV	WDRMUNILRG	1/31/2015	pH Daily Maximum limit is 9.0 SU and reported value was 9.02 SU.	Violates Board Order No. R6V-01-036 Section I.A.5.	Discharger did not propose or identify any corrective actions taken.	null	Kern
2	Mojave PUD	Mojave STP	988135	Order Conditions	WDRMUNILRG	1/31/2015	Freeboard in D-1 reported as 1.9 feet, minimum allowed is 2 feet. Violates Board Order No. R6V-01-036 Section I.B.9.	null	Discharger did not propose or identify any corrective actions taken.	null	Kern

**Quarterly Violations Report
January 1, 2015 - March 31, 2015**

Priority	Agency	Facility	Violation ID	Violation Type	Violation Program	Date Occured	Violation Description	Comments	Corrective Action	Enforcement Action	County
2	Molycorp Minerals LLC	Mountain Pass Mine & Mill Ops	986568	Order Conditions	LNDISPOTH	1/28/2015	Unauthorized released 500-gallons tailings slurry to ground. Violates Board Order No. R6V-2010-0047, WDR II.A.6. and A.7.	During solids removal from Tank TK23, slurry overflowed secondary containment to ground. Due to operator error. Slurry contains moderate to low levels of TDS, various metals, strontium, chloride, lanthanum, sulfate, and sodium.	Access tank manhole hole was shut. Slurry was recovered by vacuum truck, mixed with paste solids for disposal to the lined paste tailings disposal unit (NWTDF).	Oral Communication	San Bernardino
2	Molycorp Minerals LLC	Onsite Evaporation Ponds	985862	Order Conditions	LNDISPOTH	1/12/2015	Unauthorized 21,600-gallon release of contaminated groundwater (remediation extraction system) wastewater outside of disposal facilities to adjacent land and into natural dry wash. Violates Board Order No R6V-2005-0011, WDR II.A.1	Requested final spill report of incident on 1/12/15. Due 1/27/15. received 1/27/15.	Immediate action: pump was shut off, flow valve closed. Replaced broken sample port valve, and installed check valves on all recovery well pipelines. Excavated (for disposal) impacted soil in those areas of the road only. No cleanup proposed for impacted soil in dry wash.	Oral Communication	San Bernardino
2	Molycorp Minerals LLC	Onsite Evaporation Ponds	985873	Order Conditions	LNDISPOTH	1/20/2015	Unauthorized 50,000-gallon release of mixture: potable water & mining process wastewater (204 thickener wastewater) outside of disposal facility- (brine, acidic pH 1); of this amount, estimated 2,000 gallons wastewater contribution. Released to adjacent land and dry wash. Violates Board Order No R6V-2005-0011, WDR II.A.1	Requested final spill report of incident on 1/20/15. Due 2/3/15. received 2/4/15. (waiting on final soil analysis) Due to failed 8-in wastewater pipeline connections.	Excavated impacted soil along road areas and portion of wash. areas not remediated included the wash north of P-20A stormwater catchment basin and within the P-20A basin. Replaced 20 feet of HDPE wastewater pipeline.	Oral Communication	San Bernardino
2	Molycorp Minerals LLC	Onsite Evaporation Ponds	988010	Order Conditions	LNDISPOTH	3/2/2015	Unauthorized 10,000-gallon release of mining process wastewater (204 thickener wastewater) outside of disposal facility. Released to adjacent land and ephemeral wash (Wheaton Wash). Storm water runoff in wash was occurring at the time of release. Violates Board Order No R6V-2005-0011, WDR II.A.1	Requested final spill report of incident on 3/2/15. Due 3/12/15. received 3/13/15. (waiting on final soil analysis) Due to heavy equipment operator damaged the pipeline.	excavated impacted soil along portions of the wash areas. areas not remediated included the areas heavily vegetated in wash. Replaced repaired portion of damaged wastewater pipeline.	Oral Communication	San Bernardino
2	Ridgecrest City	Ridgecrest WTF	987988	Reporting -> Deficient Reporting	WDRMUNILRG	2/28/2015	No Coliform data. Violates Board Order No. 6-93-086 MRP I.B. No crop data. Violates Board Order No. 6-93-086 MRP I.C.2-4	null	Discharger did not propose or identify any corrective actions taken.	null	Kern
2	Riverside Cement - Oro Grande	Oro Grande Cement Plant	987993	Reporting -> Deficient Reporting	LNDISPOTH	1/30/2015	Failed to provide all data required for evaluation monitoring. Violated Board Order 98-1, MRP section II.C.1.c	The SMR was missing a map illustrating the sample concentrations of each VOC and COC detected.	Violation not noted and corrective measures not discussed by the discharger.	null	San Bernardino
2	Rolling Green Utilities Inc	Rolling Green Terrace WTF	985598	Reporting -> Deficient Reporting	WDRMUNIOH	1/7/2015	No Groundwater monitoring data. Violates Board Order No. R6V-87-010 MRP I.C.1.	null	Discharger did not propose or identify any corrective actions taken.	Oral Communication	Inyo

**Quarterly Violations Report
January 1, 2015 - March 31, 2015**

Priority	Agency	Facility	Violation ID	Violation Type	Violation Program	Date Occurred	Violation Description	Comments	Corrective Action	Enforcement Action	County
2	San Bernardino Cnty Waste	Heaps Peak SWDS Post Closure	986943	Basin Plan Prohibition	LFNONOPER	1/8/2015	Discharged waste (5,000 gallons leachate) to ground in the Deep Creek watershed above 3200 ft elevation. Chapter 4, (2)mojave hydrologic unit. Laboratory analysis indicate trace concentrations of TPH and volatile organic constituents. high concentrations of manganese, and iron. trace TPH detected in soil, no VOCs detected soil.	Released leachate from leachate tank due to cracked valve.	Replace valve, wrapped with heat trace for prevention from freezing.	Oral Communication	San Bernardino
2	Snow Valley Ski Resort	Snow Valley Ski Area Sediment	985579	BMP	WDRNONMUNIPRCS	1/29/2015	Violations of: WDR 6-94-60 I. C.1.6-11 and I.D.1 to 4. Multiple instances of inadequate BMP implementation for slope stabilization, sediment control, and erosion include but are not limited to: A. Hay bales that were used as sediment filters were not staked or secured to prevent them from floating during storm events. B. Hay bales that were used as check dams were not maintained within the last four years, scour shows were flows went around the hay bales. C. Many water bars were not properly installed. The slope of the swales within the water bars was too steep to prevent rilling. D. Stock piles of sediment were deposited within North Fork of Deep Creek and within the flood plain of North Fork of Deep Creek. E. Stock Piles of wood and vegetative wastes were kept in a tributary of North Fork of Deep Creek. F. Slopes created for snow boarding lacked effective stabilization BMPs and were rilled.	null	null	Notice of Violation	San Bernardino
2	Sunray Energy Inc	Segs I & II - Three Surface Impoundments & Land Treatment Unit	985788	Order Conditions	LFNONOPER	1/12/2015	Unauthorized 100g Thermanol HTF release (reduced from initial 300g est.) due to human error, SEGS II power block: system pressurized with valves left open. Violates Board Order No. 6-96-160, WDR II.A.3.	null	Free HTF liquid vacuumed up, impacted soils removed to onsite land treatment unit.	null	San Bernardino
2	TR Lodging Enterprises Inc	Oak Tree Inn	990071	Water Quality -> Effluent -> OEV	WDRMUNIWOTS	1/25/2015	Flow Daily Maximum limit is 0.0051 MGD and reported value was 0.006 MGD.	Board Order limit is 0.0051 MGD, plant capacity is 0.010 MGD. Violated Board Order No. R6V-2001-0032 I.A.1.	Discharger did not propose or identify any corrective actions taken.	null	San Bernardino
2	TR Lodging Enterprises Inc	Oak Tree Inn	990072	Water Quality -> Effluent -> OEV	WDRMUNIWOTS	2/22/2015	Flow Daily Maximum limit is 0.0051 MGD and reported value was 0.006 MGD.	Board Order limit is 0.0051 MGD, plant capacity is 0.010 MGD. Violated Board Order No. R6V-2001-0032 I.A.1.	Discharger did not propose or identify any corrective actions taken.	null	San Bernardino
2	TR Lodging Enterprises Inc	Oak Tree Inn	990070	Water Quality -> Receiving Water -> Groundwater	WDRMUNIWOTS	3/10/2015	Thallium (TI) exceeded MCL (0.002 mg/L) twice in the 1st quarter SMR. Violated Board Order No. R6V-2001-0032 I.B.1.b.	Well-2 (0.0067 mg/L), and Well-3 (0.0026 mg/L).	Discharger did not propose or identify any corrective actions taken.	null	San Bernardino
2	TR Lodging Enterprises Inc	Oak Tree Inn	990073	Water Quality -> Effluent -> OEV	WDRMUNIWOTS	3/30/2015	Flow Daily Maximum limit is 0.0051 MGD and reported value was 0.006 MGD.	Board Order limit is 0.0051 MGD, plant capacity is 0.010 MGD. Violated Board Order No. R6V-2001-0032 I.A.1.	Discharger did not propose or identify any corrective actions taken.	null	San Bernardino
2	USDA Forest Service Lassen National Forest Susanville	Eagle Lake Rec Area	987994	Deficient Monitoring	WDRMUNIOH	2/16/2015	Report was missing some of the required data and the report was late	null	null	Staff Enforcement Letter	Lassen

**Quarterly Violations Report
January 1, 2015 - March 31, 2015**

Priority	Agency	Facility	Violation ID	Violation Type	Violation Program	Date Occured	Violation Description	Comments	Corrective Action	Enforcement Action	County
2	USDI National Park Service Death Valley	DVNM HDQ Furnace Creek WWTF	990142	Water Quality -> Effluent -> OEV	WDRMUNIOTH	1/3/2015	Flow Daily Maximum limit is 0.08 MGD and reported value was 0.085 MGD.	Violates Board Order No. R6V-1986- 0084 I.A.1.	Concentrate from RO plant going into the sewer system now. Causing low DO to ponds and possible odor problems in the near future. Have requested a generator and aerators to resolve DO problem and avoid odor problems.	null	Inyo
2	USDI National Park Service Death Valley	DVNM HDQ Furnace Creek WWTF	990144	Water Quality -> Effluent -> OEV	WDRMUNIOTH	1/4/2015	Flow Daily Maximum limit is 0.08 MGD and reported value was 0.084 MGD.	Violates Board Order No. R6V-1986- 0084 I.A.1.	Concentrate from RO plant going into the sewer system now. Causing low DO to ponds and possible odor problems in the near future. Have requested a generator and aerators to resolve DO problem and avoid odor problems.	null	Inyo
2	USDI National Park Service Death Valley	DVNM HDQ Furnace Creek WWTF	990145	Water Quality -> Effluent -> OEV	WDRMUNIOTH	1/6/2015	Flow Daily Maximum limit is 0.08 MGD and reported value was 0.081 MGD.	Violates Board Order No. R6V-1986- 0084 I.A.1.	Concentrate from RO plant going into the sewer system now. Causing low DO to ponds and possible odor problems in the near future. Have requested a generator and aerators to resolve DO problem and avoid odor problems.	null	Inyo
2	USDI National Park Service Death Valley	DVNM HDQ Furnace Creek WWTF	990147	Water Quality -> Effluent -> OEV	WDRMUNIOTH	1/8/2015	Flow Daily Maximum limit is 0.08 MGD and reported value was 0.083 MGD.	Violates Board Order No. R6V-1986- 0084 I.A.1.	Concentrate from RO plant going into the sewer system now. Causing low DO to ponds and possible odor problems in the near future. Have requested a generator and aerators to resolve DO problem and avoid odor problems.	null	Inyo
2	USDI National Park Service Death Valley	DVNM HDQ Furnace Creek WWTF	990148	Water Quality -> Effluent -> OEV	WDRMUNIOTH	1/11/2015	Flow Daily Maximum limit is 0.08 MGD and reported value was 0.091 MGD.	Violates Board Order No. R6V-1986- 0084 I.A.1.	Concentrate from RO plant going into the sewer system now. Causing low DO to ponds and possible odor problems in the near future. Have requested a generator and aerators to resolve DO problem and avoid odor problems.	null	Inyo
2	USDI National Park Service Death Valley	DVNM HDQ Furnace Creek WWTF	990150	Water Quality -> Effluent -> OEV	WDRMUNIOTH	1/14/2015	Flow Daily Maximum limit is 0.08 MGD and reported value was 0.100 MGD.	Violates Board Order No. R6V-1986- 0084 I.A.1.	Concentrate from RO plant going into the sewer system now. Causing low DO to ponds and possible odor problems in the near future. Have requested a generator and aerators to resolve DO problem and avoid odor problems.	null	Inyo
2	USDI National Park Service Death Valley	DVNM HDQ Furnace Creek WWTF	990153	Water Quality -> Effluent -> OEV	WDRMUNIOTH	1/18/2015	Flow Daily Maximum limit is 0.08 MGD and reported value was 0.085 MGD.	Violates Board Order No. R6V-1986- 0084 I.A.1.	Concentrate from RO plant going into the sewer system now. Causing low DO to ponds and possible odor problems in the near future. Have requested a generator and aerators to resolve DO problem and avoid odor problems.	null	Inyo
2	USDI National Park Service Death Valley	DVNM HDQ Furnace Creek WWTF	990155	Water Quality -> Effluent -> OEV	WDRMUNIOTH	1/23/2015	Flow Daily Maximum limit is 0.08 MGD and reported value was 0.089 MGD.	Violates Board Order No. R6V-1986- 0084 I.A.1.	Concentrate from RO plant going into the sewer system now. Causing low DO to ponds and possible odor problems in the near future. Have requested a generator and aerators to resolve DO problem and avoid odor problems.	null	Inyo

**Quarterly Violations Report
January 1, 2015 - March 31, 2015**

Priority	Agency	Facility	Violation ID	Violation Type	Violation Program	Date Occured	Violation Description	Comments	Corrective Action	Enforcement Action	County
2	USDI National Park Service Death Valley	DVNM HDQ Furnace Creek WWTF	990156	Water Quality -> Effluent -> OEV	WDRMUNIOTH	1/24/2015	Flow Daily Maximum limit is 0.08 MGD and reported value was 0.112 MGD.	Violates Board Order No. R6V-1986- 0084 I.A.1.	Concentrate from RO plant going into the sewer system now. Causing low DO to ponds and possible odor problems in the near future. Have requested a generator and aerators to resolve DO problem and avoid odor problems.	null	Inyo
2	USDI National Park Service Death Valley	DVNM HDQ Furnace Creek WWTF	990158	Water Quality -> Effluent -> OEV	WDRMUNIOTH	1/27/2015	Flow Daily Maximum limit is 0.08 MGD and reported value was 0.083 MGD.	Violates Board Order No. R6V-1986- 0084 I.A.1.	Concentrate from RO plant going into the sewer system now. Causing low DO to ponds and possible odor problems in the near future. Have requested a generator and aerators to resolve DO problem and avoid odor problems.	null	Inyo
2	USDI National Park Service Death Valley	DVNM HDQ Furnace Creek WWTF	990161	Water Quality -> Effluent -> OEV	WDRMUNIOTH	2/1/2015	Flow Daily Maximum limit is 0.08 MGD and reported value was 0.090 MGD.	Violates Board Order No. R6V-1986- 0084 I.A.1.	Concentrate from RO plant going into the sewer system now. Causing low DO to ponds and possible odor problems in the near future. Have requested a generator and aerators to resolve DO problem and avoid odor problems.	null	Inyo
2	USDI National Park Service Death Valley	DVNM HDQ Furnace Creek WWTF	990163	Water Quality -> Effluent -> OEV	WDRMUNIOTH	2/15/2015	Flow Daily Maximum limit is 0.08 MGD and reported value was 0.088 MGD.	Violates Board Order No. R6V-1986- 0084 I.A.1.	Concentrate from RO plant going into the sewer system now. Causing low DO to ponds and possible odor problems in the near future. Have requested a generator and aerators to resolve DO problem and avoid odor problems.	null	Inyo
2	USDI National Park Service Death Valley	DVNM HDQ Furnace Creek WWTF	990164	Water Quality -> Effluent -> OEV	WDRMUNIOTH	3/7/2015	Flow Daily Maximum limit is 0.08 MGD and reported value was 0.158 MGD.	Violates Board Order No. R6V-1986- 0084 I.A.1.	Concentrate from RO plant going into the sewer system now. Causing low DO to ponds and possible odor problems in the near future. Have requested a generator and aerators to resolve DO problem and avoid odor problems.	null	Inyo
2	USDI National Park Service Death Valley	DVNM HDQ Furnace Creek WWTF	990165	Water Quality -> Effluent -> OEV	WDRMUNIOTH	3/25/2015	Flow Daily Maximum limit is 0.08 MGD and reported value was 0.085 MGD.	Violates Board Order No. R6V-1986- 0084 I.A.1.	Concentrate from RO plant going into the sewer system now. Causing low DO to ponds and possible odor problems in the near future. Have requested a generator and aerators to resolve DO problem and avoid odor problems.	null	Inyo
2	USDI National Park Service Death Valley	DVNM HDQ Furnace Creek WWTF	990166	Water Quality -> Effluent -> OEV	WDRMUNIOTH	3/27/2015	Flow Daily Maximum limit is 0.08 MGD and reported value was 0.081 MGD.	Violates Board Order No. R6V-1986- 0084 I.A.1.	Concentrate from RO plant going into the sewer system now. Causing low DO to ponds and possible odor problems in the near future. Have requested a generator and aerators to resolve DO problem and avoid odor problems.	null	Inyo
2	USDI National Park Service Death Valley	DVNM HDQ Furnace Creek WWTF	990167	Water Quality -> Effluent -> OEV	WDRMUNIOTH	3/31/2015	Flow Daily Maximum limit is 0.08 MGD and reported value was 0.082 MGD.	Violates Board Order No. R6V-1986- 0084 I.A.1.	Concentrate from RO plant going into the sewer system now. Causing low DO to ponds and possible odor problems in the near future. Have requested a generator and aerators to resolve DO problem and avoid odor problems.	null	Inyo

Quarterly Violations Report
January 1, 2015 - March 31, 2015

Priority	Agency	Facility	Violation ID	Violation Type	Violation Program	Date Occurred	Violation Description	Comments	Corrective Action	Enforcement Action	County
2	Victor Valley Wastewater Reclamation Authority	Victor Valley Wastewater Reclamation Authority WTP	990549	Water Quality -> Effluent -> CAT1	NPDMUNILRG	1/27/2015	Nitrogen, Total (as N) Daily Maximum limit is 12.3 mg/L and reported value was 13.1 mg/L at EFF-001.	Violates Board Order No. R6V-2013-0038 WDR IV.A.1.a. Level is within R6V-2014-0039 TSO parameters.	Discharger did not propose or identify any corrective actions taken.	null	San Bernardino
2	Victor Valley Wastewater Reclamation Authority	Victor Valley Wastewater Reclamation Authority WTP	988595	Water Quality -> Effluent -> OEV	NPDMUNILRG	2/12/2015	Total Coliform Instantaneous Maximum limit is 240 MPN/100 mL and reported value was 280 MPN/100 mL at EFF-001.	null	VVWRA has tasked the operators involved before and during the presumed anomaly result of the total coliform hit with developing a SOP for changing out the sanitizing solution, and document training provided to the remainder of the operators. VVWRA provided training to our operators on Thursday February 26, 2015 to ensure the SOP titled "VVWRA Daily Collection of Coliform Grab Samples" is followed in the future. VVWRA has also created a monthly PM within our CMMS system to ensure this task is accomplished on schedule.	null	San Bernardino
2	Victor Valley Wastewater Reclamation Authority	Victor Valley Wastewater Reclamation Authority WTP	990553	Water Quality -> Effluent -> CAT1	NPDMUNILRG	2/17/2015	Ammonia, Total (as N) Daily Maximum limit is 1.6 mg/L and reported value was 4.0 mg/L at EFF-001.	Violates Board Order No. R6V-2013-0038 WDR IV.A.1.a. Level is within R6V-2014-0039 TSO parameters.	Discharger did not propose or identify any corrective actions taken.	null	San Bernardino
2	Victor Valley Wastewater Reclamation Authority	Victor Valley Wastewater Reclamation Authority WTP	990551	Water Quality -> Effluent -> CAT1	NPDMUNILRG	2/28/2015	Biochemical Oxygen Demand (BOD) (5-day @ 20 Deg. C) Monthly Average (Mean) limit is 10.0 mg/L and reported value was 10.529 mg/L at EFF-001.	Violates Board Order No. R6V-2013-0038 WDR IV.A.1.a. .	Discharger did not propose or identify any corrective actions taken.	null	San Bernardino
2	Victor Valley Wastewater Reclamation Authority	Victor Valley Wastewater Reclamation Authority WTP	990552	Water Quality -> Effluent -> CAT1	NPDMUNILRG	2/28/2015	Ammonia, Total (as N) Monthly Average (Mean) limit is 0.54 mg/L and reported value was 1.2875 mg/L at EFF-001.	Violates Board Order No. R6V-2013-0038 WDR IV.A.1.a. Level is within R6V-2014-0039 TSO parameters.	Discharger did not propose or identify any corrective actions taken.	null	San Bernardino
2	Victor Valley Wastewater Reclamation Authority	Victor Valley Wastewater Reclamation Authority WTP	990554	Water Quality -> Effluent -> CAT1	NPDMUNILRG	2/28/2015	Nitrogen, Total (as N) Monthly Average (Mean) limit is 10.3 mg/L and reported value was 10.73 mg/L at EFF-001.	Violates Board Order No. R6V-2013-0038 WDR IV.A.1.a. Level is within R6V-2014-0039 TSO parameters.	Discharger did not propose or identify any corrective actions taken.	null	San Bernardino
2	Victor Valley Wastewater Reclamation Authority	Victor Valley Wastewater Reclamation Authority WTP	990561	Water Quality -> Effluent -> CAT1	NPDMUNILRG	3/3/2015	Ammonia, Total (as N) Daily Maximum limit is 1.6 mg/L and reported value was 3.5 mg/L at EFF-001.	Violates Board Order No. R6V-2013-0038 WDR IV.A.1.a. Level is within R6V-2014-0039 TSO parameters.	Due to reduced aeration capacity for nitrification and increase Ammonia-N loads to the treatment plant the final effluent Ammonia-N concentration exceeded the TSO Daily Max for Tuesday March 12, 2015. Once aware staff immediately took action and secured flow to the Mojave River and focused on balancing out the Ammonia-N load and improving nitrification process.	null	San Bernardino
2	Victor Valley Wastewater Reclamation Authority	Victor Valley Wastewater Reclamation Authority WTP	990565	Water Quality -> Effluent -> CAT1	NPDMUNILRG	3/10/2015	Nitrogen, Total (as N) Daily Maximum limit is 12.3 mg/L and reported value was 18.43 mg/L at EFF-001.	Violates Board Order No. R6V-2013-0038 WDR IV.A.1.a. Level is within R6V-2014-0039 TSO parameters.	Discharger did not propose or identify any corrective actions taken.	null	San Bernardino
2	Victor Valley Wastewater Reclamation Authority	Victor Valley Wastewater Reclamation Authority WTP	989524	Water Quality -> Effluent -> CAT1	NPDMUNILRG	3/12/2015	Ammonia, Total (as N) Daily Maximum limit is 6.7 mg/L and reported value was 9.2 mg/L at EFF-001.	null	Once aware staff immediately took action and secured flow to the Mojave River and focused on balancing out the Ammonia-N load and improving nitrification process. No other limitations were exceeded.	null	San Bernardino

**Quarterly Violations Report
January 1, 2015 - March 31, 2015**

Priority	Agency	Facility	Violation ID	Violation Type	Violation Program	Date Occured	Violation Description	Comments	Corrective Action	Enforcement Action	County
2	Victor Valley Wastewater Reclamation Authority	Victor Valley Wastewater Reclamation Authority WTP	990203	Order Conditions	WDRMUNILRG	3/29/2015	Failed to maintain minimum freeboard (2 feet) in Percolation Pond 13. Violates Board Order No. R6V-2012-0058 II.A.8.	Freeboard measurement was 1.1 feet.	Discharger did not propose or identify any corrective actions taken.	null	San Bernardino
2	Victor Valley Wastewater Reclamation Authority	Victor Valley Wastewater Reclamation Authority WTP	990562	Water Quality -> Effluent -> CAT1	NPDMUNILRG	3/31/2015	Ammonia, Total (as N) Monthly Average (Mean) limit is 0.54 mg/L and reported value was 2.784 mg/L at EFF-001.	Violates Board Order No. R6V-2013-0038 WDR IV.A.1.a. Level is within R6V-2014-0039 TSO parameters.	Due to reduced aeration capacity for nitrification and increase Ammonia-N loads to the treatment plant the final effluent Ammonia-N concentration exceeded the TSO Daily Max for Tuesday March 12, 2015. Once aware staff immediately took action and secured flow to the Mojave River and focused on balancing out the Ammonia-N load and improving nitrification process.	null	San Bernardino
2	Victor Valley Wastewater Reclamation Authority	Victor Valley Wastewater Reclamation Authority WTP	990564	Water Quality -> Effluent -> CAT1	NPDMUNILRG	3/31/2015	Nitrogen, Total (as N) Monthly Average (Mean) limit is 10.3 mg/L and reported value was 11.52 mg/L at EFF-001.	Violates Board Order No. R6V-2013-0038 WDR IV.A.1.a. Level is within R6V-2014-0039 TSO parameters.	Violates Board Order No. R6V-2013-0038 WDR IV.A.1.a. Level is within R6V-2014-0039 TSO parameters.	null	San Bernardino
2	Victor Valley Wastewater Reclamation Authority	Westwinds Golf Course	990206	Reporting -> Deficient Reporting	REC	1/31/2015	No Turbidity data. Violates Board Order No. R6V-2003-0028 III.H MRP I.B.3.a-h. No freeboard data. Violates Board Order No. R6V-2003-0028 III.H MRP I.D.1.	null	Discharger did not propose or identify any corrective actions taken.	null	San Bernardino
2	Victor Valley Wastewater Reclamation Authority	Westwinds Golf Course	990208	Water Quality -> Effluent -> OEV	REC	2/12/2015	Total Coliform Instantaneous Maximum limit is 240 MPN/100 mL and reported value was 280 MPN/100 mL.	Violates Board Order No. R6V-2003-0028 MRP I.B.4.c.	Discharger believes the cause to be environmental contamination. The pole used to collect the sample may have been dipped into contaminated solution. A SOP has been written and training provided for changing the dipping solution. Changing the solution has now been made a monthly PM.	null	San Bernardino
2	Victor Valley Wastewater Reclamation Authority	Westwinds Golf Course	990209	Reporting -> Deficient Reporting	REC	2/28/2015	No Turbidity data. Violates Board Order No. R6V-2003-0028 MRP I.B.3.a-h.	null	Discharger did not propose or identify any corrective actions taken.	null	San Bernardino
2	Victor Valley Wastewater Reclamation Authority	Westwinds Golf Course	990210	Reporting -> Deficient Reporting	REC	3/31/2015	No Turbidity data. Violates Board Order No. R6V-2003-0028 MRP I.B.3.a-h.	null	Discharger did not propose or identify any corrective actions taken.	null	San Bernardino
3	Brissenden, John	Sorensen's Resort	988015	Reporting -> Late Report	WDRMUNIOTH	1/16/2015	Report was submitted late	null	null	null	Alpine
3	Caillier, Karen	Roadhouse Restaurant	990175	Reporting -> Late Report	WDRMUNIENTROTH	1/31/2015	Submitted monthly SMR 29 days late. Violates Board Order No. 97-10 DWQ MRP II.B.1.	Monthly SMR was due 02/15/2015 and received 03/16/2015.	Discharger did not propose or identify any corrective actions taken.	null	San Bernardino
3	Centennial Ranches	Centennial Ranches	990691	Reporting -> Deficient Reporting	ANIWSTGRZ	3/16/2015	2015 Annual Report missing scheule and cost estimates	null	null	null	Mono
3	Eastern Sierra CSD	Eastern Sierra CSD WWTF	985592	Reporting -> Deficient Reporting	WDRMUNILRG	1/9/2015	No WDID information. Violates Board Order No. 6-94-024 MRP II.A General Provisions 3.e.iii.	null	Discharger did not propose or identify any corrective actions taken.	Oral Communication	Inyo
3	Furnace Creek Inn & Ranch	Furn Crk Inn & Ranch Pack STP	988159	Reporting -> Late Report	WDRMUNILRG	2/2/2015	SMR submitted 18 days late. Violates Board Order No. R6V-95-068 MRP II.C.	SMR due 01/15/2015 and received 02/02/2015.	Discharger did not propose or identify any corrective actions taken.	null	Inyo
3	Gansberg, Chris Jr	Gansberg Ranch for Grazing	990651	Reporting -> Late Report	ANIWSTGRZ	3/16/2015	Report received 43 days late	null	null	null	Mono
3	Honey Lake Power Co	Honey Lake Power Plant	990281	Reporting -> Late Report	WDRNONMUNIPRCS	1/15/2015	Submitted quarterly SMR 18 days late. Violates Board Order No. 6-88-136 MRP, section III	Quarterly SMR was due on Jan 15, 2015 and was received on Feb 2, 2015	null	Staff Enforcement Letter	Lassen

**Quarterly Violations Report
January 1, 2015 - March 31, 2015**

Priority	Agency	Facility	Violation ID	Violation Type	Violation Program	Date Occured	Violation Description	Comments	Corrective Action	Enforcement Action	County
3	Leavitt Lake CSD	Leavitt Lake Sewage Treatment Ponds	989252	Water Quality -> Effluent -> CAT1	WDRMUNIOTH	2/27/2015	Total Suspended Solids (TSS) 30-Day Average limit is 30 mg/L and reported value was 32 mg/L.	The Discharger needs to remove accumulated sludge built up in the pond, which has had difficulty meeting effluent limits. The violation was self reported.	None - the dishcharge will remove accumulated sludge and put pond back into service.	null	Lassen
3	Tahoe Keys POA	Tahoe Keys Water Treatment Facility	987866	Reporting -> Late Report	REC	2/1/2015	Report received 25 days late for 401 Cert.	null	null	null	El Dorado
3	Vallor Equity Partners	Mountain High West Package Plant	987968	Reporting -> Late Report	WDRMUNIOTH	1/31/2015	Submitted monthly SMR 19 days late. Violates Board Order No. R6V-85-114 MRP II.	Monthly SMR was due on 02/15/2015 and received on 03/06/2015.	Discharger did not propose or identify any corrective actions taken.	null	Los Angeles