

APPENDIX A

TRAWL LOCATION MAPS

This page left intentionally blank

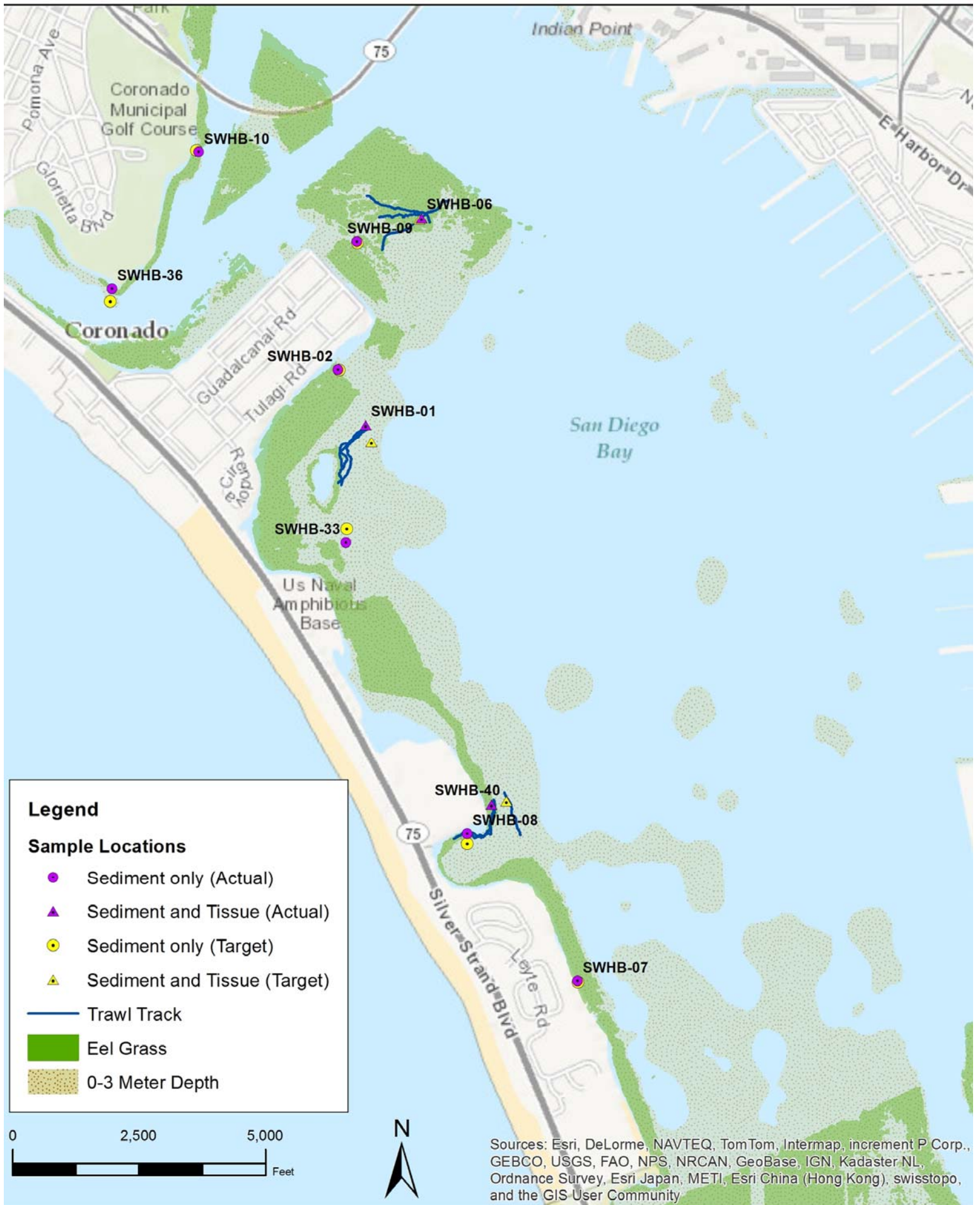
Shallow Water Habitat
Bioaccumulation Survey
San Diego Bay
(SWHB)

April-May, 2014

This page left intentionally blank



DeLorme, NAVTEQ, TomTom, Intermap, increment P Corp., S, FAO, NPS, NRCAN, GeoBase, IGN, Kadaster NL, Vevey, Esri Japan, METI, Esri China (Hong Kong), swisstopo, Aerius, etc.





This page left intentionally blank

Regional Harbor Monitoring Program (RHMP)

Aug.-Sept. 2013

This page left intentionally blank

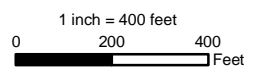


Legend

- Bight '13 ID Trawl 1
- Additional Trawl for Tissue - Trawl 2

Path: R:\2013\Aquatics\POSD\MXD\ReportFigures\RHMP\report_figs\trawls_report_DanaPt.mxd, jessie.lee 2/20/2014
 Aerial Source: Esri, i-cubed, USDA, USGS, AEX, GeoEye, Getmapping, Aerogrid, IGN, IGP, and the GIS User Community

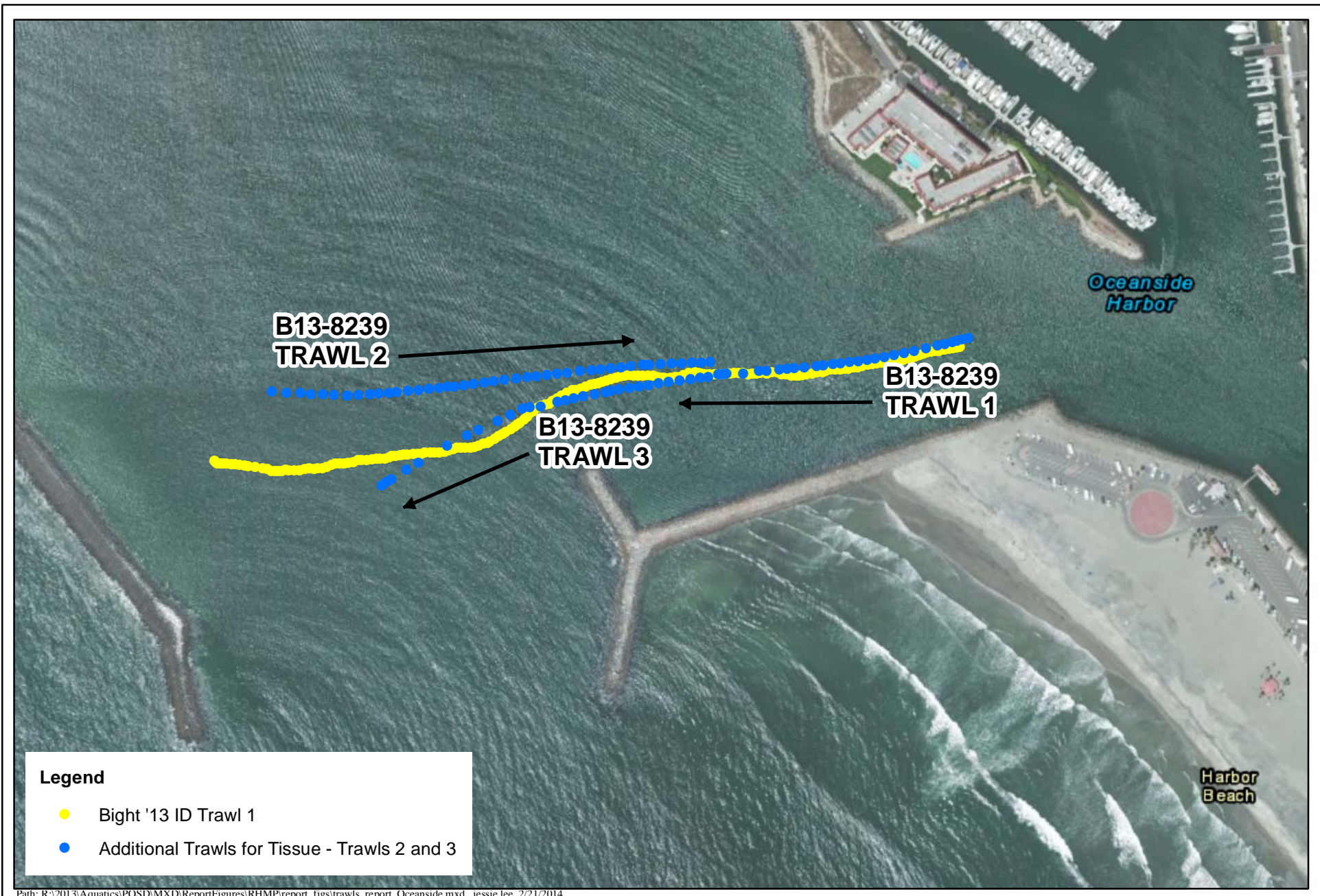
**Dana Point Harbor
 RHMP - Bight '13
 Actual Trawl Locations**



FIGURE

2





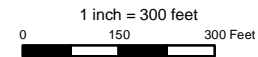
Legend

- Bight '13 ID Trawl 1
- Additional Trawls for Tissue - Trawls 2 and 3

Path: R:\2013\Aquatics\POSD\MXD\ReportFigures\RHMP\report_figs\trawls_report_Oceanside.mxd, jessie.lee 2/21/2014

Aerial Source: Esri, i-cubed, USDA, USGS, AEX, GeoEye, Getmapping, Aerogrid, IGN, IGP, and the GIS User Community

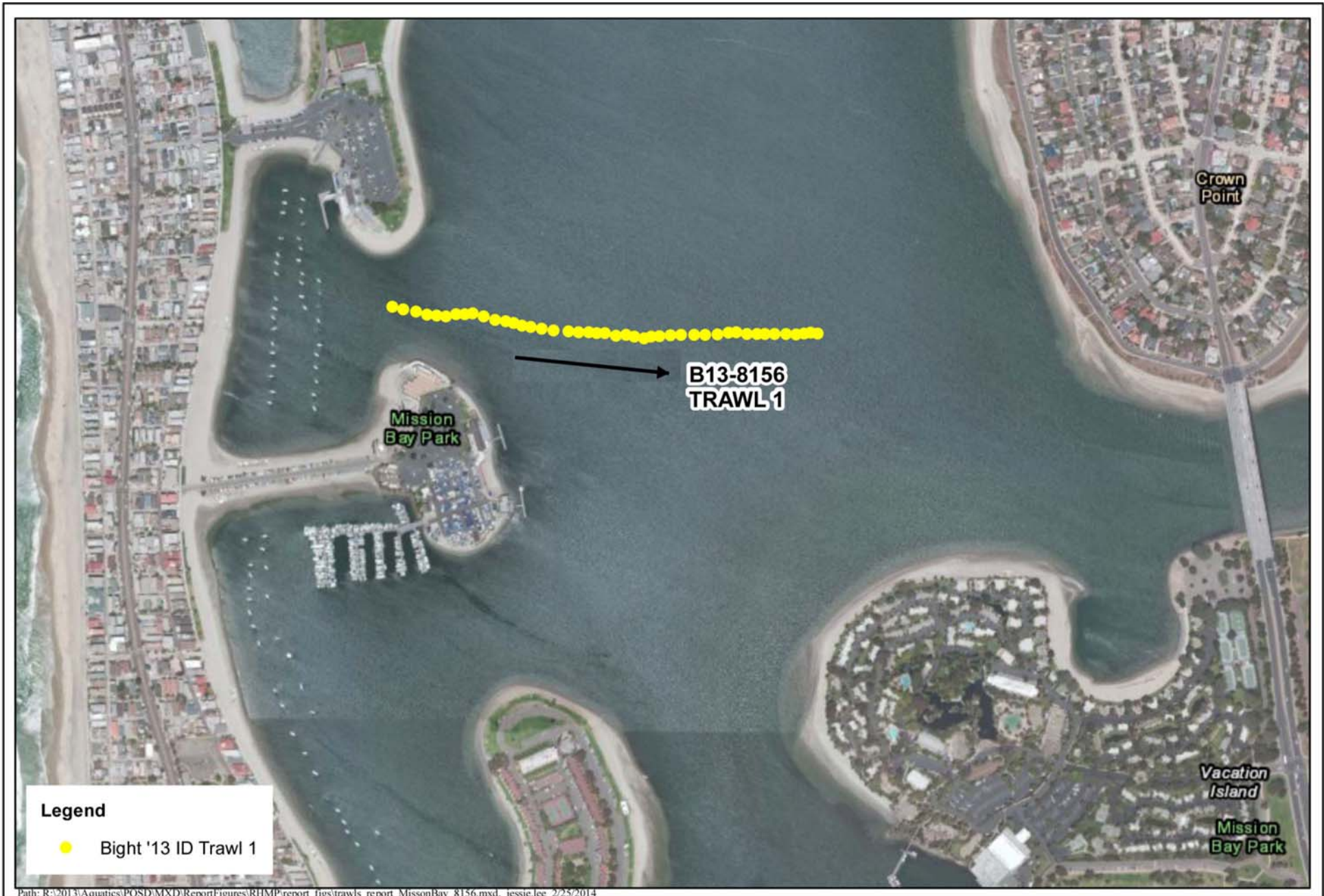
**Oceanside Harbor
RHMP - Bight '13
Actual Trawl Locations**



FIGURE

2





Path: R:\2013\Aquatics\POSD\MXD\Report\Figures\RHMP\report figs\trawls report MissionBay 8156.mxd, jessie.lee 2/25/2014

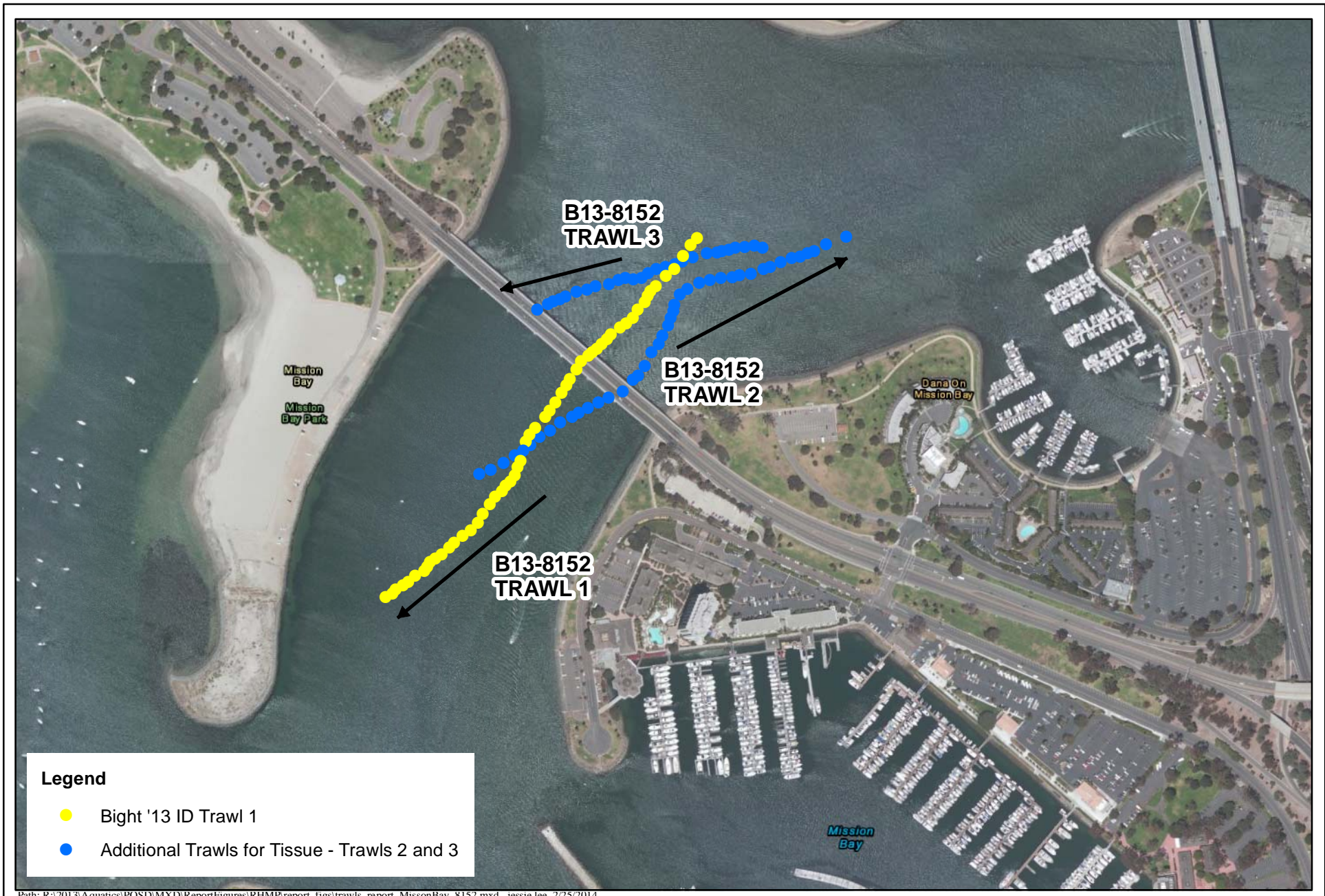
Aerial Source: Esri, i-cubed, USDA, USGS, AEX, GeoEye, Getmapping, Aerogrid, IGN, IGP, and the GIS User Community

**Mission Bay - West
RHMP - Bight '13
Actual Trawl Locations**

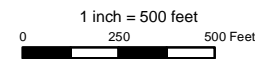
FIGURE

2



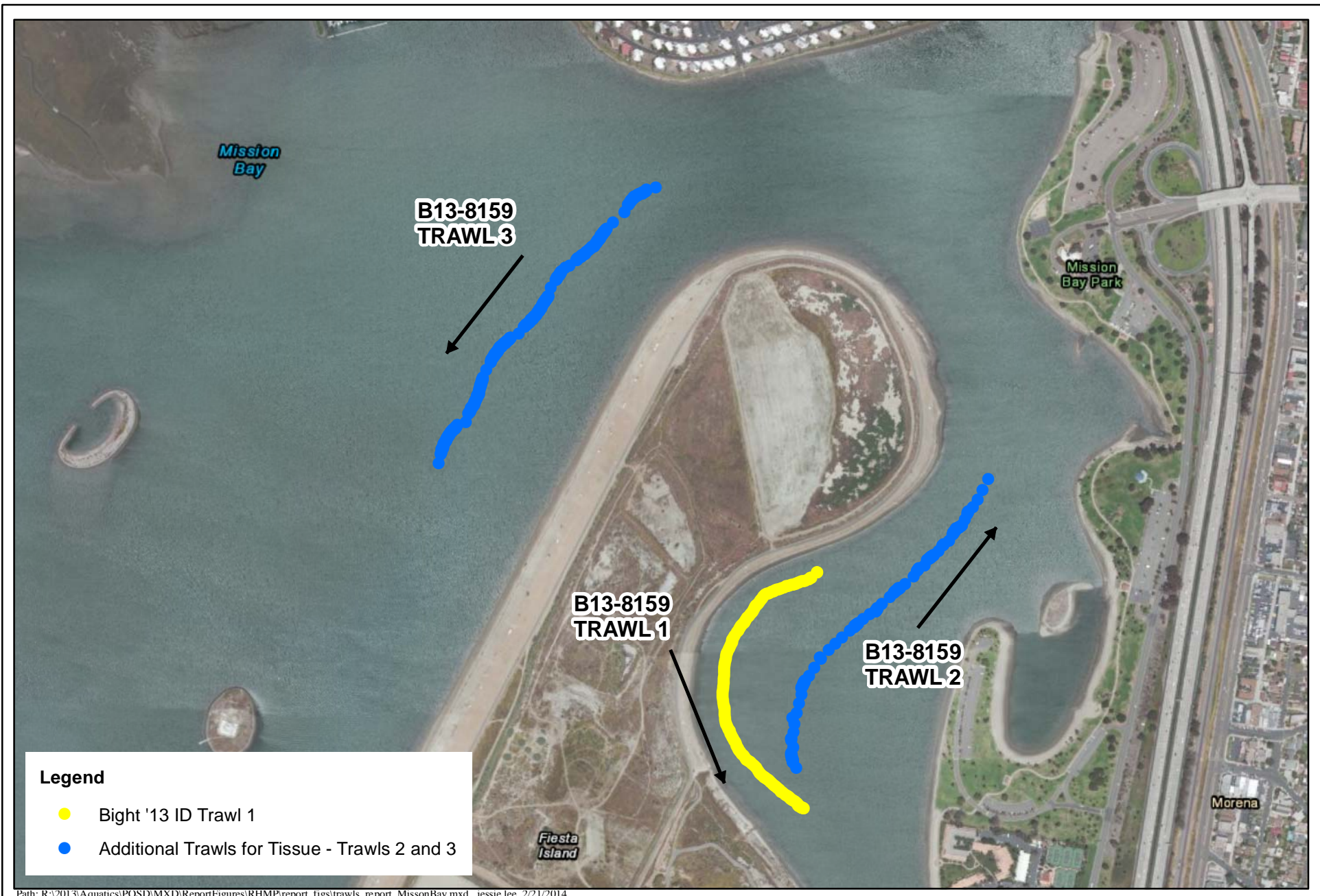


**Mission Bay - South
RHMP - Bight '13
Actual Trawl Locations**



FIGURE

2



Path: R:\2013\Aquatics\POSD\MXD\ReportFigures\RHMP\report_figs\trawls_report_MissionBay.mxd, jessie.lee 2/21/2014

Aerial Source: Esri, i-cubed, USDA, USGS, AEX, GeoEye, Getmapping, Aerogrid, IGN, IGP, and the GIS User Community

**Mission Bay - East
RHMP - Bight '13
Actual Trawl Locations**

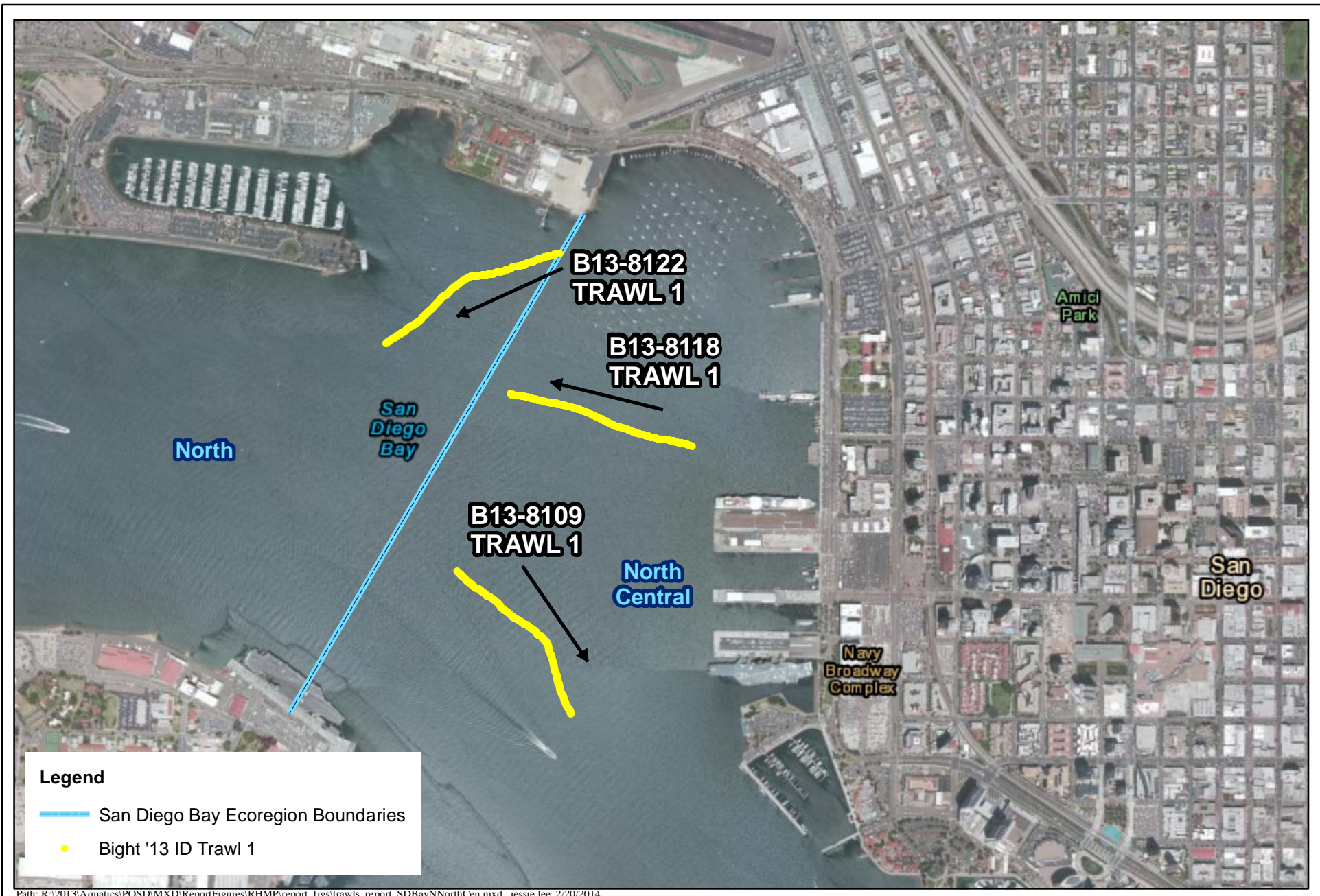
1 inch = 750 feet
0 375 750 Feet



FIGURE

2





Legend

- San Diego Bay Ecoregion Boundaries
- Bight '13 ID Trawl 1

Path: R:\2013\Aquatics\POSD\MXD\ReportFigures\RHMP\report_figs\trawls_report_SDBay\NorthCen.mxd, jessie.lee 2/20/2014

Aerial Source: Esri, i-cubed, USDA, USGS, AEX, GeoEye, Getmapping, Aerogrid, IGN, IGP, and the GIS User Community

**San Diego Bay - North/North Central
RHMP - Bight '13
Actual Trawl Locations**

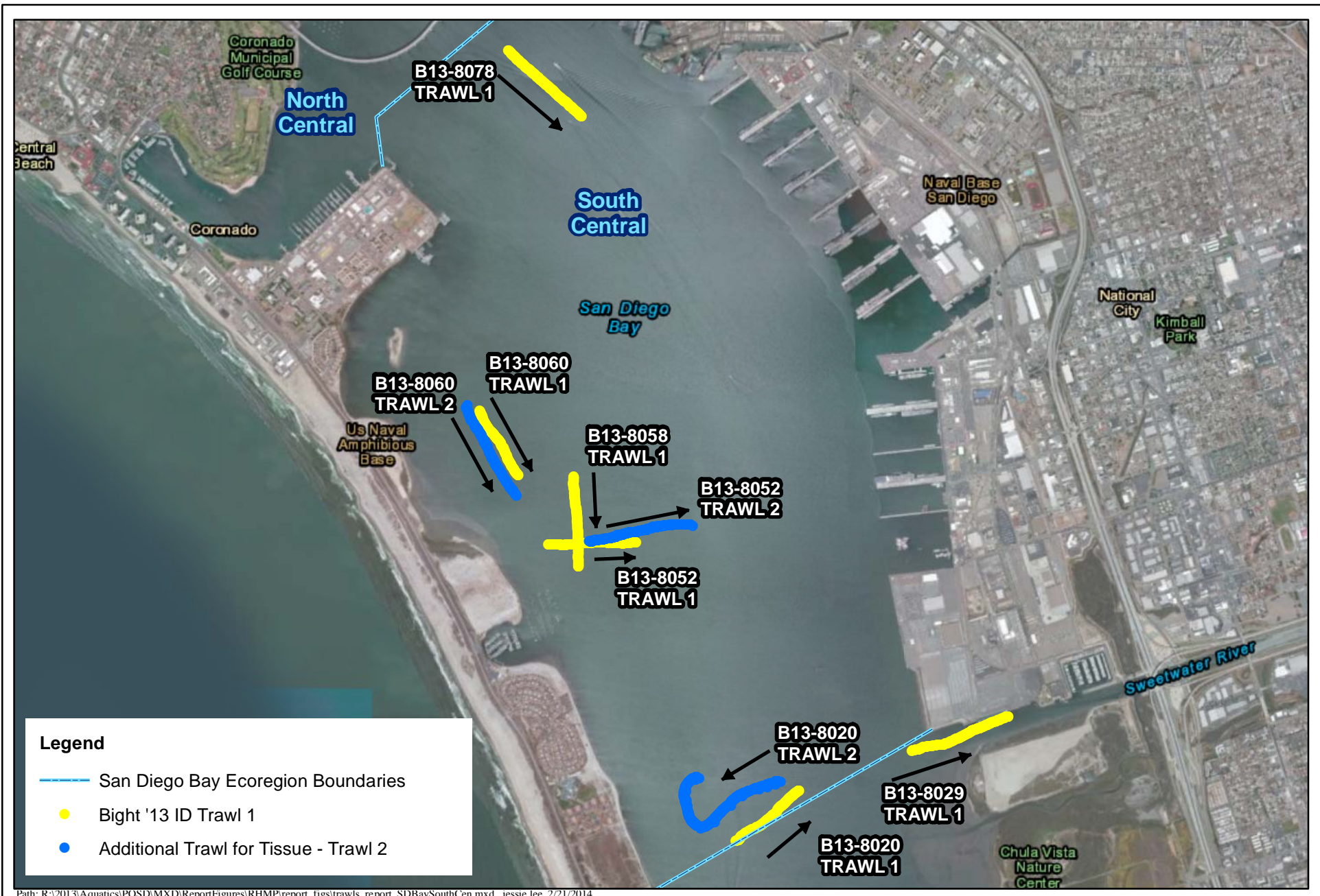
1 inch = 1,300 feet
0 650 1,300 Feet



FIGURE

2





Path: R:\2013\Aquatics\POSD\MXD\ReportFigures\RHMP\report_fig\trawls_report_SDBaySouthCen.mxd, jessie.lee 2/21/2014

Aerial Source: Esri, i-cubed, USDA, USGS, AEX, GeoEye, Getmapping, Aerogrid, IGN, IGP, and the GIS User Community

San Diego Bay - South Central
RHMP - Bight '13
Actual Trawl Locations

1 inch = 2,800 feet
0 1,400 2,800 Feet



FIGURE

2





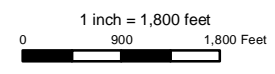
Legend

- San Diego Bay Ecoregion Boundaries
- Bight '13 ID Trawl 1
- Additional Trawl for Tissue - Trawl 2

Path: R:\2013\Aquatics\POSD\MXD\ReportFigures\RHMP\report_figs\trawls_report_SDBaySouth.mxd, jessie.lee 2/21/2014

Aerial Source: Esri, i-cubed, USDA, USGS, AEX, GeoEye, Getmapping, Aerogrid, IGN, IGP, and the GIS User Community

**San Diego Bay - South
RHMP - Bight '13
Actual Trawl Locations**



FIGURE

2

