

# California's Surface Water Ambient Monitoring Program

“SWAMP” Update -  
2005



# What if...

- What if, monitoring programs could pursue their own goals and also integrate information from other sources to support their needs?



# What if...

- What if, data and information from many sources could be aggregated to improve coverage across jurisdictions?

# What if...

- What if we could design programs and use monitoring information collaboratively to better understand how to protect and manage our waters and watersheds?



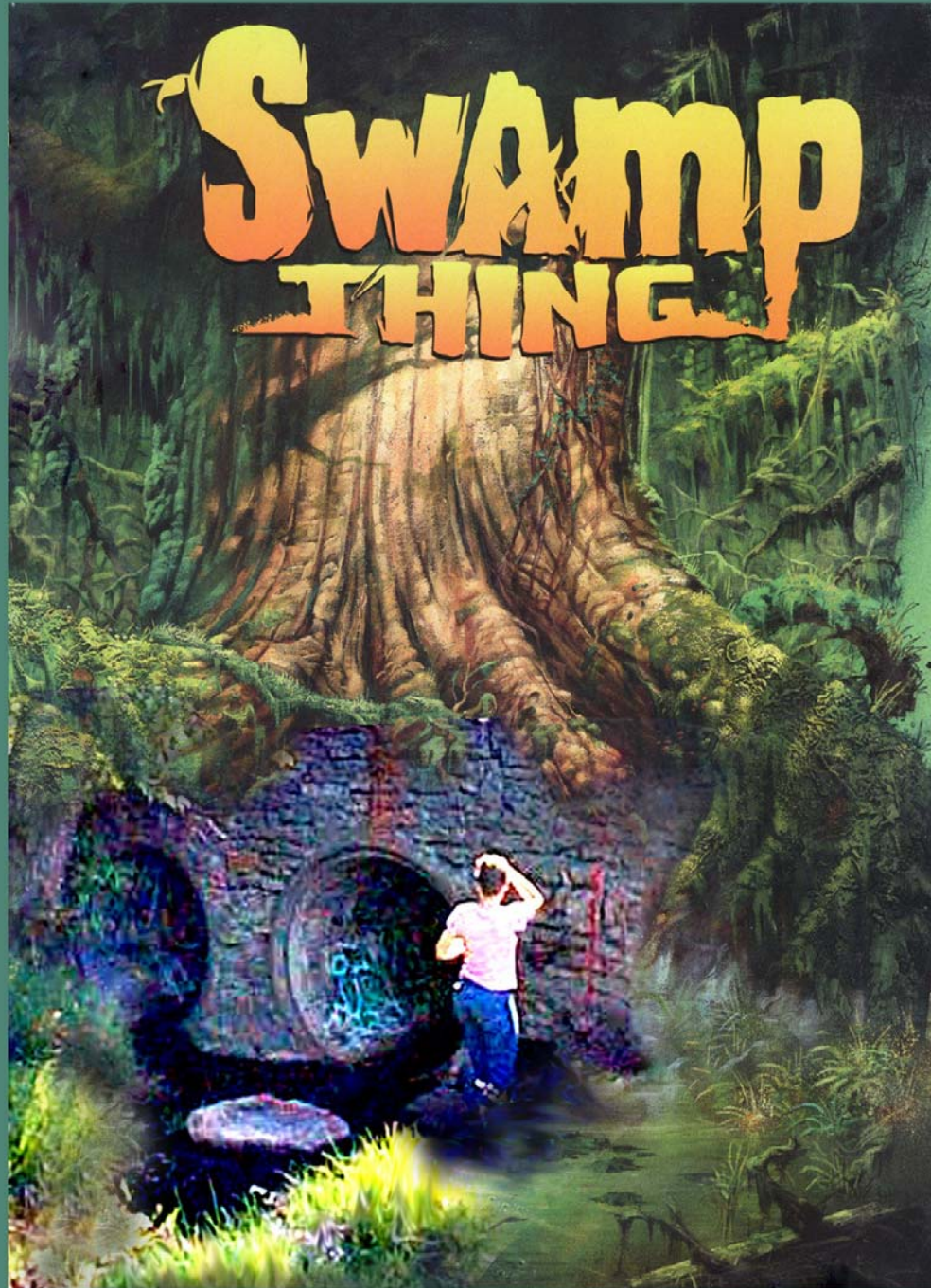
# What if...

- What if this integration, aggregation, and collaboration enabled us to achieve a better return on public and private investments?

- These “what ifs” can only be realized if we all strive for comparability.
- How?



# SWAMP THING



# SWAMP: Required by AB 982 (WC sec.13191)

- Comprehensive state program (surface water)
- Coordinate all Board ambient water quality monitoring Programs/projects
- High Quality Data
- Comparable data
- Accessible



- SWAMP is a state framework to coordinate consistent and scientifically defensible methods and strategies for improving water quality monitoring, assessment, and reporting.
- It will be coordinated with products of the NWQMC and “borrows” liberally from other successful programs.

# The Challenge: CA

- 190 hydrologic units (655 hydrologic sub-areas)
- 211,000+ miles rivers and streams
- Over 10,000 lakes (1.6+ million acres)
- Over 1,300,000+ acres of bays and estuaries
- 1,609 miles of coastline



# The Regulatory Challenge:

- CWA section 305(b) report
- CWA section 303(d) list, TMDLs
- Porter Cologne, Basin Plans
- Implementation, 319h
- CWA section 106(e)

# SWAMP November 2000

- Proposed a cost efficient monitoring program to meet all CWA needs for all water types and pollutant sources
- Requested
  - \$59 to \$115 million (\$3,400,000)
  - 87 to 132 PYs (17 PYs)
  - WDPF surcharge



# 2003-04 Reality Check

- Existing goals don't match the fiscal reality or current program
- Need realistic short-term objectives (priorities)
- Need longer-term implementation strategy
- Need to pursue collaborative alternatives to data generation

# Implementation Strategy

- Monitoring Program Strategy
- Monitoring Objectives
- Monitoring Design
- Core Indicators of Water Quality
- Quality Assurance
- Data Management
- Data Analysis/Assessment (CALM)
- Reporting
- Programmatic Evaluation
- General Support and Infrastructure



# Building “Infrastructure”

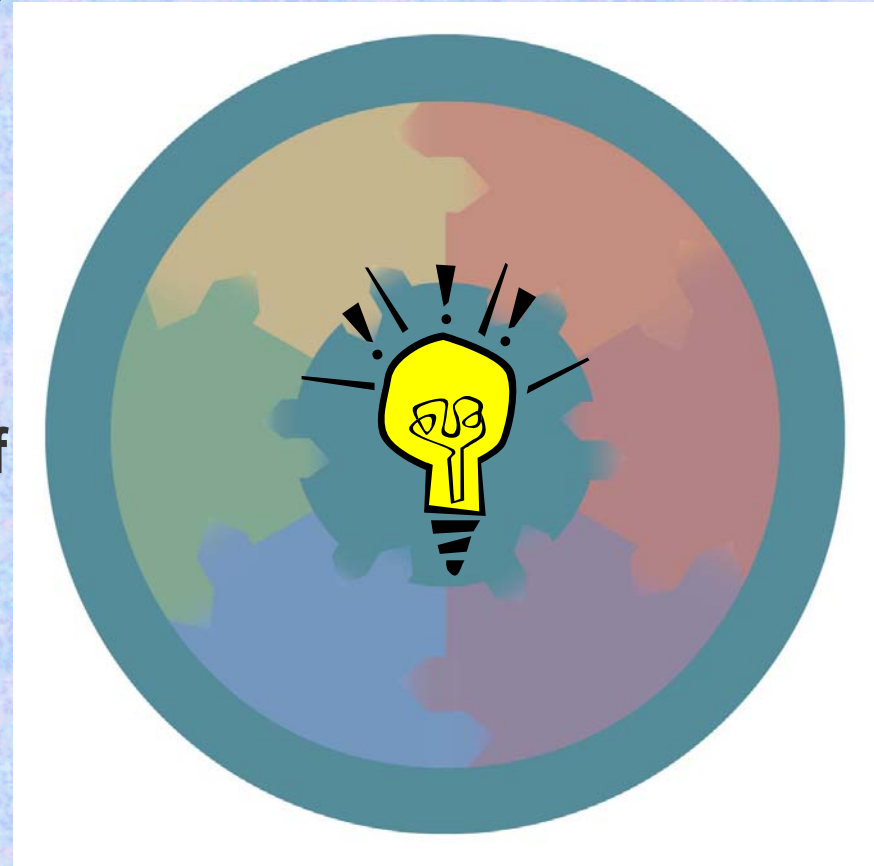
(Or, what to do in a budget crisis)

- Monitoring Framework
- Information Exchange Network
- Quality Assurance Program
- Tool Box and Training
- Nested Monitoring Design

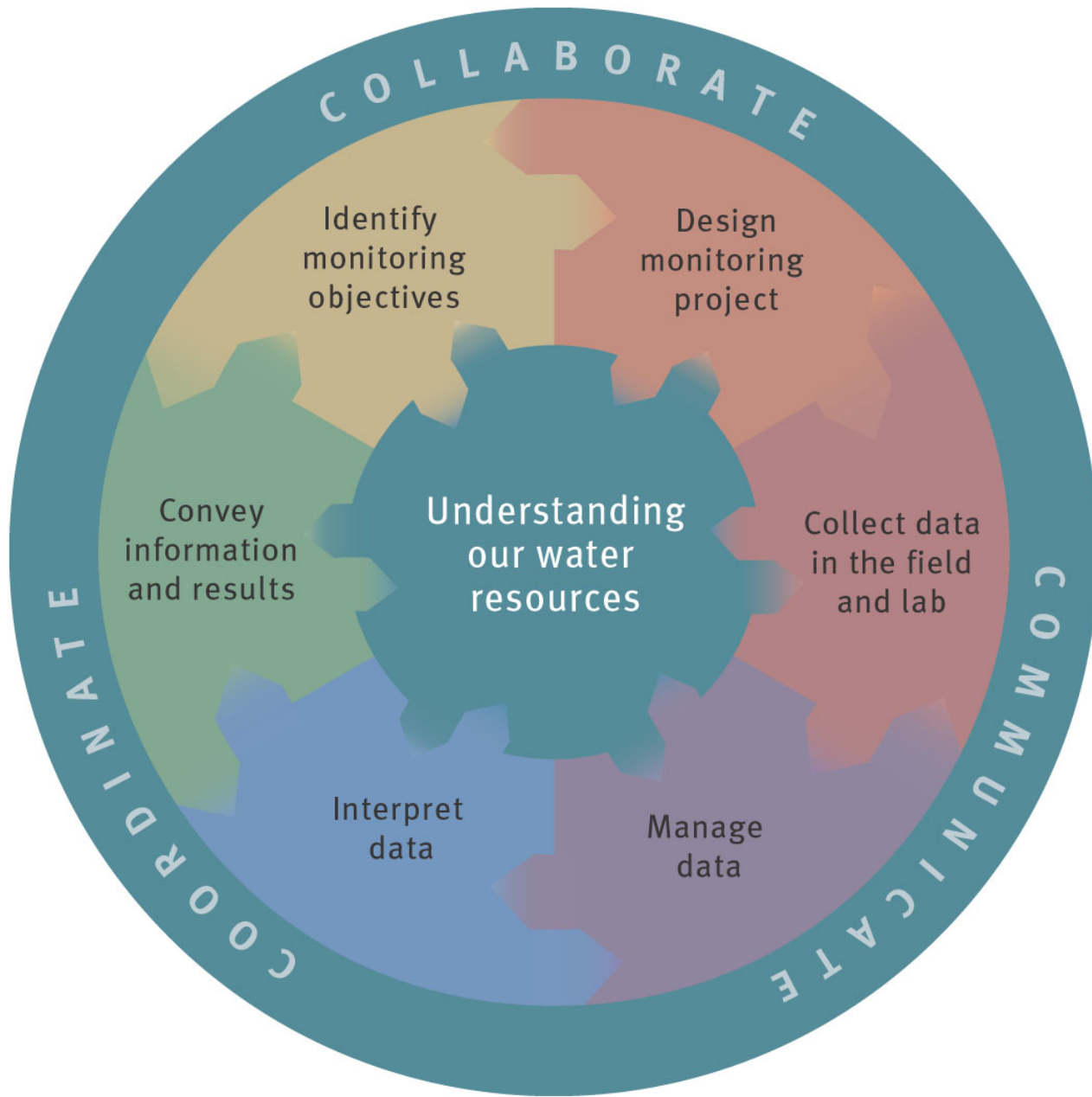
# What's a Monitoring Framework?

- The process of monitoring and assessment should principally be seen as a *sequence of related activities* that
  - **start with the definition of information needs and**
  - **end with the use of the information product.**

*UN/ECE Task Force on Monitoring and Assessment (2000)*







# Building “Infrastructure”

(Or, what to do in a budget crisis)

- Monitoring Framework
- Information Exchange Network
- Quality Assurance Program
- Tool Box and Training
- Nested Monitoring Design



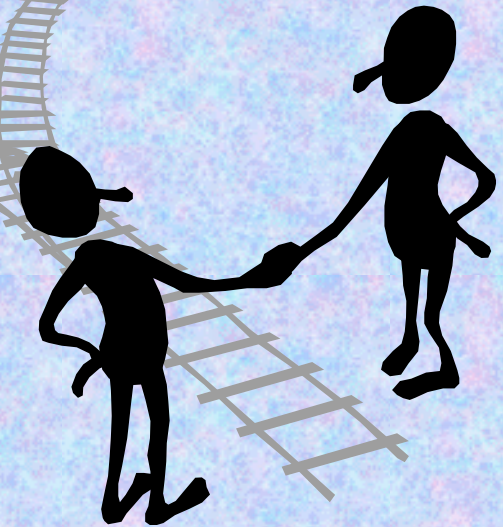
# Why Focus on Collaboration & Comparability?

- Critical differences in project design, methods, data analysis, and data management make it difficult for monitoring information to be shared by more potential data users.



# Collaboration and Comparability

- Development of a national and state monitoring strategy requires that we create a framework for *collaboration* and *comparability* among programs





# Method Comparability

- Consistent and objective sampling, analysis and assessment methods:
  - Sampling: standard field protocols;
    - Training Module (CD)
  - Analysis: performance based;
  - Assessment: 303(d) Policy

# Data Comparability

- Inclusive of all types of water quality monitoring -
  - **chemical, toxicity and field data**
  - **tissue, bacteria indicators, biological, habitat characteristics**
- Training
  - **On-site**
  - **User's guide**



**FY 02-03**

**Discrete Field Information**

**Chemistry**

**Toxicity**

**Extended Field Information**

**SWAMP**

**Bacteria Indicators**

**FY 03-04**

**Tissue**

**Biological Assessment**

**Habitat Assessment**

# Data Integration & Accessibility

- Integrated data management
- Public Access

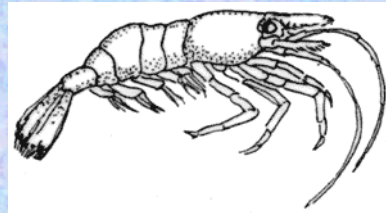


# CA Environmental Data Network (CEDEN) - 50 Entities



**Background/Distributed Data Management System**

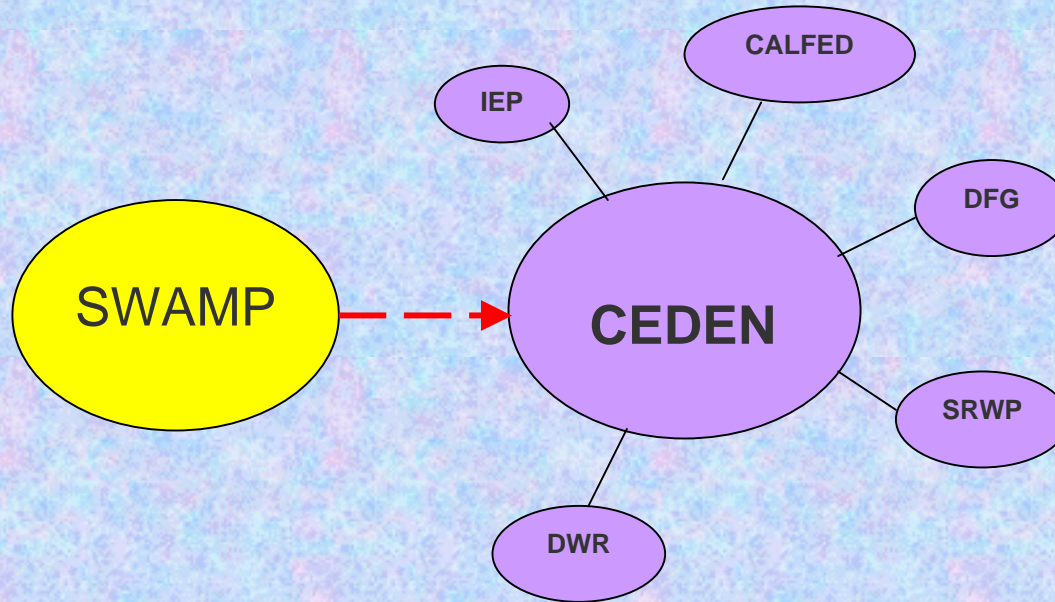
# Data Types



**Background/Distributed Data Management System**

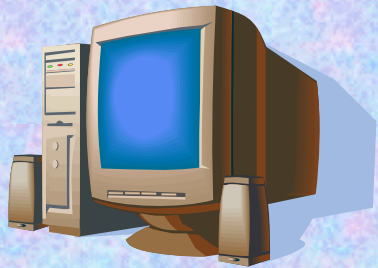
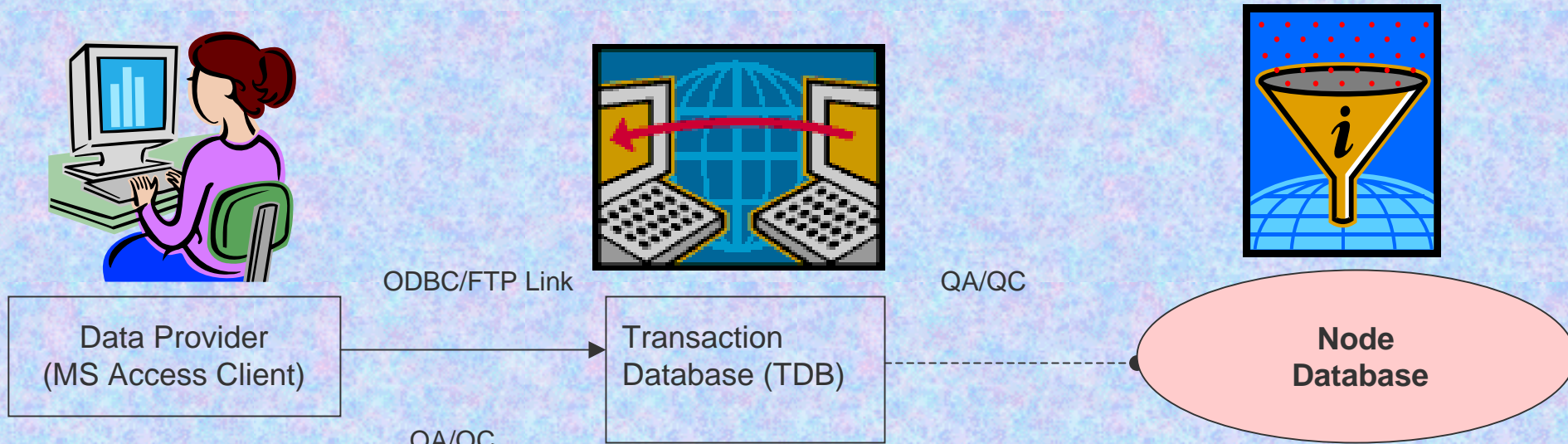


# Database Integration



**SWAMP = Surface Water Ambient Monitoring Program**  
**BDAT = Bay-Delta and Tributaries Database**  
**IEP = Interagency Ecological Program**  
**DFG = Department of Fish & Game**  
**SRWP = Sacramento River Watershed Program**  
**DWR = Department of Water Resources**  
**CALFED = State and Federal Interagency Group**

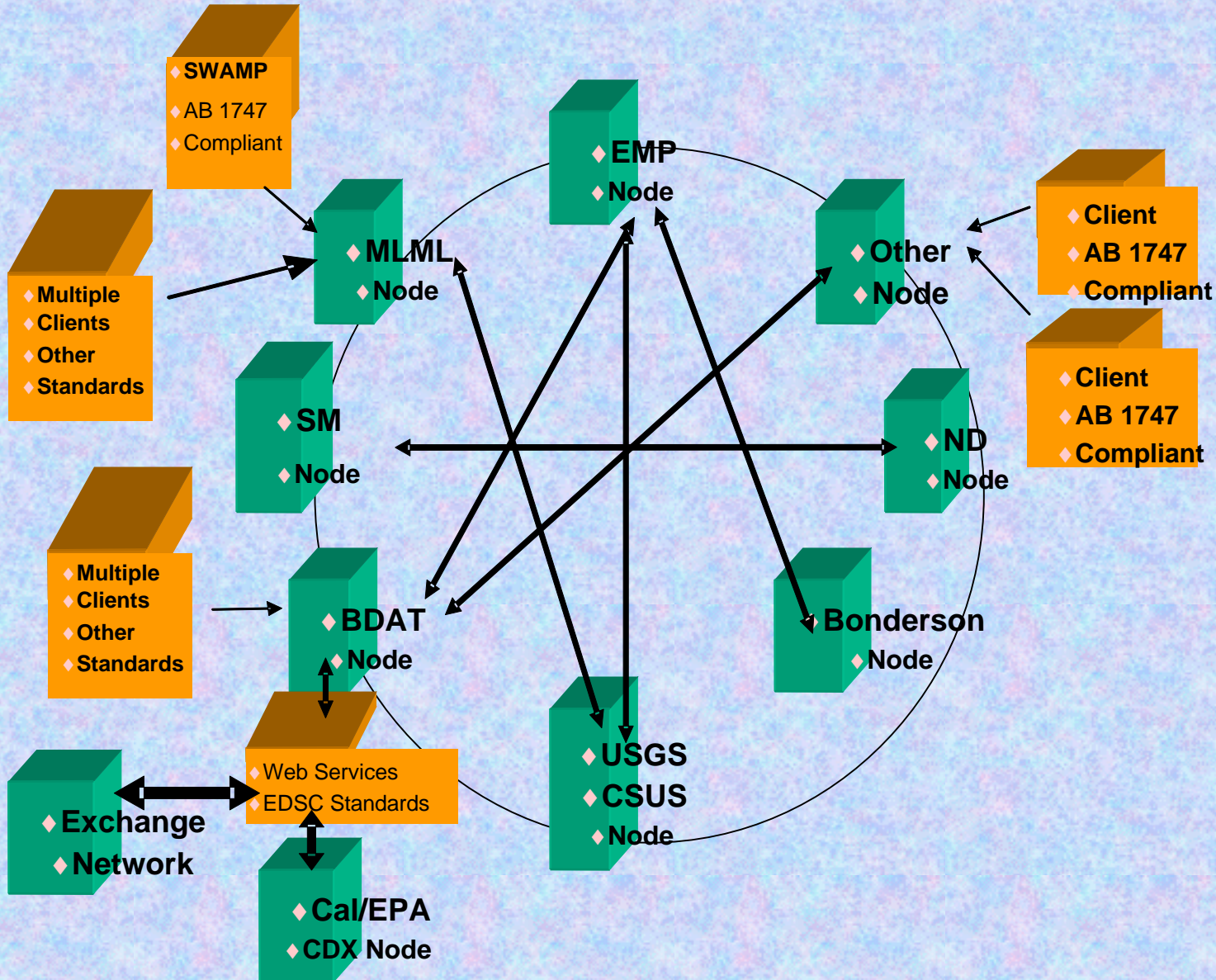
# Cooperative Data Management System



**Local Client Databases**

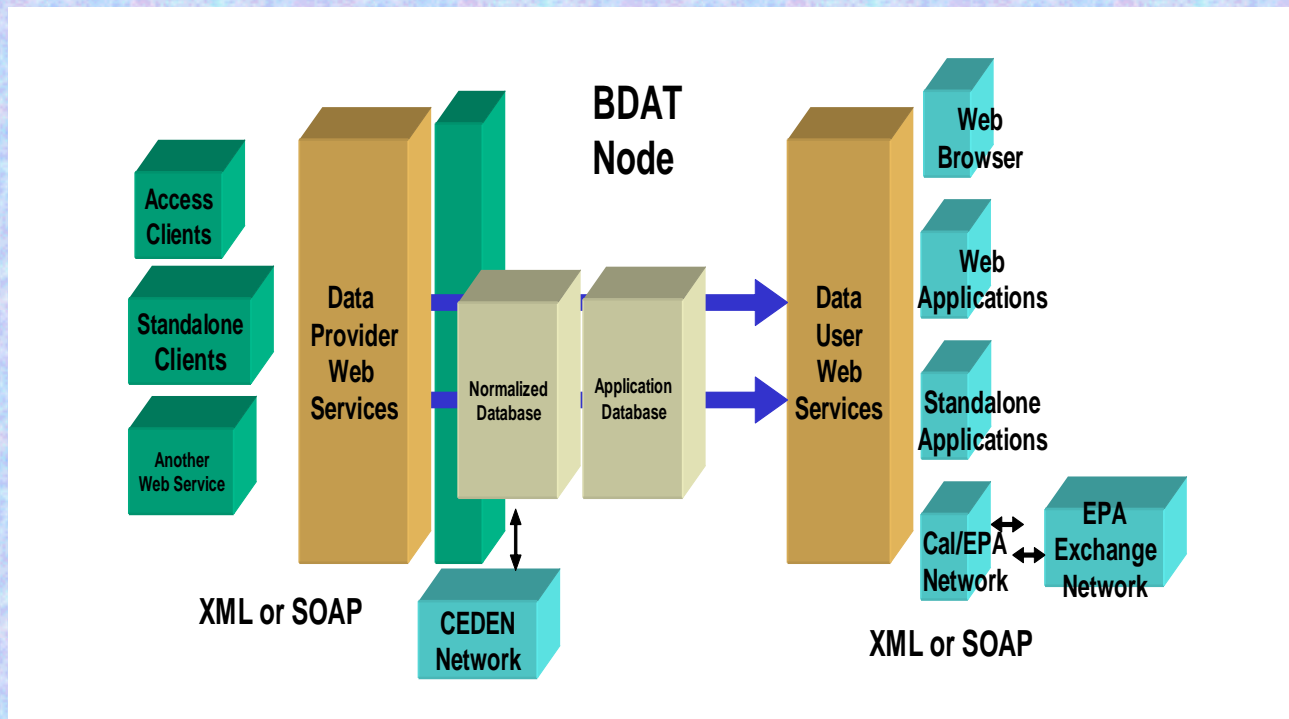


# Cooperative Data Management System



C  
E  
D  
E  
N

# Cooperative Data Management System



Enterprise Applications



# Cooperative Data Management System

DBI:Map:field Measurements - Microsoft Internet Explorer provided by DWR - DES

File Edit View Favorites Tools Help

Back Forward Stop Home Search Favorites Media Print TV

Address [http://sarabande.water.ca.gov:8000/~bdt/db/ingsvr/field\\_dwr\\_new\\_L1.html](http://sarabande.water.ca.gov:8000/~bdt/db/ingsvr/field_dwr_new_L1.html) Go Links

### Field Measurements Results

Query parameters: Type the first few letters of the word:

Project	
Station	Oxygen-Dissolved
Matrix	Oxygen-Saturation-Dissolved
Method	Salinity-
Analyte	Secchi-
SampleDate	Specific Conductance-
	Turbidity-
	Water Temperature-
	Weather Observations-
	Wind Direction-
	Wind Velocity-


Select every Analyte...  Clear every Analyte...  Select all data...

Keyword

Selection | **Advanced**

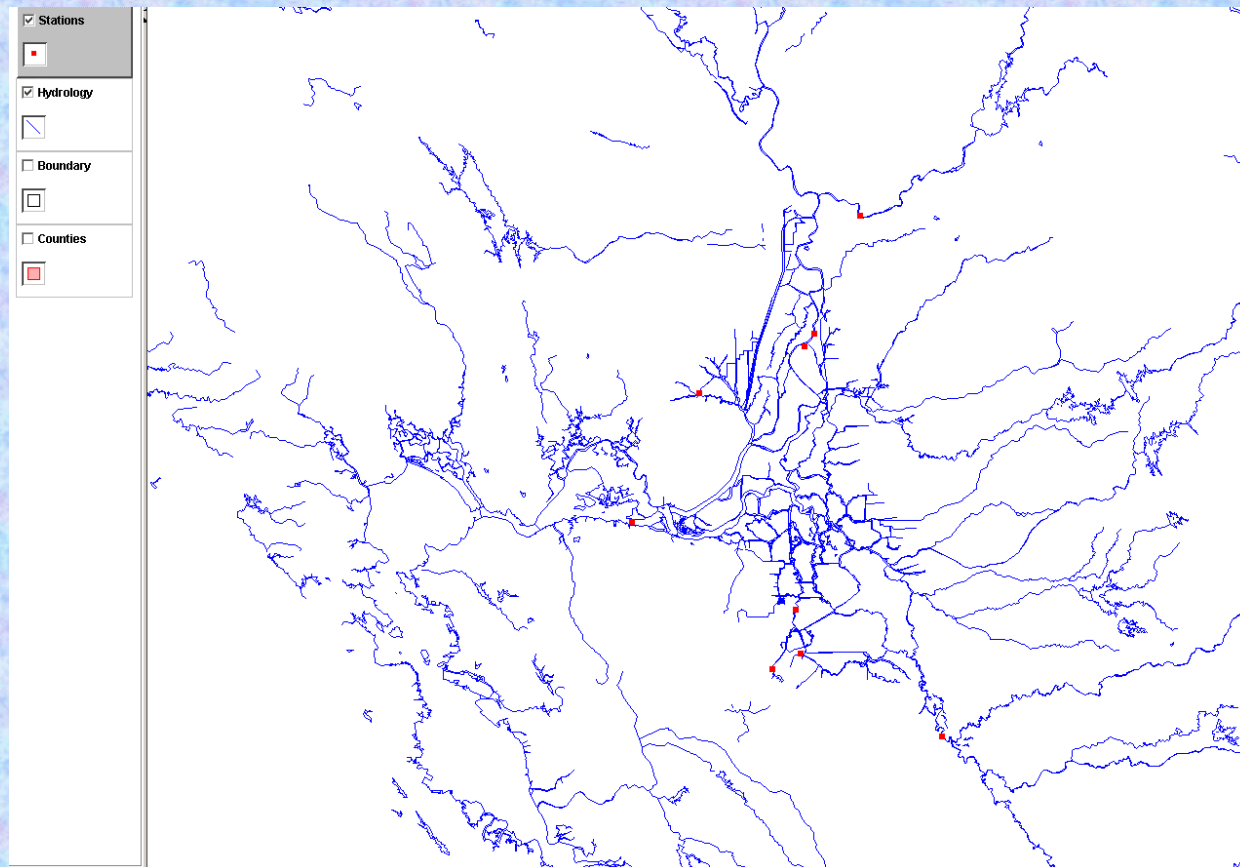
Criteria	
Project:	Select All
Station:	Select All
Matrix:	Select All
Method:	Select All
Analyte:	Secchi-
	Turbidity-
SampleDate:	Between 1961-10-18 and 2200-01-12

Format:

Use SHIFT-mouse click to select range. Use CTRL-mouse click to select multiple items. 0% 

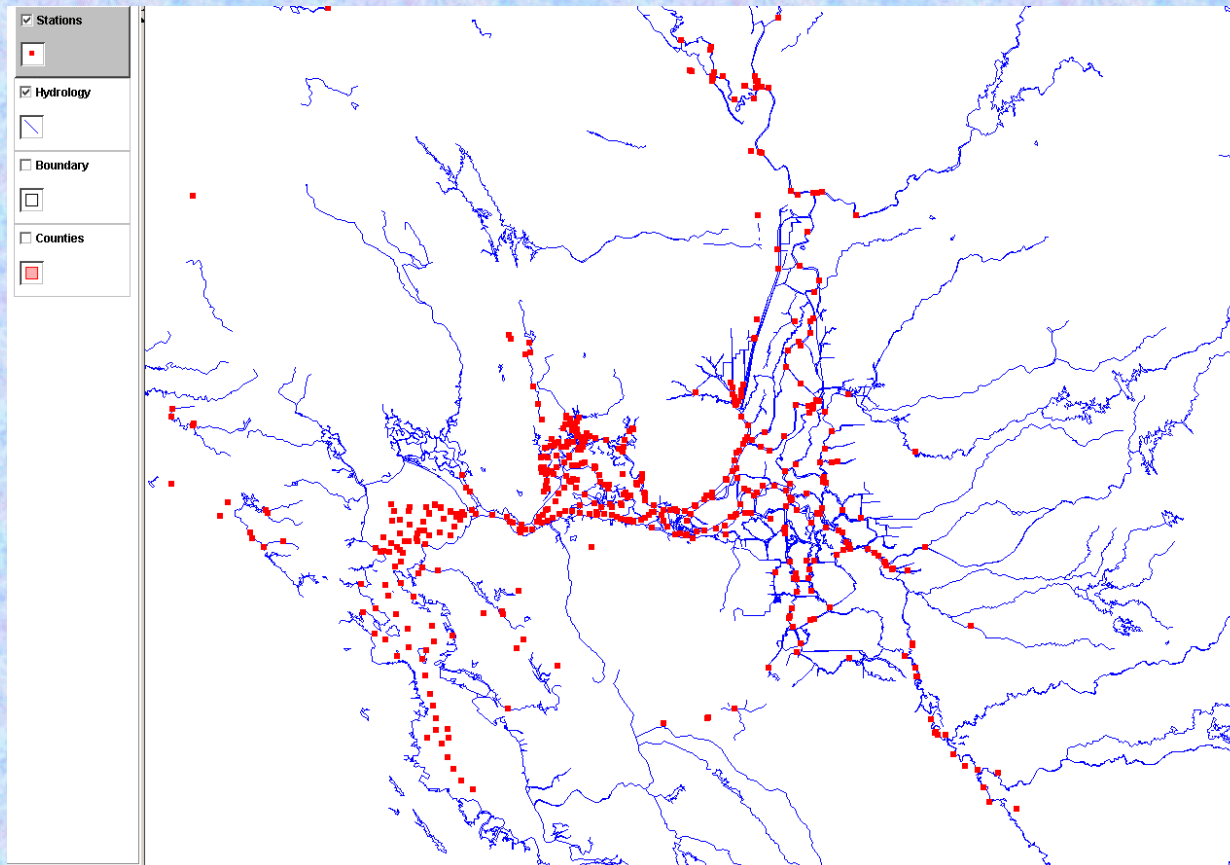
[ [Main](#) | [Help](#) ]

# Cooperative Data Management System





# Cooperative Data Management System



# Building “Infrastructure”

(Or, what to do in a budget crisis)

- Monitoring Framework
- Information Exchange Network
- Quality Assurance Program
- Tool Box and Training
- Nested Monitoring Design



# QA strategy

- QA team
- Consistent data quality assurance:
  - Statewide QMP, 1st Ed.
- QA Tool Box:
  - Training Courses
  - Template, Models, “Boilerplate”
  - Expert System

# QA Expert System (Dec. 2005)

- SWAMP Advisor
- Produce a “SWAMP Compatible” QAPP
- Lead users through complex decision making--provides expert advice
- User learns why info. is needed
- User learns how to implement



# Benefits

- Quick
- Consistent
- Excellent Data Quality
- Easy QAPP approval
- Teaching Tool

# QAPP Implementation

- Protocols
- Audits (lab, field, regions)
- Intercomparison Exercises
- Performance Evaluation Studies
- QMP revision
- Data Verification/Validation
- Toolbox



# Building “Infrastructure”

(Or, what to do in a budget crisis)

- Monitoring Framework
- Information Exchange Network
- Quality Assurance Program
- Tool Box and Training
- Nested Monitoring Design

# SWAMP Training Tract

-All SWAMP “partners”

-Use of SWAMP “toolbox”

- **Introductory Monitoring Design**
- Advanced Monitoring Design
- SWAMP Field Methods (CD rom)
- Introductory Quality Assurance
- **SWAMP Advisor**
- SWAMP Data Management
- SWAMP Collaboration Workshop
- Annual mtg - CA Bioassessment Workgroup
- SWAMP for Ag. Coalitions
- **Monitoring Grant Project Effectiveness**



# Building “Infrastructure”

(Or, what to do in a budget crisis)

- Monitoring Framework
- Information Exchange Network
- Quality Assurance Program
- Tool Box and Training
- Nested Monitoring Design

# SWAMP:

- Required by AB 982 (WC sec.13191)
- Coordinate all Board ambient water quality monitoring Programs/projects
  - Comprehensive state program (surface water)
  - High Quality Data
  - Comparable data
  - Accessible



# Next 24 Months

- **Continue statewide & regional assessments**
- **Formation of (NPS) Monitoring Council**
- **Intra- & Inter-agency Outreach/Education**
- **Continue Training**
- **Reporting (305b, RB assessments)**
- **Public fact sheets**
- **Complete database development**
- **2nd. Edition QMP**
- **2nd SPARC (external peer review)**

# Outstanding Issues - Insufficient Resources

- Increase in SWAMP “partners”
- Consistency/Comparability = Training
- QA Coordination
- Requesting/receiving data
- Resistance to change



# Questions?

Val Connor

Assessment and TMDL Support Unit

Division of Water Quality

State Water Resources Control Board

(916) 341-5573

Vconnor@waterboards.ca.gov

<http://www.waterboards.ca.gov/swamp>