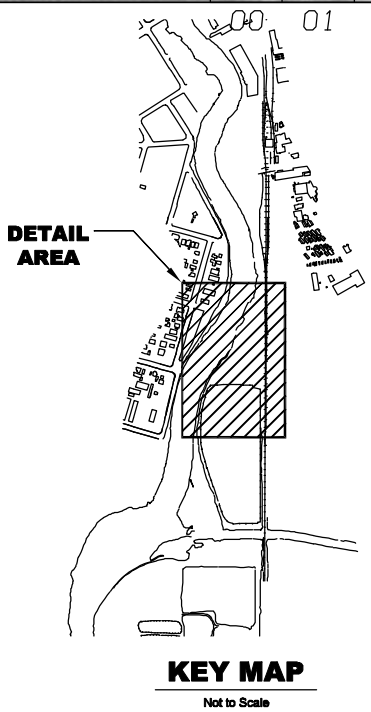


00 01 02 03 04 05 06 07 08 09 10 11 12 13 14 15 16 17 18 19
 D C B A



- Legend:**
- Gasoline, Kerosene, or Flammable Liquid
 - Diesel or Heating Oil
 - Unknown Contents
 - Non-Tank Structures
 - ASTs Above-Ground Storage Tanks
 - UST Underground Storage Tank

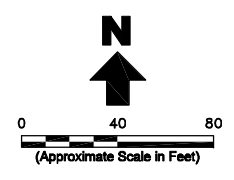
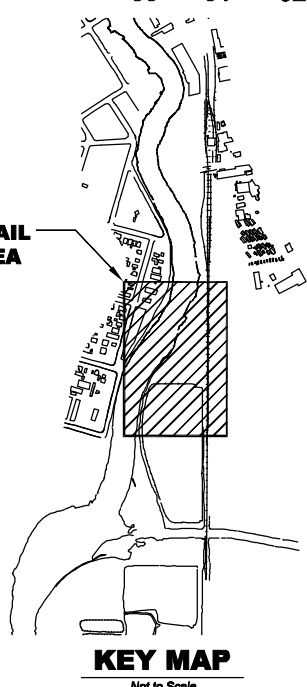
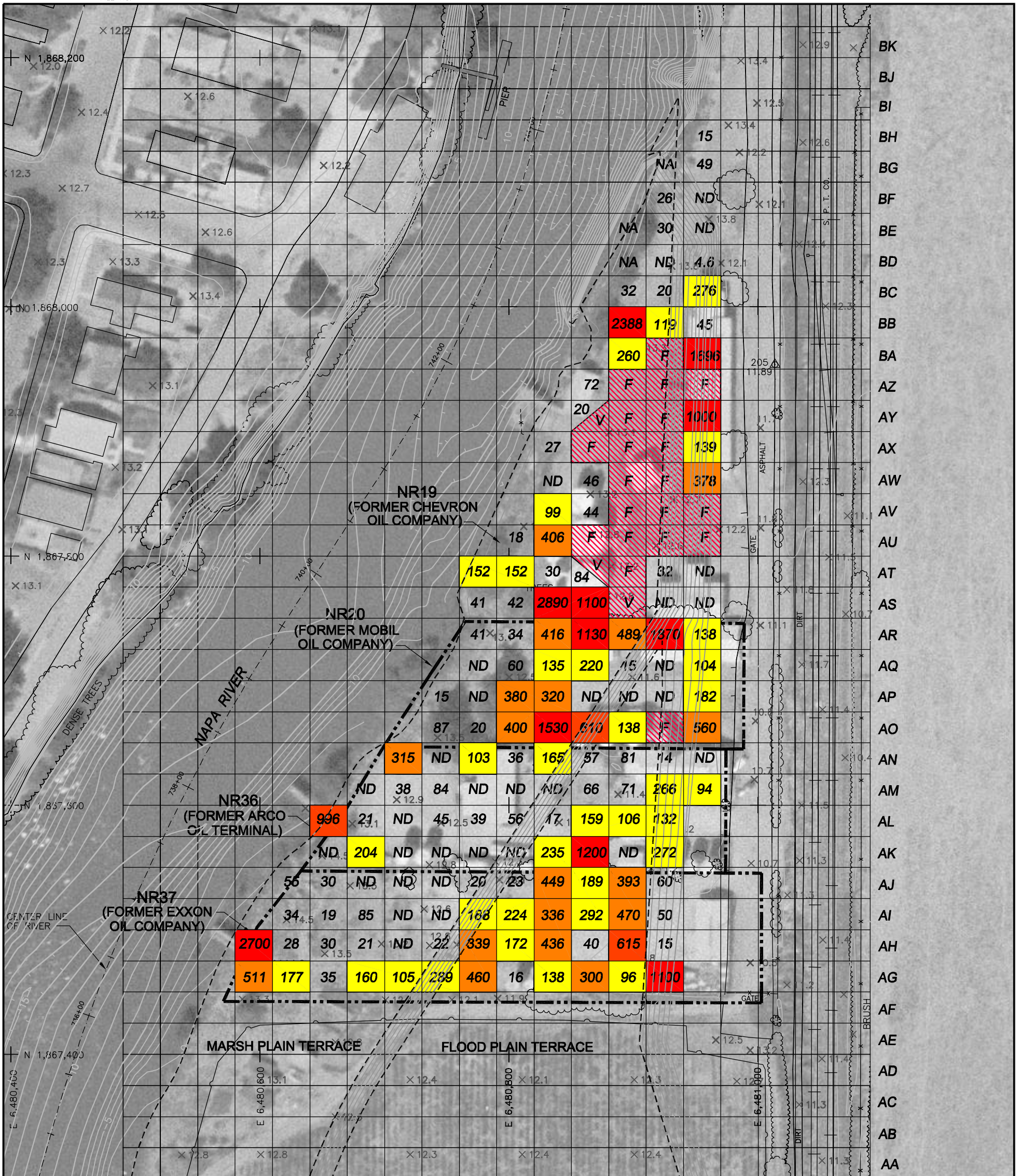


PHOTO DATED AUGUST 22, 1956
 PACIFIC AERIAL SURVEY

FIGURE 3
 FORMER OIL TERMINAL
 STRUCTURES AND CROSS
 SECTION LOCATIONS



Legend

- Soil Field Rejected as Significantly Impacted
No Laboratory Analysis Performed (F)
or Visual Evidence Observed During Excavation (V)
- TPH Concentration >1000 mg/kg
- TPH Concentration 600-999 mg/kg
- TPH Concentration 300-599 mg/kg
- TPH Concentration 93-299 mg/kg
- 210 Total TPH Concentration mg/kg
- ND Not Detected

Note:
Some Samples are Layer 1X,
(Combined Layer 1A and 1B)

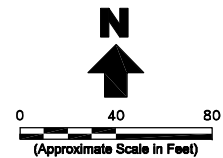
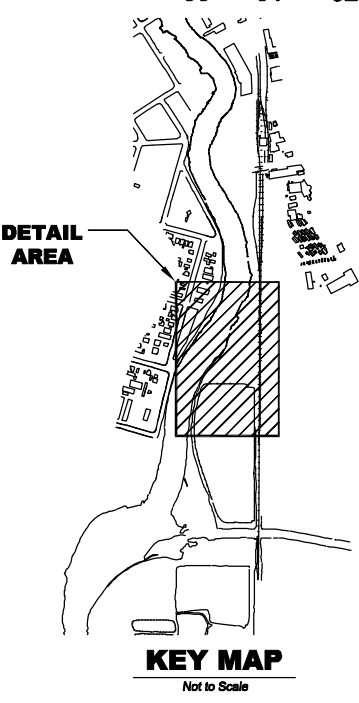
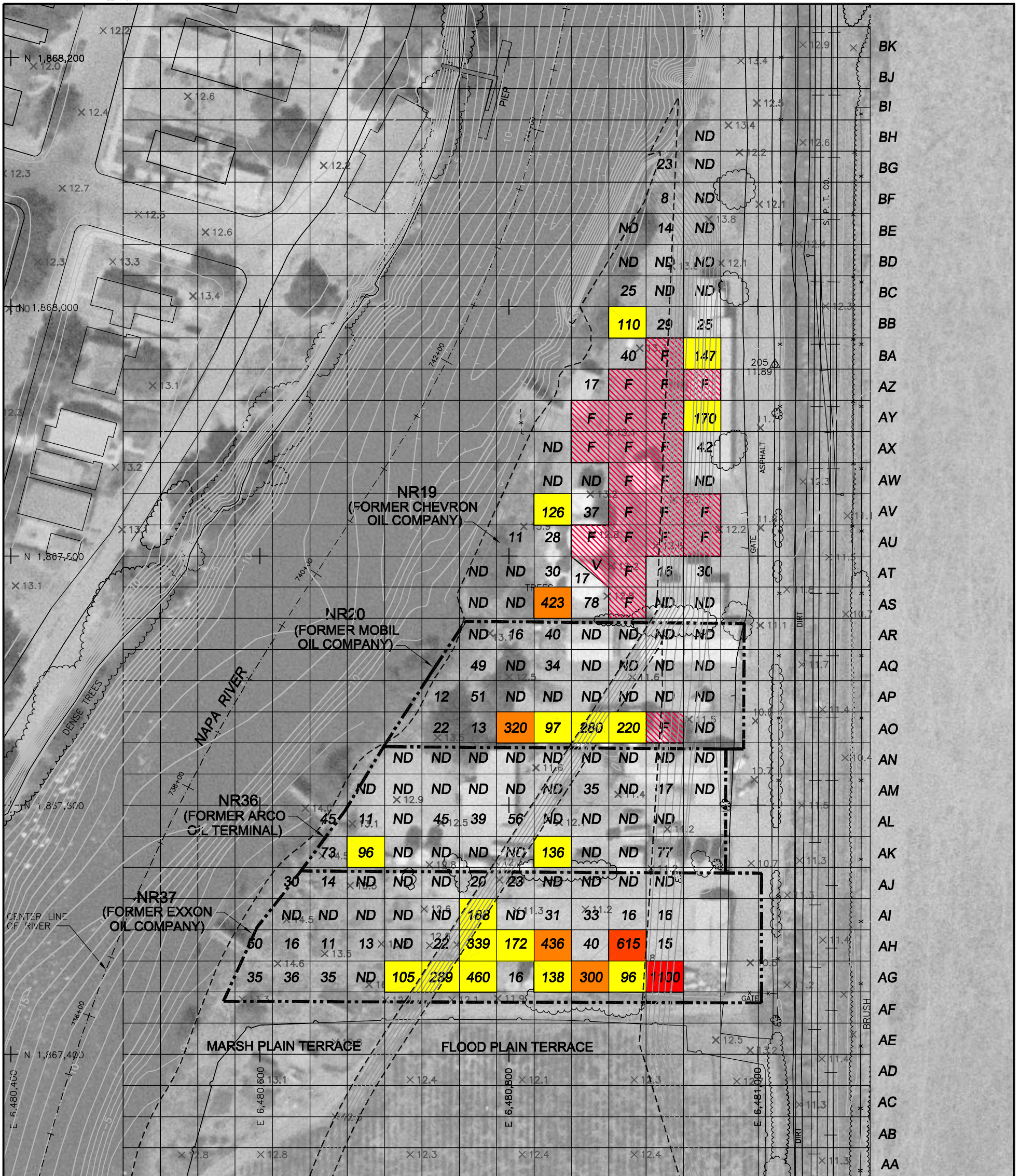


PHOTO DATED AUGUST 22, 1956
PACIFIC AERIAL SURVEY

FIGURE 4
TPH SOIL CHARACTERIZATION
PHASE 1 / LAYER 1A



- Legend**
- Soil Field Rejected as Significantly Impacted
No Laboratory Analysis Performed (F)
or Visual Evidence Observed During Excavation (V)
 - TPH Concentration >1000 mg/kg
 - TPH Concentration 600-999 mg/kg
 - TPH Concentration 300-599 mg/kg
 - TPH Concentration 93-299 mg/kg
 - 210 Total TPH Concentration mg/kg
 - ND Not Detected

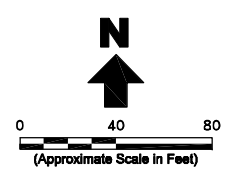
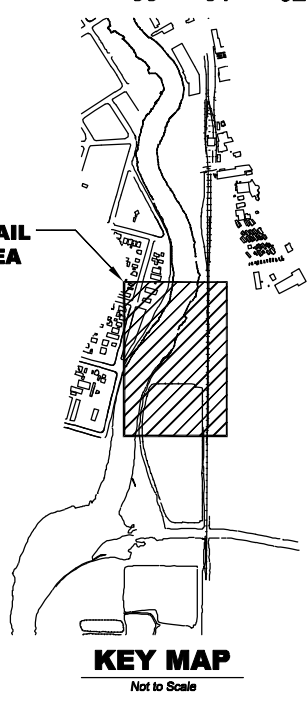
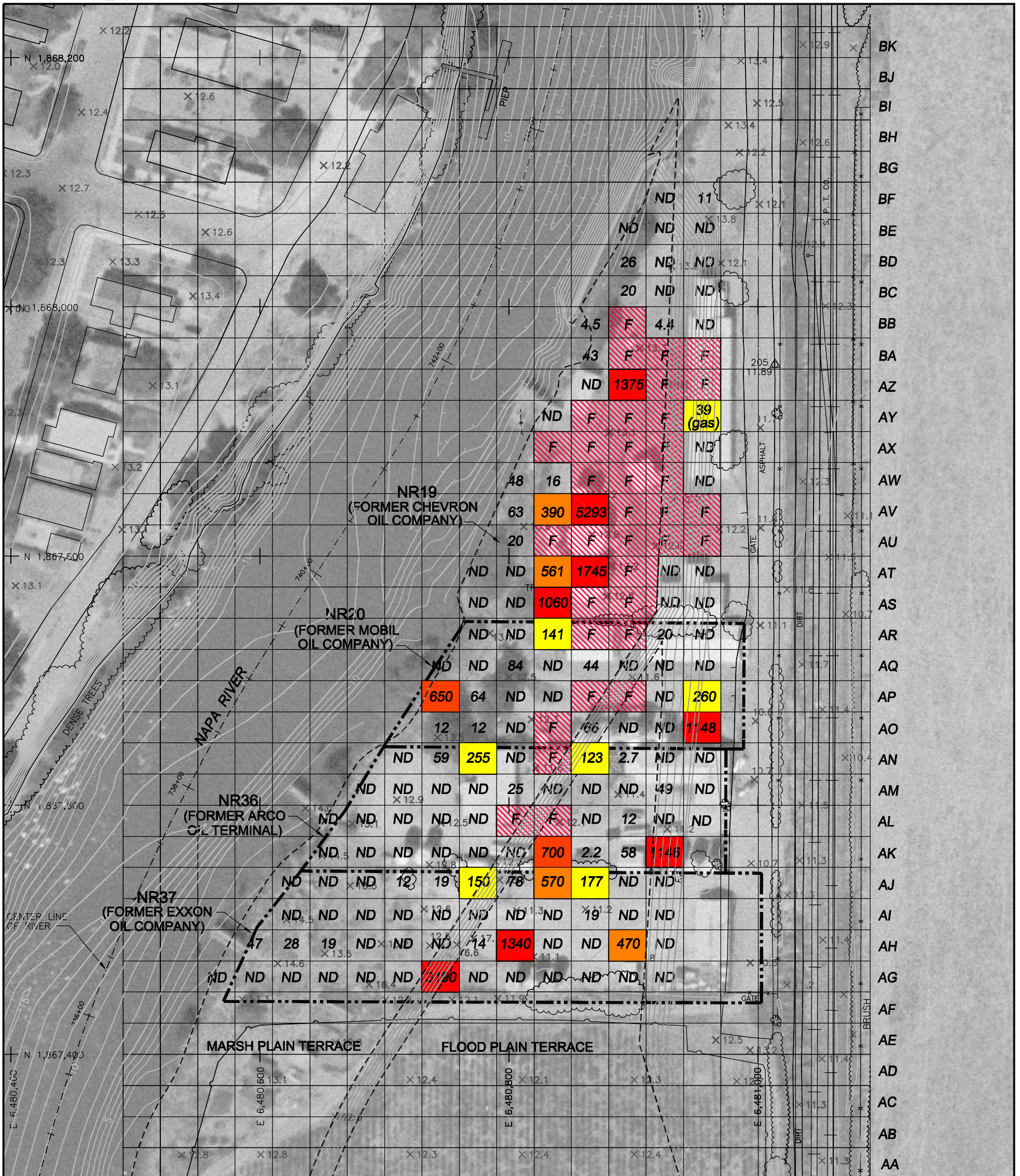


PHOTO DATED AUGUST 22, 1956
PACIFIC AERIAL SURVEY

Note:
Some Samples are Layer 1X,
(Combined Layer 1A and 1B)

FIGURE 5
TPH SOIL CHARACTERIZATION
PHASE 1 / LAYER 1B



Legend

- Soil Field Rejected as Significantly Impacted
No Laboratory Analysis Performed (F)
or Visual Evidence Observed During Excavation (V)
- TPH Concentration >1000 mg/kg
- TPH Concentration 600-999 mg/kg
- TPH Concentration 300-599 mg/kg
- TPH Concentration 93-299 mg/kg
- 210 Total TPH Concentration mg/kg
- ND Not Detected

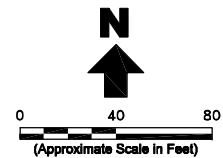
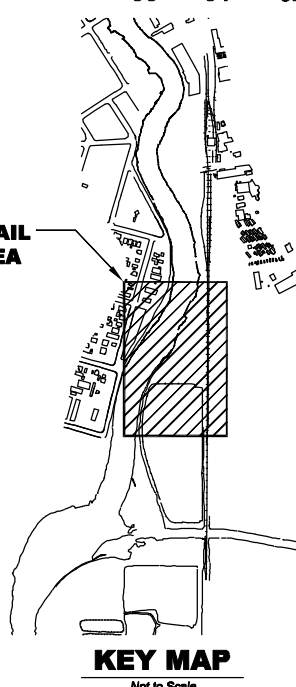
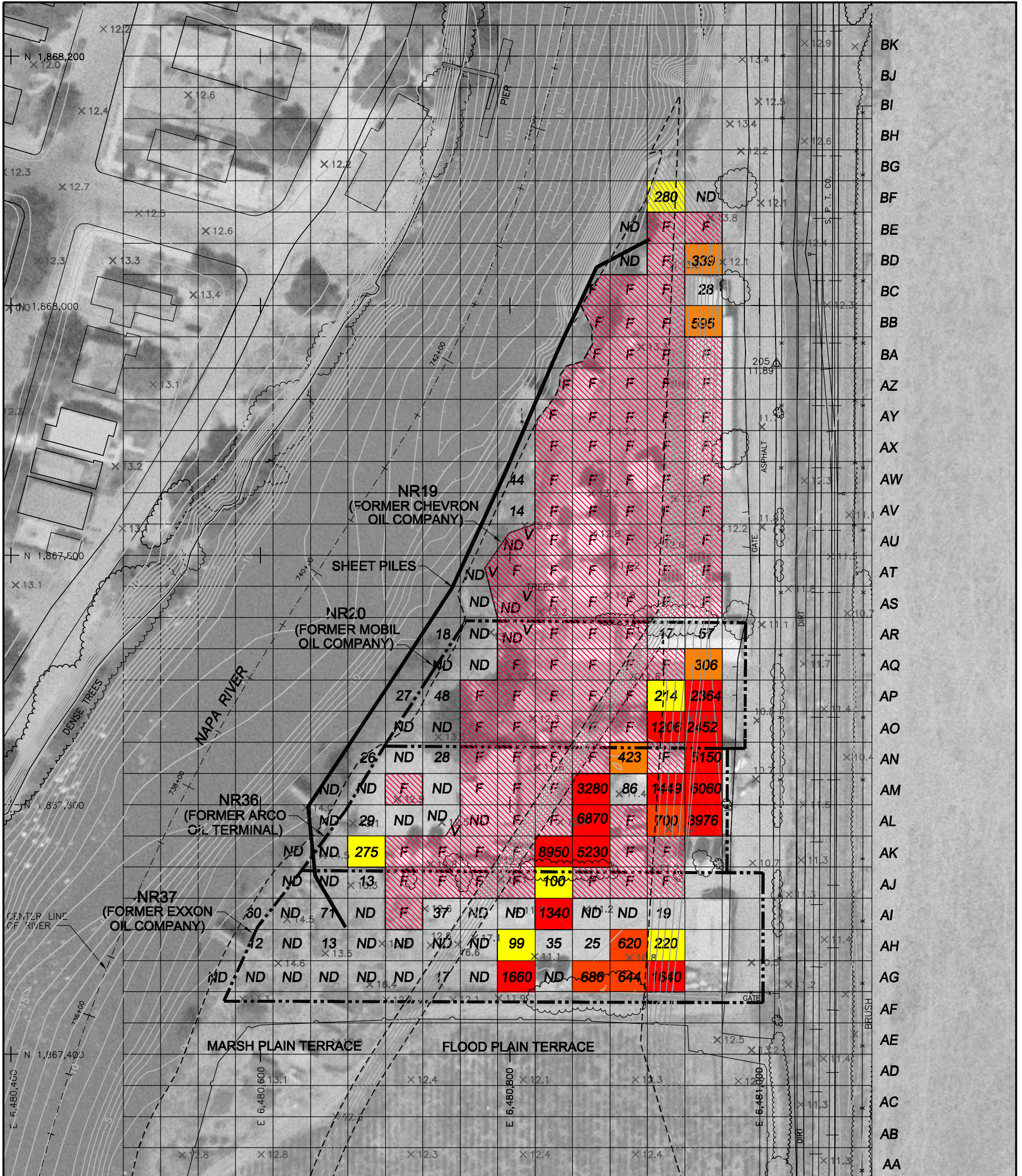


PHOTO DATED AUGUST 22, 1956
PACIFIC AERIAL SURVEY

FIGURE 6
TPH SOIL CHARACTERIZATION
PHASE 1 / LAYER 2A



- Legend**
- Soil Field Rejected as Significantly Impacted
No Laboratory Analysis Performed (F)
or Visual Evidence Observed During Excavation (V)
 - TPH Concentration >1000 mg/kg
 - TPH Concentration 600-999 mg/kg
 - TPH Concentration 300-599 mg/kg
 - TPH Concentration 93-299 mg/kg
 - 210 Total TPH Concentration mg/kg
 - ND Not Detected
 - Extent of Sheet Pile Placement

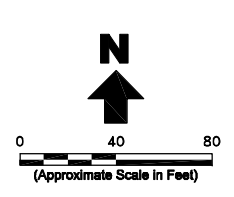
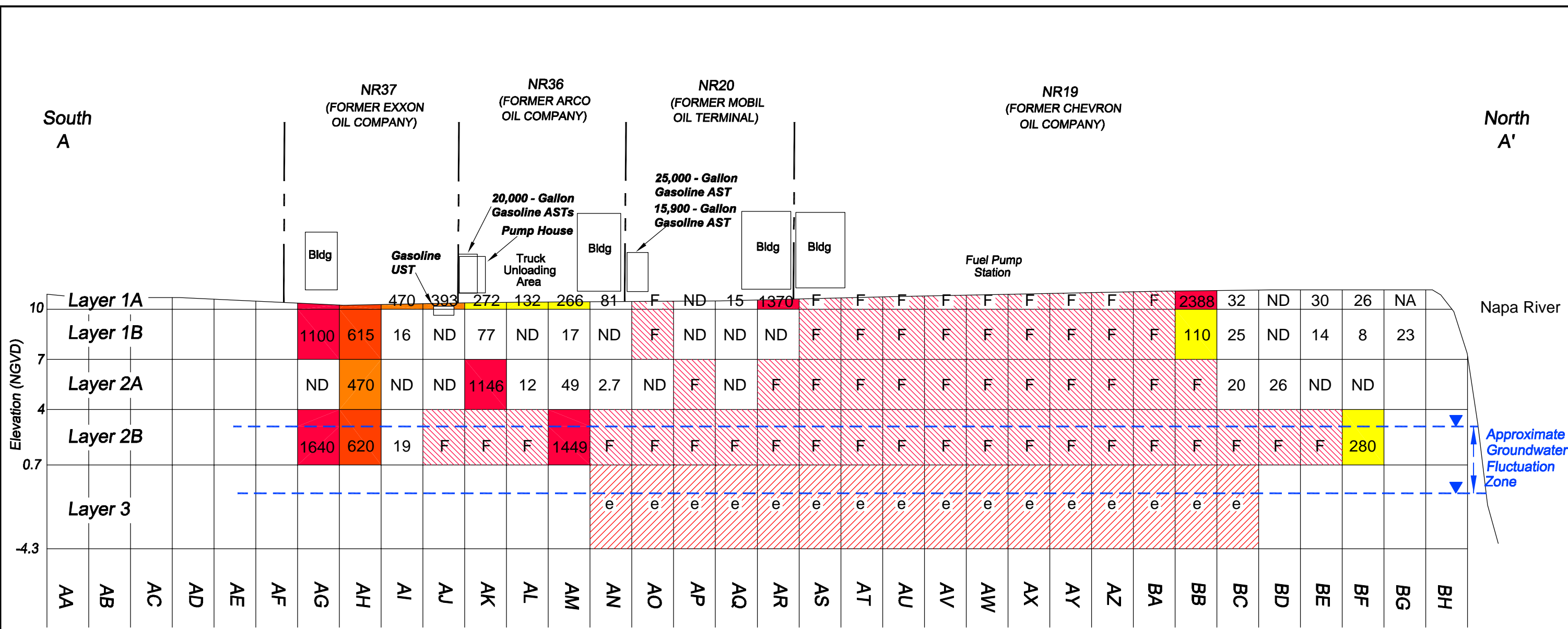


PHOTO DATED AUGUST 22, 1956
PACIFIC AERIAL SURVEY

FIGURE 7
TPH SOIL CHARACTERIZATION
PHASE 1 / LAYER 2B

JOB No. FILE No. NDSVR\INDUSTRIAL\CAD_M\LUEBK7

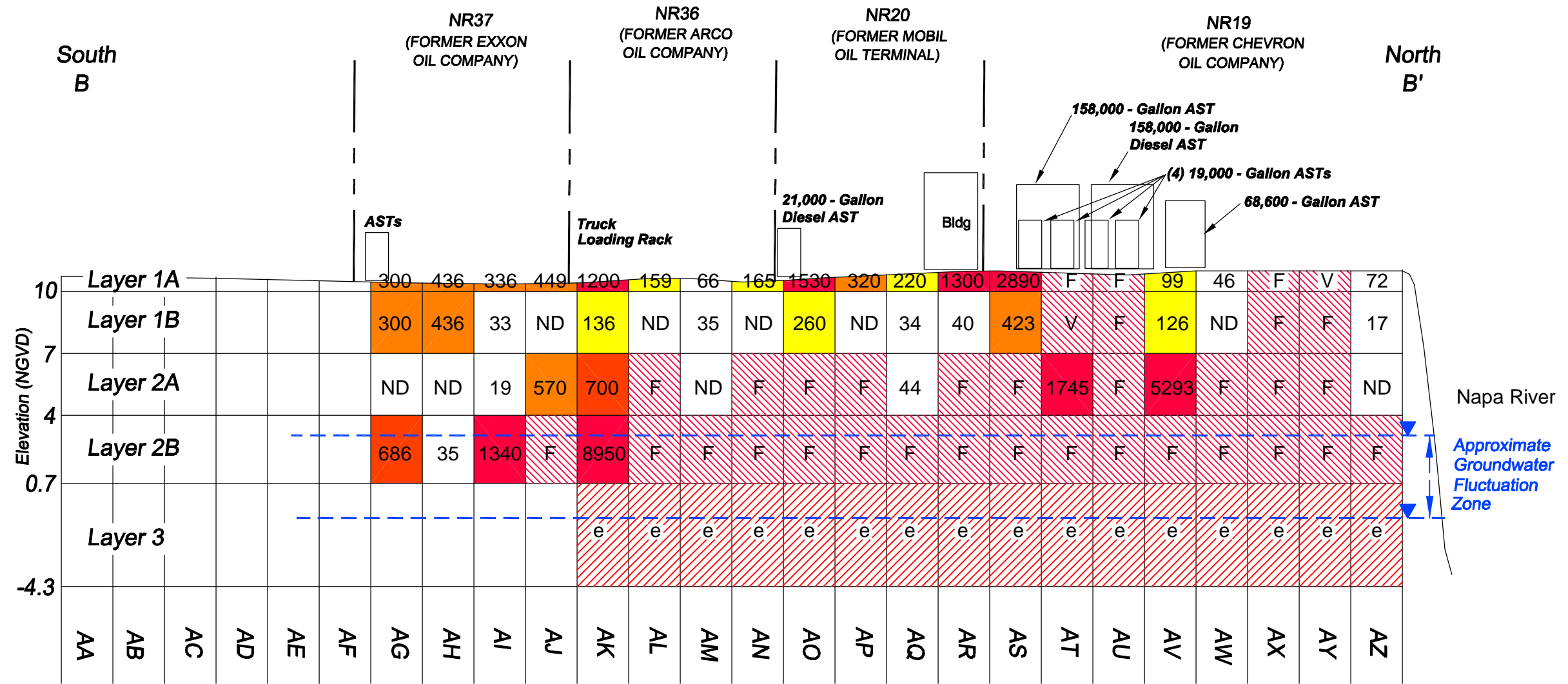


- Legend**
- Soil Field Rejected as Significantly Impacted
No Laboratory Analysis Performed (F)
or Visual Evidence Observed During Excavation (V)
 - TPH Concentration >1000 mg/kg
 - TPH Concentration 600-999 mg/kg
 - TPH Concentration 300-599 mg/kg
 - TPH Concentration 93-299 mg/kg
 - e Extent of Overexcavated Area
 - 210 Total TPH Concentration mg/kg
 - ND Not Detected

Note
Results shown represent the maximum concentration from 4-point composite sampling of grid cells adjacent to the cross section line.

Horizontal Scale 1" = 60'
Vertical Exaggeration 10x

FIGURE 8
PHASE 1 EXCAVATION RESULTS
CROSS SECTION A-A'



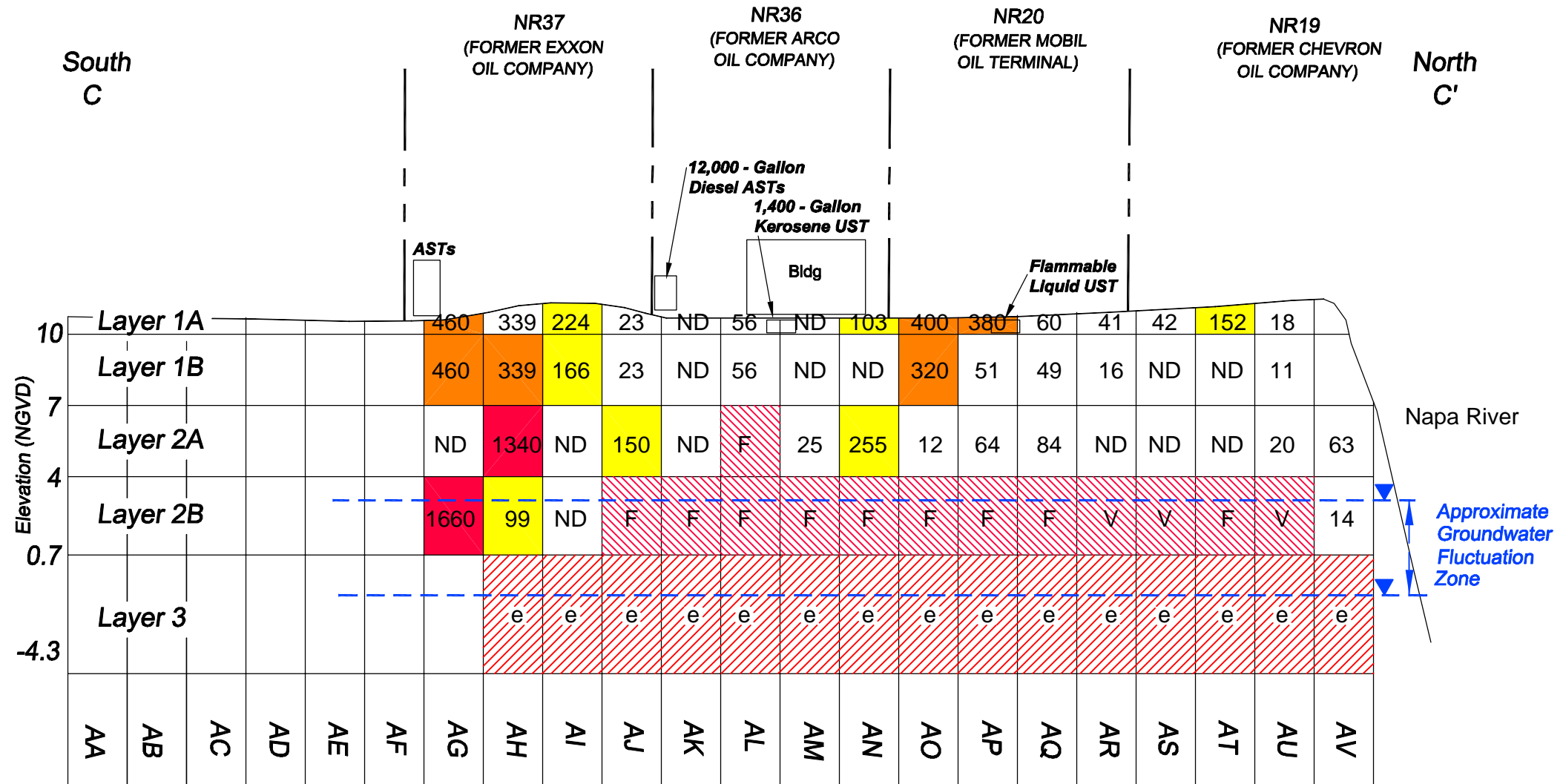
Legend

- Soil Field Rejected as Significantly Impacted No Laboratory Analysis Performed (F) or Visual Evidence Observed During Excavation (V)
- TPH Concentration >1000 mg/kg
- TPH Concentration 600-999 mg/kg
- TPH Concentration 300-599 mg/kg
- TPH Concentration 93-299 mg/kg
- Extent of Overexcavated Area
- 210 Total TPH Concentration mg/kg
- ND Not Detected

Note
Results shown represent the maximum concentration from 4-point composite sampling of grid cells adjacent to the cross section line.

Horizontal Scale 1" = 60'
Vertical Exaggeration 10x

FIGURE 9
PHASE 1 EXCAVATION RESULTS
CROSS SECTION B-B'



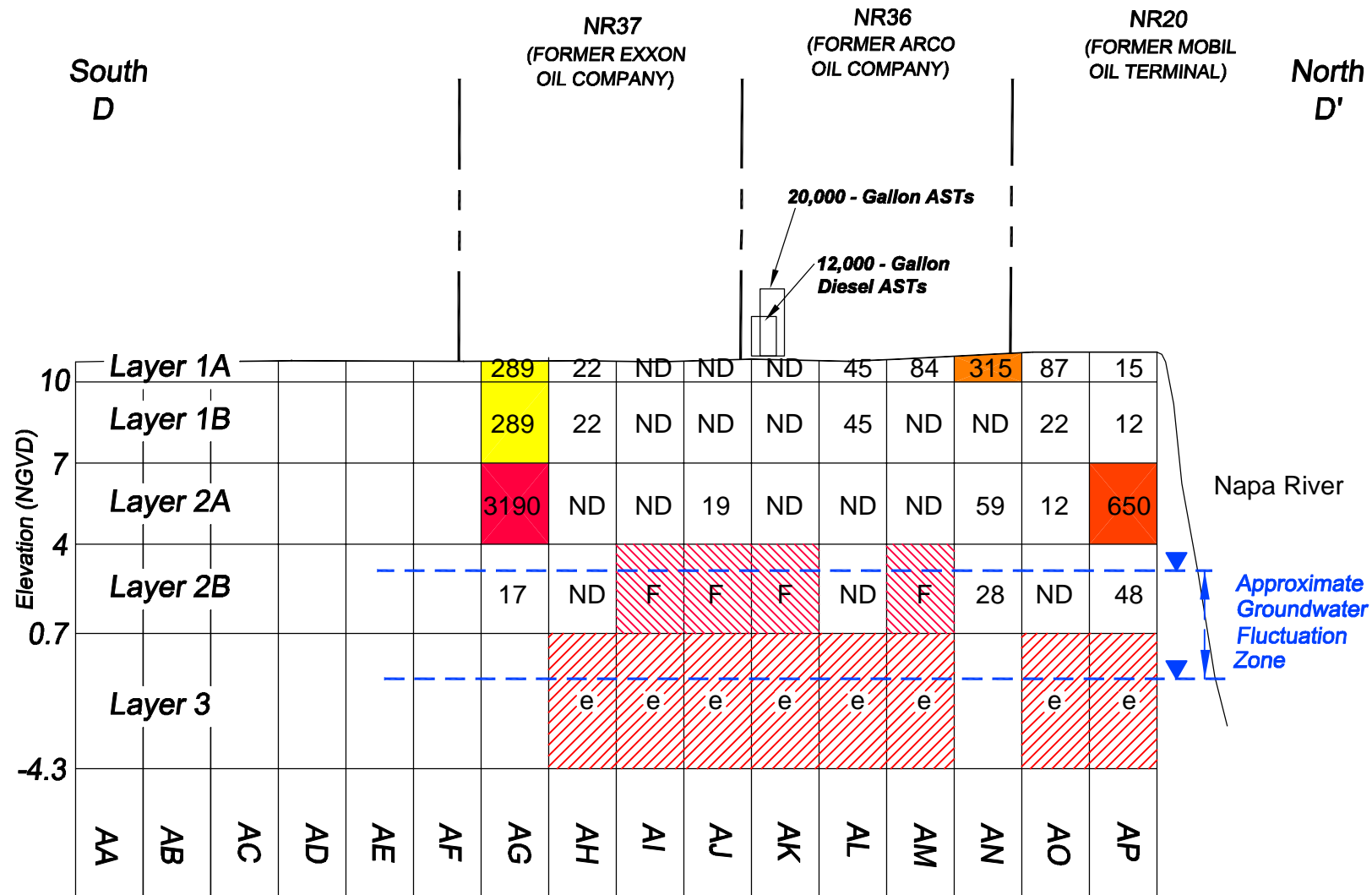
Legend

- Soil Field Rejected as Significantly Impacted
No Laboratory Analysis Performed (F)
or Visual Evidence Observed During Excavation (V)
- TPH Concentration >1000 mg/kg
- TPH Concentration 600-999 mg/kg
- TPH Concentration 300-599 mg/kg
- TPH Concentration 93-299 mg/kg
- Extent of Overexcavated Area
- 210 Total TPH Concentration mg/kg
- ND Not Detected

Note
Results shown represent the maximum concentration from 4-point composite sampling of grid cells adjacent to the cross section line.

Horizontal Scale 1" = 60'
Vertical Exaggeration 10x

FIGURE 10
PHASE 1 EXCAVATION RESULTS
CROSS SECTION C-C'



Legend

- Soil Field Rejected as Significantly Impacted
No Laboratory Analysis Performed (F)
or Visual Evidence Observed During Excavation (V)
- TPH Concentration >1000 mg/kg
- TPH Concentration 600-999 mg/kg
- TPH Concentration 300-599 mg/kg
- TPH Concentration 93-299 mg/kg
- Extent of Overexcavated Area
- 210 Total TPH Concentration mg/kg
- ND Not Detected

Note

Results shown represent the maximum concentration from 4-point composite sampling of grid cells adjacent to the cross section line.

Horizontal Scale 1" = 60'
Vertical Exaggeration 10x

FIGURE 11
PHASE 1 EXCAVATION RESULTS
CROSS SECTION D-D'