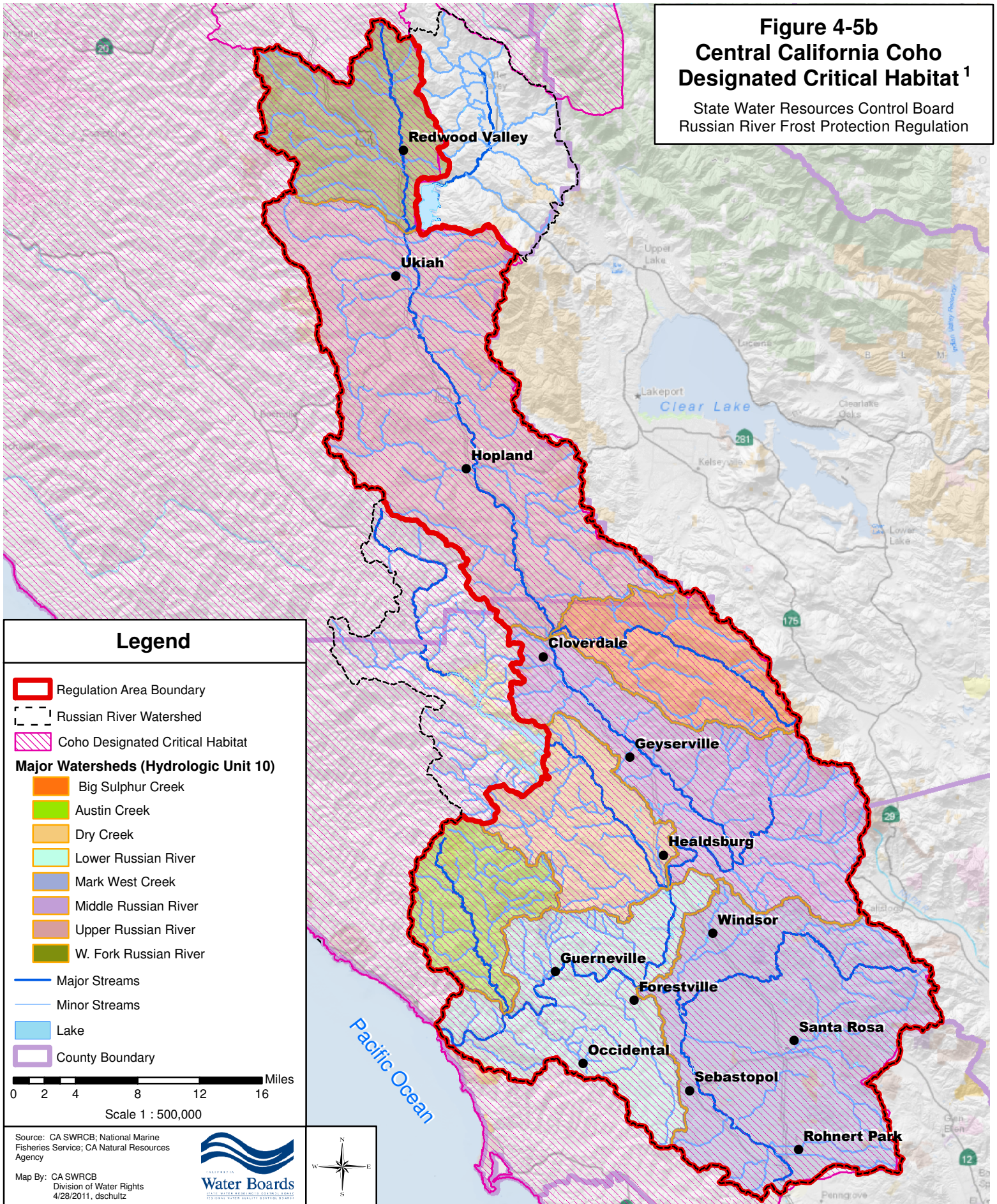


Figure 4-5b Central California Coho Designated Critical Habitat¹

State Water Resources Control Board
Russian River Frost Protection Regulation



¹ The map of critical habitat for the Central Coast Coho is the Coho evolutionary significant unit (ESU). An ESU is a population considered distinct for purposes of conservation. ESU polygons depict major basins within the current known range of each ESU. Species do not necessarily inhabit all drainages or river reaches depicted. The Central California Coho ESU is all accessible river reaches between Punta Gorda and San Lorenzo River including 2 San Francisco Bay streams: Arroyo Corte Madera del Presidio and Corte Madera Creek (64 FR 24049).