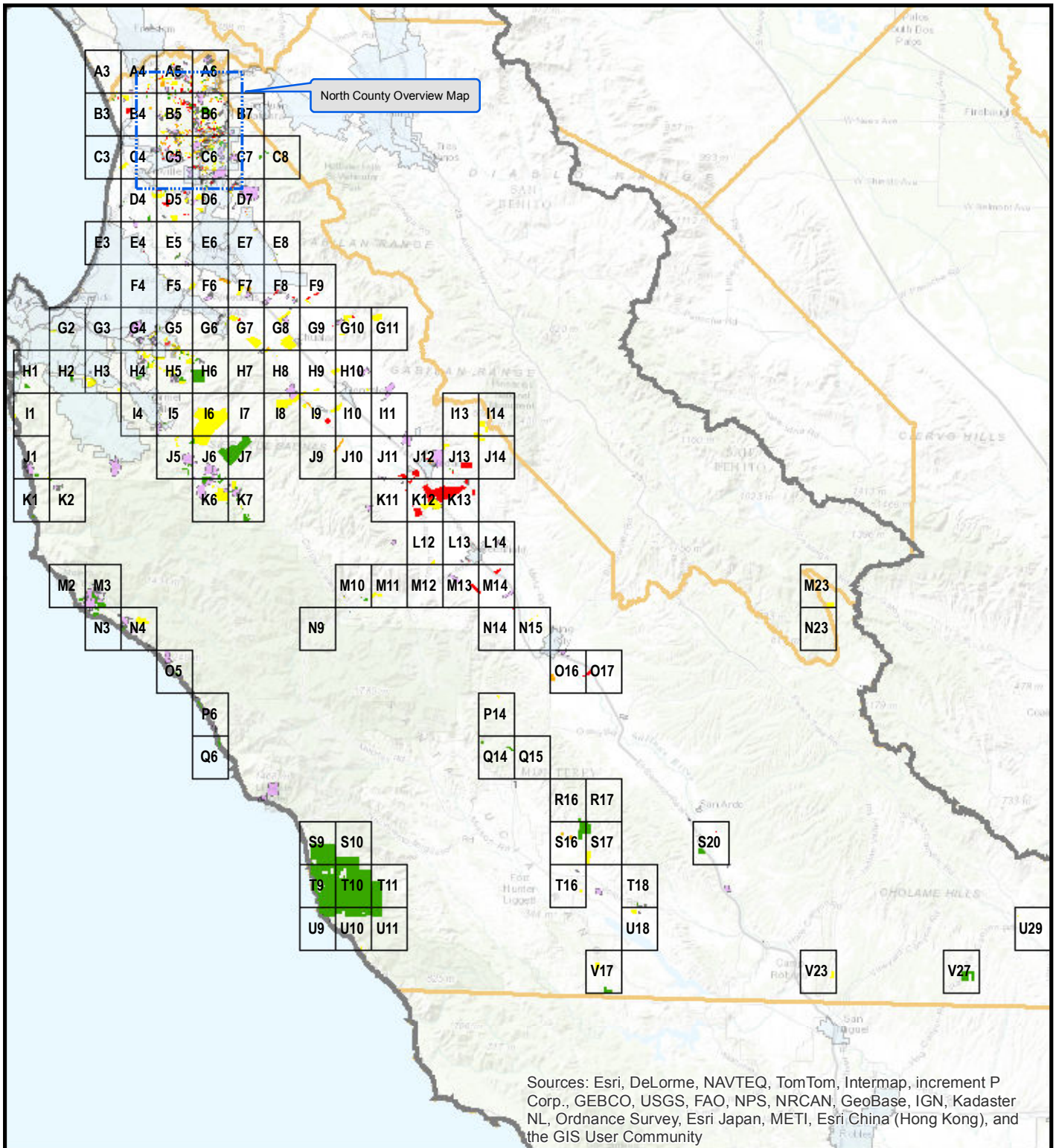


Monterey County Local Small and State Small Water Systems Maximum Nitrate as NO3 (FY 2009/10 to 2012/13)



Sources: Esri, DeLorme, NAVTEQ, TomTom, Intermap, increment P Corp., GEBCO, USGS, FAO, NPS, NRCAN, GeoBase, IGN, Kadaster NL, Ordnance Survey, Esri Japan, METI, Esri China (Hong Kong), and the GIS User Community

LEGEND

Local Small & State Small Water System Service Area

Nitrate (as NO3) Concentrations

- Non-Detect
- 0 - 22.49 mg/L
- 22.50 - 44.90 mg/L
- 45+ mg/L

OVERVIEW MAP

Public Water Systems with more than 200 service connections

P14 Focus Map Index Grid

Small Public Water Systems (15 to 200 service connections, or transient and nontransient noncommunity water systems)

State of California
REGIONAL WATER QUALITY CONTROL BOARD
Central Coast Region



Date Saved: 9/19/2013 1:48:17 PM

This data is for informational purposes only. Nitrate concentration color coded areas represent service areas (parcels served) for drinking water systems as noted by the system ID number (e.g., 270XXXX). Data represents as-served nitrate concentration from one or more supply wells and does not represent the areal extent of nitrate contamination in groundwater. Data may not be representative of other wells in the area given water quality can vary among wells near each other due to differences in well construction, including well depth. If you are not served by a permitted water system, it is recommended you have your well sampled for nitrate and other drinking water parameters to evaluate the quality of your drinking water. Contact Monterey County Environmental Health Bureau, at (831) 755-4500, for information regarding specific water systems and water quality analytical testing services.