

San Diego  
Regional Water Quality  
Control Board



Executive Officer's  
Report

June 14, 2006

## TABLE OF CONTENTS

### PART A

|   |   |   |
|---|---|---|
| 1 | 13 <sup>th</sup> Annual Enforcement Symposium                       | 1 |
| 2 | Statewide TMDL Program Training                                     | 1 |
| 3 | San Diego Wild Animal Park Water Quality Workshop and Project POWER | 2 |
| 4 | Storm Water Discussion—Environmental Forum June 7, 2006             | 2 |

### PART B

|    |  |    |
|----|--|----|
| 1  | Sanitary Sewer Overflows   | 3  |
| 2  | Clean Water Act Section 401 WQ Certification Actions Taken in May 2006     | 4  |
| 3  | Grants Update  | 4  |
| 4  | ACL Complaints-Non-submittal of Industrial Storm Water Annual Reports      | 5  |
| 5  | Proposed Gregory Canyon Landfill   | 6  |
| 6  | San Diego County Municipal Storm Water Permit – Additional Public Workshop | 6  |
| 7  | Closure of Leaking Underground Storage Tank Case                           | 7  |
| 8  | Lovett's Dry Cleaner Update  | 7  |
| 9  | La Costa Estates Construction Site in Encinitas                            | 7  |
| 10 | Lake Cuyamaca Subsurface Disposal System Status Report                     | 8  |
| 11 | SEPs and Environmental Funds for Future Projects                           | 9  |
| 12 | Statewide General WDR Requirements—Regulation of Sanitary Sewer Overflows  | 10 |

### PART C

|   |   |    |
|---|---|----|
| 1 | <i>Caulerpa taxifolia</i> Eradication Declaration Event | 10 |
| 2 | Brownfields Statewide Status Update                     | 11 |

**Attachments** for B-1, B-2, B-10, B-11 and C-1 are included at the end of the report. Also included as an attachment are the Significant NPDES Permits, WDRs and RB Actions.

# SAN DIEGO REGIONAL WATER QUALITY CONTROL BOARD

## EXECUTIVE OFFICER'S REPORT

June 14, 2006

### **PART A**

#### **SAN DIEGO REGION STAFF ACTIVITIES** *(Staff Contact)*

1. 13<sup>th</sup> Annual Enforcement Symposium *(Joann Lim)*

Joann Lim of the Northern Core Regulatory Unit, attended the 13<sup>th</sup> Annual California Environmental Protection Agency Environmental Cross Media Enforcement Symposium held in San Diego from May 30 to June 2, 2006. The symposium was attended by representatives of Cal/EPA, Boards, Departments, Offices, and local environmental agencies to discuss opportunities for coordinating their enforcement activities. The Symposium is a unique four day event that serves these goals by promoting awareness of the types of activities and conditions that may violate environmental laws, rules, regulations, or permits. The Symposium focused on enforcement procedures involving individual programs or media (air, water, waste, toxics and pesticides) as well as cross program impacts (commonly referred to as "cross media"). The program identified the process required to properly document inspections, interviews, and analysis of self monitoring and laboratory reports. Creating valid documents are the necessary tools to take enforcement actions when violations occur. By properly documenting all of the work and recognizing the need to communicate and work with other regulatory agencies, the Regional Board can effectively enforce the laws and regulations.

2. Statewide TMDL Program Training *(Julie Chan)*

Several San Diego Water Board staff members gave presentations at the Statewide TMDL Program Training held in San Diego on May 31 and June 1. The training was written and presented almost entirely by TMDL Program staff from the Water Boards. Over 100 staff members from the Water Boards' TMDL, Basin Planning, and Stormwater programs attended. In the session on Urban Runoff Implementation, Kristin Schwall and Julie Chan discussed their experiences, and lessons learned translating the Shelter Island Copper and Chollas Creek Diazinon TMDL Implementation Plans into water quality based effluent limitations and monitoring requirements in Tentative Order No. R9-2006-0011 (the new San Diego County MS4 requirements). Christina Arias presented a poster titled '*Calculating Bacteria TMDLs Utilizing a Reference System Approach to Account for Loading from Natural Sources.*' Craig Carlisle and Julie Chan conducted the first TMDL Hall of Fame Induction Ceremony in which the Shelter Island Yacht Basin Copper TMDL was honored along with 11 other worthy TMDLs from around the State.

### 3. San Diego Wild Animal Park Water Quality Workshop and Project POWER

#### Status *(Dave Gibson)*

On May 16, 2006, The San Diego Zoological Society (Society) held a water quality workshop at the Wild Animal Park. Approximately 30 representatives of elected officials and local and state agencies attended the workshop. Chairman John Minan and Dave Gibson represented the Regional Board at the workshop. The Society staff and consultants presented elements of the Water Quality Master Plan that includes improvements estimated to cost over \$10 million to facilities at the Wild Animal Park. The plans include significant changes to exhibit space and improvements to wastewater treatment facilities intended to maximize the use of recycled water, the protection of currently degraded stream channels in the exhibits, and treatment of storm water runoff from the parking areas. Staff will review and comment on the Master Plan and will meet with Society staff and consultants in July 2006 to review water quality, jurisdictional wetlands, and wastewater recycling issues as part of the proposed projects.

Following the workshop, Dave Gibson met with Cindy Wallace and Andy Schuker of the Wild Animal Park Education Department to plan the October 9, 2006 Project POWER (Protecting Our Wetlands with Educators and Regulators) wetlands workshop and inspect wetland areas in the Wild Animal Park. The goal of the San Diego Project POWER education program is to foster local stewardship to protect inland and coastal wetlands in San Diego. The half-day program, which will be held at the Wild Animal Park, will initially target local interest groups and members of the public. Future workshops will be expanded to include representatives of homeowners associations, realtor and building industry organizations, and civic and sporting groups. The emphasis of the workshops will be on the value and importance of wetlands and the regulatory and community tools to protect them.

### 4. Storm Water Discussion—Environmental Forum June 7, 2006 *(Michael McCann)*

Executive Officer John Robertus participated in a panel discussion on storm water at the forum breakfast in San Diego sponsored by the law firm of Best Best & Kreiger and SCS Engineers. The panel also included Jon Van Rhyn of the County of San Diego, Patti Krebs of the Industrial Environmental Association, and Jerry Livingston of the Building Industry Association. The tentative MS4 storm water permit for San Diego County was the main top of discussion. There was particular focus on the public input process that has been followed by the Regional Board leading up to the Board's initial hearing scheduled for June 21, 2006. Also representing the Regional Board at the forum was Michael McCann, Phil Hammer, and Craig Carlisle.

**PART B**  
**SIGNIFICANT REGIONAL WATER QUALITY ISSUES**

1. **Sanitary Sewer Overflows (SSO)** *(Eric Becker, Charles Cheng, Joann Lim, Melissa Valdovinos, Victor Vasquez) (Attachment B-1)*

From May 1 to May 31, 2006, there were nine sanitary sewer overflows (SSOs) from publicly-owned collection systems reported to the Regional Board office; four of these spills reached surface waters or storm drains, none of which resulted in closure of recreational waters. Of the total number of overflows from public systems, two were 1,000 gallons or more. The combined total volume of reported sewage spilled from all publicly-owned collection systems for the month of May 2006 was 23,005 gallons.

There were also 16 sewage overflows from private property reported in May 2006. Seven of these spills reached surface waters or storm drains, two of which resulted in closure of recreational waters. Three of the overflows from private property were 1,000 gallons or more.

The total rainfall amount for May 2006 recorded at San Diego's Lindbergh Field was 0.77 inches. For comparison, in April 2006, 0.88 inches of rainfall were recorded at Lindbergh Field, and seven public SSOs were reported. Also for comparison, in May 2005, 0.12 inches of rainfall were recorded at Lindbergh Field, and nine public SSOs were reported.

Attached is a table titled "Sanitary Sewer Overflow Statistics," updated through May 31, 2006, which contains a summary of all SSOs by fiscal year (FY) from each agency since FY 2001-2002.

It should be noted that the data for spill volume per volume conveyed (GAL/MG) could be easily misinterpreted. For a sewer agency that has a small system size, but experienced a spill of a few hundred gallons or more, the value may show high. Also, for a sewer agency that has a large system size, a high volume spill event may not result in a high value for this statistic. Hence, these numbers by themselves are not sufficiently representative of the measures being taken by a sewer agency to prevent SSOs, nor can the numbers be compared directly between agencies. The data does represent a different way to review and analyze SSO volume data as it relates to system size.

Additional information about the Regional Board's SSO regulatory program is available at the Regional Board's website at <http://www.waterboards.ca.gov/sandiego/programs/sso.html>.

No Notices of Violation (NOV) were issued in May for sewer overflows.

## 2. Clean Water Act Section 401 Water Quality Certification Actions Taken in May 2006 *(Chiara Clemente) (Attachment B-2)*

Section 401 of the Clean Water Act requires that any person applying for a federal permit which may result in a discharge of pollutants into Waters of the United States must obtain a water quality certification that that specific activity complies with all applicable state water quality standards, limitations, requirements, and restrictions. The most common federal permit that requires a 401 Certification is a CWA Section 404 permit, issued by the Army Corps of Engineers, for the placing of fill (sediment, pipes, concrete, etc.) in Waters of the U.S. (i.e. Ocean, bays, lagoons, rivers and streams).

Upon receipt of a complete 401 certification application, the Regional Board may either deny certification, with or without prejudice, or certify the project. In cases where there are impacts to Waters of the U.S., the Regional Board may issue a conditional certification. The certification can be either in the form of a conditional certification document approved by the Regional Board Executive Office, or State Waste Discharge Requirements (WDRs), approved by the Regional Board. And, in the case where a federal permit is not required because impacts are only to Waters of the State, the Regional Board may issue WDRs. Table B-2 (attached) contains a list of actions taken during the month of May. Public notification of pending 401 Water Quality Certification applications can be found on our web site at:

<http://www.waterboards.ca.gov/sandiego/programs/401cert.html>.

## 3. Grants Update *(Dave Gibson)*

### **Status of State Bond Act and federal 319(h) Grant Program Projects**

The Regional Board is currently managing 27 grant-funded contracts worth approximately \$47 million. These grants are being closely managed to ensure conformance to the grant agreement terms and conditions. Extension requests have been proposed for four Proposition 13 projects that have been delayed due to CEQA/NEPA, permitting, or administrative/scheduling reasons.

### **Proposition 40 and Proposition 50 Consolidated Grants Program**

Statewide 209 applicants were invited to submit full proposals for the Consolidated Grants programs. Full Proposal applications for the non-ocean protection projects are due to the State Water Resources Control Board (SWRCB) by June 9, 2006. The invitation lists and other information for all programs are available at:

[http://www.waterboards.ca.gov/funding/cg\\_fullproposals.html](http://www.waterboards.ca.gov/funding/cg_fullproposals.html). The full proposals will be reviewed by July 21, 2006 with funding recommendations to be made in August 2006.

The Ocean Protection Project (OPP) full proposals were due to the SWRCB on May 9, 2006. Thirteen OPP full proposals were received and reviewed and 5 projects are recommended for funding. Notification e-mails were sent to all OPP applicants on May 30, 2006. The recommended funding list is posted on the

OPP website at: [http://www.waterboards.ca.gov/funding/cg\\_ocean.html](http://www.waterboards.ca.gov/funding/cg_ocean.html). The recommended OPP funding list will be presented to the Ocean Protection Council for consideration at its June 8, 2006 meeting and presented to the SWRCB on July 5, 2006.

### **Proposition 50 Integrated Regional Water Management (IRWM) Grant Program**

The IRWM Step 2 Implementation proposal deadline has been extended to June 28, 2006, at 5:00 PM. Step 2 technical reviews are due August 10, 2006. Consensus reviews are scheduled for August 11 through August 22, 2006. The 2006 Clean Water Summit, the annual meeting hosted by the County of San Diego Project Clean Water, will focus on the San Diego IRWM Plan on June 30, 2006. Regional Board Chairman John Minan and Executive Officer John Robertus are scheduled to speak at the Clean Water Summit. Information on the Clean Water Summit is available at [http://www.projectcleanwater.org/html/cws\\_2006.html](http://www.projectcleanwater.org/html/cws_2006.html).

### **Clean Beaches Initiative Grant Program**

The SWRCB continues to accept applications for the remaining \$5.3 million in Proposition 40 funds for projects on the Competitive Location List (CLL) and for projects that provide justification for placement on the CLL. The Clean Beaches Task Force will meet on August 30, 2006 to review applications and recommend projects for funding.

### **State Revolving Fund (SRF) Loan Program**

The comment period on the draft State Fiscal Year 2006/07 Priority List ended at 5:00 pm, May 30, 2006. A project must appear on the Priority List, scheduled for adoption by the SWRCB on June 7, 2006, to be eligible to compete for SRF loan assistance. Information on the SRF is available at: <http://www.waterboards.ca.gov/funding/srf.html#plist> under "ANNOUNCEMENTS"

#### **4. Administrative Civil Liability Complaints Issued for Non-submittal of Industrial Storm Water Annual Monitoring Reports (Rebecca Stewart)**

In May and June 2006, the Regional Board issued five Complaints for Assessment of Administrative Civil Liability (Complaint) against San Diego businesses enrolled in the Statewide Industrial Storm Water Permit that have failed to submit annual monitoring reports for fiscal year 2004/05 that were due last July 31, 2006 or failed to sample storm water from their facility during the year. The Complaints, with recommended liability ranging from \$3,000 to \$6,000, were issued to:

- Active Auto Dismantlers, San Diego
- Minshew Brothers Steel Construction Inc., Lakeside
- Swift Transportation Company, Inc., San Diego

- Next Generation Gelcoat, Inc., El Cajon
- Excellent Coatings, Inc., Vista

Copies of the complaints are posted on the Regional Board's web page or can be reviewed at the Regional Board's office. Hearings on the Complaints are scheduled for the August 9, 2006 Regional Board meeting at the Regional Board office in San Diego.

5. Proposed Gregory Canyon Landfill (*John Odermatt and Carol Tamaki*)

This item is provided to update the Regional Board on recent events relating to the proposed Gregory Canyon Landfill.

*CEQA Process and Status of EIR*

There has been no change in the status of the EIR since the last EO report.

*Scheduling an Agenda Item for Consideration by the Regional Board*

As previously noted, the Regional Board cannot take action on tentative waste discharge requirements until the CEQA process has been completed. However, Regional Board staff continues to work on drafting tentative waste discharge requirements and agenda item. Our goal is to present this item to the Regional Board on November 8, 2006.

6. San Diego County Municipal Storm Water Permit – Additional Public Workshop Held on May 24, 2006 (*Phil Hammer*)

The Regional Board held an additional public workshop on May 24, 2006 on the reissuance of the San Diego County Municipal Storm Water Permit (Tentative Order No. R9-2006-0011). The public workshop was held at the request of the Copermitees and other interested parties. The purpose of the public workshop was to continue discussion on key issues raised at the previous April 26, 2006 public workshop on the Tentative Order.

The public workshop was held in a roundtable format, providing the opportunity for detailed discussion on previously identified key issues. The roundtable consisted of Regional Board members, Regional Board staff, and Copermitee representatives, as well as representatives of other types of interested parties which have frequently participated in storm water permit development (such as building/construction groups, commercial/industrial groups, engineering groups, consulting groups, and environmental groups). Interested parties seated in the audience were also invited to participate in the discussion.

Some of the topics discussed at the public workshop included: (1) development of a Hydromodification Management Plan; (2) tracking of treatment control BMP maintenance; (3) inspection and cleaning of MS4s; (4) street sweeping; (5) inspection of industrial and commercial sites; (6) implementation of Watershed Urban Runoff Management Programs; (7) assessment of program effectiveness; and (8) monitoring.



7. Closure of Leaking Underground Storage Tank Case (*Sue Pease*)

On June 1, 2006, the Regional Board staff issued a no further action letter to the Escondido School District (Discharger) for an unauthorized release of petroleum fuel wastes from a leaking underground storage tank (LUST) at San Pasqual High School in Escondido. The Discharger completed the ground water investigation and verification monitoring. The closure was publicly noticed in the agenda for the May 2006 Regional Board meeting. This action fulfilled the agency's obligation to provide public participation as required by section 2728, Chapter 16, California Code of Regulations. The Regional Board did not receive any feedback, during the 30-day public participation period, regarding the proposed action to close the LUST case.

8. Lovett's Dry Cleaner Update (*Laurie Walsh*)

The Regional Board issued Cleanup and Abatement Order R9-2005-0017 to Lovett's One Hour Dry Cleaners on August 23, 2005. This case was closed under regulatory oversight of the San Diego County Department of Environmental Health in the summer of 2005. The Regional Board decided to reopen this case due to incomplete site investigation efforts and failure to cleanup and abate the effects of the discharge of chlorinated solvents namely perchloroethene (PCE) in a beneficial use ground water basin.

In compliance with CAO R9-2005-0017, further site investigation and characterization was performed and a report submitted. The Regional Board is currently reviewing this report however, brief review of the reports findings revealed that the PCE plume is almost twice as large as was documented in the DEH Case Closure Summary. The consultant performing the investigation work, DB Environmental, is recommending additional work to define the down gradient toe of the plume. The next report to be submitted in accordance with CAO R9-2005-0017 is a Feasibility Study on June 9, 2006.

9. La Costa Estates Construction Site in Encinitas (*Ben Neill*)

As reported in the April 12, 2006 EO Report, a number of recent complaints have been received regarding sediment-laden water discharges from the La Costa Estates construction project on Gascony Road in Encinitas. The project consists of the construction of four homes on 2.6 acres of land on a hillside where storm water runoff drains to the complainant's down gradient property. Previously on January 18, 2005, the owner of the construction site received a Notice of Violation from the Regional Board for the discharge of sediment-laden water and for inadequately implemented best management practices.

Due to additional complaints received about the construction site, Investigative Order No. R9-2006-0040 was issued on April 3, 2006 to the City of Encinitas requesting a technical report that describes the actions taken by the City to ensure compliance with the San Diego municipal storm water Permit, Order No. 2001-001. The City responded to the Investigative Order on April 17 detailing how the City has required the installation of detention basins and pumps to keep

a portion of the runoff from entering upon the neighboring properties. In addition, the City's report describes the inspection and enforcement actions taken by the City at the construction site.

On April 5, 2006; May 22, 2006; and May 26, 2006 the Regional Board received additional complaints with photos showing sediment-laden discharges onto the neighboring properties from the La Costa Estates construction project verified by the Regional Board on May 22, 2006. The Regional Board may consider further enforcement action to the developer and the City for a failure to meet the requirements of the statewide general construction permit for storm water discharges (Order No. 99-08-DWQ), and the San Diego municipal storm water permit (Order No. 2001-01).

10. Lake Cuyamaca Subsurface Disposal System Status Report (Brian Kelley)  
(Attachment B-10)

On June 10, 2004, the Regional Board adopted Order No. R9-2004-0015 for the proposed subsurface discharge of wastes from the Lake Cuyamaca Recreation and Park District. The waste disposal facilities, located upgradient of Lake Cuyamaca, consists of a septic tank leach field infiltration system. Installation of the facilities was completed on October 18, 2004, but the District has not been able to use the facilities. The information provided to the Regional Board by the District demonstrated that the discharge of wastes from the infiltration system would not be in compliance with the order. Specifically, the discharge from the infiltration system would cause the Basin Plan groundwater objectives for nitrate, manganese, and iron to be exceeded.

At the request of the District, the Regional Board at its May 11, 2005 Board Meeting considered the District's request to be allowed to use the waste disposal facilities. After a lengthy discussion, the Executive Officer's stated that he would approve the use of the facilities when the District demonstrates with groundwater monitoring data that there is a trend toward compliance with the Basin Plan objectives. The discharger agreed to continue the monitoring of groundwater quality until there was sufficient data to demonstrate that the levels of nitrate, iron and manganese in the groundwater would fall below Basin Plan ground water objectives, taking into account the mixing of the effluent with the up-gradient groundwater passing under the disposal area.

In a letter received on December 2, 2005, the District requested a revision of the Monitoring Well Plan to extend the depth of Monitoring Wells 1 and 2, currently at a depth of 50 ft and 30 ft, to 200-250 ft, respectively (See Attachment). In a response letter dated February 27, 2006 (See Attachment), the Regional Board denied the revision of the Monitoring Well Plan, since the primary objective of the Monitoring Well Plan is to assess the impacts of the waste discharge on the groundwater quality in the vicinity of the leach field system. The leach field system is located a few feet below the ground surface.

As a result, to date, the District has not been able to demonstrate that a discharge from the disposal system would comply with Order No. R9-2004-0015.

11. Status of Supplemental Environmental Projects (SEP) and Environmental Funds for Future Projects (Mark Alpert) (Attachment B-11)

This is a status report of all currently active Supplemental Environmental Projects (SEPs) authorized by the Regional Board as well as environmental funds collected as part of settlement of enforcement actions where a specific project has yet to be approved for funding. The SEP summary table (Document 1) provides more detailed information regarding the SEP projects. The Regional Board is currently tracking the following four active SEPs (discharger responsible for the project in parentheses):

- **\$4,500 SEP** for SCCRP to support a Regional Marine Monitoring program Southern California Bight (South Orange County Wastewater Authority)
- **\$70,000 SEP** for San Elijo Lagoon Conservancy to perform an Invasive plant species removal project (JPMC Real Estate, Inc. and City of Escondido)
- **\$155,000 SEP** for the consulting firm Merkel and Associates to perform Invasive Species Removal and Erosion Control Program in Escondido Creek Watershed (JPMC Real Estate, Inc and City of Escondido)
- **\$260,000** for SCCWRP to conduct a sediment toxicity source analysis water quality project in Chollas Creek (City of San Diego Metropolitan Wastewater Department)

There are four Environmental Fund accounts established for specific types of environmental projects, where a specific project has yet to be approved for funding (discharger responsible for the project in parentheses):

- **\$28,500** for monitoring in marine coastal waters, bays lagoons and estuaries (City of San Diego Metropolitan Wastewater Department)
- **\$50,000** for water quality project in San Diego River (Metropolitan Transportation System) (selection before the Regional Board on June 14, 2006)
- **\$500,000** for monitoring in San Diego and Mission Bays (City of San Diego Metropolitan Wastewater Department)
- **\$240,000** for the San Diego River Conservancy to perform water quality projects within the San Diego River Watershed (City of San Diego Metropolitan Wastewater Department)

## 12. Statewide General Waste Discharge Requirements—Regulation of Sanitary Sewer Overflows (Michael McCann)

On May 2, 2006 the State Water Resources Control Board (SWRCB) adopted general waste discharge requirements for the regulation of sanitary sewer overflows—SWRCB Order No. 2006-0003-DWQ. The requirements address the reporting of sewage spill incidents and proper sewage collection system management and operations necessary to protect public health, water quality, and the public's investment in sewage system infrastructure.

The SWRCB plans to make available to all sewerage agencies the process for filing notices of intent (NOI) for enrollment under the new general requirements. Dischargers will have until November 2, 2006 to enroll for coverage through submittal of their NOIs.

This Regional Board's existing Order No. 96-04 covers much of what is now required statewide by the new general order. A review of both orders is needed and may result in a recommendation to amend Order No. 96-04.

A copy of Order No. 2006-0003-DWQ along with other information on the program can be accessed at the SWRCB's website:  
<http://www.waterboards.ca.gov/sso>

## PART C STATEWIDE ISSUES OF IMPORTANCE TO THE SAN DIEGO REGION

### 1. *Caulerpa taxifolia* Eradication Declaration Event (Chiara Clemente) (Attachment C-1)

On May 11, 2006, a letter was sent (attached) on behalf of the Southern California *Caulerpa* Action Team (SCCAT) to the California Department of Fish and Game (CDFG), recommending that CDFG declare the successful eradication of the invasive, non-native seaweed *Caulerpa taxifolia* from Agua Hedionda Lagoon, in the San Diego region, and Huntington Harbour in the Santa Ana region. The letter was sent with additional documentation (available at [www.sccat.net](http://www.sccat.net)) supporting SCCAT's request. As indicated in the letter, SCCAT will be hosting a victory press conference on July 12, 2006 at the Agua Hedionda Lagoon Discovery Center. Board Members will be invited to attend. SDRWQCB has been a principal participant in SCCAT from the beginning. Much of the funding for eradication and prevention work has come from grants provided by the State Water Resources Control Board at the request of, or with the support, of the SDRWQCB.

Surveys of other southern California coastal waters will continue to determine if there are other, currently unknown, infestations. Likewise, outreach and education efforts directed towards preventing new infestations and encouraging reporting of possible infestations will also continue.

2. Brownfields Statewide Status Update - California Land Reuse and Revitalization Act of 2004 (CLRRA) (former Montanez – AB 389) (John Anderson)  
 Brownfields cases are included in the Spill, Leaks, Investigation, and Cleanup (SLIC) Program, which is the Regional Water Board's cleanup program where project proponents receive technical oversight and regulatory review of investigation and cleanup plans. The party pursuing the cleanup reimburses staff oversight costs incurred by the Regional Water Board. The outcome of the SLIC program process may range from a No Further Action (NFA) letter indicating cleanup is complete with no land-use restrictions, to the design and implementation of a remedial system.

Currently the San Diego Regional Water Board provides oversight to 11 brownfields/ redevelopment cases through our SLIC Program. To date, the San Diego Regional Water Board has not received any CLRRA applications.

### **CalEPA Status of Statewide Brownfields Applications Since July 1, 2005**

#### Memorandum of Agreement Application Statistics

|  |     |
|--|-----|
| Total Applications Received              | 152 |
| Applications Received by Regional Boards | 82  |
| Applications Received by DTSC            | 70  |
| Determinations Made                      | 144 |
| Determinations Made to Regional Boards   | 63  |
| Determinations Made to DTSC              | 82  |
| Determinations Not Yet Made              | 3   |
| Applications Not Eligible                | 4   |

Current as of 5/30/2006

**CALIFORNIA REGIONAL WATER QUALITY CONTROL BOARD  
SAN DIEGO REGION**

**SIGNIFICANT NPDES PERMITS, WDRs,  
AND REGIONAL BOARD ACTIONS**

**June 14, 2006**

APPENDED TO EXECUTIVE OFFICER REPORT

**SIGNIFICANT NPDES PERMITS, WDRS, AND RB ACTIONS**

| DATE OF REPORT | NAME OF PERMIT/WDR/RB ACTION   | Action Type                        | Initial Document Application Complete | Dish./RWQ Limits and Monitoring Plan Known | Draft Complete | Public Rev. & Comment | BOARD HEARING & ADOPTION | Consent Item | COMMENTS                  | Staff      |
|----------------|--|------------------------------------|---------------------------------------|--|----------------|-----------------------|--------------------------|--------------|---------------------------|------------|
| June 14, 2006  | <b>JUNE 21, 2006 RB MEETING</b><br>San Diego Regional Board Office         |                                    |                                       |  |                |                       |                          |              |                           |            |
|                | SAN DIEGO COUNTY MUNICIPAL STORMWATER PERMIT                               | Initial Hearing: Permit Reissuance | 100%                                  | 100%                                       | 100%           | 20%                   | June 21, 2006            | No           | NPDES Workplan FY 2005-06 | Hammer     |
|                | <b>AUGUST 9, 2006 RB MEETING</b><br>San Diego Regional Board Office        |                                    |                                       |  |                |                       |                          |              |                           |            |
|                | SAN DIEGO COUNTY MUNICIPAL STORMWATER PERMIT                               | Adoption NPDES Permit Reissuance   | 100%                                  | 100%                                       | 100%           | 0%                    | August 9, 2006           | No           |                           | Hammer     |
|                | REGIONWIDE BACTERIA TOTAL MAXIMUM DAILY LOAD                               | Adoption TMDL                      | NA                                    | NA   | 90%            | 50%                   | August 9, 2006           | No           | TMDL Workplan FY 2005-06  | Arias      |
|                | CABRILLO LLC ENCINA POWER PLANT CARLSBAD                                   | NPDES Permit Reissuance            | 100%                                  | 100%                                       | 75%            | 0%                    | August 9, 2006           | No           | NPDES Workplan FY 2004-05 | Morris     |
|                | SOUTH ORANGE COUNTY WASTEWATER AUTHORITY--ALSO CREEK OCEAN OUTFALL         | NPDES Permit Reissuance            | 100%                                  | 100%                                       | 90%            | 0%                    | August 9, 2006           | No           | NPDES Workplan FY 2005-06 | Lim        |
|                | SOUTH ORANGE COUNTY WASTEWATER AUTHORITY--SAN JUAN CRK. OCEAN OUTFALL      | NPDES Permit Reissuance            | 100%                                  | 100%                                       | 90%            | 0%                    | August 9, 2006           | No           | NPDES Workplan FY 2005-06 | Lim        |
|                | GROUNDWATER EXTRACTION GENERAL PERMIT FOR SAN DIEGO BAY                    | NPDES Permit Reissuance            | NA                                    | 50%  | 0%             | 0%                    | August 9, 2006           | No           | NPDES Workplan FY 2004-05 | Alpert     |
|                | RANCHO MISSION VIEJO DEVELOPMENT SAN JUAN AND SAN MATEO BASINS ORANGE CO.  | WDRs and 401 WQ Certification      | 20%                                   | 10%  | 0%             | 0%                    | August 9, 2006           | No           |                           | Haas       |
|                | USMC CAMP PENDLETON REPLACEMENT OF PLANT NO. 13 DISCHARGE TO OCEAN OUTFALL | NPDES Permit Revision              | 100%                                  | 100%                                       | 0%             | 0%                    | August 9, 2006           | No           | NPDES Workplan FY 2005-06 | Cheng      |
|                | JACK AND MARK STIEFEL DAIRY RIVERSIDE COUNTY                               | NPDES Permit Reissuance            | 80%                                   | 90%  | 90%            | 0%                    | August 9, 2006           | No           | NPDES Workplan FY 2004-05 | Ghoram     |
|                | CITY OF ESCONDIDO WASTEWATER FACILITY AND DISCHARGE TO OCEAN OUTFALL       | Hearing: Admih. Civil Liability    | 100%                                  | NA   | 100%           | 20%                   | August 9, 2006           | No           | ACL COMPLAINT \$1,797,150 | Stewart    |
|                | DAKOTA RANCH DEVELOPMENT CO. 401 WATER                                     | Hearing: Admih.                    | 100%                                  | NA   | 100%           | 20%                   | August 9, 2006           | No           | ACL COMPLAINT \$140,500   | Melbourn   |
|                | CITY OF SAN DIEGO SOUTH BAY WATER RECLAMATION FACILITY                     | NPDES Permit Reissuance            | 100%                                  | 100%                                       | 90%            | 0%                    | August 9, 2006           | Yes          | NPDES Workplan FY 2005-06 | Valdovinos |
|                | FALLBROOK PUBLIC UTILITY DISTRICT RECLAMATION PROJECT SAN DIEGO COUNTY     | WDRs Update                        | NA                                    | 100%                                       | 80%            | 0%                    | August 9, 2006           | Yes          |                           | Vasquez    |
|                | VALLEY CENTER MUN. WATER DISTRICT LIVE OAK RANCH                           | New WDRs                           | 50%                                   | 0%   | 0%             | 0%                    | August 9, 2006           | Yes          |                           | Becker     |

**SIGNIFICANT NPDES  
PERMITS, WDRS, AND RB ACTIONS**

6/9/2006 9:13 AM

| DATE OF REPORT  | ACTION TYPE                 | Initial Document Application Complete | Dish./RWQ Limits and Monitoring Plan Known | Draft Complete | Public Rev. & Comment | BOARD HEARING & ADOPTION | Consent Item | COMMENTS                  | Staff  |
|---|-----------------------------|---------------------------------------|--|----------------|-----------------------|--------------------------|--------------|---------------------------|--------|
| <b>June 14, 2006</b>  |                             |                                       |  |                |                       |                          |              |                           |        |
| <b>NAME OF PERMIT/WDR/RB ACTION</b>   |                             |                                       |  |                |                       |                          |              |                           |        |
| EASTERN MUN. WATER DISTRICT<br>TEMECULA VALLEY WRTF RIVERSIDE CO.                         | WDR Revision                | 100%                                  | 50%  | 0%             | 0%                    | August 9, 2006           | Yes          |                           | Cheng  |
| VALLEY CENTER MUN. WATER DISTRICT<br>WOODS VALLEY TREATMENT FACILITY                      | WDR Revision                | 100%                                  | 90%  | 50%            | 0%                    | August 9, 2006           | Yes          |                           | Becker |
| <b>OCTOBER 11, 2006 RB MEETING</b><br>Rancho California Water District Office<br>Temecula |                             |                                       |  |                |                       |                          |              |                           |        |
| OCEAN DISCHARGER RECEIVING WATER<br>MONITORING PROGRAM UPDATES                            | NPDES Permits               | NA                                    | 50%  | 0%             | 0%                    | October 11, 2006         | No           | NPDES Workplan FY 2004-05 | Kelley |
| FRANK J. KONYN DAIRY SAN PASQUAL VALLEY<br>SAN DIEGO COUNTY                               | NPDES Permit<br>Reissuance  | 80%                                   | 90%  | 0%             | 0%                    | October 11, 2006         | No           | NPDES Workplan FY 2005-06 | Cheng  |
| KAMPEN BROS. (fmr.DeJAGER/BOERSMA)<br>DAIRY RIVERSIDE COUNTY                              | NPDES Permit<br>Reissuance  | 0%                                    | 90%  | 0%             | 0%                    | October 11, 2006         | No           | NPDES Workplan FY 2005-06 | Ghoram |
| I.D. DAIRY (VAN TOL DAIRY) RAMONA   | NPDES Permit<br>Reissuance  | 0%                                    | 90%  | 0%             | 0%                    | October 11, 2006         | No           | NPDES Workplan FY 2005-06 | Ghoram |
| <b>NOVEMBER 8, 2006 RB MEETING</b><br>Rancho California Water Dist., Temecula             |                             |                                       |  |                |                       |                          |              |                           |        |
| PROPOSED GREGORY CANYON LANDFILL<br>NORTH SAN DIEGO COUNTY                                | Hearing: New<br>WDRs        | 100%                                  | 40%  | 40%            | 10%                   | November 8, 2006         | No           | Initial Public Hearing    | Tamaki |
| GROUNDWATER EXTRACTION GENERAL<br>PERMIT FOR SAN DIEGO REGION                             | NPDES Permit<br>Reissuance  | NA                                    | 50%  | 0%             | 0%                    | November 8, 2006         | No           |                           | Albert |
| URBAN RUNOFF TREATMENT DISCHARGES<br>GENERAL PERMIT                                       | New NPDES<br>General Permit | 0%                                    | 50%  | 0%             | 0%                    | November 8, 2006         | No           |                           | Morris |
| HUBBS RESEARCH AGUA HEDIONDA LAGOON   | NPDES Permit<br>Reissuance  | 90%                                   | 50%  | 0%             | 0%                    | November 8, 2006         | Yes          |                           | Morris |
| ANZA PINES MOBILE HOME PARK RIVERSIDE CO  | WDR Update                  | 100%                                  | 50%  | 0%             | 0%                    | November 8, 2006         | Yes          |                           | Cheng  |
| CITY OF ESCONDIDO HAARF WATER<br>RECLAMATION PROJECT                                      | WDR Revision                | 100%                                  | 50%  | 0%             | 0%                    | November 8, 2006         | No           |                           | Morris |



SANITARY SEWER OVERFLOW STATISTICS (Updated through May 31, 2006)

| SEWAGE COLLECTION AGENCY       | SYSTEM SIZE <sup>B</sup> |      | NO. OF SEWAGE SPILLS<br>(LISTED BY FISCAL YEAR (FY) -<br>JULY 1 THROUGH JUNE 30) |       |       |       |                    | SPILLS PER 100 MILES<br>(LISTED BY FY) |       |       |       |                    | SPILL VOLUME<br>2005-06 <sup>A</sup> |                     |
|--------------------------------|--------------------------|------|--|-------|-------|-------|--------------------|--|-------|-------|-------|--------------------|--------------------------------------|---------------------|
|                                | Miles                    | MGD  | 01-02  | 02-03 | 03-04 | 04-05 | 05-06 <sup>A</sup> | 01-02                                  | 02-03 | 03-04 | 04-05 | 05-06 <sup>A</sup> | GAL                                  | GAL/MG <sup>C</sup> |
|                                |                          |      |  |       |       |       |                    |  |       |       |       |                    |                                      |                     |
| <b>ORANGE COUNTY:</b>          |                          |      |  |       |       |       |                    |  |       |       |       |                    |                                      |                     |
| EL TORO WD                     | 55                       | 2.2  | 3  | 1     | 3     | 3     | 2                  | 5.5                                    | 1.8   | 5.5   | 5.5   | 3.7                | 13,506                               | 18.1                |
| EMERALD BAY SERVICE DISTRICT   | 6                        | 0.09 | 0  | 0     | 0     | 1     | 0                  | 0.0                                    | 0.0   | 0.0   | 16.7  | 0.0                | 0                                    | 0.0                 |
| IRVINE RANCH WD                | 36                       | 2.0  | 0  | 0     | 0     | 0     | 0                  | 0.0                                    | 0.0   | 0.0   | 0.0   | 0.0                | 0                                    | 0.0                 |
| LAGUNA BEACH, CITY OF          | 95                       | 2.4  | 10   | 27    | 8     | 11    | 5                  | 10.5                                   | 28.4  | 8.4   | 12.6  | 5.3                | 700                                  | 0.9                 |
| MOULTON NIGUEL WD              | 530                      | 13.0 | 2  | 1     | 2     | 5     | 1                  | 0.4                                    | 0.2   | 0.4   | 0.9   | 0.2                | 400                                  | 0.1                 |
| SAN CLEMENTE, CITY OF          | 179                      | 4.5  | 6  | 7     | 2     | 5     | 2                  | 3.3                                    | 3.9   | 1.1   | 2.8   | 1.1                | 475                                  | 0.3                 |
| SAN JUAN CAPISTRANO, CITY OF   | 100                      | 3.4  | 0  | 0     | 1     | 2     | 0                  | 0.0                                    | 0.0   | 1.0   | 2.0   | 0.0                | 0                                    | 0.0                 |
| SANTA MARGARITA WD             | 546                      | 10.7 | 12   | 4     | 5     | 6     | 3                  | 2.2                                    | 0.7   | 0.9   | 1.1   | 0.5                | 4,125                                | 1.1                 |
| SOUTH COAST CWD                | 132                      | 4.0  | 5  | 8     | 7     | 4     | 3                  | 3.8                                    | 6.1   | 5.3   | 3.0   | 2.3                | 80,720                               | 60.8                |
| TRABUCO CANYON WD              | 43                       | 0.72 | 0  | 0     | 1     | 3     | 0                  | 0.0                                    | 0.0   | 2.3   | 7.0   | 0.0                | 0                                    | 0.0                 |
| <b>RIVERSIDE COUNTY:</b>       |                          |      |  |       |       |       |                    |  |       |       |       |                    |                                      |                     |
| EASTERN MWD                    | 421                      | 9.5  | 1  | 3     | 7     | 0     | 0                  | 0.2                                    | 0.7   | 1.7   | 0.0   | 0.0                | 0                                    | 0.0                 |
| ELSINORE VALLEY MWD            | 80                       | 2.0  | 0  | 0     | 1     | 3     | 1                  | 0.0                                    | 0.0   | 1.3   | 3.8   | 1.3                | 348                                  | 0.5                 |
| MURRIETA MWD                   | 25                       | 0.5  | 0  | 0     | 1     | 0     | 0                  | 0                                      | 0     | 4.0   | 0.0   | 0.0                | 0                                    | 0.0                 |
| RANCHO CA WD                   | 71                       | 2.9  | 2  | 0     | 1     | 2     | 1                  | 2.8                                    | 0.0   | 1.4   | 2.8   | 1.4                | 1,125                                | 1.2                 |
| <b>SAN DIEGO COUNTY:</b>       |                          |      |  |       |       |       |                    |  |       |       |       |                    |                                      |                     |
| BUENA SANITARY DISTRICT        | 84                       | 1.9  | 0  | 2     | 1     | 2     | 3                  | 0.0                                    | 2.4   | 1.2   | 2.4   | 3.6                | 9,750                                | 15.6                |
| CARLSBAD MWD                   | 214                      | 7.2  | 15   | 6     | 6     | 12    | 8                  | 7.0                                    | 2.8   | 2.8   | 4.7   | 3.7                | 1,382                                | 0.6                 |
| CHULA VISTA, CITY OF           | 400                      | 16.0 | 6  | 3     | 1     | 7     | 4                  | 1.5                                    | 0.8   | 0.3   | 1.3   | 1.0                | 555                                  | 0.1                 |
| CORONADO, CITY OF              | 53                       | 3.8  | 5  | 2     | 5     | 0     | 0                  | 9.4                                    | 3.8   | 9.4   | 0.0   | 0.0                | 0                                    | 0.0                 |
| DEL MAR, CITY OF               | 30                       | 1.1  | 2  | 7     | 1     | 0     | 2                  | 6.7                                    | 23.4  | 3.3   | 0.0   | 6.7                | 7,250                                | 19.1                |
| EL CAJON, CITY OF              | 198                      | 9.1  | 2  | 3     | 0     | 3     | 0                  | 1.0                                    | 1.5   | 0.0   | 1.5   | 0.0                | 0                                    | 0.0                 |
| ENGINITAS, CITY OF             | 118                      | 4.1  | 2  | 6     | 1     | 5     | 0                  | 1.7                                    | 5.1   | 0.8   | 4.2   | 0.0                | 0                                    | 0.0                 |
| ESCONDIDO, CITY OF             | 350                      | 10.8 | 14   | 3     | 2     | 4     | 3                  | 4.0                                    | 0.9   | 0.6   | 1.1   | 0.9                | 4,768                                | 1.3                 |
| FAIRBANKS RANCH COMM SERV DIST | 15                       | 0.21 | 0  | 0     | 0     | 0     | 0                  | 0.0                                    | 0.0   | 0.0   | 0.0   | 0.0                | 0                                    | 0.0                 |
| FALLBROOK PUBLIC UTILITY DIST  | 72                       | 2.0  | 17   | 22    | 9     | 10    | 6                  | 23.6                                   | 30.6  | 12.5  | 13.9  | 8.3                | 6,635                                | 9.9                 |
| IMPERIAL BEACH, CITY OF        | 84                       | 2.2  | 1  | 14    | 2     | 8     | 2                  | 1.2                                    | 16.7  | 2.4   | 9.5   | 2.4                | 425                                  | 0.6                 |
| LA MESA, CITY OF               | 155                      | 5.8  | 12   | 3     | 4     | 3     | 0                  | 7.7                                    | 1.9   | 2.6   | 1.9   | 0.0                | 0                                    | 0.0                 |
| LEMON GROVE, CITY OF           | 69                       | 2.4  | 9  | 4     | 4     | 3     | 0                  | 13.0                                   | 5.8   | 5.8   | 4.3   | 0.0                | 0                                    | 0.0                 |

**SANITARY SEWER OVERFLOW STATISTICS (Updated through May 31, 2006)**

| SEWAGE COLLECTION AGENCY             | SYSTEM SIZE <sup>B</sup> |      | NO. OF SEWAGE SPILLS<br>[LISTED BY FISCAL YEAR (FY) -<br>JULY 1 THROUGH JUNE 30] |       |       |       |                    | SPILLS PER 100 MILES<br>(LISTED BY FY) |       |       |       |                    | SPILL VOLUME<br>2005-06 <sup>A</sup> |                     |
|--------------------------------------|--------------------------|------|--|-------|-------|-------|--------------------|--|-------|-------|-------|--------------------|--------------------------------------|---------------------|
|                                      | Miles                    | MGD  | 01-02  | 02-03 | 03-04 | 04-05 | 05-06 <sup>A</sup> | 01-02                                  | 02-03 | 03-04 | 04-05 | 05-06 <sup>A</sup> | GAL                                  | GAL/MG <sup>C</sup> |
|                                      |                          |      |  |       |       |       |                    |  |       |       |       |                    |                                      |                     |
| <b>SAN DIEGO COUNTY (continued):</b> |                          |      |  |       |       |       |                    |  |       |       |       |                    |                                      |                     |
| LEUCADIA CWD                         | 185                      | 4.2  | 5  | 6     | 1     | 6     | 3                  | 2.7                                    | 3.2   | 0.5   | 2.7   | 1.6                | 1,500                                | 1.1                 |
| NATIONAL CITY, CITY OF               | 97                       | 5.1  | 0  | 1     | 2     | 1     | 4                  | 0.0                                    | 1.0   | 2.1   | 1.0   | 4.1                | 3,300                                | 1.9                 |
| OCEANSIDE, CITY OF, WTR UTIL DEP     | 446                      | 13.0 | 17   | 23    | 22    | 13    | 7                  | 3.8                                    | 5.2   | 4.9   | 3.1   | 1.6                | 3,050                                | 0.7                 |
| OLIVENHAIN MWD                       | 16                       | 0.39 | 1  | 2     | 0     | 3     | 0                  | 6.3                                    | 12.5  | 0.0   | 18.8  | 0.0                | 0                                    | 0.0                 |
| OTAY MWD                             | 86                       | 1.4  | 0  | 3     | 1     | 0     | 0                  | 0.0                                    | 3.5   | 1.2   | 0.0   | 0.0                | 0                                    | 0.0                 |
| PADRE DAM MWD                        | 150                      | 5.1  | 4  | 3     | 3     | 1     | 1                  | 2.7                                    | 2.0   | 2.0   | 0.7   | 0.7                | 1,200                                | 0.7                 |
| PAUMA VALLEY COMM SERVICE DIS        | 8                        | 0.07 | 0  | 0     | 0     | 0     | 0                  | 0.0                                    | 0.0   | 0.0   | 0.0   | 0.0                | 0                                    | 0.0                 |
| POWAY, CITY OF                       | 170                      | 4.0  | 1  | 5     | 3     | 0     | 5                  | 0.6                                    | 2.9   | 1.8   | 0.0   | 2.9                | 3,550                                | 2.6                 |
| RAINBOW MWD                          | 54                       | 0.74 | 2  | 2     | 6     | 2     | 0                  | 3.7                                    | 3.7   | 11.1  | 3.7   | 0.0                | 0                                    | 0.0                 |
| RAMONA MWD                           | 83                       | 1.3  | 5  | 2     | 2     | 4     | 4                  | 6.0                                    | 2.4   | 2.4   | 3.6   | 4.8                | 87,650                               | 201.5               |
| RANCHO SANTA FE COMM SERV DIST       | 52                       | 0.44 | 1  | 1     | 0     | 2     | 0                  | 1.9                                    | 1.9   | 0.0   | 3.9   | 0.0                | 0                                    | 0.0                 |
| SAN DIEGO CO, PUBLIC WORKS           | 380                      | 11.0 | 4  | 11    | 2     | 2     | 3                  | 1.1                                    | 2.9   | 0.5   | 0.5   | 0.8                | 33,900                               | 9.2                 |
| SAN DIEGO, CITY OF, MWWD             | 2,894                    | 170  | 226  | 193   | 115   | 122   | 74                 | 7.8                                    | 6.7   | 4.0   | 3.3   | 2.6                | 187,680                              | 3.3                 |
| SOLANA BEACH, CITY OF                | 52                       | 1.2  | 2  | 1     | 6     | 1     | 1                  | 3.8                                    | 1.9   | 11.5  | 0.0   | 1.9                | 2,400                                | 5.9                 |
| USMC BASE, CAMP PENDLETON            | 194                      | 3.1  | 18   | 23    | 14    | 12    | 16                 | 9.3                                    | 11.9  | 7.2   | 5.2   | 8.3                | 58,825                               | 57.6                |
| US NAVY                              | 123                      | 4.0  | 24   | 12    | 11    | 13    | 10                 | 19.5                                   | 9.8   | 9.0   | 10.6  | 8.1                | 20,270                               | 15.1                |
| VALLECITOS WD                        | 202                      | 6.1  | 4  | 5     | 4     | 6     | 7                  | 2.0                                    | 2.5   | 2.0   | 2.5   | 3.5                | 2,032                                | 1.0                 |
| VALLEY CENTER MWD                    | 48                       | 0.32 | 0  | 3     | 1     | 1     | 0                  | 0.0                                    | 6.3   | 2.1   | 2.1   | 0.0                | 0                                    | 0.0                 |
| VISTA, CITY OF                       | 198                      | 6.5  | 4  | 4     | 7     | 9     | 4                  | 2.0                                    | 2.0   | 3.5   | 4.6   | 2.0                | 3,525                                | 1.6                 |
| WHISPERING PALMS COMM SERV DIS       | 17                       | 0.26 | 1  | 1     | 0     | 0     | 0                  | 5.8                                    | 5.8   | 0.0   | 0.0   | 0.0                | 0                                    | 0.0                 |
| REGION 9 TOTAL                       | 9615                     | 363  | 445  | 427   | 275   | 266   | 185                |  |       |       |       |                    | 541,046                              |                     |
| AVERAGE <sup>1</sup>                 |                          |      |  |       |       |       |                    | 4.6                                    | 4.4   | 2.9   | 2.8   | 1.9                |                                      | 9                   |
| STANDARD DEVIATION <sup>2</sup>      |                          |      |  |       |       |       |                    | 5.0                                    | 7.0   | 3.4   | 4.4   | 2.4                |                                      | 31                  |
| MEDIAN <sup>3</sup>                  |                          |      |  |       |       |       |                    | 2.4                                    | 2.4   | 2.0   | 2.5   | 0.9                |                                      | 1                   |

<sup>A</sup> Includes available preliminary data for July 1, 2004 through May 31, 2006, and may not include all spills less than 1,000 gallons that did not enter surface waters or storm drains during this period.

<sup>B</sup> As of June 2003.

<sup>C</sup> Volume of spills for the period in gallons divided by the amount conveyed for the period in million gallons.

<sup>D</sup> Included with Eastern Municipal Water District

<sup>1</sup> The average is the sum of all values divided by the number of values.

<sup>2</sup> In a normally distributed set of values, 68% of the values are within one standard deviation either above or below the average value.

<sup>3</sup> The median is the middle value in a set; half the values are above the median, and half are below the median.

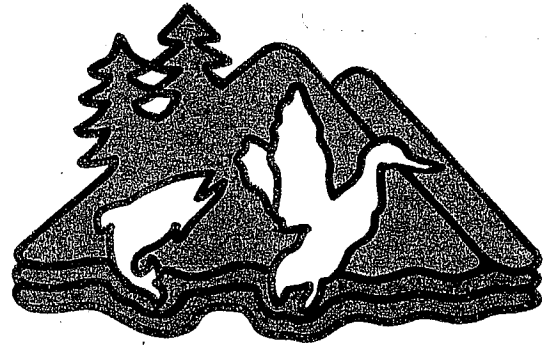
CLEAN WATER ACT SECTION 401 WATER QUALITY CERTIFICATION ACTIONS  
FOR THE PERIOD OF May 1, 2006 THROUGH May 31, 2006

| DATE      | APPLICANT                               | PROJECT TITLE                                    | PROJECT DESCRIPTION  | WATERBODY                               | IMPACT (Acres) <sup>1</sup>  | MITIGATION  | CERTIFICATION ACTION <sup>2</sup> |
|-----------|---|--|--|---|--|---|-----------------------------------|
| 5/5/2006  | Opportunity Properties, LP<br>Murrietta | Hunter Road Project                              | Residential development of Tract 31878 with 114 single family units and designation of 35 acres of open space at the South end of the property   | Warm Springs Creek                      | Streambed (P)<br>0.02  | Creation of 0.1 acre of wetland   | Conditional Certification         |
| 5/12/2006 | Carlsbad Municipal Water District       | Lake Calavera Reservoir Dam Removal Improvements | Construction and repairs to the existing intake/outlet works, spillway and access road and existing outlet piping using slip-lining methods. Construction of a control building and installation of fencing for improved site security around the dam operations | Calavera Creek, Lake Calavera Reservoir | Wetland (P)<br>0.062 acre, (T)<br>0.012<br>Streambed (P)<br>0.062 acre | Creation of 0.246 acre of wetland   | Conditional Certification         |
| 5/12/06   | Pacific Scene Homes, National City      | Canyon Ridge Subdivision                         | Housing development requiring the installation of a culvert that will permanently impact non-wetland waters of the US and CDFG streambed   | Sweetwater River                        | Streambed (P)<br>0.017 acre  | Creation of 0.012 acre wetland and restoration of 0.068 acres of Waters of the U.S. | Conditional Certification         |

1. Wetland refers to vegetated waters of the U.S. and streambed refers to unvegetated waters of the U.S. (P) = permanent impacts. (T) = temporary impacts.
2. Low impact certification is issued to projects that have minimal potential to adversely impact water quality. Conditional certification is issued to projects that have the potential to adversely impact water quality, but by complying with technical conditions, will have minimal impacts. Denials are issued when the project will adversely

CLEAN WATER ACT SECTION 401 WATER QUALITY CERTIFICATION ACTIONS  
FOR THE PERIOD OF May 1, 2006 THROUGH May 31, 2006

impact water quality and suitable mitigation measures are not proposed or possible. Time expired refers to projects that may proceed due to the lack of an action by the Regional Board within specified regulatory timelines. Withdrawn refers to projects that the applicant or Regional Board have withdrawn due to procedural problems that have not been corrected within one year.



## Lake Cuyamaca RECREATION AND PARK DISTRICT

December 2, 2005

Mr. John H. Robertus  
 Executive Officer  
 California Regional Water Quality Control Board  
 San Diego Region  
 9174 Sky Park Court, Suite 100  
 San Diego, California 92123-4340

Re: Revised Monitoring Well Plan  
 Monitoring and Reporting Program No. R9-2004-0015  
 Lake Cuyamaca Recreation and Park District Septic Tank/Leach Field System

Dear Mr. Robertus:

This letter presents a revised monitoring well plan for the Lake Cuyamaca Recreation and Park District septic tank/leach field system.

**Background.** Regional Board Order No. R9-2004-0015 establishes requirements for the proposed discharge of effluent to a septic tank/leach field system near Lake Cuyamaca. The septic tank/leach field system would serve District facilities at Lake Cuyamaca, which include a restaurant, campground restrooms, and a fish cleaning station. The proposed discharge site is located within the Cuyamaca Hydrologic Subarea (HSA 907.43).

Requirement "E" of Monitoring and Reporting Program No. R9-2004-0015 establishes the following requirement for the submittal of an initial monitoring well program:

**E. Monitoring Wells**

*The discharger shall submit an initial monitoring well plan to the Regional Board within 30 days of adoption of this Order. The initial monitoring well plan shall include, but not be limited to, the number, location, and depth of monitoring wells. Monitoring wells shall be installed to groundwater depth to verify compliance with the limitations specified in Section B. Performance Requirements and the Basin Plan groundwater quality objectives. The initial monitoring well plan shall contain at least 3 monitoring wells to determine flow direction and compliance; two wells down gradient of the subsurface disposal leach field infiltration system and one well up gradient to assess background concentration. The plan shall clearly identify which wells are proposed as compliance monitoring wells. These wells shall be located down gradient of the subsurface disposal leach field system(s). The monitoring well plan is subject to approval by the Regional Board.*

After consultation with Regional Board staff, the District developed and submitted to the Regional Board an initial monitoring well plan. This initial monitoring well plan included the three following monitoring wells:

- MW-1, a shallow monitoring well (proposed as a compliance well) located approximately 800 feet south and downgradient from the leach field site,
- MW-2, a shallow monitoring well located immediately downgradient from the leach field site, and
- MW-3, a shallow monitoring well (originally a deeper well, but subsequently filled in) located approximately 500 feet north and upgradient from the leach field site.

An attached figure presents the location of the monitoring wells and the location of the constructed septic tank/leach field disposal system.

While the District never received formal approval of the submitted monitoring plan, the District installed the proposed monitoring wells and conducted water quality sampling in accordance with the provisions of Monitoring and Reporting Program No. R9-2004-0015. Kennedy/Jenks Consultants reviewed the monitoring well results and prepared a compliance report dated April 24, 2005. The compliance report was submitted to the Regional Board on behalf of the District. In the compliance report, Kennedy/Jenks Consultants noted that groundwater samples collected from Monitoring Well Nos. MW-1, MW-2, and MW-3 did not comply with Basin Plan objectives for nitrate, iron, and manganese. The compliance report presented evidence, however, that concentrations of nitrate, iron, and manganese in the monitoring wells were likely affected by the 2003 Cedar Fire in combination with the above-normal precipitation that occurred in 2004/2005.

On the basis of the findings presented in the compliance report, the District requested Regional Board approval to initiate operation of the septic tank/leach field system. In April 2005, the Regional Board voted to not allow operation of the system because the existing monitoring data did not demonstrate compliance with Basin Plan groundwater quality objectives is demonstrated.

The District recognizes that compliance with Basin Plan groundwater quality objectives must be demonstrated in order for the Regional Board to authorize operation of the septic tank/leach field system. Subsequent to the April 2005 Regional Board meeting, the District collected additional water quality data from the monitoring wells. The subsequent monitoring results indicate that the shallow monitoring wells continue to be influenced by the effects of the Cedar Fire. This effect is even visually noticeable in the collected near-surface groundwater samples, as groundwater collected from the shallow wells has a darkened "sooty" appearance. Additionally, the wells continue to show elevated concentrations of nitrate, iron, and manganese.

District consultants indicate that fire-related effects on near-surface groundwater should abate over time, with near-surface groundwaters in higher elevation (upgradient) areas showing improvement prior to near-surface groundwaters in lower (downgradient) elevations. Water quality samples collected during 2005 in the upgradient Monitoring Well No. MW-3 would appear to support this anticipated trend, as indicated in the following table:

| Date of Sample | Groundwater Nitrate Concentration in MW-3 mg/l (as NO <sub>3</sub> ) |
|----------------|--|
| 3/28/05        | 13.9   |
| 6/7/05         | 6.7  |
| 10/24/05       | 4.1  |

Near-surface groundwater quality in Monitoring Well No. MW-2 (immediately downstream from the leach field infiltration system) appears to be showing improvement during 2005, with concentrations (as NO<sub>3</sub>) ranging from 8 to 13 mg/l. Near-surface groundwater quality in both Monitoring Well Nos. MW-1 and MW-2, however, continue to exceed the 5.0 mg/l NO<sub>3</sub> groundwater quality objective for HSA 907.43.

**Proposed Revised Monitoring Well Plan.** The District's 2002 report of waste discharge documented that assimilative capacity for nitrate exists within HSA 907.43. This assimilative capacity was demonstrated on the basis of groundwater quality results from offsite wells in the vicinity of Lake Cuyamaca.

While near-surface groundwater appears to continue to be influenced by effects of the Cedar Fire, groundwater quality in potable wells within the basin (all of which withdraw groundwater from more than near-surface depths) indicate compliance with the nitrate standard. The shallow monitoring wells proposed in the District's original monitoring well plan thus appear to characterize only groundwater quality within the upper several feet of the aquifer, and do not appear to be representative of overall groundwater quality within HSA 907.43.

The District proposes a revised monitoring plan in order to better represent groundwater quality within HSA 907.43. Under the revised plan, monitoring well locations would remain as shown on the attached figure, but Monitoring Well Nos. MW-1 and MW-2 would be extended to a depth of approximately 200 to 250 feet. Extending the monitoring wells to a depth of approximately 200 to 250 feet would allow the monitoring wells to:

- better characterize groundwater quality in the vicinity of the leach field system (instead of being representative of only the upper few feet of groundwater),

- better characterize the quality of groundwater that is beneficially used in the basin, as local groundwater wells utilize water from more than just the upper few feet of the aquifer,
- be reflective of the overall assimilative capacity within the HSA, and
- dampen out short-term transitory surface effects on near-surface groundwater (e.g. effects from fire, etc.) to provide a more useful water quality data base for assessing long-term effects associated with operation of the septic tank/leach field system.

New wells would be constructed near the existing monitoring wells. The new MW-1 well would be located adjacent to the existing well on Helix Water District property. A new MW-2 well would be constructed in the vicinity of the existing MW-2 on the opposite side of Highway 79 within State of California property. This site was mentioned as a good candidate location by Dr. Charles Cheng during the construction of the existing wells and was also noted by one of the Regional Board members during the April 2005 Board meeting held in Laguna Beach. This was also a location discussed in a subsequent meeting held in your office shortly after the April Board meeting. Permission from the State Parks Department is required prior to installing the new MW-2 well at this site.

The revised monitoring plan presented in this letter has been developed in consultation with Michael R. Welch P.h.D., P.E, Consulting Engineer and Matt A. Tebbetts P.E. with Kennedy/Jenks Consultants. The revised plan has been reviewed and found to be acceptable by the Helix Water District.

The District requests your approval of the revised monitoring program. Under the proposed revised monitoring well plan, the District (after your approval of the monitoring plan) would extend the depth of the monitoring wells and collect water quality samples. On the basis of the collected water quality data, the District would prepare and submit a compliance report to the Regional Board that documents proposed District actions to insure compliance with Basin Plan groundwater quality objectives and requirements set forth in Order No. R9-2004-0015. Depending on the results of groundwater quality monitoring from the monitoring wells, this compliance plan may include well head treatment of the local potable supply to insure compliance with the requirements of Order No. R9-2004-0015.

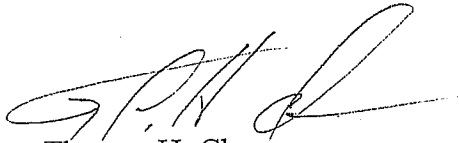
Please call me if you have any questions about the District's proposed revised monitoring program. We would appreciate the opportunity to meet with you to discuss the proposed monitoring well plan and inspect the monitoring well sites.



Proposed Revised Monitoring Well Plan  
Order No. R9-2004-0015  
Lake Cuyamaca Recreation and Park District  
December 2, 2005  
Page 5 of 5

Thank you for your consideration.

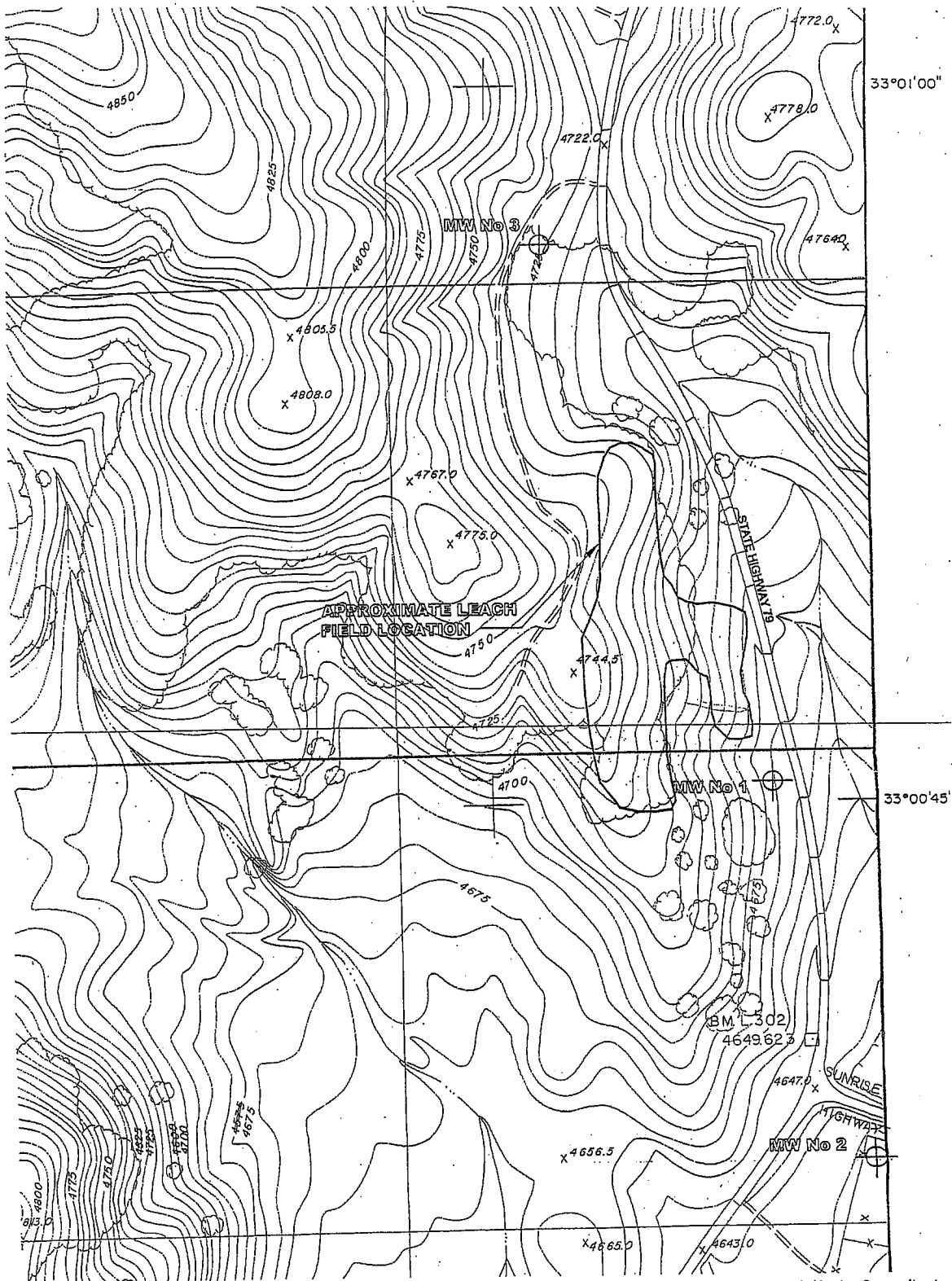
Sincerely,

A handwritten signature in black ink, appearing to read 'T. H. Chapman', with a long horizontal flourish extending to the right.

Thomas H. Chapman  
Chairman

Attachment: Monitoring Well Site Plan (Kennedy/Jenks Consultants)

cc Mark Weston, General Manager, Helix Water District  
Michael R. Welch, Consulting Engineer  
Matt A. Tebbetts, Kennedy/Jenks Consultants



33°01'00"

33°00'45"

APPROXIMATE LEACH  
FIELD LOCATION

MW No 3

MW No 1

MW No 2

BM L 302  
4649.623

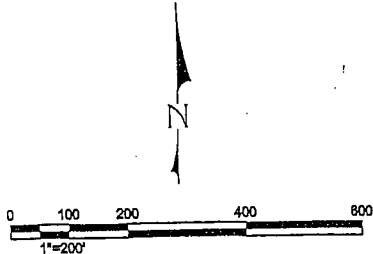
Kennedy/Jenks Consultants

LAKE CUYAMACA  
PARK AND RECREATION DISTRICT

Wastewater Infiltration  
Disposal System

014663.00  
REV. 6.09.04

Monitoring Well Site Plan





# California Regional Water Quality Control Board

## San Diego Region



Alan C. Lloyd, Ph.D.  
Secretary for  
Environmental  
Protection

9174 Sky Park Court, Suite 100, San Diego, California 92123-4340  
(858) 467-2952 • Fax (858) 571-6972  
<http://www.swrcb.ca.gov/rwqcb9>

Arnold Schwarzenegger  
Governor

February 27, 2006

Mr. Tom H. Chapman  
Board Chairman  
Lake Cuyamaca Recreation and Park District  
15027 Highway 79  
Julian, CA 92036

In Reply Refer To:  
POTW: 07-0097.01: LIMJ

Dear Mr. Chapman:

### REVISED MONITORING WELL PLAN, MONITORING AND REPORTING PROGRAM NO. R9-2004-0015

### FACILITY: LAKE CUYAMACA RECREATION AND PARK DISTRICT SEPTIC TANK/LEACH FIELD SYSTEM

The Regional Board has received your letter dated December 2, 2005 regarding a Revised Monitoring Well Plan for the Monitoring and Reporting Program No. R9-2004-0015.

The primary objective of the Monitoring Well Plan is to assess the impacts of the waste discharge on the groundwater quality in the vicinity of the leach field system. Also, the State Board Regional Control Board/ California Integrated Waste Management Board Regulations, Section 20415 General Water Quality Monitoring and System Requirements, Ground Water Monitoring System for detection monitoring program (attached), states "ground water monitoring systems shall include . . . Monitoring Points . . . installed at appropriate locations and depths to yield ground water samples from the uppermost aquifer that represents the quality of ground water passing the Point of Compliance and to allow for the detection of a release from the Unit."

The Revised Monitoring Well Plan proposes to extend the existing Monitoring Well Nos. MW-1 and MW-2 to a depth of approximately 200 to 250 feet. However, the leach field system is located a few feet below the ground surface and the effluent from the system will flow into and affect the near-surface groundwater, not the deeper aquifer that is 200 feet or more below ground. Therefore, it is the near-surface groundwater that is considered to be within the vicinity of the leach field system and the uppermost aquifer that represents the quality of ground water passing the point of compliance. Monitoring wells that are 200 to 250 feet deep are not applicable to the District's leach field system or the Monitoring and Reporting Program No. R9-2004-0015. The depths of the current monitoring wells are within the uppermost aquifer that represents the quality of groundwater passing the Point of Compliance and should allow for the detection of a

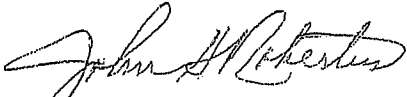
release from the leach field system and, thus, is adequate at meeting the requirements of the Monitoring Well Plan.

The Regional Board fully appreciates the Park District's efforts to comply with the requirements contained in Order No. 2004-0015. The Regional Board, however, does not approve the Revised Monitoring Well Plan for the reasons stated above.

The heading portion of this letter includes a Regional Board code number noted after "In reply refer to:" In order to assist us in the processing of your correspondence please include this code number in the heading or subject line portion of all correspondence and reports to the Regional Board pertaining to this matter.

If you have any questions regarding the above, please contact Ms. Joann Lim at (858) 637-5589, or via email at [jl原因@waterboards.ca.gov](mailto:jl原因@waterboards.ca.gov).

Respectfully,

  
JOHN H. ROBERTUS  
Executive Officer

JHR:mpm:bdk:jl原因

CC: Matt Tebbetts  
Principal Engineer  
Kennedy/Jenks Consultants  
16855 West Bernardo Drive Suite 360  
San Diego, CA 92127

Attachment: State Board Regional Control Board/ California Integrated Waste Management Board Regulations, page 32.

1 Water Standard (under §20390) for a period of three consecutive  
 2 years.  
 3 Note: Authority cited: Section 1058, Water Code. Reference:  
 4 Sections 13172, 13263, and 13267, Water Code; Section 43103,  
 5 Public Resources Code.

6 §20415. SWRCB - General Water Quality Monitoring and  
 7 System Requirements. [C15: §2550.7 // T15:  
 8 §17783.5(d)]

9 (a) The discharger shall comply with the requirements of this  
 10 section for any water quality monitoring program developed to  
 11 satisfy §20420, §20425, or §20430 of this article.

12 (b) Ground Water Monitoring System.

13 (1) General—Except as provided under ¶(e)(3), the discharger  
 14 shall establish a ground water monitoring system for each Unit. This  
 15 ground water monitoring system shall include:

16 (A) For All Programs—for all monitoring and response  
 17 programs, a sufficient number of Background Monitoring Points (as  
 18 defined in §20164) installed at appropriate locations and depths to  
 19 yield ground water samples from the uppermost aquifer that  
 20 represent the quality of ground water that has not been affected by a  
 21 release from the Unit;

22 (B) For DMP—for a detection monitoring program  
 23 under §20420:

24 1. a sufficient number of Monitoring Points (as  
 25 defined in §20164) installed at appropriate locations and depths to  
 26 yield ground water samples from the uppermost aquifer that  
 27 represent the quality of ground water passing the Point of  
 28 Compliance and to allow for the detection of a release from the Unit;

29 2. a sufficient number of Monitoring Points installed  
 30 at additional locations and depths to yield ground water samples  
 31 from the uppermost aquifer to provide the best assurance of the  
 32 earliest possible detection of a release from the Unit;

33 3. a sufficient number of Monitoring Points and  
 34 Background Monitoring Points installed at appropriate locations and  
 35 depths to yield ground water samples from portions of the zone of  
 36 saturation, including other aquifers, not monitored pursuant to  
 37 ¶(b)(1)(B)1. and ¶(b)(1)(B)2., to provide the best assurance of the  
 38 earliest possible detection of a release from the Unit;

39 4. a sufficient number of Monitoring Points and  
 40 Background Monitoring Points installed at appropriate locations and  
 41 depths to yield ground water samples from zones of perched water to  
 42 provide the best assurance of the earliest possible detection of a  
 43 release from the Unit; and

44 5. Monitoring Point locations and depths that include  
 45 the zone(s) of highest hydraulic conductivity in each ground water  
 46 body monitored pursuant to this subsection [i.e., under ¶(b),  
 47 inclusive].

48 (C) For EMP—for an evaluation monitoring program  
 49 under §20425:

50 1. a sufficient number of Monitoring Points installed  
 51 at appropriate locations and depths to yield ground water samples  
 52 from the uppermost aquifer that represent the quality of ground water  
 53 passing the Point of Compliance and at other locations in the  
 54 uppermost aquifer to provide the data needed to evaluate changes in  
 55 water quality due to the release from the Unit;

56 2. a sufficient number of Monitoring Points and  
 57 Background Monitoring Points installed at appropriate locations and

depths to yield ground water samples from portions of the zone of  
 saturation, including other aquifers, not monitored pursuant to  
 ¶(b)(1)(C)1., to provide the data needed to evaluate changes in water  
 quality due to the release from the Unit; and

3. a sufficient number of Monitoring Points and  
 Background Monitoring Points installed at appropriate locations and  
 depths to yield ground water samples from zones of perched water to  
 provide the data needed to evaluate changes in water quality due to  
 the release from the Unit; and

(D) For CAP—for a corrective action program under  
 §20430:

1. a sufficient number of Monitoring Points installed  
 at appropriate locations and depths to yield ground water samples  
 from the uppermost aquifer that represent the quality of ground water  
 passing the Point of Compliance and at other locations in the  
 uppermost aquifer to provide the data needed to evaluate the  
 effectiveness of the corrective action program;

2. a sufficient number of Monitoring Points and  
 Background Monitoring Points installed at appropriate locations and  
 depths to yield ground water samples from portions of the zone of  
 saturation, including other aquifers, not monitored pursuant to  
 ¶(b)(1)(D)1., to provide the data needed to evaluate the effectiveness  
 of the corrective action program; and

3. a sufficient number of Monitoring Points and  
 Background Monitoring Points installed at appropriate locations and  
 depths to yield ground water samples from zones of perched water to  
 provide the data needed to evaluate the effectiveness of the  
 corrective action program.

(2) Alternate Background Locations—The ground water  
 monitoring system may include Background Monitoring Points that  
 are not hydraulically upgradient of the Unit if the discharger  
 demonstrates to the satisfaction of the RWQCB that sampling at  
 other Background Monitoring Points will provide samples that are  
 representative of the background quality of ground water or are more  
 representative than those provided by the upgradient Background  
 Monitoring Points.

(3) Drillers' Logs—Copies of drillers' logs which the  
 Department of Water Resources requires to be submitted pursuant to  
 §13751 of the California Water Code shall be submitted to the  
 RWQCB.

(4) Monitoring Well Performance Standards.

(A) All monitoring wells shall be cased and constructed  
 in a manner that maintains the integrity of the monitoring well bore  
 hole and prevents the bore hole from acting as a conduit for  
 contaminant transport.

(B) The sampling interval of each monitoring well shall  
 be appropriately screened and fitted with an appropriate filter pack to  
 enable collection of representative ground water samples.

(C) For each monitoring well, the annular space (i.e., the  
 space between the bore hole and well casing) above and below the  
 sampling interval shall be appropriately sealed to prevent entry of  
 contaminants from the ground surface, entry of contaminants from  
 the unsaturated zone, cross contamination between portions of the  
 zone of saturation, and contamination of samples.

(D) All monitoring wells shall be adequately developed  
 to enable collection of representative ground water samples.

Updated: June 14, 2006

## SUPPLEMENTAL ENVIRONMENTAL PROJECTS (SEPs)

| PROJECT TITLE / OBJECTIVES | PROJECT TRUSTEE | ACL Order | Date Adopted | Resp Party | ACL AMOUNT | SEP AMOUNT | TIME PERIOD | WATER SHED | RB Contact | COMMENTS |
|----------------------------|-----------------|-----------|--------------|------------|------------|------------|-------------|------------|------------|----------|
|----------------------------|-----------------|-----------|--------------|------------|------------|------------|-------------|------------|------------|----------|

## Active SEPs currently tracked by the Regional Board

|  |  |                  |           |  |           |           |        |                            |                |   |
|--|--|------------------|-----------|--|-----------|-----------|--------|----------------------------|----------------|---|
| Regional Marine Monitoring program for the Southern California Bight.    | Southern California Coastal Research Program       | R9-2005-0224     | 8/10/2005 | South Orange County Wastewater Authority   | \$4,500   | \$4,500   | TBD    | Southern California Bight. | Art Coe        | The \$4,500 was paid in full to SCCRFP  |
| Exotic invasive plant species removal project                            | San Elijo Lagoon Conservancy (SELCO)               | No. R9-2005-0237 | 9/14/2005 | JRMC Real Estate, Inc. & City of Escondido | \$225,000 | \$70,000  | TBD    | Escondido Creek            | Frank Melbourn | The \$70,000 was paid in full to the San Elijo Lagoon Conservancy (SELCO).  |
| Invasive Species/Erosion Control Program                                 | Merkel and Associates                              | No. R9-2005-0237 | 9/14/2005 | JRMC Real Estate, Inc. & City of Escondido | \$225,000 | \$155,000 | 6/1/11 | Escondido Creek            | Frank Melbourn | Project includes: 1) by July 2006, field inventory and ranking of channel erosion; 2) by October 2006, implement a demonstration project; and 3) conduct a five-year monitor to evaluate the performance of the demonstration site. JRMC paid the Regional Board \$ 4,200 for future oversight costs. |
| Sediment toxicity source analysis water quality project in Chollas Creek | Southern California Coastal Water Research Project | NA               | 3/9/2005  | City of San Diego                          | NA        | \$260,000 | TBD    | Chollas Creek              | Art Coe        | The project has been started and fieldwork was conducted during three rain events this past winter.   |

SUPPLEMENTAL ENVIRONMENTAL PROJECTS (SEPs)

| PROJECT TITLE / OBJECTIVES | PROJECT TRUSTEE | ACL Order | Date Adopted | Resp Party | ACL AMOUNT | SEP AMOUNT | TIME PERIOD | WATER SHED | RB Contact | COMMENTS |
|----------------------------|-----------------|-----------|--------------|------------|------------|------------|-------------|------------|------------|----------|
|----------------------------|-----------------|-----------|--------------|------------|------------|------------|-------------|------------|------------|----------|

Environmental Fund Accounts Earmarked for a yet to be approved SEP

|  |  |              |           |                   |           |           |     |                           |                   |  |
|--|--|--------------|-----------|-------------------|-----------|-----------|-----|---------------------------|-------------------|--|
| Monitoring sediments and biota in marine coastal waters, bays lagoons and estuaries in the San Diego region. | City of San Diego Metropolitan Wastewater Department | R9-2005-0229 | 9/14/2005 | City of San Diego | \$13,500  | \$28,500  | TBD | marine coastal waters     | Mark Alpert       | The \$28,500 has been deposited in an escrow account with the City and Regional Board as beneficiaries.                  |
| Selection of SEP will come before the Regional Board on June 14, 2006.                                       | Metropolitan Transportation System (MTS)             | R9-2005-0173 | 9/14/2005 | MTS               | \$100,000 | \$50,000  | TBD | San Diego River           | Vicente Rodriguez | The \$50,000 has been deposited into the Cleanup and Abatement Account administered by the State Board.                  |
| Water quality related monitoring in San Diego Bay and Mission Bay.   | City of San Diego Metropolitan Wastewater Department | NA           | 3/9/2005  | City of San Diego | NA        | \$500,000 | TBD | San Diego and Mission Bay | Art Coe           | The \$500,000 has been deposited in a secure interest bearing account with the City and Regional Board as beneficiaries. |
| Water quality related projects within the San Diego River Watershed  | San Diego River Conservancy                          | NA           | 3/9/2005  | City of San Diego | NA        | \$240,000 | TBD | San Diego River           | Art Coe           | The Department of Finance manages this fund.   |



UNITED STATES DEPARTMENT OF COMMERCE  
National Oceanic and Atmospheric Administration  
NATIONAL MARINE FISHERIES SERVICE  
Southwest Region  
501 West Ocean Boulevard, Suite 4200  
Long Beach, California 90802-4213

MAY 11 2006

F/SWR4:RSH

Mr. Ryan Broddrick  
Director  
California Department of Fish and Game  
1416 Ninth Street  
Sacramento, California 95814

Dear Mr. Broddrick:

The Southern California *Caulerpa* Action Team (SCCAT) is a diverse working group established in 2000 following the initial discovery of the invasive aquarium strain of *Caulerpa taxifolia* in two marine systems in southern California. SCCAT consists of federal, state, and municipal agency representatives, non-profit groups, and private industry partners with a common goal of eradicating *Caulerpa taxifolia* from the two known infestations sites in southern California. The Steering Committee of SCCAT is composed of federal and state agencies including NOAA's National Marine Fisheries Service, U.S. Department of Agriculture-Agricultural Research Service, California Department of Fish and Game (CDFG), and the San Diego and Santa Ana Regional Water Quality Control Boards.

On behalf of the SCCAT Steering Committee, I am recommending that CDFG declare the successful eradication of the invasive aquarium strain of *Caulerpa taxifolia* from the two known infestation sites in California: Agua Hedionda Lagoon in Carlsbad and Huntington Harbour in Huntington Beach. SCCAT believes the attached documentation fully supports this recommendation. In accordance with AB 2072 passed in September 2004, it is the responsibility of CDFG to make the final determination as to whether eradication has been accomplished. As such, I am requesting that you act upon this recommendation within 30 days.

In addition, SCCAT recommends CDFG support, to the extent feasible, the following actions:

1. Expand current outreach efforts to areas north of southern California to detect new infestations of *Caulerpa* and to prevent new introductions.
2. Promote the genus level ban for the sale and/or possession of *Caulerpa*, given the invasive growth characteristics of multiple species and difficulty in distinguishing various species of *Caulerpa*.
3. Establish a permanent rapid response fund to react to new infestations of *Caulerpa* or other marine invasives.



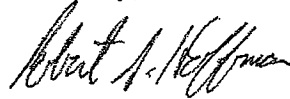


4. Seek increased support for the enforcement of existing state laws banning marine invasive species.
5. Establish regular surveillance of likely *Caulerpa* infestation sites throughout the state.

The response by SCCAT to the discovery of *Caulerpa taxifolia* constitutes the first successful eradication of this species, the first successful eradication of a marine alga, and one of only several successful eradications of a marine species worldwide. The California response to *Caulerpa taxifolia* is being viewed as an international model for marine invasive species response and should be considered as an example to be followed for any future invasive species response effort in the state.

In conclusion, since we are confident of our recommendation, a victory press conference is being planned for July 12, 2006, to formally announce the success of the Agua Hedionda Lagoon and Huntington Harbour *Caulerpa taxifolia* eradication effort. The location of the press conference will be at the Discovery Center adjacent to Agua Hedionda Lagoon. We are hopeful you will be able to participate in this event.

Sincerely,



Robert S. Hoffman  
Acting Assistant Regional Administrator  
for Habitat Conservation

Enclosure

cc: w/o enclosures  
SDRQCB (Chiara Clemente)  
SARQCB (Wanda Cross)  
CDFG (Bill Paznokas)  
USDA (Lars Anderson)