

- NOTES:
1. PID SHOWS UNIT 1 SYSTEM AND SCREEN WASH PUMPS OF BOTH UNITS. UNIT 2 IS IDENTICAL EXCEPT NEW EQUIPMENT NUMBERS BEGINNING WITH "2" ARE CHANGED TO BEGIN WITH "1". THIS PID DOES NOT SHOW ALL THE DETAILS OF THE EXISTING PORTION OF THE SYSTEM.
 2. THIS PID DOES NOT SHOW ALL THE DETAILS OF THE EXISTING PORTION OF THE SYSTEM.
 3. PUMP AND STRAINER CONTROLS WILL BE FROM A LOCAL PANEL.
 4. RAKE, FISH RETURN, AND SCREEN SYSTEMS ARE CONTROLLED BY VENDOR SUPPLIED PANELS.
 5. EXISTING LEVEL TRANSMITTER WILL BE REUSED, TUBING MAY NEED TO BE REPLACED BASED ON FINAL SCREEN CONFIGURATION.
 6. TRAVELING SCREEN MOTORS ARE CONTROLLED BY A NEW LOCAL VENDOR-SUPPLIED PANEL. COMMON TROUBLE ALARM TO MAIN CONTROL PANEL.
 7. ALL SCREENS ARE TO OPERATE AT ALL TIMES.
 8. FINE MESH SCREEN SPRAY VALVES, FLUSHING ARRANGEMENT AND LOCAL INSTRUMENTATION ARE IN VENDOR SCOPE.
 9. FOR STRAINER, LOCAL INSTRUMENTS ARE IN VENDOR SCOPE.
 10. STRAINER WILL BE LOCATED AT LOWER DECK, EL. 1-1 2'-1", IN FRONT OF WCP 1-2.
 11. NEW SCREEN WASH PUMPS 1-WT-MP-003 AND 2-WT-MP-003 WILL BE LOCATED IN CWP 1-2 FOREBAY AND CWP 2-1 FOREBAY RESPECTIVELY.
 12. Y-STRAINER BLOW OFF ROUTED TO INTAKE ON INLET SIDE OF TRAVELING SCREEN.

FOR INFORMATION ONLY. DO NOT USE FOR PROCUREMENT, FABRICATION, OR CONSTRUCTION.

PRELIMINARY PIDS ARE ISSUED FOR PROPOSAL INFORMATION. BECTEL RESERVES THE RIGHT TO MAKE REVISIONS DURING FINAL DESIGN.

BECTEL CONFIDENTIAL. THIS BECTEL POWER CORPORATION BECTEL, CONTAINS INFORMATION OPERATIONAL AND/OR PROPRIETARY TO BECTEL. NO IT OR RELATED COPIES ARE TO BE USED, REPRODUCED OR DISSEMINATED IN ANY FORM BY ANY BECTEL PARTY WITHOUT BECTEL'S PRIOR WRITTEN PERMISSION. ALL RIGHTS RESERVED.

NO.	DATE	REVISIONS	BY	CHK	MECH. SUPV.	CS. SUPV.	PD. SUPV.	PROJ. ENGR.
1	6/27/12	ISSUED FOR ESTIMATE	JEA	RKT	RP	-	-	MJB/BS
2	6/27/12	PRELIMINARY ISSUE	JEA	RKT	RP	-	-	DCD

SCALE: DESIGNED: DRAWN: CHECKED: ENGR.

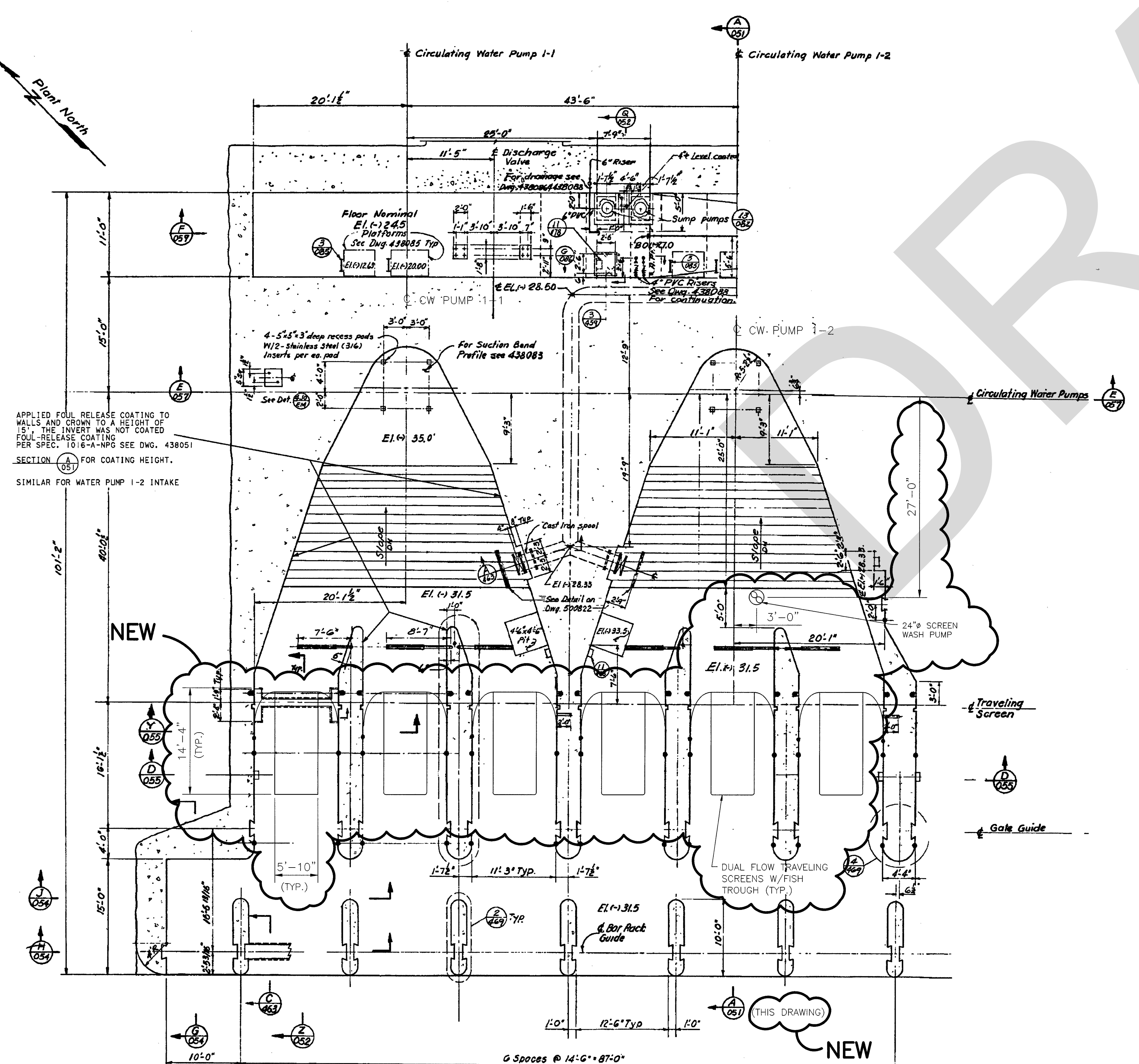
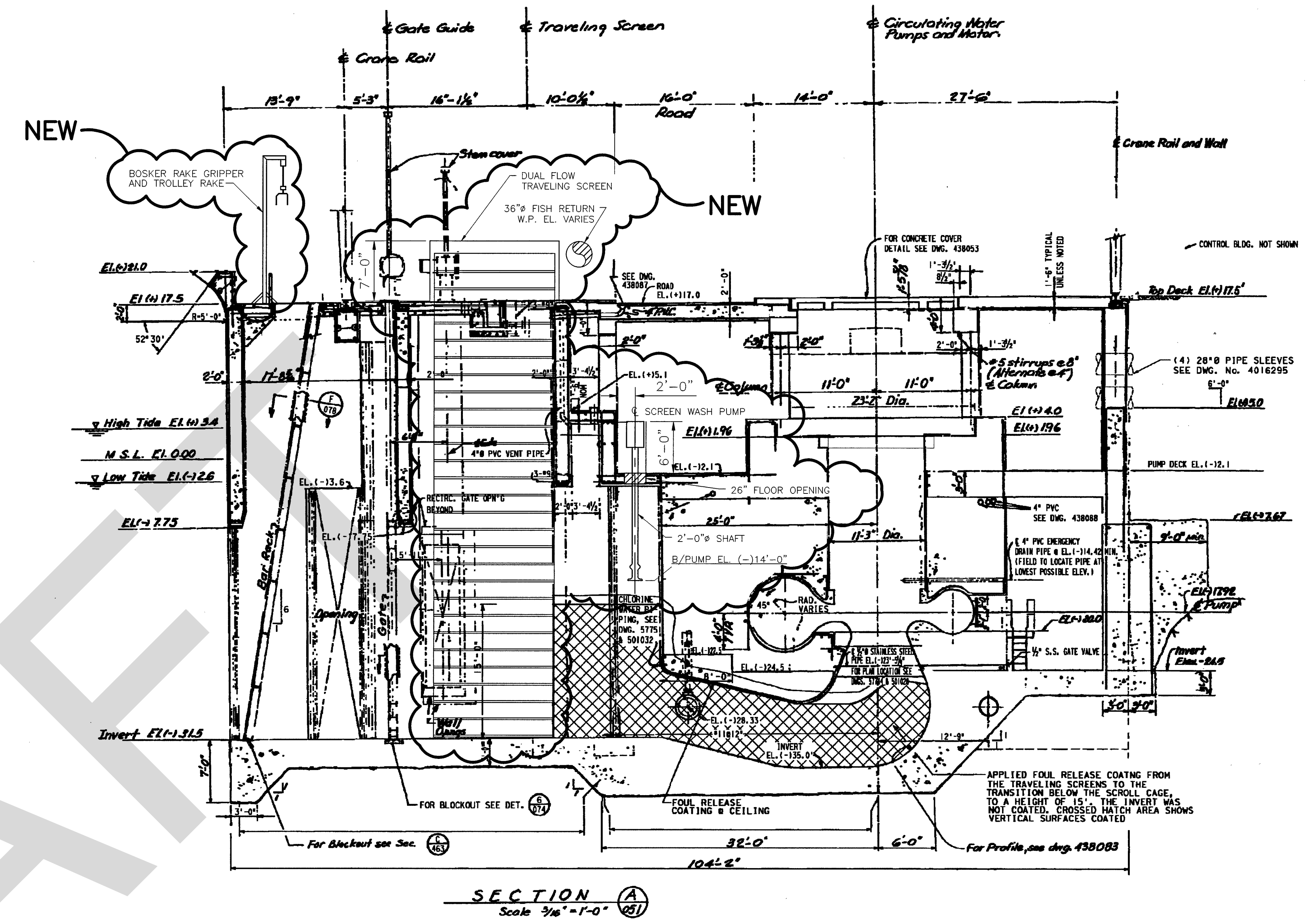
BECTEL
DEDICATED TO SAFETY EXCELLENCE - ZERO ACCIDENTS
FREDERICK, MARYLAND

PACIFIC GAS & ELECTRIC
DIABLO CANYON

PIPING & INSTRUMENT SCHEMATIC
TRAVELING SCREEN WASH
AND FISH RETURN SYSTEM

JOB NO.	DRAWING NO.	REV
25762-110	M6K-WT-00001	B

© Copyright Bechtel Corporation 2005. All rights reserved. Contains confidential information. Bechtel is not responsible for third parties without Bechtel's prior written permission.



REFERENCE(S):
SEE DRAWING 2576-110-P1K-WL-00071

NOTE(S):
SEE DRAWING 2576-110-P1K-WL-00071

FOR INFORMATION ONLY. DO NOT USE FOR PROCUREMENT, FABRICATION, OR CONSTRUCTION.

BECHTEL CONFIDENTIAL © 2015 BECHTEL POWER CORPORATION (BECHTEL) CONTAINS INFORMATION CONFIDENTIAL AND/OR PROPRIETARY TO BECHTEL AND ITS AFFILIATED COMPANIES THAT IS NOT TO BE USED, DISCLOSED, OR REPRODUCED IN ANY FORM BY ANY NON-BECHTEL PARTY WITHOUT BECHTEL'S PRIOR WRITTEN PERMISSION. ALL RIGHTS RESERVED.

06/27/13	ISSUE FOR ESTIMATE	DMH	MAJ	DED	
05/08/13	ISSUE FOR INTERNAL ESTIMATE	DMH	MAJ	DED	
05/05/13	ISSUE FOR PRELIMINARY REVIEW	DMH	MAJ	DED	

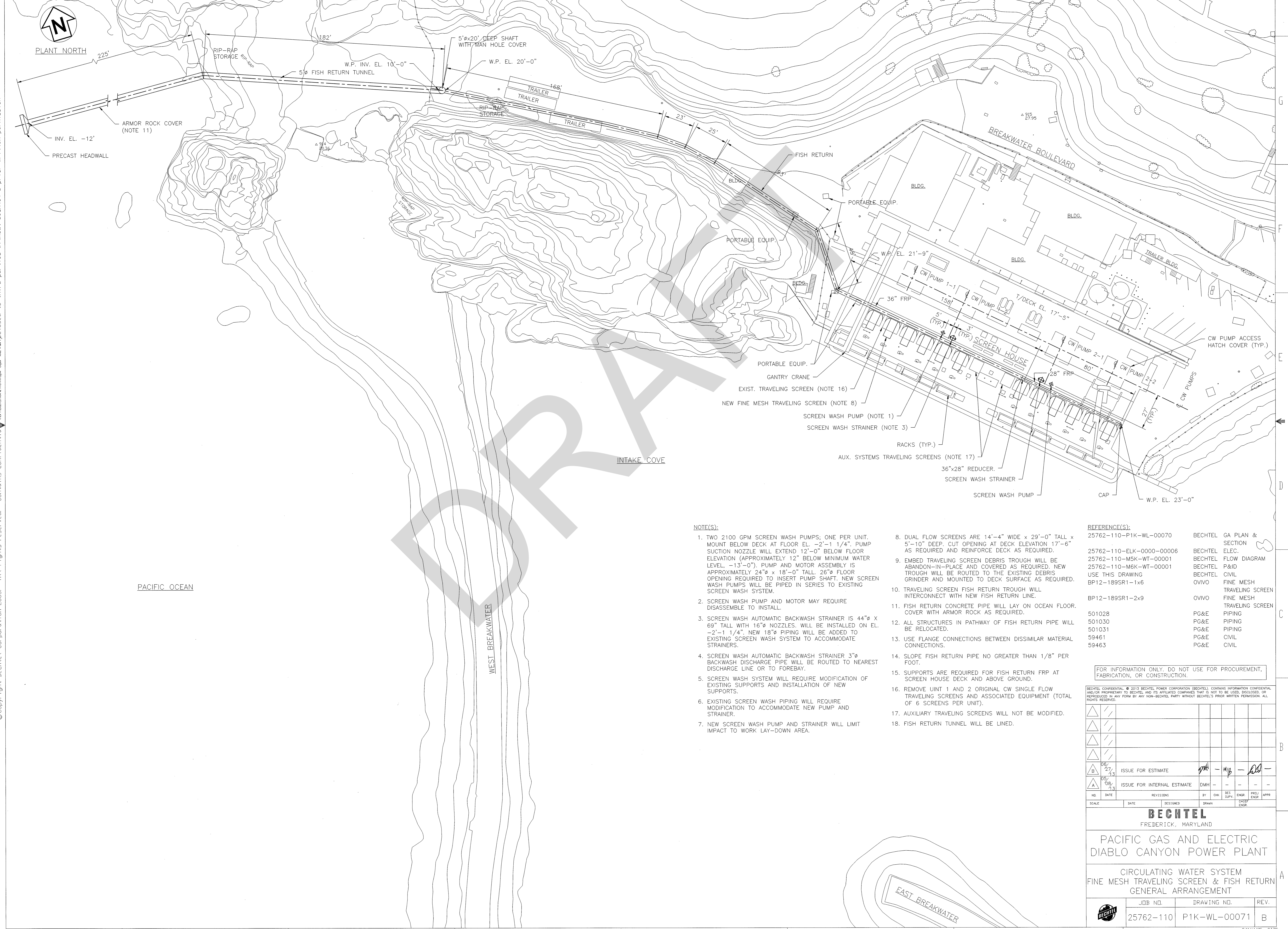
NO.	DATE	REVISIONS	BY	CHK	DES	ENGR	PROJ	APPV
SCALE	DATE	DESIGNED	DRAWN	CHKD	ENGR	ENGR	ENGR	ENGR

BECHTEL
FREDERICK, MARYLAND

PACIFIC GAS AND ELECTRIC
DIABLO CANYON POWER PLANT

CIRCULATING WATER SYSTEM
FINE MESH TRAVELING SCREEN
GENERAL ARRANGEMENT

JOB NO.	DRAWING NO.	REV.
25762-110	P1K-WL-00070	C



© Copyright Bechtel Corporation 2005. All rights reserved. Contains confidential information. To be used for procurement, fabrication, or construction only. Do not use for procurement, fabrication, or construction.

NOTE(S):

1. TWO 2100 GPM SCREEN WASH PUMPS; ONE PER UNIT. MOUNT BELOW DECK AT FLOOR EL. -2'-1 1/4". PUMP SUCTION NOZZLE WILL EXTEND 12'-0" BELOW FLOOR ELEVATION (APPROXIMATELY 12" BELOW MINIMUM WATER LEVEL, -13'-0"). PUMP AND MOTOR ASSEMBLY IS APPROXIMATELY 24"ø x 18'-0" TALL. 26"ø FLOOR OPENING REQUIRED TO INSERT PUMP SHAFT. NEW SCREEN WASH PUMPS WILL BE PIPED IN SERIES TO EXISTING SCREEN WASH SYSTEM.
2. SCREEN WASH PUMP AND MOTOR MAY REQUIRE DISASSEMBLE TO INSTALL.
3. SCREEN WASH AUTOMATIC BACKWASH STRAINER IS 44"ø x 69" TALL WITH 16"ø NOZZLES. WILL BE INSTALLED ON EL. -2'-1 1/4". NEW 18"ø PIPING WILL BE ADDED TO EXISTING SCREEN WASH SYSTEM TO ACCOMMODATE STRAINERS.
4. SCREEN WASH AUTOMATIC BACKWASH STRAINER 3"ø BACKWASH DISCHARGE PIPE WILL BE ROUTED TO NEAREST DISCHARGE LINE OR TO FOREBAY.
5. SCREEN WASH SYSTEM WILL REQUIRE MODIFICATION OF EXISTING SUPPORTS AND INSTALLATION OF NEW SUPPORTS.
6. EXISTING SCREEN WASH PIPING WILL REQUIRE MODIFICATION TO ACCOMMODATE NEW PUMP AND STRAINER.
7. NEW SCREEN WASH PUMP AND STRAINER WILL LIMIT IMPACT TO WORK LAY-DOWN AREA.
8. DUAL FLOW SCREENS ARE 14'-4" WIDE x 29'-0" TALL x 5'-10" DEEP. CUT OPENING AT DECK ELEVATION 17'-6" AS REQUIRED AND REINFORCE DECK AS REQUIRED.
9. EMBED TRAVELING SCREEN DEBRIS TROUGH WILL BE ABANDON-IN-PLACE AND COVERED AS REQUIRED. NEW TROUGH WILL BE ROUTED TO THE EXISTING DEBRIS GRINDER AND MOUNTED TO DECK SURFACE AS REQUIRED.
10. TRAVELING SCREEN FISH RETURN TROUGH WILL INTERCONNECT WITH NEW FISH RETURN LINE.
11. FISH RETURN CONCRETE PIPE WILL LAY ON OCEAN FLOOR. COVER WITH ARMOR ROCK AS REQUIRED.
12. ALL STRUCTURES IN PATHWAY OF FISH RETURN PIPE WILL BE RELOCATED.
13. USE FLANGE CONNECTIONS BETWEEN DISSIMILAR MATERIAL CONNECTIONS.
14. SLOPE FISH RETURN PIPE NO GREATER THAN 1/8" PER FOOT.
15. SUPPORTS ARE REQUIRED FOR FISH RETURN FRP AT SCREEN HOUSE DECK AND ABOVE GROUND.
16. REMOVE UNIT 1 AND 2 ORIGINAL CW SINGLE FLOW TRAVELING SCREENS AND ASSOCIATED EQUIPMENT (TOTAL OF 6 SCREENS PER UNIT).
17. AUXILIARY TRAVELING SCREENS WILL NOT BE MODIFIED.
18. FISH RETURN TUNNEL WILL BE LINED.

REFERENCE(S):

25762-110-P1K-WL-00070	BECHTEL GA PLAN & SECTION
25762-110-ELK-0000-00006	BECHTEL ELEC.
25762-110-M5K-WT-00001	BECHTEL FLOW DIAGRAM
25762-110-M6K-WT-00001	BECHTEL P&ID
USE THIS DRAWING	BECHTEL CIVIL
BP12-189SR1-1x6	OVIVO FINE MESH TRAVELING SCREEN
BP12-189SR1-2x9	OVIVO FINE MESH TRAVELING SCREEN
501028	PG&E PIPING
501030	PG&E PIPING
501031	PG&E PIPING
59461	PG&E CIVIL
59463	PG&E CIVIL

FOR INFORMATION ONLY. DO NOT USE FOR PROCUREMENT, FABRICATION, OR CONSTRUCTION.

BECHTEL CONFIDENTIAL. © 2013 BECHTEL POWER CORPORATION (BECHTEL). CONTAINS INFORMATION CONFIDENTIAL AND/OR PROPRIETARY TO BECHTEL AND ITS AFFILIATED COMPANIES THAT IS NOT TO BE USED, DISCLOSED, OR REPRODUCED IN ANY FORM BY ANY NON-BECHTEL PARTY WITHOUT BECHTEL'S PRIOR WRITTEN PERMISSION. ALL RIGHTS RESERVED.

06/27/13	ISSUE FOR ESTIMATE	DMH	WJB	ED					
05/13/13	ISSUE FOR INTERNAL ESTIMATE								
NO	DATE	REVISIONS	BY	CHK	DES	ENGR	PROJ	APPV	
SCALE	DATE	DESIGNED	DRAWN	CHECKED	ENGR	ENGR	ENGR	ENGR	

BECHTEL
FREDERICK, MARYLAND

**PACIFIC GAS AND ELECTRIC
DIABLO CANYON POWER PLANT**

**CIRCULATING WATER SYSTEM
FINE MESH TRAVELING SCREEN & FISH RETURN
GENERAL ARRANGEMENT**

JOB NO.	DRAWING NO.	REV.
25762-110	P1K-WL-00071	B

JUOTC - DIABLO CANYON

Preliminary Mechanical Equipment List List Fine Mesh Screening

25762-110-M0X-YA-00006

00B	6/24/2013	Issued for Estimate Report	RP	-	RP
00A	5/8/2013	Issued for Estimating	RP	-	RP
Rev	Date	Reason for Revision		Checked	

System Codes

Commodity Codes

WL	Circulating Water	ME	Heat Exchange Component (Cooling Tower, Heat Exchanger)
WO	Sea Water	ML	Liquid-Solid Separation (Traveling Screens, Trash Racks, Automatic Strainer/Filters)
		MP	Pump
		MT	Tank
		PP	Pump - exist plant
		PY	In line piping specialty

NOTES:

1. Commodity Codes shown are Bechtel standard codes. Bechtel Commodity codes have been assigned to existing plant equipment numbers to aid in equipment list sorts.
2. System Codes shown are Bechtel standard codes. Bechtel System Codes have been assigned to existing plant equipment numbers to aid in list sorts.

Preliminary Mechanical Equipment List

JUOTC STUDY FINE MESH OPTION
Diablo Canyon

25762-110-M0X-YA-00006, Revision 00B

Quantity	Bidder Quote to be Used	Unit	Sys Code	Com. Code 1	Seq. No.	New / Existing	Description	Type	Capacity (%) - Per Unit	Drive Motor Size BHP (or kW)	Comments	Rev.
1	Ovivo Proposal BP12 189R1	1	WT	ML	001	New	DUAL FLOW TRAVELING SCREEN WITH FISH CATCHER	Fine mesh (1 mm x 6 mm), 13 foot, variable speed drives (5/10/20/40 fpm)	16.67	15.0	1 f/s thru mesh velocity, fish and debris transition troughs included. Discharge troughs priced by linear foot.	00A
1	Ovivo Proposal BP12 189R1	1	WT	ML	002	New	DUAL FLOW TRAVELING SCREEN WITH FISH CATCHER	Fine mesh (1 mm x 6 mm), 13 foot, variable speed drives (5/10/20/40 fpm)	16.67	15.0	1 f/s thru mesh velocity, fish and debris transition troughs included. Discharge troughs priced by linear foot.	00A
1	Ovivo Proposal BP12 189R1	1	WT	ML	003	New	DUAL FLOW TRAVELING SCREEN WITH FISH CATCHER	Fine mesh (1 mm x 6 mm), 13 foot, variable speed drives (5/10/20/40 fpm)	16.67	15.0	1 f/s thru mesh velocity, fish and debris transition troughs included. Discharge troughs priced by linear foot.	00A
1	Ovivo Proposal BP12 189R1	1	WT	ML	004	New	DUAL FLOW TRAVELING SCREEN WITH FISH CATCHER	Fine mesh (1 mm x 6 mm), 13 foot, variable speed drives (5/10/20/40 fpm)	16.67	15.0	1 f/s thru mesh velocity, fish and debris transition troughs included. Discharge troughs priced by linear foot.	00A
1	Ovivo Proposal BP12 189R1	1	WT	ML	005	New	DUAL FLOW TRAVELING SCREEN WITH FISH CATCHER	Fine mesh (1 mm x 6 mm), 13 foot, variable speed drives (5/10/20/40 fpm)	16.67	15.0	1 f/s thru mesh velocity, fish and debris transition troughs included. Discharge troughs priced by linear foot.	00A
1	Ovivo Proposal BP12 189R1	1	WT	ML	006	New	DUAL FLOW TRAVELING SCREEN WITH FISH CATCHER	Fine mesh (1 mm x 6 mm), 13 foot, variable speed drives (5/10/20/40 fpm)	16.67	15.0	1 f/s thru mesh velocity, fish and debris transition troughs included. Discharge troughs priced by linear foot.	00A
1	N/A	1	WT		7	Existing	ONCE THROUGH SCREEN				Existing to remain as is- Ovivo to supply new control panel (1/17/13 email) to replace existing control panel.	00A
1	N/A	1	WT	PP	1-1	Existing	SCREEN WASH PUMP	vertical 3900 gpm, TDH: 260 feet, variable speed	1 X 100%	350	Continue to use	00A
1	N/A	1	WT	PP	1-2	Existing	SCREEN WASH PUMP	vertical 3900 gpm, TDH: 260 feet, variable speed	1 X 100%	350	Continue to use	00A
1	Estimating	1	WT	MP	003	New	SCREEN WASH PUMP	vertical 2100 gpm, TDH: 260 feet, variable speed	1 X 100%	200	2100 gpm @ ~260 feet using pump eff 65%	00A
1	Estimating	1	WT	PY		New	Pump MP 003 discharge expansion joint	10" rubber with tie rods				
1	Estimating	1	WT	ML	009	New	SCREEN WASH STRAINER	AUTOMATIC BACKWASH	1 X 100%	0.5	0.6mm mesh SP Kinney Model AF strainer or equivalent	00A
1	Estimating	1	WT	PSV	001	New	SCREEN WASH STRAINER SAFETY VALVE	¾" x 1"				00A
1	Ovivo Proposal BP12 189R1	2	WT	ML	001	New	DUAL FLOW TRAVELING SCREEN WITH FISH CATCHER	Fine mesh (1 mm x 6 mm), 13 foot, variable speed drives (5/10/20/40 fpm)	16.67	15.0	1 f/s thru mesh velocity, fish and debris transition troughs included. Discharge troughs priced by linear foot.	00A
1	Ovivo Proposal BP12 189R1	2	WT	ML	002	New	DUAL FLOW TRAVELING SCREEN WITH FISH CATCHER	Fine mesh (1 mm x 6 mm), 13 foot, variable speed drives (5/10/20/40 fpm)	16.67	15.0	1 f/s thru mesh velocity, fish and debris transition troughs included. Discharge troughs priced by linear foot.	00A
1	Ovivo Proposal BP12 189R1	2	WT	ML	003	New	DUAL FLOW TRAVELING SCREEN WITH FISH CATCHER	Fine mesh (1 mm x 6 mm), 13 foot, variable speed drives (5/10/20/40 fpm)	16.67	15.0	1 f/s thru mesh velocity, fish and debris transition troughs included. Discharge troughs priced by linear foot.	00A
1	Ovivo Proposal BP12 189R1	2	WT	ML	004	New	DUAL FLOW TRAVELING SCREEN WITH FISH CATCHER	Fine mesh (1 mm x 6 mm), 13 foot, variable speed drives (5/10/20/40 fpm)	16.67	15.0	1 f/s thru mesh velocity, fish and debris transition troughs included. Discharge troughs priced by linear foot.	00A
1	Ovivo Proposal BP12 189R1	2	WT	ML	005	New	DUAL FLOW TRAVELING SCREEN WITH FISH CATCHER	Fine mesh (1 mm x 6 mm), 13 foot, variable speed drives (5/10/20/40 fpm)	16.67	15.0	1 f/s thru mesh velocity, fish and debris transition troughs included. Discharge troughs priced by linear foot.	00A
1	Ovivo Proposal BP12 189R1	2	WT	ML	006	New	DUAL FLOW TRAVELING SCREEN WITH FISH CATCHER	Fine mesh (1 mm x 6 mm), 13 foot, variable speed drives (5/10/20/40 fpm)	16.67	15.0	1 f/s thru mesh velocity, fish and debris transition troughs included. Discharge troughs priced by linear foot.	00A
1	N/A	2	WT		7	Existing	ONCE THROUGH SCREEN				Existing to remain as is- Ovivo to supply new control panel (1/17/13 email)	00A
1	Estimating	2	WT	PP	2-1	Existing	SCREEN WASH PUMP	vertical 3900 gpm, TDH: 260 feet, variable speed	1 X 100%	350	Continue to use	00A
1	Estimating	2	WT	MP	003	New	SCREEN WASH PUMP	vertical 2100 gpm, TDH: 260 feet, variable speed	1 X 100%	200	2100 gpm @ ~260 feet using pump eff 65%	00A
1	Estimating	1	WT	PY		New	Pump MP 003 discharge expansion joint	10" rubber with tie rods				
1	Estimating	2	WT	ML	009	New	SCREEN WASH STRAINER	AUTOMATIC BACKWASH	1 X 100%	0.5	0.6mm mesh SP Kinney Model AF strainer or equivalent	00A
1	Estimating	2	WT	PSV	001	New	SCREEN WASH STRAINER SAFETY VALVE	¾" x 1"				00A
1	Estimating	1	WT	PY		New	Y-strainer - Spray line to Traveling Screen ML001	6 inch			Duplex stainless steel materials (compatible with sea water)	00B
1	Estimating	1	WT	PY		New	Y-strainer - Spray line to Traveling Screen ML002	6 inch			Duplex stainless steel materials (compatible with sea water)	00B
1	Estimating	1	WT	PY		New	Y-strainer - Spray line to Traveling Screen ML003	6 inch			Duplex stainless steel materials (compatible with sea water)	00B
1	Estimating	1	WT	PY		New	Y-strainer - Spray line to Traveling Screen ML004	6 inch			Duplex stainless steel materials (compatible with sea water)	00B
1	Estimating	1	WT	PY		New	Y-strainer - Spray line to Traveling Screen ML005	6 inch			Duplex stainless steel materials (compatible with sea water)	00B
1	Estimating	1	WT	PY		New	Y-strainer - Spray line to Traveling Screen ML006	6 inch			Duplex stainless steel materials (compatible with sea water)	00B
1	Estimating	2	WT	PY		New	Y-strainer - Spray line to Traveling Screen ML001	6 inch			Duplex stainless steel materials (compatible with sea water)	00B
1	Estimating	2	WT	PY		New	Y-strainer - Spray line to Traveling Screen ML002	6 inch			Duplex stainless steel materials (compatible with sea water)	00B
1	Estimating	2	WT	PY		New	Y-strainer - Spray line to Traveling Screen ML003	6 inch			Duplex stainless steel materials (compatible with sea water)	00B
1	Estimating	2	WT	PY		New	Y-strainer - Spray line to Traveling Screen ML004	6 inch			Duplex stainless steel materials (compatible with sea water)	00B
1	Estimating	2	WT	PY		New	Y-strainer - Spray line to Traveling Screen ML005	6 inch			Duplex stainless steel materials (compatible with sea water)	00B
1	Estimating	2	WT	PY		New	Y-strainer - Spray line to Traveling Screen ML006	6 inch			Duplex stainless steel materials (compatible with sea water)	00B

JUOTC STUDY FINE MESH OPTION

Diablo Canyon Power Plant

Valve List

25762-110-M6X-YA-00006

00B		Issued for Estimate Report	RP	-	RP
00A	5/8/3013	Issued for estimating	RP	-	RP
Rev	Date	Reason for Revision	Originator	Checked	Approved

JUOTC STUDY FINE MESH OPTION
Diablo Canyon Power Plant
Valve List

25762-110-M6X-YA-00006
Rev. 00B

System Codes

WT	Traveling Screen Wash
PP	Personnel Protection

Note:

- 1 System Codes are Bechtel standard codes. Bechtel system codes may be assigned to existing plant equipment numbers to aid in list sorts.

JUOTC STUDY FINE MESH OPTION
Diablo Canyon
Valve List

25762-110-M6X-YA-00006
Rev. 00B

Line Description	Unit	Comm	System	Valve Seq. No.	Suffix	Dia (in)	Valve Type	Act. Type	End Prep.	Valve Material Class	Design Press (psig)	Design Temp (°F)	Service Press (psig)	Service Temp (°F)	Rating	P&ID	Heat Trace (Yes/No)	Remarks	Rev
Screen Wash Pump MP03 discharge	1	PV	WT			10	Wafer check		flange		150	70	90	56.5		25762-11--M6K-WT-00001	No	Super duplex material	00A
Screen Wash Pump MP03 discharge	1	PV	WT			10	Butterfly		flange		150	70	90	56.5		25762-11--M6K-WT-00001	No	Ductile iron, rubber lined, general service, lug type,	00A
Inlet to pump discharge PI 03	1	PV	WT			1	gate		flange		150	70	90	56.5		25762-11--M6K-WT-00001	No	Super duplex material	00A
Inlet to automatic vent	1	PV	WT			2	ball		flange		150	70	90	56.5			No	Super duplex material	00A
Inlet to automatic vent	1	PV	WT			2	AR		flange		150	70	90	56.5			No	Super duplex material	00A
Inlet to Strainer ML09	1	PV	WT			16	Butterfly		flange		150	70	90	56.5		25762-11--M6K-WT-00001	No	Ductile iron, rubber lined, general service, lug type,	00B
Outlet to Strainer ML09	1	PV	WT			16	Butterfly		flange		150	70	90	56.5		25762-11--M6K-WT-00001	No	Ductile iron, rubber lined, general service, lug type,	00B
Strainer ML09 bypass	1	PV	WT			16	Butterfly		flange		150	70	90	56.5		25762-11--M6K-WT-00001	No	Ductile iron, rubber lined, general service, lug type,	00B
To PDIS 006	1	PV	WT			1	globe		flange		150	70	90	56.5		25762-11--M6K-WT-00001	No	Super duplex material	00A
To PDIS 006	1	PV	WT			1	globe		flange		150	70	90	56.5		25762-11--M6K-WT-00001	No	Super duplex material	00A
Strainer waste discharge	1	PV	WT			8	ball	Mtr	flange		150	70	90	56.5		25762-11--M6K-WT-00001	No	Super duplex material	00A
Root connection to PS 008	1	PV	WT			1	gate		flange		150	70	90	56.5		25762-11--M6K-WT-00001	No	Super duplex material	00A
Root connection to PS 009A	1	PV	WT			1	gate		flange		150	70	90	56.5		25762-11--M6K-WT-00001	No	Super duplex material	00A
Root connection to PS 009B	1	PV	WT			1	gate		flange		150	70	90	56.5		25762-11--M6K-WT-00001	No	Super duplex material	00A
Root connection to PS 009C	1	PV	WT			1	gate		flange		150	70	90	56.5		25762-11--M6K-WT-00001	No	Super duplex material	00A
Inlet to PCV 011A	1	PV	WT			6	butterfly		flange		150	70	90	56.5			No	Ductile iron, rubber lined, general service, lug type,	00A

JUOTC STUDY FINE MESH OPTION
Diablo Canyon
Valve List

25762-110-M6X-YA-00006
Rev. 00B

Line Description	Unit	Comm	System	Valve Seq. No.	Suffix	Dia (in)	Valve Type	Act. Type	End Prep.	Valve Material Class	Design Press (psig)	Design Temp (°F)	Service Press (psig)	Service Temp (°F)	Rating	P&ID	Heat Trace (Yes/No)	Remarks	Rev
Y-strainer Screen ML001 blow off	1	PV	WT			2	ball		flange		150	70	90	56.5			No	Super duplex material	00B
Inlet to PCV 011B	1	PV	WT			6	butterfly		flange		150	70	90	56.5			No	Ductile iron, rubber lined, general service, lug type,	00A
Y-strainer Screen ML002 blow off	1	PV	WT			2	ball		flange		150	70	90	56.5			No	Super duplex material	00B
Inlet to PCV 011C	1	PV	WT			6	butterfly		flange		150	70	90	56.5			No	Ductile iron, rubber lined, general service, lug type,	00A
Y-strainer Screen ML003 blow off	1	PV	WT			2	ball		flange		150	70	90	56.5			No	Super duplex material	00B
Inlet to PCV 011D	1	PV	WT			6	butterfly		flange		150	70	90	56.5			No	Ductile iron, rubber lined, general service, lug type,	00A
Y-strainer Screen ML004 blow off	1	PV	WT			2	ball		flange		150	70	90	56.5			No	Super duplex material	00B
Inlet to PCV 011E	1	PV	WT			6	butterfly		flange		150	70	90	56.5			No	Ductile iron, rubber lined, general service, lug type,	00A
Y-strainer Screen ML005 blow off	1	PV	WT			2	ball		flange		150	70	90	56.5			No	Super duplex material	00B
Inlet to PCV 011F	1	PV	WT			6	butterfly		flange		150	70	90	56.5			No	Ductile iron, rubber lined, general service, lug type,	00A
Y-strainer Screen ML006 blow off	1	PV	WT			2	ball		flange		150	70	90	56.5			No	Super duplex material	00B
Root connection to PI 011A	1	PV	WT			1	gate		flange		150	70	90	56.5		25762-11--M6K-WT-00001	No	Super duplex material	00A
Root connection to PI 011B	1	PV	WT			1	gate		flange		150	70	90	56.5		25762-11--M6K-WT-00001	No	Super duplex material	00A
Root connection to PI 011C	1	PV	WT			1	gate		flange		150	70	90	56.5		25762-11--M6K-WT-00001	No	Super duplex material	00A
Root connection to PI 011D	1	PV	WT			1	gate		flange		150	70	90	56.5		25762-11--M6K-WT-00001	No	Super duplex material	00A
Root connection to PI 011E	1	PV	WT			1	gate		flange		150	70	90	56.5		25762-11--M6K-WT-00001	No	Super duplex material	00A
Root connection to PI 011F	1	PV	WT			1	gate		flange		150	70	90	56.5		25762-11--M6K-WT-00001	No	Super duplex material	00A

JUOTC STUDY FINE MESH OPTION
Diablo Canyon
Valve List

25762-110-M6X-YA-00006
Rev. 00B

Line Description	Unit	Comm	System	Valve Seq. No.	Suffix	Dia (in)	Valve Type	Act. Type	End Prep.	Valve Material Class	Design Press (psig)	Design Temp (°F)	Service Press (psig)	Service Temp (°F)	Rating	P&ID	Heat Trace (Yes/No)	Remarks	Rev
Root connection to PI 012F	1	PV	WT			1	gate		flange		150	70	90	56.5		25762-11--M6K-WT-00001	No	Super duplex material	00A
Screen Wash Pump MP03 discharge	2	PV	WT			10	Wafer check		flange		150	70	90	56.5		25762-11--M6K-WT-00001	No	Super duplex material	00A
Screen Wash Pump MP03 discharge	2	PV	WT			10	Butterfly		flange		150	70	90	56.5		25762-11--M6K-WT-00001	No	Ductile iron, rubber lined, general service, lug type,	00A
Inlet to pump discharge PI 03	2	PV	WT			1	gate		flange		150	70	90	56.5		25762-11--M6K-WT-00001	No	Super duplex material	00A
Inlet to automatic vent	2	PV	WT			2	ball		flange		150	70	90	56.5			No	Super duplex material	00A
Inlet to automatic vent	2	PV	WT			2	AR		flange		150	70	90	56.5			No	Super duplex material	00A
Inlet to Strainer ML09	2	PV	WT			16	Butterfly		flange		150	70	90	56.5		25762-11--M6K-WT-00001	No	Ductile iron, rubber lined, general service, lug type,	00B
Outlet to Strainer ML09	2	PV	WT			16	Butterfly		flange		150	70	90	56.5		25762-11--M6K-WT-00001	No	Ductile iron, rubber lined, general service, lug type,	00B
Strainer ML09 bypass	2	PV	WT			16	Butterfly		flange		150	70	90	56.5		25762-11--M6K-WT-00001	No	Ductile iron, rubber lined, general service, lug type,	00B
To PDIS 006	2	PV	WT			1	globe		flange		150	70	90	56.5		25762-11--M6K-WT-00001	No	Super duplex material	00A
To PDIS 006	2	PV	WT			1	globe		flange		150	70	90	56.5		25762-11--M6K-WT-00001	No	Super duplex material	00A
Strainer waste discharge	2	PV	WT			8	ball	Mtr	flange		150	70	90	56.5		25762-11--M6K-WT-00001	No	Super duplex material	00A
Root connection to PS 008	2	PV	WT			1	gate		flange		150	70	90	56.5		25762-11--M6K-WT-00001	No	Super duplex material	00A
Root connection to PS 009A	2	PV	WT			1	gate		flange		150	70	90	56.5		25762-11--M6K-WT-00001	No	Super duplex material	00A
Root connection to PS 009B	2	PV	WT			1	gate		flange		150	70	90	56.5		25762-11--M6K-WT-00001	No	Super duplex material	00A
Root connection to PS 009C	2	PV	WT			1	gate		flange		150	70	90	56.5		25762-11--M6K-WT-00001	No	Super duplex material	00A

JUOTC STUDY FINE MESH OPTION
Diablo Canyon
Valve List

25762-110-M6X-YA-00006
Rev. 00B

Line Description	Unit	Comm	System	Valve Seq. No.	Suffix	Dia (in)	Valve Type	Act. Type	End Prep.	Valve Material Class	Design Press (psig)	Design Temp (°F)	Service Press (psig)	Service Temp (°F)	Rating	P&ID	Heat Trace (Yes/No)	Remarks	Rev
Inlet to PCV 011A	2	PV	WT			6	butterfly		flange		150	70	90	56.5			No	Ductile iron, rubber lined, general service, lug type,	00A
Y-strainer Screen ML001 blow off	2	PV	WT			2	ball		flange		150	70	90	56.5			No	Super duplex material	00B
Inlet to PCV 011B	2	PV	WT			6	butterfly		flange		150	70	90	56.5			No	Ductile iron, rubber lined, general service, lug type,	00A
Y-strainer Screen ML002 blow off	2	PV	WT			2	ball		flange		150	70	90	56.5			No	Super duplex material	00B
Inlet to PCV 011C	2	PV	WT			6	butterfly		flange		150	70	90	56.5			No	Ductile iron, rubber lined, general service, lug type,	00A
Y-strainer Screen ML003 blow off	2	PV	WT			2	ball		flange		150	70	90	56.5			No	Super duplex material	00B
Inlet to PCV 011D	2	PV	WT			6	butterfly		flange		150	70	90	56.5			No	Ductile iron, rubber lined, general service, lug type,	00A
Y-strainer Screen ML004 blow off	2	PV	WT			2	ball		flange		150	70	90	56.5			No	Super duplex material	00B
Inlet to PCV 011E	2	PV	WT			6	butterfly		flange		150	70	90	56.5			No	Ductile iron, rubber lined, general service, lug type,	00A
Y-strainer Screen ML005 blow off	2	PV	WT			2	ball		flange		150	70	90	56.5			No	Super duplex material	00B
Inlet to PCV 011F	2	PV	WT			6	butterfly		flange		150	70	90	56.5			No	Ductile iron, rubber lined, general service, lug type,	00A
Y-strainer Screen ML006 blow off	2	PV	WT			2	ball		flange		150	70	90	56.5			No	Super duplex material	00B
Root connection to PI 011A	2	PV	WT			1	gate		flange		150	70	90	56.5		25762-11--M6K-WT-00001	No	Super duplex material	00A
Root connection to PI 011B	2	PV	WT			1	gate		flange		150	70	90	56.5		25762-11--M6K-WT-00001	No	Super duplex material	00A
Root connection to PI 011C	2	PV	WT			1	gate		flange		150	70	90	56.5		25762-11--M6K-WT-00001	No	Super duplex material	00A
Root connection to PI 011D	2	PV	WT			1	gate		flange		150	70	90	56.5		25762-11--M6K-WT-00001	No	Super duplex material	00A
Root connection to PI 011E	2	PV	WT			1	gate		flange		150	70	90	56.5		25762-11--M6K-WT-00001	No	Super duplex material	00A

JUOTC STUDY FINE MESH OPTION
 Diablo Canyon
 Valve List

25762-110-M6X-YA-00006
 Rev. 00B

Line Description	Unit	Comm	System	Valve Seq. No.	Suffix	Dia (in)	Valve Type	Act. Type	End Prep.	Valve Material Class	Design Press (psig)	Design Temp (°F)	Service Press (psig)	Service Temp (°F)	Rating	P&ID	Heat Trace (Yes/No)	Remarks	Rev	
Root connection to PI 011F	2	PV	WT			1	gate		flange		150	70	90	56.5		25762-11--M6K-WT-00001	No	Super duplex material	00A	

DRAFT