

**STATE WATER RESOURCES CONTROL BOARD
BOARD MEETING SESSION - DIVISION OF WATER QUALITY
MARCH 20, 2012**

ITEM 4

SUBJECT

CONSIDERATION OF A PROPOSED RESOLUTION APPROVING AN EXCEPTION TO THE CALIFORNIA OCEAN PLAN FOR SELECTED DISCHARGES INTO AREAS OF SPECIAL BIOLOGICAL SIGNIFICANCE, INCLUDING SPECIAL PROTECTIONS TO PROTECT BENEFICIAL USES, AND APPROVING A PROGRAM ENVIRONMENTAL IMPACT REPORT

DISCUSSION

The State Water Resources Control Board (State Water Board), under [Resolution No. 74-28](#), designated certain Areas of Special Biological Significance (ASBS) to be incorporated into water quality control plans for the control of wastes discharged to ocean waters. To date, 34 coastal and offshore island sites have been designated ASBS.

According to the Public Resources Code, all ASBS are designated as a subset of state water quality protection areas and require special protection as determined by the State Water Board pursuant to the Ocean Plan, and the Water Quality Control Plan for Control of Temperature in the Coastal and Interstate Waters and Enclosed Bays and Estuaries of California (Thermal Plan). In state water quality protection areas, waste discharges must be prohibited or limited by special conditions, in accordance with the Porter-Cologne Water Quality Control Act, California Water Code §13000 et seq., and implementing regulations, including the California Ocean Plan (Ocean Plan) and Thermal Plan.

Since 1983, the Ocean Plan has prohibited waste discharges to ASBS. Similar to previous versions of the Ocean Plan, the 2009 Ocean Plan states: "Waste shall not be discharged to areas designated as being of special biological significance. Discharges shall be located a sufficient distance from such designated areas to assure maintenance of natural water quality conditions in these areas." Section III (J)(1) of the 2009 Ocean Plan states: "The State Board may, in compliance with the California Environmental Quality Act, subsequent to a public hearing, and with the concurrence of the Environmental Protection Agency, grant exceptions where the Board determines: a. The exception will not compromise protection of ocean waters for beneficial uses, and, b. The public interest will be served."

A 2003 survey of ASBS documented 1,658 outfalls, primarily storm water and nonpoint sources discharging to ASBS. On October 18, 2004, the State Water Board staff notified applicants to cease storm water and nonpoint source waste discharges into ASBS or to request an exception under the Ocean Plan. The State Water Board has received 27 applications from nonpoint source dischargers and National Pollutant Discharge Elimination System (NPDES) permitted storm water dischargers for an exception to the Ocean Plan prohibition against waste discharges to ASBS.

POLICY ISSUE

The California Ocean Plan allows the State Water Board to grant exceptions to its provisions as long as the public interest will be served and beneficial uses are protected. Stringent terms, prohibitions, and special conditions have been proposed by State Water Board staff, in order to provide Special Protections for marine aquatic life and natural water quality in ASBS. These Special Protections are proposed for adoption by the State Water Board as part of an Ocean Plan Exception. The requirements in the proposed Special Protections may be summarized generally to eliminate dry weather runoff, ensure that wet weather runoff does not alter natural water quality in the ASBS, and ensure that adequate monitoring be conducted to determine if natural water quality and the marine life beneficial use are protected.

The proposed Special Protections have been drafted to fulfill the state mandate for protection of water quality in ASBS and to address the requirements identified in the Ocean Plan. The State Water Board staff prepared and circulated a Program Environmental Impact Report (PEIR) for the General Exception to the California Ocean Plan Waste Discharge Prohibition, for Selected Discharges into ASBS, including Special Protections for Beneficial Uses on January 14, 2011. The comment period for the proposed General Exception was extended to end on May 20, 2011, and the Public Hearing was held on May 18, 2011. The Special Protections were considered by the State Water Board at the October 18, 2011 meeting. The Special Protections were not adopted at that meeting, but staff was directed to review and edit the response to comments, make clarifying edits to the Special Protections as needed, and bring the Special Protections back to the Board in early 2012.

The PEIR provides four alternatives: (1) no action, (2) amendments to the Ocean Plan, (3) an individual exception process for each of the 27 applicants, and (4) a General Exception for the 27 applicants (preferred alternative).

If the General Exception is not granted, the applicants will be prohibited from discharging storm water runoff into ASBS and subject to immediate enforcement action. In the short term this may result in either chronic noncompliance, with associated penalties, or, if discharges are curtailed, flooding may occur. Neither of these situations is in the public interest. In the long term, the applicants may be forced to divert all storm water runoff outside of ASBS for discharge. This approach would be very expensive and may also pose a threat to the marine environment.

The implementation of the General Exception and the associated terms and conditions in the Special Protections will result in improved water quality in the waters of the State's ASBS and better protection of the marine life beneficial uses of the ASBS. Specific projects employed to implement Special Protections may have some adverse impacts to the environment, but these impacts are generally expected to be limited and short-term or may be mitigated through design and scheduling.

Based on the whole record, including the applications, the Draft PEIR, comments, and responses, State Water Board staff recommends that there is no substantial evidence that approval of the General Exception will have a significant effect on the environment because of the terms, special conditions, and prohibitions that comprise the Special Protections in this Resolution. The Draft PEIR reflects the State Water Board staff's independent judgment and analysis.

FISCAL IMPACT

State Water Board staff, using existing personnel resources, would be involved in implementation of the General Exception and in the review and approval of monitoring program. An existing Division of Financial Assistance Prop 84 grant funded project has already been initiated to ensure statewide consistency for ASBS regional monitoring and BMP effectiveness. Existing Regional Water Board staff would be responsible for implementing the General Exception, primarily through Storm Water NPDES Permits, but also in a few isolated cases by developing waste discharge requirements or waivers. No additional staff resources or contract funds are anticipated.

REGIONAL BOARD IMPACT

Yes. All Coastal Regions (1,2,3,4,8,9).

STAFF RECOMMENDATION

Staff recommends adoption of the program environmental impact report and alternative four, the General Exception, because it is in the public interest and it will protect beneficial uses. Staff further recommends that during the next triennial review, the General Exception should be evaluated, and those aspects of the General Exception that are successfully protecting beneficial uses may then be incorporated in a subsequent Ocean Plan amendment to address storm runoff into ASBS.

State Water Board action on this item will assist the Water Boards in reaching Goals 4 and 6 of the Strategic Plan Update: 2008-2012, to comprehensively address water quality protection and restoration, and to enhance consistency across the Water Boards. In particular, approval of this item will assist in fulfilling Objective/Actions 1.2.5 to develop a stormwater monitoring strategy, 1.3.3 to implement pilot programs to protect coastal waters, and 6.2.1 re-issue the statewide Phase II MS4 permit. The exception supports the Phase II MS4, Caltrans, and General Industrial permit renewals, allowing coverage for permittees adjacent to ASBS (see page 2 of Appendix 1 to the Strategic Plan).

DRAFT

STATE WATER RESOURCES CONTROL BOARD RESOLUTION NO. 2012-

APPROVING EXCEPTIONS TO THE CALIFORNIA OCEAN PLAN FOR SELECTED DISCHARGES INTO AREAS OF SPECIAL BIOLOGICAL SIGNIFICANCE, INCLUDING SPECIAL PROTECTIONS FOR BENEFICIAL USES, AND CERTIFYING A PROGRAM ENVIRONMENTAL IMPACT REPORT

WHEREAS:

1. The State Water Resources Control Board (State Water Board) adopted the California Ocean Plan (Ocean Plan) on July 6, 1972 and revised the Ocean Plan in 1978, 1983, 1988, 1990, 1997, 2000, 2005, and 2009.
2. The Ocean Plan prohibits the discharge of waste to designated Areas of Special Biological Significance (ASBS).
3. ASBS are designated by the State Water Board as ocean areas requiring protection of species or biological communities to the extent that alteration of natural water quality is undesirable.
4. Under the Marine Managed Areas Improvement Act, all ASBS are designated as a subset of state water quality protection areas and require special protection as determined by the State Water Board pursuant to the Ocean Plan and the Water Quality Control Plan for Control of Temperature in the Coastal and Interstate Waters and Enclosed Bays and Estuaries of California (Thermal Plan).
5. In state water quality protection areas, waste discharges must be prohibited or limited by special conditions, in accordance with the Porter-Cologne Water Quality Control Act, California Water Code §13000 et seq., and implementing regulations, including the Ocean Plan and Thermal Plan.
6. The Ocean Plan authorizes the State Water Board to grant an exception to Ocean Plan provisions where the board determines that the exception will not compromise protection of ocean waters for beneficial uses and the public interest will be served.
7. On October 18, 2004, the State Water Board notified a number of parties that they must cease the discharge of storm water and nonpoint source waste into ASBS or request an exception to the Ocean Plan.
8. The State Water Board has now received 27 applications for an exception to the Ocean Plan prohibition against waste discharges into an ASBS. The applicants, who are listed in Attachment A to this resolution, discharge storm water and nonpoint source waste into ASBS.
9. The State Water Board finds that granting the requested exceptions will not compromise protection of ocean waters for beneficial uses, provided that the applicants comply with the prohibitions and special conditions that comprise the Special Protections contained in this resolution. The prohibitions and special conditions in the Special Protections, contained in Attachment B to this resolution, are intended to ensure that storm water

DRAFT

and nonpoint source discharges are controlled to protect the beneficial uses of the affected ASBS, including marine aquatic life and habitat, and to maintain natural water quality within ASBS. The Special Protections are also intended to maintain the natural hydrologic cycle and coastal ecology by allowing the flow of clean precipitation runoff into the ocean, while preserving coastal slope stability and preventing anthropogenic erosion.

10. The State Water Board finds that granting the requested exceptions is in the public interest because the various discharges are essential for flood control, slope stability, erosion prevention, maintenance of the natural hydrologic cycle between terrestrial and marine ecosystems, public health and safety, public recreation and coastal access, commercial and recreational fishing, navigation, and essential military operations (national security).
11. The State Water Board staff conducted scoping meetings on August 1, 8, and 15, 2006. The comment period for CEQA scoping closed August 15, 2006. The State Water Board heard a status report on ASBS at the April 1, 2008 meeting.
12. The State Water Board staff prepared and circulated a Program Environmental Impact Report for the proposed exceptions, in accordance with the California Environmental Quality Act (CEQA) and implementing regulations.
13. The State Water Board held a public hearing on May 18, 2011, to receive comments on the proposed exceptions and the Program Environmental Impact Report. The written comment period ended on May 20, 2011. The State Water Board staff has considered the comments and prepared written response. The State Water Board finds, based on the whole record, including the applications, Draft Program Environmental Impact Report, comments, and responses, that there is no substantial evidence that approval of the exceptions will have a significant effect on the environment because of the terms and conditions incorporated into the project. The Program Environmental Impact Report reflects the State Water Board's independent judgment and analysis.
14. Granting the exceptions is consistent with federal and state antidegradation policies, in 40 C.F.R. §131.12 and [State Water Board Resolution No. 68-16](#), respectively. The terms, special conditions, and prohibitions that comprise these Special Protections will not authorize a lowering of water quality, but rather will improve water quality conditions in the affected ASBS.
15. This resolution only grants an exception from the Ocean Plan prohibition against waste discharges into ASBS to the applicants listed in Attachment A. It does not authorize waste discharges to state waters. In order to legally discharge waste into an ASBS, the applicants must have both coverage under this resolution and an appropriate authorization to discharge. Authorization to discharge for point source waste discharges to navigable waters consists of coverage under the National Pollutant Discharge Elimination System (NPDES) permit program. Nonpoint source discharges of waste must be regulated under waste discharge requirements, a conditional waiver, or a conditional prohibition.

DRAFT

16. The exceptions will be reviewed during the next triennial review of the Ocean Plan. If the State Water Board finds cause to revoke or re-open the exceptions, the board may do so during the triennial review or at any other time. During the next triennial review period staff will also evaluate those aspects of the exception that are successfully protecting beneficial uses, to make recommendations on a potential Ocean Plan amendment to address storm runoff into ASBS.
17. The State Water Board's record of proceedings in this matter is located at 1001 I Street, Sacramento, California, 95814 and the custodian is the Division of Water Quality.

THEREFORE BE IT RESOLVED THAT:

The State Water Board:

1. The State Water Board certifies that the [Final EIR](#) has been completed in compliance with CEQA. The State Water Board has reviewed and considered the information contained in these documents, which reflect the State Water Board's independent judgment and analysis.
2. Approves the exceptions to the Ocean Plan prohibition against waste discharges to ASBS for discharges of storm water and nonpoint source waste by the applicants listed in Attachment A to this resolution provided that:
 - a. The discharges are covered under an appropriate authorization to discharge waste to the ASBS, such as an NPDES permit and/or waste discharge requirements;
 - b. The authorization incorporates all of the Special Protections, contained in Attachment B to this resolution, which are applicable to the discharge; and
 - c. Only storm water and nonpoint source waste discharges by the applicants listed in Attachment A to this resolution are covered by this resolution. All other waste discharges to ASBS are prohibited, unless they are covered by a separate, applicable Ocean Plan exception.
3. Authorizes the Executive Director or designee to file the Notice of Determination with the Governor's Office of Planning and Research.
4. Authorizes the Executive Director or designee to transmit the exceptions to the United States Environmental Agency (U.S. EPA) for concurrence.
5. Directs staff to consider development of, and make recommendations for, an Ocean Plan amendment to address storm runoff into ASBS, during the next triennial review period.

CERTIFICATION

The undersigned Clerk to the Board does hereby certify that the foregoing is a full, true, and correct copy of a resolution duly and regularly adopted at a meeting of the State Water Resources Control Board held on March 20, 2012.

Jeanine Townsend
Clerk to the Board

Attachment A – Applicants

Applicant	ASBS
Carmel by the Sea, City of	Carmel Bay
Connolly-Pacific Company	Southeast Santa Catalina Island
Department of Parks and Recreation	Redwoods National Park, Trinidad Head, King Range, Jughandle Cove, Gerstle Cove, James V. Fitzgerald, Año Nuevo, Carmel Bay, Point Lobos, Julia Pfeiffer Burns, Laguna Point to Latigo Point, Irvine Coast
Department of Transportation (CalTrans)	Redwoods National Park, Saunders Reef, James V. Fitzgerald, Año Nuevo, Carmel Bay, Point Lobos, Julia Pfeiffer Burns, Salmon Creek Coast, Laguna Point to Latigo Point, Irvine Coast
Humboldt County	King Range
Humboldt Bay Harbor District	King Range
Irvine Company	Irvine Coast
Laguna Beach, City of	Heisler Park
Los Angeles County and Los Angeles County Flood Control District	Laguna Point to Latigo Point
Malibu, City of	Laguna Point to Latigo Point
Marin County	Duxbury Reef
Monterey, City of	Pacific Grove
Monterey, County of	Carmel Bay
Newport Beach, City of, and on behalf of the Pelican Point Homeowners	Robert E. Badham And Irvine Coast
Pacific Grove, City of	Pacific Grove
Pebble Beach Company, and on behalf of the Pebble Beach Stillwater Yacht Club	Carmel Bay
San Diego, City of	La Jolla
San Mateo County	James V. Fitzgerald
Santa Catalina Island Company, and on behalf of the Santa Catalina Island Conservancy	Northwest Santa Catalina Island And Western Santa Catalina Island
Sea Ranch Association	Del Mar Landing
Trinidad, City of	Trinidad Head
Trinidad Rancheria	Trinidad Head
U.S. Dept. of Interior, Point Reyes National Seashore	Point Reyes Headlands, Duxbury Reef
U.S. Dept. of Interior, Redwoods National and State Park	Redwoods National Park
U.S. Dept. of Defense, Air Force	James V. Fitzgerald
U.S. Dept. of Defense, Navy	San Nicolas Island & Begg Rock
U.S. Dept. of Defense, Navy	San Clemente Island

Attachment B - Special Protections for Areas of Special Biological Significance, Governing Point Source Discharges of Storm Water and Nonpoint Source Waste Discharges

I. PROVISIONS FOR POINT SOURCE DISCHARGES OF STORM WATER AND NONPOINT SOURCE WASTE DISCHARGES

The following terms, prohibitions, and special conditions (hereafter collectively referred to as special conditions) are established as limitations on point source storm water and nonpoint source discharges. These special conditions provide Special Protections for marine aquatic life and natural water quality in Areas of Special Biological Significance (ASBS), as required for State Water Quality Protection Areas pursuant to California Public Resources Code Sections 36700(f) and 36710(f). These Special Protections are adopted by the State Water Board as part of the California Ocean Plan (Ocean Plan) General Exception.

The special conditions are organized by category of discharge. The State Water Resources Control Board (State Water Board) and Regional Water Quality Control Boards (Regional Water Boards) will determine categories and the means of regulation for those categories [e.g., Point Source Storm Water National Pollutant Discharge Elimination System (NPDES) or Nonpoint Source].

A. PERMITTED POINT SOURCE DISCHARGES OF STORM WATER

1. General Provisions for Permitted Point Source Discharges of Storm Water

- a. Existing storm water discharges into an ASBS are allowed only under the following conditions:
 - (1) The discharges are authorized by an NPDES permit issued by the State Water Board or Regional Water Board;
 - (2) The discharges comply with all of the applicable terms, prohibitions, and special conditions contained in these Special Protections; and
 - (3) The discharges:
 - (i) Are essential for flood control or slope stability, including roof, landscape, road, and parking lot drainage;
 - (ii) Are designed to prevent soil erosion;
 - (iii) Occur only during wet weather;
 - (iv) Are composed of only storm water runoff.
- b. Discharges composed of storm water runoff shall not alter natural ocean water quality in an ASBS.

- c. The discharge of trash is prohibited.
- d. Only discharges from existing storm water outfalls are allowed. Any proposed or new storm water runoff discharge shall be routed to existing storm water discharge outfalls and shall not result in any new contribution of waste to an ASBS (i.e., no additional pollutant loading). "Existing storm water outfalls" are those that were constructed or under construction prior to January 1, 2005. "New contribution of waste" is defined as any addition of waste beyond what would have occurred as of January 1, 2005. A change to an existing storm water outfall, in terms of re-location or alteration, in order to comply with these special conditions, is allowed and does not constitute a new discharge.
- e. Non-storm water discharges are prohibited except as provided below:
 - (1) The term "non-storm water discharges" means any waste discharges from a municipal separate storm sewer system (MS4) or other NPDES permitted storm drain system to an ASBS that are not composed entirely of storm water.
 - (2) The following non-storm water discharges are allowed, provided that the discharges are essential for emergency response purposes, structural stability, slope stability or occur naturally:
 - (i) Discharges associated with emergency fire fighting operations.
 - (ii) Foundation and footing drains.
 - (iii) Water from crawl space or basement pumps.
 - (iv) Hillside dewatering.
 - (v) Naturally occurring groundwater seepage via a storm drain.
 - (vi) Non-anthropogenic flows from a naturally occurring stream via a culvert or storm drain, as long as there are no contributions of anthropogenic runoff.
 - (3) Authorized non-storm water discharges shall not cause or contribute to a violation of the water quality objectives in Chapter II of the Ocean Plan nor alter natural ocean water quality in an ASBS.

2. Compliance Plans for Inclusion in Storm Water Management Plans (SWMP) and Storm Water Pollution Prevention Plans (SWPPP).

The discharger shall specifically address the prohibition of non-storm water runoff and the requirement to maintain natural water quality for storm water discharges to an ASBS in an ASBS Compliance Plan to be included in its SWMP or a SWPPP, as appropriate to permit type. If a statewide permit includes a SWMP, then the discharger shall prepare a stand-alone compliance plan for ASBS discharges. The ASBS Compliance Plan is subject to approval by the Executive Director of the State Water Board (statewide permits) or Executive Officer of the Regional Water Board (for permits issued by Regional Water Boards).

- a. The Compliance Plan shall include a map of surface drainage of storm water runoff, showing areas of sheet runoff, prioritize discharges, and describe any structural Best Management Practices (BMPs) already employed and/or BMPs to be employed in the future. Priority discharges are those that pose the greatest water quality threat and which are identified to require installation of structural BMPs. The map shall also show the storm water conveyances in relation to other features such as service areas, sewage conveyances and treatment facilities, landslides, areas prone to erosion, and waste and hazardous material storage areas, if applicable. The SWMP or SWPPP shall also include a procedure for updating the map and plan when changes are made to the storm water conveyance facilities.
- b. The ASBS Compliance Plan shall describe the measures by which all non-authorized non-storm water runoff (e.g., dry weather flows) has been eliminated, how these measures will be maintained over time, and how these measures are monitored and documented.
- c. For Municipal Separate Storm Sewer System (MS4s), the ASBS Compliance Plan shall require minimum inspection frequencies as follows:
 - (1) The minimum inspection frequency for construction sites shall be weekly during rainy season;
 - (2) The minimum inspection frequency for industrial facilities shall be monthly during the rainy season;
 - (3) The minimum inspection frequency for commercial facilities (e.g., restaurants) shall be twice during the rainy season; and
 - (4) Storm water outfall drains equal to or greater than 18 inches (457 mm) in diameter or width shall be inspected once prior to the beginning of the rainy season and once during the rainy season and maintained to remove trash and other anthropogenic debris.
- d. The ASBS Compliance Plan shall address storm water discharges (wet weather flows) and, in particular, describe how pollutant reductions in storm water runoff, that are necessary to comply with these special conditions, will be achieved through BMPs. Structural BMPs need not be installed if the discharger can document to the satisfaction of the State Water Board Executive Director (statewide permits) or Regional Water Board Executive Officer (Regional Water Board permits) that such installation would pose a threat to health or safety. BMPs to control storm water runoff discharges (at the end-of-pipe) during a design storm shall be designed to achieve on average the following target levels:
 - (1) Table B Instantaneous Maximum Water Quality Objectives in Chapter II of the Ocean Plan; or
 - (2) A 90% reduction in pollutant loading during storm events, for the applicant's total discharges. The baseline for the reduction is the effective date of the Exception. The baseline for these determinations is the effective date of the Exception, and the reductions must be achieved and documented within four (4) years of the effective date.

- e. The ASBS Compliance Plan shall address erosion control and the prevention of anthropogenic sedimentation in ASBS. The natural habitat conditions in the ASBS shall not be altered as a result of anthropogenic sedimentation.
- f. The ASBS Compliance Plan shall describe the non-structural BMPs currently employed and planned in the future (including those for construction activities), and include an implementation schedule. The ASBS Compliance Plan shall include non-structural BMPs that address public education and outreach. Education and outreach efforts must adequately inform the public that direct discharges of pollutants from private property not entering an MS4 are prohibited. The ASBS Compliance Plan shall also describe the structural BMPs, including any low impact development (LID) measures, currently employed and planned for higher threat discharges and include an implementation schedule. To control storm water runoff discharges (at the end-of-pipe) during a design storm, permittees must first consider using LID practices to infiltrate, use, or evapotranspire storm water runoff on-site.
- g. The BMPs and implementation schedule shall be designed to ensure that natural water quality conditions in the receiving water are achieved and maintained by either reducing flows from impervious surfaces or reducing pollutant loading, or some combination thereof.
- h. If the results of the receiving water monitoring described in IV.B. of these special conditions indicate that the storm water runoff is causing or contributing to an alteration of natural ocean water quality in the ASBS, the discharger shall submit a report to the State Water Board and Regional Water Board within 30 days of receiving the results.
 - (1) The report shall identify the constituents in storm water runoff that alter natural ocean water quality and the sources of these constituents.
 - (2) The report shall describe BMPs that are currently being implemented, BMPs that are identified in the SWMP or SWPPP for future implementation, and any additional BMPs that may be added to the SWMP or SWPPP to address the alteration of natural water quality. The report shall include a new or modified implementation schedule for the BMPs.
 - (3) Within 30 days of the approval of the report by the State Water Board Executive Director (statewide permits) or Regional Water Board Executive Officer (Regional Water Board permits), the discharger shall revise its ASBS Compliance Plan to incorporate any new or modified BMPs that have been or will be implemented, the implementation schedule, and any additional monitoring required.
 - (4) As long as the discharger has complied with the procedures described above and is implementing the revised SWMP or SWPPP, the discharger does not have to repeat the same procedure for continuing or recurring exceedances of natural ocean water quality conditions due to the same constituent.
 - (5) Compliance with this section does not excuse violations of any term, prohibition, or condition contained in these Special Protections.

3. Compliance Schedule

- a. On the effective date of the Exception, all non-authorized non-storm water discharges (e.g., dry weather flow) are effectively prohibited.
- b. Within one year from the effective date of the Exception, the discharger shall submit a written ASBS Compliance Plan to the State Water Board Executive Director (statewide permits) or Regional Water Board Executive Officer (Regional Water Board permits) that describes its strategy to comply with these special conditions, including the requirement to maintain natural water quality in the affected ASBS. The ASBS Compliance Plan shall include a time schedule to implement appropriate non-structural and structural controls (implementation schedule) to comply with these special conditions for inclusion in the discharger's SWMP or SWPPP, as appropriate to permit type.
- c. Within 18 months of the effective date of the Exception, any non-structural controls that are necessary to comply with these special conditions shall be implemented.
- d. Within four (4) years of the effective date of the Exception, any structural controls identified in the ASBS Compliance Plan that are necessary to comply with these special conditions shall be operational.
- e. Within four (4) years of the effective date of the Exception, all dischargers must comply with the requirement that their discharges into the affected ASBS maintain natural ocean water quality. If the initial results of post-storm receiving water quality testing indicate levels higher than the 85th percentile threshold of reference water quality data and the pre-storm receiving water levels, then the discharger must re-sample the receiving water, pre- and post-storm. If after re-sampling the post-storm levels are still higher than the 85th percentile threshold of reference water quality data, and the pre-storm receiving water levels, for any constituent, then natural ocean water quality is exceeded. See attached Flowchart.
- f. The Executive Director of the State Water Board (statewide permits) or Executive Officer of the Regional Water Board (Regional Water Board permits) may only authorize additional time to comply with the special conditions d. and e., above if good cause exists to do so. Good cause means a physical impossibility or lack of funding.

If a discharger claims physical impossibility, it shall notify the Board in writing within thirty (30) days of the date that the discharger first knew of the event or circumstance that caused or would cause it to fail to meet the deadline in d. or e. The notice shall describe the reason for the noncompliance or anticipated noncompliance and specifically refer to this Section of this Exception. It shall describe the anticipated length of time the delay in compliance may persist, the cause or causes of the delay as well as measures to minimize the impact of the delay on water quality, the measures taken or to be taken by the discharger to prevent or minimize the delay, the schedule by which the measures will be implemented, and the anticipated date of compliance. The discharger shall adopt all reasonable measures to avoid and minimize such delays and their impact on water quality.

The discharger may request an extension of time for compliance based on lack of funding. The request for an extension shall require:

1. for municipalities, a demonstration of significant hardship to discharger ratepayers, by showing the relationship of storm water fees to annual household income for residents within the discharger's jurisdictional area, and the discharger has made timely and complete applications for all available bond and grant funding, and either no bond or grant funding is available, or bond and/or grant funding is inadequate; or
2. for other governmental agencies, a demonstration and documentation of a good faith effort to acquire funding through that agency's budgetary process.

B. NONPOINT SOURCE DISCHARGES

1. General Provisions for Nonpoint Sources

- a. Existing nonpoint source waste discharges are allowed into an ASBS only under the following conditions:
 - (1) The discharges are authorized under waste discharge requirements, a conditional waiver of waste discharge requirements, or a conditional prohibition issued by the State Water Board or a Regional Water Board.
 - (2) The discharges are in compliance with the applicable terms, prohibitions, and special conditions contained in these Special Protections.
 - (3) The discharges:
 - (i) Are essential for flood control or slope stability, including roof, landscape, road, and parking lot drainage;
 - (ii) Are designed to prevent soil erosion;
 - (iii) Occur only during wet weather;
 - (iv) Are composed of only storm water runoff.
- b. Discharges composed of storm water runoff shall not alter natural ocean water quality in an ASBS.
- c. The discharge of trash is prohibited.
- d. Only existing nonpoint source waste discharges are allowed. "Existing nonpoint source waste discharges" are discharges that were ongoing prior to January 1, 2005. "New nonpoint source discharges" are defined as those that commenced on or after January 1, 2005. A change to an existing nonpoint source discharge, in terms of relocation or alteration, in order to comply with these special conditions, is allowed and does not constitute a new discharge.
- e. Non-storm water discharges from nonpoint sources (those not subject to an NPDES Permit) are prohibited except as provided below:

- (1) The term “non-storm water discharges” means any waste discharges that are not composed entirely of storm water.
- (2) The following non-storm water discharges are allowed, provided that the discharges are essential for emergency response purposes, structural stability, slope stability, or occur naturally:
 - (i) Discharges associated with emergency fire fighting operations.
 - (ii) Foundation and footing drains.
 - (iii) Water from crawl space or basement pumps.
 - (iv) Hillside dewatering.
 - (v) Naturally occurring groundwater seepage via a storm drain.
 - (vi) Non-anthropogenic flows from a naturally occurring stream via a culvert or storm drain, as long as there are no contributions of anthropogenic runoff.
- (3) Authorized non-storm water discharges shall not cause or contribute to a violation of the water quality objectives in Chapter II of the Ocean Plan nor alter natural ocean water quality in an ASBS.

- f. At the San Clemente Island ASBS, discharges incidental to military training and research, development, test, and evaluation operations are allowed. Discharges incidental to underwater demolition and other in-water explosions are not allowed in the two military closure areas in the vicinity of Wilson Cove and Castle Rock. Discharges must not result in a violation of the water quality objectives, including the protection of the marine aquatic life beneficial use, anywhere in the ASBS.
- g. At the San Nicolas Island and Begg Rock ASBS, discharges incidental to military research, development, testing, and evaluation of, and training with, guided missile and other weapons systems, fleet training exercises, small-scale amphibious warfare training, and special warfare training are allowed. Discharges incidental to underwater demolition and other in-water explosions are not allowed. Discharges must not result in a violation of the water quality objectives, including the protection of the marine aquatic life beneficial use, anywhere in the ASBS.
- h. All other nonpoint source discharges not specifically authorized above are prohibited.

2. Planning and Reporting

- a. The nonpoint source discharger shall develop an ASBS Pollution Prevention Plan, including an implementation schedule, to address storm water runoff and any other nonpoint source discharges from its facilities. The ASBS Pollution Prevention Plan must be equivalent in contents to an ASBS Compliance Plan as described in I (A)(2) in this document. The ASBS Pollution Prevention Plan is subject to approval by the Executive Director of the State Water Board (statewide waivers or waste discharge requirements) or Executive Officer of the Regional Water Board (Regional Water Board waivers or waste discharge requirements).

- b. The ASBS Pollution Prevention Plan shall address storm water discharges (wet weather flows) and, in particular, describe how pollutant reductions in storm water runoff that are necessary to comply with these special conditions, will be achieved through Management Measures and associated Management Practices (Management Measures/Practices). Structural BMPs need not be installed if the discharger can document to the satisfaction of the State Water Board Executive Director or Regional Water Board Executive Officer that such installation would pose a threat to health or safety. Management Measures to control storm water runoff during a design storm shall achieve on average the following target levels:

- (1) Set as the Table B Instantaneous Maximum Water Quality Objectives in Chapter II of the Ocean Plan; or
- (2) By reducing pollutant loading during storm events, for the applicant's total discharges, by 90%.

The baseline for these determinations is the effective date of the Exception, and the reductions must be achieved and documented within four (4) years of the effective date.

- c. If the results of the receiving water monitoring described in IV.B. of these special conditions indicate that the storm water runoff or other nonpoint source pollution is causing or contributing to an alteration of natural ocean water quality in the ASBS, the discharger shall submit a report to the State Water Board and the Regional Water Board within 30 days of receiving the results.

- (1) The report shall identify the constituents that alter natural water quality and the sources of these constituents.
- (2) The report shall describe Management Measures/Practices that are currently being implemented, Management Measures/Practices that are identified in the ASBS Pollution Prevention Plan for future implementation, and any additional Management Measures/Practices that may be added to the Pollution Prevention Plan to address the alteration of natural water quality. The report shall include a new or modified implementation schedule for the Management Measures/Practices.
- (3) Within 30 days of the approval of the report by the State Water Board Executive Director (statewide waivers or waste discharge requirements) or Executive Officer of the Regional Water Board (Regional Water Board waivers or waste discharge requirements), the discharger shall revise its ASBS Pollution Prevention Plan to incorporate any new or modified Management Measures/Practices that have been or will be implemented, the implementation schedule, and any additional monitoring required.
- (4) As long as the discharger has complied with the procedures described above and is implementing the revised ASBS Pollution Prevention Plan, the discharger does not have to repeat the same procedure for continuing or recurring exceedances of natural water quality conditions due to the same constituent.
- (5) Compliance with this section does not excuse violations of any term, prohibition, or condition contained in these Special Protections.

3. Compliance Schedule

- a. On the effective date of the Exception, all non-authorized non-storm water discharges (e.g., dry weather flow) are effectively prohibited.
- b. Within one year from the effective date of the Exception, the dischargers shall submit a written ASBS Pollution Prevention Plan to the State Water Board Executive Director (statewide waivers or waste discharge requirements) or Executive Officer of the Regional Water Board (Regional Water Board waivers or waste discharge requirements) that describes its strategy to comply with these special conditions, including the requirement to maintain natural ocean water quality in the affected ASBS. The Pollution Prevention Plan shall include a time schedule to implement appropriate non-structural and structural controls to comply with these special conditions for inclusion in the discharger's Pollution Prevention Plan.
- c. Within 18 months of the effective date of the Exception, any non-structural controls that are necessary to comply with these Special Protections shall be implemented.
- d. Within four (4) years of the effective date of the Exception, any structural controls identified in the ASBS Pollution Prevention Plan that are necessary to comply with these special conditions shall be operational.
- e. Within four (4) years of the effective date of the Exception, all dischargers must comply with the requirement that their discharges into the affected ASBS maintain natural ocean water quality. If the initial results of post-storm receiving water quality testing indicate levels higher than the 85th percentile threshold of reference water quality data and the pre-storm receiving water levels, then the discharger must re-sample the receiving water pre- and post-storm. If after re-sampling the post-storm levels are still higher than the 85th percentile threshold of reference water quality data and the pre-storm receiving water levels, for any constituent, then natural ocean water quality is exceeded. See attached Flowchart.
- f. The Executive Director of the State Water Board (statewide waivers or waste discharge requirements) or Executive Officer of the Regional Water Board (Regional Water Board waivers or waste discharge requirements) may only authorize additional time to comply with the special conditions d. and e., above if good cause exists to do so. Good cause means a physical impossibility or lack of funding.

If a discharger claims physical impossibility, it shall notify the Board in writing within thirty (30) days of the date that the discharger first knew of the event or circumstance that caused or would cause it to fail to meet the deadline in d. or e. The notice shall describe the reason for the noncompliance or anticipated noncompliance and specifically refer to this Section of this Exception. It shall describe the anticipated length of time the delay in compliance may persist, the cause or causes of the delay as well as measures to minimize the impact of the delay on water quality, the measures taken or to be taken by the discharger to prevent or minimize the delay, the schedule by which the measures will be implemented, and the anticipated date of compliance. The discharger shall adopt all reasonable measures to avoid and minimize such delays and their impact on water quality.

The discharger may request an extension of time for compliance based on lack of funding. The request for an extension shall require:

1. a demonstration that the discharger has made timely and complete applications for all available bond and grant funding, and either no bond or grant funding is available, or bond and/or grant funding is inadequate; or
2. for governmental agencies, a demonstration and documentation of a good faith effort to acquire funding through that agency's budgetary process.

II. ADDITIONAL REQUIREMENTS FOR PARKS AND RECREATION FACILITIES

In addition to the provisions in Section I (A) or I (B), respectively, a discharger with parks and recreation facilities shall comply with the following:

- A. The discharger shall include a section in an ASBS Compliance Plan (for NPDES dischargers) or an ASBS Pollution Prevention Plan (for nonpoint source dischargers) to address storm water runoff from parks and recreation facilities.
 1. The plan shall identify all pollutant sources, including sediment sources, which may result in waste entering storm water runoff. Pollutant sources include, but are not limited to, roadside rest areas and vistas, picnic areas, campgrounds, trash receptacles, maintenance facilities, park personnel housing, portable toilets, leach fields, fuel tanks, roads, piers, and boat launch facilities.
 2. The plan shall describe BMPs or Management Measures/Practices that will be implemented to control soil erosion (both temporary and permanent erosion controls) and reduce or eliminate pollutants in storm water runoff in order to achieve and maintain natural water quality conditions in the affected ASBS. The plan shall include BMPs or Management Measures/Practices to ensure that trails and culverts are maintained to prevent erosion and minimize waste discharges to ASBS.
 3. The plan shall include BMPs or Management Measures/Practices to prevent the discharge of pesticides or other chemicals, including agricultural chemicals, in storm water runoff to the affected ASBS.
 4. The plan shall include BMPs or Management Measures/Practices that address public education and outreach. The goal of these BMPs or Management Measures/Practices is to ensure that the public is adequately informed that waste discharges to the affected ASBS are prohibited or limited by special conditions in these Special Protections. The BMPs or Management Measures/Practices shall include signage at camping, picnicking, beach and roadside parking areas, and visitor centers, or other appropriate measures, which notify the public of any applicable requirements of these Special Protections and identify the ASBS boundaries.
 5. The plan shall include BMPs or Management Measures/Practices that address the prohibition against the discharge of trash to ASBS. The BMPs or Management Measures/Practices shall include measures to ensure that adequate trash receptacles are available for public use at visitor facilities, including parking areas, and that the

receptacles are adequately maintained to prevent trash discharges into the ASBS. Appropriate measures include covering trash receptacles to prevent trash from being wind blown and periodically emptying the receptacles to prevent overflows.

6. The plan shall include BMPs or Management Measures/Practices to address runoff from parking areas and other developed features to ensure that the runoff does not alter natural water quality in the affected ASBS. BMPs or Management Measures/Practices shall include measures to reduce pollutant loading in runoff to the ASBS through installation of natural area buffers (LID), treatment, or other appropriate measures.
- B. Maintenance and repair of park and recreation facilities must not result in waste discharges to the ASBS. The practice of road oiling must be minimized or eliminated, and must not result in waste discharges to the ASBS.

III. ADDITIONAL REQUIREMENTS – WATERFRONT AND MARINE OPERATIONS

In addition to the provisions in Section I (A) or I (B), respectively, a discharger with waterfront and marine operations shall comply with the following:

- A. For discharges related to waterfront and marine operations, the discharger shall develop a Waterfront and Marine Operations Management Plan (Waterfront Plan). This plan shall contain appropriate Management Measures/Practices to address nonpoint source pollutant discharges to the affected ASBS.
1. The Waterfront Plan shall contain appropriate Management Measures/Practices for any waste discharges associated with the operation and maintenance of vessels, moorings, piers, launch ramps, and cleaning stations in order to ensure that beneficial uses are protected and natural water quality is maintained in the affected ASBS.
 2. For discharges from marinas and recreational boating activities, the Waterfront Plan shall include appropriate Management Measures, described in The Plan for California's Nonpoint Source Pollution Control Program, for marinas and recreational boating, or equivalent practices, to ensure that nonpoint source pollutant discharges do not alter natural water quality in the affected ASBS.
 3. The Waterfront Plan shall include Management Practices to address public education and outreach to ensure that the public is adequately informed that waste discharges to the affected ASBS are prohibited or limited by special conditions in these Special Protections. The management practices shall include appropriate signage, or similar measures, to inform the public of the ASBS restrictions and to identify the ASBS boundaries.
 4. The Waterfront Plan shall include Management Practices to address the prohibition against trash discharges to ASBS. The Management Practices shall include the provision of adequate trash receptacles for marine recreation areas, including parking areas, launch ramps, and docks. The plan shall also include appropriate Management Practices to ensure that the receptacles are adequately maintained and secured in order to prevent trash discharges into the ASBS. Appropriate Management Practices include covering the trash receptacles to prevent trash from being windblown, staking or

securing the trash receptacles so they don't tip over, and periodically emptying the receptacles to prevent overflow.

5. The discharger shall submit its Waterfront Plan to the by the State Water Board Executive Director (statewide waivers or waste discharge requirements) or Executive Officer of the Regional Water Board (Regional Water Board waivers or waste discharge requirements) within six months of the effective date of these special conditions. The Waterfront Plan is subject to approval by the State Water Board Executive Director or the Regional Water Board Executive Officer, as appropriate. The plan must be fully implemented within 18 months of the effective date of the Exception.
- B. The discharge of chlorine, soaps, petroleum, other chemical contaminants, trash, fish offal, or human sewage to ASBS is prohibited. Sinks and fish cleaning stations are point source discharges of wastes and are prohibited from discharging into ASBS. Anthropogenic accumulations of discarded fouling organisms on the sea floor must be minimized.
- C. Limited-term activities, such as the repair, renovation, or maintenance of waterfront facilities, including, but not limited to, piers, docks, moorings, and breakwaters, are authorized only in accordance with Chapter III.E.2 of the Ocean Plan.
- D. If the discharger anticipates that the discharger will fail to fully implement the approved Waterfront Plan within the 18 month deadline, the discharger shall submit a technical report as soon as practicable to the State Water Board Executive Director or the Regional Water Board Executive Officer, as appropriate. The technical report shall contain reasons for failing to meet the deadline and propose a revised schedule to fully implement the plan.
- E. The State Water Board or the Regional Water Board may, for good cause, authorize additional time to comply with the Waterfront Plan. Good cause means a physical impossibility or lack of funding.

If a discharger claims physical impossibility, it shall notify the Board in writing within thirty (30) days of the date that the discharger first knew of the event or circumstance that caused or would cause it to fail to meet the deadline in Section III.A.5. The notice shall describe the reason for the noncompliance or anticipated noncompliance and specifically refer to this Section of this Exception. It shall describe the anticipated length of time the delay in compliance may persist, the cause or causes of the delay as well as measures to minimize the impact of the delay on water quality, the measures taken or to be taken by the discharger to prevent or minimize the delay, the schedule by which the measures will be implemented, and the anticipated date of compliance. The discharger shall adopt all reasonable measures to avoid and minimize such delays and their impact on water quality. The discharger may request an extension of time for compliance based on lack of funding. The request for an extension shall require:

1. a demonstration of significant hardship by showing that the discharger has made timely and complete applications for all available bond and grant funding, and either no bond or grant funding is available, or bond and/or grant funding is inadequate.
2. for governmental agencies, a demonstration and documentation of a good faith effort to acquire funding through that agency's budgetary process.

IV. MONITORING REQUIREMENTS

Monitoring is mandatory for all dischargers to assure compliance with the Ocean Plan. Monitoring requirements include both: (A) core discharge monitoring, and (B) ocean receiving water monitoring. The State and Regional Water Boards must approve sampling site locations and any adjustments to the monitoring programs. All ocean receiving water and reference area monitoring must be comparable with the Water Boards' Surface Water Ambient Monitoring Program (SWAMP).

Safety concerns: Sample locations and sampling periods must be determined considering safety issues. Sampling may be postponed upon notification to the State and Regional Water Boards if hazardous conditions prevail.

Analytical Chemistry Methods: All constituents must be analyzed using the lowest minimum detection limits comparable to the Ocean Plan water quality objectives. For metal analysis, all samples, including storm water effluent, reference samples, and ocean receiving water samples, must be analyzed by the approved analytical method with the lowest minimum detection limits (currently Inductively Coupled Plasma/Mass Spectrometry) described in the Ocean Plan.

A. CORE DISCHARGE MONITORING PROGRAM

1. General sampling requirements for timing and storm size:

Runoff must be collected during a storm event that is greater than 0.1 inch and generates runoff, and at least 72 hours from the previously measurable storm event. Runoff samples shall be collected when post-storm receiving water is sampled, and analyzed for the same constituents as receiving water and reference site samples (see section IV B) as described below.

2. Runoff flow measurements

- a. For municipal/industrial storm water outfalls in existence as of December 31, 2007, 18 inches (457mm) or greater in diameter/width (including multiple outfall pipes in combination having a width of 18 inches, runoff flows must be measured or calculated, using a method acceptable to and approved by the State and Regional Water Boards.
- b. This will be reported annually for each precipitation season to the State and Regional Water Boards.

3. Runoff samples – storm events

- a. For outfalls equal to or greater than 18 inches (0.46m) in diameter or width:
 - (1) samples of storm water runoff shall be analyzed during the same storm as receiving water samples for oil and grease, total suspended solids, and, within the range of the southern sea otter indicator bacteria or some other measure of fecal contamination; and

- (2) samples of storm water runoff shall be analyzed for critical life stage chronic toxicity (one invertebrate or algal species) at least once during each storm season when receiving water is sampled in the ASBS
 - (3) If an applicant has no outfall greater than 36 inches, then storm water runoff from the applicant's largest outfall shall be further analyzed during the same storm as receiving water samples for Ocean Plan Table B metals for protection of marine life, Ocean Plan polynuclear aromatic hydrocarbons (PAHs), current use pesticides (pyrethroids and OP pesticides), and nutrients (ammonia, nitrate and phosphates).
- b. For outfalls equal to or greater than 36 inches (0.91m) in diameter or width:
- (1) samples of storm water runoff shall be analyzed during the same storm as receiving water samples for oil and grease, total suspended solids, and, within the range of the southern sea otter indicator bacteria or some other measure of fecal contamination; and
 - (2) samples of storm water runoff shall be further analyzed during the same storm as receiving water samples for Ocean Plan Table B metals for protection of marine life, Ocean Plan polynuclear aromatic hydrocarbons (PAHs), current use pesticides (pyrethroids and OP pesticides), and nutrients (ammonia, nitrate and phosphates) and
 - (3) samples of storm water runoff shall be analyzed for critical life stage chronic toxicity (one invertebrate or algal species) at least once during each storm season when receiving water is sampled in the ASBS.
- b. For an applicant not participating in a regional monitoring program [see below in Section IV (B)] in addition to (a.) and (b.) above, a minimum of the two largest outfalls or 20 percent of the larger outfalls, whichever is greater, shall be sampled (flow weighted composite samples) at least three times annually during wet weather (storm event) and analyzed for all Ocean Plan Table A constituents, Table B constituents for marine aquatic life protection (except for toxicity, only chronic toxicity for three species shall be required), DDT, PCBs, Ocean Plan PAHs, OP pesticides, pyrethroids, nitrates, phosphates, and Ocean Plan indicator bacteria. For parties discharging to ASBS in more than one Regional Water Board region, at a minimum, one (the largest) such discharge shall be sampled annually in each Region.
4. The Executive Director of the State Water Board (statewide permits) or Executive Officer of the Regional Water Board (Regional Water Board permits) may reduce or suspend core monitoring once the storm runoff is fully characterized. This determination may be made at any point after the discharge is fully characterized, but is best made after the monitoring results from the first permit cycle are assessed.

B. Ocean Receiving Water and Reference Area Monitoring Program

In addition to performing the Core Discharge Monitoring Program in Section II.A above, all applicants having authorized discharges must perform ocean receiving water monitoring. In order to fulfill the requirements for monitoring the physical, chemical, and biological characteristics of the ocean receiving waters within their ASBS, dischargers may choose either

(1) an individual monitoring program, or (2) participation in a regional integrated monitoring program.

1. Individual Monitoring Program: The requirements listed below are for those dischargers who elect to perform an individual monitoring program to fulfill the requirements for monitoring the physical, chemical, and biological characteristics of the ocean receiving waters within the affected ASBS. In addition to Core Discharge Monitoring, the following additional monitoring requirements shall be met:

- a. Three times annually, during wet weather (storm events), the receiving water at the point of discharge from the outfalls described in section (IV)(A)(3)(c) above shall be sampled and analyzed for Ocean Plan Table A constituents, Table B constituents for marine aquatic life, DDT, PCBs, Ocean Plan PAHs, OP pesticides, pyrethroids, nitrates, phosphates, salinity, chronic toxicity (three species), and Ocean Plan indicator bacteria.

The sample location for the ocean receiving water shall be in the surf zone at the point of discharges; this must be at the same location where storm water runoff is sampled. Receiving water shall be sampled at approximately the same time prior to (pre-storm) and during (or immediately after) the same storm (post storm). Reference water quality shall also be sampled and analyzed for the same constituents pre-storm and post-storm, during the same storms when receiving water is sampled. Reference stations will be determined by the State Water Board's Division of Water Quality and the applicable Regional Water Board(s).

- b. Sediment sampling shall occur at least three times during every five (5) year period. The subtidal sediment (sand or finer, if present) at the discharge shall be sampled and analyzed for Ocean Plan Table B constituents for marine aquatic life, DDT, PCBs, PAHs, pyrethroids, and OP pesticides. For sediment toxicity testing, only an acute toxicity test using the amphipod *Eohaustorius estuarius* must be performed.
- c. A quantitative survey of intertidal benthic marine life shall be performed at the discharge and at a reference site. The survey shall be performed at least once every five (5) year period. The survey design is subject to approval by the Regional Water Board and the State Water Board's Division of Water Quality. The results of the survey shall be completed and submitted to the State Water Board and Regional Water Board at least six months prior to the end of the permit cycle.
- d. Once during each five (5) year period, a bioaccumulation study shall be conducted to determine the concentrations of metals and synthetic organic pollutants at representative discharge sites and at representative reference sites. The study design is subject to approval by the Regional Water Board and the State Water Board's Division of Water Quality. The bioaccumulation study may include California mussels (*Mytilus californianus*) and/or sand crabs (*Emerita analoga* or *Blepharipoda occidentalis*). Based on the study results, the Regional Water Board and the State Water Board's Division of Water Quality, may adjust the study design in subsequent permits, or add or modify additional test organisms (such as shore crabs or fish), or modify the study design appropriate for the area and best available sensitive measures of contaminant exposure.
- e. Marine Debris: Representative quantitative observations for trash by type and source shall be performed along the coast of the ASBS within the influence of the discharger's outfalls. The design, including locations and frequency, of the marine debris

observations is subject to approval by the Regional Water Board and State Water Board's Division of Water Quality.

- f. The monitoring requirements of the Individual Monitoring Program in this section are minimum requirements. After a minimum of one (1) year of continuous water quality monitoring of the discharges and ocean receiving waters, the Executive Director of the State Water Board (statewide permits) or Executive officer of the Regional Water Board (Regional Water Board permits) may require additional monitoring, or adjust, reduce or suspend receiving water and reference station monitoring. This determination may be made at any point after the discharge and receiving water is fully characterized, but is best made after the monitoring results from the first permit cycle are assessed.
2. Regional Integrated Monitoring Program: Dischargers may elect to participate in a regional integrated monitoring program, in lieu of an individual monitoring program, to fulfill the requirements for monitoring the physical, chemical, and biological characteristics of the ocean receiving waters within their ASBS. This regional approach shall characterize natural water quality, pre- and post-storm, in ocean reference areas near the mouths of identified open space watersheds and the effects of the discharges on natural water quality (physical, chemical, and toxicity) in the ASBS receiving waters, and should include benthic marine aquatic life and bioaccumulation components. The design of the ASBS stratum of a regional integrated monitoring program may deviate from the otherwise prescribed individual monitoring approach (in Section IV.B.1) if approved by the State Water Board's Division of Water Quality and the Regional Water Boards.
 - a. Ocean reference areas shall be located at the drainages of flowing watersheds with minimal development (in no instance more than 10% development), and shall not be located in CWA Section 303(d) listed waterbodies or have tributaries that are 303(d) listed. Reference areas shall be free of wastewater discharges and anthropogenic non-storm water runoff. A minimum of low threat storm runoff discharges (e.g. stream highway overpasses and campgrounds) may be allowed on a case-by-case basis. Reference areas shall be located in the same region as the ASBS receiving water monitoring occurs. The reference areas for each Region are subject to approval by the participants in the regional monitoring program and the State Water Board's Division of Water Quality and the applicable Regional Water Board(s). A minimum of three ocean reference water samples must be collected from each station, each from a separate storm. A minimum of one reference location shall be sampled for each ASBS receiving water site sampled per responsible party. For parties discharging to ASBS in more than one Regional Water Board region, at a minimum, one reference station and one receiving water station shall be sampled in each region.
 - b. ASBS ocean receiving water must be sampled in the surf zone at the location where the runoff makes contact with ocean water (i.e. at "point zero"). Ocean receiving water stations must be representative of worst-case discharge conditions (i.e. co-located at a large drain greater than 36 inches, or if drains greater than 36 inches are not present in the ASBS then the largest drain greater than 18 inches.) Ocean receiving water stations are subject to approval by the participants in the regional monitoring program and the State Water Board's Division of Water Quality and the applicable Regional Water Board(s). A minimum of three ocean receiving water samples must be collected during each storm season from each station, each from a separate storm. A minimum of one receiving water location shall be sampled in each ASBS per responsible party in that ASBS. For parties discharging to ASBS in more than one Regional Water Board region,

at a minimum, one reference station and one receiving water station shall be sampled in each region.

- c. Reference and receiving water sampling shall commence during the first full storm season following the adoption of these special conditions, and post-storm samples shall be collected when annual storm water runoff is sampled. Sampling shall occur in a minimum of two storm seasons. For those ASBS dischargers that have already participated in the Southern California Bight 2008 ASBS regional monitoring effort, sampling may be limited to only one storm season.
 - d. Receiving water and reference samples shall be analyzed for the same constituents as storm water runoff samples. At a minimum, constituents to be sampled and analyzed in reference and discharge receiving waters must include oil and grease, total suspended solids, Ocean Plan Table B metals for protection of marine life, Ocean Plan PAHs, pyrethroids, OP pesticides, ammonia, nitrate, phosphates, and critical life stage chronic toxicity for three species. In addition, within the range of the southern sea otter, indicator bacteria or some other measure of fecal contamination shall be analyzed.
3. Waterfront and Marine Operations: In addition to the above requirements for ocean receiving water monitoring, additional monitoring must be performed for marinas and boat launch and pier facilities:
- a. For all marina or mooring field operators, in mooring fields with 10 or more occupied moorings, the ocean receiving water must be sampled for Ocean Plan indicator bacteria, residual chlorine, copper, zinc, grease and oil, methylene blue active substances (MBAS), and ammonia nitrogen.
 - (1) For mooring field operators opting for an individual monitoring program (Section IV.B.1 above), this sampling must occur weekly (on the weekend) from May through October.
 - (2) For mooring field operators opting to participate in a regional integrated monitoring program (Section IV.B.2 above), this sampling must occur monthly from May through October on a high use weekend in each month. The Water Boards may allow a reduction in the frequency of sampling, through the regional monitoring program, after the first year of monitoring.
 - b. For all mooring field operators, the subtidal sediment (sand or finer, if present) within mooring fields and below piers shall be sampled and analyzed for Ocean Plan Table B metals (for marine aquatic life beneficial use), acute toxicity, PAHs, and tributyltin. For sediment toxicity testing, only an acute toxicity test using the amphipod *Eohaustorius estuarius* must be performed. This sampling shall occur at least three times during a five (5) year period. For mooring field operators opting to participate in a regional integrated monitoring program, the Water Boards may allow a reduction in the frequency of sampling after the first sampling effort's results are assessed.

Glossary

At the point of discharge(s) – Means in the surf zone immediately where runoff from an outfall meets the ocean water (a.k.a., at point zero).

Areas of Special Biological Significance (ASBS) – Those areas designated by the State Water Board as ocean areas requiring protection of species or biological communities to the extent that alteration of natural water quality is undesirable. All Areas of Special Biological Significance are also classified as a subset of State Water Quality Protection Areas.

Design storm – For purposes of these Special Protections, a design storm is defined as the volume of runoff produced from one inch of precipitation per day.

Development – Relevant to reference monitoring sites, means urban, industrial, agricultural, grazing, mining, and timber harvesting land uses.

Higher threat discharges - permitted storm drains discharging equal to or greater than 18 inches, industrial storm drains, agricultural runoff discharged through an MS4, discharges associated with waterfront and marina operations (e.g., piers, launch ramps, mooring fields, and associated vessel support activities, except for passive discharges defined below), and direct discharges associated with commercial or industrial activities to ASBS.

Low Impact Development (LID) – A sustainable practice that benefits water supply and contributes to water quality protection. Unlike traditional stormwater management, which entails collecting and conveying storm water runoff through storm drains, pipes, or other conveyances to a centralized storm water facility, LID focuses on using site design and storm water management to maintain the site's pre-development runoff rates and volumes. The goal of LID is to mimic a site's predevelopment hydrology by using design techniques that infiltrate, filter, store, evaporate, and detain runoff close to the source of rainfall.

Marine Operations – Marinas or mooring fields that contain slips or mooring locations for 10 or more vessels.

Management Measure (MM) - economically achievable measures for the control of the addition of pollutants from various classes of nonpoint sources of pollution, which reflect the greatest degree of pollutant reduction achievable through the application of the best available nonpoint pollution control practices, technologies, processes, siting criteria, operating methods, or other alternatives. For example, in the "marinas and recreational boating" land-use category specified in the Plan for California's Nonpoint Source Pollution Control Program (NPS Program Plan) (SWRCB, 1999), "boat cleaning and maintenance" is considered a MM or the source of a specific class or type of NPS pollution.

Management Practice (MP) - the practices (e.g., structural, non-structural, operational, or other alternatives) that can be used either individually or in combination to address a specific MM class or classes of NPS pollution. For example, for the "boat cleaning and maintenance" MM, specific MPs can include, but are not limited to, methods for the selection of environmentally sensitive hull paints or methods for cleaning/removal of hull copper anti-fouling paints.

Municipal Separate Storm Sewer System (MS4) – A municipally-owned storm sewer system regulated under the Phase I or Phase II storm water program implemented in compliance with Clean Water Act section 402(p). Note that an MS4 program’s boundaries are not necessarily congruent with the permittee’s political boundaries.

Natural Ocean Water Quality - The water quality (based on selected physical, chemical and biological characteristics) that is required to sustain marine ecosystems, and which is without apparent human influence, *i.e.*, an absence of significant amounts of: (a) man-made constituents (*e.g.*, DDT); (b) other chemical (*e.g.*, trace metals), physical (temperature/thermal pollution, sediment burial), and biological (*e.g.*, bacteria) constituents at concentrations that have been elevated due to man’s activities above those resulting from the naturally occurring processes that affect the area in question; and (c) non-indigenous biota (*e.g.*, invasive algal bloom species) that have been introduced either deliberately or accidentally by man. Discharges “*shall not alter natural ocean water quality*” as determined by a comparison to the range of constituent concentrations in reference areas agreed upon via the regional monitoring program(s). If monitoring information indicates that *natural ocean water quality* is not maintained, but there is sufficient evidence that a discharge is not contributing to the alteration of natural water quality, then the Regional Water Board may make that determination. In this case, sufficient information must include runoff sample data that has equal or lower concentrations for the range of constituents at the applicable reference area(s).

Nonpoint source – Nonpoint pollution sources generally are sources that do not meet the definition of a point source. Nonpoint source pollution typically results from land runoff, precipitation, atmospheric deposition, agricultural drainage, marine/boating operations or hydrologic modification. Nonpoint sources, for purposes of these Special Protections, include discharges that are not required to be regulated under an NPDES permit.

Non-storm water discharge – Any runoff that is not the result of a precipitation event. This is often referred to as “dry weather flow.”

Non-structural control – A Best Management Practice that involves operational, maintenance, regulatory (*e.g.*, ordinances) or educational activities designed to reduce or eliminate pollutants in runoff, and that are not structural controls (*i.e.* there are no physical structures involved).

Physical impossibility - means any act of God, war, fire, earthquake, windstorm, flood or natural catastrophe; unexpected and unintended accidents not caused by discharger or its employees’ negligence; civil disturbance, vandalism, sabotage or terrorism; restraint by court order or public authority or agency; or action or non-action by, or inability to obtain the necessary authorizations or approvals from any governmental agency other than the permittee.

Representative sites and monitoring procedures – Are to be proposed by the discharger, with appropriate rationale, and subject to approval by Water Board staff.

Sheet-flow – Runoff that flows across land surfaces at a shallow depth relative to the cross-sectional width of the flow. These types of flow may or may not enter a storm drain system before discharge to receiving waters.

Storm Season – also referred to as rainy season, means the months of the year from the onset of rainfall during autumn until the cessation of rainfall in the spring.

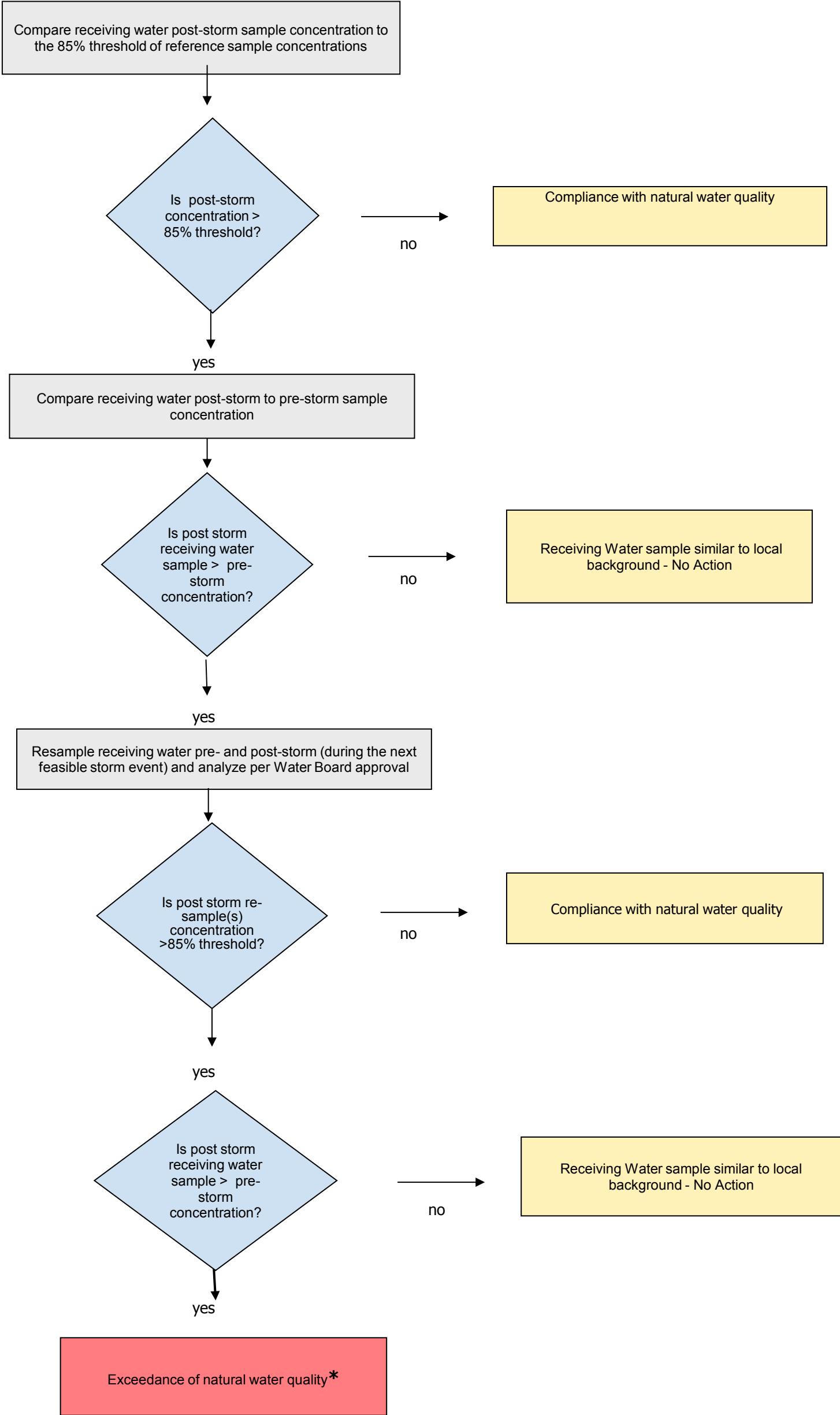
Structural control – A Best Management Practice that involves the installation of engineering solutions to the physical treatment or infiltration of runoff.

Surf Zone - The surf zone is defined as the submerged area between the breaking waves and the shoreline at any one time.

Surface Water Ambient Monitoring Program (SWAMP) comparable – means that the monitoring program must 1) meet or exceed 2008 SWAMP Quality Assurance Program Management Plan (QAPP) Measurement Quality Objectives, or 2) have a Quality Assurance Project Plan that has been approved by SWAMP; in addition data must be formatted to match the database requirements of the SWAMP Information Management System. Adherence to the measurement quality objectives in the Southern California Bight 2008 ASBS Regional Monitoring Program QAPP and data base management comprises being SWAMP comparable.

Waterfront Operations - Piers, launch ramps, and cleaning stations in the water or on the adjacent shoreline.

**Attachment 1
Special Protections Sections I(A)(3)(e) and I(B)(3)(e)
Flowchart to Determine Compliance with natural Water Quality**



*** When an exceedance of natural water quality occurs, the discharger must comply with section I.A.2.h (for permitted storm water) or section I.B.2.c (for nonpoint sources). Note, when sampling data is available, end-of-pipe effluent concentrations will be considered by the Water Boards in making this determination.**