

Central Coast Regional Water Quality Control Board
Elkhorn Slough Environmental Enhancement and Mitigation Program Plan - Retrospective

Watsonville, CA September 24, 2015



The Moss Landing Power Plant:
Elkhorn Slough ^{SILBERSTEIN}
**Environmental Enhancement
and Mitigation Program Plan**

For submittal to:
California Energy Commission
and Central Coast Regional
Water Quality Control Board



Prepared by:
Elkhorn Slough Foundation
and the Advisory Team

With assistance from:
Aspen Environmental Group

April 2002





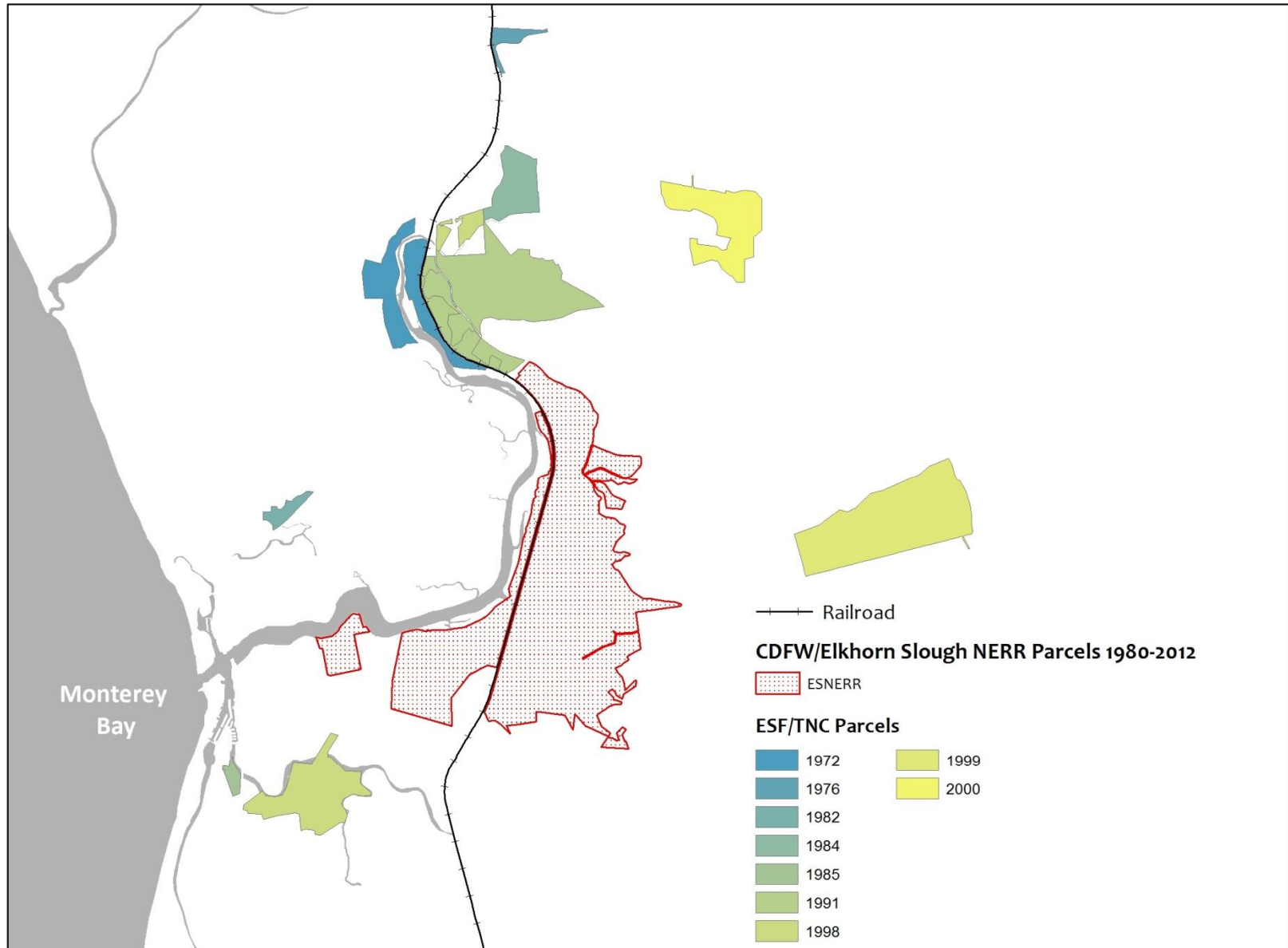


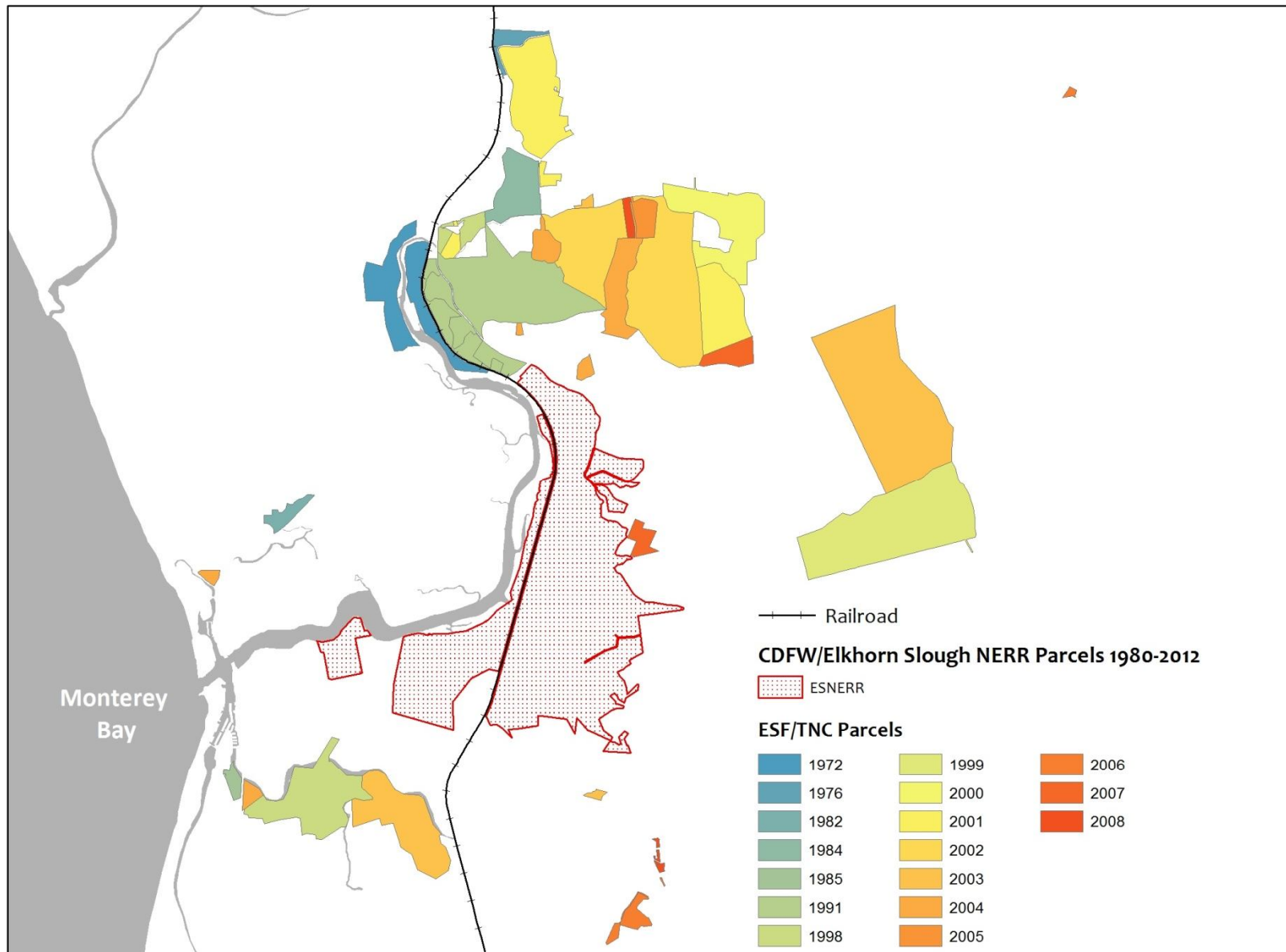


Before the sand...
(1997)

After the rains...
(1998)











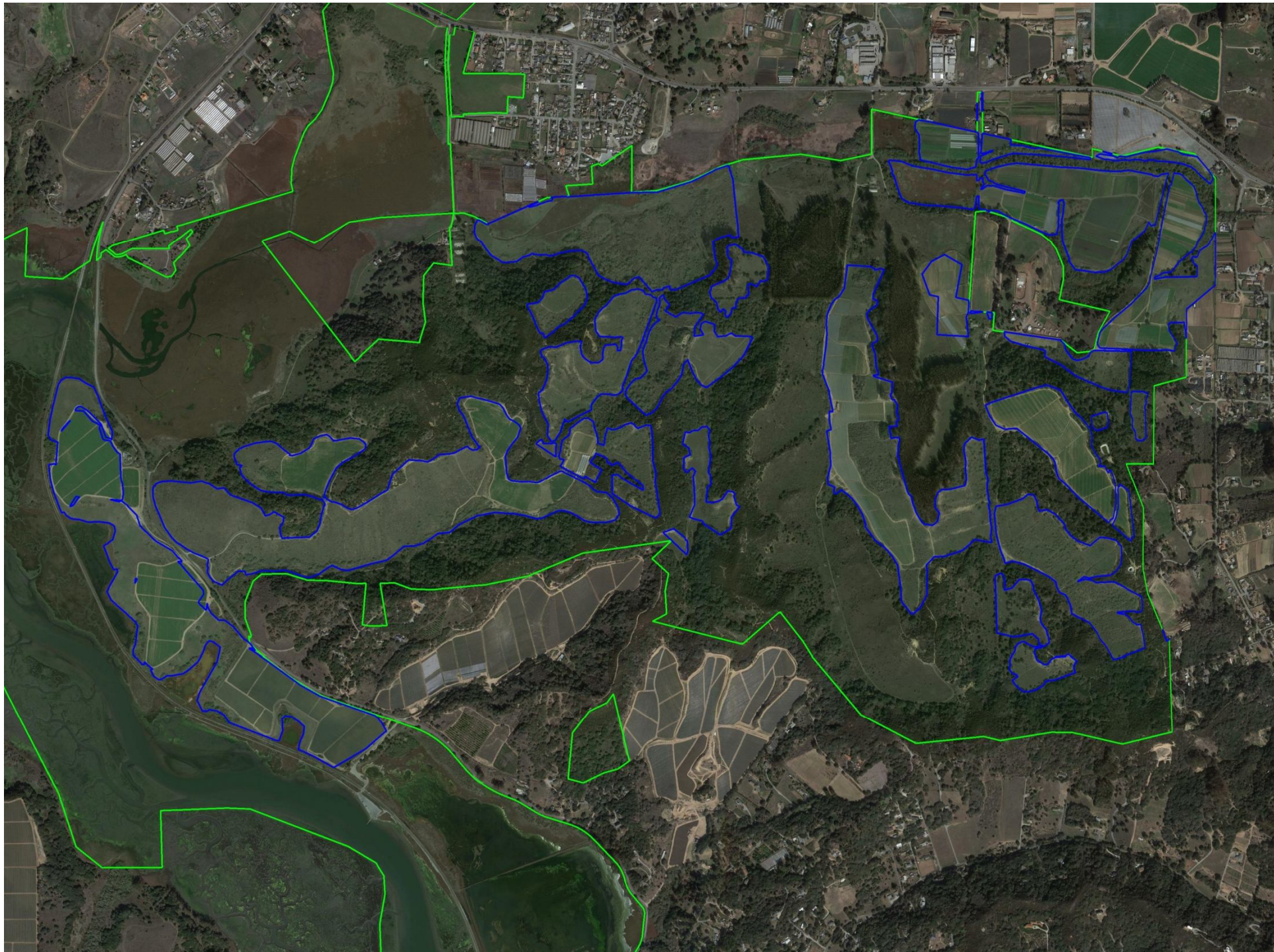


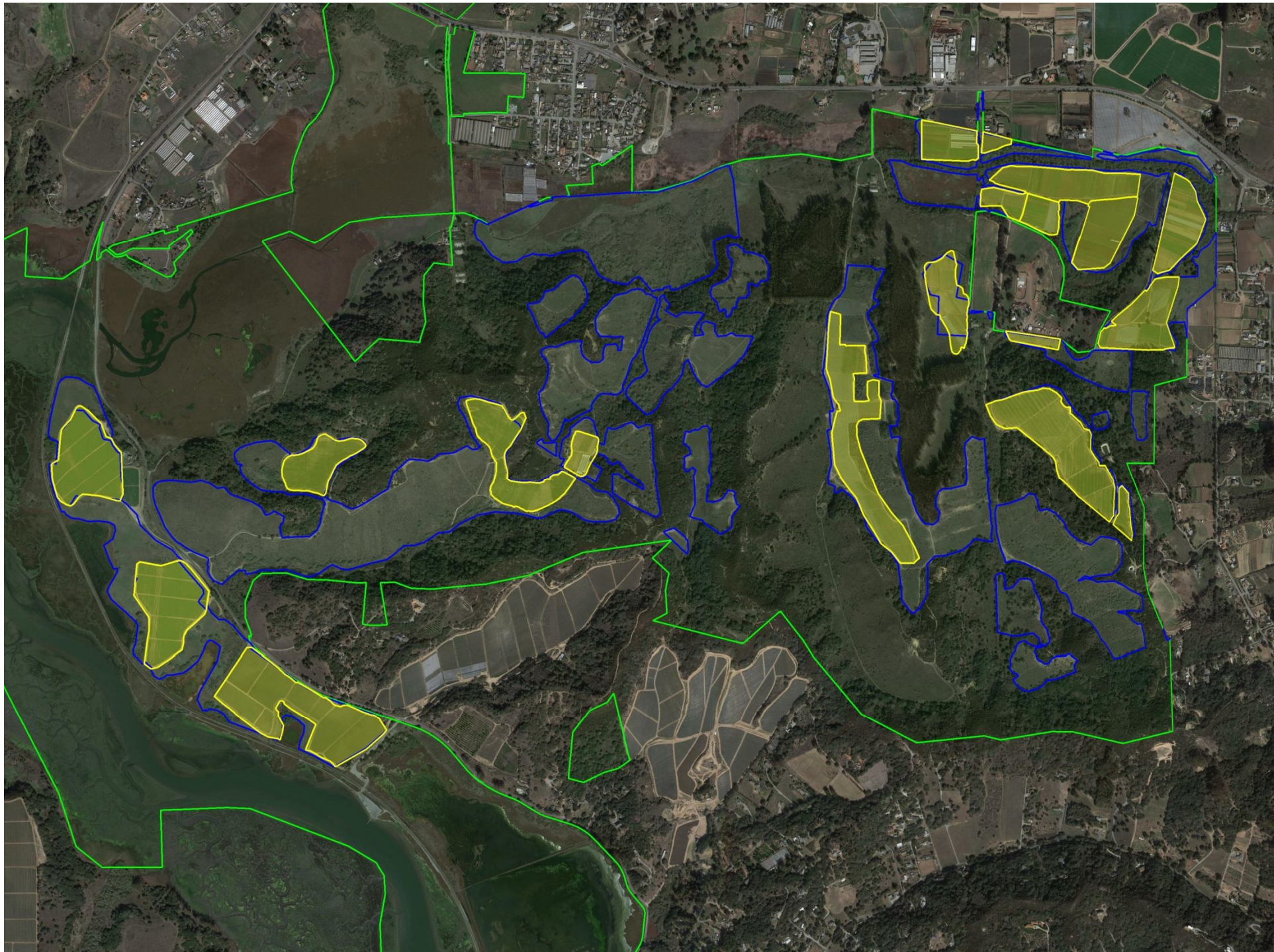


















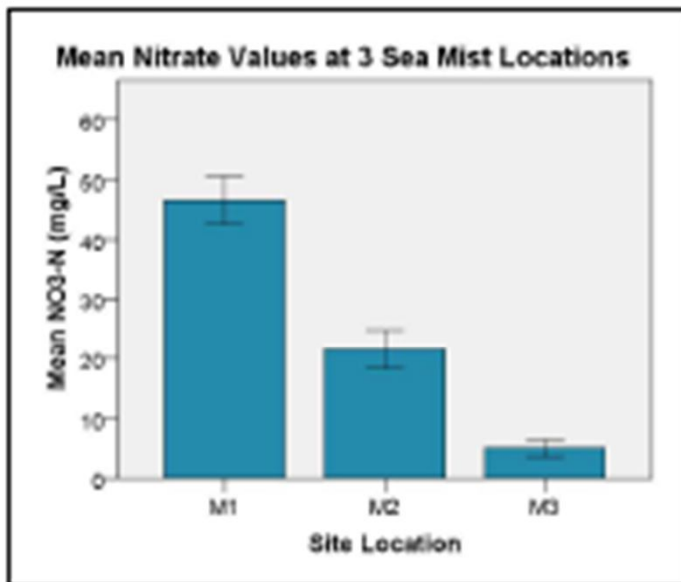






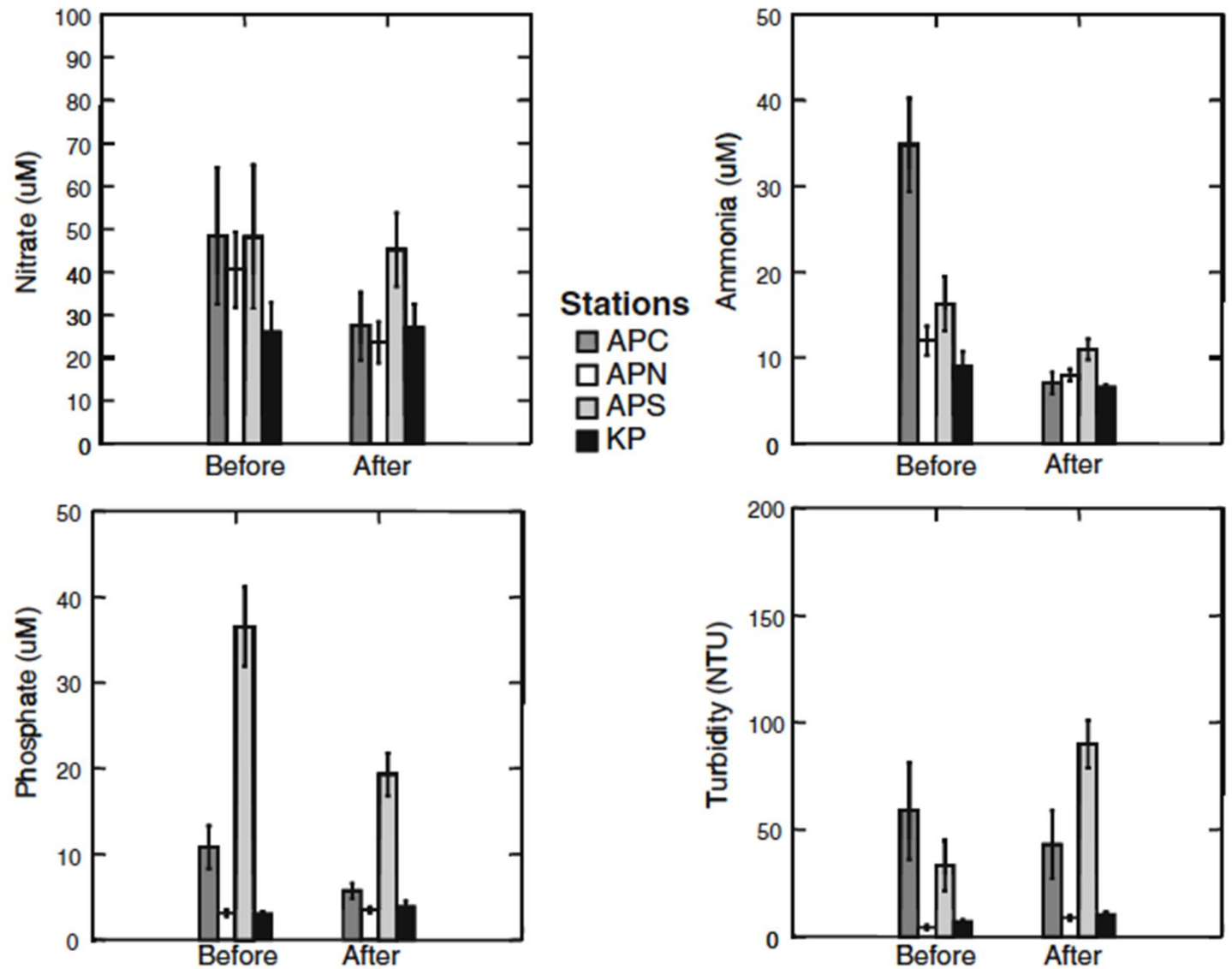






Nitrate Levels at 3 Sea Mist wetland locations. Site numbers increase downstream.

Fig. 5 Univariate analysis of variance plots for the water quality parameters that changed significantly at three Azevedo Pond Stations and Kirby Park control station) after restoration. Untransformed averaged concentrations measured at each station for the time periods before and after restoration are presented here with the standard error, while statistics were performed on log-transformed values with Kirby Park concentrations subtracted first



Elkhorn Slough Environmental Enhancement and Mitigation Program Plan

\$5M directed to conservation mitigation by RWQCB and CEC

\$2M initial stewardship endowment principal

Results:

Real Estate investment : \$30M

Restoration: \$10M

Stewardship: \$250K/yr

Stewardship Endowment: \$3.25M

ESF Endowment/invested \$2.5M

Acquisitions 3,200 acres

Transfers 300 acres to public agencies
800 acres – TNC to ESF

Acreage converted to Organic Production: 140

Acres of farm buffers created: over 100

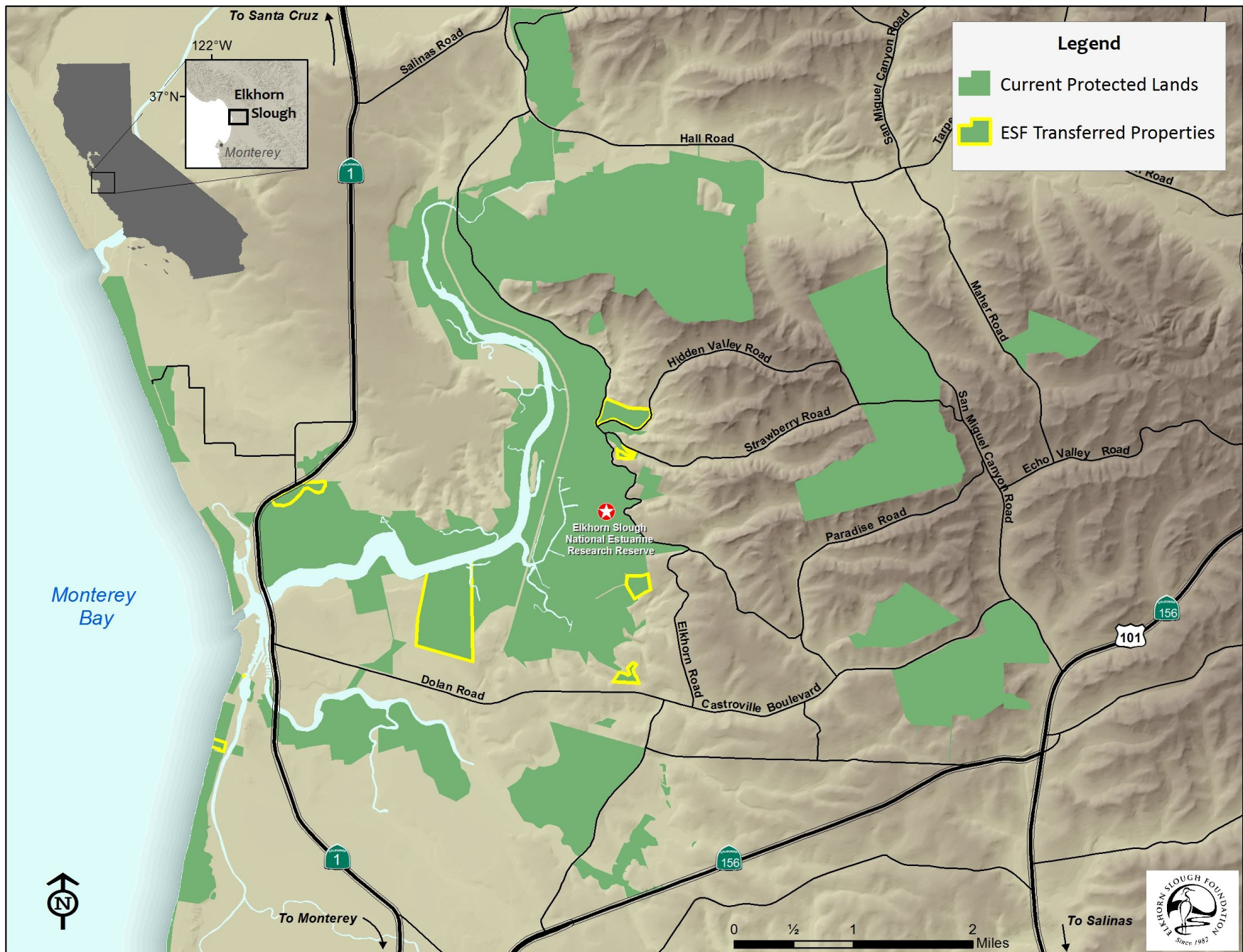
Estimated :

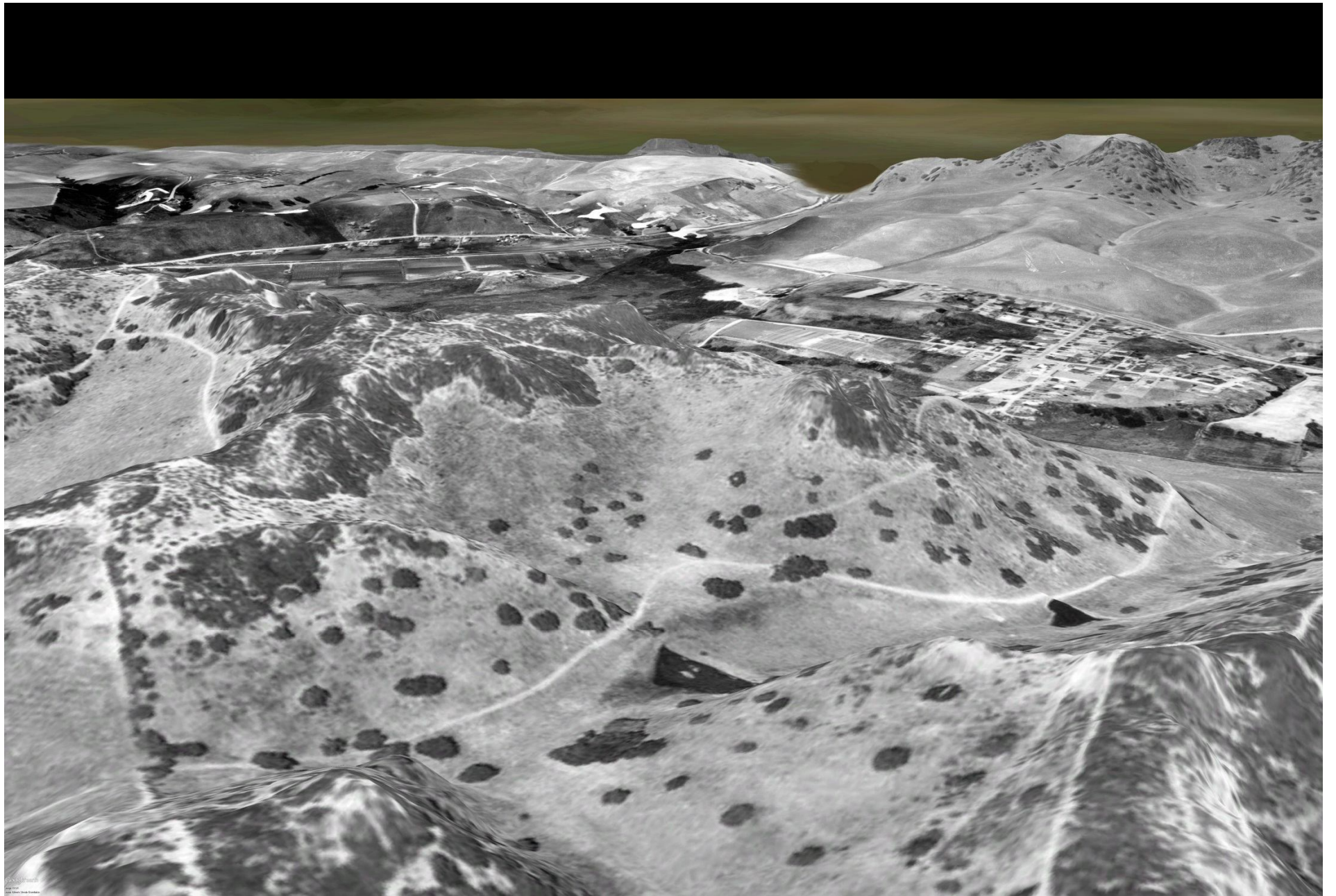
Tons of sediment erosion eliminated: 16,500 tons/year

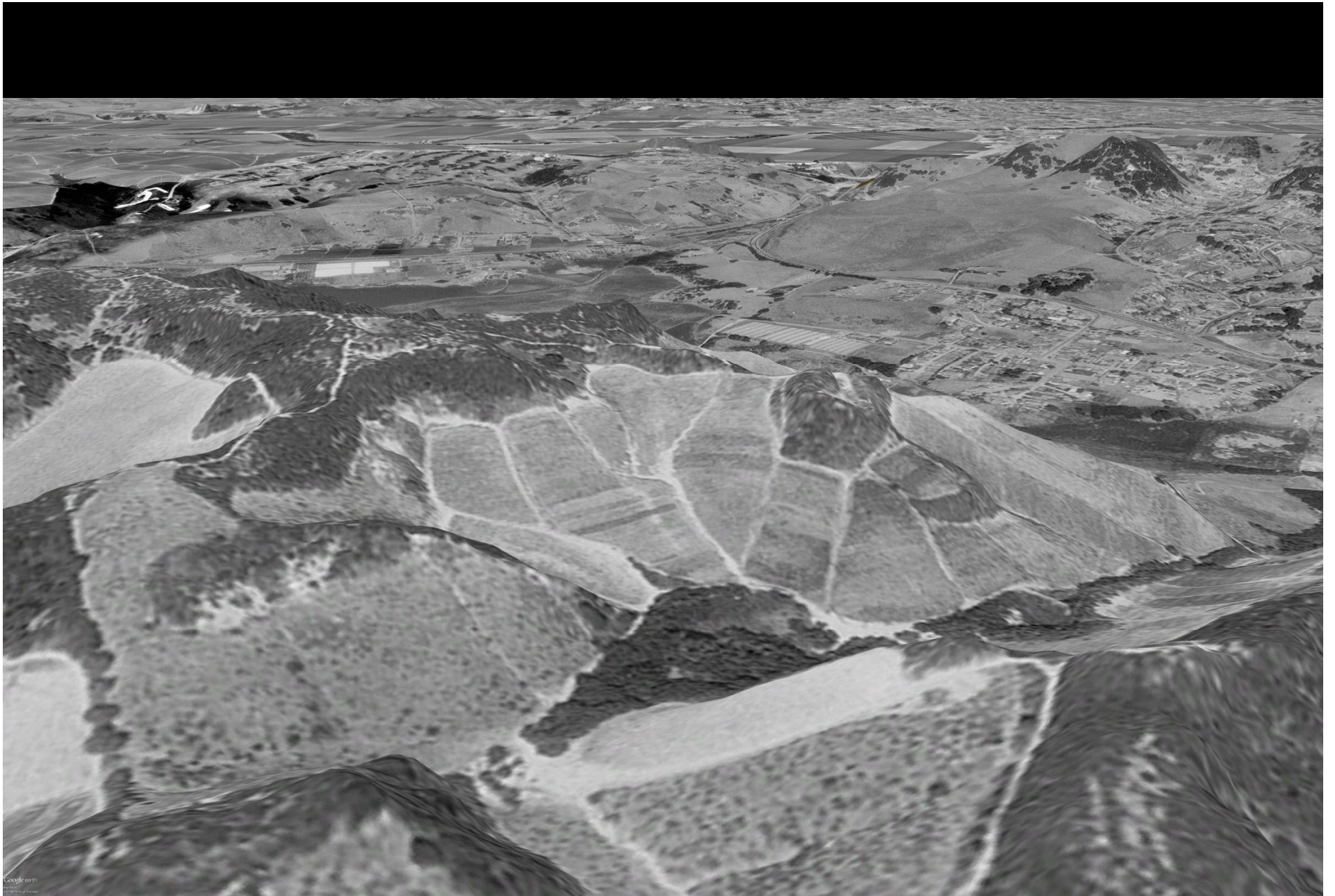
Ground Water Conservation: 2,000 acre feet/year

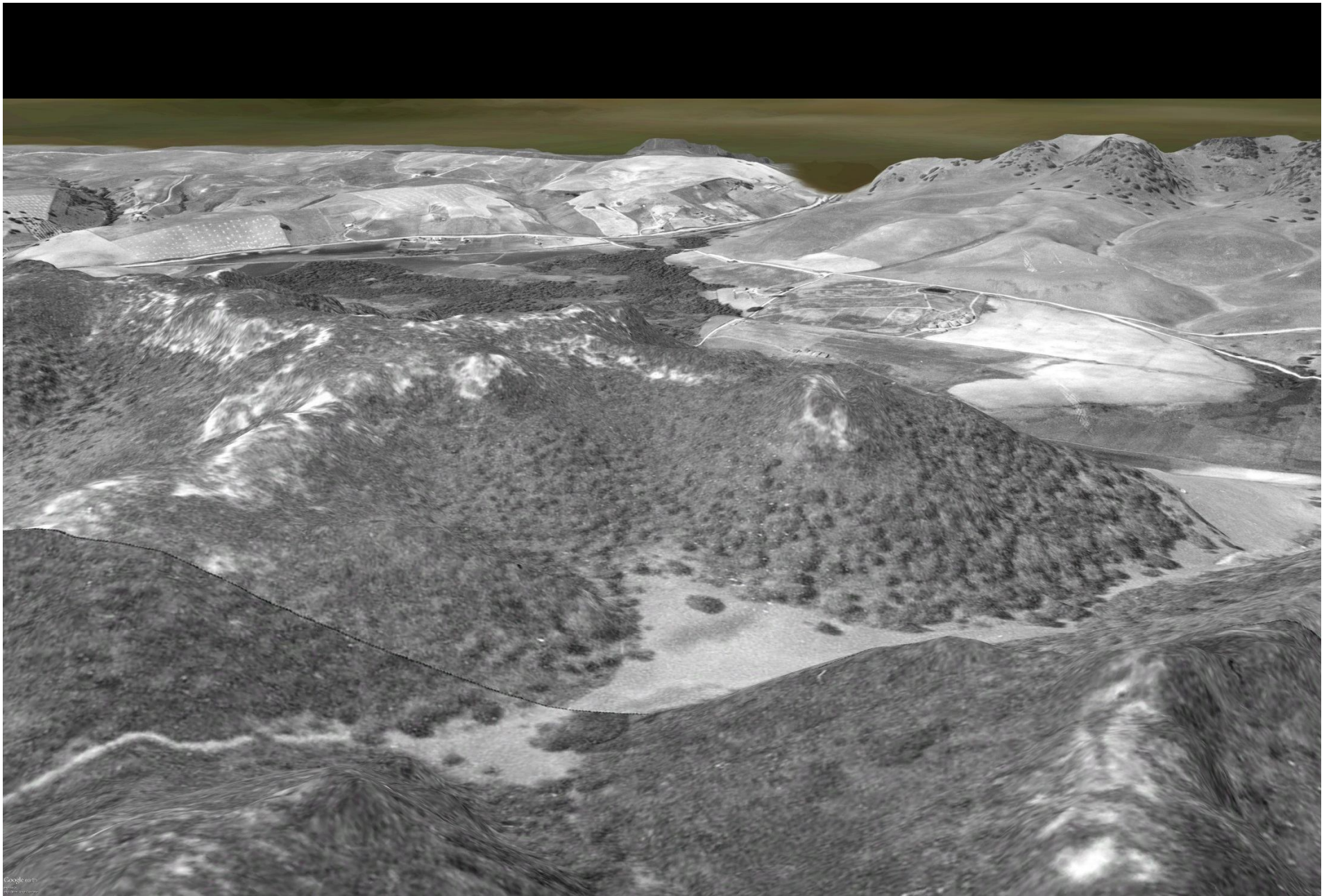
Key elements of successful leverage:

1. Sound plan built by stakeholders
2. Mitigation fund provided in single lump sum
3. Flexibility in use of fund for both acquisition and restoration/stewardship
4. Covering transactional costs
5. Ability to use fund to match other sources of funding
6. Agreement by other agency funders to pool funds



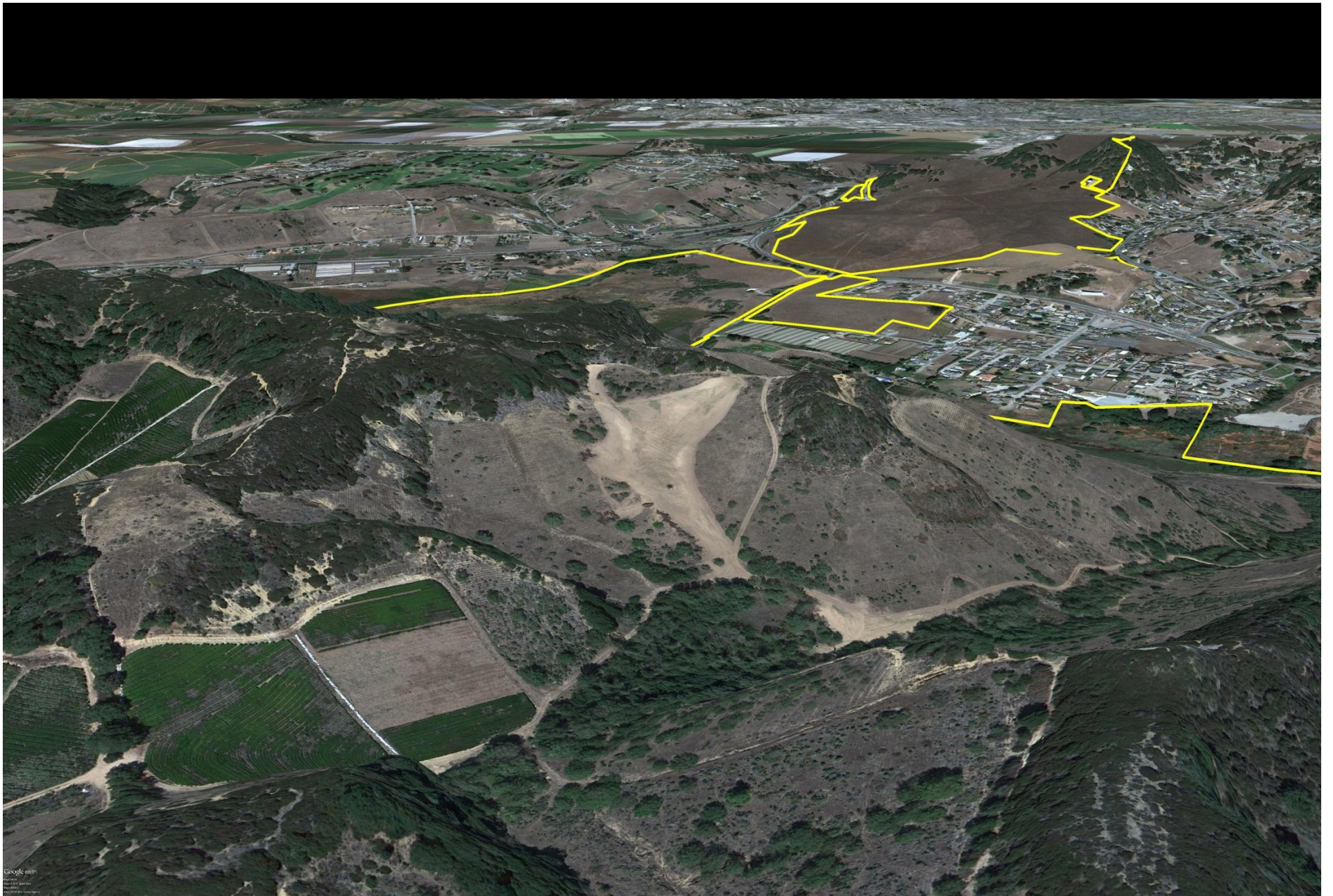


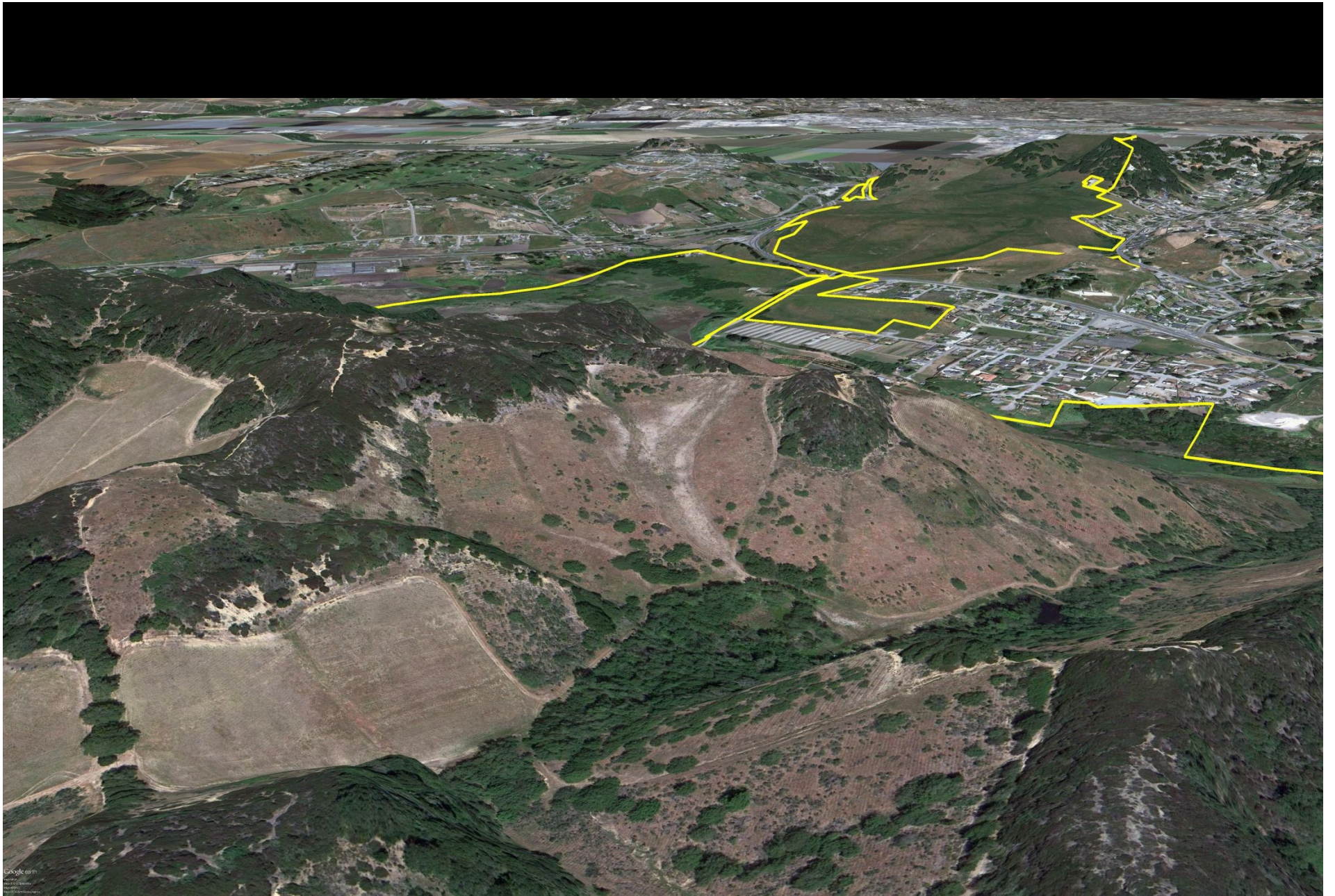


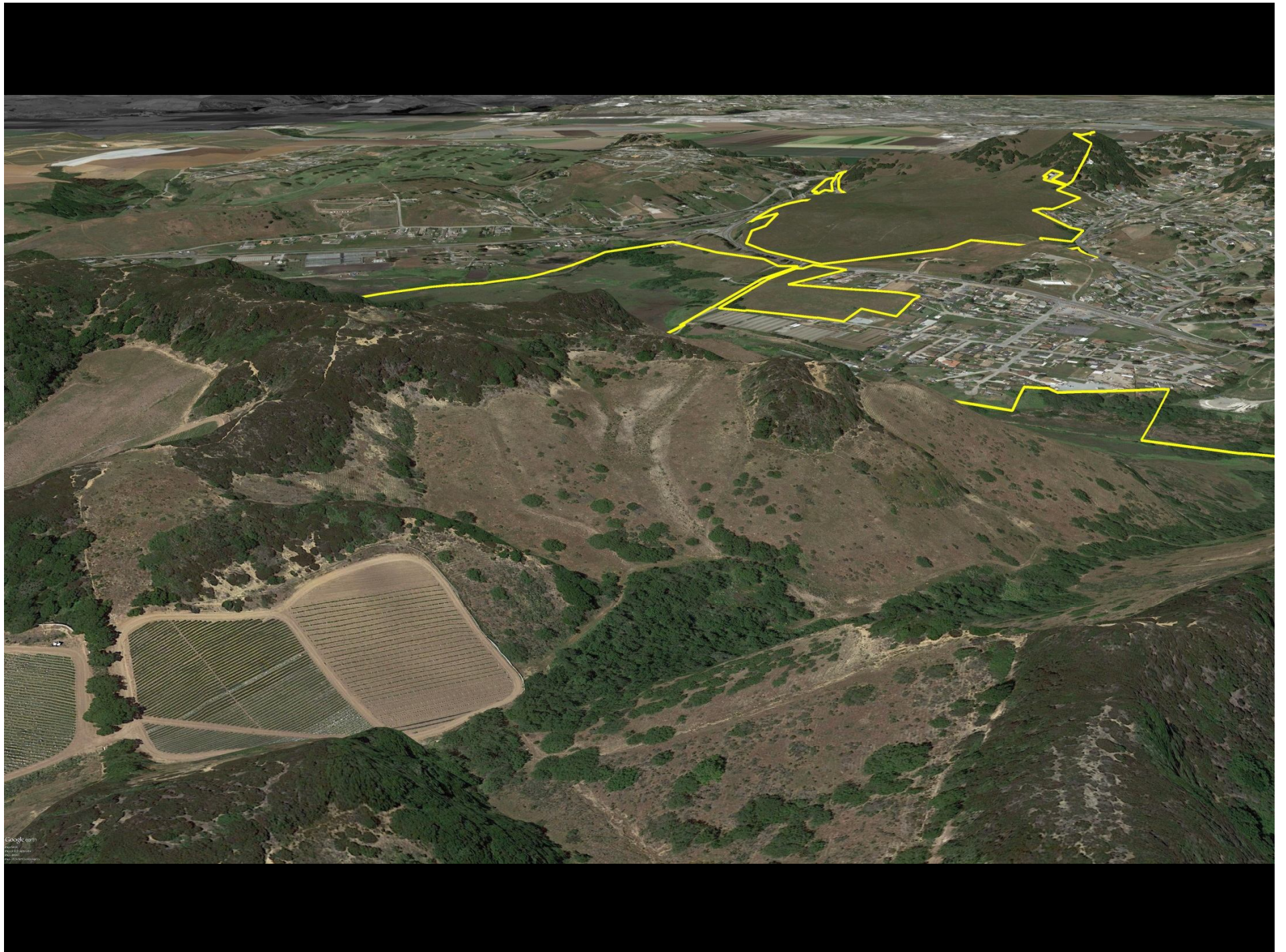


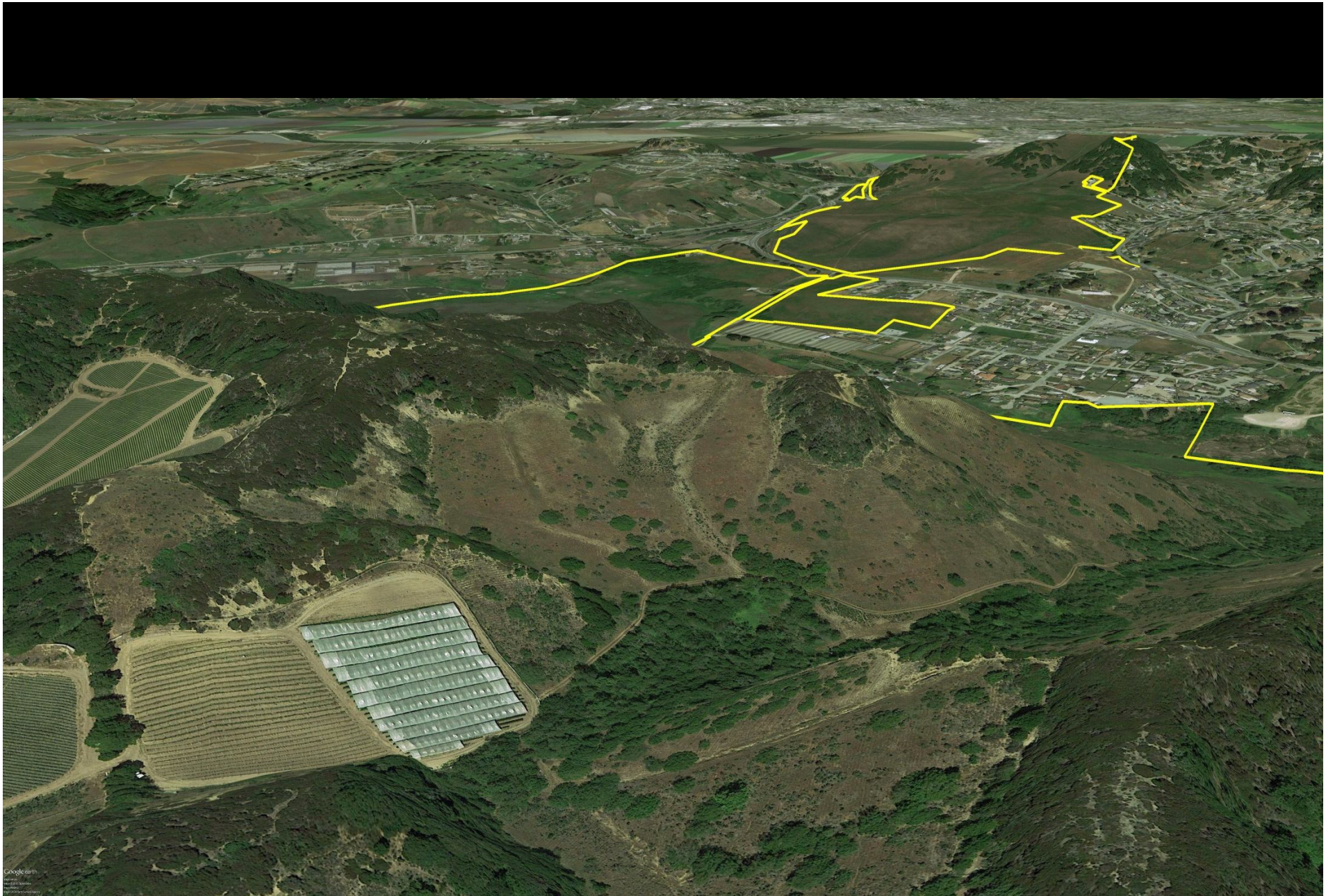


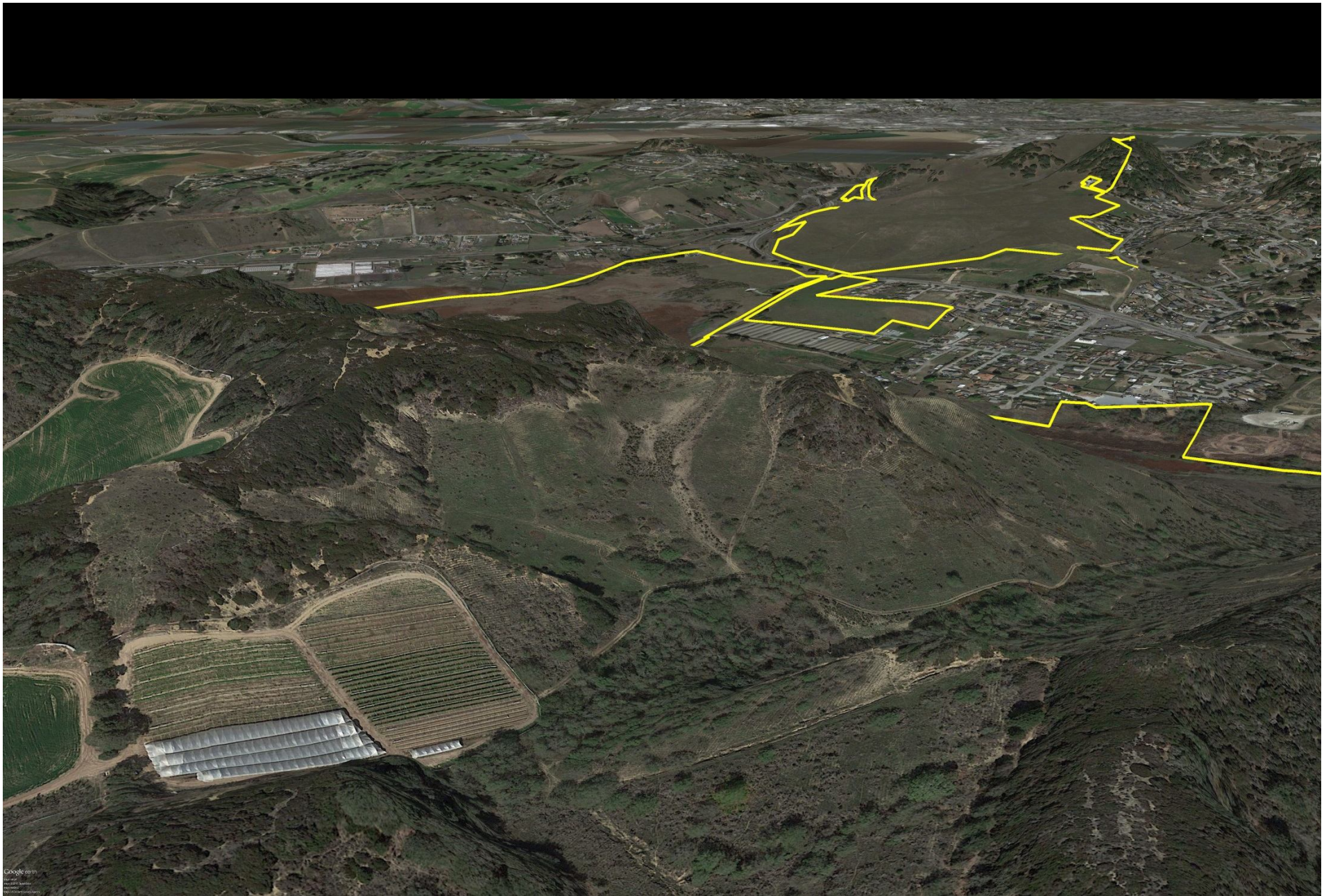












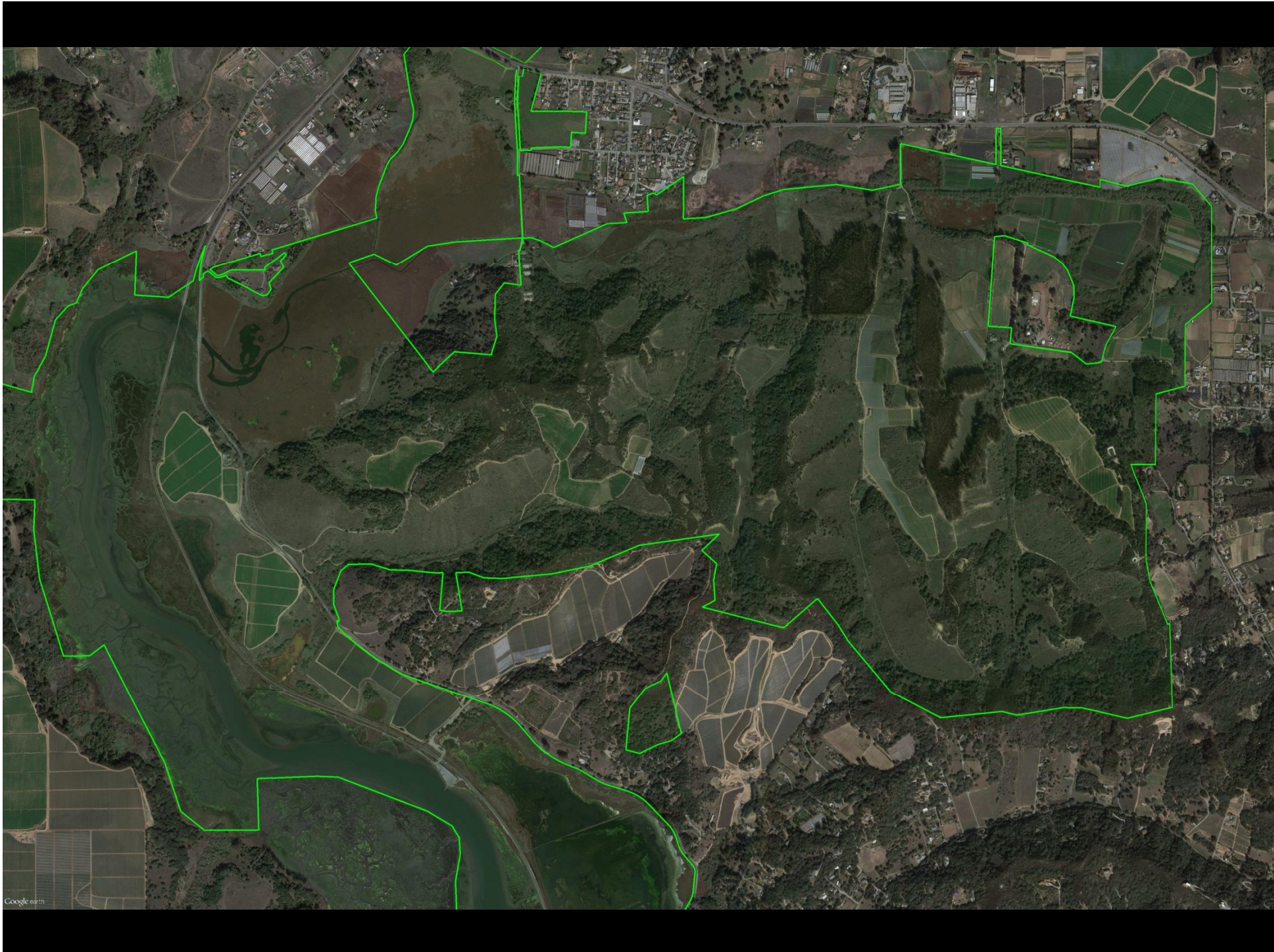








Google earth



Google earth



Google earth

