



Cambria Community Services District

Central Coast Regional Water Quality Control Board
Regular Meeting

July 13, 2017

Jerry Gruber, MPA
General Manager

Three Consecutive Winter Storm Events

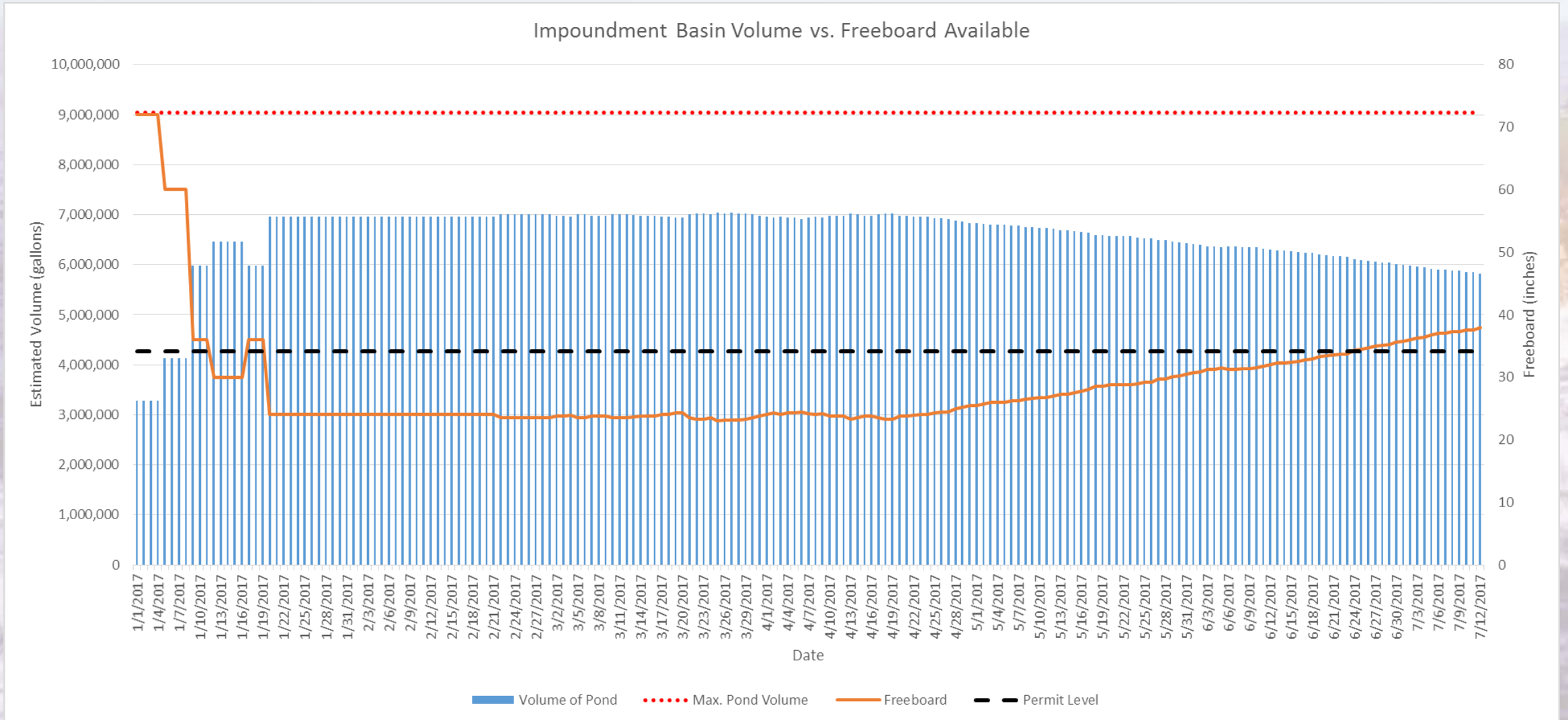
Governor Edmund G. Brown, Jr. declared three separate major disasters due to winter storms and flooding in January and February 2017

- FEMA-4301-DR, Incident Period January 3, 2017 – January 12, 2017
- FEMA-4305-DR, Incident Period January 18, 2017 – January 23, 2017
- FEMA-4308-DR, Incident Period February 1, 2017 – February 23, 2017

CCSD Response to Storm Events in January & February 2017



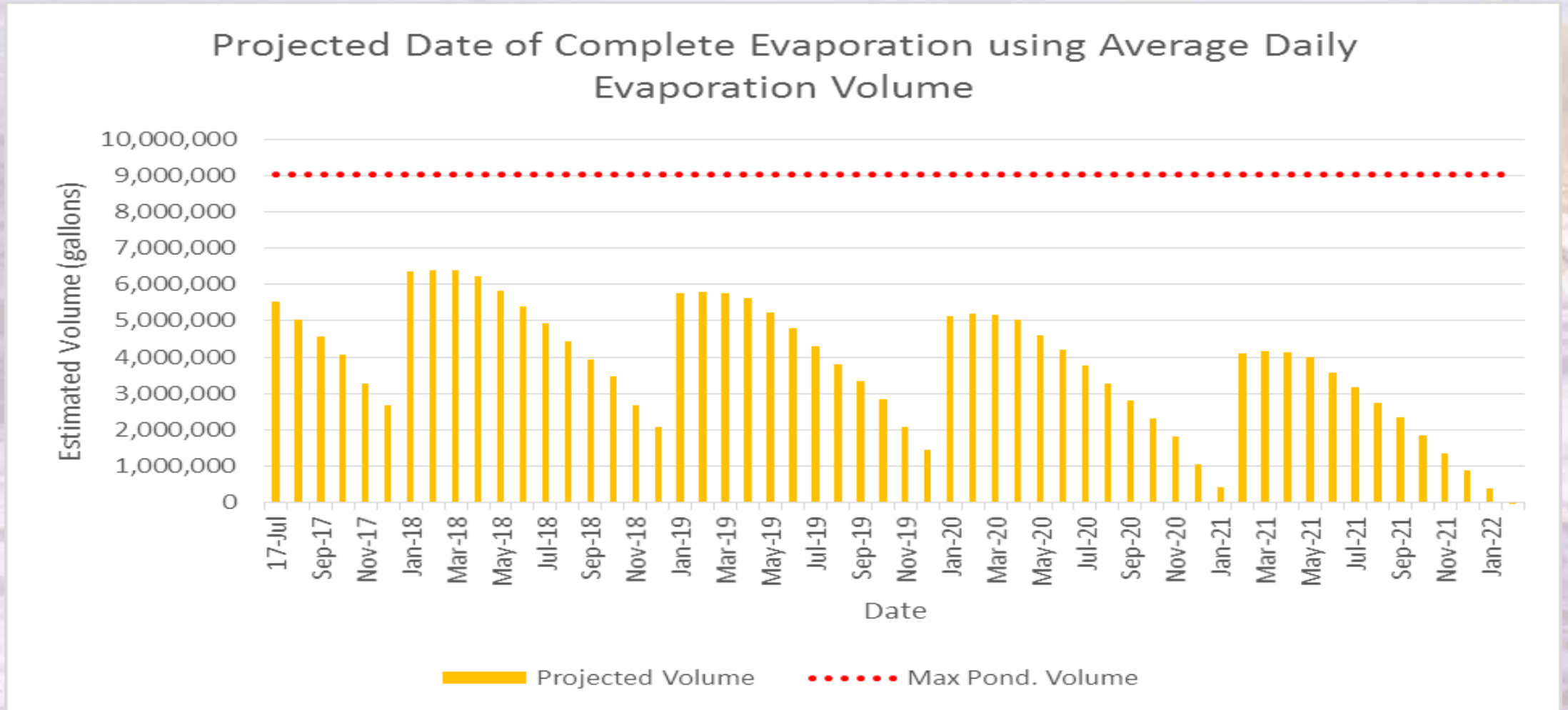
Volume of Water in Impoundment Basin



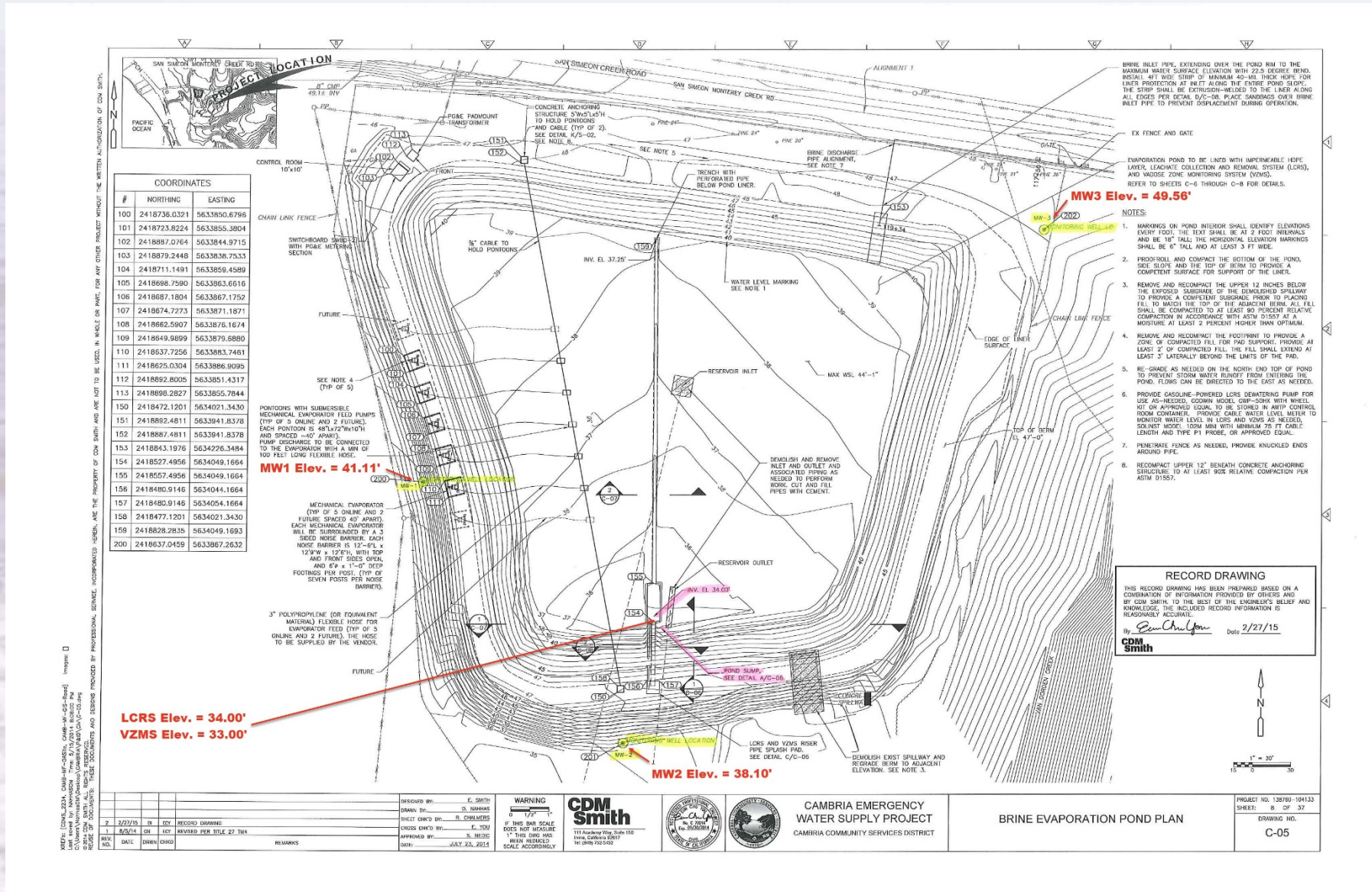
4 Options for Impoundment Basin Closure

1. Evaporation. Allow the contents of the basin to remain in place and evaporate naturally over the course of approximately 1-5 years.
2. Ion exchange to remove boron so the pond water can be discharged over CCSD's wastewater percolation ponds.
3. Reverse flow from CCSD's Wastewater Treatment Plant (WWTP). This will allow pumping of the pond water from the impoundment basin to the WWTP via the plant's effluent pipe.
4. Trucking. Trucking the pond water to the CCSD's WWTP and blending pond water with the plant effluent.

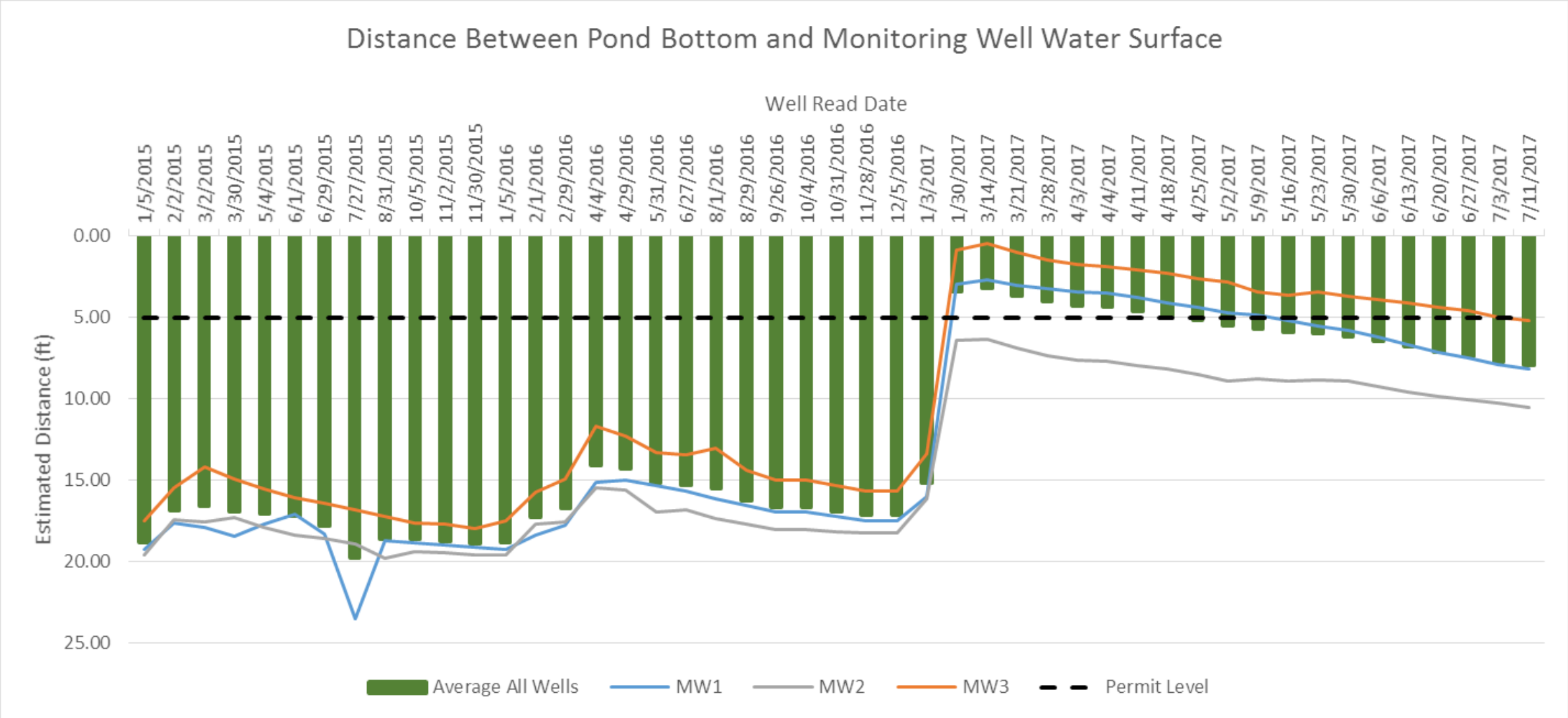
Projected Volume of Water in Impoundment Basin



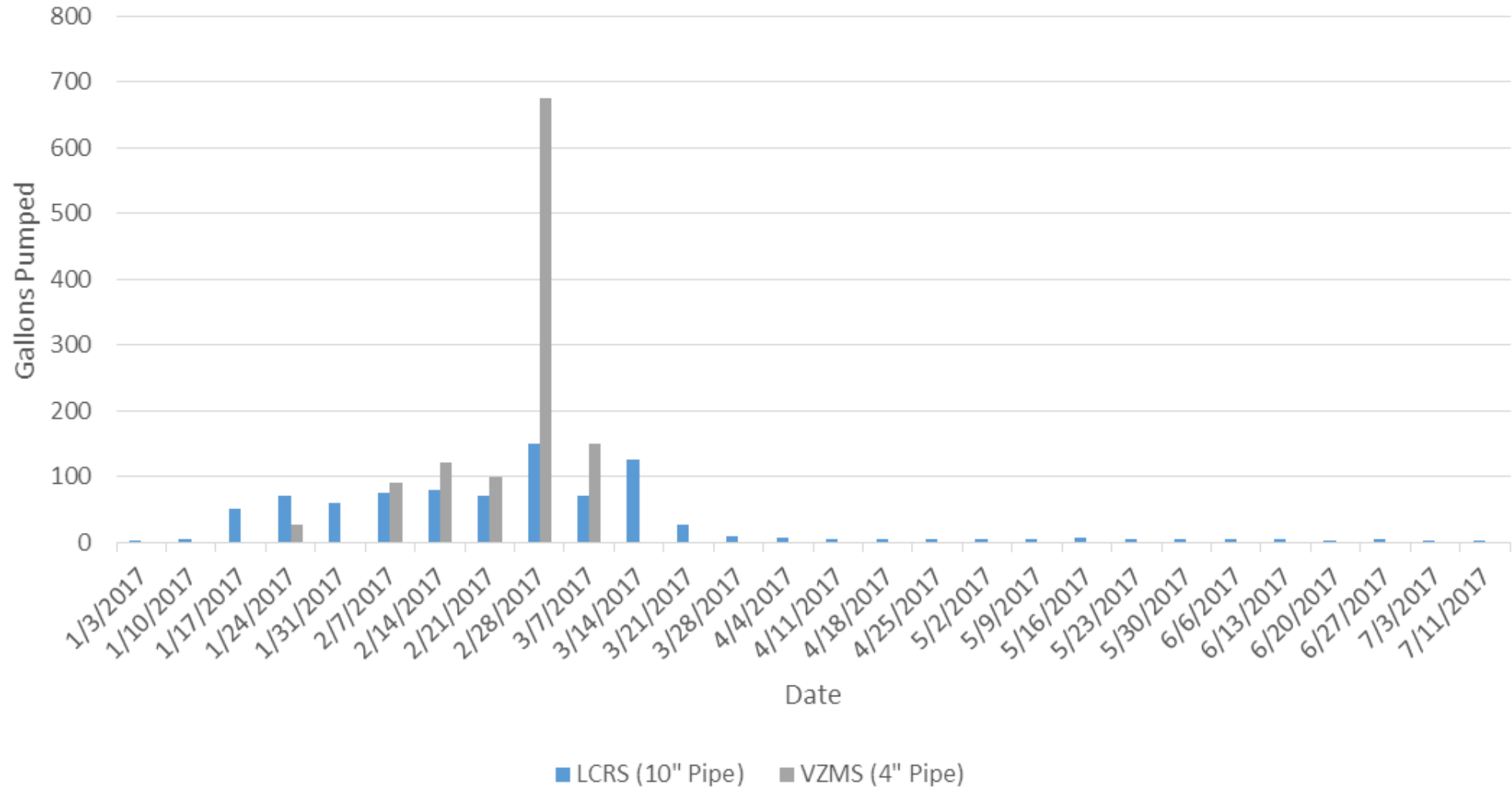
CCSD Surface Water Impoundment Basin



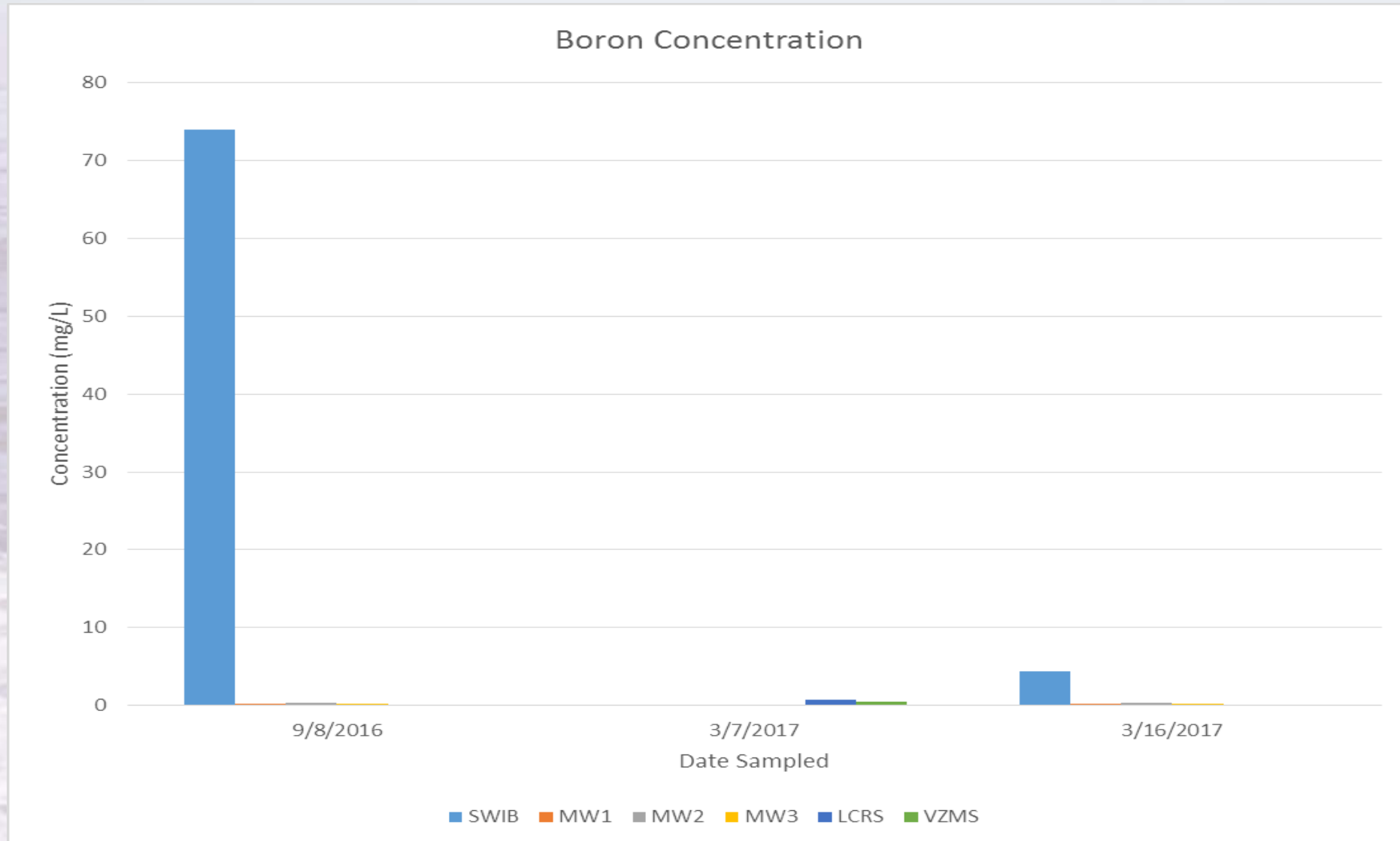
Storm Events Significantly Elevated the Groundwater Table



Volume of Water Pumped per Week from LCRS and VZMS



Boron Concentration Comparison



Progress Made to Date

- All self monitoring reports have been submitted on time since 2/15/2017.
- Daily, Weekly, and Monthly monitoring requirements are being met.
- CCSD Staff attended a bottle sampling training class on 6/22/2017 at Abalone Coast Analytical.
- CCSD Staff continues to improve internal procedures including regular training, database management, and communication.