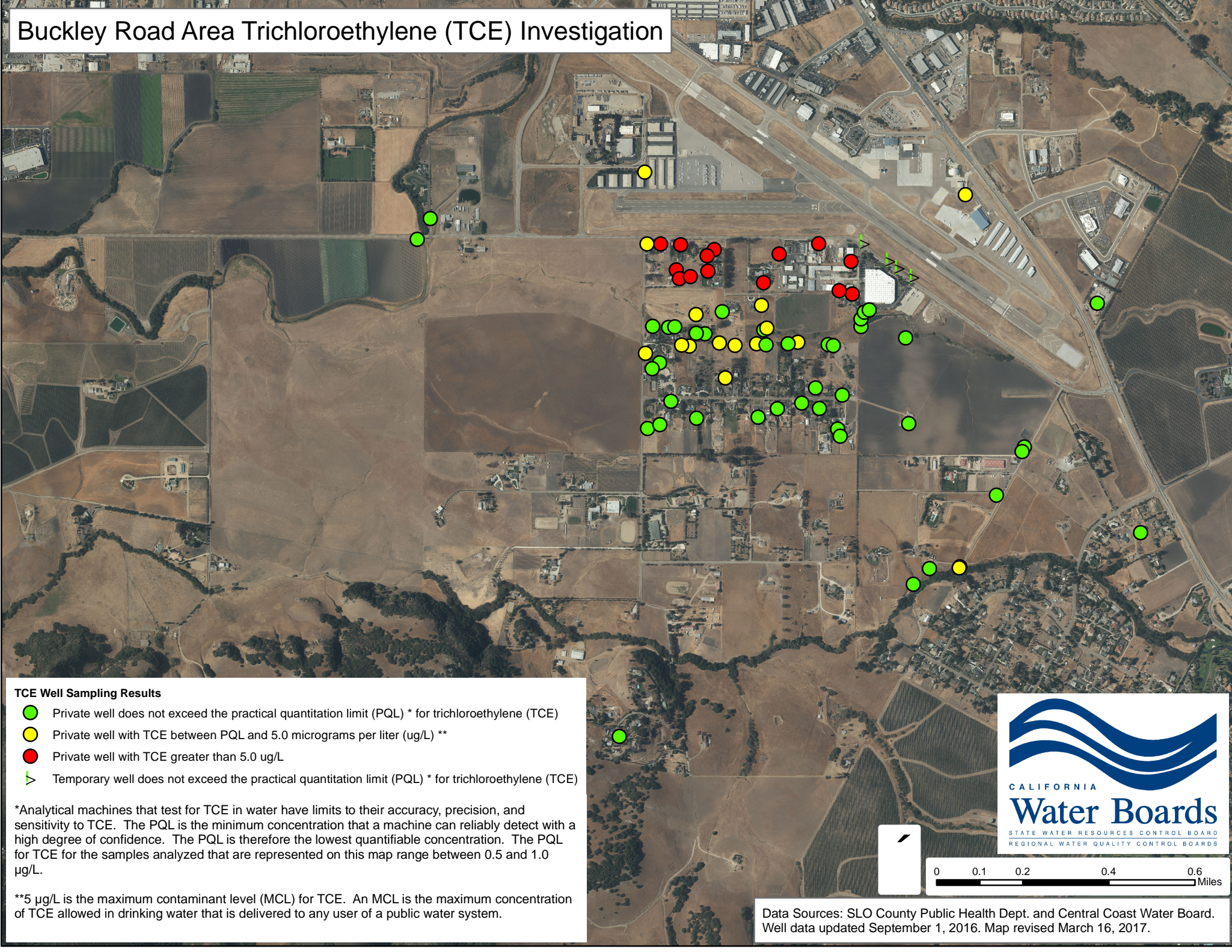






Buckley Road Area Trichloroethylene (TCE) Investigation



TCE Well Sampling Results

-  Private well does not exceed the practical quantitation limit (PQL) * for trichloroethylene (TCE)
-  Private well with TCE between PQL and 5.0 micrograms per liter (ug/L) **
-  Private well with TCE greater than 5.0 ug/L
-  Temporary well does not exceed the practical quantitation limit (PQL) * for trichloroethylene (TCE)

*Analytical machines that test for TCE in water have limits to their accuracy, precision, and sensitivity to TCE. The PQL is the minimum concentration that a machine can reliably detect with a high degree of confidence. The PQL is therefore the lowest quantifiable concentration. The PQL for TCE for the samples analyzed that are represented on this map range between 0.5 and 1.0 µg/L.

**5 µg/L is the maximum contaminant level (MCL) for TCE. An MCL is the maximum concentration of TCE allowed in drinking water that is delivered to any user of a public water system.



Data Sources: SLO County Public Health Dept. and Central Coast Water Board.
Well data updated September 1, 2016. Map revised March 16, 2017.