



Emergency Management at State and Regional Water Boards



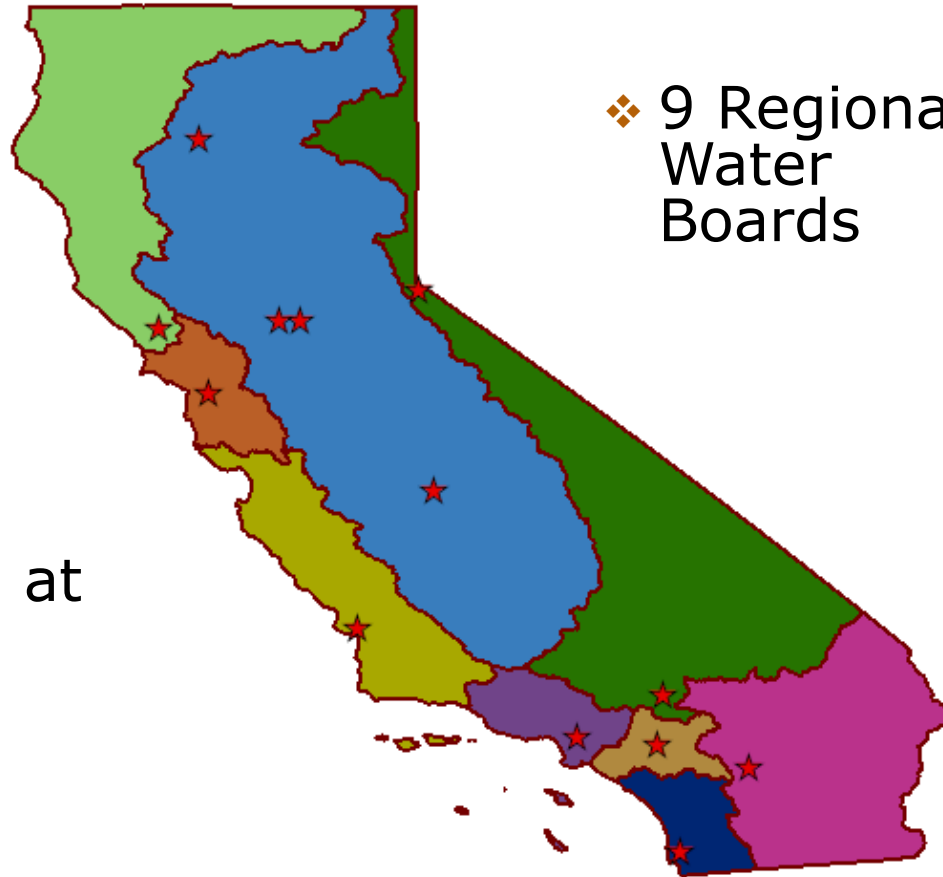
Emergency Management

- ❖ **Cal/EPA** is lead for Emergency Function-10 for Hazardous Materials and Oil Emergencies.
 - ❖ Coordinating body is Emergency Management Coordinating Committee (**ERMaC**)
- ❖ **State Water Board** – Coordination role under EF-10
- ❖ **Regional Boards** – Emergency response role and coordination role



Regional Water Boards

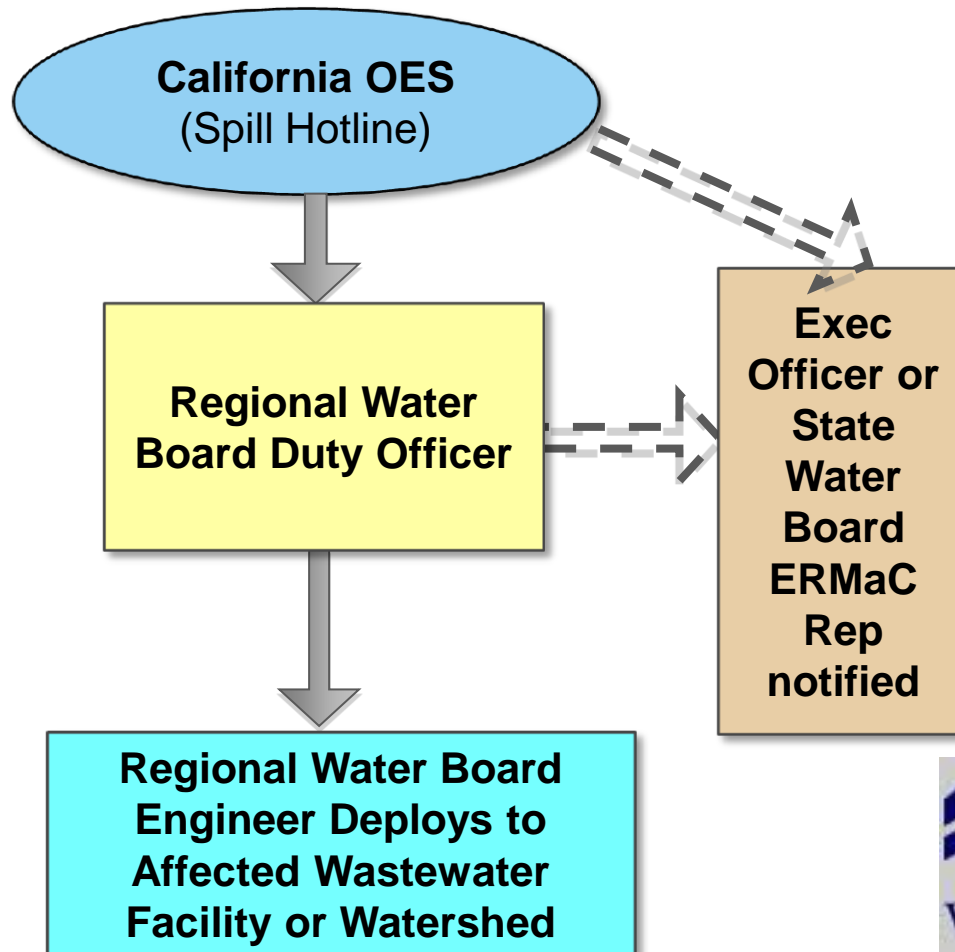
❖ Duty Officers at Each Region



❖ 9 Regional Water Boards



Emergency Response: Regional Boards

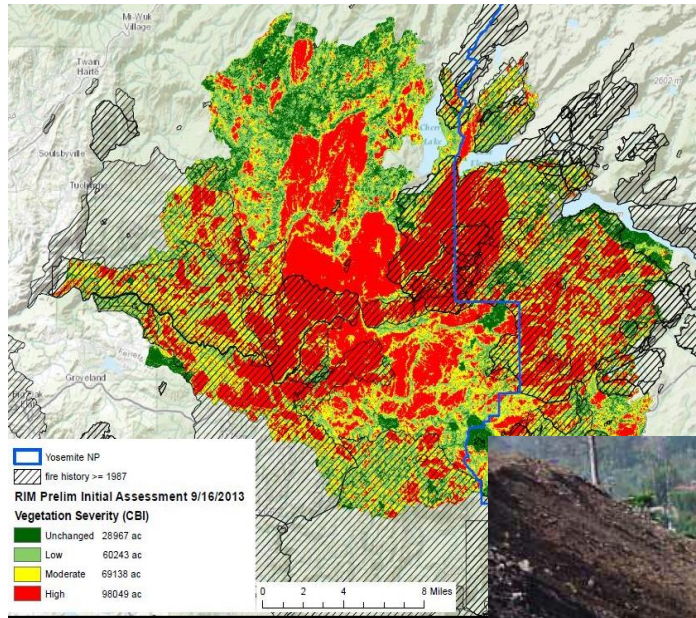


Regional Boards

- ❖ Water Quality Sampling & Analysis
- ❖ Technical assistance in evaluating hazmat spills in or near water
- ❖ Assess burned areas
- ❖ Issue cleanup orders



Regional Boards



BURNED AREA EMERGENCY RESPONSE

- Multi-agency teams
- Rapidly assess burned areas
- Sediment stabilization & capture



State Water Board ERMaC Coordination Role

- ❖ ERMaC is the formal Cal/EPA multi-agency coordinating group
- ❖ Members from each of the Cal/EPA Board, Departments and Offices
- ❖ Members from CDPH, Fish & Wildlife, California Food and Ag
- ❖ State Water Board has one representative on ERMaC



State Water Board Rim Fire Coordination

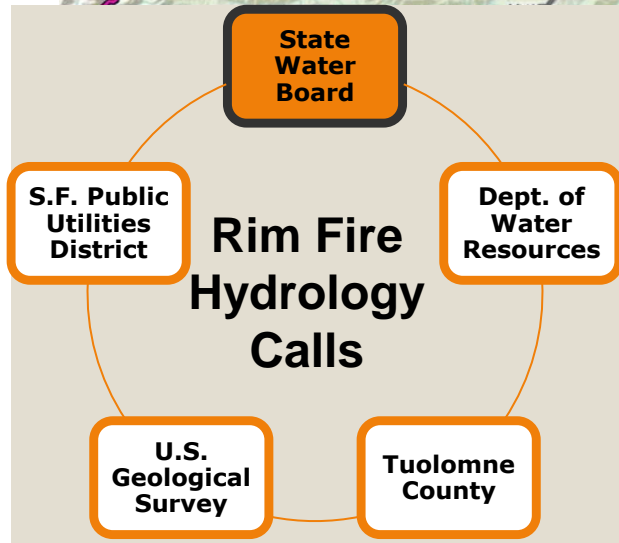
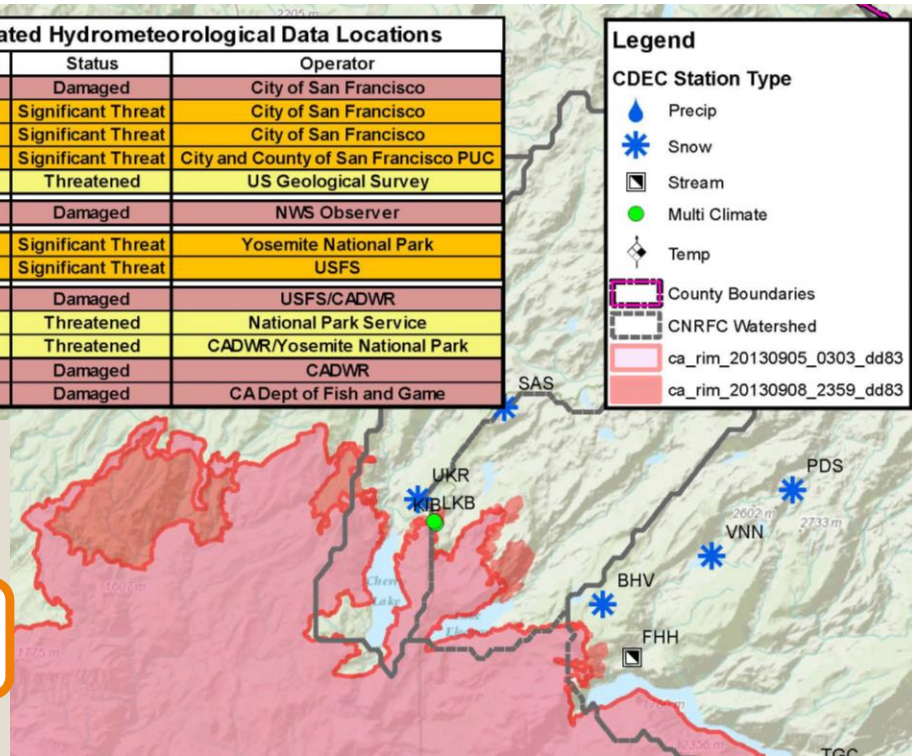
Sierra River Watershed Rim Fire Threat to Flood ER Related Hydrometeorological Data Locations

Location	CDEC ID	Type	Watershed	Status	Operator
Stream at Bucks Meadow	CBU	Stream	Tuolumne	Damaged	City of San Francisco
Stream at Oakland Camp	STO	Stream	Tuolumne	Significant Threat	City of San Francisco
Stream at R nr Oakland Camp	MTO	Stream	Tuolumne	Significant Threat	City of San Francisco
Stream at Hetch Hetchy	FHH	Stream	Tuolumne	Significant Threat	City and County of San Francisco PUC
Stream at Grand Canyon	TGC	Stream	Tuolumne	Threatened	US Geological Survey
Station Mather	MTR	Precip	Tuolumne	Damaged	NWS Observer
Station Olive Meadow	BHV	Snow	Tuolumne	Significant Threat	Yosemite National Park
Station Upper Kibbie	UKR	Snow	Tuolumne	Significant Threat	USFS
Station Lower Kibbie	LKB/KIB	Multi Climate	Tuolumne	Damaged	USFS/CADWR
Station White Wolf	WHW	Multi Climate	Merced	Threatened	National Park Service
Station Gin Flat	GIN/GFL	Multi Climate	Merced	Threatened	CADWR/Yosemite National Park
Station House Meadow	DGH	Multi Climate	Merced	Damaged	CADWR
Station near Lumsden Campground	TLS	Temp	Tuolumne	Damaged	CA Dept of Fish and Game

Legend

CDEC Station Type

- Precip (Blue water drop icon)
- Snow (Blue snowflake icon)
- Stream (Black line with cross-ticks icon)
- Multi Climate (Green circle icon)
- Temp (Black diamond with cross icon)
- County Boundaries (Dashed line icon)
- CNRFWS Watershed (Red shaded area icon)
- ca_rim_20130905_0303_dd83 (Light red shaded area icon)
- ca_rim_20130908_2359_dd83 (Dark red shaded area icon)



Questions?

