

**State Water Resources Control Board
Groundwater Ambient Monitoring and Assessment (GAMA) Program
Priority Basin Project**

**Antelope Valley Study Unit
Wrap-Up Meeting**

Wednesday, December 17th, 2008

1:00 - 3:00 pm

Palmdale Water District

2029 E Avenue Q

Palmdale, CA 93550

AGENDA

- Introductions:
Meeting Overview
- GAMA Program Overview:
State Water Board
- Study Unit Assessment Review:
US Geological Survey
- Wrap-up and Adjourn

Background: The study unit includes the DWR defined groundwater basin of Antelope Valley in the South Lahontan Hydrologic Province.

The GAMA Program was created as a result of groundwater quality concerns. Main objectives of GAMA are to improve statewide ambient groundwater quality monitoring and assessment and to increase the availability of information about groundwater quality to the public.

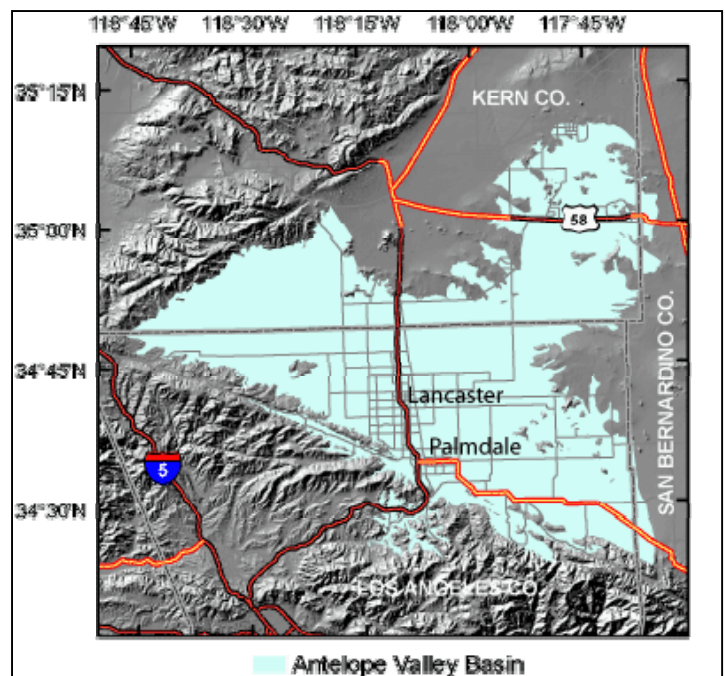
Participation in GAMA is voluntary.

Directions:

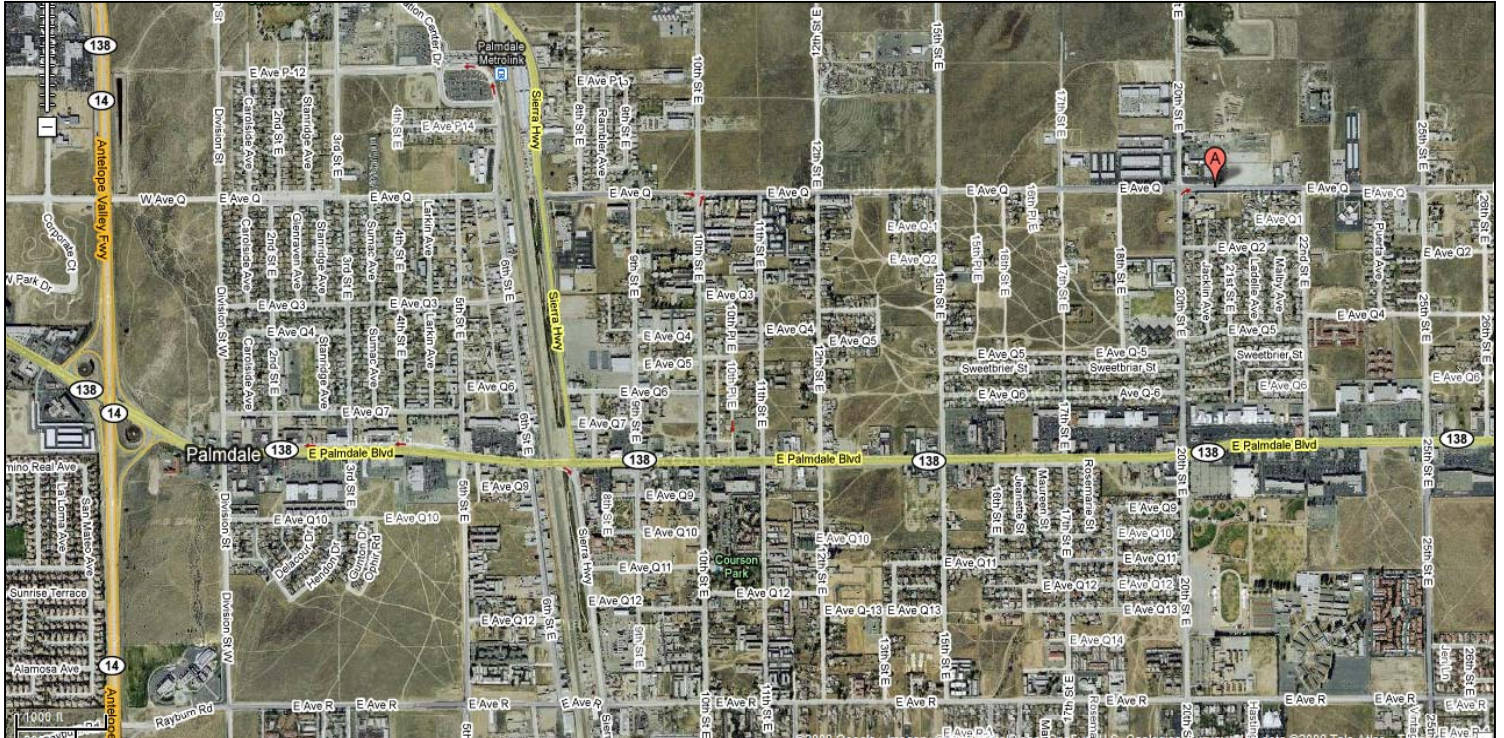
See next page for map.

Note:

Meeting date is subject to change. Please confirm your attendance with Julie Saturnio at 916 341-5860 or jsaturnio@waterboards.ca.gov. For more information, please visit www.waterboards.ca.gov/gama or contact John Borkovich at jborkovich@waterboards.ca.gov.



Palmdale Water District
2029 E Avenue Q
Palmdale, CA 93550
Phone: (661) 947-4111



<http://maps.google.com/maps?f=q&hl=en&geocode=&q=2029+E+Avenue+Q+Palmdale,+ca&sl=38.966667,56.55&sspn=0.006415,0.009656&g=%2B38%C2%B0+58'+56.55&ie=UTF8&ll=34.584818,-118.101954&spn=0.02717,0.038624&t=h&z=15>

Directions

Take the State Hwy 14 N exit toward Lancaster/Palmdale
Merge onto CA-14 N - 34.3 mi
Take exit 35 for Palmdale Blvd/State Hwy 138 E toward Palmdale - 0.3 mi
Turn right at CA-138/W Palmdale Blvd - 2.1 mi
Turn left at 20th St E - 0.5 mi
Turn right at E Ave Q
Destination will be on the left - 459 ft

