

**State Water Resources Control Board
Groundwater Ambient Monitoring and Assessment (GAMA) Program
Priority Basin Project**

**Cascades / Modoc Study Unit
Wrap-Up Meeting**

Thursday, February 23rd, 2012
1:00-3:00 pm

**City of Weed
Council Chambers
550 Main Street
Weed, CA 96094**

AGENDA

Introductions; Meeting Overview

- Program Overview – *SWRCB*
- Basin Assessment Implementation;
Preliminary Results – *USGS*
- Wrap-up and Adjourn

Background: The Cascades/Modoc study unit consists of six study areas in Siskiyou, Modoc, Shasta, Lassen, Tehama, Butte and Plumas counties. (See map at right.)

The GAMA Program was created as a result of statewide groundwater quality concerns and was later expanded by the Groundwater Quality Monitoring Act of 2001 (AB 599). The primary objectives of the GAMA Program are to improve comprehensive groundwater quality monitoring and to increase public availability of groundwater quality information. Participation is voluntary. The State Water Board implements the GAMA Program with the US Geological Survey and Lawrence Livermore National Laboratory.

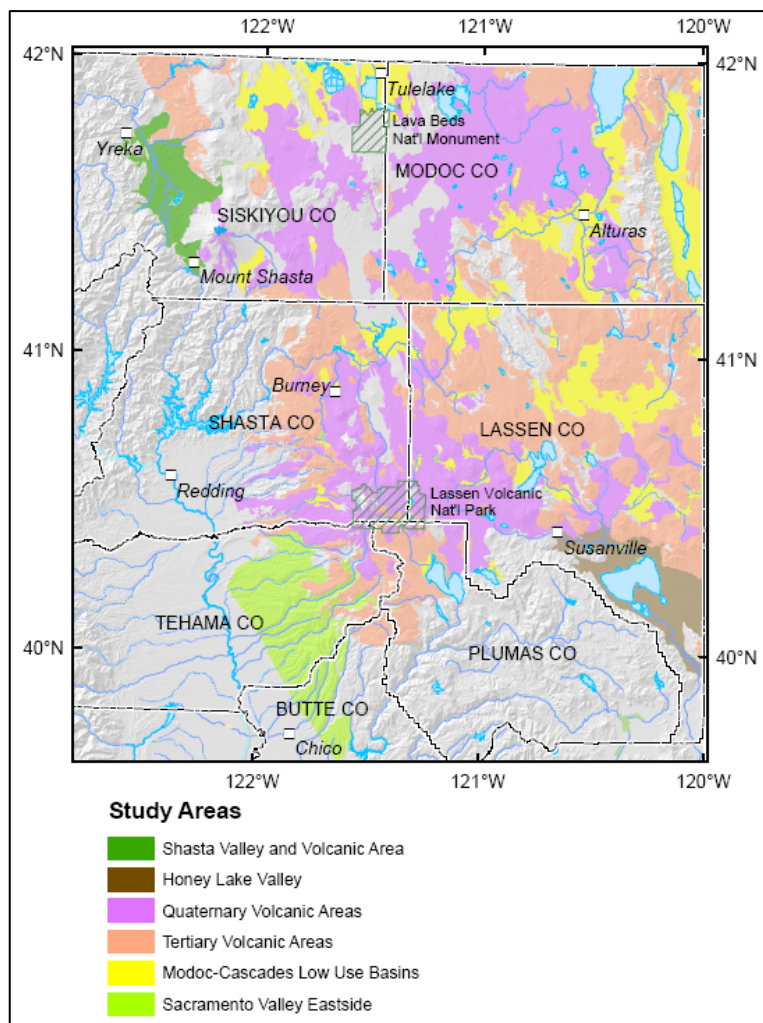
Please visit www.waterboards.ca.gov/gama for more program information, a copy of the agenda, and a map to the meeting site. You may also see <http://ca.water.usgs.gov/gama/> for additional technical information.

Directions:

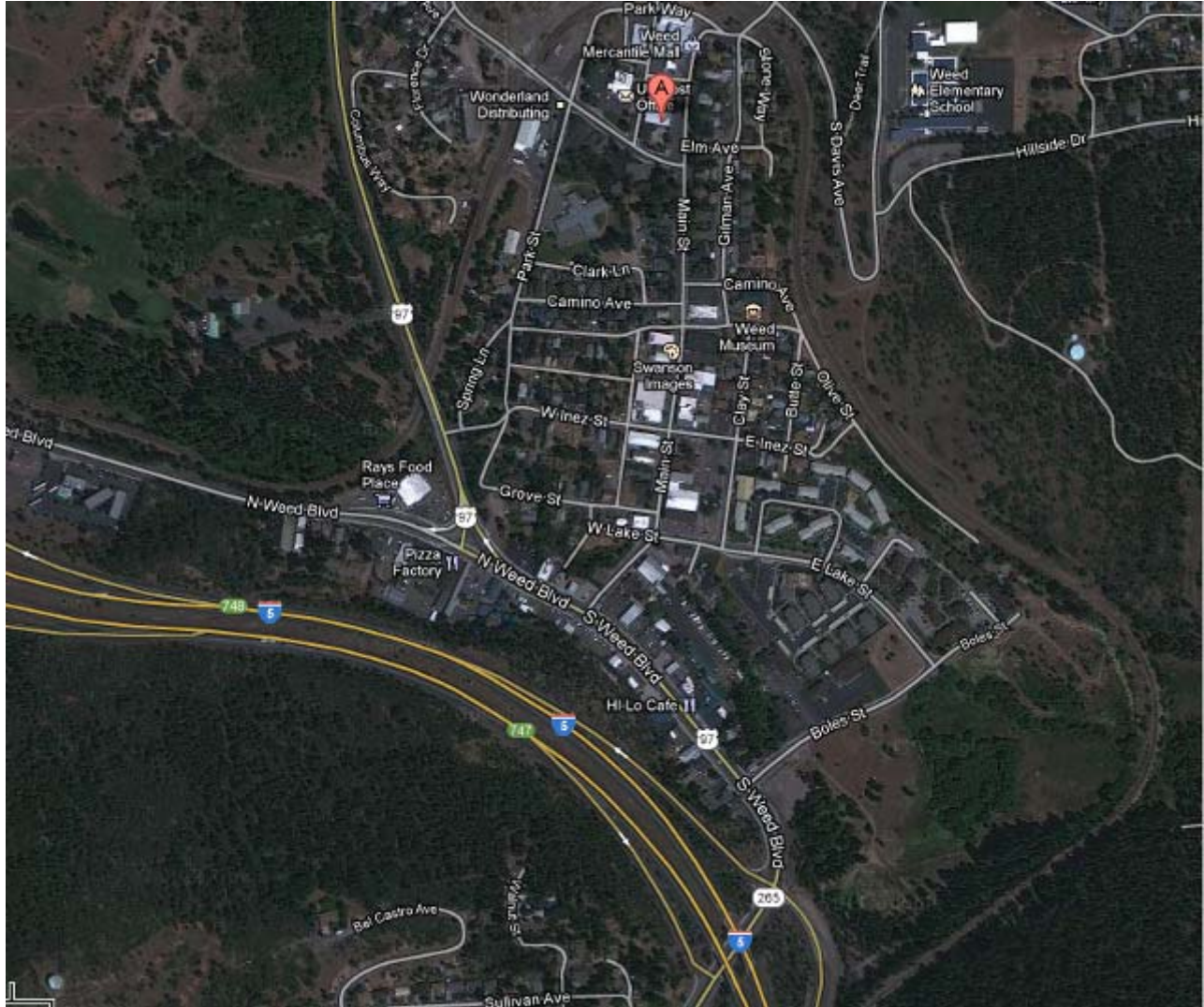
See next page for map.

Note:

Meeting date is subject to change. Please confirm your attendance with Dori Bellan at 916 341-5502 or dbellan@waterboards.ca.gov. For more information, please visit www.waterboards.ca.gov/gama.



**City of Weed
Council Chambers
550 Main Street
Weed, CA 96094**



Directions:

From I-5 North:

<http://maps.google.com/maps?saddr=Sacramento,+CA&daddr=550+Main+St,+Weed,+CA+96094&hl=en&ll=41.423872,-122.386322&sspn=0.013499,0.01929&geocode=FUS1TAldgCTC-Cn5I4OycsaagDHbfxl0qmfkg%3BFWQheAldP4-0-Cm92DfpznTOVDGZ-eUroxG8g&oq=sac&vpsrc=6&gl=us&mra=ls&t=h&z=8>

I-5 North to Weed

Take exit 747, Hwy 97 N toward Central Weed (0.3 mi)

Turn right onto Hwy 97 North / South Weed Blvd (0.3 mi)

Take the second right onto Main Street (0.4 mi)

City Hall is on the left