

**State Water Resources Control Board  
Groundwater Ambient Monitoring and Assessment (GAMA) Program  
Priority Basin Project  
Borrego - Central Desert - Low Use Basins of the Desert Study Unit  
Kick-Off Meeting**

Wednesday, November 5th, 2008  
1:00 pm – 3:00 pm

Yucca Valley Community Center  
57090 Twentynine Palms Hwy  
Yucca Valley, CA 92284

**AGENDA**

- Introductions:  
Meeting Overview
- GAMA Program Overview:  
State Water Board
- Study Unit Assessment Review:  
US Geological Survey
- Wrap-up and Adjourn

**Background:** The study areas fall in San Bernardino, Kern, Los Angeles, Riverside, San Diego and Imperial counties.

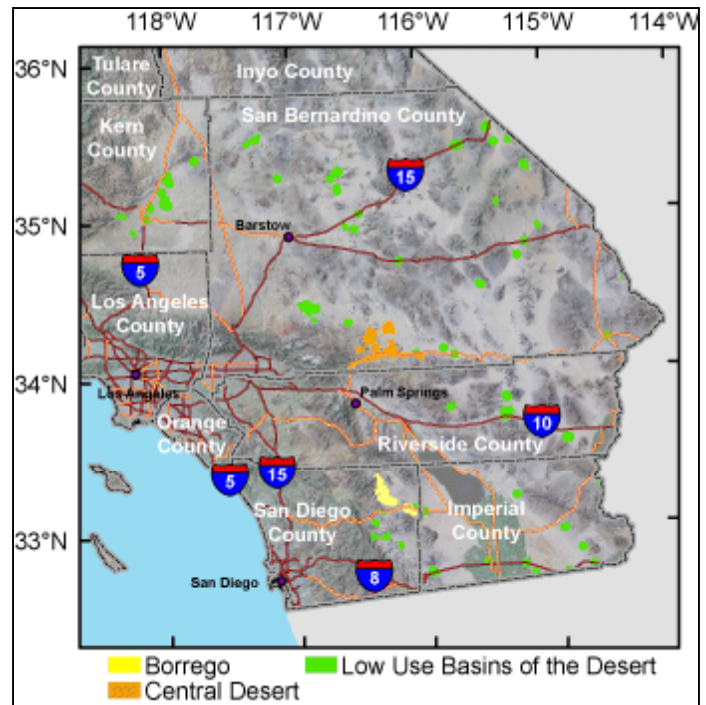
The GAMA Program was created as a result of groundwater quality concerns. Main objectives of GAMA are to improve statewide ambient groundwater quality monitoring and assessment and to increase the availability of information about groundwater quality to the public. Participation in GAMA is voluntary.

**Directions:**

See next page for map.

**Note:**

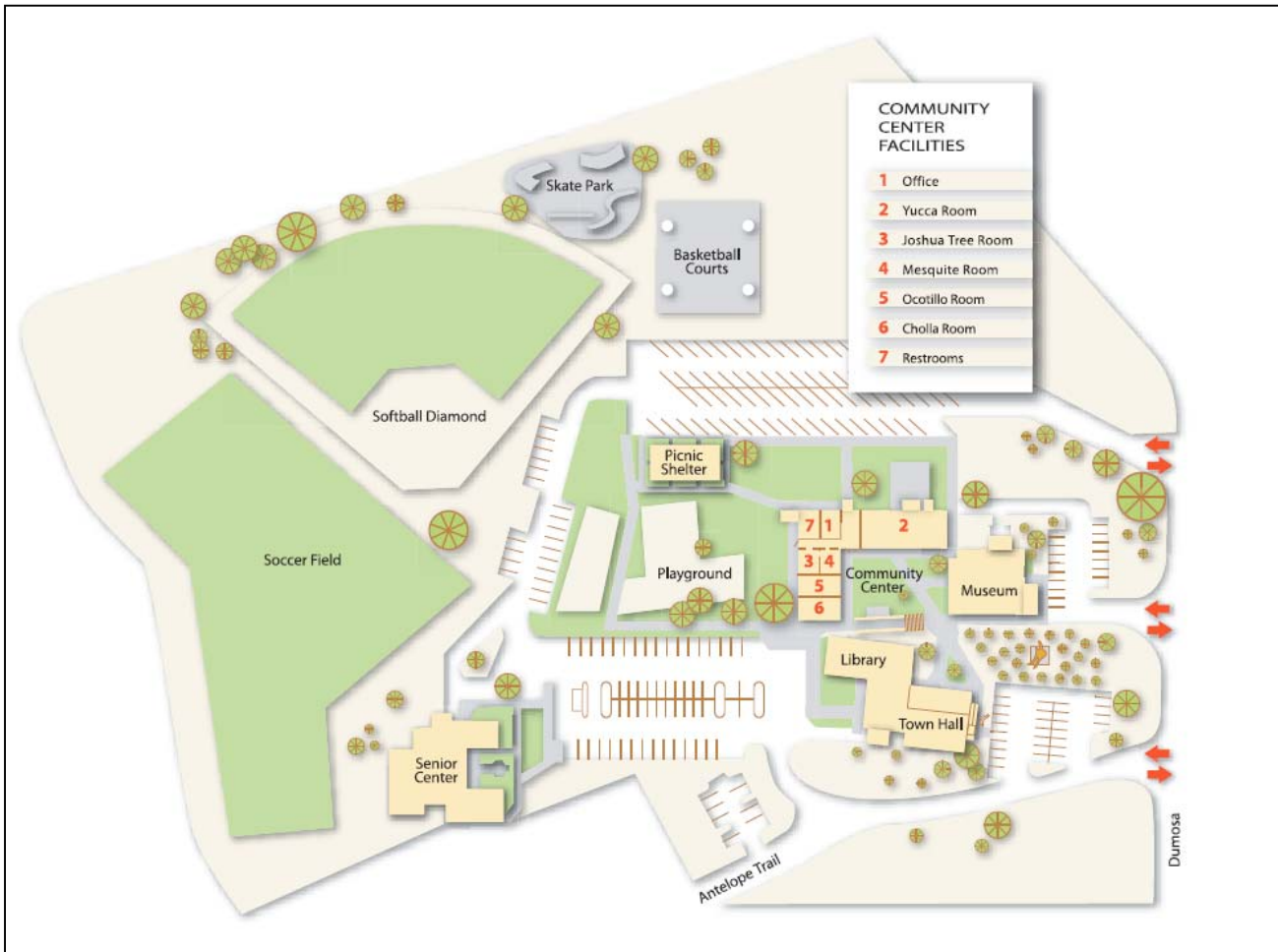
Meeting date is subject to change. Please confirm your attendance with Julie Saturnio at 916 341-5860 or [jsaturnio@waterboards.ca.gov](mailto:jsaturnio@waterboards.ca.gov). For more information, please visit [www.waterboards.ca.gov/gama](http://www.waterboards.ca.gov/gama) or contact John Borkovich (GAMA Program Manager) at [jborkovich@waterboards.ca.gov](mailto:jborkovich@waterboards.ca.gov).



Revised October 28, 2008

Yucca Valley Community Center  
57090 Twentynine Palms Hwy  
Yucca Valley, CA 92284

Cholla Room, (Room 6 on map below)



## Directions

<http://maps.google.com/maps?f=d&saddr=ontario+airport,+ca&daddr=Dumosa+Ave&hl=en&geocode=%3BFVGwCAIde5wP-Q&mra=ls&sl=34.018695,-117.007845&sspn=0.875313,1.235962&ie=UTF8&ll=33.942221,-116.625366&spn=0.876099,1.235962&t=h&z=10>

### Traveling East on Interstate 10 From Ontario Airport

Travel East on I-10  
Take exit 117 for State Hwy 62 toward Yucca Valley/Twentynine Palms (1 mile)  
Merge onto CA-62 E (20.6 miles)  
Turn left at Dumosa Ave  
Facility is on the left