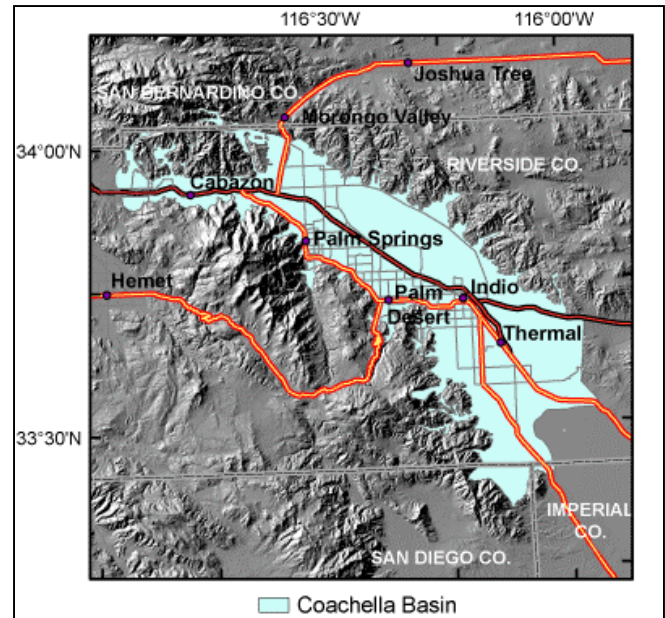


**State Water Resources Control Board  
Groundwater Ambient Monitoring and Assessment (GAMA) Program  
Statewide Basin Assessment in the Coachella Study Unit  
Informational Meeting**

Tuesday, February 13, 2007  
1:00 – 3:00 pm  
Workforce Development Center Riverside County  
44-199 Monroe Street, Ste. B  
Indio, CA 92201

**AGENDA**

- Introductions; Meeting Overview
- Participating Agencies and Organizations
- GAMA Program Overview – State Water Board
- Basin Assessment Implementation – US Geological Survey
- Sharing of Existing Water Quality Information – State Water Board with All
- Wrap-up and Adjourn



***Directions:***

See next page for map.

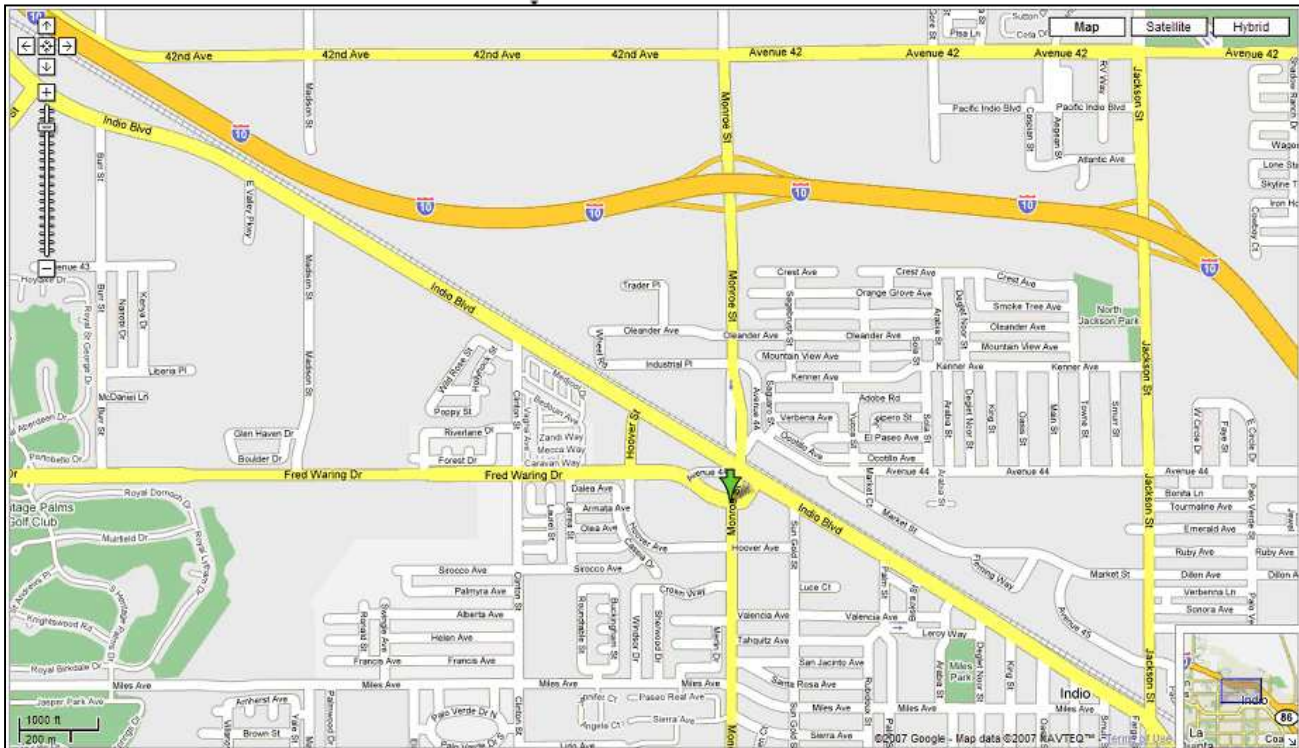
***Note:***

Meeting date is subject to change. Please confirm your attendance with Julie Saturnio at 916 341-5860 or [jsaturnio@waterboards.ca.gov](mailto:jsaturnio@waterboards.ca.gov). For more information, please visit [www.waterboards.ca.gov/gama](http://www.waterboards.ca.gov/gama) or contact John Borkovich at [jborkovich@waterboards.ca.gov](mailto:jborkovich@waterboards.ca.gov).



*Revised January 29, 2007*

Workforce Development Center Riverside County  
44-199 Monroe Street, Ste. B  
Indio, CA 92201



**From Ontario Airport:**

- Head east on E Airport Dr toward North Way
- Turn left at S Archibald Ave
- Take the ramp onto I-10 E toward San Bernardino (86 miles)
- Take the Monroe St exit to Central Indio
- Turn right at Monroe St

**From San Diego:**

- Take I-15 N (46 miles)
- Take the CA-79 S exit to Temecula/Indio (17 miles)
- Slight left at CA-371 (20 miles)
- Turn right at CA-74 (4 miles)
- Continue on Pines to Palms Hwy (19 miles)
- Turn right at CA-111 S (10 miles)
- Turn left at Monroe St (1 mile)