

**State Water Resources Control Board
Groundwater Ambient Monitoring and Assessment (GAMA) Program
Priority Basin Project**

**Madera/Chowchilla Study Unit
Wrap-Up Meeting**

Wednesday, December 16th, 2009
1:00-3:00 pm

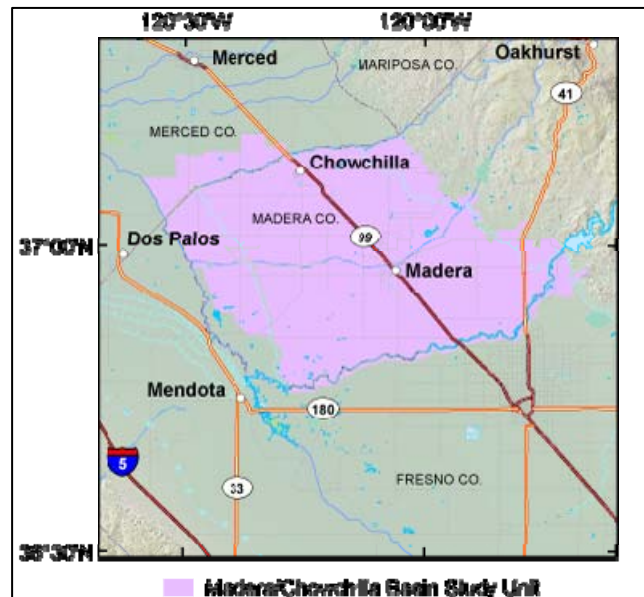
City of Madera
Conference Room
205 West 4th Street
Madera, CA 93637

AGENDA

- Introductions; Meeting Overview
- GAMA Program Overview:
State Water Board
- Study Unit Assessment Review:
US Geological Survey
- Sharing of Existing Water Quality Information
- Wrap-up and Adjourn

Background:

The Madera/Chowchilla study unit consists of the Madera and Chowchilla groundwater subbasins and is one of 35 GAMA study units in California.



The GAMA Program was created as a result of statewide groundwater quality concerns. The primary objectives of the GAMA Program are to improve comprehensive groundwater quality monitoring and to increase public availability of groundwater quality information. Participation is voluntary. The State Water Board implements the GAMA Program with the US Geological Survey and Lawrence Livermore National Laboratory.

Please visit www.waterboards.ca.gov/gama for more program information, a copy of the agenda, and a map to the meeting site. You may also see <http://ca.water.usgs.gov/gama/> for additional technical information.

Directions:

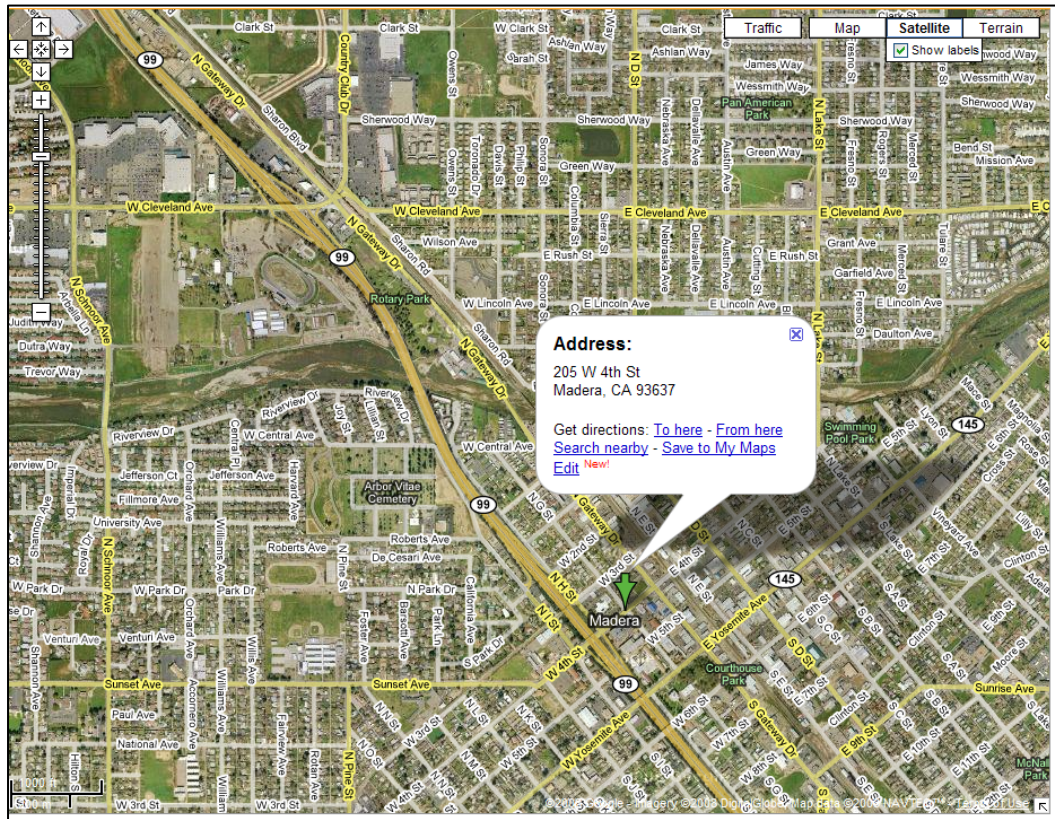
See next page for map.

Note:

Meeting date is subject to change. Please confirm your attendance with Julie Saturnio at 916 341-5860 or jsaturnio@waterboards.ca.gov. For more information, please visit www.waterboards.ca.gov/gama.

**City of Madera
205 4th Street
Madera, CA 93637**

<http://maps.google.com/maps?f=q&hl=en&geocode=&q=205+west+4th+street+madera,+ca&sl=37.0625,-95.677068&sspn=47.704107,83.320313&ie=UTF8&ll=36.968375,-120.067306&spn=0.024447,0.039911&t=h&z=15&iwloc=addr>



Directions:

From the North

Use Hwy 99—Travel South
Take exit 154 toward Central Madera
Turn left at N I St
Turn left at W 4th St

From the South

Use Hwy 99—Travel North
Take exit 154 for Fourth St
Turn right at W 4th St

