

The background features several horizontal, wavy bands of light blue color that create a sense of movement and depth. These bands are layered, with some appearing more prominent than others, and they span across the width of the slide.

# **REGIONAL WATER BOARD AGRICULTURAL REGULATORY PROGRAMS**

# REGIONS DEVELOPED OR DEVELOPING CONDITIONAL WAIVERS or WDRs FOR AGRICULTURAL DISCHARGES



# AGRICULTURAL ACREAGE

Region	Total Estimated Acres in Region	Total Acres Covered under Waivers	Percent Covered
*1	259,288	80,000	31%
*2	138,240	66,565	48%
3	435,000	389,128	89%
4	105,000	85,096	81%
5	6,000,000	4,836,986	81%
*7	700,000	480,000	69%
8	81,000*	0**	
9	200,000	110,000	55%
Total	7,837,528	6,047,775	<b>77%</b>

# AGRICULTURAL LANDS REGULATORY PROGRAM

## Issue

- Clean Water Act section 303(d) listed waters impaired by agricultural sources.
- Waters impaired by non-point source discharges
- Protect high quality waters

## Objective

- To monitor, assess, and control the impact to receiving waters caused by discharges from agricultural lands.
- Improve WQ in impaired waters and protect high quality waters by requiring and assisting growers to develop and implement Management Plans and Practices

# **AGRICULTURAL CONDITIONAL WAIVER TERMS AND CONDITIONS**

- Develop and implement management plans to address exceedances
- Implement and evaluate management practices to achieve compliance
- Monitoring and Reporting Program
- Comply with applicable TMDLs and Implementation Plans

# AGRICULTURAL REGULATORY PROGRAM REQUIREMENTS

## Group or Individual Enrollment



## Monitoring and Reporting Program

## Education and Outreach



## Implement and Reporting on Management Plans and Practices



# **AGRICULTURAL CONDITIONAL WAIVER TERMS AND CONDITIONS**

- Take all reasonable steps to prevent discharge of pollutants
- Maintain any facility or control system in good working order
- Comply with water quality standards specified in the Basin Plan
- Promptly notify Regional Board of exceedances

# AGRICULTURAL REGULATORY PROGRAM VARIABILITY

- Variable Regulatory Models
  - Varying water quality threat
  - Types of agricultural operations
  - Receiving water conditions
  - Grower enrollment criteria



# AGRICULTURAL REGULATORY PROGRAM

## ENROLLMENT CRITERIA

Regional Board	Enrollment Criteria
3	Regulates dischargers of irrigated lands where water is applied for producing <b>commercial crops</b> , from which irrigated or stormwater runoff that could affect water quality.
4	Regulate discharges from irrigated lands that engage in <b>commercial production</b> agricultural activities.
5	Discharger is defined as the owner and/or operator of irrigated lands that discharge or have the potential to discharge waste that could <b>directly or indirectly reach surface waters</b> .

# CONDITIONAL WAIVER DOES NOT REGULATE

Regional Board	Does Not Include
3	All dischargers must submit NOI. Regional Board staff will determine status.
4	Lands irrigated for the purpose of gardening and/or hobby growing are not intended to be regulated by the Conditional Waiver for Irrigated Lands.
5	Discharges of waste from irrigated lands used for gardens, vineyards, small orchards, small pastures, and small greenhouses that are used for the purpose of producing crops and/or animals for personal consumption or use, and the product or service is not sold commercially.

Comparison of Key Issues Across the Regions	North Coast	SF Bay	Central Coast	Los Angeles	Central Valley	Lahontan	Colorado River	Santa Ana	San Diego
Existing Waiver for Agricultural Lands									
Developing Waiver Agricultural Lands									
Requires Payment of Fees									
Coalition Group or Individual Monitoring									
Groundwater Monitoring and Requirements									
Tiered Requirements Based on Risk/Size									
Requires Farm-Level Management Plans									
Requires Nutrient Management Plans Prepared by Qualified Professional									
Specifies Minimum Requirements for Farm-Level Management Plans									
Specifies or Encourages Best Management Practices									
Third Party Certifications									

# MONITORING AND REPORTING PROGRAM ELEMENTS

Program Elements	Region 3	Region 4	Region 5
Monitoring and Reporting Program	X	X	X
Ambient	1	1	1
Rotating	1		1
Systematic	2	2	1
Targeted	2	2	1
Probabilistic	2	2	1
Group Resources	X	X	X

# LONG-TERM MONITORING AND REPORTING PROGRAM

## BASED ON MONITORING DATA RESULTS

- Groundwater monitoring and protection
- Monitoring Requirements
  - Depend on level of threat to water quality
- Parameters
  - Based on pesticide use, historic data, toxicity, background levels
  - Chronic water column toxicity testing
- Schedule and Frequency
  - Based on periods of use, known periods of detection and exceedance

# CENTRAL COAST AGRICULTURAL REGULATORY PROGRAM

Criteria	Tier 1	Tier 2	Tier 3
Does not use chlorpyrifos or diazinon which are documented to cause toxicity	X		
Located >1000 feet from a surface impaired waterbody.	X		
Potential to discharge nitrogen to groundwater. <50 acres and < 1000 feet from well	X		
Approved third party certification.	X		
Discharger applies chlorpyrifos or diazinon		X	
Located within 1000 feet of a surface waterbody listed for toxicity		X	
Potential to discharge nitrogen to groundwater. > 50 acres < 500 acres. Within 1000 ft of a well		X	
Grows crop types with high potential to discharge nitrogen to groundwater. > 500 acres			X
Applies chlorpyrifos or diazinon. Runoff to a waterbody listed for toxicity or pesticides.			X

# CENTRAL COAST MONITORING AND REPORTING PROGRAM

- Tier 1, Tier 2, and Tier 3 Dischargers must conduct surface water and groundwater monitoring and reporting in compliance with MRP
- Monitoring and reporting conditions are different for each tier, based on level of waste discharge and effect on water quality.
- Monitoring data used to determine Tier Criteria

# CENTRAL COAST CORE MONITORING DESIGN

- Water bodies and specific monitoring sites selected based on criteria specified in the MRP.
- Waters classified as “High Quality Waters”
- Water bodies which are on the 303(d) list of impaired water bodies for pollutants associated with agricultural practices;
- Water bodies which have evidence of serious nitrate impairment
- Groundwater contamination in areas associated with intensive agricultural activity; and
- Water bodies which have documented Beneficial Use impairment from pollutants associated with agricultural activities and which are proposed for future listing on the 303(d) list.



# LOS ANGELES CONDITIONAL WAIVER REQUIREMENTS

- Prepare monitoring plans
- Report annually
- Develop Water Quality Management Plans
- Implement Water Quality Management Plans
- NOI, MRPP, WQMP required to be submitted within 12 months

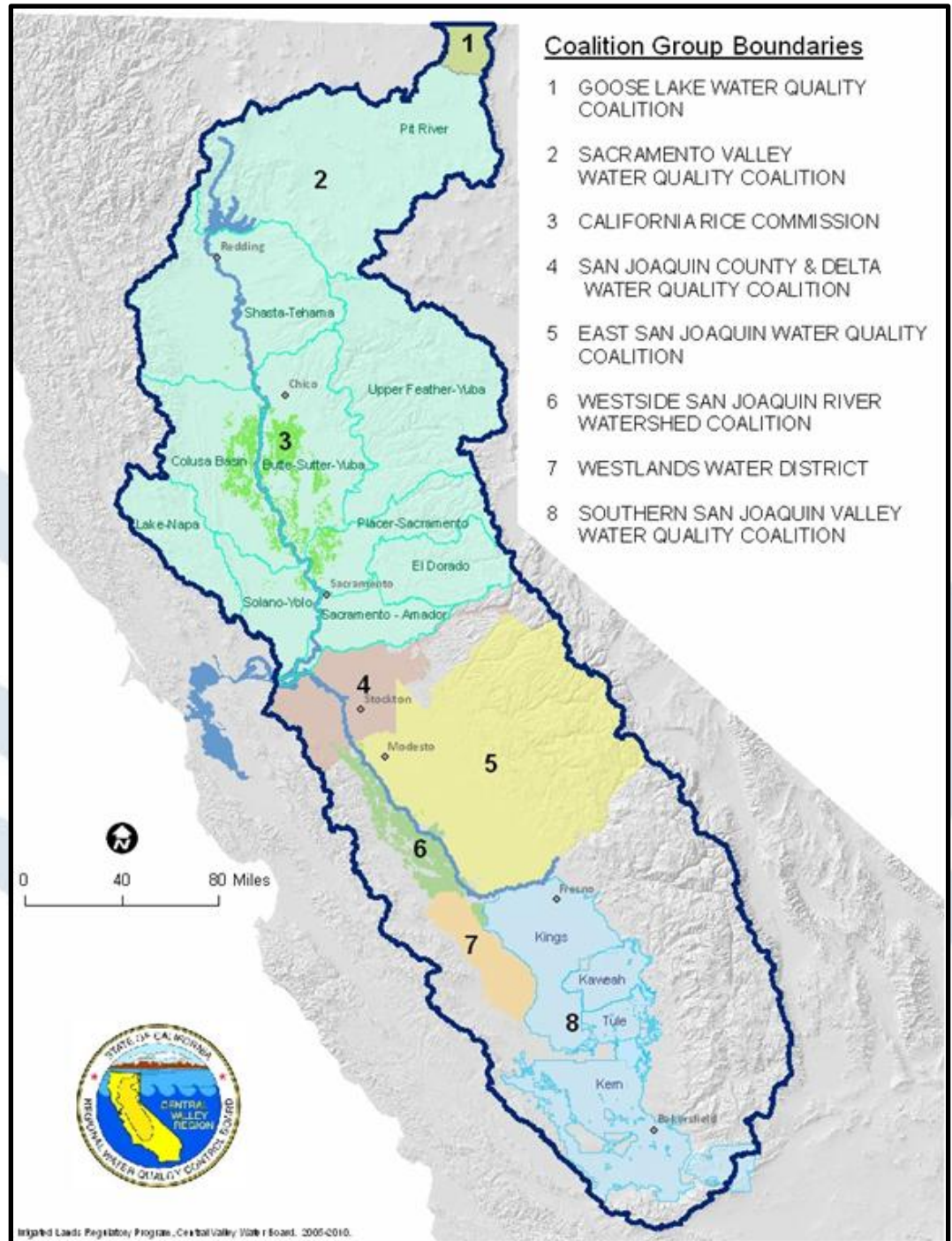
# LOS ANGELES-VENTURA AGRICULTURAL CONDITIONAL WAIVER

- No Tiers
- Monitoring is performed 4 times a year; twice during the wet season and twice during the dry season.
- Toxicity is monitored during one wet season event and one dry season event.
- Annual Monitoring Report required.

# CENTRAL VALLEY AGRICULTURAL CONDITIONAL WAIVER

- No education component.
  - Coalitions required to educate growers.
  - Annual grower meetings and communication.
- Does not explicitly allow tiering.
  - Adjusted monitoring and reporting requirements in specific areas.
- Coalition group to submit annual monitoring report and annual management plan progress report.
- Requires management plan developed based on monitoring results

# 8 Coalition Groups



# Reporting Requirements

- Quarterly Monitoring Data Report
- Exceedance Reporting
- Annual Monitoring Report
- Annual Management Plan Progress Report

# Data Management

- Excel spreadsheet template
  - Field and laboratory results
  - Quality control results
- Data management team processing
- Uploaded to CV RDC
- Transfer to CEDEN

# PROGRAM NEXT STEPS

- Address non-filers
- Prioritize water quality impaired areas
- Assist growers to develop and implement Management Plans to address priority impaired waters of the state
- Follow-up monitoring to assess performance

# ADDITIONAL INFORMATION

- **SWRCB Agricultural Web Page**

[http://www.waterboards.ca.gov/water\\_issues/programs/agriculture/](http://www.waterboards.ca.gov/water_issues/programs/agriculture/)

- ILRP Monthly Reports
- 303(d) list of impaired water bodies (Agriculture)
- Regional Board ILRP Monitoring Reports