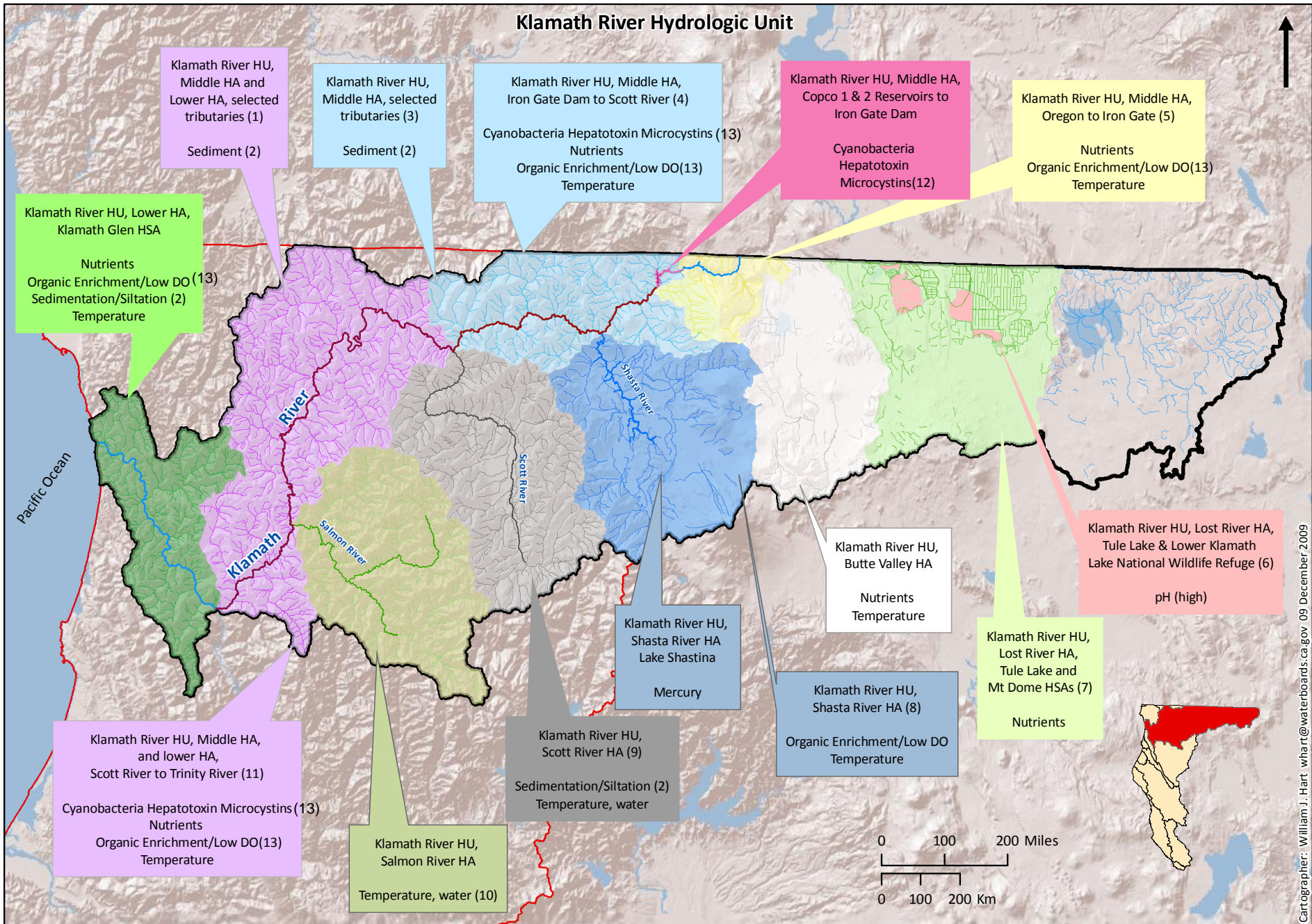




2010 CWA Section 303(d) List of Water Quality Limited Segments





Klamath River Hydrologic Unit: Footnotes to Map

- 1) Sediment Listing is specific to China Creek, Fort Goff Creek, Grider Creek, Portuguese Creek, Thompson Creek, and Walker Creek.
- 2) Sediment TMDL Implementation Policy completed on November 29, 2004.
- 3) Sediment Listing is specific to Beaver Creek, Cow Creek, Deer Creek, Hungry Creek, and West Fork Beaver Creek.
- 4) Includes HSAs: Beaver Creek HSA (105.35) and Hornbrook HSA (105.36).
- 5) Includes HSAs: Iron Gate HSA (115.37) and Copco HSA (105.38).
- 6) TMDL established by the USEPA on December 30, 2008. Includes Calwater Planning Watersheds: Lower Klamath Lake National Wildlife Refuge (105.91020) and Tule Lake (105.92020).
- 7) TMDL established by the USEPA on December 30, 2008. Includes Hydrologic Subareas (HSAs): Mt. Dome HSA (105.91) and Tule Lake HSA (105.92).
- 8) TMDL and Implementation Plan established on January 26, 2007.
- 9) TMDL and Implementation Plan established on September 8, 2006.
- 10) TMDL and Implementation Plan established on March 29, 2006.
- 11) Includes HSAs: Orleans HSA (105.12), Ukonom HSA (105.31), Happy Camp HSA (105.32), and Seiad Valley HSA (105.33).
- 12) Listing applies to Copco & Iron Gate Reservoirs, as wells at the mainstem Klamath River from Copco 1 to Iron Gate Dam.
- 13) Listing applies only to the mainstem Klamath River