

# Biological Objectives Assessment Framework and Implementation Issues

Wednesday, October 10, 2012

## Monitoring Requirements

- Require bioassessment in all Water Board programs.
- Leave to discretion of Regional Boards
- Require participation in regional monitoring

## Thresholds

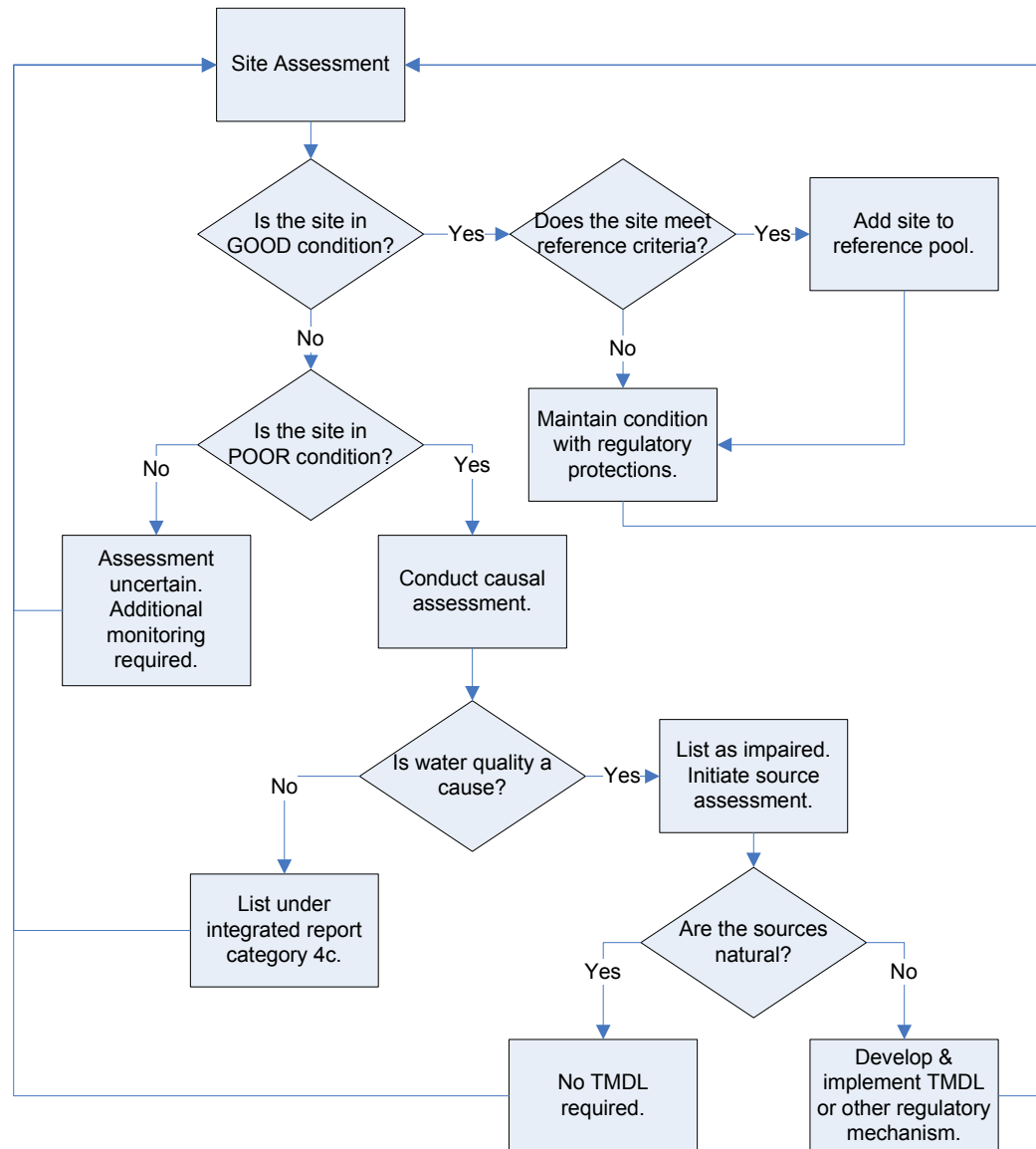
- Statistical benchmarks (Std Dev or %tiles)
- Select acceptable species loss (O/E)
- Combination of O/E & MMI metrics

## Habitat Restoration

- Will restoration be required?
- Will off-site compensatory mitigation be considered or required?
- How will responsibility for restoration be allocated among responsible parties?

## Flow

- Should biological assessments be used in developing flow criteria?
- Should biological objectives be used in making water rights decisions?



## Independent Applicability

- Should biology "trump" other assessments?
- Should GOOD biology be used to relax other requirements or de-list?
- Should biology be used as a screen that triggers other monitoring under a causal assessment?

## Exceptions for Modified Streams

- What are the exception classes?
- How are exception classes defined?
- When & how should exceptions be granted?
- What expectations should apply (e.g., no degradation, best attainable)?
- Should the policy even apply to modified streams?
- Who will decide whether an exception is granted (State Board or Regional Board)?

## Causal Assessments

- Who is responsible for conducting/paying for causal assessments?
- How would costs be shared?
- Would causal assessment be done as part of initial TMDL development?
- What happens if causal assessment is inconclusive?

## Impairment Listing

- How do sites get listed as impaired?
- Would a site be listed before or after causal assessment?
- At what scale would the listing apply (site, reach, area, watershed)?