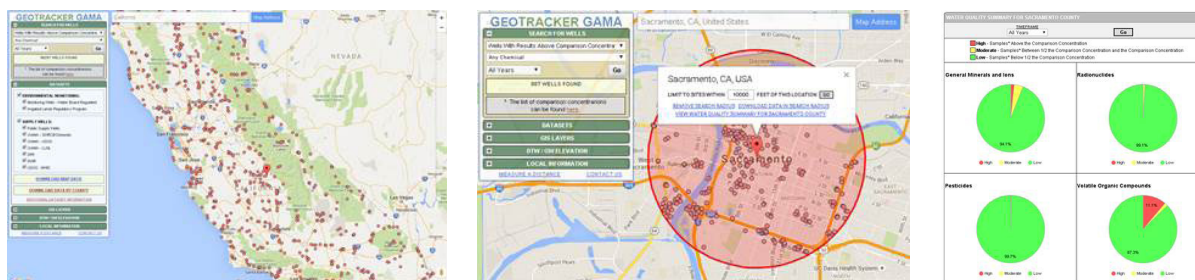


**GeoTracker GAMA** is the data management system created in response to the Groundwater Quality Monitoring Act of 2001 – AB 599 (Wat. Code, §§ 10780 – 10782.3). AB 599 identified the importance of maintaining and monitoring groundwater supply in the state and that a lack of groundwater information would impair regulator’s and the public’s ability to protect the state’s groundwater. AB 599 required the State Water Board to take advantage of and incorporate existing data from various monitoring programs throughout the state.



**GeoTracker GAMA** integrates and geographically displays groundwater information from multiple sources through a publicly accessible portal. GeoTracker GAMA offers analytical tools and reporting features to assess groundwater quality and water level information to identify potential groundwater issues in relationship to roads, satellite imagery, and terrain using Google-based maps. GeoTracker GAMA users can filter results by county, legislative district, groundwater basin, and other criteria. Custom data query options allow users to see concentration results above chemical contaminant thresholds. Additionally, data can be exported for use in other programs.

**GeoTracker GAMA** system consists of groundwater sampling data and water level information. Well construction details are also available for State and Regional Water Boards (collectively Water Boards) regulated sites. Dataset categories included in the system have been integrated from various state and federal agencies responsible for collecting groundwater information, and private groups who have requested to include their data in the system. Datasets are provided and displayed from the Department of Pesticide Regulation (DPR), Department of Water Resources (DWR), Lawrence Livermore National Laboratory (LLNL), Water Boards regulated sites, State Water Board domestic well data, and United States Geological Survey (USGS).

**GeoTracker GAMA** infrastructure is flexible to integrate and report on large, complex datasets from public agencies and smaller datasets from private parties. Groundwater information is constantly integrated into the system from various public and private sources using the State Water Board’s secure Electronic Submission of Information (ESI) module or by GAMA program staff.

### Currently, GeoTracker GAMA contains:

- Approximately 70.7 million standardized test results
- More than 3.6 million depth to water measurements from Water Boards cleanup sites and the Department of Water Resources water data library
- Over 270,000 individual well locations
- More than 118,000 environmental boring logs with well construction information
- 241 standardized chemicals