

**LATE ADDITION**  
**CALIFORNIA REGIONAL WATER QUALITY CONTROL BOARD**  
**LAHONTAN REGION**  
**MEETING OF SEPTEMBER 14-15, 2016**  
**APPLE VALLEY**

**ITEM 11**

**RESOLUTION AUTHORIZING A SUPPLEMENTAL ENVIRONMENTAL PROJECT  
PROGRAM MEMORANDUM OF UNDERSTANDING WITH THE TRANSITION  
HABITAT CONSERVANCY**

**LATE ADDITION**

Please insert into your agenda package Water Board staff's presentation (Enclosure No. 2, below) after bates page 11-50.

<b>ENCLOSURES</b>		<b>BATE NUMBER</b>
<b>2</b>	Water Board staff presentation	<b>11-50.5</b>

This page is intentionally left blank.



# RESOLUTION AUTHORIZING SEP PROGRAM MOU WITH THE TRANSITION HABITAT CONSERVANCY

Item 11  
September 15, 2016



# HISTORY

---

- SEP Program
- Pilot Program with TRWC
- Pilot Program Reviewed - July 2015
- Mojave IRWM MOU - February 2016



## SEP CATEGORIES

- Site Restoration;
- Stormwater/Flood Control;
- Water Supply/Wastewater Projects; and/or
- Technical Studies

Item No. 11



## SEP CONSIDERATIONS

- Public Health and Safety
- Environmental Health and Safety
- Multi-Regional or Statewide Benefit
- Fills Budgetary Gaps and/or Leverage
- EJ and DAC
- Improved Efficiencies
- Fulfills an Agency's Established Priority

Item No. 11

# TRANSITION HABITAT CONSERVANCY

---

- Compliant with SEP Program
- Operates in West Mojave Desert
- Implement Publically Vetted Community Plans
- Financially Solvent
- History of Successful Projects

Item No. 11

DRECP Independent Science Advisory Report

Figure 3. Subdivisions in the Mojave Desert delineated by Webb et al. (2009a).

DVNP-Death Valley National Park  
 MNP-Mojave National Preserve  
 JTNP-Joshua Tree National Park  
 LMNRA-Lake Mead Natl. Recreation Area  
 GCNP-Grand Canyon National Park  
 EAFB-Edwards Air Force Base  
 NAWSS-Naval Air Weapons Station North  
 NAWSS-Naval Air Weapons Station South  
 MCAGCC-Marine Corps Air Ground Combat Center  
 NTS-Nevada Test Site  
 NTR-Nevada Test and Training Range

Item No. 11

Proposed SEP Program MOU with THC

6

## TRANSITION HABITAT CONSERVANCY

---

- CDFW Authorized THC to Hold Mitigation Land
- Implementation Success History
  - Owns & Maintains 7,000 Acres
  - \$15M for Spring/Seep Studies & Endowments

Item No. 11

Proposed Program MCM with HC

7

## PROPOSED PROJECT STUDIES

---

- Abengoa Parcel Monitoring Well
- Sheep Creek Recharge Project
- McDonald Well Sourcing
- Cuddeback Lake Project
- West Mojave Abandoned Well Survey

Item No. 11

Proposed Program MCM with HC

8

# PROPOSED PROJECT ACQUISITIONS

---

- Cuddeback Lake Parcel
- Harper Lake/Black's Ranch Well (includes study element)
- Bird Spring Parcel

Item No. 11

Proposed Program MCM with HC

9

# STAFF RECOMMENDATION

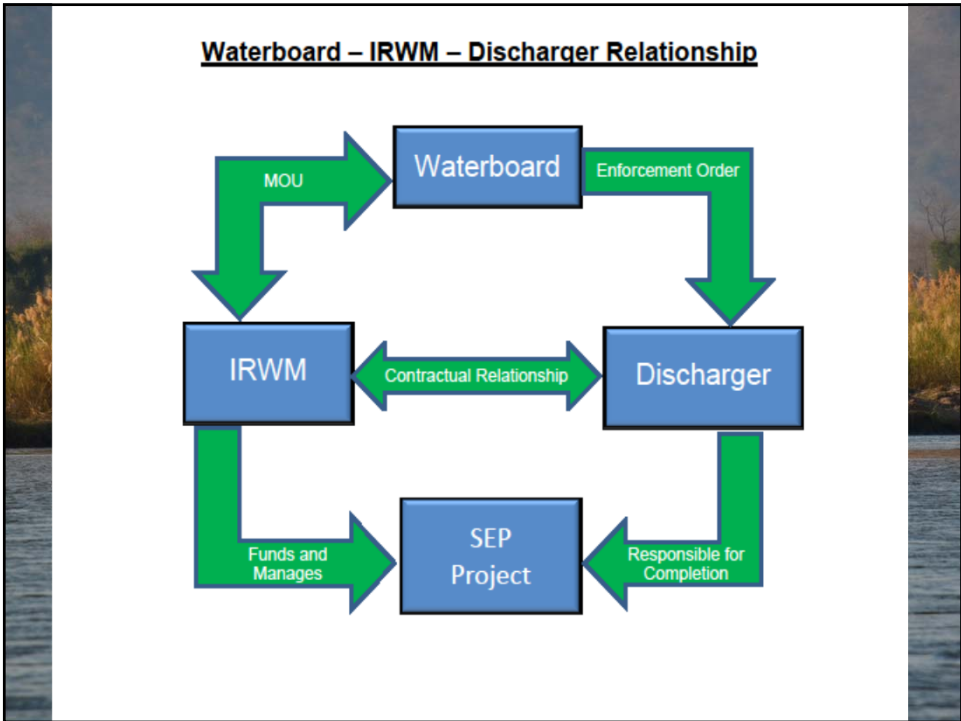
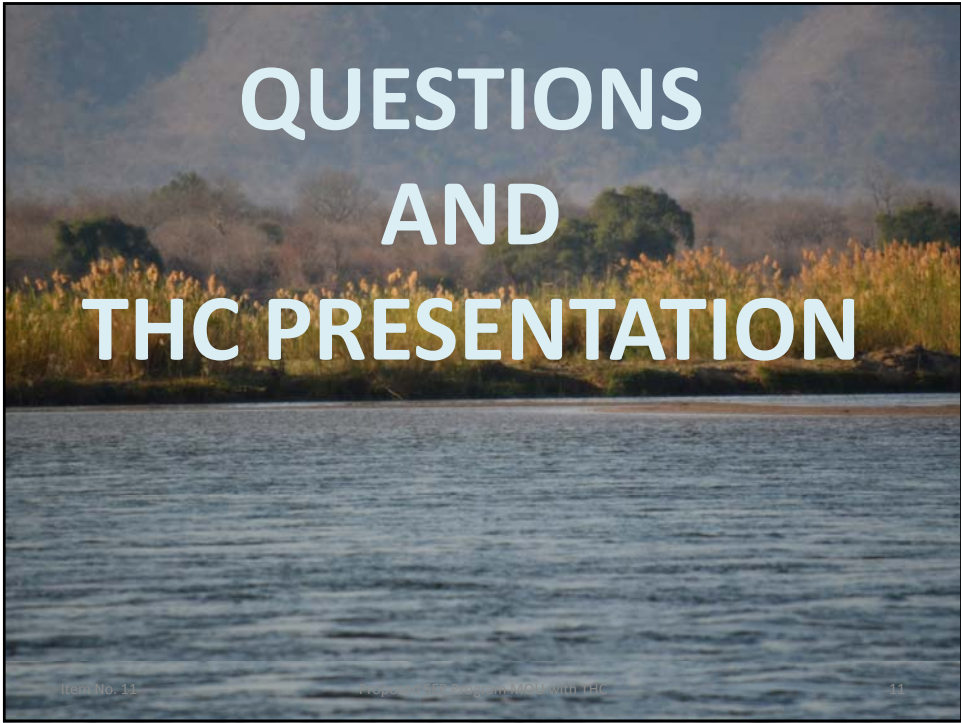
---

Adopt Proposed Resolution

Item No. 11

Proposed Program MCM with HC

10





**Legend**

- North/South Lahontan Funding Area
- Prop 84 Funding Area Regions
- Select Water Bodies
- County Boundaries
- (2) Antelope Valley
- (13) Inyo-Mono
- (15) Kern County
- (18) Mojave
- (34) Tahoe-Sierra
- (48) Fremont Basin
- (49) Lahontan Basins

DEPARTMENT OF WATER RESOURCES  
STATE OF CALIFORNIA

Item No. 11

## DIRECTION

- **THC Area Overlaps:**
  - Mojave IRWM (Member)
  - Antelope Valley IRWM
  - Fremont Basin IRWM
- **Resolution Encourages:**
  - IRWM Participation
  - List **Future** Projects with IRWMs
- **Moving Forward, Overlaps May Occur as MOUs Are Developed with Other Organizations**

## OPTIONS

1. Continue Developing MOUs with All Eligible Organizations.
2. Require Eligible Organizations to Become Members with IRWMs that Already Have SEP Program MOUs, and Develop MOUs with Those IRWMs.

Item No. 11

# RECOMMENDATION

- Continue Developing SEP Program MOUs with All Eligible Organizations
- Encourage All Organizations to Participate in IRWMs, but This Will Not be a Prerequisite

Item No. 11

Proposed SEP Program MOU with HC

15

# QUESTIONS ???

Item No. 11

Proposed SEP Program MOU with HC

16