

**Leviathan Mine
January 2015 TAC Meeting
Lahontan Water Board**



04/08/2014 13:57



Tasks in 2014:

- Summer Pond Water Treatment
- Flow and Stage Monitoring
- Routine Maintenance
- Revegetation Study

CL-2

FF-2

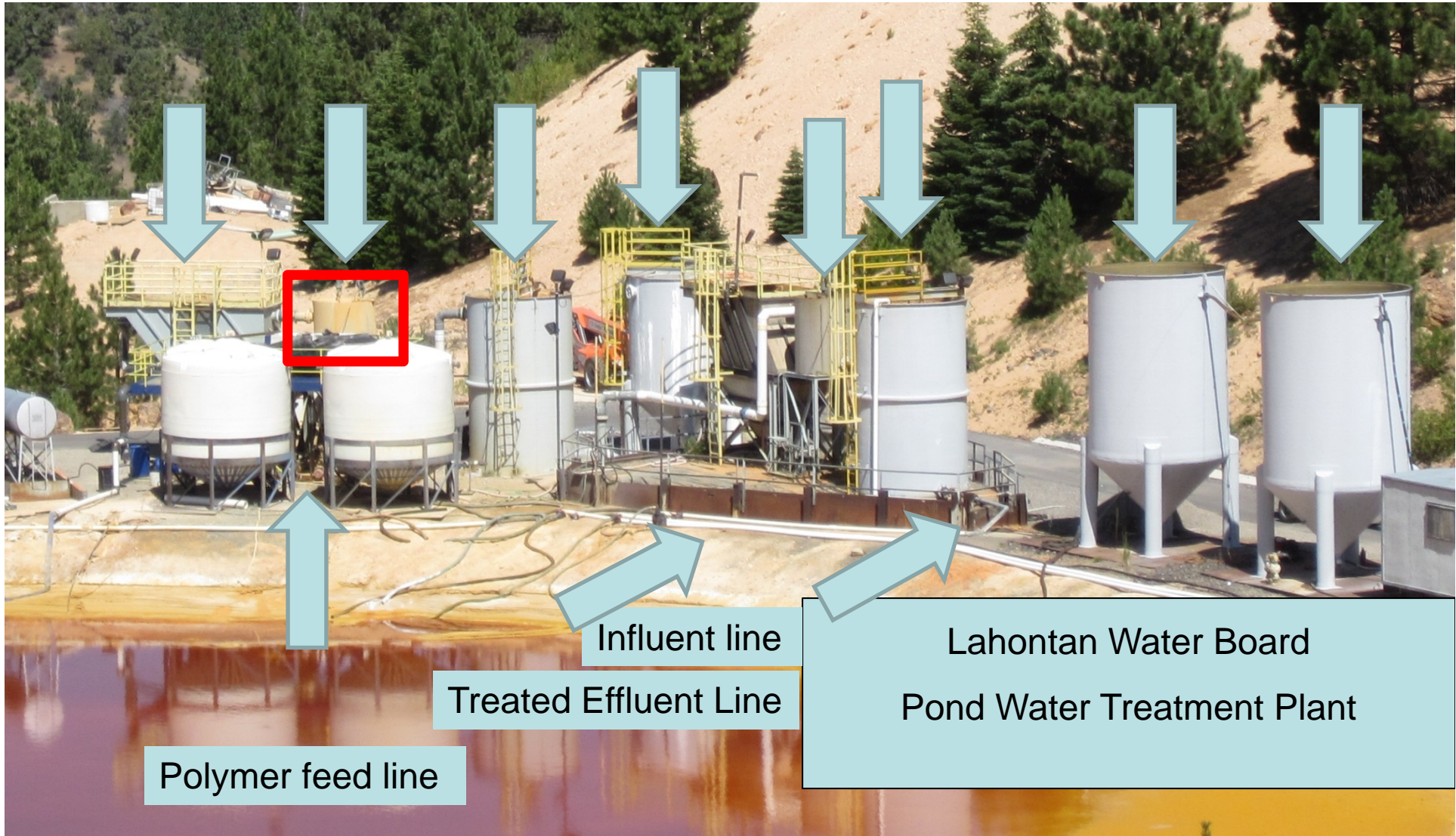
R-2

Lime Tank

FF-1

R-1

Utility Water Tanks

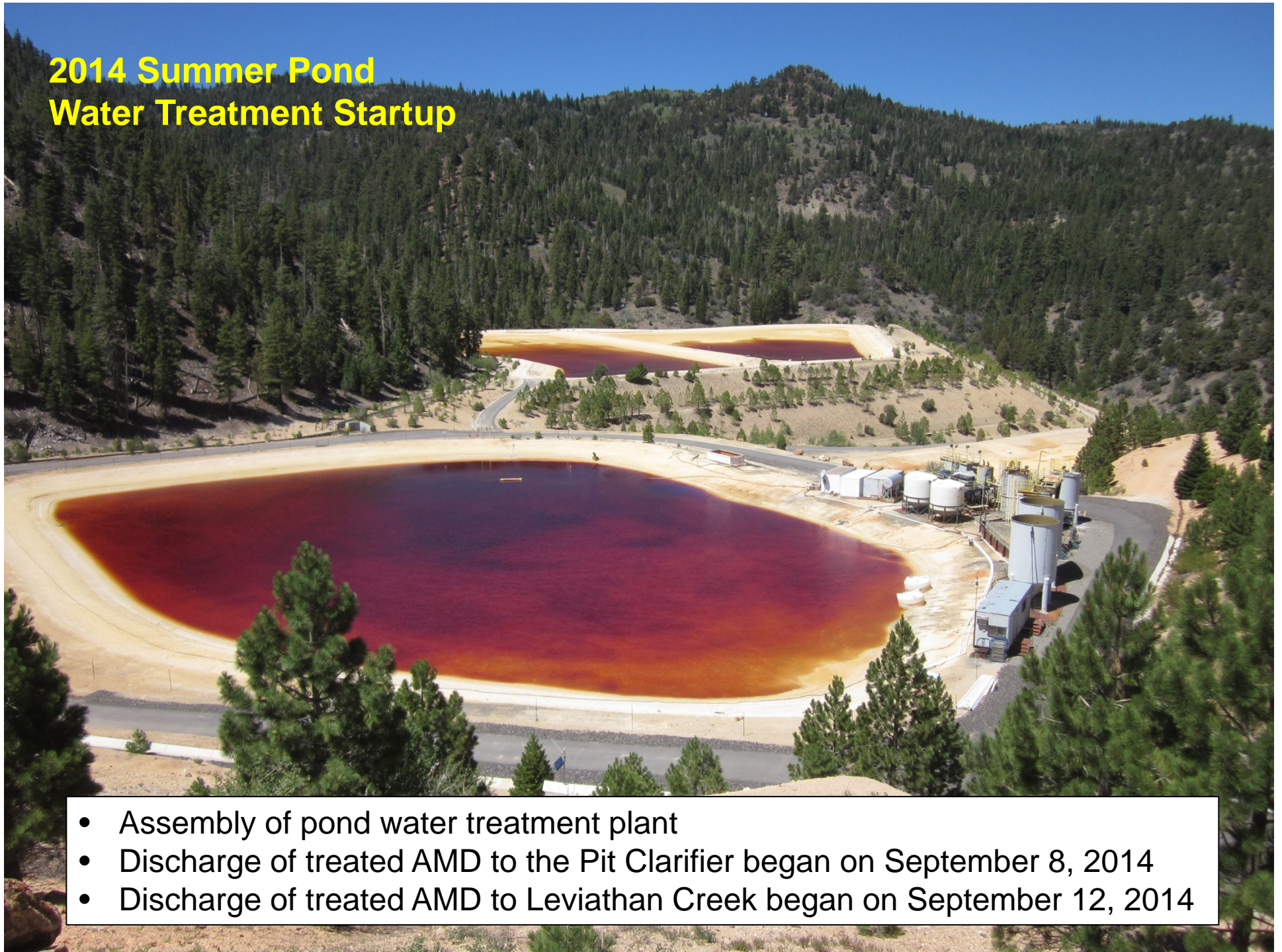


2014 Pit Clarifier Sludge Removal and Disposal



- Approximately 178 tons of sludge were hauled off site for disposal in July 2014.
- Sludge generated during the treatment of 2.7 million gallons of AMD in 2013.

2014 Summer Pond Water Treatment Startup



- Assembly of pond water treatment plant
- Discharge of treated AMD to the Pit Clarifier began on September 8, 2014
- Discharge of treated AMD to Leviathan Creek began on September 12, 2014

2014 Summer Pond Water Treatment

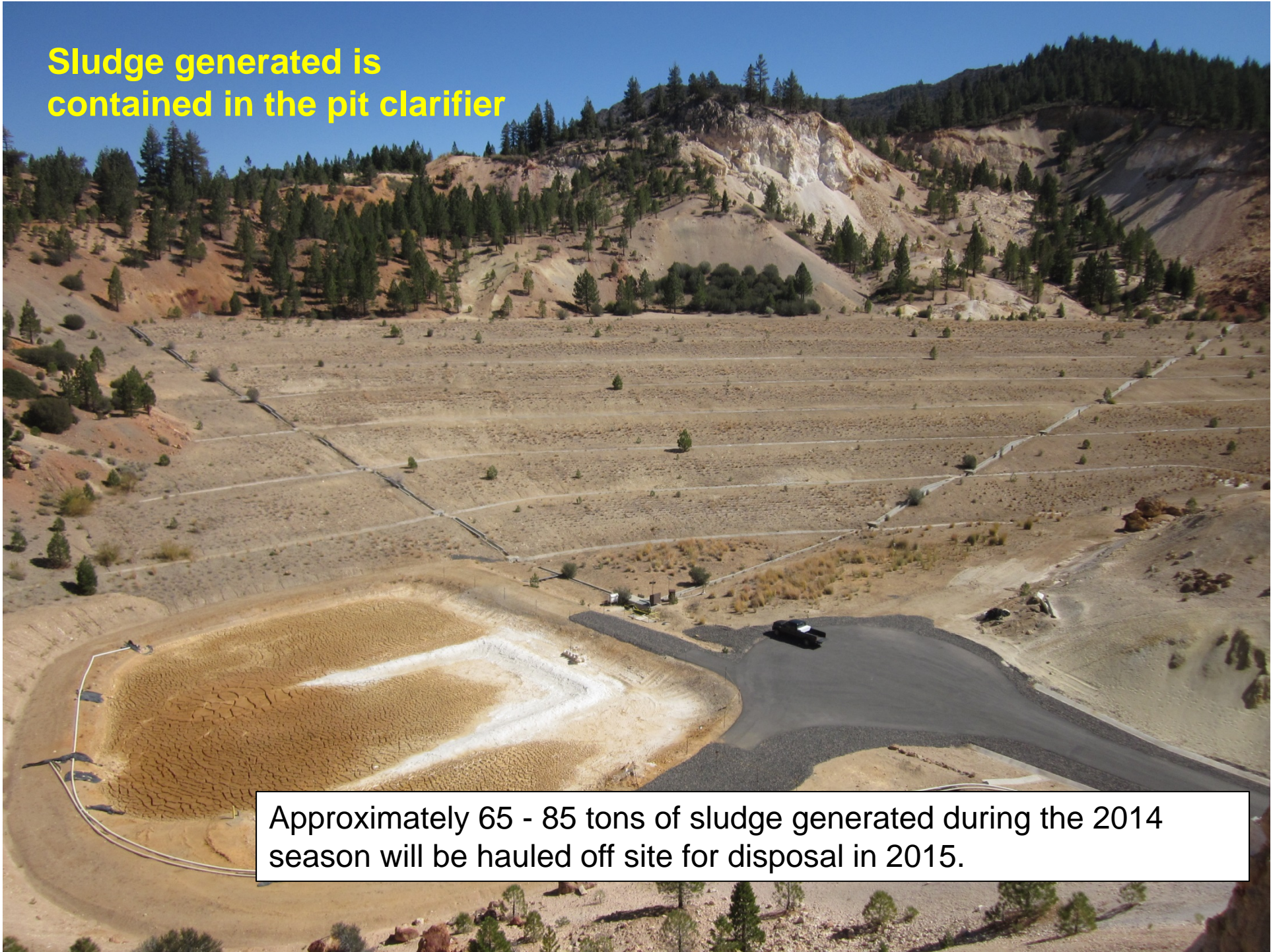
- 815,000 gallons of AMD treated and discharged
- Influent pH range 1.6 to 3.0 SU
- Influent average TDS 13,550 mg/L
- Field and lab data show USEPA discharge criteria met except total recoverable selenium

- 40.5 tons lime (dry weight)
- 595 gallons diesel
- 50 gallons gasoline
- 90 pounds of flocculent
- 11,900 mg lime / liter AMD

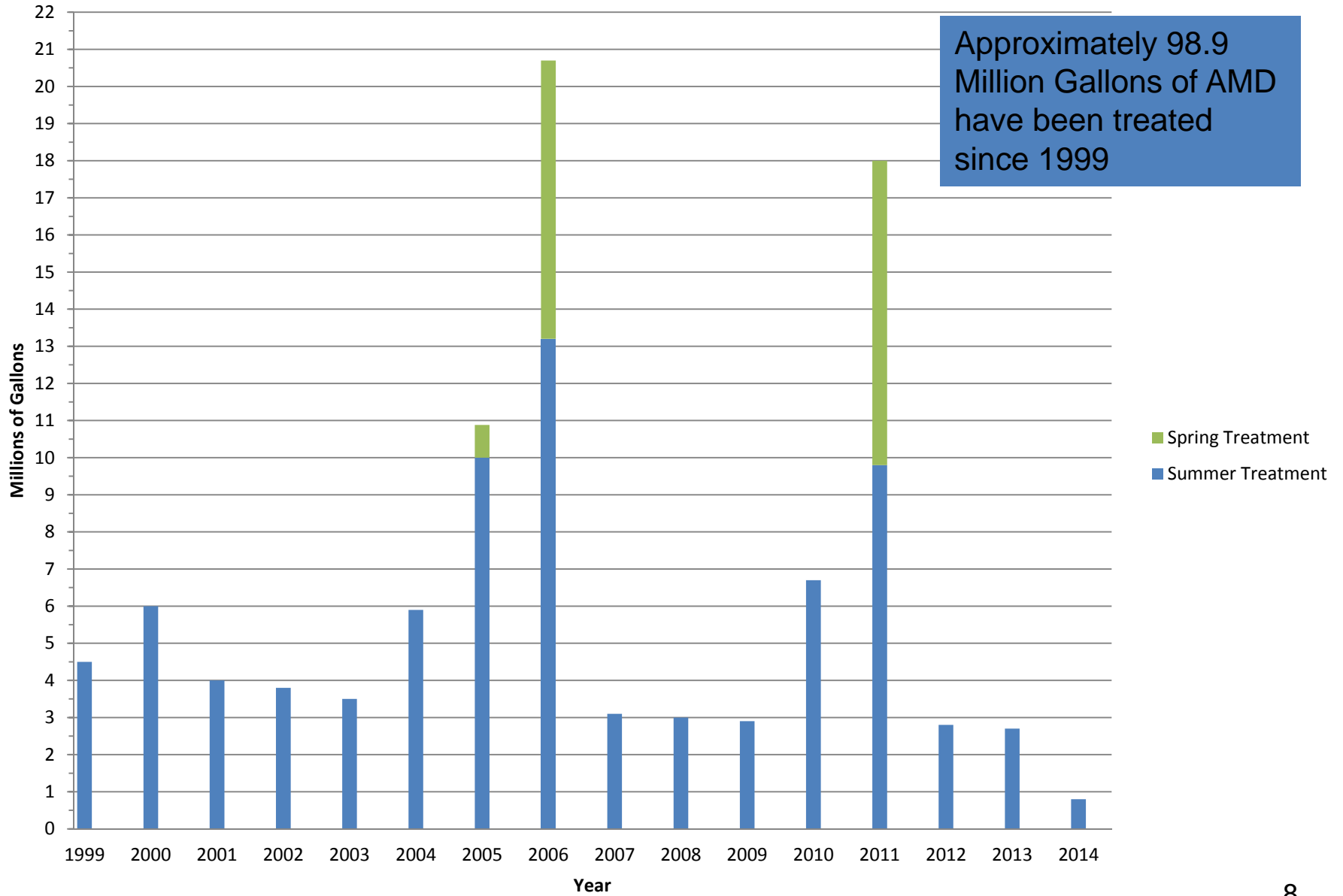
09/11/2014 10:59

Sludge generated is contained in the pit clarifier

Approximately 65 - 85 tons of sludge generated during the 2014 season will be hauled off site for disposal in 2015.



AMD Neutralized by Treatment Year



**Maximum capacity is available
for AMD storage entering
the 2014/15 winter**



09/11/2014 14:15

Ponds 2 North and 2 South nearly dry due to pond water treatment

Flow and stage monitoring



12/04/2013 13:32

- 15 locations during the 2014 water year

2014 Routine Maintenance



Routine Maintenance

- Removed accumulated sediment from storm water conveyance ditches
- Repaired perimeter fence
- Performed minor drainage work above flow control structure
- Coordinated with El Dorado County Department of Agriculture to spray invasive Tall Whitetop and Dyer's Woad

A close-up photograph of parched, cracked earth in shades of brown and tan. The cracks are deep and irregular, forming a network of polygonal shapes. The word "Questions?" is written in a bold, blue, sans-serif font in the center of the image.

Questions?