

CALIFORNIA REGIONAL WATER QUALITY CONTROL BOARD
COLORADO RIVER BASIN REGION

ORDER NO. 92-027

WASTE DISCHARGE REQUIREMENTS
FOR
JULIAN UNION HIGH SCHOOL DISTRICT
JULIAN UNION HIGH SCHOOL
Julian - San Diego County

The California Regional Water Quality Control Board, Colorado River Basin Region, finds that:

1. Julian Union High School District (hereinafter referred to as the discharger), P.O. Box 417, Julian, CA 92036, submitted a report containing updated information on the discharge of waste on January 14, 1992.
2. The discharger is discharging a maximum of 3,700 gallons-per-day of domestic sewage into a septic tank/leach line system that infiltrates through drain tile into an earthen oxidation basin. During dry periods, the wastewater is discharged via sprinklers on an adjacent field where a berm is constructed to prevent runoff. The treatment and disposal facilities are located in the NE $\frac{1}{4}$ of the NW $\frac{1}{4}$ of Section 5, T13S, R4E, SBB&M, which is at 1656 Hwy. 78, Julian.
3. This discharge has been subject to waste discharge requirements adopted in Board Order No. 88-127.
4. The discharger reports that there are two wells on the site, one approximately 110 feet east of the basin, which has been abandoned, and one about 500 feet northwest of the basin. Depth to ground water is reported to be about 275 feet. The basin is located on an alluvial fan in the upper portion of the Banner Creek Watershed.
5. The Water Quality Control Plan for the Colorado River Basin Region of California was adopted May 15, 1991 and designates the beneficial uses of ground and surface waters in this Region.
6. The beneficial uses of ground waters in the Anza-Borrego Hydrologic Unit are:
 - a. Municipal supply (MUN)
 - b. Industrial supply (IND)
 - c. Agricultural supply (AGR)
7. The Board has notified the discharger and all known interested agencies and persons of its intent to update waste discharge requirements for this discharge.
8. The Board in a public meeting heard and considered all comments pertaining to this discharge.

9. In accordance with Section 15301, Chapter 3, Title 14 of the California Code of Regulations, the issuance of these waste discharge requirements, which govern the operation of an existing facility involving negligible or no expansion of use beyond that previously existing, is exempt from the provisions of the California Environmental Quality Act (Public Resources Code, Section 21000 et seq.).

IT IS HEREBY ORDERED, that the discharger shall comply with the following:

A. Discharge Specifications

1. The treatment or disposal of wastes at this facility shall not cause pollution or nuisance as defined in Sections 13050(1) and 13050(m) of Division 7 of the California Water Code.
2. No wastewater other than domestic wastewater shall be discharged into the sewage disposal system described in Finding No. 2, above.
3. A minimum depth of freeboard of two (2) feet shall be maintained at all times in the oxidation basin(s).
4. Adequate measures shall be taken to assure that unauthorized persons are effectively excluded from contact with the wastewater.
5. Adequate measures shall be taken to assure that flood or surface drainage waters do not erode or otherwise render portions of the discharge facilities inoperable.
6. The discharger shall obtain prior written approval from the Regional Board's Executive Officer specifying location and method of disposal, before disposing of treated or untreated sludge, or similar solid waste materials. In addition, the discharger shall provide the results of any sludge analyses as specified by the Executive Officer.
7. There shall be no surface flow of wastewater away from the discharge facilities, and there shall be no surfacing downstream.
8. Disposal by ponding shall be conducted in such a manner that there shall be no stranded or exposed sewage solids.
9. Treatment and discharge of wastewater shall be conducted by technical procedures which will maintain an aerobic environment.
10. Spray discharge of effluent shall not be conducted during periods of adverse climatic conditions (such as strong winds, rain, or when the ground is frozen or saturated), and adequate effluent storage facilities shall be provided to achieve compliance with this requirement.
11. Sewage effluent discharged by spray irrigation shall contain at least 2 mg/L of dissolved oxygen.
12. Sludge from septic tanks shall be discharged only by a duly authorized service.

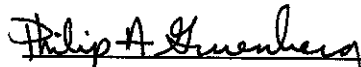
13. The discharge into the oxidation basin shall not exceed 3,700 gallons-per-day.

B. Provisions

1. Prior to any modifications in this facility which would result in material change in the quality or quantity of wastewater treated or discharged, or any material change in the location of discharge, the discharger shall report all pertinent information in writing to the Regional Board; and obtain revised requirements before any modifications are implemented.
2. The discharger shall comply with "Monitoring and Reporting Program No. 92-027", and future revisions thereto, as specified by the Regional Board's Executive Officer.
3. Prior to any change in ownership or management of this operation, the discharger shall transmit a copy of this Board Order to the succeeding owner/operator, and forward a copy of the transmittal letter to the Regional Board.

IT IS FURTHER ORDERED that Board Order No. 88-127 be superseded by this Board Order.

I, Philip A. Gruenberg, Executive Officer, do hereby certify the foregoing is a full, true and correct copy of an Order adopted by the California Regional Water Quality Control Board, Colorado River Basin Region, on May 13, 1992.



Executive Officer

CALIFORNIA REGIONAL WATER QUALITY CONTROL BOARD
COLORADO RIVER BASIN REGION

MONITORING AND REPORTING PROGRAM NO. 92-027
FOR
JULIAN UNION HIGH SCHOOL DISTRICT
JULIAN UNION HIGH SCHOOL
Julian - San Diego County

Location of Discharge: Portion of NE $\frac{1}{4}$, NW $\frac{1}{4}$ of Section 5, T13S, R4E, SBB&M

MONITORING

The discharger shall submit the following information in an annual status report:

1. Estimate of average daily flow (gpd) of sewage discharged to basin(s).
2. Estimate of maximum number of persons presently discharging to the sewerage system.
3. List of any proposed changes during the coming year.
4. Explain any problems in the sewerage system during the preceding year.
5. The sewage effluent shall be sampled quarterly during March, June, September and December. The samples shall be analyzed for the following:

<u>Parameters and Constituent</u>	<u>Unit</u>	<u>Types of Sample</u>	<u>Reporting Frequency</u>
a. pH	---	Grab	Quarterly
b. Total dissolved Solids	mg/L ¹	Grab	Quarterly
c. Dissolved Oxygen	mg/L	Grab	Quarterly
d. Nitrate	mg/L	Grab	Quarterly

The collection, preservation and holding times of all samples shall be in accordance with EPA approval procedures.

REPORTING

1. Report any failures of the system by telephone and follow-up by letter.
2. Report immediately by telephone prior to discharging by spray irrigation to determine if the dissolved oxygen level is less than 2 mg/L.

¹ mg/L : Milligram per Liter

3. Quarterly monitoring reports shall be submitted to the Regional Board by January 15, April 15, July 15, and October 15 of each year.
4. Annual reports shall be submitted to the Regional Board by January 15th of each year to:
5. Submit monitoring reports to:

Regional Water Quality Control Board
Colorado River Basin Region
73-271 Highway 111, Suite 21
Palm Desert, CA 92260

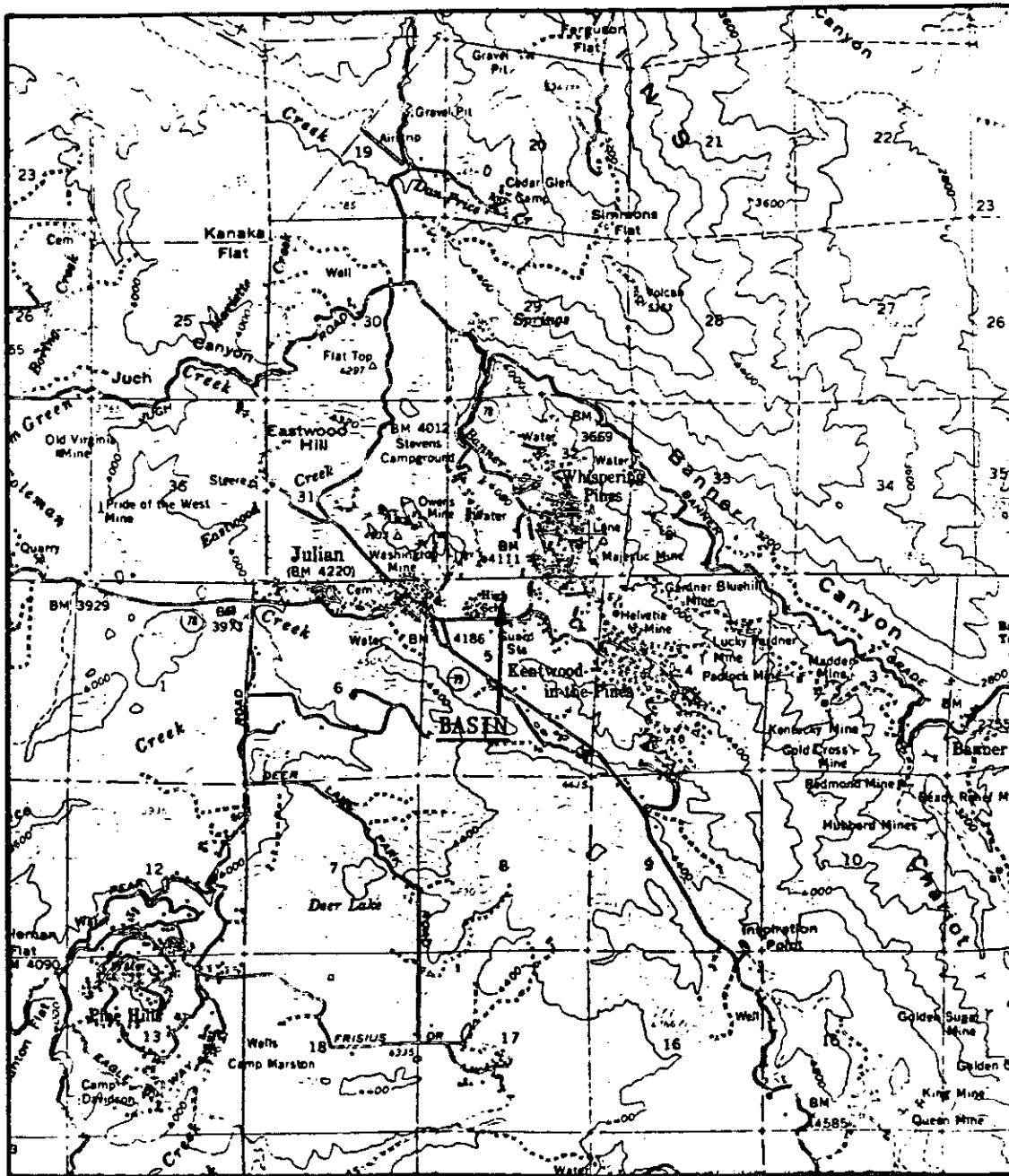
ORDERED BY:

Philip A. Quenberq
Executive Officer

May 13, 1992

Date

CALIFORNIA REGIONAL WATER QUALITY CONTROL BOARD - 7



SITE MAP

JULIAN UNION HIGH SCHOOL DISTRICT
Julian - San Diego
Portion of NE $\frac{1}{4}$, NW $\frac{1}{4}$ of Section 5, T13S, R4E, SBB&M
USGS Santa Ysabel 15 min. Topographic Map