



California Regional Water Quality Control Board San Diego Region



Matthew Rodriguez
Secretary for
Environmental Protection

Over 50 Years Serving San Diego, Orange, and Riverside Counties
Recipient of the 2004 Environmental Award for Outstanding Achievement from U.S. EPA

Edmund G. Brown Jr.
Governor

9174 Sky Park Court, Suite 100, San Diego, California 92123-4353
(858) 467-2952 • Fax (858) 571-6972
<http://www.waterboards.ca.gov/sandiego>

September 26, 2011

In reply refer to:
765725: cloflen

Tara Laski
Universal Health Services Inc.
816 South Belle Street
Corona, CA 92882

Dear Tara Laski:

**SUBJECT: ACTION ON REQUEST FOR CLEAN WATER ACT SECTION 401
WATER QUALITY CERTIFICATION APPLICATION NO. 11C-031.**

Enclosed find Clean Water Act Section 401 Water Quality Certification for discharges to Waters of the U.S. and acknowledgment of enrollment under State Water Resources Control Board Order No. 2003-017-DWQ for the **Temecula Regional Medical Center Project** (Project). A description of the project and project location can be found in the project information sheet, location map, and site maps which are included as Attachments 1 through 4.

Any petition for reconsideration of this Certification must be filed with the State Water Resources Control Board within 30 days of certification action (23 CCR § 3867). If no petition is received, it will be assumed that you have accepted and will comply with all the conditions of this Certification.

Failure to comply with all conditions of this Certification may subject you to enforcement actions by the California Regional Water Quality Control Board, San Diego Region (San Diego Water Board), including administrative enforcement orders requiring you to cease and desist from violations, or to clean up waste and abate existing or threatened conditions of pollution or nuisance; administrative civil liability in amounts of up to \$10,000 per day per violation; referral to the State Attorney General for injunctive relief; and, referral to the District Attorney for criminal prosecution.

California Environmental Protection Agency

Tara Laski
Temecula Hospital, 11C-031

- 2 -

September 26, 2011

In the subject line of any response, please include the requested "In reply refer to:" information located in the heading of this letter. For questions pertaining to the subject matter, please contact Chad Loflen at (858) 467-2727 or cloflen@waterboards.ca.gov.

Respectfully,



for James G. Smith, AEO
DAVID W. GIBSON
Executive Officer

Enclosures:

Clean Water Act Section 401 Water Quality Certification No. 11C-031 for **Temecula Regional Medical Center Project**, with 4 attachments

cc: Refer to Attachment 2 of Certification 11C-031 for Distribution List.

Tech Staff Info & Use	
File No.	11C-031
WDID	9000002251
Reg. Measure ID	378781
Place ID	765725
Party ID	526659
Person ID	526660



California Regional Water Quality Control Board

San Diego Region



Matthew Rodriguez
Secretary for
Environmental Protection

Over 50 Years Serving San Diego, Orange, and Riverside Counties
Recipient of the 2004 Environmental Award for Outstanding Achievement from USEPA

Edmund G. Brown Jr.
Governor

9174 Sky Park Court, Suite 100, San Diego, California 92123-4340
(858) 467-2952 • Fax (858) 571-6972
[http:// www.waterboards.ca.gov/sandiego](http://www.waterboards.ca.gov/sandiego)

Action on Request for
Clean Water Act Section 401 Water Quality Certification
and Waste Discharge Requirements
for Discharge of Dredged and/or Fill Materials

PROJECT: Temecula Regional Medical Center,
Certification Number (11C-031),
WDID: 9 00002251

APPLICANT: Tara Laski
Universal Health Services, Inc.
816 South Belle Street
Corona, CA 9882

CIWQS Reg. Meas. ID: 378781 Place ID: 765725 Party ID: 526659
--

ACTION:

<input type="checkbox"/> Order for Low Impact Certification	<input type="checkbox"/> Order for Denial of Certification
<input checked="" type="checkbox"/> Order for Technically-conditioned Certification	<input type="checkbox"/> Waiver of Waste Discharge Requirements
<input checked="" type="checkbox"/> Enrollment in SWRCB GWDR Order No. 2003-017 DWQ	<input type="checkbox"/> Enrollment in Isolated Waters Order No. 2004-004 DWQ

PROJECT DESCRIPTION:

The proposed project is located in the City of Temecula and consists of the construction of a regional hospital and associated medical buildings. The project will occur in two phases, with phase I to be completed by June 2013 and ultimate build-out by 2025. The project site includes 4 unnamed drainages, tributary to Temecula Creek. The project will avoid the largest tributary, located on the eastern portion of the property. The project will fill the other 3 unnamed tributaries, resulting in permanent impacts to 0.19 acres (1,243 linear feet) of unvegetated streambed. The 3 unnamed tributaries to be impacted are anthropogenically created waters that drain the project site and convey storm flows from adjacent developments. Mitigation for impacts to waters of the U.S. will occur within the watershed, and will be either restoration or establishment at a 10:1 or 1:1 ratio, respectively. The procurement of mitigation must occur within 9 months of the discharge of dredge or fill material to waters of the U.S. The project will treat 100% of new on-site impervious surfaces associated with project construction (utilizing a combination of low impact development approaches). A portion of the site will utilize subsurface infiltration to retain flows on-site, while

California Environmental Protection Agency

Recycled Paper



other portions of the site will utilize a LID treatment train consisting of rain gardens, modular wetland units, bioswales, and/or sand filters, which will treat flows prior to entry into vegetated detention basins. A small portion of curb and gutter which cannot be treated will be built off-site (0.04 acres), and a portion of off-site existing impervious surfaces (0.12 acres) will be removed through the construction of drought-tolerant vegetated median.

TABLE OF CONTENTS

I. STANDARD CONDITIONS:..... 3

II. ADDITIONAL CONDITIONS: GENERAL 3

III. ADDITIONAL CONDITIONS: CONSTRUCTION BMPs 5

IV. ADDITIONAL CONDITIONS: POST-CONSTRUCTION BMPs..... 6

V. ADDITIONAL CONDITIONS: COMPENSATORY MITIGATION..... 8

VI. MONITORING REQUIREMENTS:..... 10

VII. NOTIFICATION REQUIREMENTS:..... 10

VIII. REPORTING REQUIREMENTS:..... 12

VIII. CEQA FINDINGS: 15

IX. PUBLIC NOTIFICATION OF PROJECT APPLICATION: 15

X. SAN DIEGO WATER BOARD CONTACT PERSON: 15

XI. WATER QUALITY CERTIFICATION: 16

I. STANDARD CONDITIONS:

The following three standard conditions apply to all Certification actions, except as noted under Condition 3 for denials.

- A. This Certification action is subject to modification or revocation upon administrative or judicial review, including review and amendment pursuant to section 13330 of the California Water Code and section 3867 of Title 23 of the California Code of Regulations (23 CCR).
- B. This Certification action is not intended and must not be construed to apply to any discharge from any activity involving a hydroelectric facility requiring a Federal Energy Regulatory Commission (FERC) license or an amendment to a FERC license unless the pertinent Certification application was filed pursuant to 23 CCR subsection 3855(b) and the application specifically identified that a FERC license or amendment to a FERC license for a hydroelectric facility was being sought.
- C. The validity of any non-denial Certification action (Actions 1 and 2) must be conditioned upon total payment of the full fee required under 23 CCR section 3833, unless otherwise stated in writing by the certifying agency.

II. ADDITIONAL CONDITIONS: GENERAL

- A. Water Quality Certification No. 11C-031 (Certification) is only valid if the project begins no later than 5 (five) years from the date of issuance. If the project has not begun within 5 years from the date of issuance, this Certification expires.
- B. Universal Health Services, Inc. must comply with the requirements of State Water Resources Control Board Water Quality Order No. 2003-0017-DWQ, *Statewide General Waste Discharge Requirements for Discharges of Dredged or Fill Material That Have Received State Water Quality Certification*. These General Waste Discharge Requirements are accessible at:
http://www.waterboards.ca.gov/water_issues/programs/cwa401/docs/generalorders/go_wdr401regulated_projects.pdf.
- C. Universal Health Services, Inc. must, at all times, fully comply with the engineering plans, specifications and technical reports submitted to the California Regional Water Quality Control Board, San Diego Region (San Diego Water Board), to support this Certification and all subsequent submittals required as part of this Certification and as described in Attachment 1. The conditions within this Certification must supersede

conflicting provisions within such plans submitted prior to the Certification action. Any modifications thereto, would require notification to the San Diego Water Board and reevaluation for individual Waste Discharge Requirements and/or Certification amendment.

- D. During construction, Universal Health Services, Inc. must maintain a copy of this Certification at the Project site so as to be available at all times to site personnel and agencies.
- E. Universal Health Services, Inc. must permit the San Diego Water Board or its authorized representative at all times, upon presentation of credentials:
 - 1. Entry onto Project premises, including all areas on which wetland fill or wetland mitigation is located or in which records are kept.
 - 2. Access to copy any records required to be kept under the terms and conditions of this Certification.
 - 3. Inspection of any treatment equipment, monitoring equipment, or monitoring method required by this Certification.
 - 4. Sampling of any discharge or surface water covered by this Order.
- F. In the event of any violation or threatened violation of the conditions of this Certification, the violation or threatened violation must be subject to any remedies, penalties, process or sanctions as provided for under State law. For purposes of section 401(d) of the Clean Water Act, the applicability of any State law authorizing remedies, penalties, process or sanctions for the violation or threatened violation constitutes a limitation necessary to assure compliance with the water quality standards and other pertinent requirements incorporated into this Certification.
- G. In response to a suspected violation of any condition of this Certification, the San Diego Water Board may pursuant to Water Code sections 13267 and 13383, require the holder of any permit or license subject to this Certification to investigate, monitor and report information on the violation. The only restriction is that the burden, including costs, of preparing the reports must bear a reasonable relationship to the need for and the benefits to be obtained from the reports.
- H. In response to any violation of the conditions of this Certification, the San Diego Water Board may modify the conditions of this Certification as appropriate to ensure compliance.

III. ADDITIONAL CONDITIONS: CONSTRUCTION BEST MANAGEMENT PRACTICES

- A. Prior to the start of the project, and annually thereafter, Universal Health Services, Inc. must educate all personnel on the requirements in this Certification, pollution prevention measures, spill response, and Best Management Practice (BMP) implementation and maintenance.
- B. Universal Health Services, Inc. must, at all times, maintain appropriate types and sufficient quantities of materials on-site to contain any spill or inadvertent release of materials that may cause a condition of pollution or nuisance if the materials reach waters of the United States and/or State.
- C. Universal Health Services, Inc. must enroll in and comply with the requirements of State Water Resources Control Board Water Quality Order No. 2009-0009-DWQ, NPDES No. CAS000002, *General Permit for Storm Water Discharges Associated with Construction and Land Disturbance Activities*.
- D. The treatment, storage, and disposal of wastewater during the life of the project must be done in accordance with waste discharge requirements established by the San Diego Water Board pursuant to CWC § 13260.
- E. Discharges of concentrated flow during construction or after completion must not cause downstream erosion or damage to properties or stream habitat.
- F. Water containing mud, silt, or other pollutants from equipment washing or other activities, must not be discharged to waters of the United States and/or the State or placed in locations that may be subjected to storm flows. Pollutants discharged to areas within a stream diversion area must be removed at the end of each work day or sooner if rain is predicted.
- G. All surface waters, including ponded waters, must be diverted away from areas undergoing grading, construction, excavation, vegetation removal, and/or any other activity which may result in a discharge to the receiving water. Diversion activities must not result in the degradation of beneficial uses or exceedance of water quality objectives of the receiving waters. Any temporary dam or other artificial obstruction constructed must only be built from materials such as clean gravel which will cause little or no siltation. Normal flows must be restored to the affected stream immediately upon completion of work at that location.
- H. All areas that will be left in a rough graded state must be stabilized no later than one week after completion of grading. Universal Health Services, Inc. and subsequent owners, are responsible for implementing and

maintaining BMPs to prevent erosion of the rough graded areas to prevent flow from this area from causing adverse effects to beneficial uses. After completion of grading, all areas must be revegetated with native species appropriate for the area. The revegetation palette must not contain any plants listed on the California Invasive Plant Council Invasive Plant Inventory, which can be found online at: <http://www.cal-ipc.org/ip/inventory/weedlist.php>.

- I. Substances hazardous to aquatic life including, but not limited to, petroleum products, raw cement/concrete, asphalt, and coating materials, must be prevented from contaminating the soil and/or entering waters of the United States and/or State. BMPs must be implemented to prevent such discharges during each project activity involving hazardous materials.
- J. Removal of vegetation must occur by hand, mechanically, or using EPA approved herbicides deployed using applicable BMPs to prevent impacts to beneficial uses of waters of the State. Use of aquatic pesticides must be done in accordance with State Water Resources Control Board Water Quality Order No. 2004-0009-DWQ, and any subsequent reissuance as applicable. Removal of vegetation must occur outside of the avian nesting season (March 15- August 31) unless supervised by a biologist following proper notification, with San Diego Water Board concurrence, to the California Department of Fish and Game.

IV. ADDITIONAL CONDITIONS: POST-CONSTRUCTION BEST MANAGEMENT PRACTICES

- A. All storm drain inlet structures within the project boundaries must be stamped and/or stenciled (or equivalent) with appropriate language prohibiting non-storm water discharges.
- B. All post-construction BMPs, including those described in the *Project Specific Water Quality Management Plan Temecula Medical Center*, prepared by URS Corporation and dated June 2011, must be sized to comply with the following numeric sizing criteria and treat 100 percent of the on-site new impervious surfaces associated with the project:
 1. Volume
Volume-based BMPs must be designed to mitigate (infiltrate, filter, or treat) either:
 - a. The volume of runoff produced from a 24-hour 85th percentile storm event, as determined from the local historical rainfall record (0.8 inch approximate average for the Riverside County area); or

- b. The volume of runoff, as determined from the local historical rainfall record, that achieves approximately the same reduction in pollutant loads and flows as achieved by mitigation of the 85th percentile 24-hour runoff event; or
2. Flow
Flow-based BMPs must be designed to mitigate (infiltrate, filter, or treat) either:
 - a. The maximum flow rate of runoff produced from a rainfall intensity of 0.2 inch of rainfall per hour; or
 - b. The maximum flow rate of runoff produced by the 85th percentile hourly rainfall intensity, as determined from the local historical rainfall record, multiplied by a factor of two; or
 - c. The maximum flow rate of runoff, as determined from the same reduction in pollutant loads and flows as achieved by mitigation of the 85th percentile hourly rainfall intensity multiplied by a factor of two.
- C. Post-construction BMPs must be installed and functional prior to occupancy or planned use. Post-construction BMPs must be installed according to the two Phases in Attachment 4 (Phase I and Buildout).
 - D. Universal Health Services, Inc. must conduct the following for all post-construction BMPs (as described in the *Project Specific Water Quality Management Plan Temecula Medical Center*, prepared by URS Corporation and dated June 2011) and storm water discharge points:
 1. Regularly inspect and maintain post-construction BMPs for the life of the project per manufactures' specifications and industry standards;
 2. No less than one time per year assess the performance of the post-construction BMPs and discharge points and identify any necessary corrective measures;
 3. Have all preventive and corrective maintenance performed;
 4. Inspect all post-construction BMPs and storm water discharge points no less than one time per year, immediately prior to the commencement of the rainy season (October 1) and after every storm event exceeding 0.5 inches of precipitation; and

5. Maintain a log documenting all BMP inspections and maintenance activities.

V. ADDITIONAL CONDITIONS: COMPENSATORY MITIGATION

- A. Mitigation for permanent discharges to 0.19 acres (1,243 linear feet) of non-wetland waters of the United States must be achieved as follows:
 1. Off-site procurement of no less than 1.9 acres (1,243 linear feet) of restoration OR 0.19 acres (1,243 linear feet) of establishment of waters of the United States within the Santa Margarita Hydrologic Unit. The proposed mitigation, including any habitat mitigation and monitoring plans, must be submitted to the San Diego Water Board for approval prior to procurement.
- B. The construction of off-site mitigation must be completed no later than 9 months following the initial discharge of dredge or fill material into on-site waters. Delays in implementing mitigation must be compensated for by an increased mitigation implementation of 10 percent of the cumulative compensatory mitigation for each month of delay.
- C. Universal Health Services, Inc. must restore all areas of temporary impacts and all other areas of temporary disturbance which could result in a discharge or a threatened discharge to waters of the United States/State. Restoration must include grading of disturbed areas to pre-project contours and revegetation with native species. Universal Health Services, Inc. must implement all necessary BMPs to control erosion and runoff from areas associated with this project.
- D. The mitigation site must be designed, constructed, and maintained to meet the following conditions:
 1. Most of the channel through the mitigation site is characterized by equilibrium conditions, with no evidence of severe aggradation or degradation;
 2. As viewed along cross-sections, the channel and buffer have a variety of slopes, or elevations, that are characterized by different moisture gradients. Each sub-slope contains physical patch types or features that contribute to irregularity in height, edges, or surface and to complex topography overall; and
 3. The mitigation site has a well-developed plant community characterized by a high degree of horizontal and vertical interspersion among plant zones and layers.

- E. Mitigation shall be considered acceptable once it has met the pre-determined success criteria for that site, and shall be maintained, in perpetuity, in a manner that consistently meets the final success criteria identified.
- F. Mitigation areas must be maintained free of perennial exotic plant species including, but not limited to, pampas grass, giant reed, tamarisk, sweet fennel, tree tobacco, castor bean, and pepper tree. Annual exotic plant species must not occupy more than 5 percent of the on-site or off-site mitigation areas.
- G. The San Diego Water Board acceptance of the final mitigation plan must not be construed as approval of the mitigation site or plan for use by other current or future projects that are planning to use additional acreage at the site for mitigation.
- H. Any maintenance activities that do not contribute to the success of the mitigation site and enhancement of beneficial uses and ecological functions and services are prohibited. Maintenance activities are limited to the removal of trash and debris, removal of exotic plant species, replacement of dead native plant species and remedial measures deemed necessary for the success of the restoration program.
- I. If at any time during the implementation and establishment of the mitigation area(s), and prior to verification of meeting success criteria, a catastrophic natural event (e.g., fire, flood) occurs and impacts the mitigation area, Universal Health Services, Inc. is responsible for repair and replanting of the damaged area(s).
- J. For the purpose of determining mitigation credit for the removal of exotic/invasive plant species, only the actual area occupied by exotic/invasive plant species must be quantified to comply with mitigation requirements.
- K. For purposes of this Certification, establishment is defined as the creation of vegetated or unvegetated waters of the United States/State where the resource has never previously existed (e.g. conversion of nonnative grassland to a freshwater marsh). Restoration is divided into two activities, re-establishment and rehabilitation. Re-establishment is defined as the return of natural/historic functions to a site where vegetated or unvegetated waters of the United States/State previously existed (e.g., removal of fill material to restore a drainage). Rehabilitation is defined as the improvement of the general suite of functions of degraded vegetated or unvegetated waters of the United States/State (e.g., removal of a heavy infestation or monoculture of exotic plant species from jurisdictional areas

and replacing with native species). Enhancement is defined as the improvement to one or two functions of existing vegetated or unvegetated waters of the United States/State (e.g., removal of small patches of exotic plant species from an area containing predominantly natural plant species). Preservation is defined as the acquisition and legal protection from future impacts in perpetuity of existing vegetated or unvegetated waters of the United States/State (e.g., conservation easement).

VI. MONITORING REQUIREMENTS:

- A. Monitoring of the mitigation site must utilize the California Rapid Assessment Method (CRAM) to establish baseline conditions at the project and mitigation site (i.e. conditions prior to project impacts and mitigation), set success criteria, and assess mitigation site progress. Assessments must be utilized for the baseline and annually until success criteria has been met.

VII. NOTIFICATION REQUIREMENTS:

- A. Universal Health Services, Inc. must report to the San Diego Water Board any noncompliance which may endanger human health or the environment. Any information shall be provided orally **within 24 hours** from the time Universal Health Services, Inc. becomes aware of the circumstances. A written submission shall also be provided within five (5) days of the time Universal Health Services, Inc. becomes aware of the circumstances. The written submission shall contain a written description of the incident and its cause, the period of the noncompliance including exact dates and times, and if the noncompliance has not been corrected, the anticipated time it is expected to continue; and steps taken or planned to reduce, eliminate, and prevent reoccurrence of the noncompliance. The San Diego Water Board may waive the above-required written report under this provision on a case-by-case basis if an oral report has been received within 24 hours.
- B. This Certification is not transferable in its entirety or in part to any person except after notice to the San Diego Water Board in accordance with the following terms:
 1. Transfer of Property Ownership: Universal Health Services, Inc. must notify the San Diego Water Board of any change in ownership of the project area. Notification of change in ownership must include, but not be limited to, a statement that Universal Health Services, Inc. has provided the purchaser with a copy of the Section 401 Water Quality Certification and that the purchaser understands and accepts the

certification requirements and the obligation to implement them or be subject to liability for failure to do so; the seller and purchaser must sign and date the notification and provide such notification to the Executive Officer of the San Diego Water Board **within 10 days of the transfer of ownership.**

2. **Transfer of Mitigation Responsibility:** Any notification of transfer of responsibilities to satisfy the mitigation requirements set forth in Section V and VII of this Certification must include a signed statement from an authorized representative of the new party (transferee) demonstrating acceptance and understanding of the responsibility to comply with and fully satisfy the mitigation conditions and agreement that failure to comply with the mitigation conditions and associated requirements may subject the transferee to enforcement by the San Diego Water Board under Water Code section 13385, subdivision (a). Notification of transfer of responsibilities meeting the above conditions must be provided to the San Diego Water Board **within 10 days of the transfer date.**
3. **Transfer of Post-Construction BMP Maintenance Responsibility:** Universal Health Services, Inc. assumes responsibility for the inspection and maintenance of all post-construction structural BMPs until such responsibility is legally transferred to another entity. At the time maintenance responsibility for post-construction BMPs is legally transferred Universal Health Services, Inc. must submit to the San Diego Water Board a copy of such documentation and must provide the transferee with a copy of a long-term BMP maintenance plan that complies with manufacturer specifications. Notification of transfer of responsibilities meeting the above conditions must be provided to the San Diego Water Board **within 10 days of the transfer date.**

Upon properly noticed transfers of responsibility, the transferee assumes responsibility for compliance with this Certification and references in this Certification to Universal Health Services, Inc. will be interpreted to refer to the transferee as appropriate. Transfer of responsibility does not necessarily relieve Universal Health Services, Inc. of this Certification in the event that a transferee fails to comply.

- C. Universal Health Services, Inc. must notify the San Diego Water Board in writing **at least 5 days prior to** the actual commencement of dredge, fill, and discharge activities.
- D. **Within 9 months from the actual commencement of dredge, fill, and discharge activities,** Universal Health Services, Inc. must provide the San Diego Water Board with verification that 1.9 acres of restoration OR 0.19 acres of establishment mitigation has been procured (see Section

V.A.1). The verification must include proof of a completed preservation mechanism that will protect all mitigation areas and their buffers in perpetuity. The conservation easement, deed restriction, or other legal limitation on the mitigation property must be adequate to demonstrate that the site will be maintained without future development or encroachment on the site which could otherwise reduce the functions and values of the site for the variety of beneficial uses of waters of the United States that it supports. The legal limitation must prohibit, without exception, all residential, commercial, industrial, institutional, and transportation development, and any other infrastructure development that would not maintain or enhance the wetland and streambed functions and values of the site. The preservation mechanism must clearly prohibit activities that would result in soil disturbance or vegetation removal, other than the removal of non-native vegetation. Other infrastructure development to be prohibited includes, but is not limited to, additional utility lines, maintenance roads, and areas of maintained landscaping for recreation.

VIII. REPORTING REQUIREMENTS:

- A. Universal Health Services, Inc. must submit annual progress reports describing status of compliance with all requirements of this Certification to the San Diego Water Board prior to **August 1** of each year following the issuance of this Certification until the project has reached completion. Universal Health Services, Inc. must submit a Final Project Annual Report to the San Diego Water Board **prior to August 1 following completion of the project**. The reports must include the following:
1. Date of construction initiation.
 2. Projected date of construction completion.
 3. Status of BMPs for the project.
 4. Final Project Report: As-built drawings no bigger than 11"X17," including GPS coordinates or GIS shapefiles of post-construction BMPs.
- B. Mitigation monitoring reports must be submitted annually until mitigation has been deemed successful. Annual monitoring reports must be submitted **prior to December 1 of each year**. Monitoring reports must include, but not be limited to, the following:
1. Names, qualifications, and affiliations of the persons contributing to the report;

2. Date of initiation of mitigation installation and date mitigation installation was completed.
 3. Mitigation as-builts, including topography maps and planting locations.
 4. Tables presenting the raw data collected in the field as well as analyses of the physical and biological data;
 5. Topographic complexity characteristics at each mitigation site;
 6. Upstream and downstream habitat and hydrologic connectivity;
 7. Source of hydrology;
 8. Width of native vegetation buffer around the entire mitigation site;
 9. Qualitative and quantitative comparisons of current mitigation conditions with pre-construction conditions and previous mitigation monitoring results. CRAM must be utilized.
 10. Stream Photodocumentation, including all areas of permanent and temporary impact, prior to and after project construction, and mitigation areas, including all areas of permanent and temporary impact, prior to and after project construction. Photo documentation must be conducted in accordance with guidelines posted at http://www.waterboards.ca.gov/sandiego/water_issues/programs/401_certification/docs/StreamPhotoDocSOP.pdf. In addition, photo documentation must include Geographic Positioning System (GPS) coordinates for each of the photo points referenced.
 11. A Survey report documenting boundaries of mitigation area, including Geographic Information System (GIS) shape files (polygons) of the impact and mitigation areas (Two GPS readings (points) must be taken on each line of the polygon and the polygon must have a minimum of 10 points). GIS metadata must also be submitted.
- C. The submittal of information under this Certification is required pursuant to California Water Code (CWC) sections 13267 and 13283. Civil liability may be administratively imposed by the San Diego Water Board for failure to submit required information pursuant to CWC section 13268 or 13385.
- D. All reports and information submitted to the San Diego Water Board must be submitted in both hardcopy and electronic format. The preferred electronic format for each report submission is one file in PDF format that is also Optical Character Recognition (OCR) capable.

E. All applications, reports, or information submitted to the San Diego Water Board must be signed and certified as follows:

1. For a corporation, by a responsible corporate officer of at least the level of vice president.
2. For a partnership or sole proprietorship, by a general partner or proprietor, respectively.
3. For a municipality, or a state, federal, or other public agency, by either a principal executive officer or ranking elected official.
4. A duly authorized representative may sign applications, reports, or information if:
 - a. The authorization is made in writing by a person described above.
 - b. The authorization specifies either an individual or position having responsibility for the overall operation of the regulated activity.
 - c. The written authorization is submitted to the San Diego Water Board Executive Officer.

F. All applications, reports, or information submitted to the San Diego Water Board must be signed and certified as follows:

"I certify under penalty of law that I have personally examined and am familiar with the information submitted in this document and all attachments and that, based on my inquiry of those individuals immediately responsible for obtaining the information, I believe that the information is true, accurate, and complete. I am aware that there are significant penalties for submitting false information, including the possibility of fine and imprisonment."

G. Universal Health Services, Inc. must submit reports required under this Certification, or other information required by the San Diego Water Board, to:

Executive Officer
California Regional Water Quality Control Board
San Diego Region
Attn: 401 Certification; Project No. 11C-031
9174 Sky Park Court, Suite 100
San Diego, California 92123

VIII. CEQA FINDINGS:

- A. The City of Temecula is the lead agency under the California Environmental Quality Act (Public Resources Code section 21000, et seq., (CEQA)), and filed a Notice of Determination on February 17, 2011, for an Environmental Impact Report (EIR) under CEQA Guidelines Title 14, California Code of Regulations. The City of Temecula has determined the project, without mitigation, will have a significant effect on the environment and therefore, identified mitigation measures for the project to reduce the effects on the environment to less than significant.
- B. The San Diego Water Board has reviewed the lead agency's EIR and also finds that the project as proposed will have a significant effect on the environment. However, this Certification contains conditioned mitigation measures that will result in the project having less than significant environmental effects.

IX. PUBLIC NOTIFICATION OF PROJECT APPLICATION:

- A. On April 22, 2011, receipt of the project application was posted on the San Diego Water Board web site to serve as appropriate notification to the public. No public comments were received.

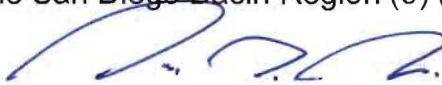
X. SAN DIEGO WATER BOARD CONTACT PERSON:

Chad Loflen
California Regional Water Quality Control Board, San Diego Region
9174 Sky Park Court, Suite 100
San Diego, CA 92123
858-467-2727
cloflen@waterboards.ca.gov

XI. WATER QUALITY CERTIFICATION:

I hereby certify that the proposed discharge from the **Temecula Regional Medical Center Project** (Project No. 11C-031) will comply with the applicable provisions of sections 301 ("Effluent Limitations"), 302 ("Water Quality Related Effluent Limitations"), 303 ("Water Quality Standards and Implementation Plans"), 306 ("National Standards of Performance"), and 307 ("Toxic and Pretreatment Effluent Standards") of the Clean Water Act. This discharge is also regulated under State Water Board Order No. 2003-0017-DWQ, "*Statewide General Waste Discharge Requirements for Dredged or Fill Discharges That Have Received State Water Quality Certification (General WDRs)*," which requires compliance with all conditions of this Water Quality Certification. Please note that enrollment under Order No. 2003-017-DWQ is conditional and, should new information come to our attention that indicates a water quality problem, the San Diego Water Board may issue individual waste discharge requirements at that time.

Except insofar as may be modified by any preceding conditions, all Certification actions are contingent on (a) the discharge being limited to, and all proposed mitigation being completed in strict compliance with, the applicants' project description and/or on the attached Project Information Sheet, and (b) on compliance with all applicable requirements of the Water Quality Control Plan for the San Diego Basin Region (9) (Basin Plan).


James G. Smith, AEO
for DAVID W. GIBSON
Executive Officer
Regional Water Quality Control Board

26 Sep 2011
Date

- Attachments:
1. Project Information
 2. Distribution List
 3. Location and Site Maps
 4. Post-construction BMP Maps

**ATTACHMENT 1
PROJECT INFORMATION**

Applicant: Universal Health Services, Inc.
Attention: Tara Laski
816 South Belle Street
Corona, CA 92882
Telephone: 949-466-9647
Facsimile:
Email: tara.laski@uhsinc.com

Applicant
Representatives: URS Corporation
Attention: Lincoln Hulse
2020 East First Street, Suite 400
Santa Ana, CA 92705
Telephone: 714-648-2824
Facsimile: 714-433-7701
Email: Lincoln_hulse@urscorp.com

Project Name: Temecula Regional Medical Center

Project Location: Latitude: 33.480682 N
Longitude: 117.106621 W

Type of Project: Commercial Development

Need for Project: According to the application:
"The proposed Project would:
• Provide high-quality health services to the residents of Temecula and surrounding communities
• Provide a regional hospital facility that includes standard hospital services, with outpatient care, rehabilitation, and medical offices
• Provide a regional hospital facility designed to be an operationally efficient, state-of-the-art facility that meets the needs of the region and hospital doctors
• Provide medical offices adjacent to the hospital facility to meet the needs of doctors and patients who need ready access to the hospital for medical procedures
• Support development of biomedical, research, and office facilities to diversify Temecula's economic and employment base"

Project Description: The proposed project is located in the City of Temecula and consists of the construction of a regional hospital and associated medical buildings. The project will occur in two

phases, with phase I to be completed by June 2013 and ultimate build-out by 2025. The project site includes 4 unnamed drainages, tributary to Temecula Creek. The project will avoid the largest tributary, located on the eastern portion of the property. The project will fill the other 3 unnamed tributaries, resulting in permanent impacts to 0.19 acres (1,243 linear feet) of unvegetated streambed. The 3 unnamed tributaries to be impacted are anthropogenically created waters that drain the project site and convey storm flows from adjacent developments. Mitigation for impacts to waters of the U.S. will occur within the watershed, and will be either restoration or establishment at a 10:1 or 1:1 ratio, respectively. The procurement of mitigation must occur within 9 months of the discharge of dredge or fill material to waters of the U.S. The project will treat 100% of new on-site impervious surfaces associated with project construction (utilizing a combination of low impact development approaches). A portion of the site will utilize subsurface infiltration to retain flows on-site, while other portions of the site will utilize a LID treatment train consisting of rain gardens, modular wetland units, bioswales, and/or sand filters, which will treat flows prior to entry into vegetated detention basins. A small portion of curb and gutter which cannot be treated will be built off-site (0.04 acres), and a portion of off-site existing impervious surfaces (0.12 acres) will be removed through the construction of drought-tolerant vegetated median.

Federal
Agency/Permit:

U.S. Army Corps of Engineers NWP 39, Crystel Doyle

Other Required
Regulatory Approvals:

California Department of Fish and Game Streambed
Alteration Agreement 1600-2011-0146-R6, Joanna Gibson

California
Environmental Quality
Act (CEQA)
Compliance:

Environmental Impact Report, NOD: February 17, 2011,
SCH# 2005031017, Lead Agency: City of Temecula

Receiving Water:

4 Unnamed tributaries to Temecula Creek, Santa Margarita
HU, Pechanga HA, Pauba HSA

Affected Waters of the
United States:

Permanent:
Unvegetated Streambed: 0.19 acres, 1,243 linear feet

Dredge Volume: None

Related Projects Implemented/to be Implemented by the Applicant(s): None

Compensatory Mitigation: Off-Site Procurement
Restoration: 1.9 acres of in-watershed restoration
OR
Establishment: 0.19 acres of in-watershed establishment

Mitigation Location: Off-site TBD.

Best Management Practices (BMPs): 100% of new impervious surfaces will be treated by post-construction BMPs. The project utilizes on-site infiltration or a biofiltration/detention basin treatment train:

Project Specific Water Quality Management Plan Temecula Medical Center, prepared by URS Corporation and dated June 2011

Public Notice: April 22, 2011 (no comments received)

Inspection: n/a

Fees: Total Due: \$8,595
Paid: \$640 (check No. 088153338)
Paid: \$7,995 (check No. 088165744)

CIWQS: Regulatory Measure ID: 378781
Place ID: 765725
Party ID: 526659

**ATTACHMENT 2
E-MAIL DISTRIBUTION LIST**

Crystel Doyle
U.S. Army Corps of Engineers, Regulatory Branch
Prado Field Office
crystel.l.doyle@usace.army.mil

Joanna Gibson
California Department of Fish and Game
Inland Deserts Region
jgibson@cdfg.ca.gov

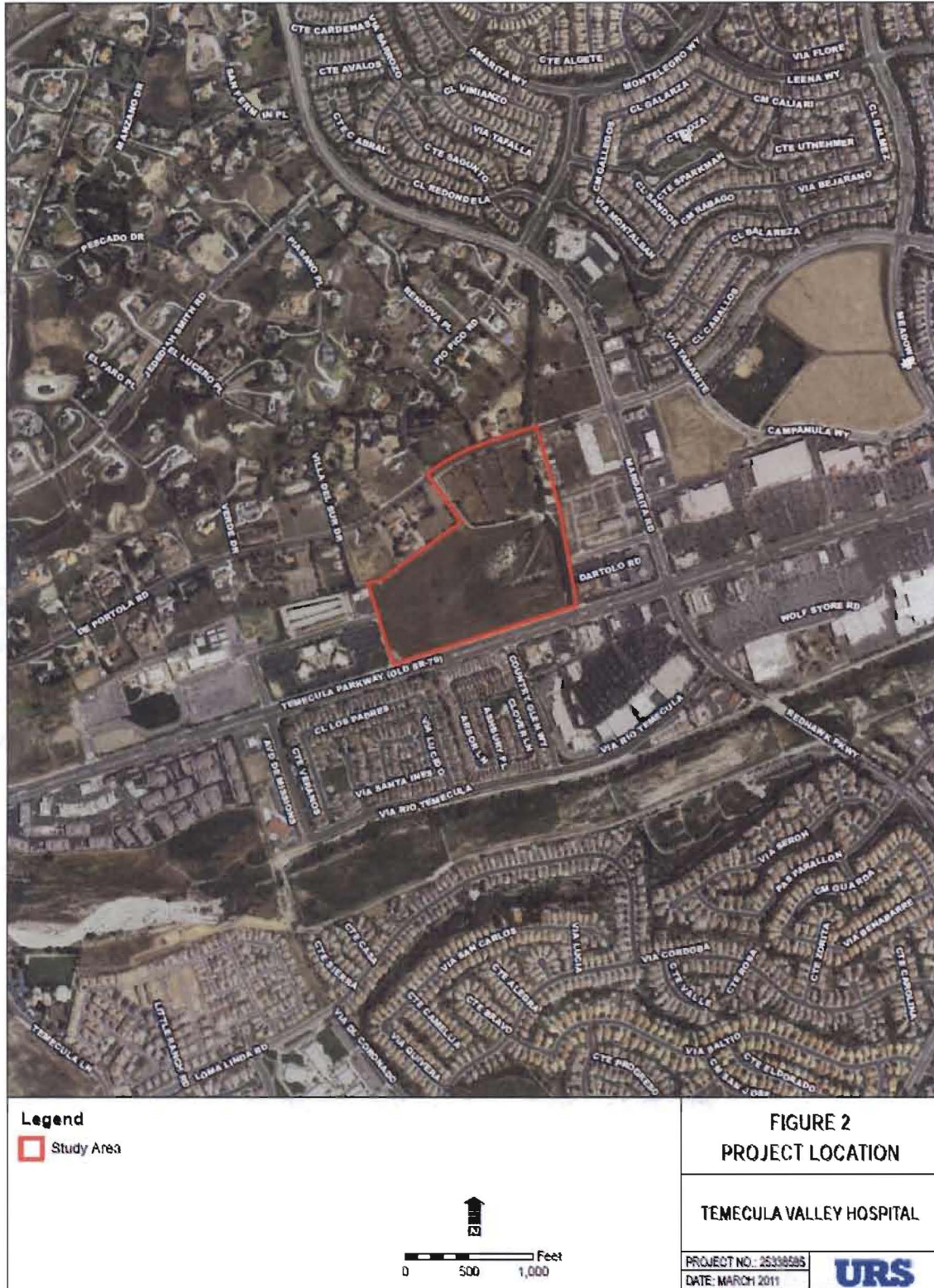
U.S. EPA, OWOW, Region 9
R9-WTR8-Mailbox@epa.gov

State Water Resources Control Board, Division of Water Quality
401 Water Quality Certification and Wetlands Unit
Stateboard401@waterboards.ca.gov

Lincoln Hulse
Cynthia Gabaldon
URS Corporation
Lincoln_Hulse@URSCorp.com
Cynthia_Gabaldon@URSCorp.com

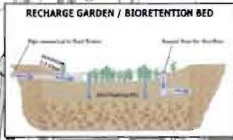
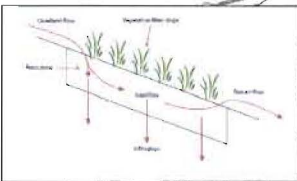
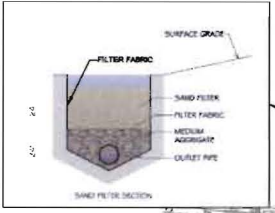
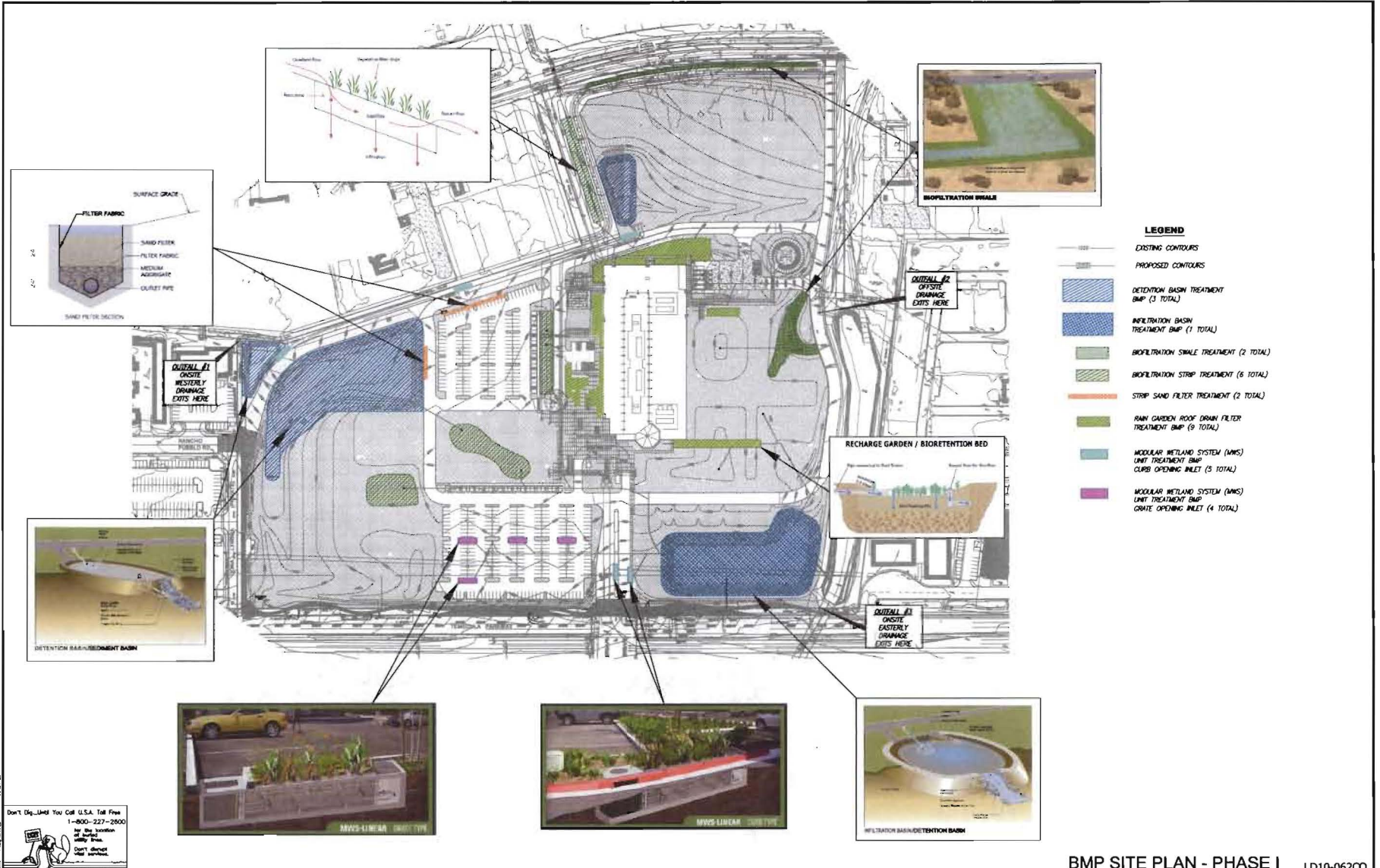
ATTACHMENT 3 LOCATION AND SITE MAPS







Source: Aerial Express, 2010.

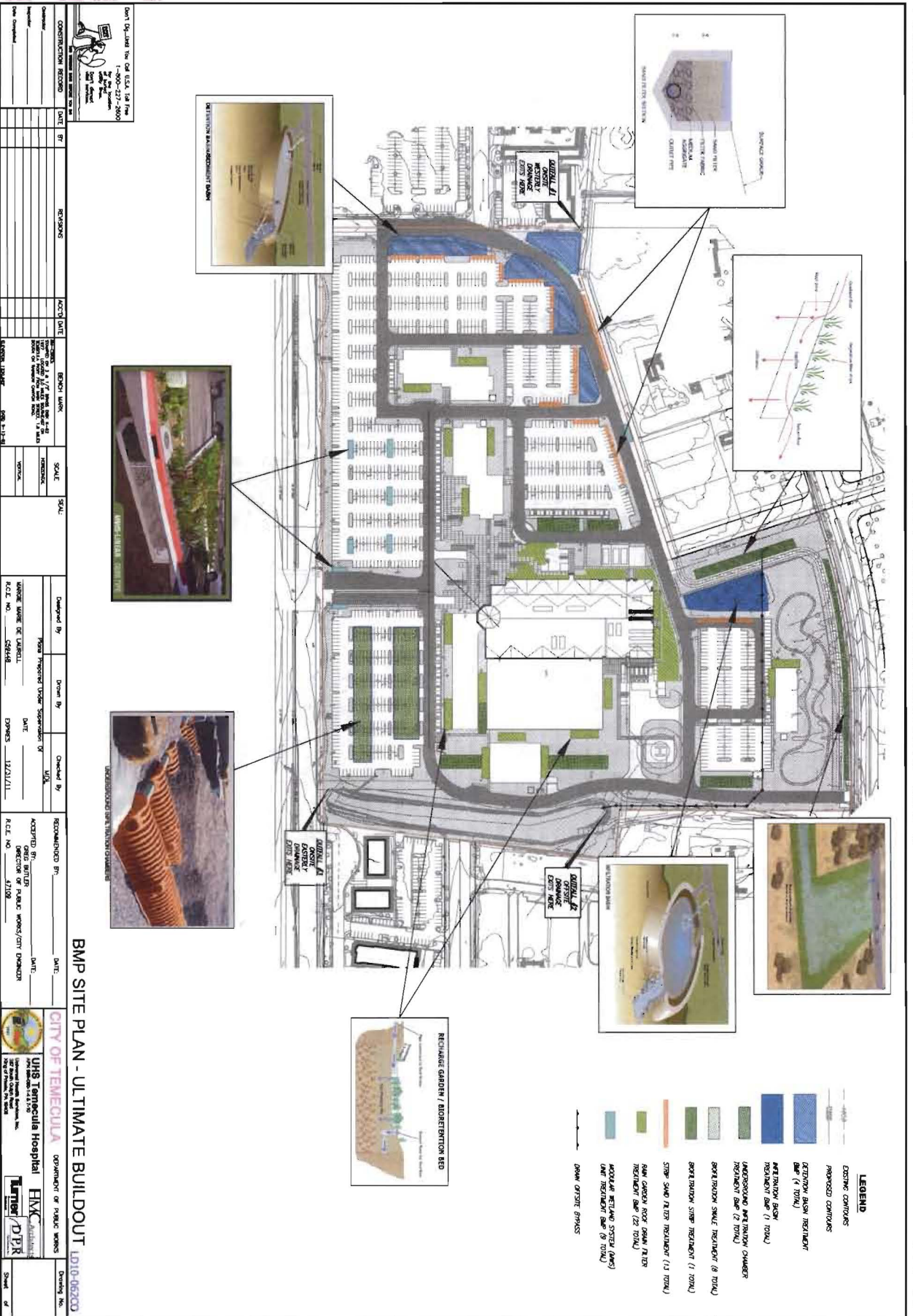


Don't Dig...Until You Call U.S.A. Toll Free
1-800-227-2800
for the location of buried utilities.
Call 811.
Call 811.
Call 811.

CONSTRUCTION RECORD				DATE	BY	REVISIONS	ACCD	DATE	BENCH MARK	SCALE	SEAL	DESIGNED BY	DRAWN BY	CHECKED BY	RECOMMENDED BY:	DATE:	CITY OF TEMECULA	DEPARTMENT OF PUBLIC WORKS	DRAWING NO.								
REVISIONS CHANGED TO 2" & 1 1/2" BENCH MARK TO BE SET 10' FROM CURB TO BE SET ON EXISTING 10' HIGH SIDE WALK. 14' BENCH MARK ON MARKED CURB ONLY.										HORIZONTAL		MARGIE MARE DE LAURELL R.C.E. NO. C29448		DATE EXPRES 12/31/11		M.D.L.		DATE:		ACCEPTED BY: GREG BUTLER DIRECTOR OF PUBLIC WORKS/CITY ENGINEER R.C.E. NO. 47109		UHS Temecula Hospital APR 08-08-14 & 1-10 Universal Health Services, Inc. 167 South Coast Road King of Prussia, PA 19381		EIMC Architects Turner D'ER		Drawing No. Sheet of	

BMP SITE PLAN - PHASE I LD10-06200

ALL RIGHTS RESERVED. THIS DOCUMENT IS THE PROPERTY OF TURNER D'ER ARCHITECTS AND ENGINEERS. NO PART OF THIS DOCUMENT IS TO BE REPRODUCED OR TRANSMITTED IN ANY FORM OR BY ANY MEANS, ELECTRONIC OR MECHANICAL, INCLUDING PHOTOCOPYING, RECORDING, OR BY ANY INFORMATION STORAGE AND RETRIEVAL SYSTEM.



LEGEND

EXISTING CONTIGUOUS	PROPOSED CONTIGUOUS
RETENTION BASIN TREATMENT BASIN (4 TOTAL)	RETENTION BASIN TREATMENT BASIN (1 TOTAL)
INTEGRATED BEST PRACTICES CHAMBER TREATMENT BASIN (2 TOTAL)	BRICK PAVEMENT SWALE TREATMENT (8 TOTAL)
BRICK PAVEMENT SWALE TREATMENT (1 TOTAL)	STEEP SAND FILTER TREATMENT (12 TOTAL)
SANDY SAND FILTER TREATMENT (12 TOTAL)	RAIN GARDEN POC (25 TOTAL)
MODULAR RETAINMENT SYSTEM (MRS) TREATMENT BASIN (8 TOTAL)	
DRAIN OFFSITE SWISS	

Don't Call Us! Call ELEC 1-877-728-6868

CONSTRUCTION RECORDS

DATE: 07/2019

REVISIONS

NO.	DATE	DESCRIPTION
1	07/2019	ISSUED FOR PERMIT

SCALE: 1" = 40'

DATE: 07/2019

PROJECT: UHS TEMECULA HOSPITAL

PROJECT NO: 1501-06200

PROJECT ADDRESS: 15010 TEMECULA BLVD, TEMECULA, CA 92590

PROJECT CONTACT: JIM MURPHY, 909-311-1811

DESIGNED BY: HOK

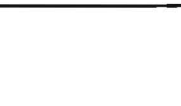
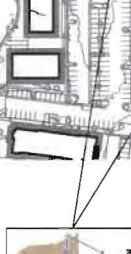
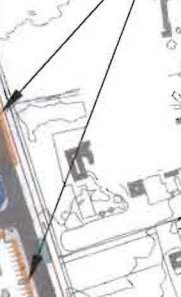
CHECKED BY: JIM MURPHY

DATE: 07/2019

PROJECT NO: 1501-06200

PROJECT ADDRESS: 15010 TEMECULA BLVD, TEMECULA, CA 92590

PROJECT CONTACT: JIM MURPHY, 909-311-1811



BMP SITE PLAN - ULTIMATE BUILDOUT 1501-06200

CITY OF TEMECULA

UHS Temecula Hospital

DEPARTMENT OF PUBLIC WORKS

HAK Associates

DMR

15010 TEMECULA BLVD, TEMECULA, CA 92590

PROJECT NO: 1501-06200

PROJECT ADDRESS: 15010 TEMECULA BLVD, TEMECULA, CA 92590

PROJECT CONTACT: JIM MURPHY, 909-311-1811

