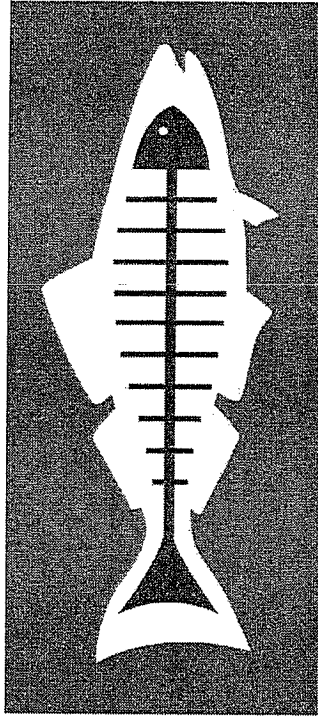


Heal the Bay Comments on the Draft 2008 303(d) List

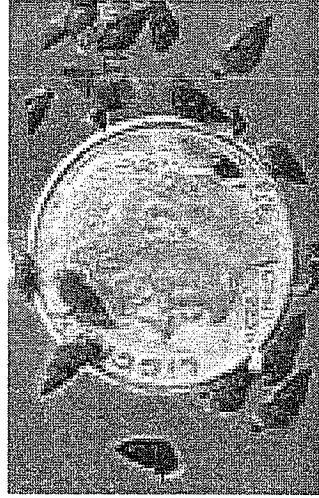


Heal the Bay

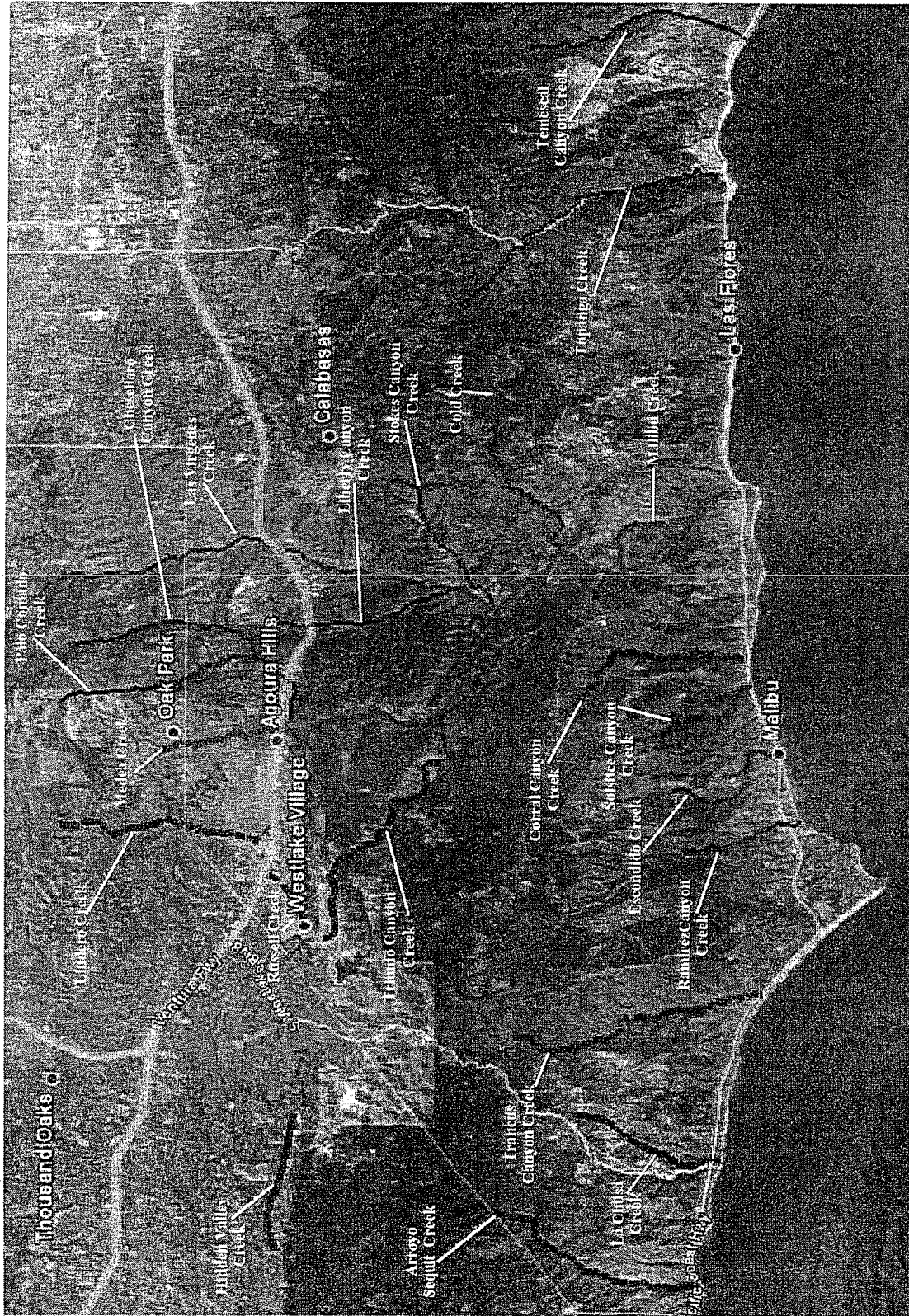
July 16, 2009

Invasive Species

New Zealand Mudsnail







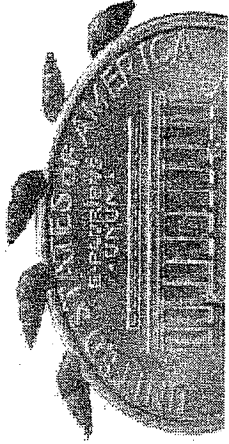
Red: NZMS Presence 2008/2009

WARNING

**New Zealand Mudsnails Threaten Native Wildlife
YOU CAN STOP THEIR SPREAD!**

New Zealand Mudsnails are **INVASIVE** aquatic snails. They take over habitat that supports native wildlife, including endangered species.

Mudsnails can take over an entire creek. A single snail can result in a colony of more than 40 million snails in just one year.



New Zealand mudsnails can be as small as a grain of sand or up to 1/8 inch. They are typically brown or black.

**Prevent the spread of New Zealand Mudsnails!
THE EASIEST WAY TO PREVENT
MUDSNAILS FROM SPREADING IS TO AVOID
WATER CONTACT WHEN POSSIBLE.**

However, if your activities include water contact, please follow these simple steps to reduce the chances of spreading this invader to another stream:

(1) Don't be a CARRIER!

Avoid transferring anything wet (sandals, boots, waders, bikes and other sports gear, pets and horses) from stream to stream.

(2) Keep it DRY!

After every trip to a stream or lake, remove all mud and debris, visually inspect, and completely dry your belongings. If you can, put your wet items in the dryer on high heat for a minimum of 2 hours. Air drying your belongings at temperatures of at least 85°F for 24 - 48 hours will also kill mudsnails.

**Help protect our creeks and streams -
It only takes ONE snail to infest a waterbody!**



Visit WWW.MUDSNAILS.COM for more information

- “The State included on its final list several waters listed due to the presence of exotic species. In a letter to the State dated December 17, 2004, EPA indicated that it would be appropriate for the State to include on its 303(d) lists waters impaired due to exotic invasive species. We continue to hold that view in approving the listings of these waters for exotic species.”

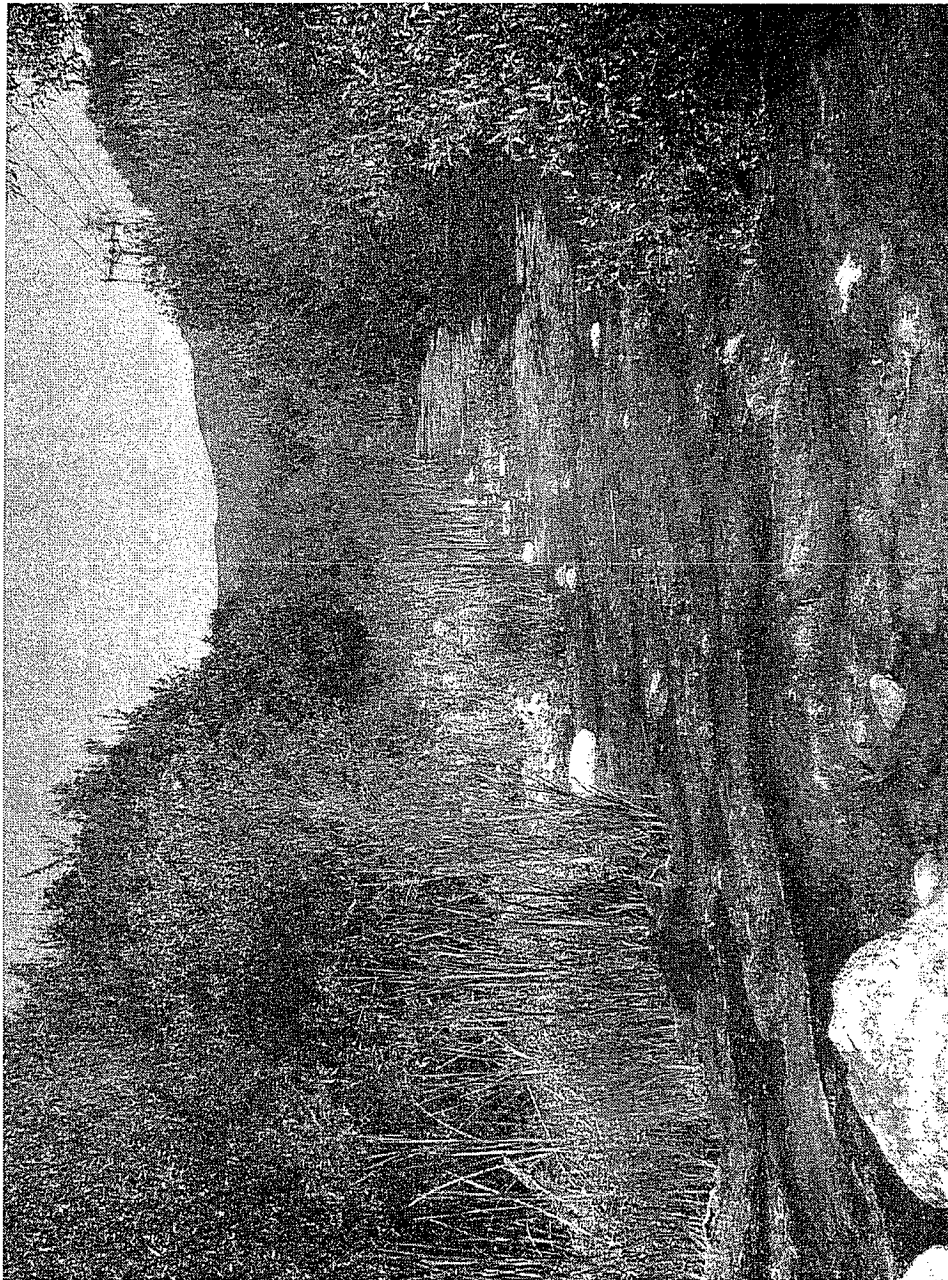
- Review of California's 2004-2006 Section 303(d)
List, Alexis Strauss

Benthic Macroinvertebrate Bioassessment: Index of Biotic Integrity ("IBI")

	Malibu Creek 1	Malibu Creek 12	Malibu Creek 15	Las Virgenes 5	Las Virgenes 9	Medea 7	Triunfo 17	Cold Creek 3 (reference)
Spring 2000	16			29		23		80
Fall 2001	24	23		34		26		76
Spring 2001	26	20		33		19		92
Fall 2001	39	37		33		34		76
Spring 2002	19	33	40	39	59	23	19	83
Fall 2002		27	24	26	26			80
Spring 2003	26	21	34	20	46	9	4	84
Fall 2003	23	31	23	29		9		64
Winter 2005	26	20		17	34	14	0	60
Spring 2006								
Fall 2006	26	17	17	14	34	16	20	73

Malibu Creek Watershed IBI Scores. Source: Heal the Bay.

Biostimulatory Substances



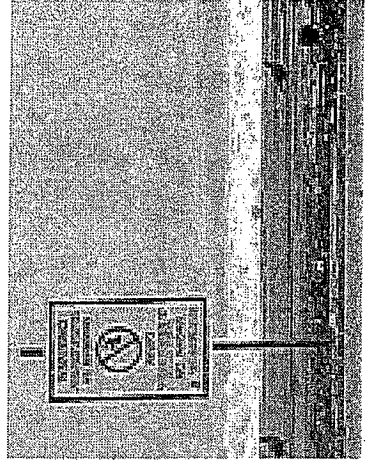
Calleguas Creek – Reach 10 (Arroyo Conejo Canyon).
Photograph taken in summer 2004 by Steve Lee of UCLA.

Bacteria Impairment

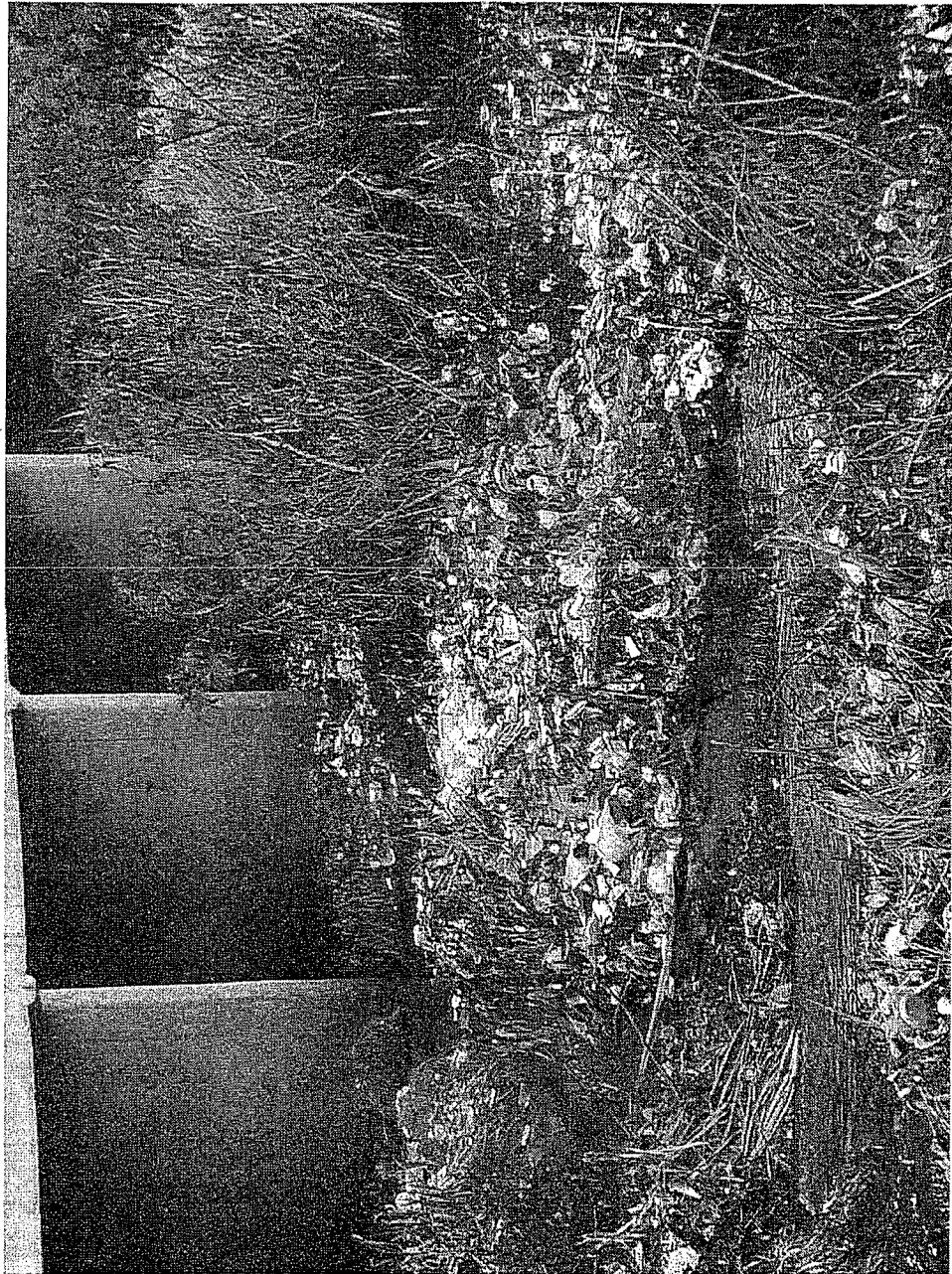
SWRCB Water-Contact Standards

30-day Geometric Mean – The following standards are based on the geometric mean of the five most recent samples from each site:

- i. Total coliform density shall not exceed 1,000 per 100 ml;
- ii. Fecal coliform density shall not exceed 200 per 100 ml; and
- iii. Enterococcus density shall not exceed 35 per 100ml.



Compton Creek Trash



This Page Intentionally
Left Blank