A photograph of a rocky stream flowing through a forest. The water is clear and shallow, splashing over numerous large, smooth, grey rocks. The surrounding forest is dense with green trees and foliage, with sunlight filtering through the canopy. The text is centered over the middle of the image.

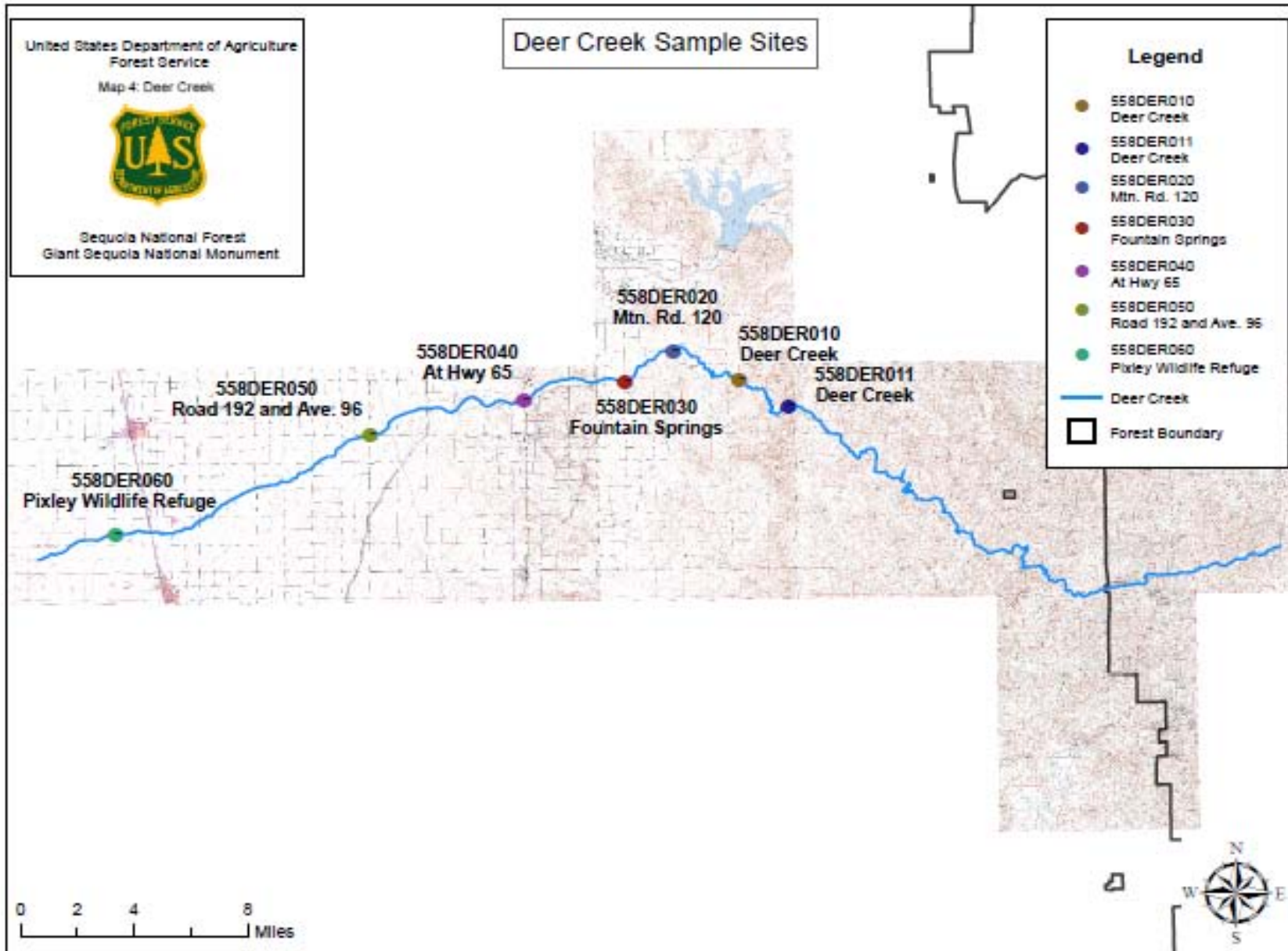
**Sequoia National Forests
Response to CVRWQCB
Public Comments**

A scenic photograph of a river flowing through a forest. The river is the central focus, with water splashing over several large, smooth, grey rocks. The banks are lined with tall, green grasses and various trees, some with thick trunks. Sunlight filters through the canopy, creating dappled light on the water and rocks. The overall atmosphere is peaceful and natural.

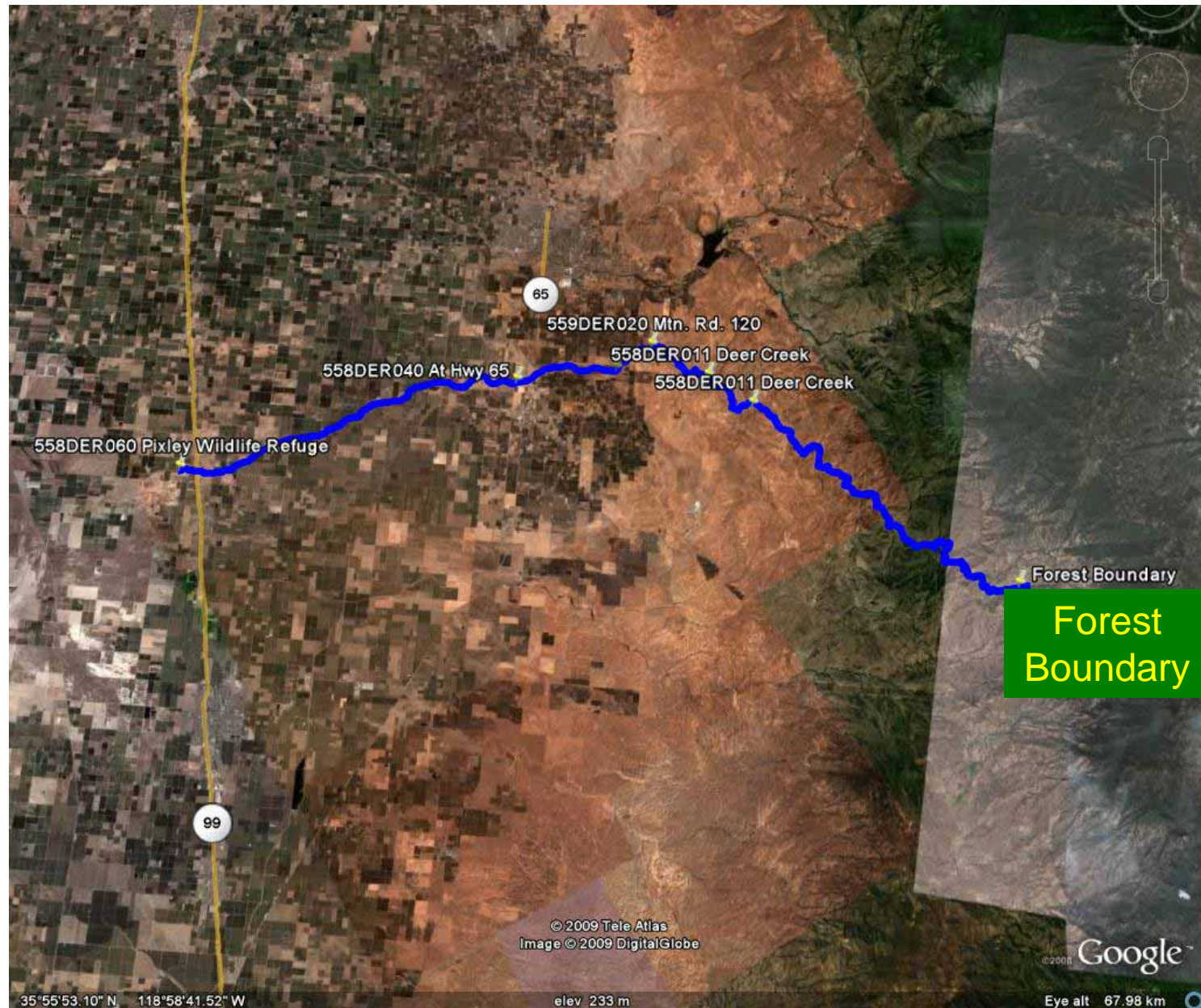
Water Segments Proposed for 303(d) listing

- Deer Creek, Tulare County
- Lake Isabella, Kern County
- Lower Kern River, Kern County
- Hume Lake, Fresno County

Deer Creek



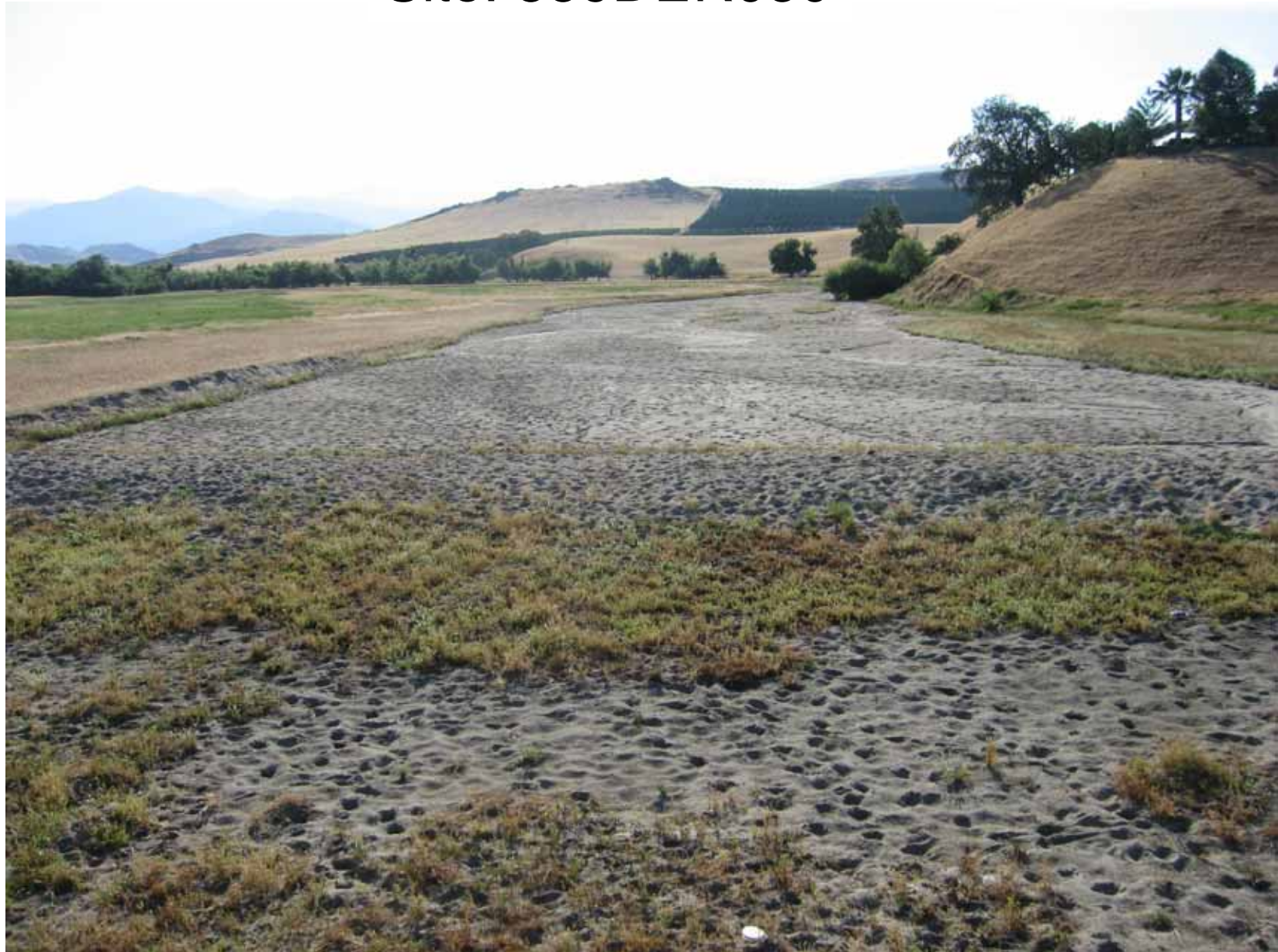
Sampling Sites on Irrigated Lands in Relationship to Forest Boundary



Site: 558DER040



Site: 559DER030



Site: 558DER120



Site: 558DER010



Site: 558DER011



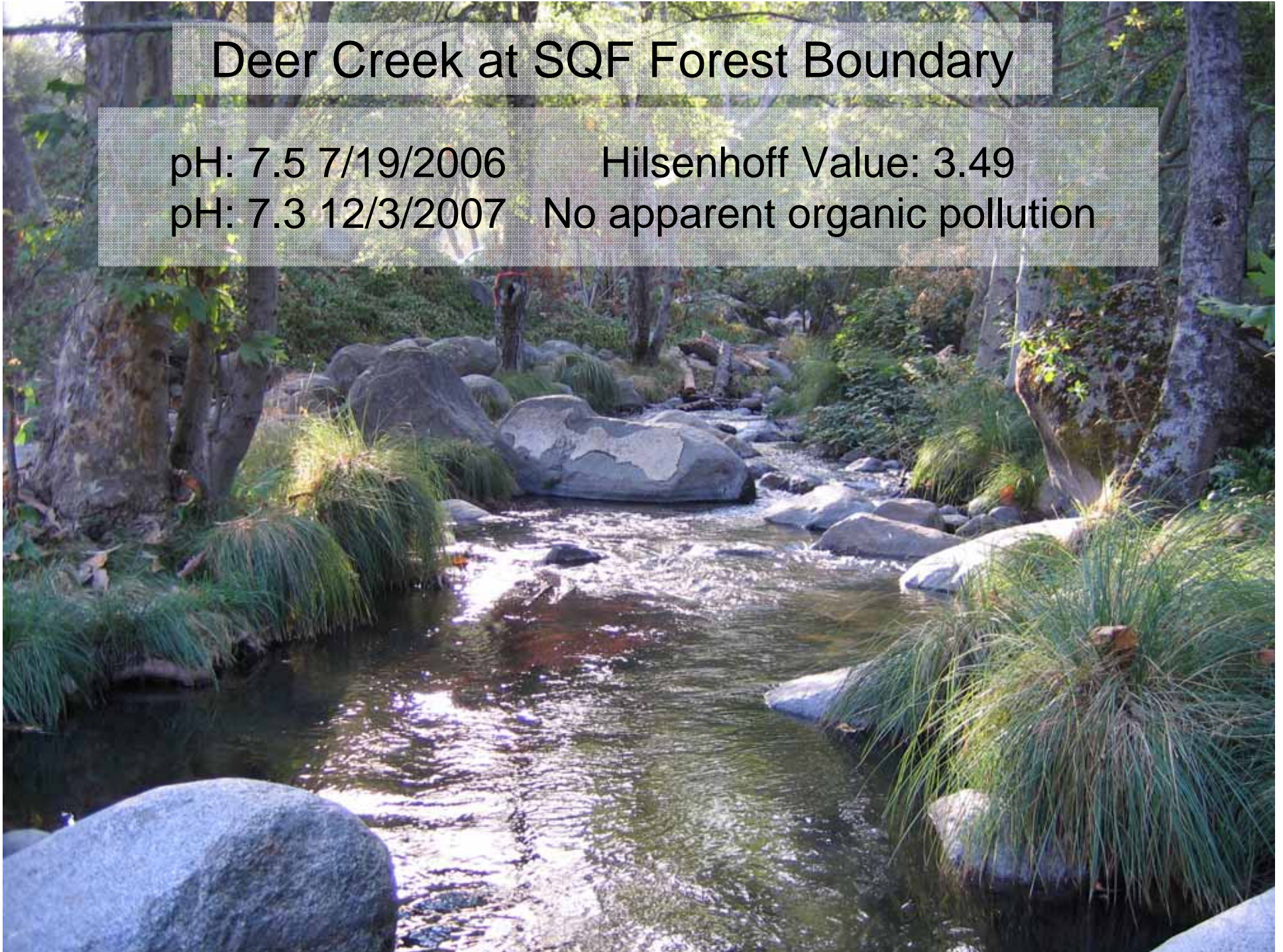
Deer Creek at SQF Forest Boundary


pH: 7.5 7/19/2006

Hilsenhoff Value: 3.49

pH: 7.3 12/3/2007

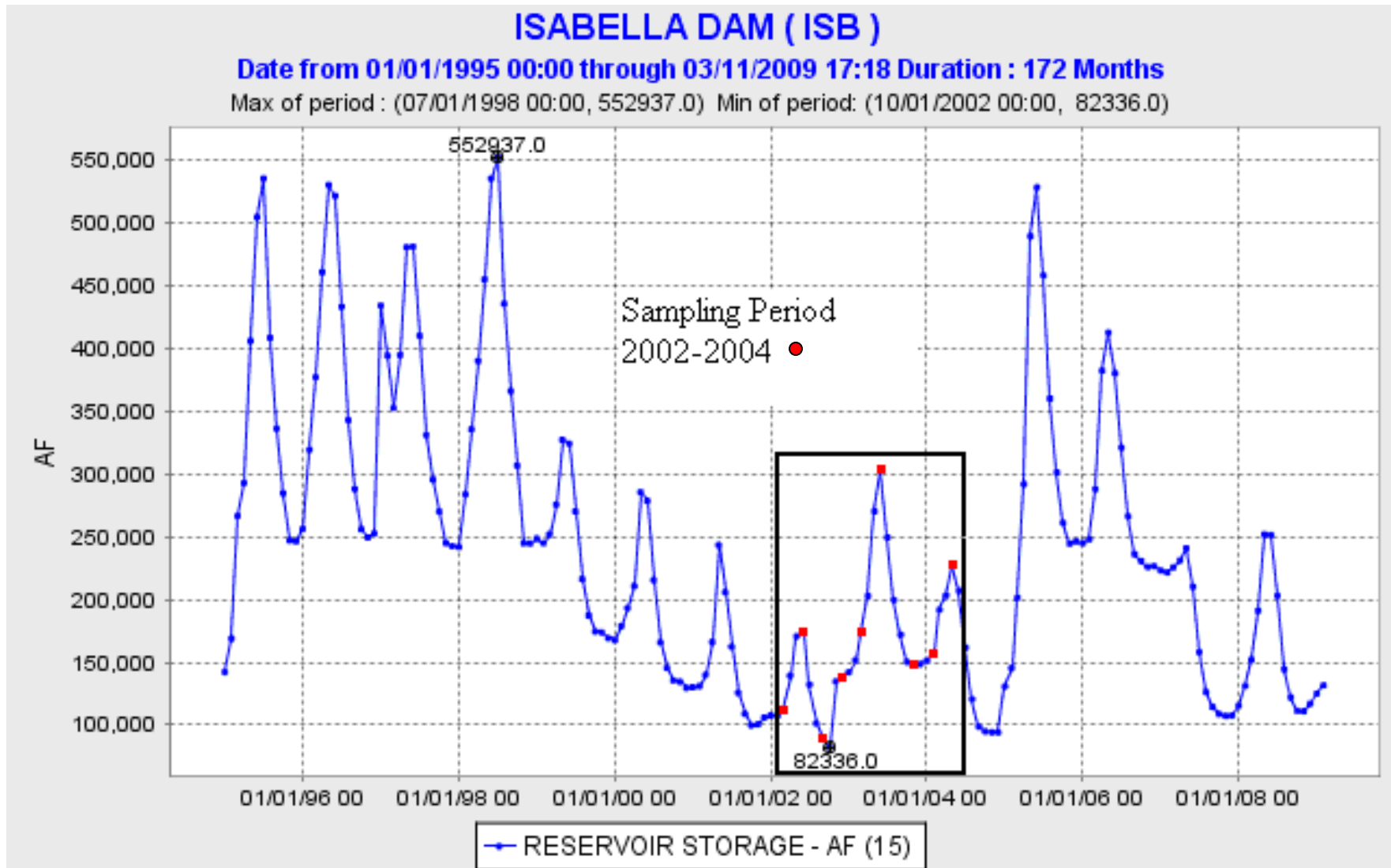
No apparent organic pollution



An aerial photograph of Lake Isabella, a large reservoir in a valley. The lake is dark blue and occupies the lower half of the frame. In the background, there are brown, rocky mountains under a clear blue sky. The foreground shows some rocky terrain with sparse vegetation.

Cumulative Effects Associated with Lake Isabella

15 Year Lake Levels and Sampling Period





And then on November 7, 2002
it rained.....a lot.

Fall Weather Summary

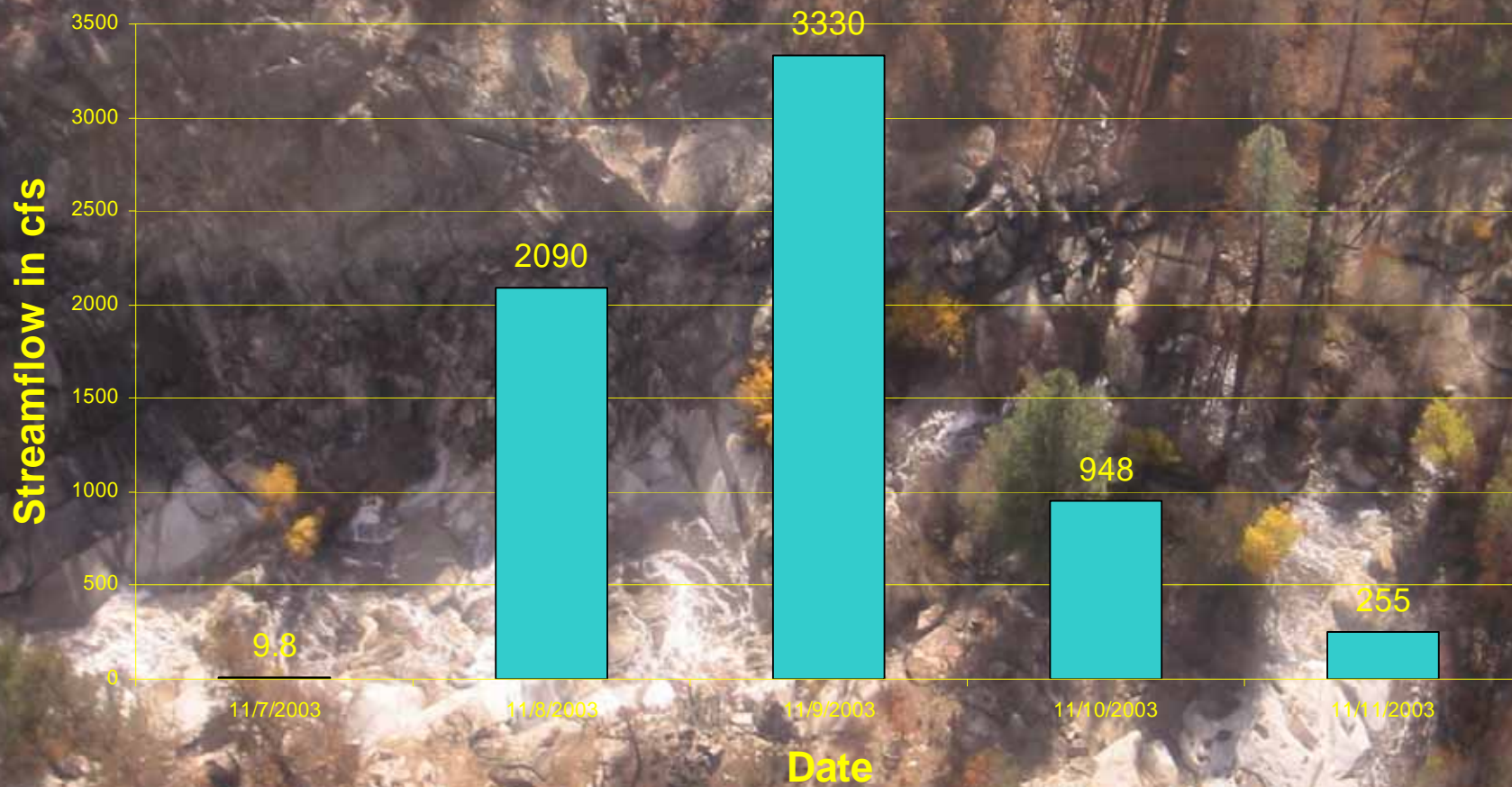
by

Gary Sanger

Climatology Focal Point

Heavy rains dropped 16.38 inches of water on Johnsondale. The recent forest fires had destroyed most of the vegetation that would have kept soils in place, and heavy runoff from the rains caused flooding in southeastern Tulare county. To the south, 6 inches of rain fell at Glennville, causing some flooding. Flooding also occurred in the foothills of the Southern Sierra Nevada, where some locations saw 10 inches of rain.

Daily Streamflow Kern River at Onyx



Deposition behind KR3 Dam Resulted in Flooding



Storm buries mountain areas, kills fish

Much-needed rain drenches thirsty valley; wildlife toll uncertain.

By **CHRISTINA VANCE**
and **MATT WEISER**

California staff writers
e-mail: cvance@thebakercal.com
mweiser@thebakercal.com

Revitalized autumn colors Monday were one of the only signs of the gray weekend rainstorm that pounded Kern County.

The Pacific rainstorm dumped much-needed water into the parched valley areas of the county, meteorologist Cindy Bean said from the National Weather Service in Hanford.

Bakersfield got 1.29 inches of rain, the first it'd gotten since mid-May, according to weather service records.

IN BUSINESS
Storms bring much-needed rain to farmers and ranchers. **A7**
A few leaks in roof can't dampen business at Valley Plaza. **A12**

But the storm overwhelmed the mountain areas with more than a dozen inches of rain in some areas, Bean said.

Mud and rock slides, rising water, power outages, car crashes and falling trees plagued the upper Kern mountains, sheriff's Sgt. J.C. Plank said from the Kernville substation.

The swelling river subsided before it forced evacuation of local residents, and most closed roads were reopened Monday afternoon, Plank said.

The human population got lucky, but the water-based wildlife took a pounding.

Hundreds of dead fish appeared at the Lake Isabella Dam on Monday, casualties of heavy erosion from the McNally Fire burn area and Kern River flows that peaked at 26,000 cubic feet per second Friday night.

"Even when I got up this morning, it smelled like a recent fire," Plank said. Observers said the river had mostly lost its black color, the result of ash washed off the burn area, but it remains dark brown with mud and silt.

Anglers fear a lot of fish deaths on the Kern, but they're withholding judgment until they can see more of the river. The main stem of the Kern is a stocked fishery, so those fish can be replenished.

"It's not good but it'll rebound on us," said John Strange, sporting goods manager at the James Store in Kernville. "I'm more concerned about

the golden trout and the Kern River rainbow (trout) up in the Golden Trout Wilderness."

Parts of the wilderness burned in the McNally Fire, and those watersheds are crucial to rare native fish. Because of their remote location and road closures caused by the storm, high-elevation creeks that feed the Kern River have not been inspected yet and their condition is unknown. Forest Service officials could not be reached for comment Monday.

"Your brown trout and your golden trout habitat that is not stocked might be disastrous," said Jack Dempsey, a retired Kernville fishing guide.

"There was just a lot of ash and silt and a lot of oxygen-deprived water, so that should equate to bad news for the fish. Theoretically it should have killed a bunch of fish."



Hundreds of dead fish were seen at the Lake Isabella Dam Monday, casualties of heavy erosion from McNally Fire burn area and Kern River flows.

COUNTY ROUNDUP

TEHACHAPI: City Council imposes ban on roving used-car sales

The city of Tehachapi, citing a circus-like atmosphere and runaway manpower costs, has banned itinerant used-car salesmen from pitching their tents in town.

The city has passed two measures that would block what it calls "transient outdoor businesses," aimed specifically at stopping the massive used auto sales that have become a common sight in town, taking up entire parking lots.

"We used to have maybe one a year," said Dave James, the city's development director. "Now there are maybe four or five. These temporary auto sales really are contrary to the kind of lifestyle we are trying to promote."

Besides the noise and traffic congestion caused by the sales, fire Chief Tim McLaughlin and sheriff's Sgt. John Fowler cited numerous code violations.

"Most of the violations are minor," McLaughlin said, "but the last three or four sales have cost us about 30 men-hours just to enforce them. It's become a manpower issue."

Fowler said he has received complaints of loud, amplified music, creating "a circus atmosphere."

"But it almost behaves them to violate our codes," Fowler said, "because if we issue a warrant, it's so minuscule it never even makes the system."

The City Council will hold a public hearing Monday on an ordinance to make the ban permanent. In the meantime, it passed an emergency measure last week to make the ban effective.

was managed by a staffer, who has left, "and besides, nobody else really wants to do it."

Algra will start from scratch, he said, designing an entirely new site. DataNet Solutions, meanwhile, will use its own server to keep the archives available over the Internet through the city's Web site. Those documents have been scanned by the city using software called LaserFiche and currently are kept on CD-ROMs.

RIDGECREST: Show to offer works from slate of area artists

The Sierra Art Guild will celebrate its 25th anniversary with its 51st art show and sale this weekend.

The show, held in the spring and fall, is the longest-running art show in Ridgecrest history. The fall exhibit showcases the talents of 16 local artists. Three core members — Nancy Hoyen, Carol Wilcher and Jeanne Greene — organize the show and invite new guest artists to show their work.

First-timer Jesse R. Baker will exhibit his eclectic paintings using a variety of mediums. Other exhibits include mother-daughter clothing, bead garlands, clay sculptures, stained glass, hand-painted furniture, clay rock art and a variety of hand-crafted jewelry.

The show will go from 10 a.m. until 5 p.m. Friday and Saturday, and from 10 a.m. until 3 p.m. Sunday at the Carriage Inn, 901 N. China Lake Blvd. Admission is free.

TEHACHAPI: Plan holds promise of

Blaze guts family's apartment in Delano

No injuries reported; contents of home a loss, say investigators, who suspect candle might be to blame.

A Delano apartment fire Monday displaced at least one family, county fire officials said.

The fire gutted an apartment close to the corner of Albany and First streets, but it left the exterior walls intact, county Battalion Chief Blake Cody said.

No injuries were reported. Smoke drifted from the blackened walls of the apartment Monday evening as a firefighter walked

through the charred hallway. Most of the contents of the apartment were lost even though the roof and interior can probably be repaired, Cody said.

"It's not good news for the residents here," he said. Firefighters are investigating whether a votive candle that may have been burning inside the building had anything to do with the fire, Cody said.

Investigators still aren't ruling out wiring or other causes as the cause. It took about 30 minutes for fire crews from Delano and McFarland to douse the 5:18 p.m. blaze before it spread to adjoining housing units, Cody said.

Most of the fire damage was contained to the first apartment, but there was some light damage to an adjoining apartment, he said.

Firefighters were unsure exactly how many people were displaced by the fire. The Kern Chapter of the American Red Cross will assist anyone displaced by the fire, spokeswoman Chris Phillips said.

A rash of fires in Kern County, coupled with one roof collapse, has displaced about 50 people in the last 10 days, Phillips said.

The Red Cross has been seeking donations to cope with the cost of giving food and clothing vouchers to the disaster victims.

Two people killed Monday in separate traffic wrecks

The Bakersfield Californian

Two people were killed Monday morning in separate wrecks south of Bakersfield, California Highway Patrol officers reported.

Carlos Sanchez, 56, of Bakersfield was killed in the first crash at 6:25 a.m. on South Union Avenue north of Boena Vista Road.

He was driving a 1984 Ford pickup about 70 to 80 mph when he came upon a southbound big-rig that was slowing to 10 to 15 mph to turn right onto a dirt road next to a cotton field, officers said.

Witnesses said Sanchez did not real-

ize he went out of control and struck a palm tree roadside, officers said. Perez was not injured.

In the second crash, an 84-year-old Lebec woman was killed when a northbound 1992 Dodge van drifted off the right shoulder on Highway 99 near Houghton Road, where it struck a dirt berm, went airborne and landed about 80 feet from the berm, officers said.

The driver of the van, Donald Trojahn, 85, of Lebec, was hospitalized after the 11:10 a.m. accident and remained in serious condition Monday afternoon at Kern Medical Center.

KILLEBREW: Court rules police used racial profiling when stopping vehicles

Continued from B1

Darbee testified that each of the young men knew there was a gun in two of the cars and each jointly possessed the guns for their mutual protection.

"Darbee's testimony was the only evidence offered by the People to establish the elements of the crime," the justices wrote.

"As such, it is the type of opinion that did nothing more than inform the jury how Darbee believed the case should be decided.

"It was an improper opinion on the ultimate issue and should have been excluded," the court ruled.

In addition, the court ruled it was

to conclude that he was in one of the two cars that were stopped nearby, the court ruled.

In the earlier reversals in the cases of two other defendants, Dontee Hester and Michael Hanley, the appellate court ruled police used racial profiling to stop the cars.

But Kern County prosecutors, in seeking an opinion on the case from the California Supreme Court, not only denied any racial profiling was used, but also contended police had a right to stop both defendants because they were on probation.

People on probation are subject to stops and searches at any time by the police, according to the appeal being

Cumulative Effects - Lake Isabella

- Lowest Lake Level in 15 years
- 150,000 acre McNally Fire NF Kern River, 2002
- 87,000 acre Manter Fire SF Kern River, 2000
- 11/8-10/2002 rainfall event associated with landslides and flooding
- Fish kills associated with sediment loading

Note: SWAMP sampling at Lake Isabella occurred 21 days following storm event during the height of fish decay.