

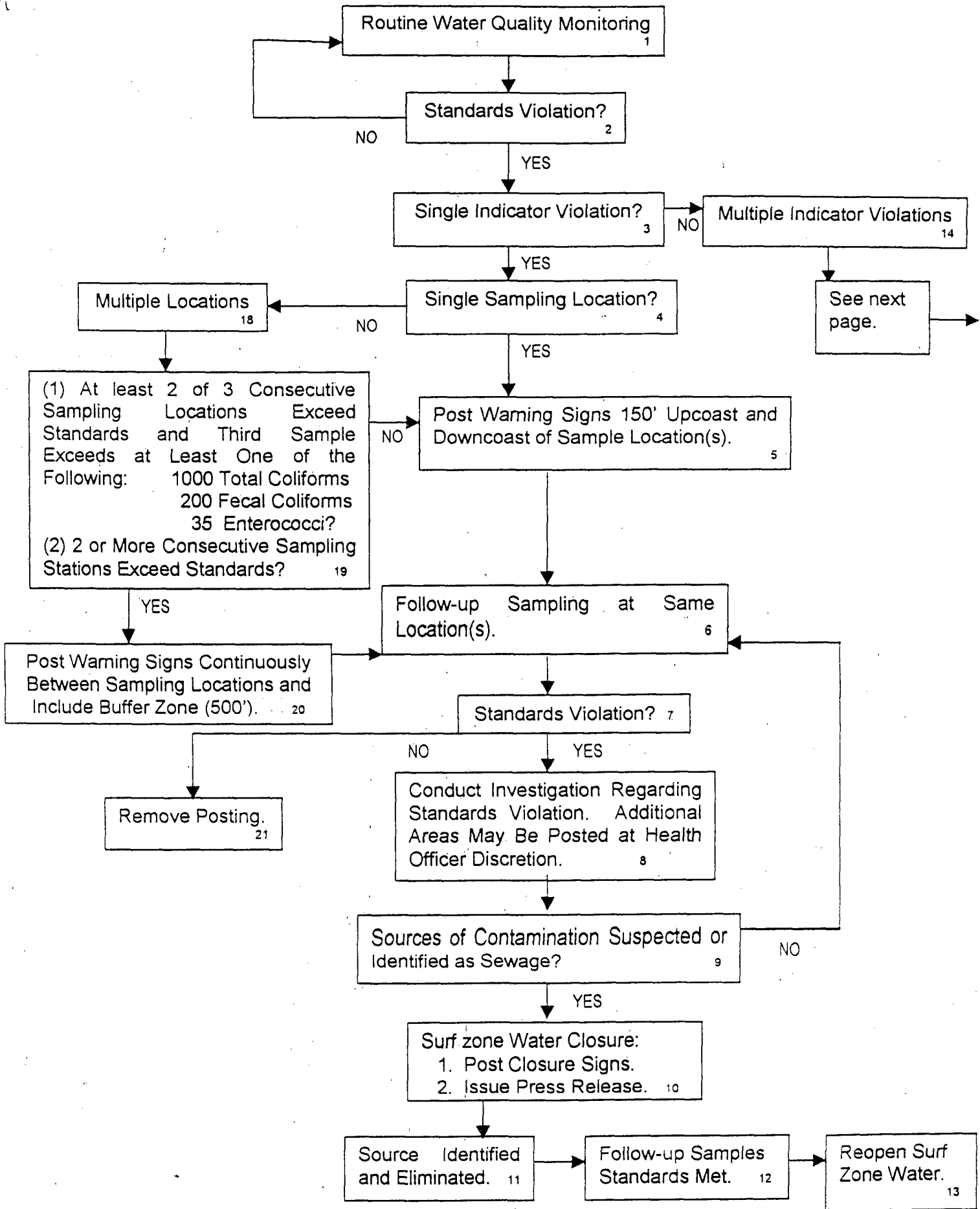
County of Orange Health Care Agency
Ocean Water Posting and Closure Guidelines
May 18, 2000

- Bacteriological water samples are collected 5 times per week at 10 stations along the Huntington Beach shoreline by Orange County Sanitation District from May 31st through September 6th (Fridays and Sundays are not sampled).
- The ocean water is tested for 3 indicator bacteria and State Ocean Water-Contact Sports Standards are applied to the sampling results.

<u>Indicator Bacteria</u>	<u>Single Sample Standards</u>	<u>30-Day Standards</u>
Total Coliform	10,000 bacteria	1000 bacteria
Fecal Coliform	400 bacteria	200 bacteria
Enterococcus	104 bacteria	35 bacteria
	Fecal:Total ratio	

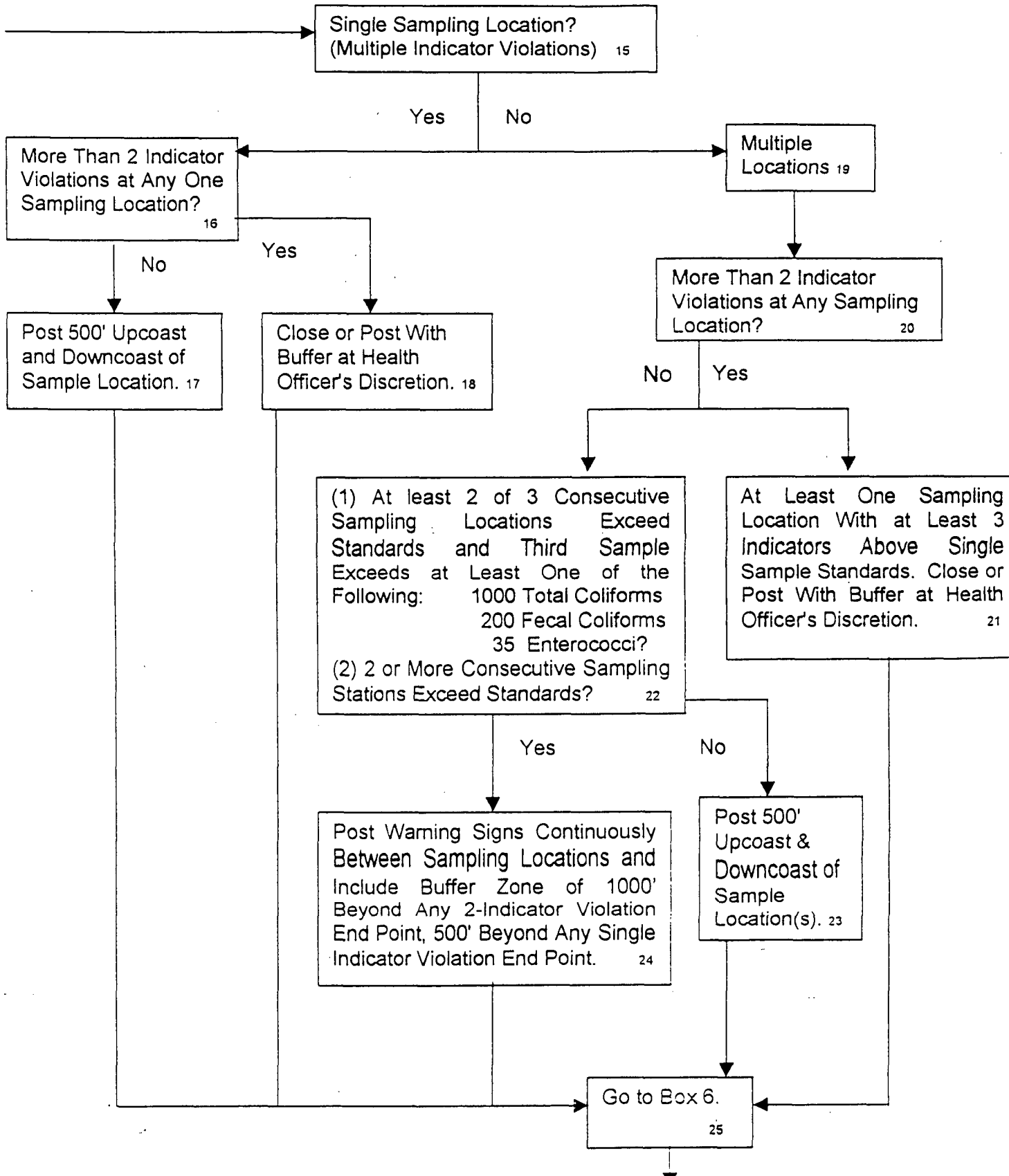
- Posting of warning signs if violation of AB411 standard occurs using a graduated approach:
 - Level 1: Single indicator violation at single location - post 150 feet upcoast and downcoast of the sampling location.
 - Level 2: (a) Two indicator violations at a single location - post 500 feet upcoast and downcoast of the sampling location. (b) Single indicator violation at multiple locations - post continuously between sampling locations with 500 foot buffer zone at each end point.
 - Level 3: Two indicator violations at multiple locations - post continuously between sampling locations with 1000 foot buffer zone at each end point.
 - Level 4: Three indicator violations at one or more locations - close or post with buffer zone at Health Officer's discretion.
- Areas unposted when sample results in compliance with single sample and 30-day standards.
- Ocean water closure if sewage source suspected or identified. Area opened when source eliminated and follow-up sample results meet standards.
- Health Officer discretion to increase sampling frequencies if violation of standards involves a large area or persists for days at a time.

Guidelines for the Response to Ocean Water Quality Standards Violations
 May 15, 2000



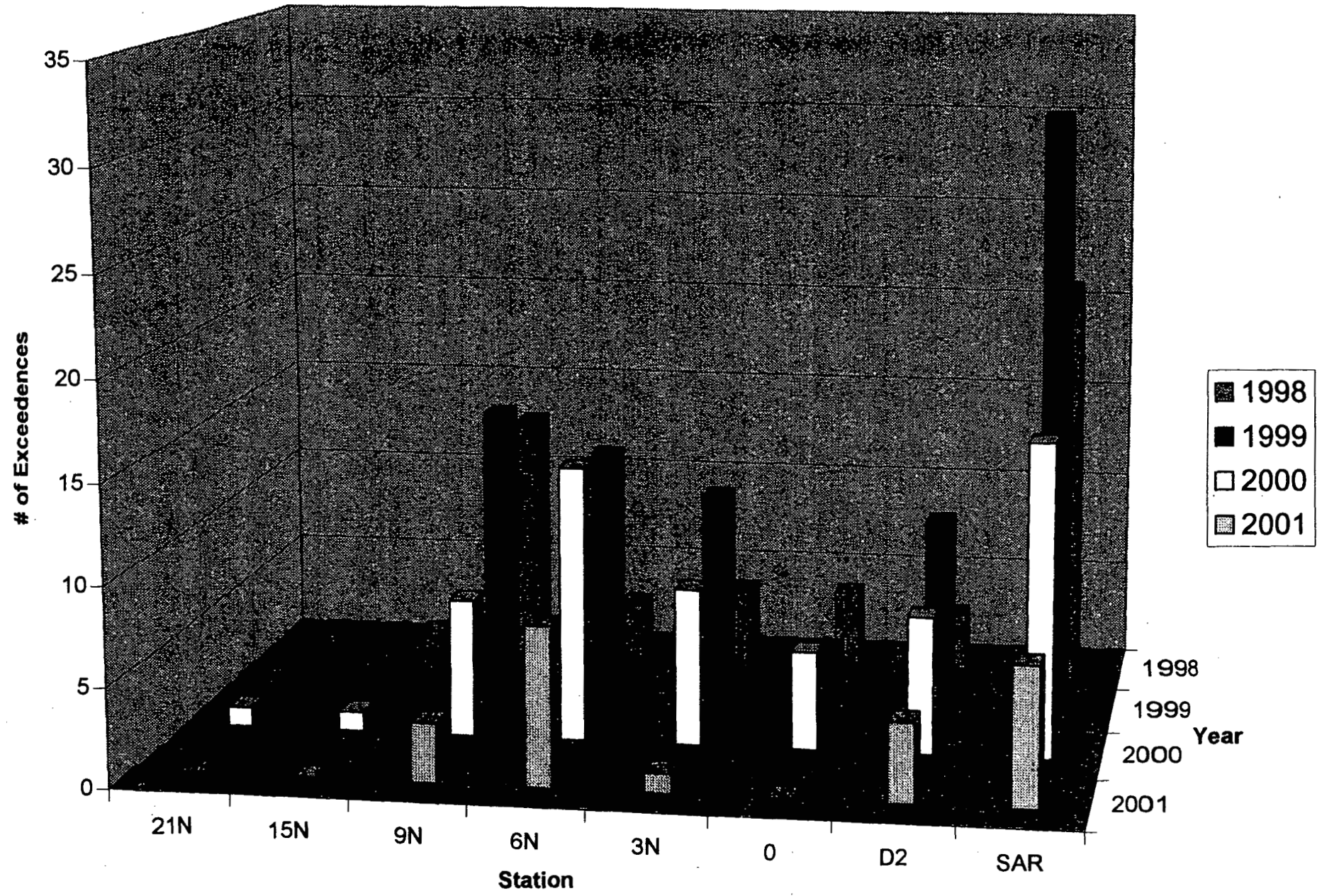
**County of Orange Health Care Agency
Guidelines for the Response to Ocean Water Quality Standards Violations**

Page 2

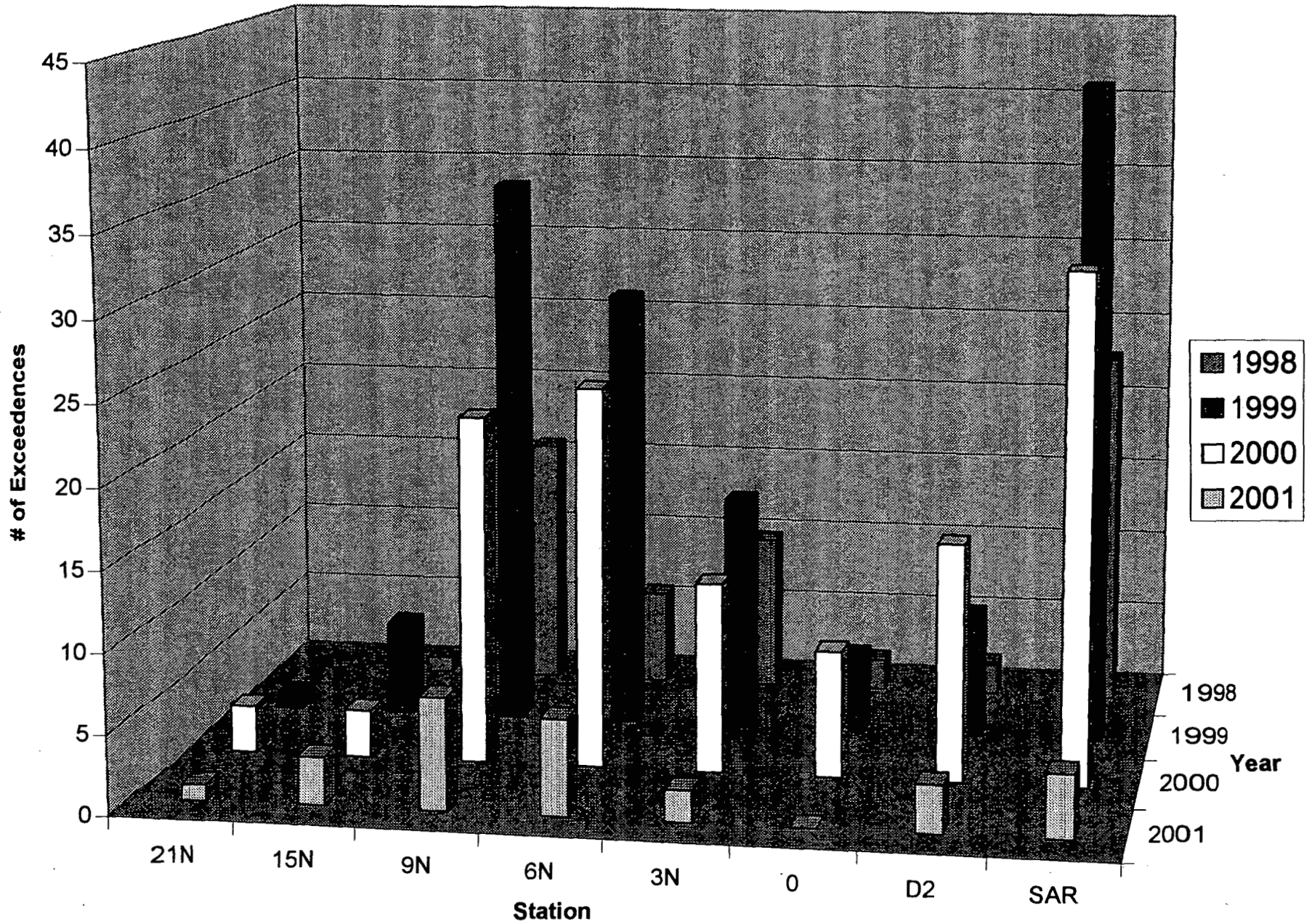


Buck Eye Cobby 8-23

Fecal Coliform Exceedences (>400) by Year



Enterococci Exceedences (>104) by Year



Thousands of feet north of SAR



TC (Total coliform)	OK	
FC (Fecal coliform)	V	Scenario 1: Box 17
Ent (Enterococcus)	V	
Posting	 (+/- 500')	

TC	OK	OK	
FC	V	V	Scenario 2: Box 22 (2), 24
Ent	V	V	
Posting	 (1000' buffer at endpoints)		

TC	OK	OK	
FC	V	V	Scenario 3: Box 22(1), 24
Ent	V	V	
Posting	 (-1000' from 6N) (+500' from 12N)	Box 22(1)	

TC	OK	OK	
FC	V	OK	Scenario 4: Box 23
Ent	V	V	
Posting	 (+/- 500')	 (+/- 150')	

Blank= no violations; OK=no single sample standard violation; V=violation of single sample standard