



Facility Inspection Report Photos – 9/14/06

1. Chollas Creek at Quince Street. Fencing does not prevent illegal dumping.



2. Chollas Creek at Quince Street. Evidence of illegal dumping.



3. Chollas Creek upstream of Market Street.



4. Chollas Creek upstream of Market Street.



5. Chollas Creek upstream of Market Street.



6. Chollas Creek downstream of Market Street.



7. Chollas Creek upstream of Imperial Ave. REC-2?



8. Chollas Creek upstream of Imperial Ave.



9. Chollas Creek downstream of Imperial Ave.



10. Chollas Creek downstream of National Ave.



11. Chollas Creek downstream of National Ave.



12. Chollas Creek downstream of National Ave.



13. Chollas Creek upstream of National Ave.



14. Chollas Creek at Harbor Drive.



15. Chollas Creek at Harbor Drive.



16. Chollas Creek at Harbor Drive.



17. Trash in NASSCO parking lot near Chollas Creek at Harbor Drive.



18. Trash adjacent to storm drain discharging directly to Chollas Creek near Euclid Ave./Altadena St.



19. Access to Chollas Creek near Euclid Ave./Altadena St.



20. Evidence of illegal dumping in Chollas Creek near Euclid Ave./Altadena St.



21. Tributary to Chollas Creek at Federal Blvd./Central Ave. Trash is at base of swale graded to drain Central Ave. into the creek.



22. Tributary to Chollas Creek at Federal Blvd./Central Ave.



23. Tributary to Chollas Creek at Federal Blvd./Central Ave.



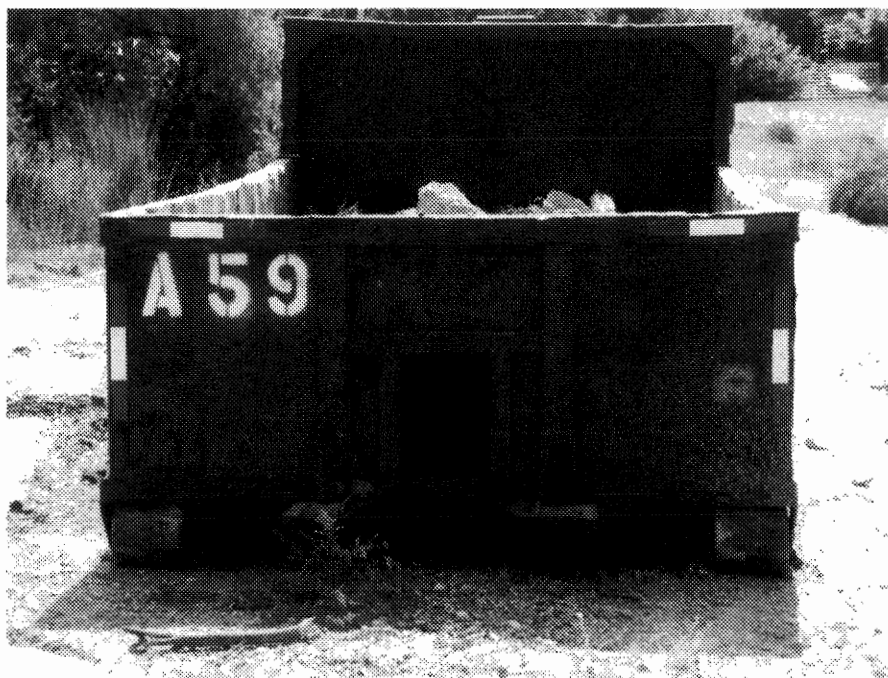
24. Illegal dumping of concrete waste in tributary to Chollas Creek at Federal Blvd./Central Ave.



25. Illegal dumping of concrete waste adjacent to tributary to Chollas Creek at Federal Blvd./Central Ave.



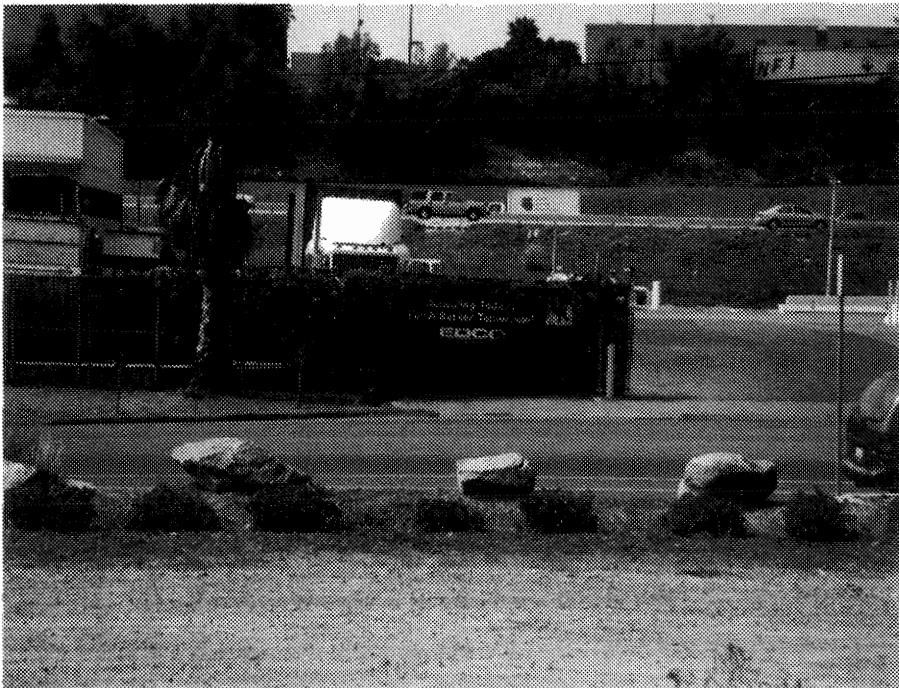
26. EDCO dumpster nearby illegal dumping of concrete waste.



27. EDCO dumpster nearby illegal dumping of concrete waste.



28. Concrete waste inside EDCO dumpster.



29. EDCO facilities across the street from the EDCO dumpster and illegal dumping of concrete waste.



30. Paleta Creek downstream of Osborn St.



31. Paleta Creek downstream of Osborn St.



32. Paleta Creek upstream of Osborn Street.



33. Paleta Creek upstream of Osborn Street.