



**Technical Memorandum:  
Delta Risk Management Strategy (DRMS) Phase 1**

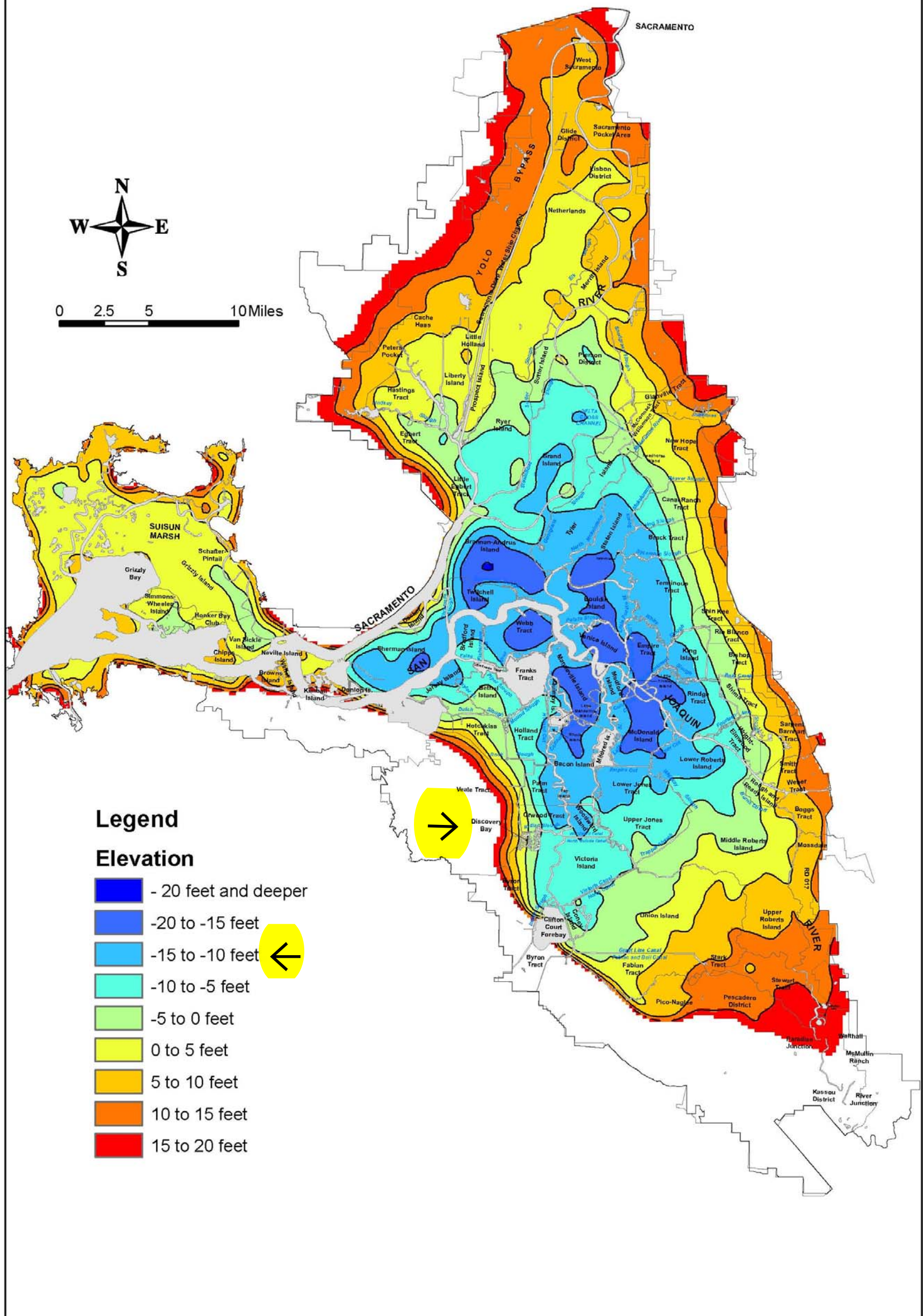
**Topical Area:  
Levee Vulnerability  
Final**

Prepared by:  
URS Corporation/Jack R. Benjamin & Associates, Inc.

Prepared for:  
California Department of Water Resources (DWR)

May 15, 2008

**DRAFT**



**Legend**

**Elevation**

- 20 feet and deeper
- 20 to -15 feet
- 15 to -10 feet ←
- 10 to -5 feet
- 5 to 0 feet
- 0 to 5 feet
- 5 to 10 feet
- 10 to 15 feet
- 15 to 20 feet

Delta Risk Management Strategy (DRMS) Levee Fragility		<b>Surface Elevation Map</b>	Figure 2-10
<b>URS</b>	Project No. 26815621		