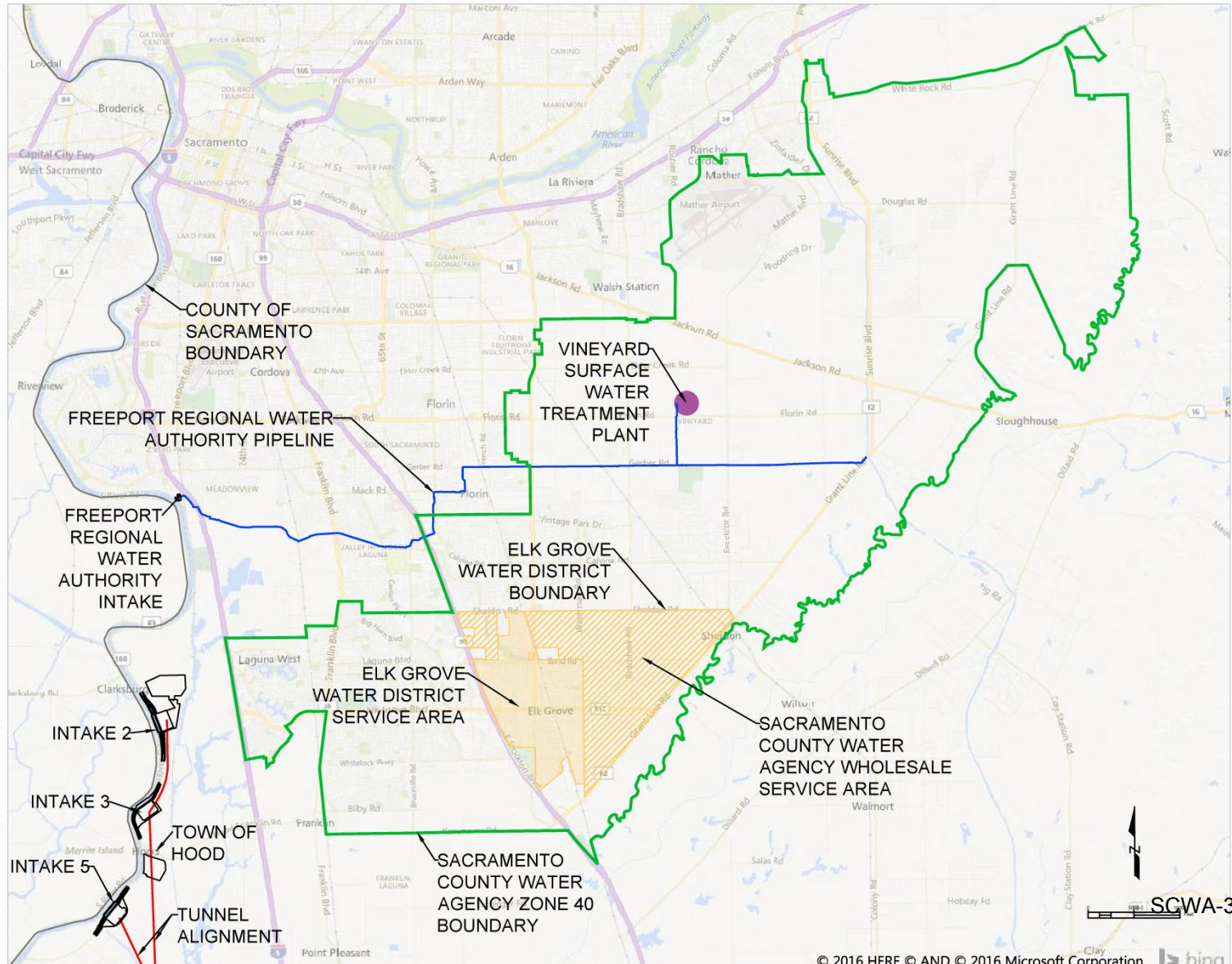


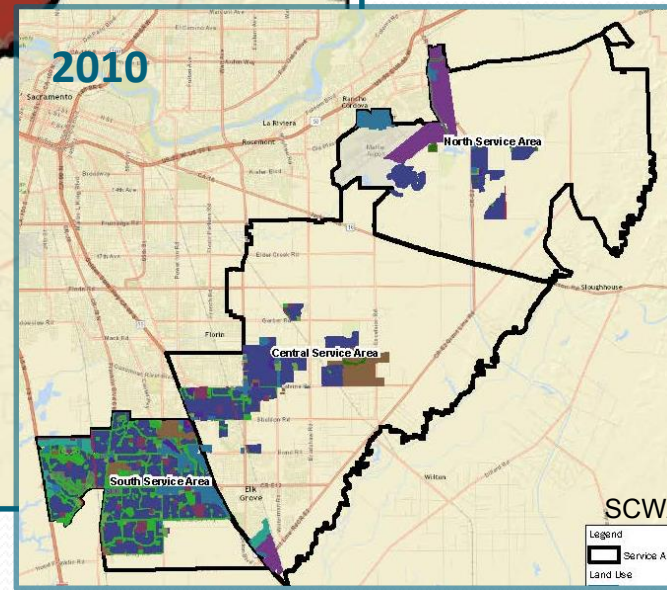
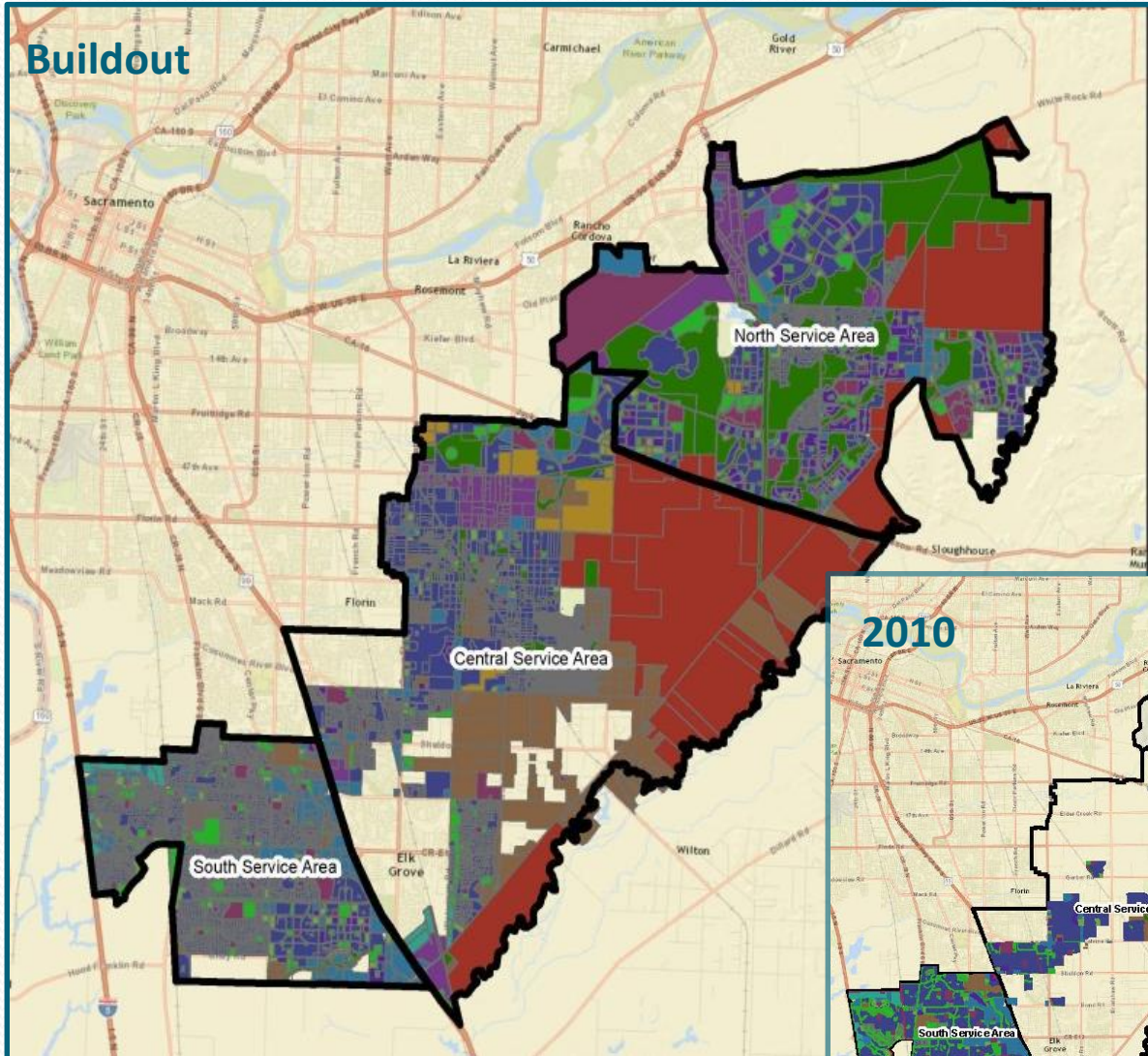
Sacramento County Water Agency Protest to the California WaterFix Change Petition Hearing Proceedings

Michael Peterson, Agency Engineer for the
Sacramento County Water Agency

SCWA Zone 40 Service Area



SCWA Zone 40 Development



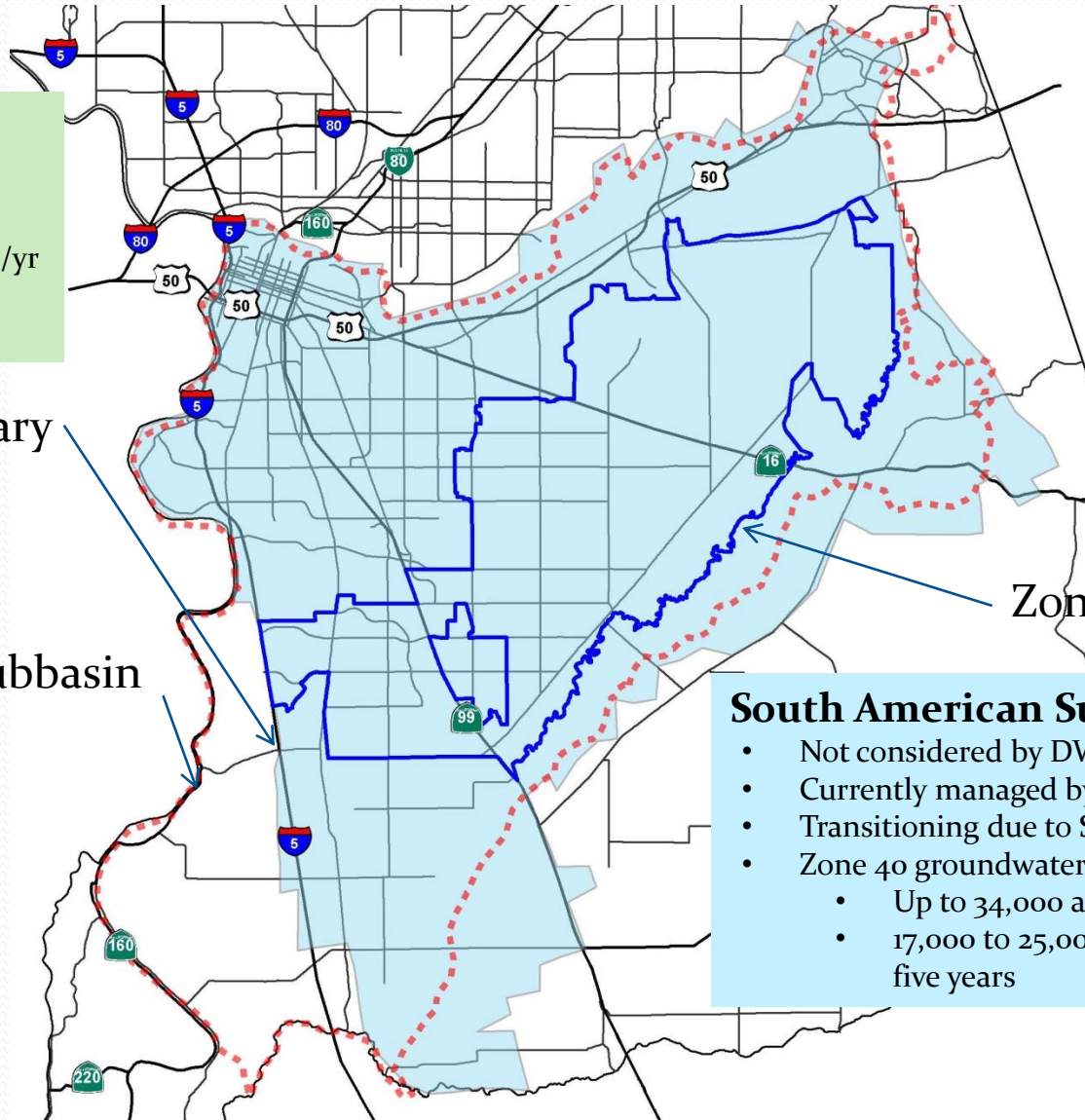
SCWA-34

Legend
Service Area
Land Use

SCWA Groundwater Management

Remediated Groundwater

- 2010 agreement with Aerojet for 8,900 ac-ft/yr
- Conveyed through Freeport/Vineyard



SCGA GMP Boundary

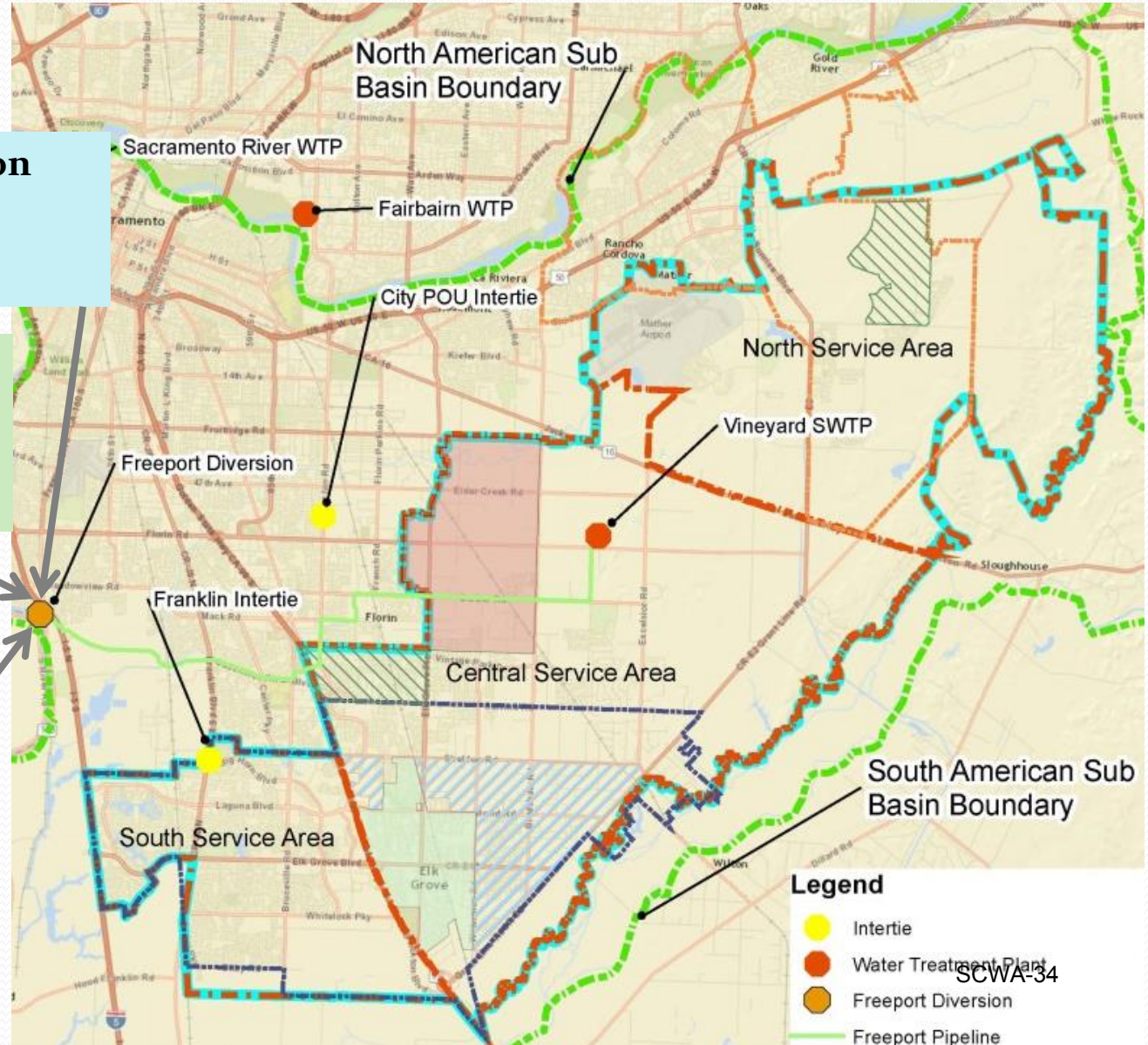
Zone 40 Boundary

South American Subbasin Boundary

South American Subbasin (5-21.65)

- Not considered by DWR to be in overdraft
- Currently managed by SCGA
- Transitioning due to SGMA requirements
- Zone 40 groundwater use
 - Up to 34,000 ac-ft/yr in 2009
 - 17,000 to 25,000 ac-ft/yr pumped last five years

Zone 40 Water Supplies



US Bureau of Reclamation Central Valley Project

- Fazio water and SMUD 1 and 2
- 45,000 ac-ft/yr

Appropriative water

- SWRCB Permit 21209
- 71,000 ac-ft/yr
- Priority date 1995
- Subject to Term 91

Other surface water supplies

- Water transfer purchases in dry years

SCWA-34

SCWA Conjunctive Use Program

- Maximizes surface water use in wet and average climate years
- Reserves groundwater use for dry years
- Supplements reduced surface water supplies
- Requires redundant water supply systems
- Investments in infrastructure for both surface and groundwater supplies

Injury to SCWA Water Supplies

- CVP Supplies – Contracts 6-07020-W1372 and 14-06-200-5198B-IR2
- Appropriative Surface Water Right – Permit 21209
- Appropriative Groundwater Right – South American Sub-basin
- FRWP Reverse Flow Occurrence and Remediated Groundwater (Agreement between Sacramento County, SCWA and Aerojet-General Corporation with Respect to Transfer of GET Water)
- SCWA Conjunctive Use Program