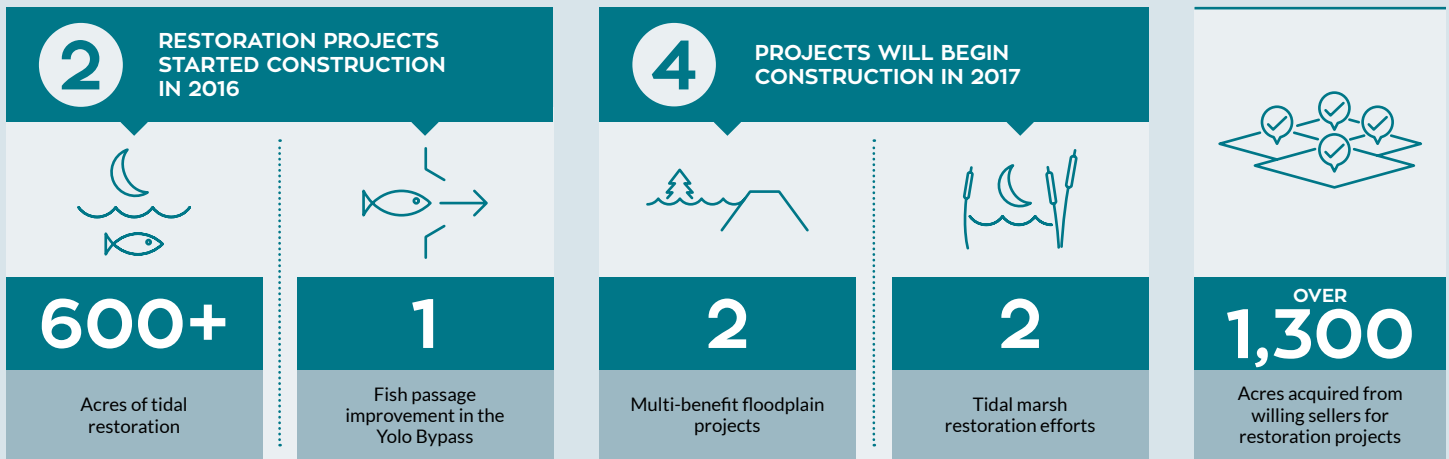


# CALIFORNIA ECORESTORE CONTINUES TO BREAK GROUND IN THE DELTA AND PLAN FOR FUTURE RESTORATION

After only two years in operation, California EcoRestore has made historic progress in advancing restoration opportunities in the Sacramento-San Joaquin Delta (Delta).

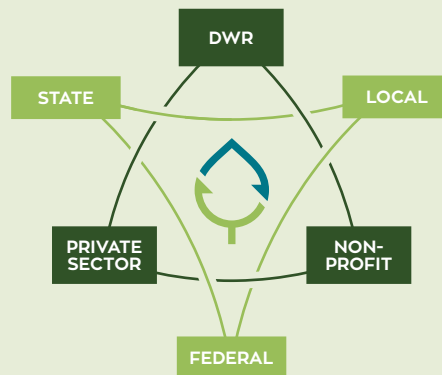
## ON THE GROUND



## CAPACITY AND PARTNERSHIP BUILDING

### 2 PROJECTS FUNDED THROUGH TIDAL WETLANDS RFP

A first-of-its-kind Request for Proposal (RFP) was developed by the California Department of Water Resources (DWR), to partner with private sector companies and non-profit groups to create tidal wetlands counting toward the EcoRestore tidal restoration goal of at least 9,000 acres



### INTERAGENCY COLLABORATION

Unprecedented interagency collaboration and coordination between all state, federal and local agencies involved in restoration project implementation - including focused discussions on permitting barriers facilitated through the Delta Plan Interagency Implementation Committee

## PROPOSITION 1 FUNDING

Over \$22 million in grant funding was awarded to projects benefiting restoration in the Delta through the voter-approved Proposition 1 Water Quality, Supply, and Infrastructure Improvement Act of 2014. These projects will help meet the EcoRestore goal of implementing at least 1,000 acres from proposition-funded restoration projects.

In 2016, the California Department of Fish and Wildlife (CDFW) awarded \$12 million to fund projects directly benefiting the Delta and helping meet on-the-ground objectives. In 2017, CDFW has allocated \$7 million to fund additional projects through the Delta Water Quality and Ecosystem Restoration Grant Program.

In 2016 and 2017, the Delta Conservancy awarded grants to twelve projects totaling \$10.3 million aimed at ecosystem restoration and water quality improvements.

## PROGRESSION OF ECORESTORE COMPONENTS

The continued progress and evolution of the various EcoRestore program components demonstrate the unique, diverse and important work currently underway to move this critical initiative forward.



### RESTORATION PROJECTS

Projects contributing to the long-term health of the Delta through restoration and related activities.



### ADAPTIVE MANAGEMENT

EcoRestore projects will be guided by a multi-agency developed comprehensive adaptive management approach founded in the best available science.



### PLANNING

Additional priority restoration projects will be identified through regional and locally-led planning facilitated by the Delta Conservancy. Long-term planning will be guided by the Delta Conservation Framework developed by CDFW working with federal, state and local agencies and stakeholders.



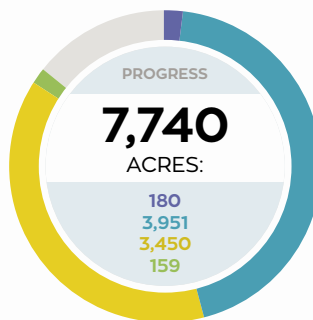
## RESTORATION PROJECTS

EcoRestore is focused on implementing a comprehensive suite of habitat restoration actions to support the long-term health of the Delta and its native fish and wildlife species. In order to achieve its ambitious restoration targets, EcoRestore is comprised of many projects at various stages of planning, permitting and construction. After 2 years in operation, EcoRestore projects have progressed at all stages of implementation, including two projects starting construction in the last year.

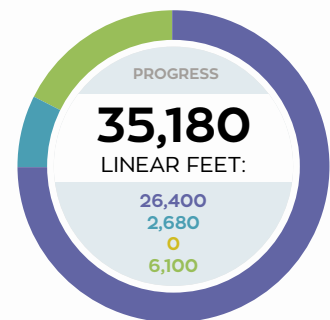
### FLOODPLAIN RESTORATION TARGET: 17,500 ACRES



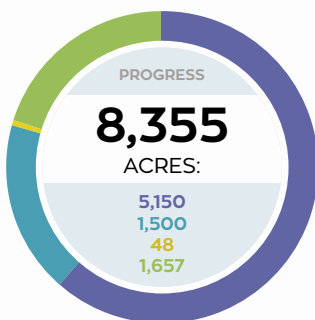
### TIDAL AND SUB-TIDAL TARGET: 9,000 ACRES



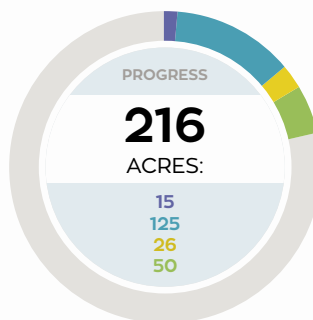
### SHADED RIVERINE AQUATIC



### MANAGED WETLANDS FOR SUBSIDENCE REVERSAL AND CARBON STORAGE TARGET: 3,500 ACRES



### UPLAND AND RIPARIAN FOREST TARGET: 1,000 ACRES



### FISH PASSAGE



### PROJECT PHASES

PLANNED	IN PERMITTING	UNDER CONSTRUCTION	COMPLETED
Sites owned or partnered with the State where planning and analysis is underway	Sites that have completed necessary planning to initiate permitting with State and Federal regulatory agencies	Sites with necessary permits and under construction	Sites with construction completed and transitioning to monitoring and maintenance





## ADAPTIVE MANAGEMENT

Adaptive management is a key EcoRestore component, and several significant advances occurred in the last year.

- ▶ EcoRestore and the Delta Science Program convened an Interagency Adaptive Management Integration Team (IAMIT) to develop a Delta ecosystem restoration Adaptive Management Program (Program).
- ▶ The IAMIT is comprised of agency and stakeholder scientists and technical management staff. The IAMIT works in conjunction with the Steering Committee that was formed to provide policy guidance for the development of the Program.
- ▶ The scope of the Program is to initially support current EcoRestore projects, but the overarching intent is to create a strong foundation for a long-term program that would support future restoration in the Delta and Suisun Marsh.

### WHITE PAPER

The IAMIT developed a draft White Paper that provides recommendation for developing an integrated and financially-supported Adaptive Management Program for habitat restoration in the Delta and Suisun Marsh.

### COORDINATION

A coordinator role was established to provide leadership in working with the Steering Committee and IAMIT to implement this Program.



## PLANNING

Several EcoRestore planning efforts are currently underway, including:

### DELTA CONSERVATION FRAMEWORK

CDFW is working with federal, state and local agencies, and a diverse group of stakeholders to develop a high-level conservation framework for the Delta, Yolo Bypass and Suisun Marsh. The Delta Conservation Framework (Framework) will serve as the long-term continuation of the EcoRestore initiative, and will be completed in 2017. The Framework will help guide Delta conservation efforts to 2050, including long-term implementation of strategies and related actions for Delta conservation and stakeholder integration and the protection, enhancement, restoration, and adaptive management of Delta ecosystems and their ecological functions to benefit human and natural communities.

Over the last year, CDFW convened a series of six public workshops to gather input and feedback from the Delta community to help inform the development of the central elements of the Framework including the vision, goals and strategies. CDFW is currently working on a draft of the Framework for public review.

**The Delta Conservation Framework will serve as the long-term continuation of the EcoRestore initiative to help guide Delta conservation efforts to 2050.**

### REGIONAL RESTORATION PLANNING

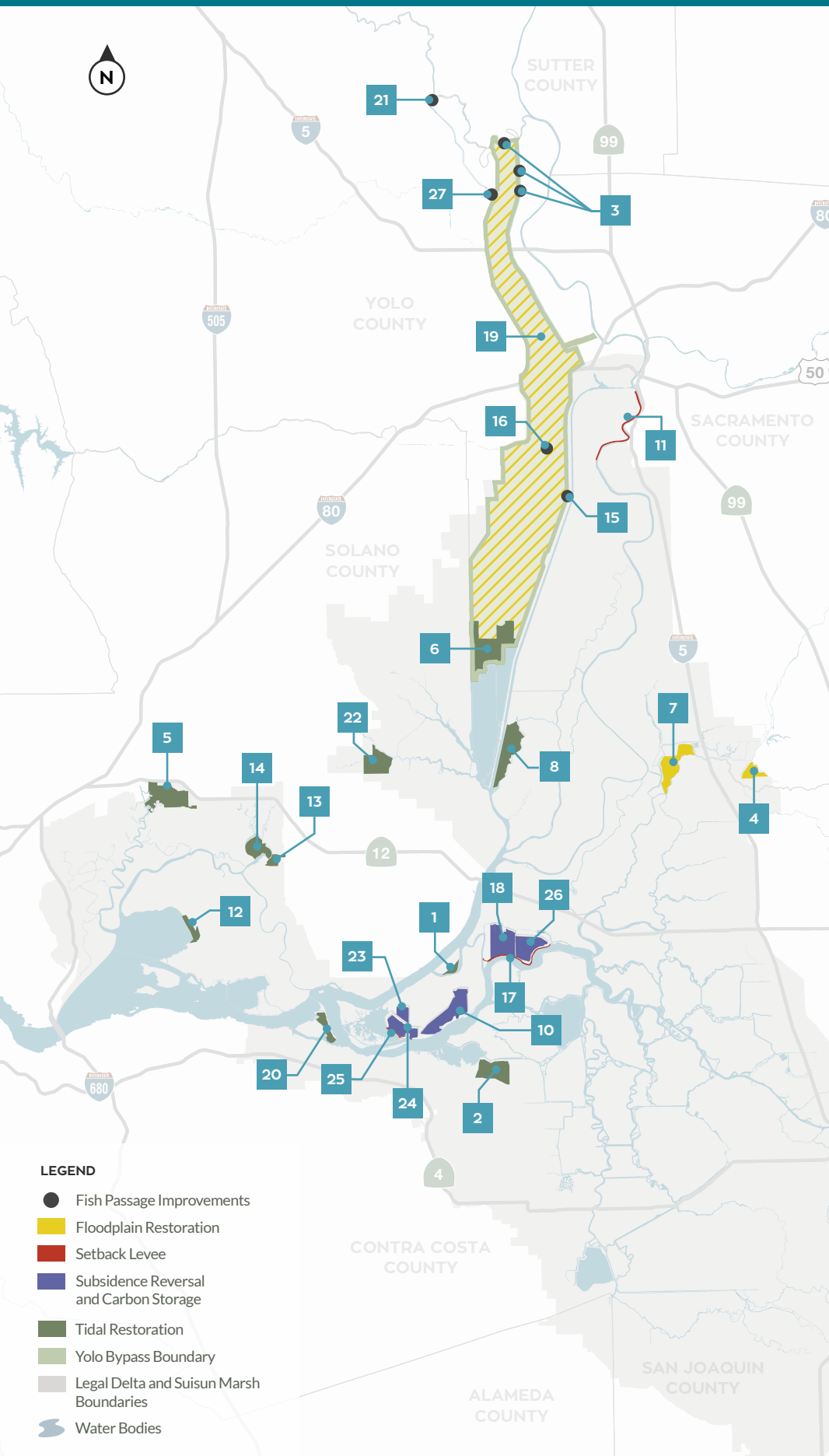
Additional priority restoration projects will be identified through regional and locally-led planning processes facilitated by the Delta Conservancy. The Delta Conservancy anticipates doing plans for the Cache Slough, West Delta, Cosumnes, and South Delta. Planning for the Suisun Marsh region is already complete and a process for integrated planning in the Yolo Bypass is underway.

**Priority restoration projects will be identified through regional and locally-led planning processes facilitated by the Delta Conservancy.**

In the last year, the Delta Conservancy convened the Cache Slough Restoration Planning group to develop a regional specific plan with stakeholders including state agencies, counties, local water agencies, resource conservation districts, reclamation districts, non-profit organizations, and academic universities.



CALIFORNIA ECO RESTORE PROJECTS



**2017 / 2018**  
 (Target Construction Start Dates)

1	Decker Island
2	Dutch Slough
3	Fremont Weir Adult Fish Passage Modification
4	Grizzly Slough
5	Hill Slough
6	Lower Yolo Ranch
7	McCormack Williamson Tract
8	Prospect Island
9	Fish Restoration Program RFP Projects (not on map)
10	Sherman Island: Whale's Belly Wetland
11	Southport Levee Improvement
12	Tule Red (2016)

**2019+**  
 (Target Construction Start Dates)

13	Arnold Slough
14	Bradmoor Island
15	Lisbon Weir
16	Lower Putah Creek Realignment
17	Twitchell Island: Levee
18	Twitchell Island: West End
19	Yolo Bypass Floodplain Restoration
20	Winter Island

**COMPLETED**  
 (Construction Completed)

21	Knights Landing Outfall Gate
22	Lindsey Slough
23	Sherman Island: Mayberry Farms
24	Sherman Island: Whale's Mouth
25	Sherman Island: Mayberry Slough
26	Twitchell Island: East End
27	Wallace Weir Fish Rescue Facility

