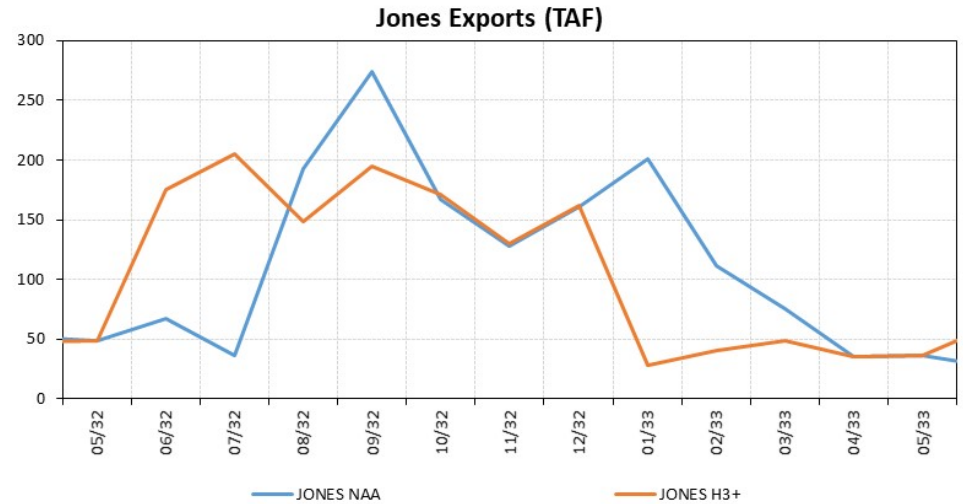
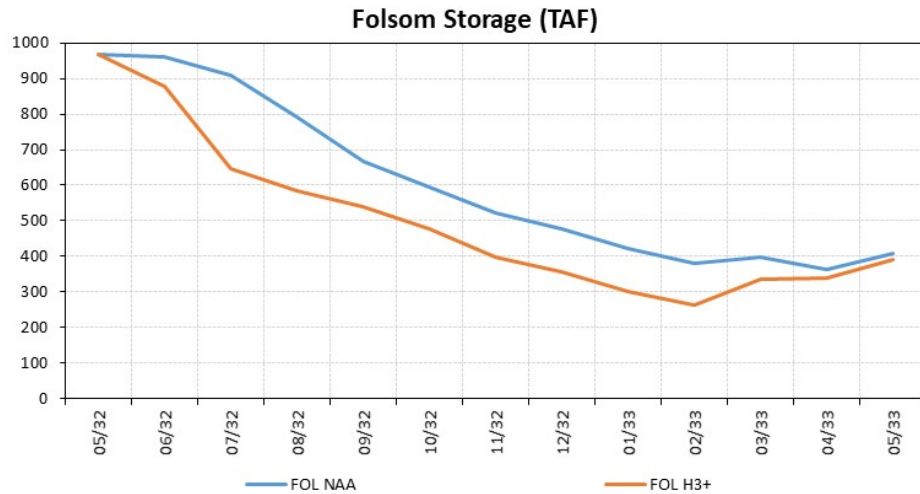


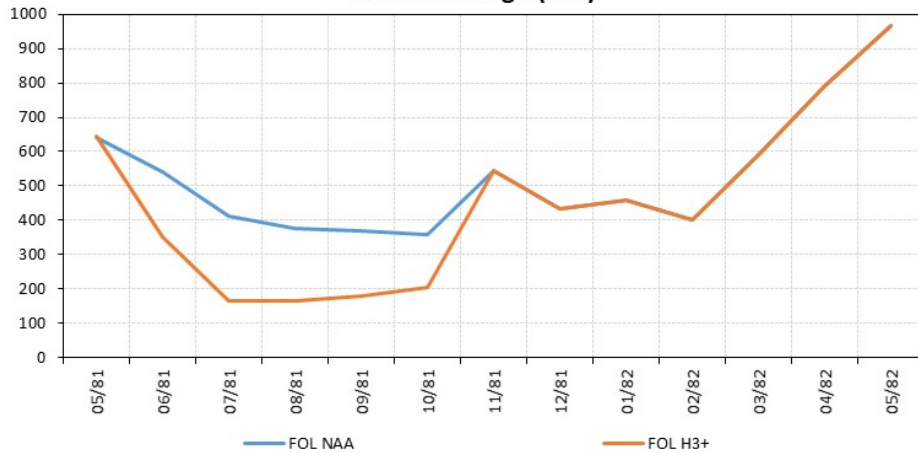
1932 NAA vs. CWF H3+



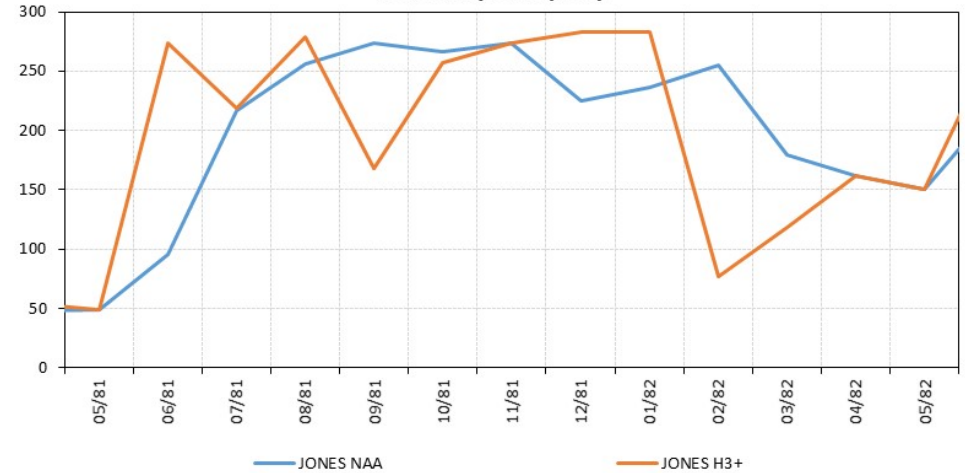
					Jones Exports		
	Folsom	Shasta	Trinity	CVP NOD	NAA	CWF H3+	Difference
5/31/1932	0	14	0	14	49	49	0
6/30/1932	-82	1	0	-82	68	176	108
7/31/1932	-265	8	3	-254	37	205	168
8/31/1932	-207	9	3	-195	192	148	-44
9/30/1932	-128	8	3	-116	274	195	-79
10/31/1932	-120	8	3	-108	168	171	3
11/30/1932	-122	8	3	-110	128	130	2
12/31/1932	-122	8	3	-110	161	162	1
1/31/1933	-122	8	3	-110	201	28	-173
2/28/1933	-119	8	3	-108	111	40	-71
3/31/1933	-64	-31	3	-92	76	49	-27
4/30/1933	-24	-75	3	-95	36	36	0
5/31/1933	-18	-88	3	-103	37	37	0

1981 NAA vs. CWF H3+

Folsom Storage (TAF)



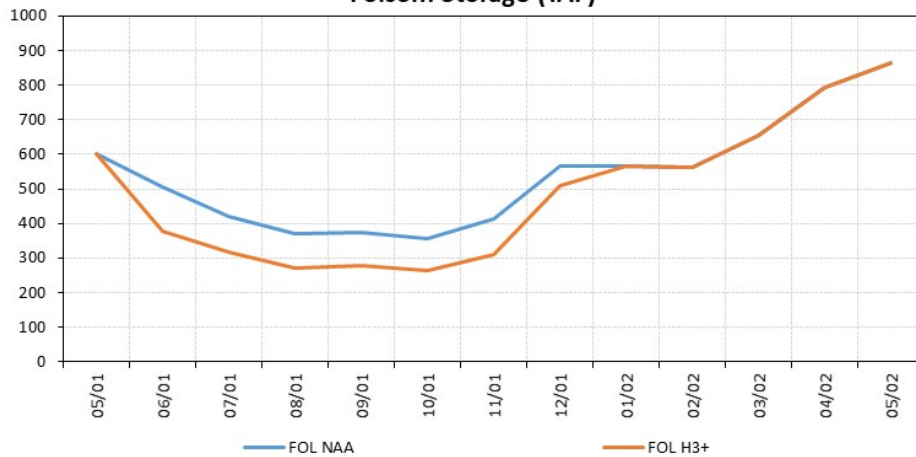
Jones Exports (TAF)



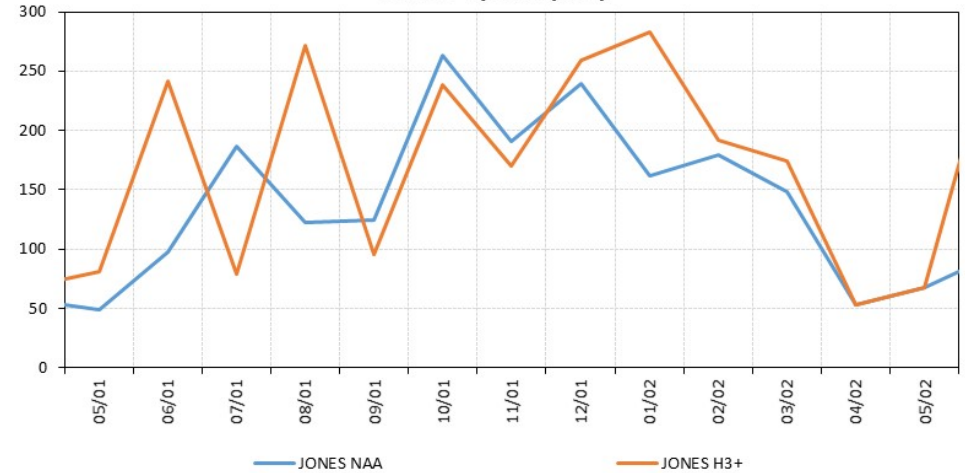
	Folsom	Shasta	Trinity	CVP NOD	Jones Exports		
					NAA	CWF H3+	Difference
5/31/1981	5	205	1	211	49	49	0
6/30/1981	-190	204	1	15	96	274	178
7/31/1981	-245	251	-47	-41	217	219	2
8/31/1981	-212	187	18	-7	256	279	23
9/30/1981	-190	276	18	104	274	168	-106
10/31/1981	-153	276	18	141	266	257	-9
11/30/1981	0	3	24	27	274	274	0
12/31/1981	0	0	24	24	225	283	58
1/31/1982	0	0	24	24	236	283	46
2/28/1982	0	0	0	0	255	77	-178
3/31/1982	0	0	0	0	179	118	-61
4/30/1982	0	0	0	0	162	162	0
5/31/1982	0	0	0	0	151	151	0

2001 NAA vs. CWF H3+

Folsom Storage (TAF)



Jones Exports (TAF)



	Folsom	Shasta	Trinity	CVP NOD	Jones Exports		
					NAA	CWF H3+	Difference
5/31/2001	2	335	77	414	49	81	32
6/30/2001	-129	166	218	255	98	242	144
7/31/2001	-101	220	217	336	187	79	-107
8/31/2001	-99	154	165	220	123	271	148
9/30/2001	-94	177	164	247	124	96	-29
10/31/2001	-94	192	144	241	263	238	-25
11/30/2001	-102	215	120	234	190	170	-20
12/31/2001	-59	0	120	61	240	259	19
1/31/2002	0	0	120	120	162	283	121
2/28/2002	0	0	114	114	179	192	13
3/31/2002	0	5	109	114	148	175	26
4/30/2002	0	-30	109	79	53	53	0
5/31/2002	-2	-68	108	39	68	68	0