

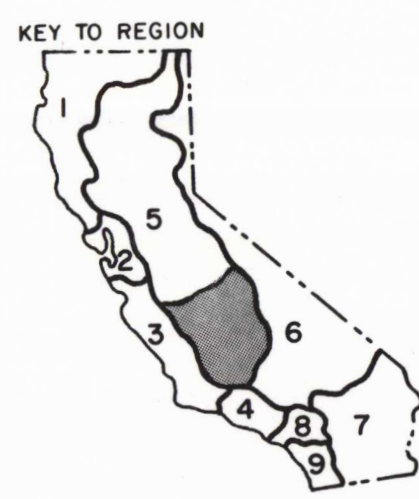
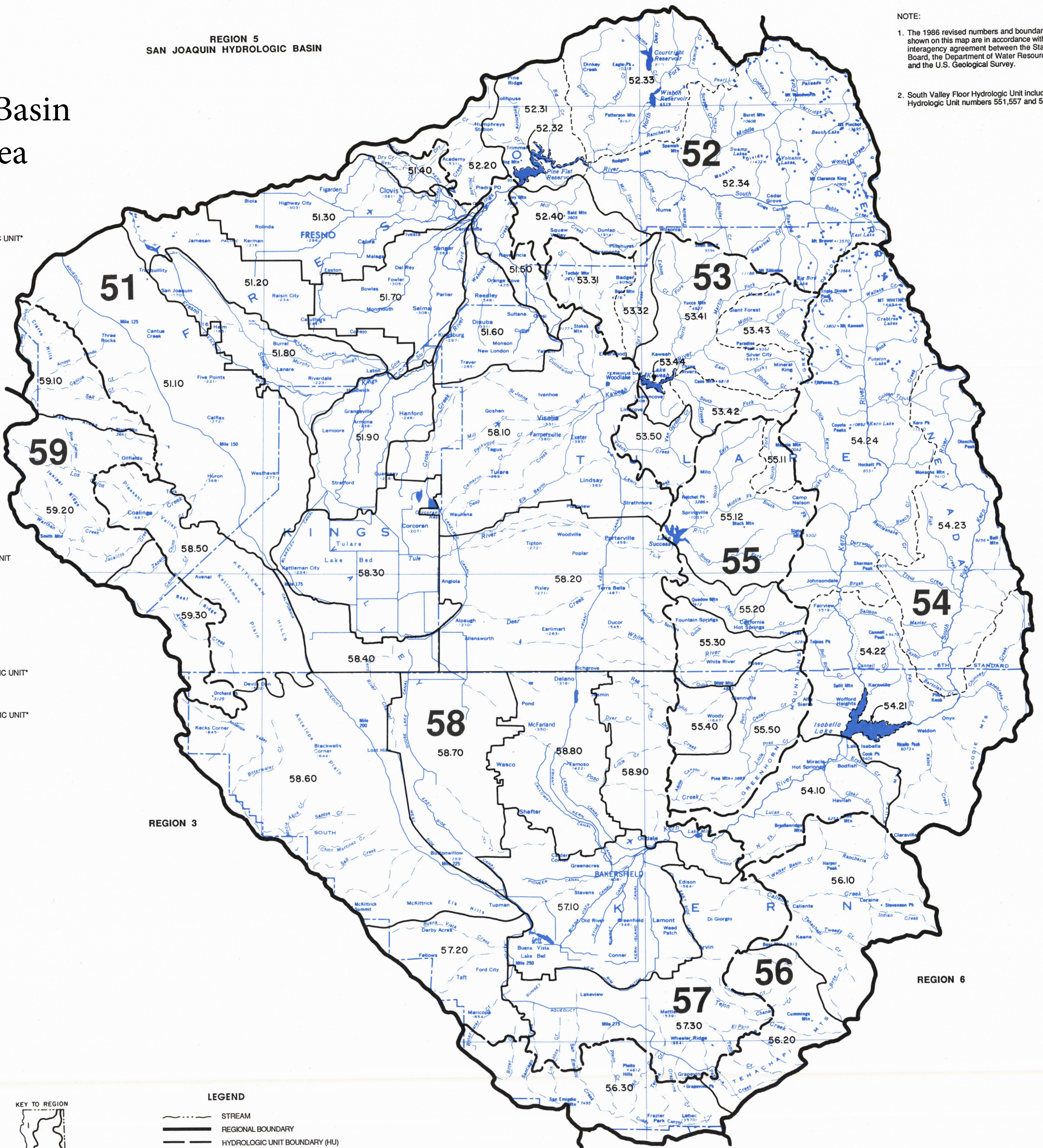
Figure 2-1: Tulare Lake Hydrologic Basin Planning Area

REGION 5
SAN JOAQUIN HYDROLOGIC BASIN

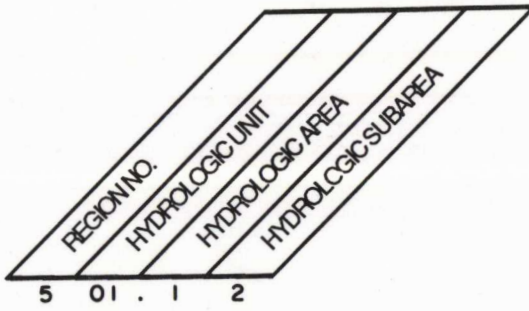
NOTE:
1. The 1986 revised numbers and boundaries shown on this map are in accordance with an interagency agreement between the State Board, the Department of Water Resources and the U.S. Geological Survey.
2. South Valley Floor Hydrologic Unit includes Hydrologic Unit numbers 551, 557 and 558.

- REGION 5 INDEX
TULARE LAKE HYDROLOGIC BASIN**
- 551.00 SOUTH VALLEY FLOOR HYDROLOGIC UNIT*
 - 551.10 Westlands HA
 - 551.20 Raisin HA
 - 551.30 Fresno HA
 - 551.40 Academy HA
 - 551.50 Orange Cove HA
 - 551.60 Alta HA
 - 551.70 Consolidated HA
 - 551.80 Lower Kings River HA
 - 551.90 Hanford-Lemoore HA
 - 552.00 KINGS RIVER HYDROLOGIC UNIT
 - 552.20 Humphreys Station HA
 - 552.30 Upper Kings HA
 - 52.31 Sycamore Creek HSA
 - 52.32 Pine Flat Reservoir HSA
 - 52.33 North Fork Kings HSA
 - 52.34 South Fork Kings HSA
 - 552.40 Dunlap HA
 - 553.00 KAWEAH RIVER HYDROLOGIC UNIT
 - 553.30 Tucker Mountain HA
 - 53.31 Sand Creek HSA
 - 53.32 Dry Kaweah HSA
 - 553.40 Upper Kaweah HA
 - 53.41 North Fork Kaweah HSA
 - 53.42 South Fork Kaweah HSA
 - 53.43 Middle Fork Kaweah HSA
 - 53.44 Lake Kaweah HSA
 - 553.50 Yokohi Creek HA
 - 554.00 KERN RIVER HYDROLOGIC UNIT
 - 554.10 Middle Kern HA
 - 554.20 Upper Kern HA
 - 54.21 Isabella Reservoir HSA
 - 54.22 Kernville HSA
 - 54.23 South Fork Kern HSA
 - 54.24 North Fork Kern HSA
 - 555.00 SOUTHERN SIERRA HYDROLOGIC UNIT
 - 555.10 Tule River HA
 - 55.11 North Fork Tule HSA
 - 55.12 Springville HSA
 - 555.20 California Hot Springs HA
 - 555.30 White River HA
 - 555.40 Five Dog Creek HA
 - 555.50 Poso Creek HA
 - 556.00 GRAPEVINE HYDROLOGIC UNIT
 - 556.10 Tehachapi Creek HA
 - 556.20 Tejon Creek HA
 - 556.30 San Emigdio HA
 - 557.00 SOUTH VALLEY FLOOR HYDROLOGIC UNIT*
 - 557.10 Kern Delta HA
 - 557.20 Tatt HA
 - 557.30 Arvin-Wheeler Ridge HA
 - 558.00 SOUTH VALLEY FLOOR HYDROLOGIC UNIT*
 - 558.10 Kaweah Delta HA
 - 558.20 Tule Delta HA
 - 558.30 Lake Sump HA
 - 558.40 South Tulare Lake HA
 - 558.50 Kettleman HA
 - 558.60 Antelope Plain HA
 - 558.70 Semitropic HA
 - 558.80 North Kern HA
 - 558.90 Kern Uplands HA
 - 559.00 COAST RANGE HYDROLOGIC UNIT
 - 559.10 Clervo Hills HA
 - 559.20 Juniper Ridge HA
 - 559.30 Reef Ridge HA

* South Valley Floor Hydrologic Unit includes Hydrologic Unit numbers 551, 557 and 558 due to the large number of Hydrologic Areas contained in this unit.



- LEGEND**
- STREAM
 - REGIONAL BOUNDARY
 - HYDROLOGIC UNIT BOUNDARY (HU)
 - HYDROLOGIC AREA BOUNDARY (HA)
 - HYDROLOGIC SUBAREA BOUNDARY (SA)
- 5** HYDROLOGIC UNIT NUMBER



April 1973
Revised: July 1976
Revised: August 1986
State Water Resources Control Board
Surveillance and Monitoring Section
T.E. Lavenda, P.E. T.C. Lavenda

State of California
REGIONAL WATER QUALITY CONTROL BOARD
Central Valley Region (5)
TULARE LAKE HYDROLOGIC BASIN PLANNING AREA (TL)

Scale in miles
0 8 16 24 32
Scale 1:500,000