

APPENDIX A

Figures

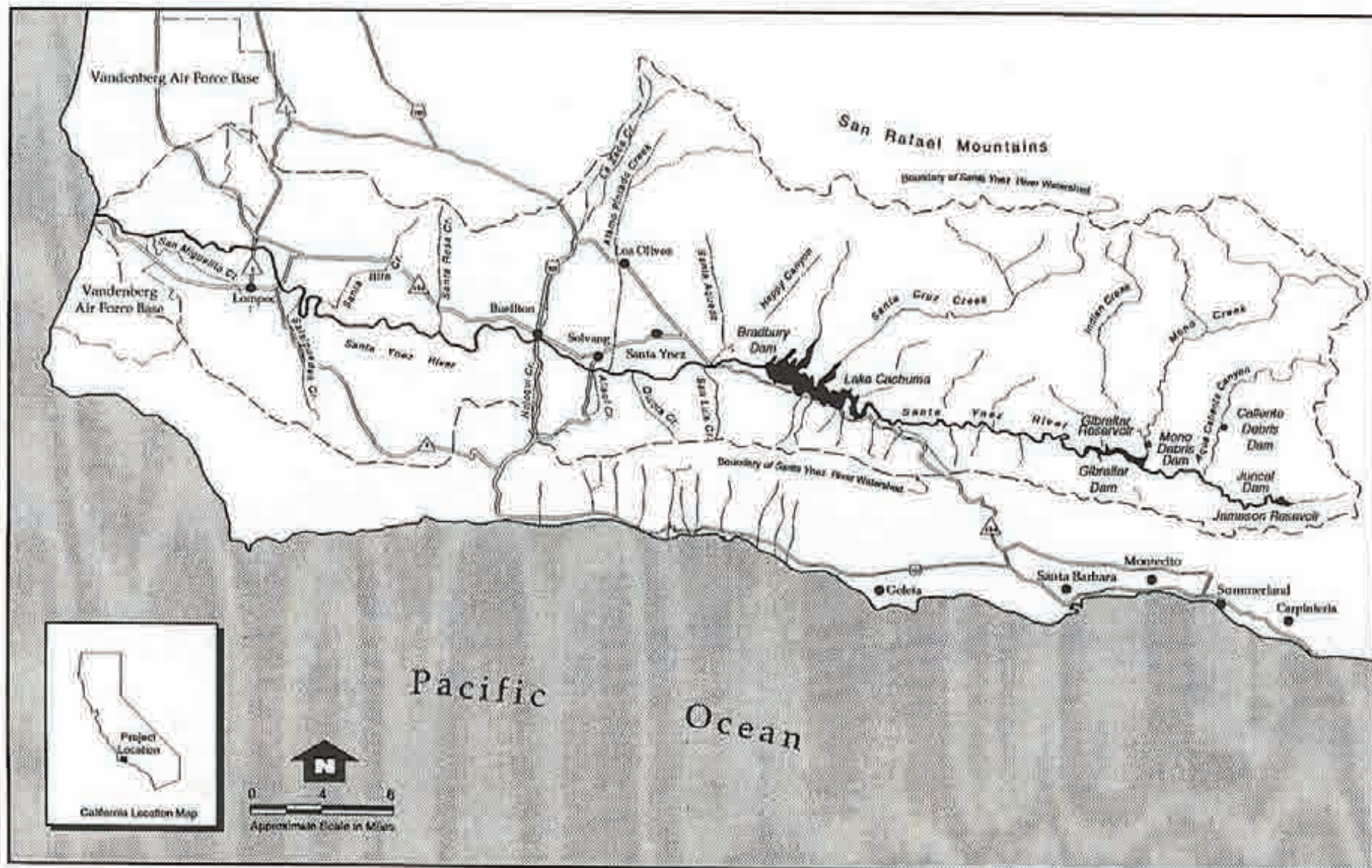


Figure 1-1: Santa Ynez River Watershed

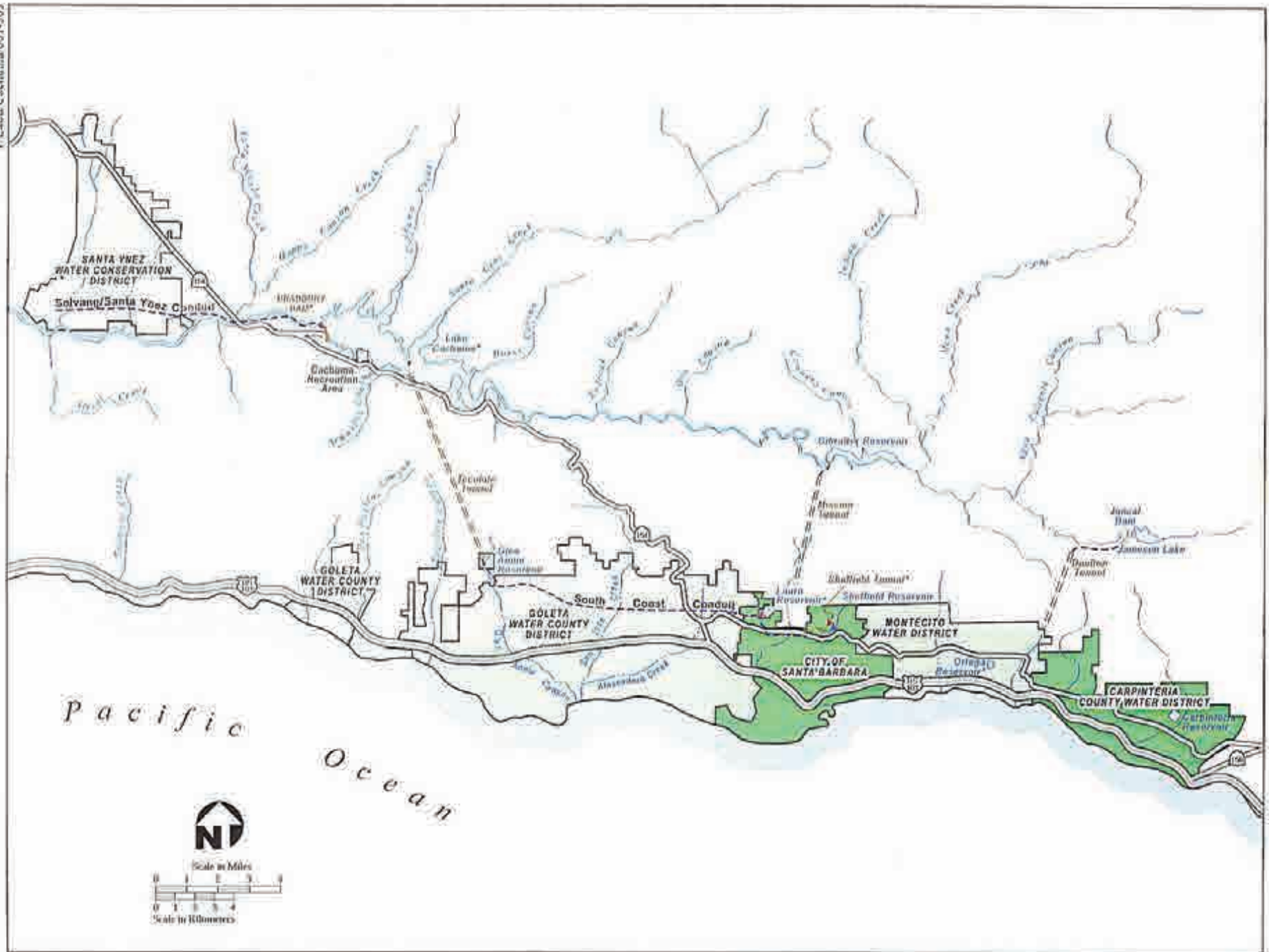


Figure 1-2. Cachuma Project Facilities and Member Units

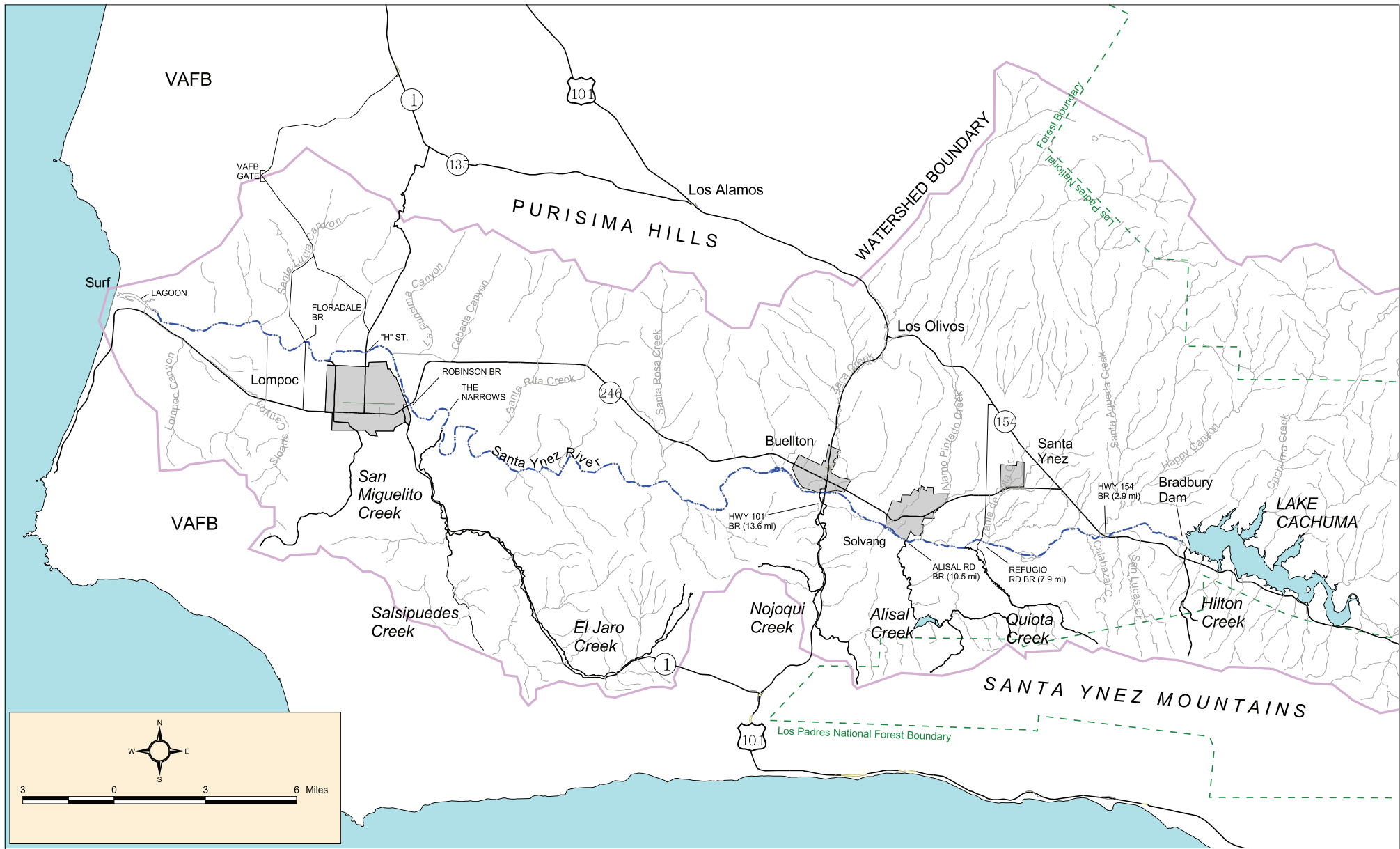


FIGURE 1-3. Lower Santa Ynez River Below Bradbury Dam

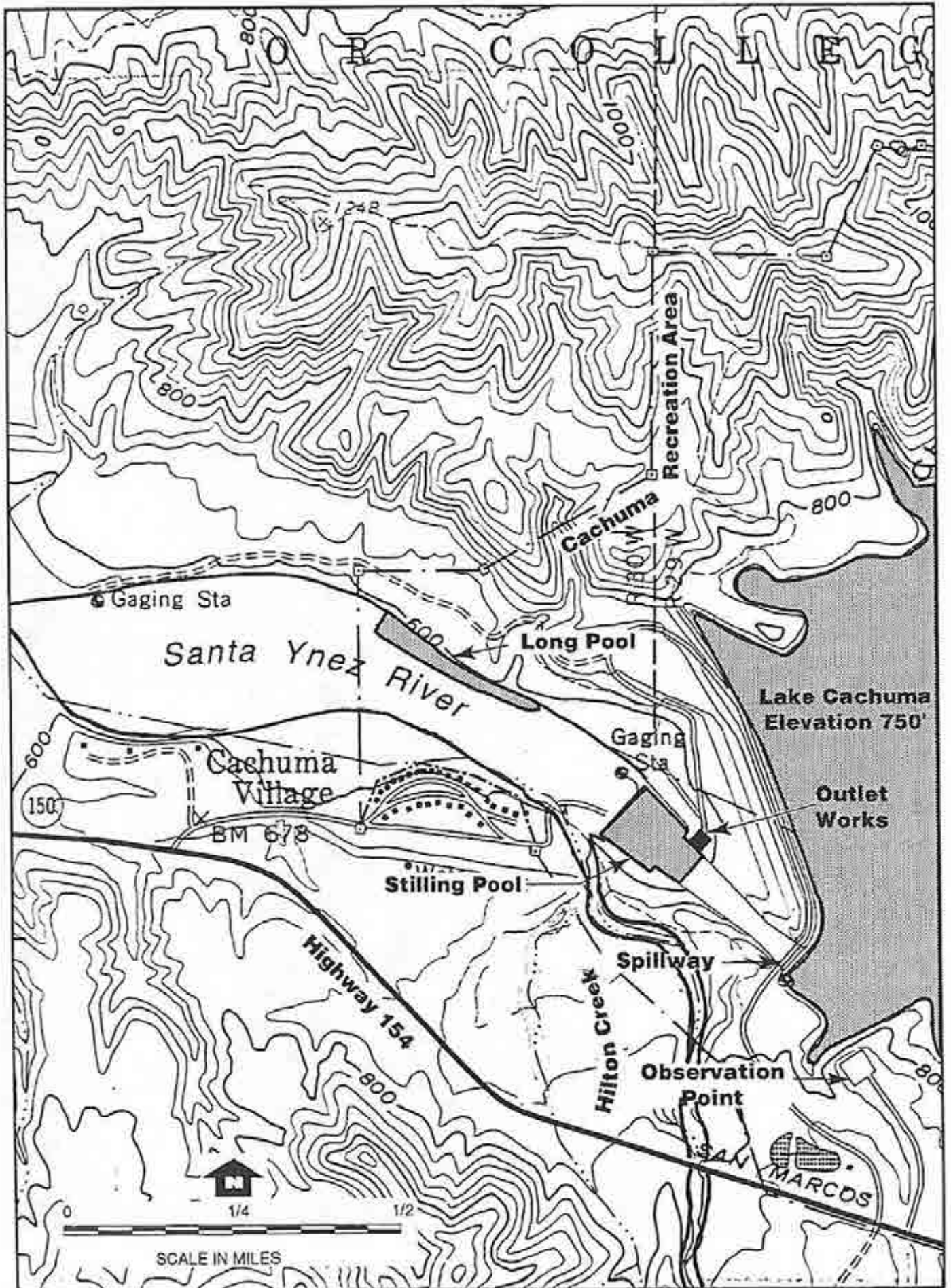


Figure 2-1 Bradbury Dam

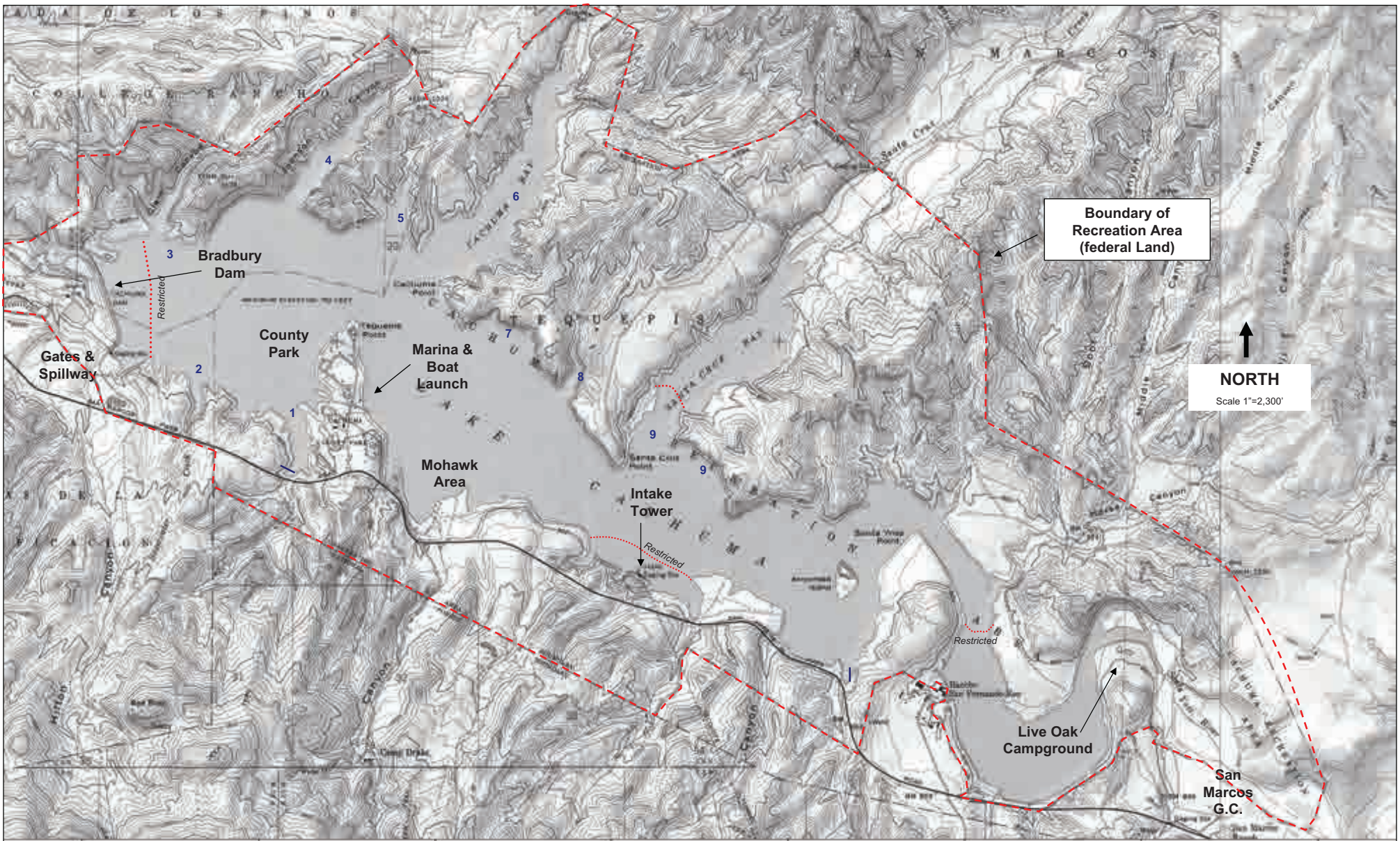


Figure 2-2. Lake Cachuma

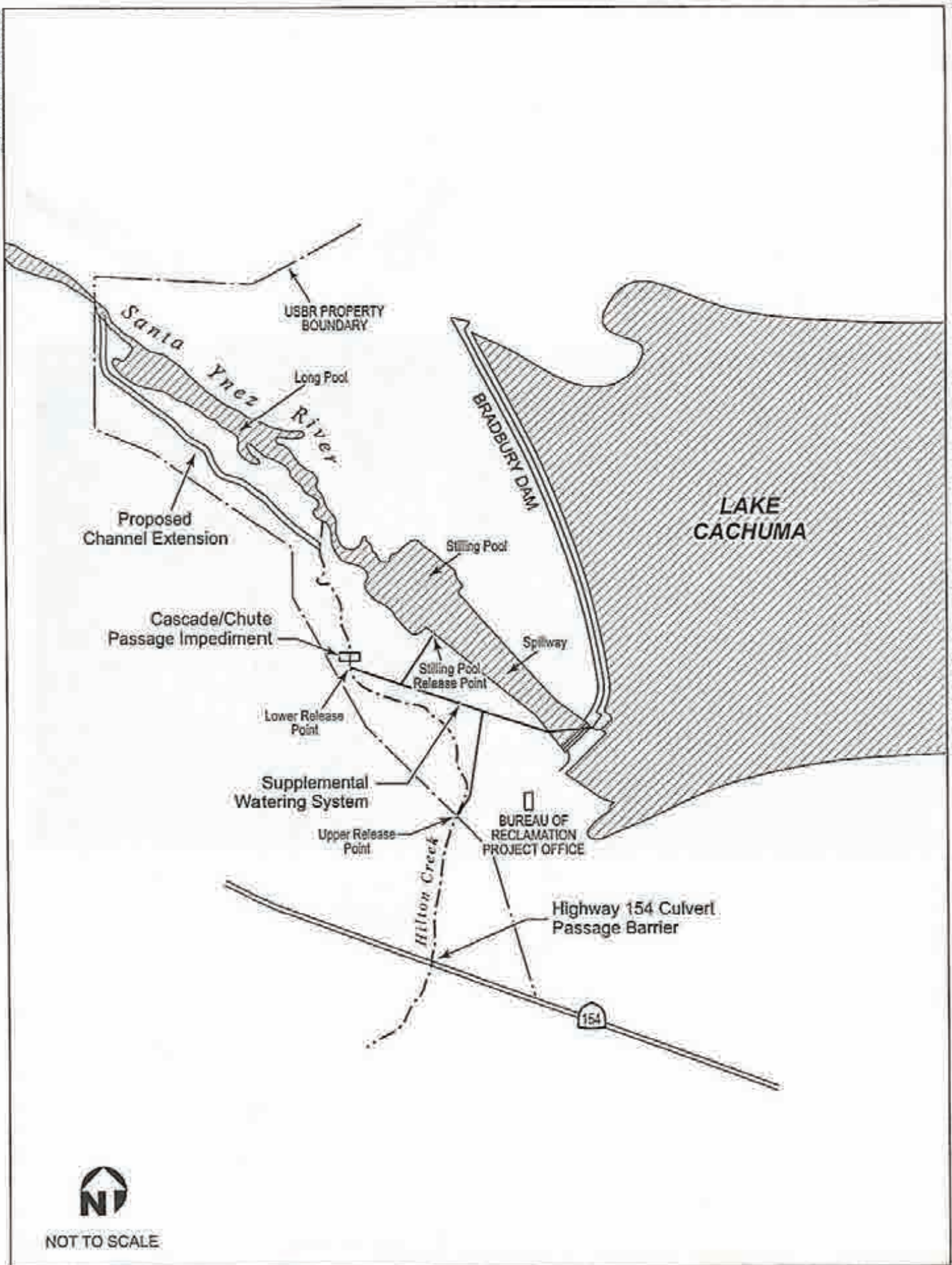


Figure 2-3. Hilton Creek Enhancement Projects

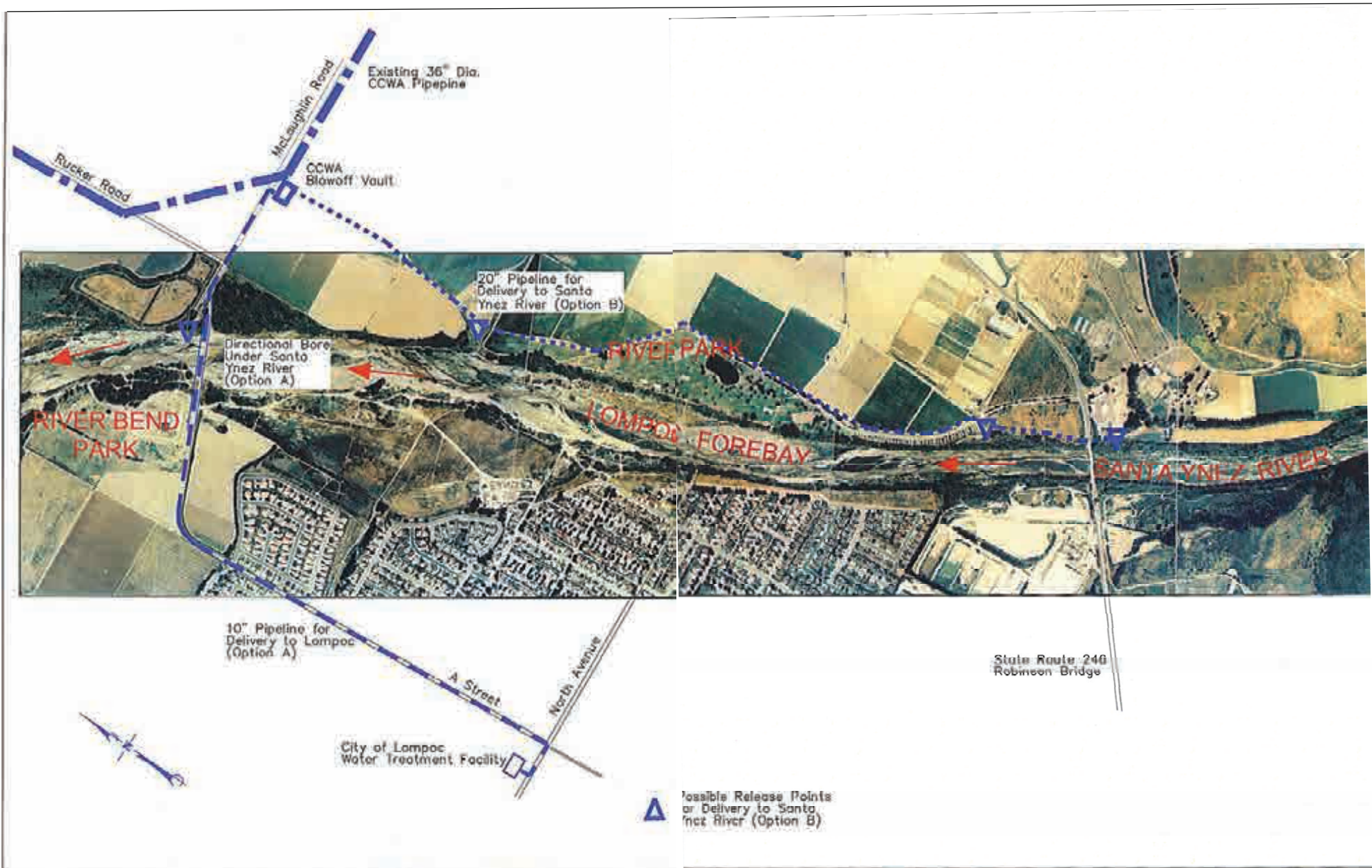


Figure 3-1. Below Narrows Exchange Project Facilities

**SCHEMATIC PRESENTATION OF THE HYDROLOGIC MODEL
FOR THE SANTA YNEZ WATERSHED
(SYRHM)**

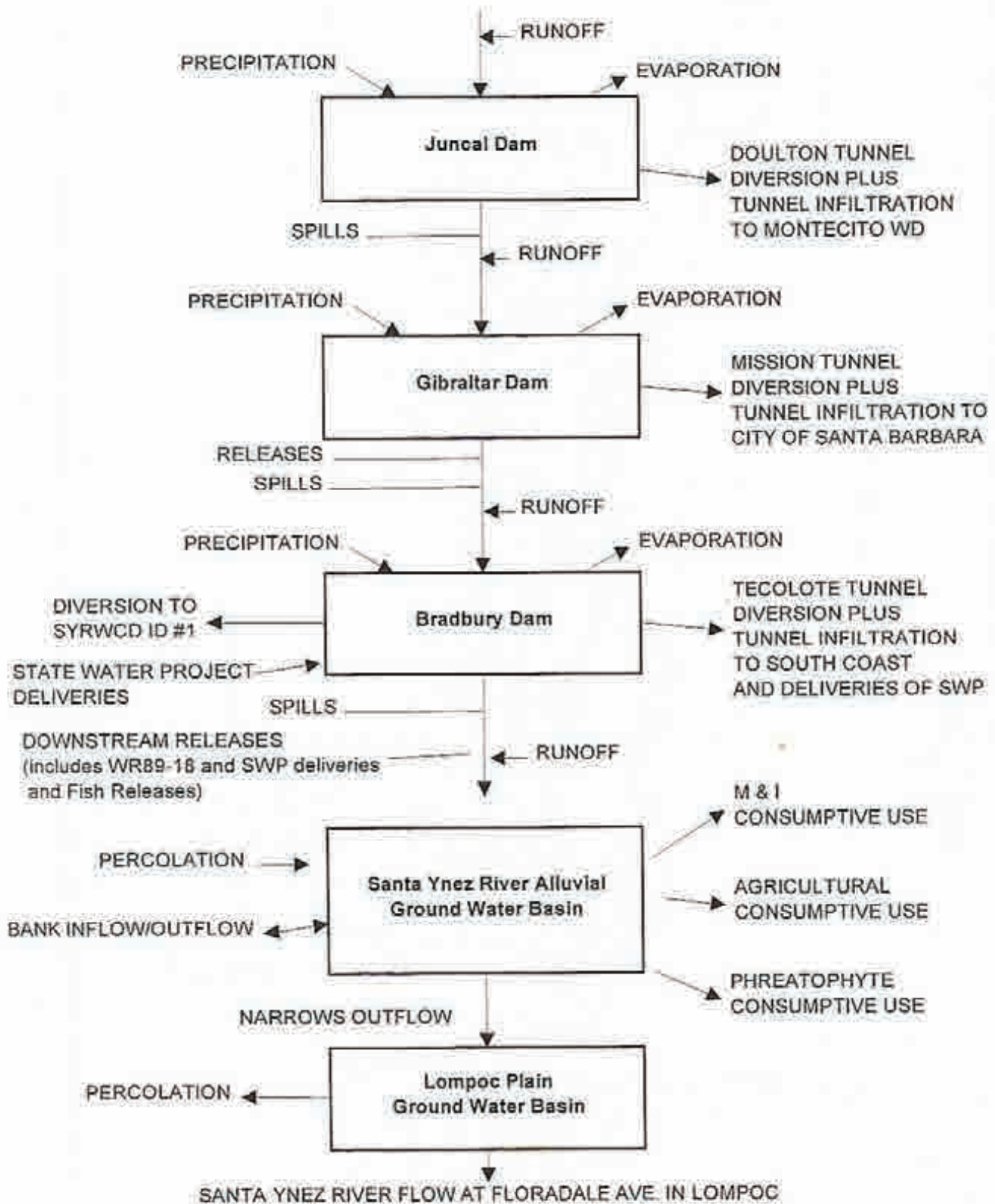


Figure 4-1 Overview of Santa Ynez River Hydrology Model

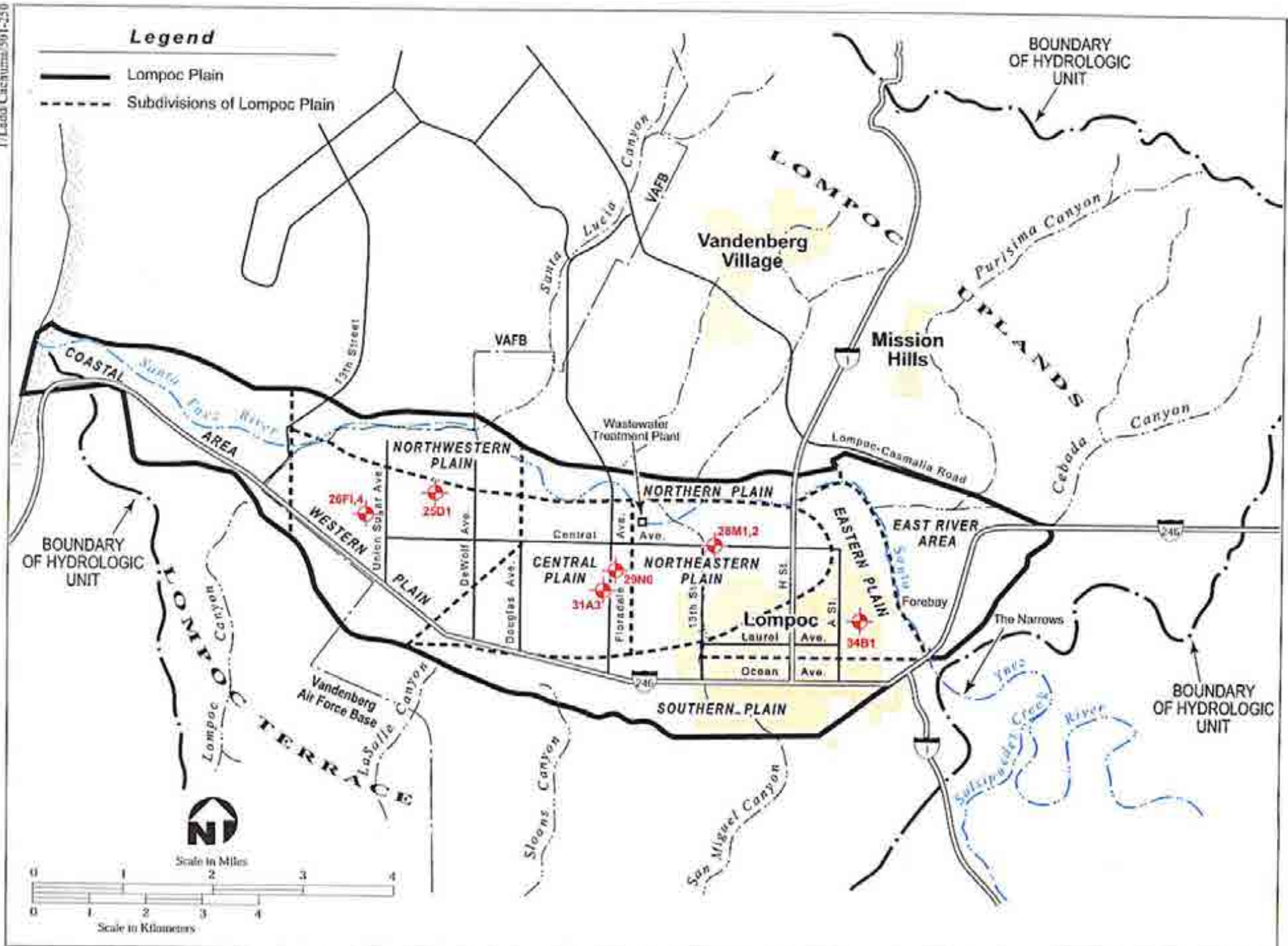
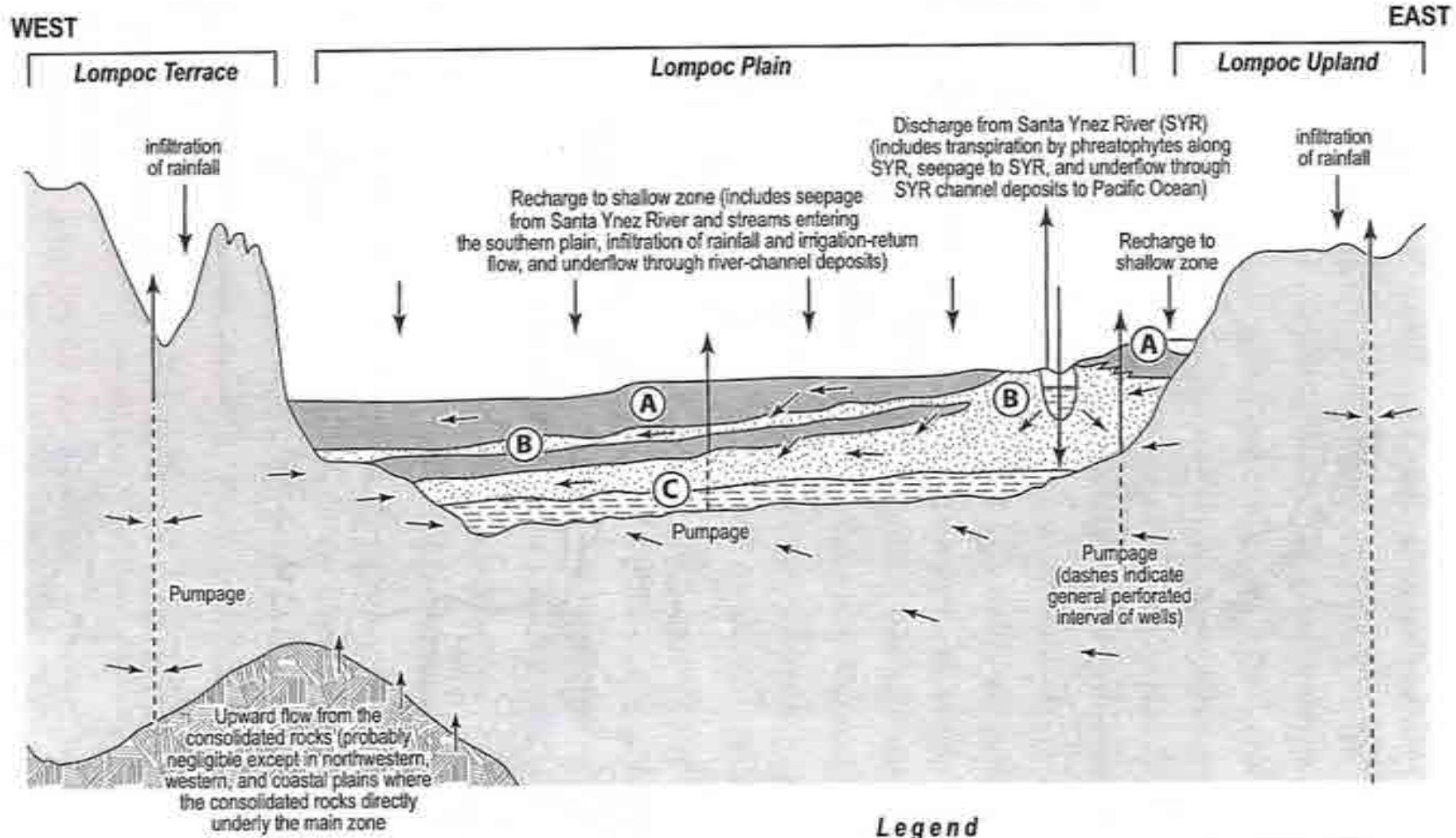











Figure 4-3. Boundaries of the Lompoc Plain Basin and Key Wells



	Silt and Clay		Lower zone	Upper Aquifer	
	Sand-Contains Some Gravel and Lenses of Silt and Clay		Consolidated Rocks		Lower Zone
	Gravel		Direction of Groundwater Flow		Consolidated Rocks
					Direction of Groundwater Flow

Source: Bright et al. 1997

Figure 4-4. Conceptualization of Groundwater Flow in the Lompoc Basin

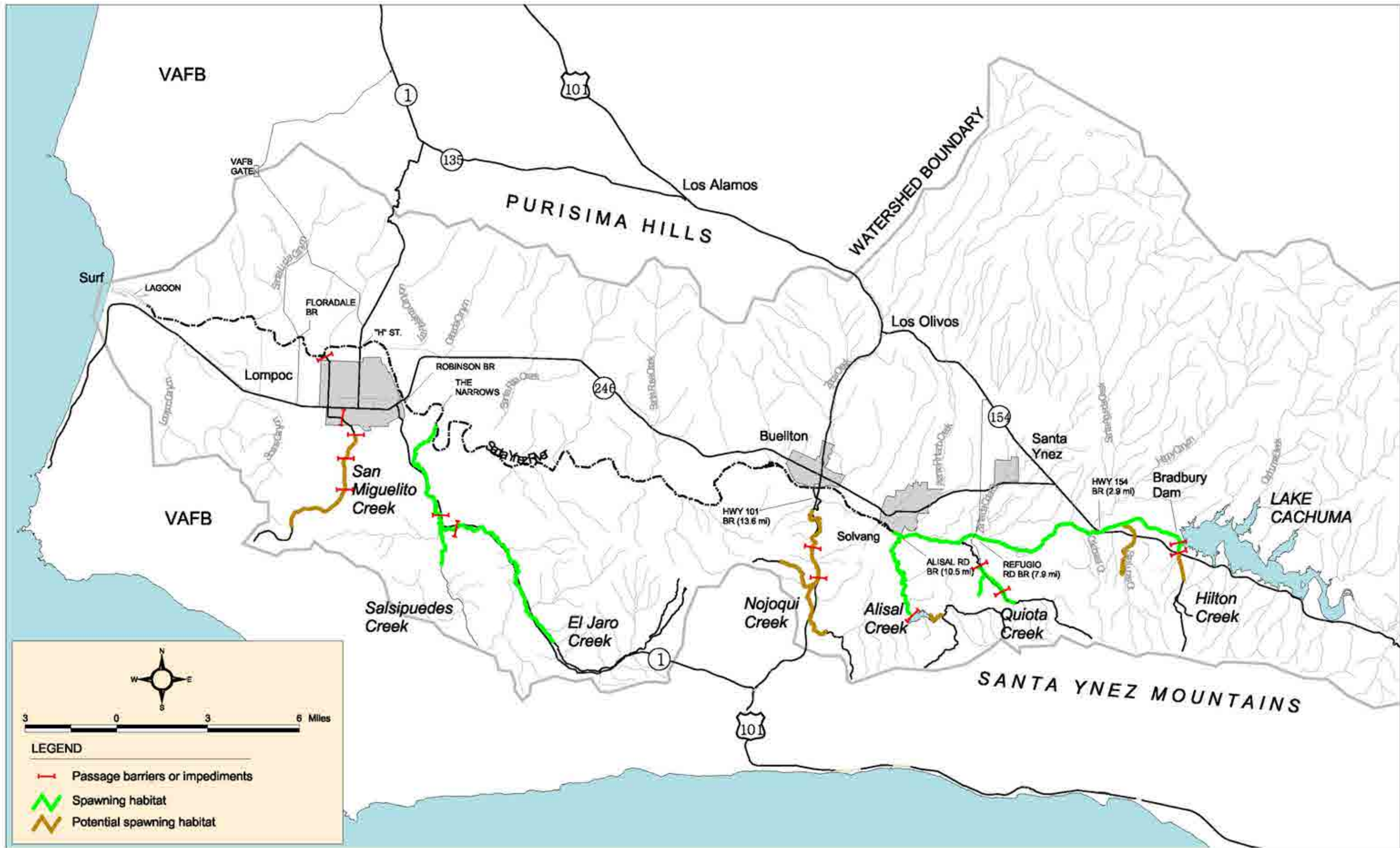


Figure 4-5. Steelhead Spawning on the Lower River



Source: Lower Santa Ynez River Fish Management Plan

Figure 4-6. Steelhead Rearing Habitat on the Lower River

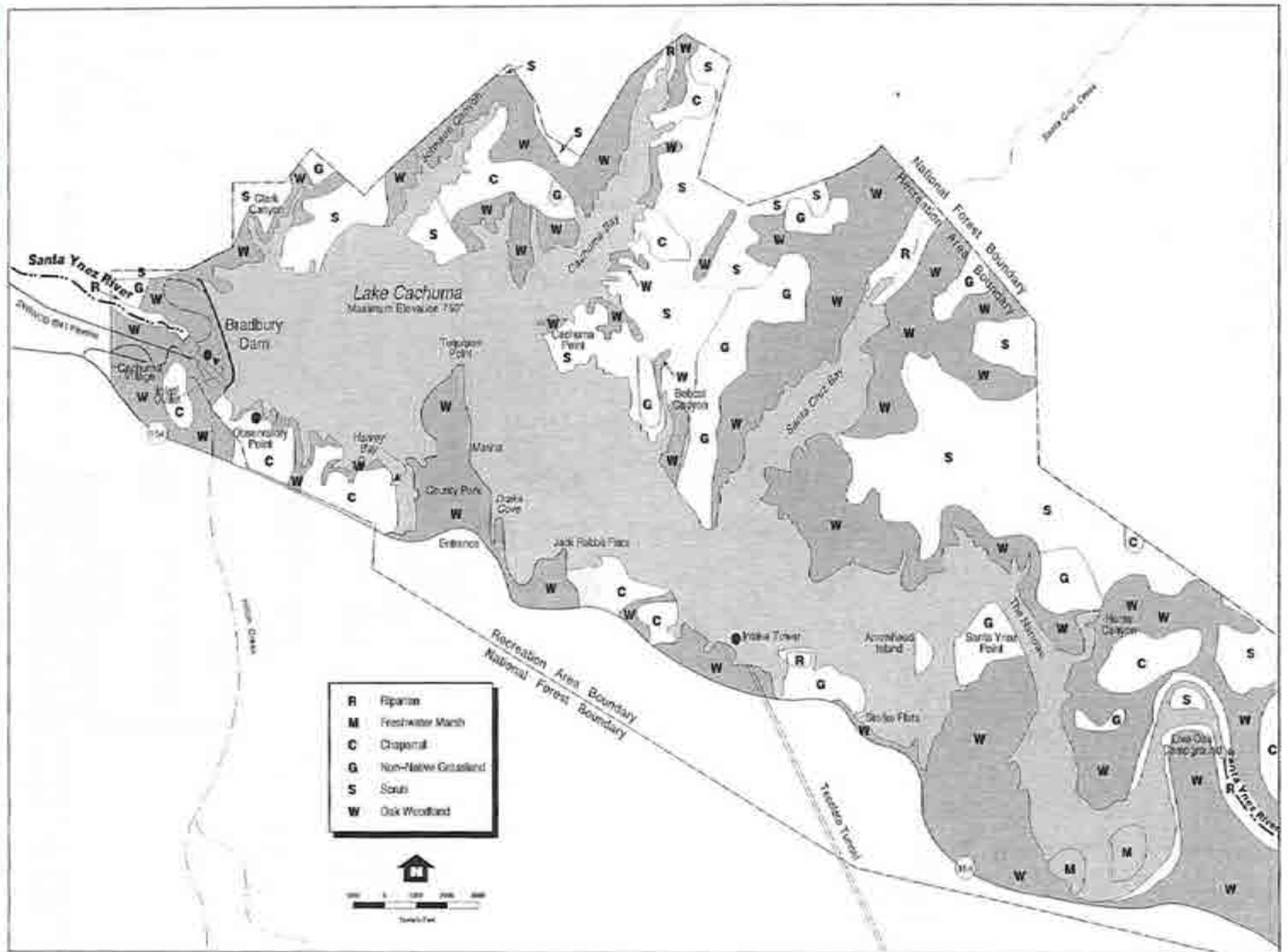


Figure 4-7 Vegetation Surrounding Lake Cachuma

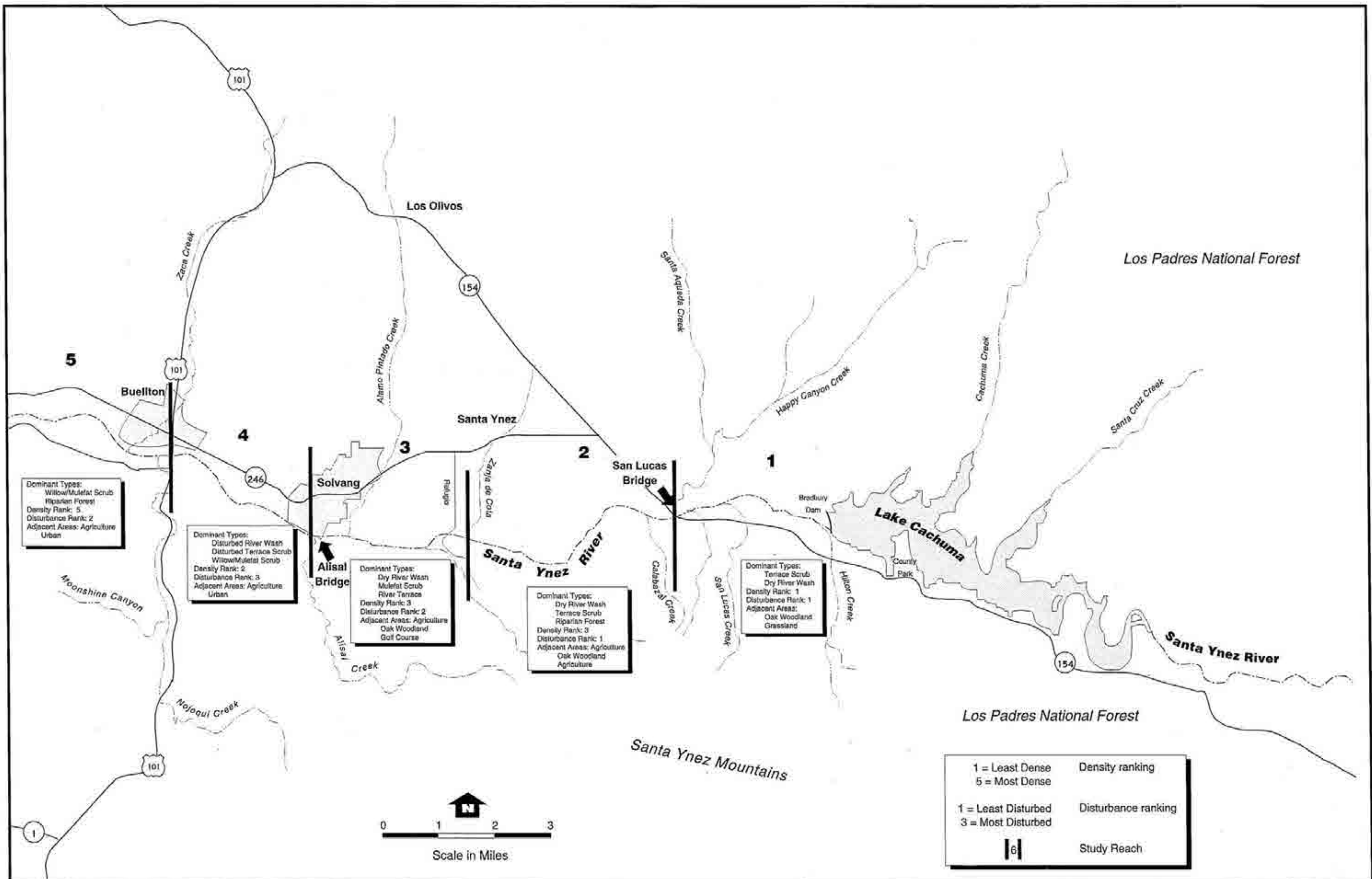


Figure 4-8a. Vegetation along the Lower Santa Ynez River

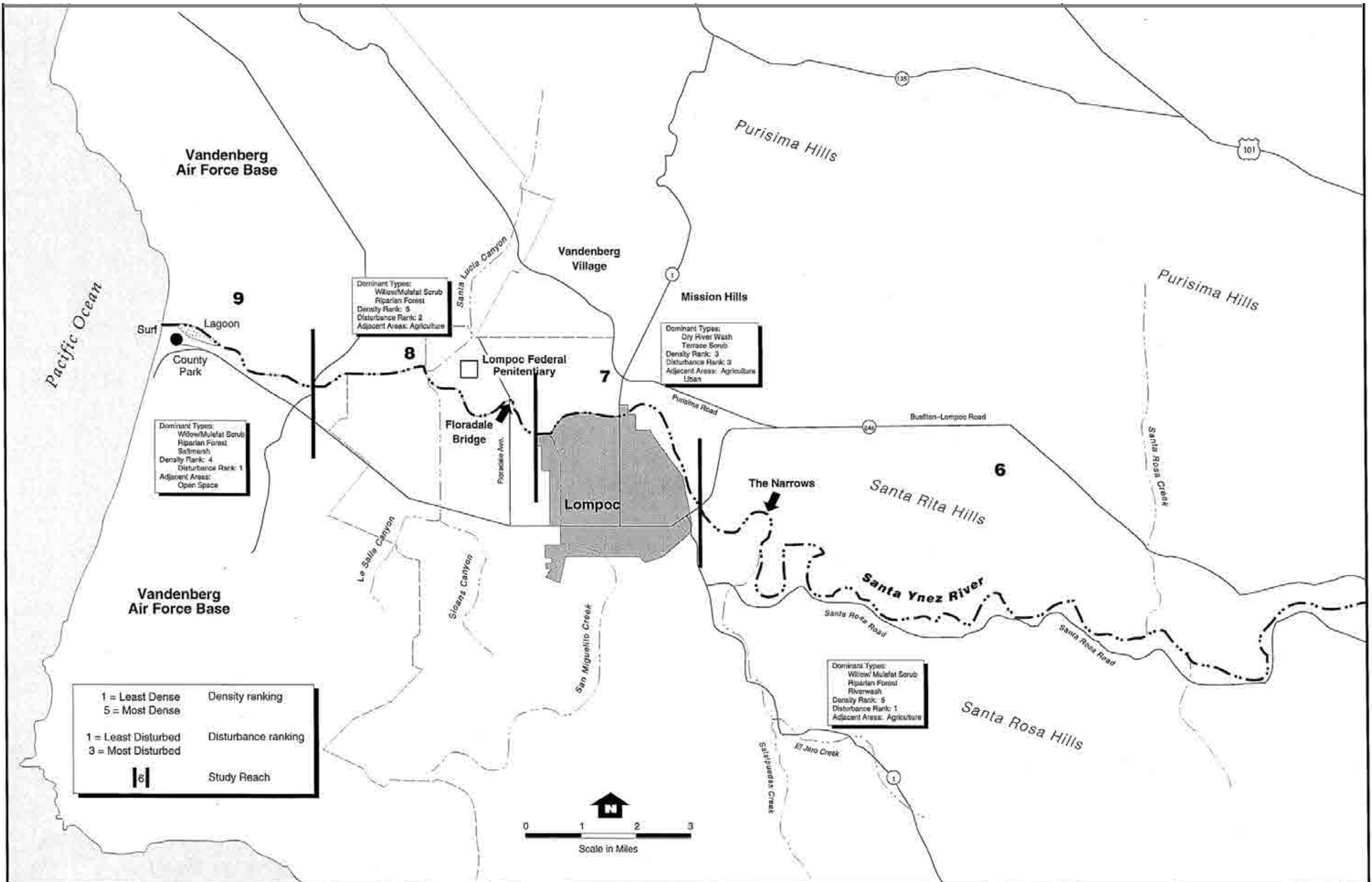


Figure 4-8b. Vegetation along the Lower Santa Ynez River

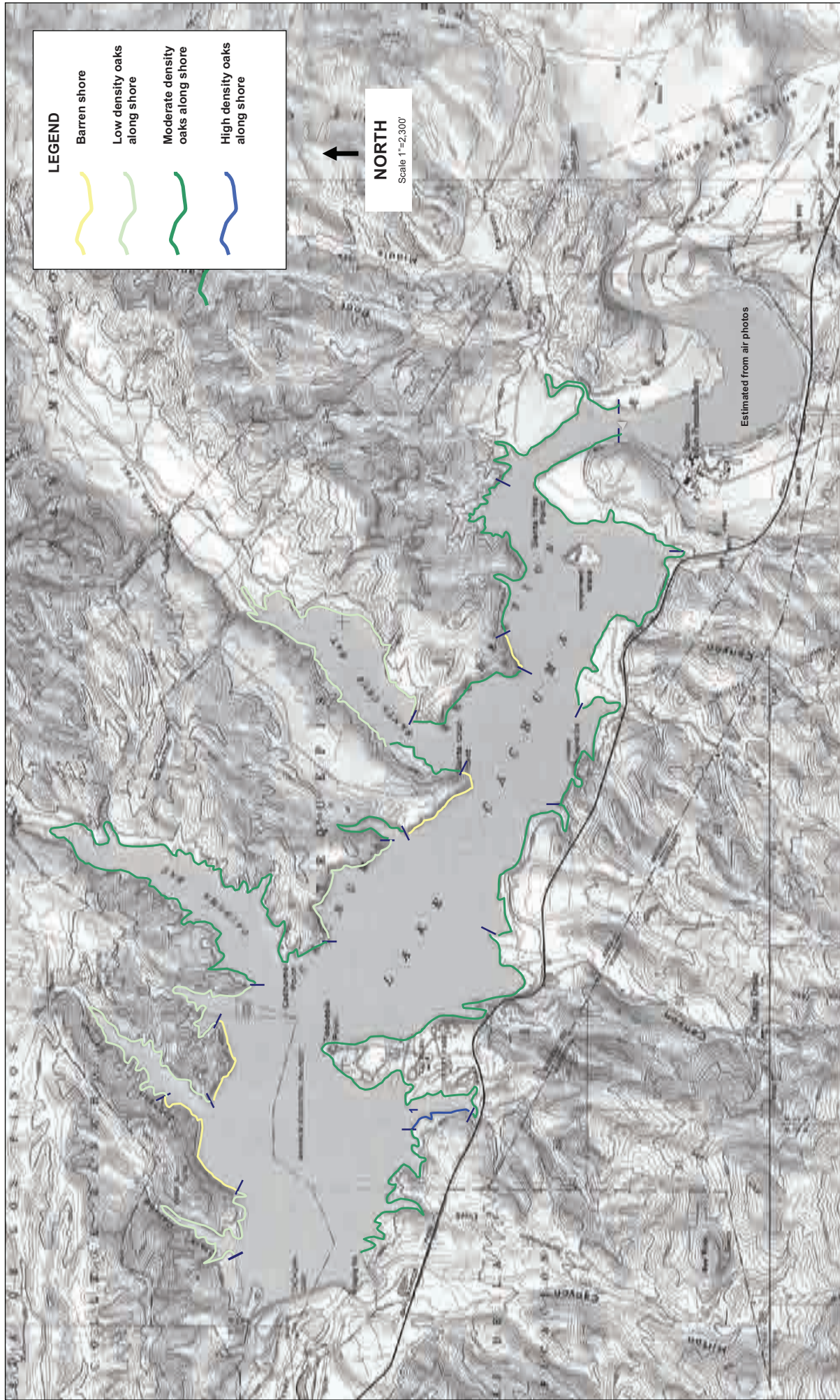

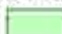
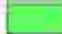




Figure 4-9. Oak Trees Along the Margins of Lake Cachuma



Legend

-  Study Units
- Density Category (trees per acre)
 -  0-12
 -  13-24
 -  25+
-  Area excluded from study (i.e. developed, unavailable, or fully wooded)

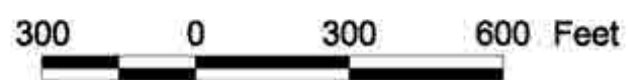




Figure 4-11. Existing Oak Trees in the Recreation Area



Legend

 Study Units: number indicates trees to be planted

 Area excluded from study (i.e. developed, unavailable, or fully wooded)

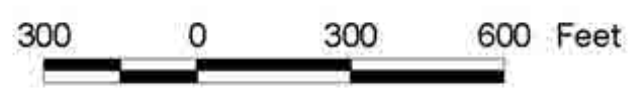


Figure 4-12. Proposed Tree Restoration Areas

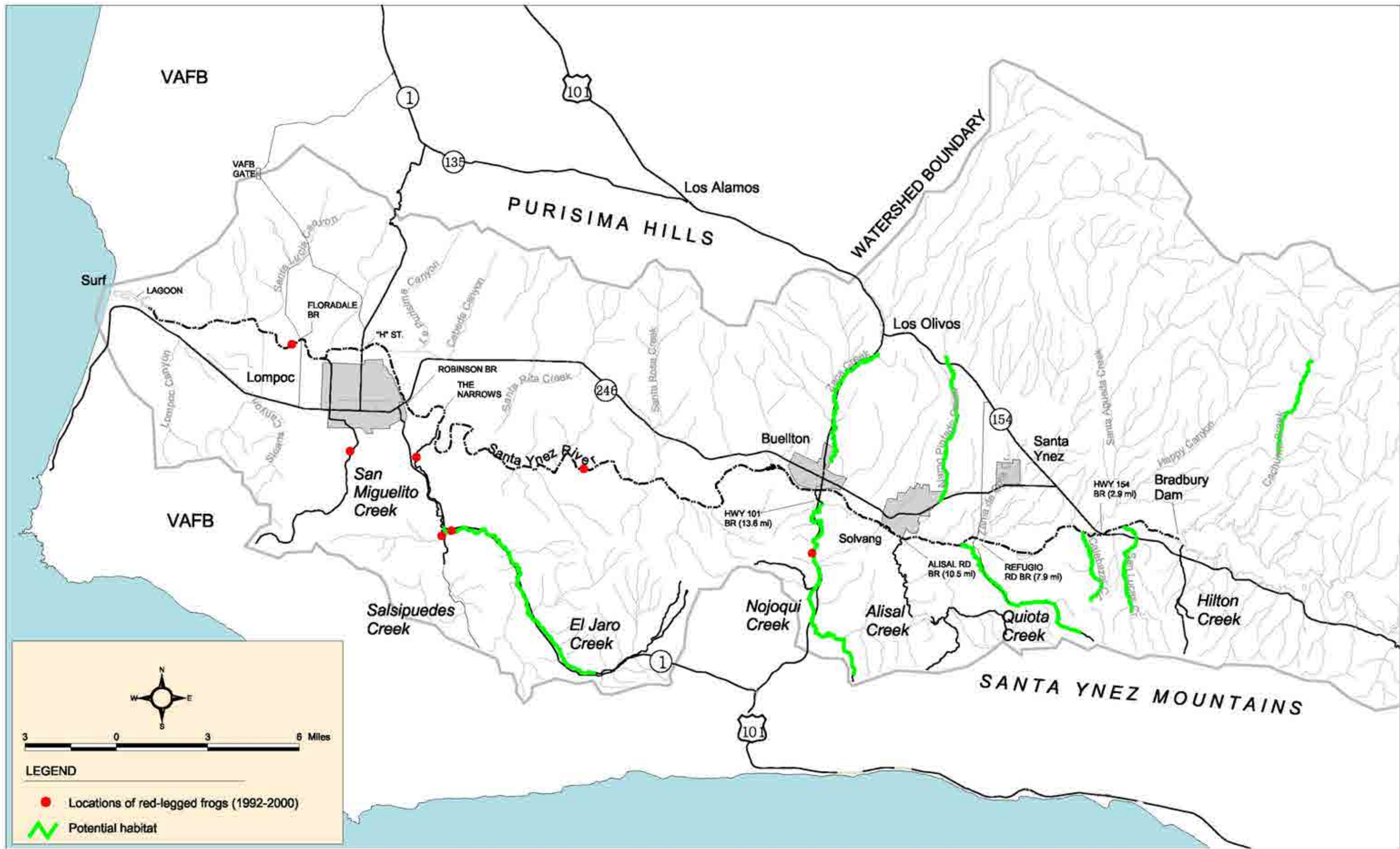


Figure 4-13. Locations of Red-legged Frogs on the Lower Santa Ynez River

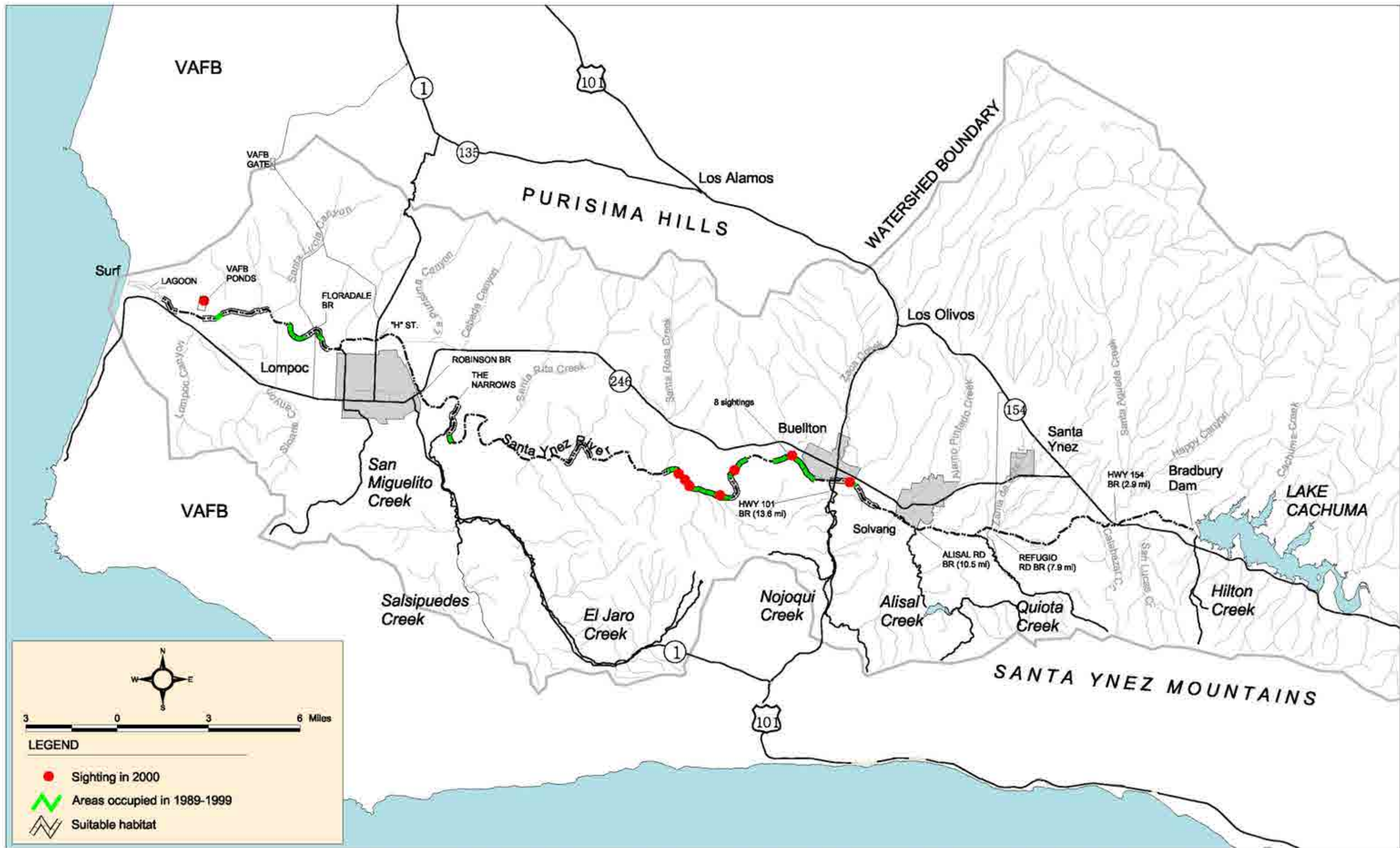


Figure 4-14. Locations of Willow Flycatchers and Suitable Habitat the Lower Santa Ynez River

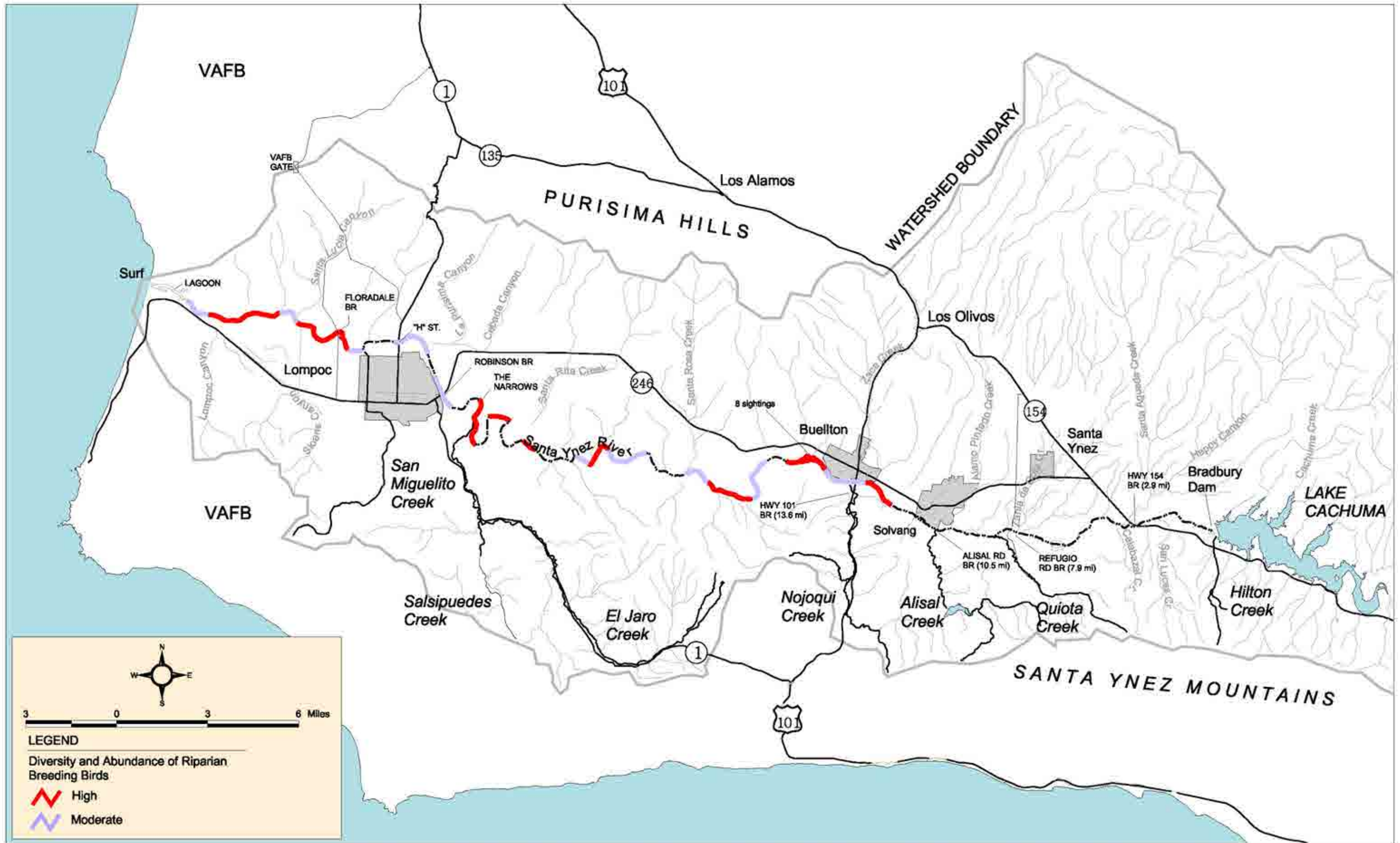


Figure 4-15. Habitat for Riparian Breeding Birds on the Lower Santa Ynez River

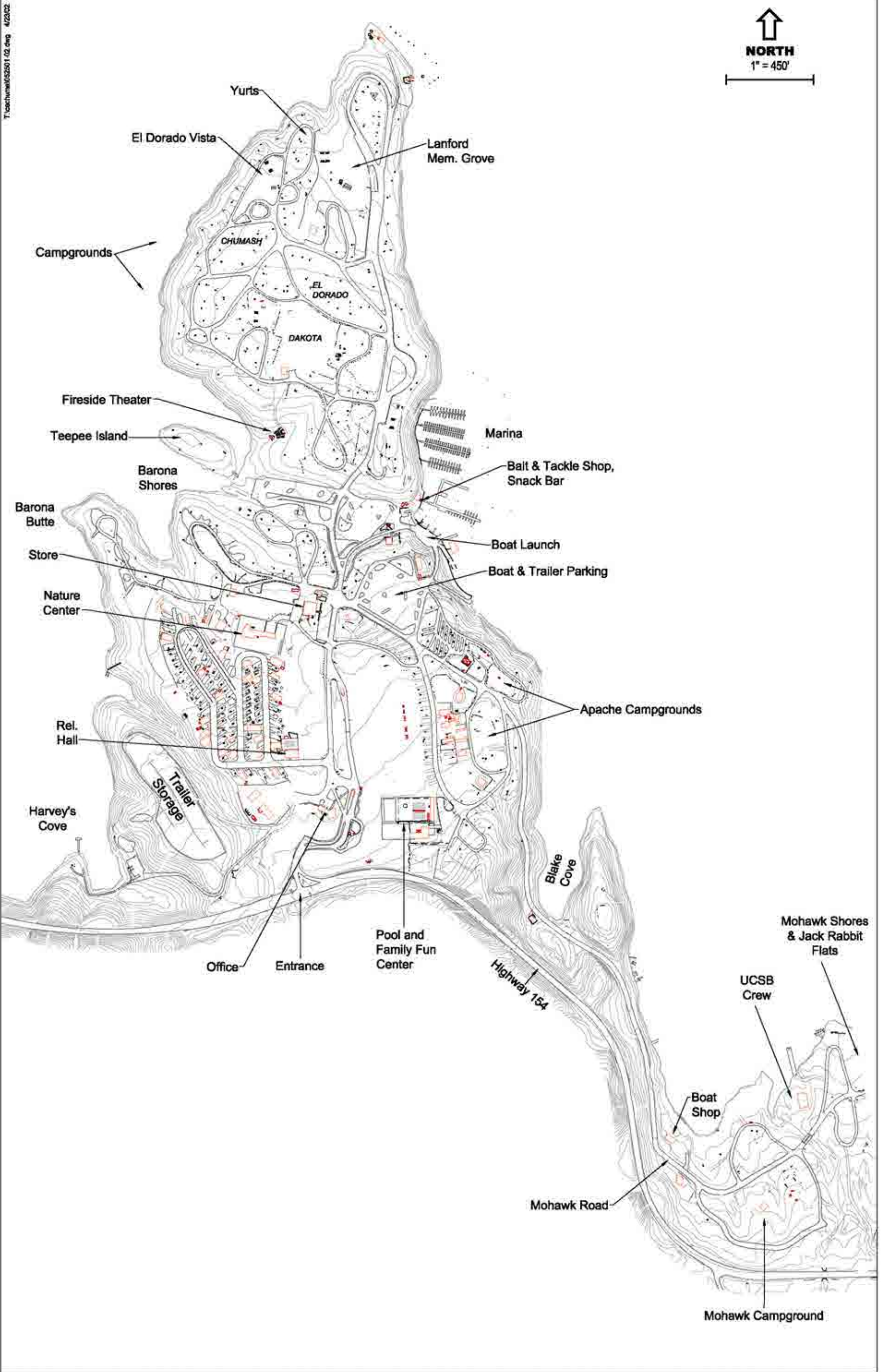


Figure 4-16. Recreational Facilities at Lake Cachuma

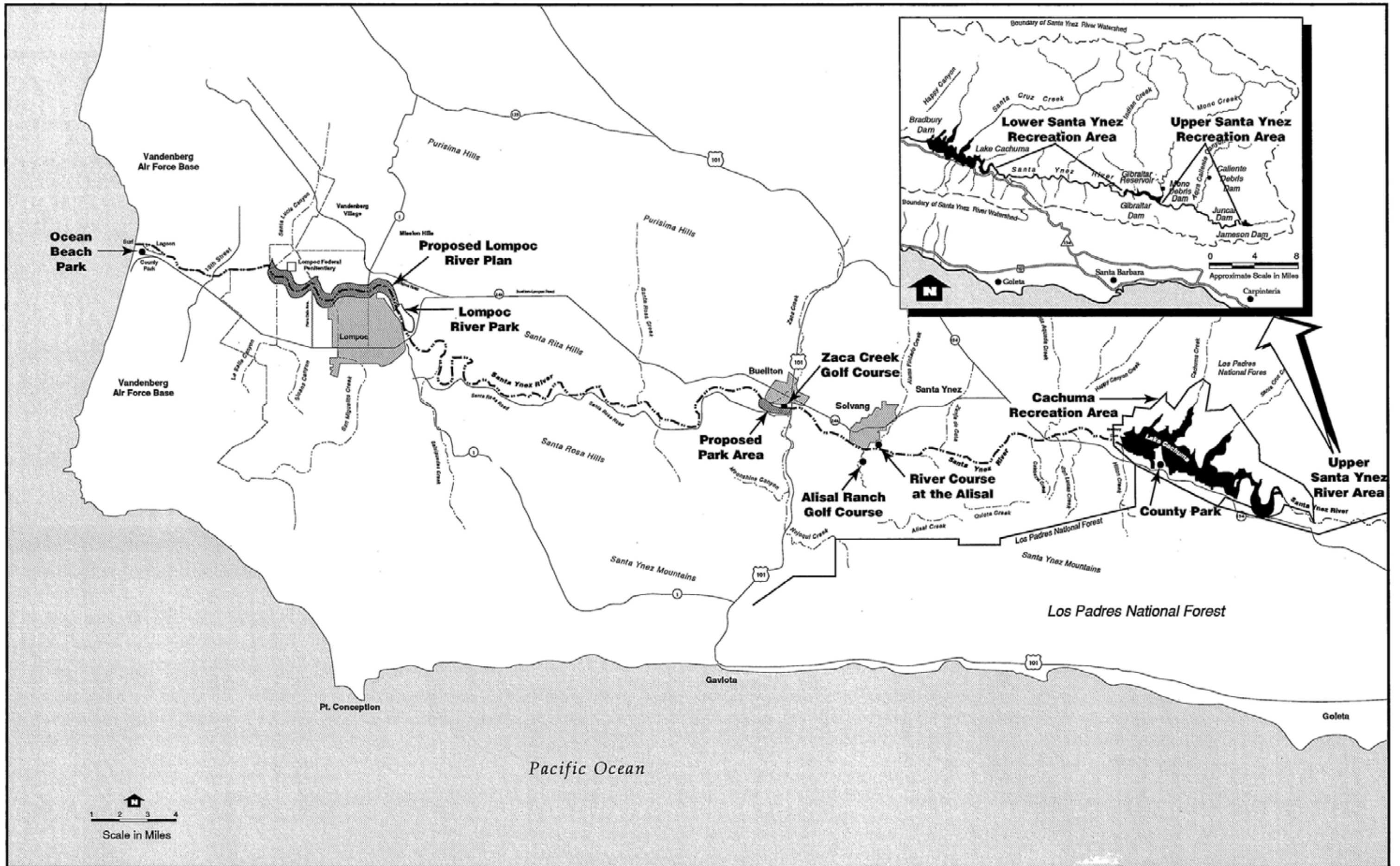


Figure 4-17. Recreation along the River Downstream of Bradbury Dam

Figure 4-18 has been removed



SOURCE: Impact Sciences, Inc. – August 2010

FIGURE 4.19

Storke Flats - Cachuma Project Oak Tree Restoration Program



SOURCE: Impact Sciences, Inc. – August 2010

FIGURE 4.20

Bradbury Dam - Cachuma Project Oak Tree Restoration Program



SOURCE: URS – June 2009

FIGURE 4-21

Overview of Cachuma Lake Recreation Area