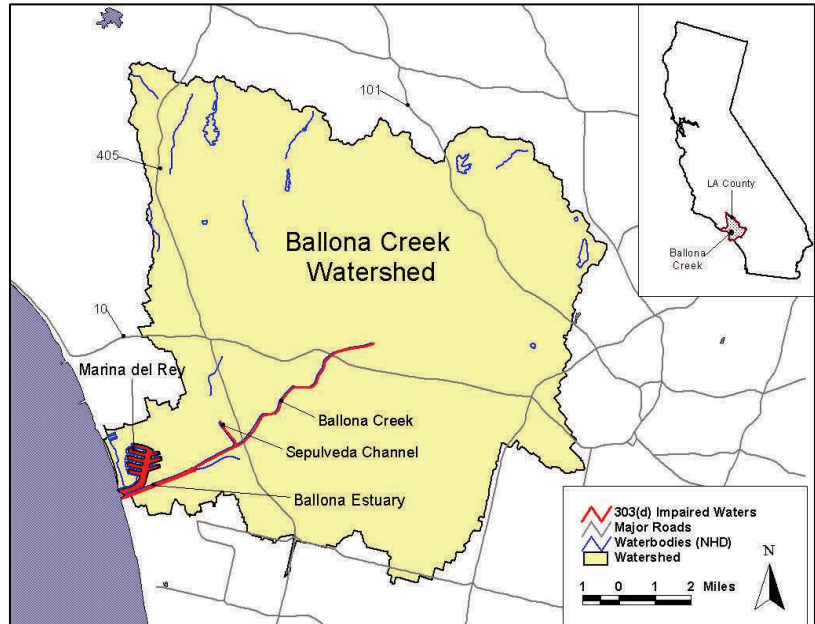


Water Quality Report Card		Trash in Ballona Creek Watershed	
Regional Water Board:	Los Angeles, Region 4	<b>STATUS</b>	<input checked="" type="checkbox"/> Conditions Improving
Beneficial Uses Affected:	REC-1, REC-2, WARM, WILD, EST, MAR, RARE, MIGR, SPWN, COMM, SHELL, WET, COLD		<input type="checkbox"/> Data Inconclusive
Implemented Through:	NDPES Permits, MS4 Permits, Statewide Storm Water Permits		<input type="checkbox"/> Improvement Needed
Effective Date:	August 2005		<input type="checkbox"/> Targets Achieved/Water Body Delisted
Attainment Date:	September 2015	<b>Pollutant Type:</b>	<input checked="" type="checkbox"/> Point Source <input type="checkbox"/> Nonpoint Source <input type="checkbox"/> Legacy

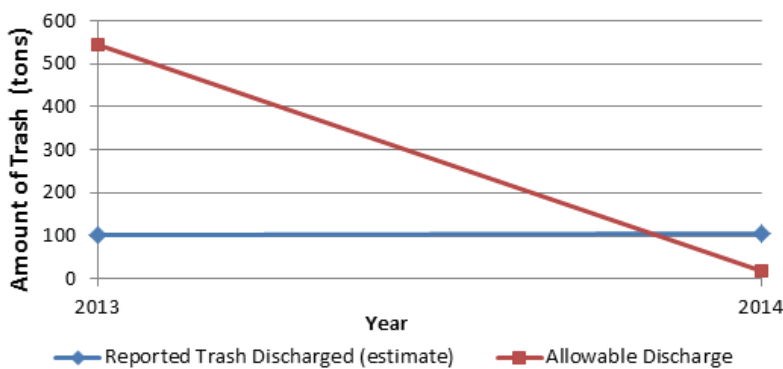
### Water Quality Improvement Strategy

Trash in rivers, streams and other waterways impairs beneficial uses, particularly recreational and wildlife uses. Ballona Creek, in coastal Los Angeles County, is impaired by trash. Urban storm water runoff through municipal storm drains has been identified as the major source of trash in the Ballona Creek Watershed and is the primary focus of implementation measures to attain water quality standards. Interim and final waste load allocations (WLAs) were assigned, in the [Ballona Creek and Wetland Trash TMDL](#), to the County of Los Angeles, California Department of Transportation, and six cities located in the watershed. WLAs are to be achieved through a phased schedule of reductions in trash discharges for each permittee, with a trash reduction goal of 100% by September 30, 2015. The TMDL includes multiple compliance strategies to achieve WLAs, which include the development and implementation of devices, and systems of devices, in storm drains or catch basins to collect trash (including “full capture” and “partial capture” systems). Institutional controls of trash include educational programs, enforcement of litter laws and street sweeping. The Ballona Creek and Wetland Trash TMDL was adopted by the Regional Water Board in [September 2001](#) and approved by USEPA in August 2002. The TMDL was revised by the Regional Water Board in [March 2004](#).

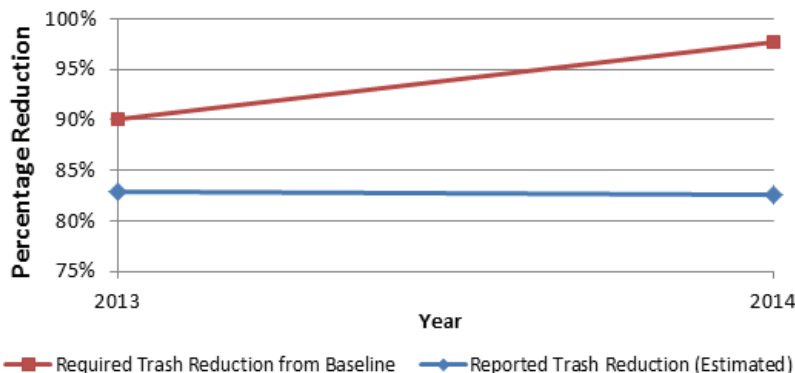
### Ballona Creek Watershed



### Trash Reduction (Tons) in Ballona Creek



### Trash Reduction (Percentage) in Ballona Creek



The graphs are based on trash reduction values from full capture systems only. Partial capture systems and institutional controls are not accounted for. As such, actual reduction may be lower than the listed values.

### Water Quality Outcomes

- Trash abatement continues to increase as the final compliance deadline draws near with some permittees making gradual progress while others have accelerated their efforts. Non-uniform catch basin designs, and, on some streets, the lack of sufficient pressure from the accumulating storm water during storm events, has made installation of some catch basin systems more difficult.
- A few permittees are on track to complete installation of full capture systems by the end of the compliance period.
- Methods to appropriately demonstrate “100% trash reduction” or “zero trash” discharge in these situations has been addressed in a [June 2015 TMDL reconsideration](#). Revision of implementation and monitoring plans are expected upon final approvals of the TMDL reconsideration.
- Local ordinances to ban single use plastic bags have been adopted in the cities of Culver City, Los Angeles, Los Angeles County, and West Hollywood.
- Qualitative observations have shown a significant reduction of trash since adoption of the TMDL.