

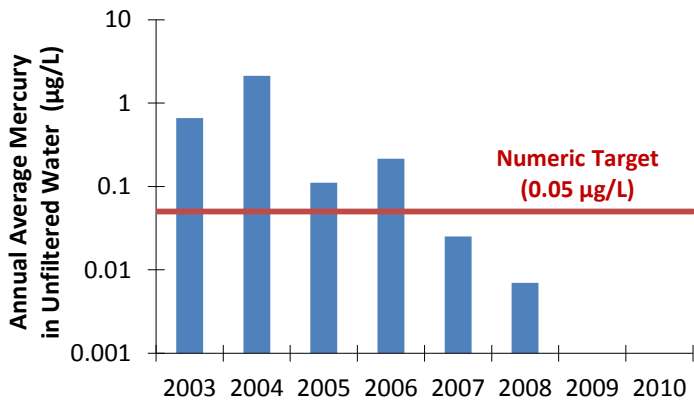
Total Maximum Daily Load Progress Report		Clear Creek and Hernandez Reservoir Mercury	
Regional Water Board	Central Coast, Region 3	<b>STATUS</b>	<input checked="" type="checkbox"/> Conditions Improving
Beneficial uses affected:	COLD, MUN, WARM		<input type="checkbox"/> Data Inconclusive
Pollutant(s) addressed:	Mercury		<input type="checkbox"/> Improvement Needed
Implemented through:	Non-regulatory Action		<input type="checkbox"/> TMDL Achieved/Waterbody Delisted
Approval date:	June 21, 2004		

### TMDL Summary

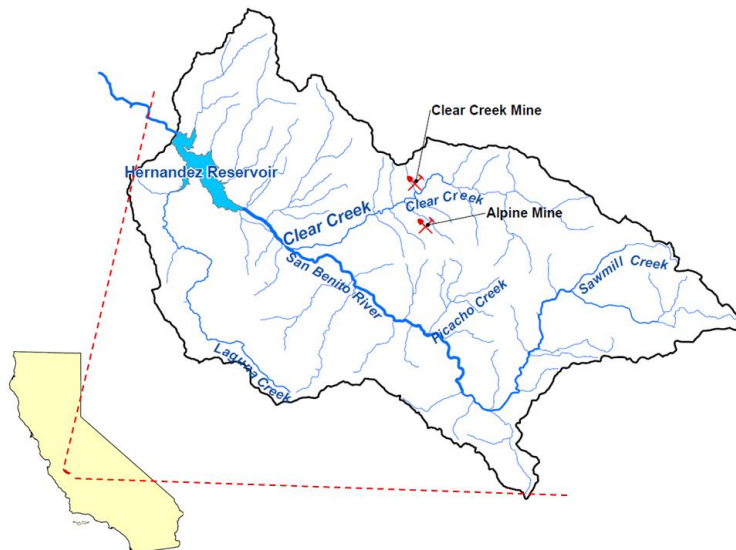
Clear Creek and Hernandez Reservoir are on California's 1998 Clean Water Act section 303(d) List as impaired by mercury. Elevated levels of mercury in the water column exceed water quality objectives for the municipal (MUN) beneficial use designation. Fish tissue from Hernandez Reservoir contains mercury at levels considered unsafe for consumption. The primary source of the mercury loading is abandoned mines managed by the United States Bureau of Land Management (USBLM). The Central Coast Regional Water Board developed the [Clear Creek and Hernandez Reservoir Mercury TMDL](#) and implementation plan, which was approved by U.S. EPA in June 2004. The TMDL is implemented through non-regulatory measures by USBLM. USBLM has implemented erosion control and other measures to reduce mercury loading from the abandoned mine sites. USBLM actions include:

- 1) Removal and/or entombment of mining wastes;
- 2) Capping of residual material with clean, native (non-mercury ore) soil; and
- 3) Re-vegetation of disturbed areas

### TMDL Waste Load Allocations/Load Allocations



### Clear Creek Watershed



### Water Quality Outcomes

- Clear Creek is currently meeting water quality objectives for mercury.
- Since mid-2007 the total mercury in Clear Creek (annual average) achieves the numeric target of 0.050 µg/L.
- The data also indicate that Hernandez Reservoir is currently meeting water column objectives for mercury; however, the most recent fish tissue sampled from the reservoir (2008) exceeds the TMDL numeric target of 0.3 mg/kg methylmercury in certain species.
- Seventeen consecutive quarterly samples achieve the water column numeric target. Twenty eight samples are required to show compliance with the numeric target to support delisting. Additional samples are being collected and delisting Clear Creek will be evaluated.

### Clear Creek Water Quality

