

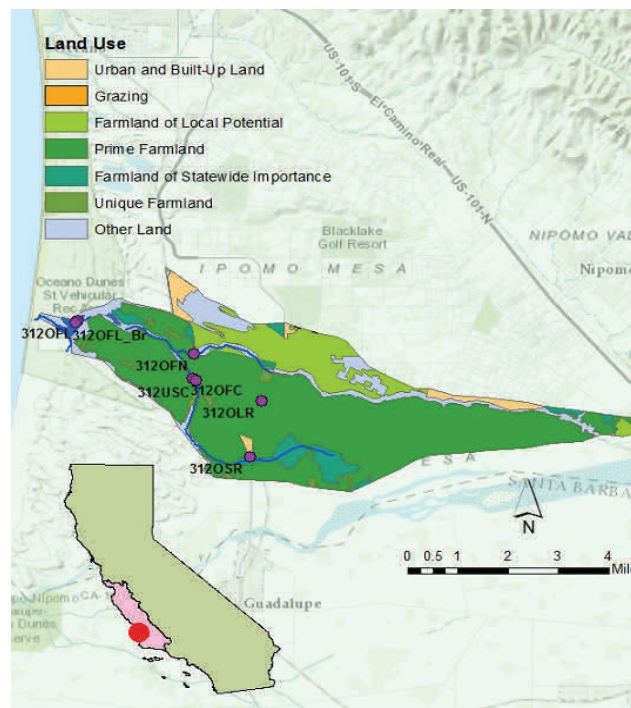
Water Quality Report Card		Nitrate in Oso Flaco Creek	
Regional Water Board:	Central Coast, Region 3	STATUS	<input type="checkbox"/> Conditions Improving <input type="checkbox"/> Data Inconclusive <input checked="" type="checkbox"/> Improvement Needed <input type="checkbox"/> Targets Achieved/Waterbody Delisted
Beneficial Uses Affected:	MUN, COLD, WARM		
Implemented Through:	Conditional Waiver of WDR and Non-Regulatory Action (TMDL Grant)		
Effective Date:	May 2014		
Attainment Date:	2044	Pollutant Type:	<input type="checkbox"/> Point Source <input checked="" type="checkbox"/> Nonpoint Source <input checked="" type="checkbox"/> Legacy

Water Quality Improvement Strategy

Oso Flaco Creek is a sub-watershed within the Santa Maria River Watershed. The 9,605 acre watershed is located in San Luis Obispo County. Water quality impairments in Oso Flaco Creek and its tributaries exist due to exceedances of water quality objectives for nitrate. Nitrate (nitrate as N) levels exceed Basin Plan objectives for the protection of the municipal water supply and aquatic life beneficial uses. The Central Coast Regional Water Board has adopted a [Santa Maria Watershed Nutrients TMDL](#) that identifies croplands as the primary source of nitrate in the watershed. The TMDL establishes a numeric target that is equal to the existing Basin Plan water quality objective of 10 mg/L nitrate as N for municipal water uses, and a year-round watershed specific numeric target of 5.7 mg/L nitrate as N for the protection of aquatic life beneficial uses.

The TMDL is implemented through the Central Coast Water Board's [2012 Conditional Waiver of Waste Discharge Requirements for Discharges from Irrigated Lands in the Central Coast Region](#) (Ag Order), and accompanying Monitoring and Reporting Program^a. The TMDL implementation schedule calls for achieving numeric targets by October 2044.

Oso Flaco Creek Watershed



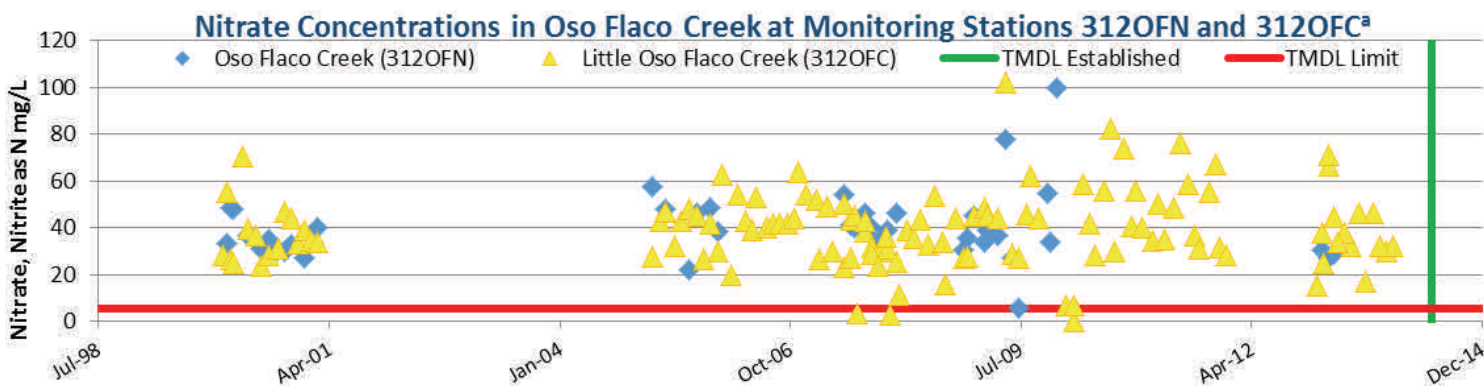
TMDL Load Allocations^b

Site ID	Est. Existing Mean Annual Load (lbs.)	Mean Annual Loading Capacity (lbs.)	% Reduction Goal	NO ₃ -N Numeric Target Used for Loading Capacity (mg/L)
3120FN	135,853	18,887	86%	Year- Round (5.7)
3120FC	185,430	27,382	85%	Year- Round (5.7)

^bTable information summarized from Table 6.2 in the [Santa Maria Watershed Nutrients TMDL](#) document.

Water Quality Outcomes

- No new data is available to confirm a change in nitrate levels in Oso Flaco Creek.
- Early implementation of the TMDL occurred during the Ag Order adoption process.
- Implementation was achieved through non-regulatory actions-installation of bark biofilters and vegetated swales.
- The Central Coast Regional Water Board will continue Ag Order implementation and monitoring efforts to track progress in attaining water quality objectives.



^aSee [Central Coast Ambient Monitoring Program \(CCAMP\)](#) website for additional water quality monitoring data.