

# Water Quality Report Card

## OC Pesticides and PCBs in Calleguas Creek

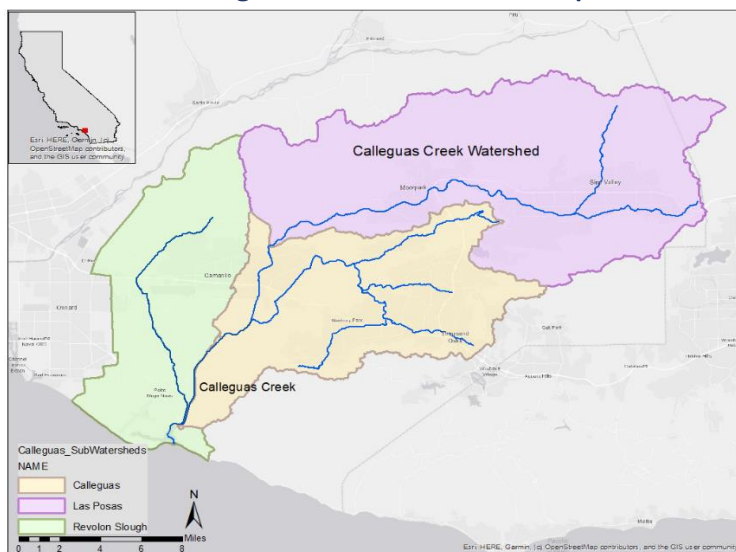
<b>Regional Water Board:</b>	Los Angeles, Region 4
<b>Beneficial Uses Affected:</b>	WARM, WET, WILD, RARE
<b>Implemented Through:</b>	Wastewater (POTW) Permits, MS4 Permit, Conditional Waiver of WDRs for Irrigated Agriculture Discharges
<b>Effective Date:</b>	March 14, 2006
<b>Attainment Date:</b>	Water Column WLAs for POTWs: 3/14/27 Sediment WLAs & LAs for MS4 & Irrigated Agriculture: 3/14/27

<b>STATUS</b>	Conditions Improving		
<b>Pollutant Type:</b>	Point Source	Nonpoint Source	Legacy
<b>Pollutant Source:</b>	<ul style="list-style-type: none"> <li>• Agricultural Runoff</li> <li>• Urban Runoff</li> <li>• POTWs</li> <li>• Groundwater Seepage</li> </ul>		

### Water Quality Improvement Strategy

Calleguas Creek is in southeast Ventura County and a small portion of Los Angeles County. Eleven of fourteen creek reaches in the Calleguas Creek Watershed were included on USEPA's Clean Water Act 303(d) list of impaired waters in 2002 due to excessive levels of Organochlorine (OC) Pesticides and PCBs in water, sediment, and/or fish tissue. [Calleguas Creek OC Pesticides and PCBs Total Maximum Daily Load \(TMDL\) 2007](#), assigned allocations to discharges from publicly owned treatment works (POTWs), municipal separate storm sewers (MS4s), and irrigated agricultural land. The TMDL included an implementation plan for meeting the water quality objectives by reducing active sources of OC Pesticides and PCBs, implementing agricultural Best Management Practices (BMPs), and identifying areas where BMP implementation would be most effective. All are required to meet final allocations by March 14, 2027.

### Calleguas Creek Watershed Map



### Final TMDL Waste Load Allocations and POTW Exceedances

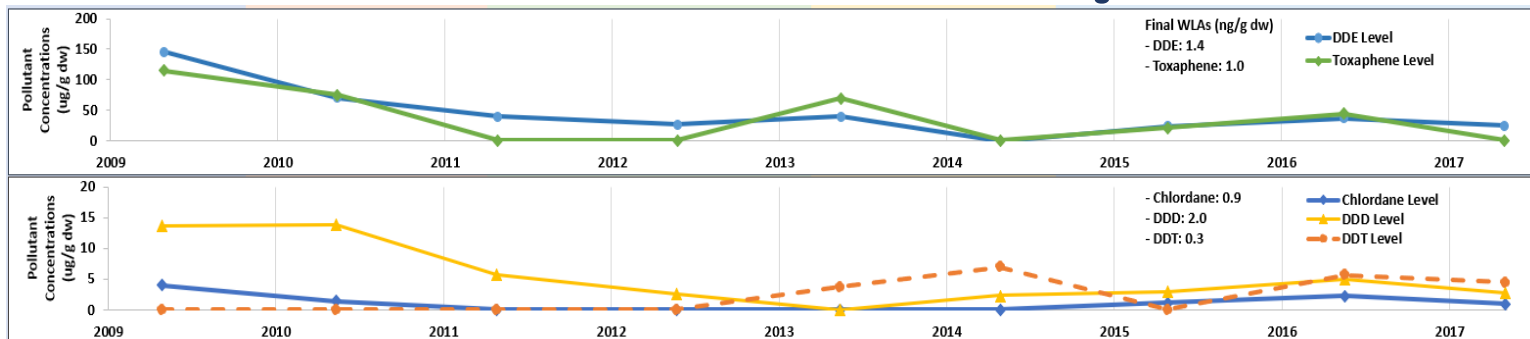
POTW	Chlordane 0.59 ng/L	DDT 0.59 ng/L	Dieldrin 0.14 ng/L	PCBs 0.17 ng/L
<b>Hill Canyon</b>	NONE	NONE	NONE	NONE
<b>Simi Valley</b>	NONE	NONE	NONE	NONE
<b>Camarillo</b>	NONE	NONE	NONE	NONE

Source: TMDL Annual Reports, 2009-2019

### Water Quality Outcomes

- **Water Quality:** Based on the [2009-2019](#) annual monitoring reports, POTWs discharging to surface water are meeting all final WLAs.
- **Sediment Quality:** Pollutant levels in sediments are below final allocations in most reaches except for Revolon Slough. The required reduction of OC pesticides in sediment is implemented through the MS4 permit. To further reduce contamination in Revolon Slough, additional sediment BMPs on agricultural land uses will be needed.
- **Fish Tissue:** Fish tissue concentrations have been declining but are still above the fish tissue targets

### Pesticide Concentrations in Sediment in Revolon Slough



Sediment condition in Revolon Slough. PCBs and Dieldrin data are all non-detect and not included in the graph. Source: Calleguas Creek Watershed TMDLs Annual Report, [2009-2019](#)