

# Water Quality Report Card

## Temperature in Redwood Creek

**Regional Water Board:** North Coast, Region 1

**Beneficial Use Affected:** COLD

**Implemented Through:** Monitoring

**Effective Date:** 2002

**Attainment Date:** N/A

**STATUS:** Improvement Needed

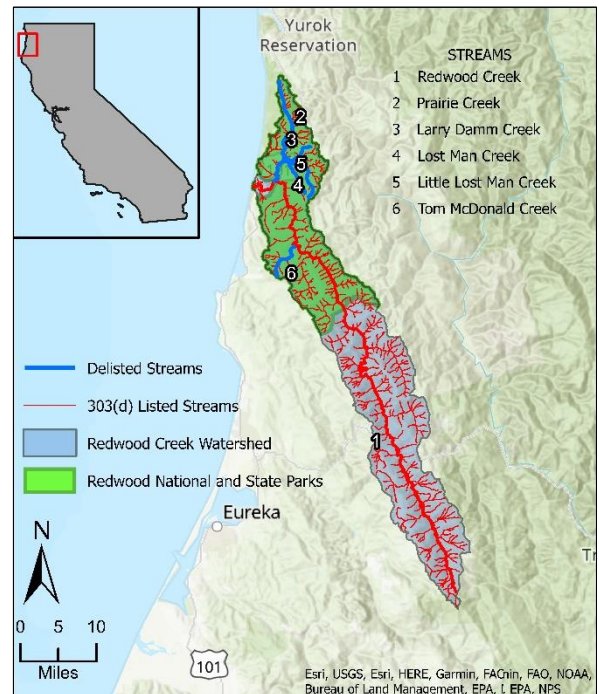
**Pollutant Type:** Nonpoint Source

**Pollutant Source:** Riparian Vegetation Removal

### Redwood Creek Watershed Temperature Impairment

The Redwood Creek watershed is a 180,000-acre drainage basin on the northern Californian coast. Redwood National and State Parks owns the lower portion of the watershed and 90% of the upper portion is owned by lumber and ranching interests. The [Redwood Creek Watershed](#) is listed on the US EPA Clean Water Act Section 303(d) list for temperature. Elevated surface water temperatures negatively impact anadromous salmonid migratory and reproductive processes. A [sediment Total Maximum Daily Load \(TMDL\)](#) was established in 1998 and the entire watershed was added to the 303(d) list for temperature impairment in 2002, but a schedule has yet to be set for development of a temperature TMDL. Lost Man Creek, Little Lost Man Creek, Prairie Creek, and Tom McDonald Creek, tributaries to Redwood Creek, were removed from the 303(d) list in the [State Water Resources Control Board's 2018 Integrated Report](#). Since 2008, calculated maximum weekly maximum temperatures (MWMTs) for all four tributaries met the [evaluation guideline of 16.0°C](#), with the exception of a single 0.5°C exceedance in Lost Man Creek in 2015. All four recently delisted tributaries are on land managed by Redwood National and State Parks. Lower Redwood Creek exceeds the 16.0°C MWMT threshold in each year between 2000-2016 for which data are available. Continued monitoring is needed to further resolve the full extent of temperature impairment in the watershed.

### Redwood Creek Watershed Map



### Water Quality Outcomes

- Streams delisted in 2018 update:
  - Prairie Creek
  - Lost Man Creek
  - Little Lost Man Creek
  - Tom McDonald Creek
- Larry Damm Creek delisted in 2012 update
- Remainder of streams in Redwood Creek Watershed remain on Section 303(d) List for temperature impairment

Maximum Weekly Maximum Temperature by Year  
Redwood Creek, Mainstem and Tributaries

