

SAN FRANCISCO BAY REGIONAL BOARD

Accelerating Climate Change Action

Eileen M. White, Executive Officer
October 28, 2022



Accelerating Climate Change Action



- Policies and permitting
- Municipal Stormwater Program
- 401 Water Quality Certification Program
- Water Recycling
- Sustainable Groundwater Management
- Regional Collaboration



Climate Change Action

Basin Plan Amendment

- Climate change impacts to water quality
- Potential considerations for projects in coastal waters



Regional Collaboration

- **Bay Conservation and Development Commission**
Bay Adapt Joint Platform
- **Bay Area Regional Collaborative**
Shared Workplan
- **San Francisco Estuary Partnership**
Estuary Blueprint



Climate Change Actions

- **Vulnerability assessments and adaptation plans**

<u>Facility/Project Type</u>	<u>Regulatory Tool</u>
Wastewater facilities	surveys and 13383 orders
Bayfront Landfills	WDR
Refineries	13383 orders
Industrial cleanup sites	13267 and 13304 orders
Wetland Restoration Projects	WDRs and WQ Certification

- **Recycled water projects- WDRs, NPDES permits**



NPDES Municipal Stormwater Program

- Supports multi-benefit projects including capture and non-potable use
- Supports long-term multi-benefit implementation



401 Water Quality Certification Program

- **Bay Restoration Regulatory Integration Team**
Facilitate SF Bay shoreline wetland restoration
- **Bay Area Flood Protection Agencies and Coastal Hazards Adaptation Resiliency Group**
Identify climate adaptation needs

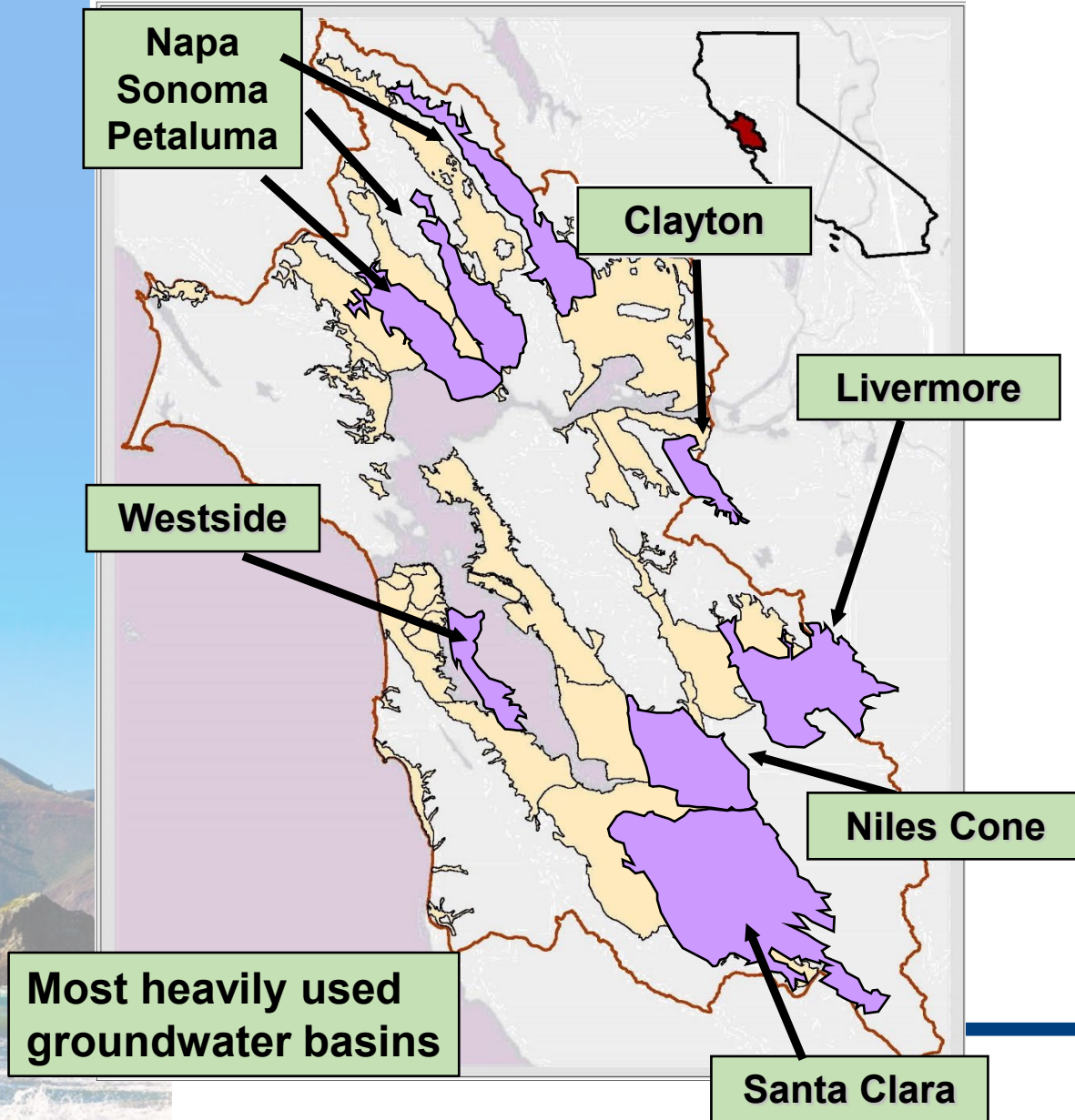


Water Recycling Program

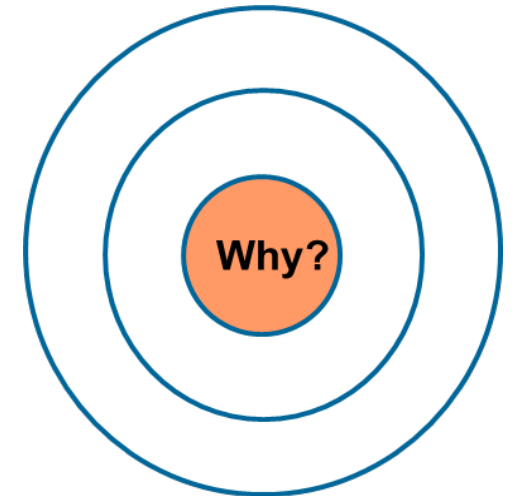
- Supporting office campus and district-scale recycling
- SB 966 shifts permitting authority
- Outreach and coordination needed



Groundwater in SF Bay Region

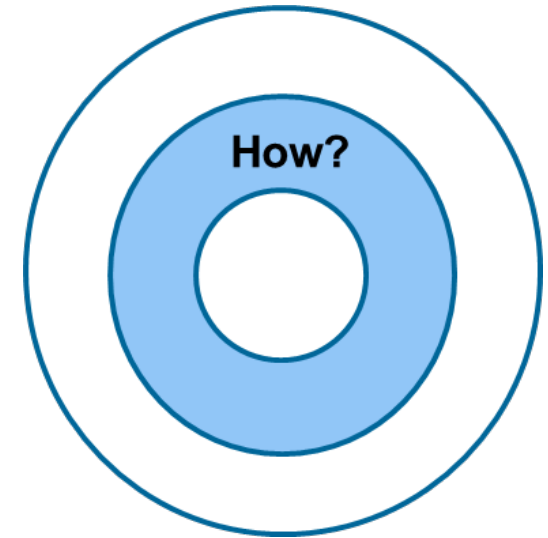


- 35 groundwater basins
- 20% of water supply
- 1,200 supply wells



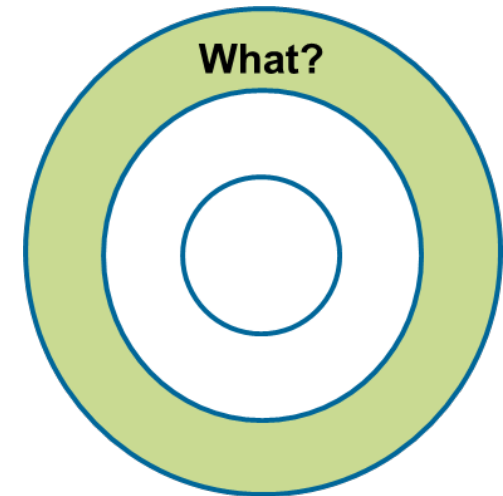
Sustainable Groundwater Management Team

- Engage local agencies
- Evaluate baseline conditions
- Document findings
- Develop recommendations



Sustainable Groundwater Management Team

- Basin Prioritization Framework
- Supply Well Protection
- Aquifer Recharge Permitting



Managed Aquifer Recharge

- Percolation ponds
- Streambed infiltration
- Quarry recharge



Los Gatos Creek Percolation Pond



Streambed Recharge, Alameda
Creek



Quarry Recharge Livermore Valley

Sonoma Valley Pilot Project

- Permitted aquifer storage and recovery pilot project in 2018
- Adequate capacity
- Maintained quality



Sonoma Valley

East Bay MUD

- Permitted aquifer storage and recovery project since 2007
- 1,000,000 gallons/day
- Emergency use



Bayside Groundwater Project

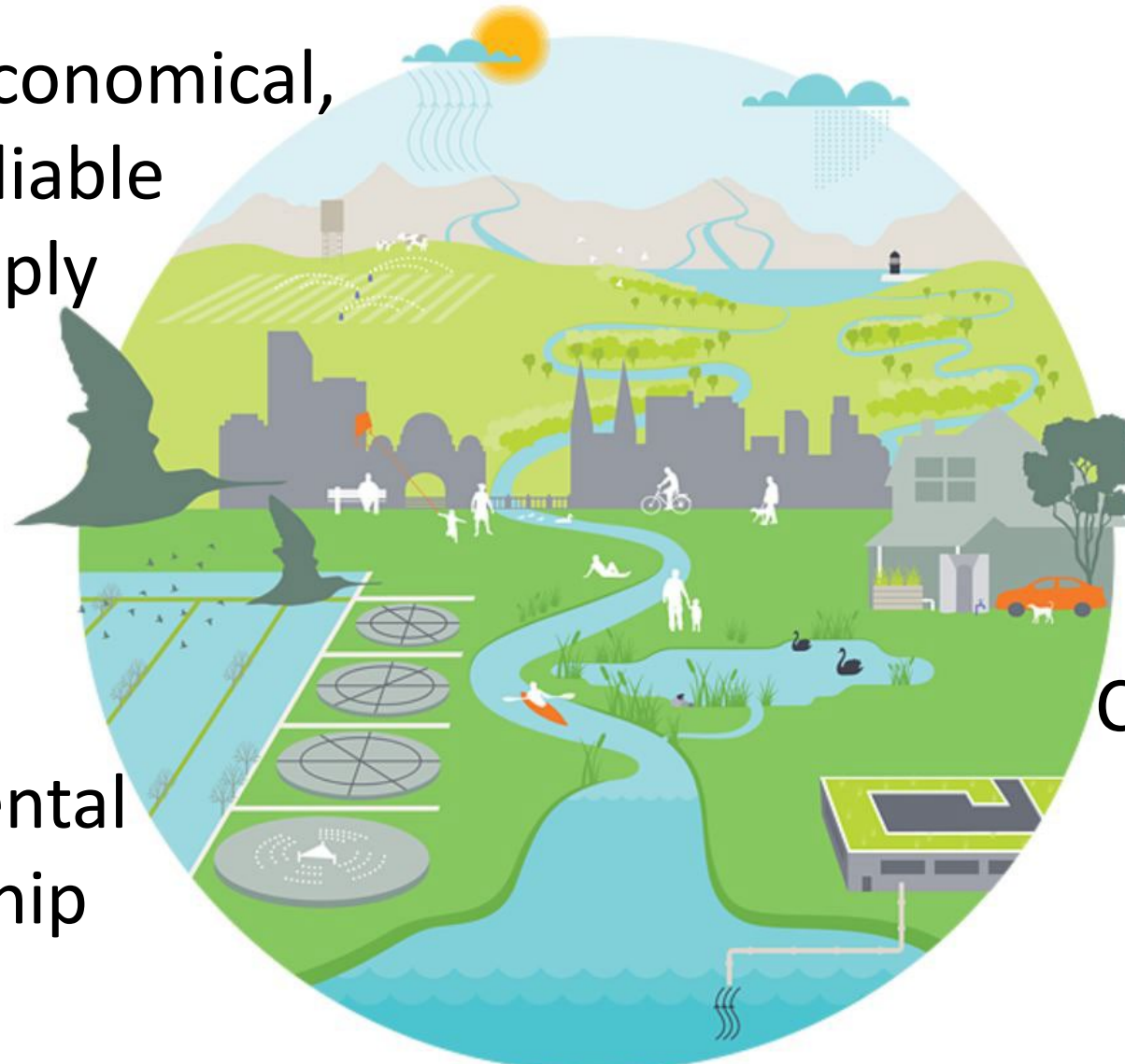
Collaboration is the Key



ONE WATER

Provide economical,
safe, & reliable
water supply

Protection of
public health



Climate change
adaptation &
resiliency

Environmental
stewardship



