



San Miguel
Resource Connection
8335 Centra Ave.
Paso Robles, California 93446
(805) 467-3400
www.DiscoverSanMiguel.com



support us.

San Miguel
Youth
Coalition

05 JUN 30 PM 4:26

AERO VISTA PLACE, SUITE 101
SAN LUIS OBISPO, CA 93401

June 27, 2005

Roger Briggs
California Regional Water Quality Control Board
Central Coast Region
895 Aerovista Place, Suite 101
San Luis Obispo, CA 93401-7906

Re: Support for the Upper Salinas-Las Tablas RCD Supplemental Environmental Project
Agenda Item related to the David Pierson Case No. R3-2005-0024

Dear Mr. Briggs,

The San Miguel Resource Connection is a grassroots nonprofit group established to implement and promote projects for improving community health, increasing public safety and community harmony, removing blight, fostering positive activities for youth, and community planning to create a healthy, sustainable, environment. The San Miguel Resource Connection (SMRC) has partnered with the San Miguel Advisory Committee and San Miguel Community Services District to host community workshops with a Cal Poly Civic Planning Class to create a viable community design plan, which incorporates the Salinas River as a vital asset to the community.

The SMRC strongly supports the Supplemental Environmental Project (SEP) proposed by the Upper Salinas-Las Tablas Resource Conservation District for the Salinas River in San Miguel. The habitat restoration, bank stabilization and environmental education it would provide are in line with the San Miguel Community Design Plan. The plan can be viewed online at: <http://www.discover-sanmiguel.com/design-plans.html>

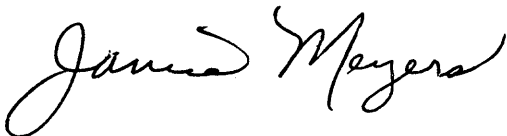
In the fall of 2004, the San Miguel Resource Connection heartily supported the Salinas River Corridor Enhancement Project proposed by the Upper Salinas-Las Tablas Resource Conservation District for funding through the California Resources Agency River Parkways Program. This project included habitat restoration, bank stabilization and bilingual guided river trails in Atascadero, Paso Robles and San Miguel. Funding was approved for Paso Robles and Atascadero; however, funding for San Miguel was declined because the trail loop created issues to be resolved in crossing the railroad tracks adjacent to the river. San Miguel has extremely limited resources. The SEP project would enable San Miguel to move forward in incorporating the Salinas River component of its design plan.

The proposed SEP implements the strategies of the Upper Salinas River Watershed Action Plan submitted by the Upper Salinas-Las Tablas Resource Conservation District to the State Water Resources Control Board. It would address the sediment and nutrient concerns specific to the water quality monitoring site located in San Miguel and provide meaningful citizen outreach and education about the water quality and resource concerns in this area.

San Miguel is located downstream of the confluence of the Huerhuero Creek with the Salinas River and, as a result, is directly impacted by the violation in question. The SMRC believes the project proposed for San Miguel provides a particularly meaningful and relevant means of utilizing the funds to be provided by Mr. Pierson for SEP implementation.

The SMRC board of directors, enthusiastically support the implementation of this project, which will benefit the riparian habitat, water quality and resident's enjoyment of our beloved Salinas River.

Sincerely,

A handwritten signature in cursive script that reads "Janice Meyers". The signature is written in black ink and is positioned above the typed name.

Janice Meyers, Director, on behalf of the San Miguel Resource Connection



Upper Salinas-Las Tablas Resource Conservation District

65 Main Street, Suite 108, Templeton, CA 93465 / (805) 434-0396 ext 4/ fax 434-0284

June 29, 2005

Roger Briggs
Central Coast Regional Water Quality Control Board
895 Aerovista Place, Suite 101
San Luis Obispo, CA 93401

RE: Supplemental Environmental Project Description
David Pierson Case No. R3-2005-0024

Dear Mr. Briggs,

Please find enclosed a description of the four-part supplemental environmental project proposed by the Upper Salinas-Las Tablas Resource Conservation District to address non-point source water pollution in northern San Luis Obispo County. This proposal was developed through meetings with RWQCB staff and a representative for Mr. Dave Pearson in order to improve water quality and reduce erosion. The four component projects consist of the following:

- Erosion control and riparian restoration along the Salinas River in San Miguel
- Erosion control within East-West Ranch in Cambria
- Facilitation of landowner watershed working group meetings in the north county
- Conservation education and outreach through local public access television

It was brought to our attention this morning that our partner in this project, the California Conservation Corps, are increasing charge rates for corps members. Due these increases, the cost estimates for our proposed projects are higher than we first estimated and higher than the amount of the proposed RWQCB fine. We are still in negotiations with Mr. Pierson's representatives to work out the details and it is possible that one or more of the smaller projects could be deleted or modified to reduce the costs.

We will be at the RWQCB meeting on July 8, 2005 to discuss the proposed projects. Please feel free to contact us as at 434-0396 ext. 4 should you have any questions.

Sincerely,

Donald J. Funk
Executive Director

Attachment

895 AEROVISTA PLACE, SUITE 101
SAN LUIS OBISPO, CA 93401

05 JUN 29 PM 12:17

Agriculture Water Quality

June 23, 2005

Roger Briggs
California Regional Water Quality Control Board
Central Coast Region
895 Aerovista Place, Suite 101
San Luis Obispo, CA 93401-7906

095 AEROVISTA PLACE, SUITE 101
SAN LUIS OBISPO, CA 93401
05 JUN 29 PM 12:20

Dear Mr. Briggs,

It is my pleasure to write a letter on behalf of the Agriculture Water Quality Alliance (AWQA) in support of the Supplemental Environmental Project proposed by the Upper-Salinas Las-Tablas Resource Conservation District (US-LT RCD). The US-LT RCD will be providing a great service to the community and region through their work on bank stabilization, environmental education, and Watershed Working Group coordination. AWQA has been working with land-owners in a six county region to reduce sediments, nutrients and pesticides from draining to the Monterey Bay National Marine Sanctuary (MBMNS). The Salinas River watershed is the largest watershed draining to the MBMNS. Reducing sediment load from bank erosion is very important in the processes of improving water quality in the Salinas River.

The cornerstone of the AWQA program is the willing participation of farmers to identify water quality management concerns on their property and their ability to implement on-the-ground management practices. Watershed Working Groups (WWG) through out the region provide growers with a discussion forum and access to technical assistance. There are currently four WWG in San Luis Obispo County and more areas where they can be started. The willingness of US-LT RCD to take over the coordination of these groups and work on establishing new groups is a great benefit to the efforts throughout the region. With out the US-LT RCD the San Luis Obispo County WWG will most likely not have a leader.

The US-LT RCD has been a main partner in AWQA for many years and does great work. We urge your support of this important effort. Please contact me at 831-647-4219 with any questions.

Sincerely,



BRIDGET DOBROWSKI
MONTEREY BAY NATIONAL MARINE
SANCTUARY

SAN MIGUEL ADVISORY COMMITTEE

June 27, 2005

Roger Briggs
California Regional Water Quality Control Board
Central Coast Region
895 Aerovista Place, Suite 101
San Luis Obispo, CA 93401-7906

Re: Support for the Upper Salinas-Las Tablas RCD Supplemental Environmental Project
Agenda Item related to the David Pierson Case No. R3-2005-0024

Dear Mr. Briggs,

The San Miguel Advisory Committee was established to provide local input in the planning for the San Miguel community and surrounding area. This Committee strongly supports the Supplemental Environmental Project (SEP) proposed by the Upper Salinas-Las Tablas Resource Conservation District for the Salinas River in San Miguel. The habitat restoration, bank stabilization and environmental education it would provide are demonstrably in line with the goals of the community.

In the fall of 2004, the San Miguel Advisory Committee heartily supported the Salinas River Corridor Enhancement Project proposed by the Upper Salinas-Las Tablas Resource Conservation District for funding through the California Resources Agency River Parkways Program. This project included habitat restoration, bank stabilization and bilingual guided river trails in Atascadero, Paso Robles and San Miguel. Funding was approved for Paso Robles and Atascadero and project implementation has begun. However, funding for San Miguel was declined because of difficulty completing a meaningful trail loop around the railroad tracks adjacent to the river. Despite this disappointment, our community has continued to discuss and pursue alternative opportunities to implement Salinas River improvements and conservation measures in San Miguel. The SEP proposed would enable San Miguel to achieve this goal.

The proposed SEP implements the strategies of the Upper Salinas River Watershed Action Plan submitted by the Upper Salinas-Las Tablas Resource Conservation District to the State Water Resources Control Board. It would address the sediment and nutrient concerns specific to the water quality monitoring site located in San Miguel and provide meaningful citizen outreach and education about the water quality and resource concerns in this area.

San Miguel is located downstream of the confluence of the Huerhuero Creek with the Salinas River and, as a result, is directly impacted by the violation in question. The project proposed for San Miguel thus provides a particularly meaningful and relevant means of employing the funds to be provided by Mr. Pierson for SEP implementation.

We enthusiastically support the implementation of this project, which will benefit the riparian habitat, water quality and citizen awareness in San Miguel.

Sincerely,



Bill Nielson, Chair, on behalf of the San Miguel Advisory Committee



Post Office Box 1664 · Cambria · California 93428 · 805.927.2856 · www.northcoastswap.org

June 28, 2005

Roger Briggs
Regional Water Quality Control Board

Dear Mr. Briggs,

North Coast Small Wilderness Area Preservation (NCSWAP) would like to express our support for the Resource Conservation District (US-LT RCD) proposal to address some of the severe bluff erosion problems on the East West Ranch in Cambria. A 501(c) (3) non profit organization, NCSWAP is the conservation easement holder on the property and organizes volunteers to carry out projects that will enhance the conservation values there.

The property was purchased in November of 2000 as open space with public access. The main trail is the historic Bluff Trail which has been used by the public since it was part of the Fiscalini Ranch holdings. This 1.2 mile trail crosses several wetland gully areas and runs close to some eroded bluff areas. During the rainy season these areas create muddy runoff causing more damage. The trail will be improved by March of 2006, but the project will not include improvements for the erosion problems on the ranch.

Although funds were provided for the purchase of the property, there were no funds given for management and maintenance. The Cambria Community Services District provides temporary management and only minimal maintenance due to budget constraints. If funded, the project proposed by the US-LT RCD to implement riparian vegetation restoration and reduce erosion would provide the design and planning expertise and the skills of the California Conservation Corps to help enhance this publicly owned open space. NCSWAP can provide the community volunteers.

The RWQCB can play a major role in enhancing the unique environment of the East West Ranch and protecting it's riparian areas by using some mitigation funding on this worthy project.

Sincerely,

Jo Ellen Butler
Executive Director
NCSWAP

Supplemental Environmental Project Description Addressing Nonpoint Source Water Pollution

**Presented to the Regional Water Quality Control Board
Reference Case No. R#-2005-0024, David Pearson
Hearing of July 8, 2005**

THE SUPPLEMENTAL ENVIRONMENTAL PROJECT DESCRIPTION

The proposed Supplemental Environmental Project is a four-pronged approach to reduce erosion and improve water quality within our jurisdictional area. The first element of the project is an erosion control project along the Salinas River, downstream of the Pierson property, within urban and agricultural areas near the community of San Miguel. The second element is an erosion control project within East-West Ranch in Cambria. The third element is the reinitiation of landowner working groups in San Luis Obispo and southeastern Monterey Counties. The fourth element is a television outreach program identifying the need of the public to be good stewards of the land.

Overall Goal of the Supplemental Environmental Project:

- Implement nonpoint source pollution strategies within the planning area of the US-LT RCD.

CONSISTENCY OF THE SUPPLEMENTAL ENVIRONMENTAL PROJECT WITH THE UPPER SALINAS RIVER WATERSHED ACTION PLAN

The Upper Salinas-Las Tablas Resource Conservation District (US-LT RCD) has been instrumental in applying erosion control measures throughout San Luis Obispo and southeastern Monterey Counties. In 2004, the US-LT RCD completed the *Upper Salinas River Watershed Action Plan*, a watershed management plan prepared for the State Water Resources Control Board (SWRCB) covering the 2,000 square mile region in San Luis Obispo and Monterey Counties. The WAP was accepted by the SWRCB in July 2004. This plan now stands as the primary planning tool for resource protection in the Upper Salinas Watershed.

The US-LT RCD was formed by landowner initiative in 1950 to work with farmers and ranchers to reduce soil erosion and improve water quality. During the past 55 years, the US-LT RCD has established itself as one of most effective community-based organizations in the Central Coast in restoring riparian habitat, reducing soil erosion and improving water quality. The US-LT RCD has a very active water quality monitoring program, guided by the SWRCB approved QAPP.

The watersheds within the US-LT RCD comprise approximately 1.5 million acres (2,300 square miles) of the Central Coast, including 1,365,000 acres in San Luis Obispo County (about three-quarters of the county area) and 138,000 acres within Monterey County. The district jurisdiction also encompasses the fragile Carrizo Plain in southeastern San Luis Obispo County. The coast of northern San Luis Obispo County and one-half of the 4,000-square-mile Salinas River Watershed is within the US-LT RCD boundary.



Many of the banks along Salinas River in San Miguel have lost protective riparian vegetation.

Element 1, Salinas River-San Miguel Area Project: The US-LT RCD will work with the community of San Miguel and the California Conservation Corps to implement riparian restoration and bioengineered bank stabilization projects along the banks of the Salinas River. The US-LT RCD's water quality monitoring data has demonstrated that sediment loads are particularly high in San Miguel. The restoration projects will be designed to include community service opportunities, such as tree plantings, to provide needed public outreach and education about local water quality concerns and the importance of riparian habitat. This site is located downstream of Mr. David Pierson's property in Creston and has been impacted by the sediment from the subject violation site.

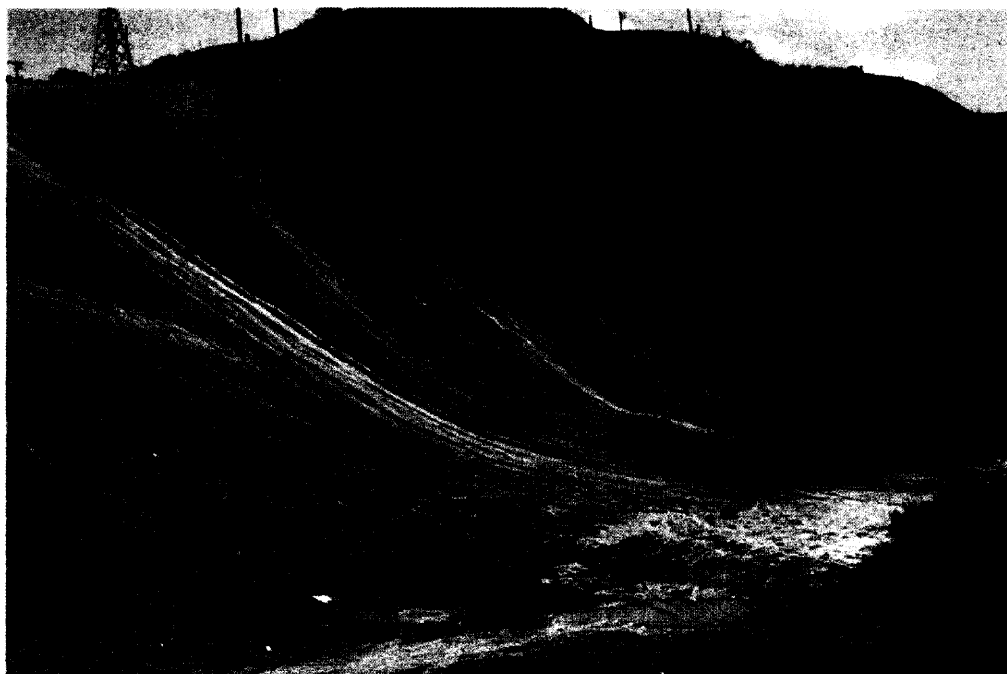
The Project's restoration design will be guided by the *Upper Salinas River Watershed Action Plan, July 2004* (WAP). It is endorsed by the local community groups including the San Miguel Community Advisory Council and the San Miguel Resource Connection. In the fall of 2004, the US-LT RCD, in cooperation with the Community, the CCC, and the Planning and Conservation League Foundation created a concept project for the enhancement of four miles of river riparian restoration. If funded, this element of the SEP will implement a part of that dream.

Restoration of riparian vegetation and wildlife habitat enhancement will occur in areas of erosion along the riverbank. The vegetation enhancement will use bioengineering and holistic measures to reduce channel erosion and sediment transportation. Noxious and invasive weeds will also be removed. Trash dumped in the river near the project site will be removed.

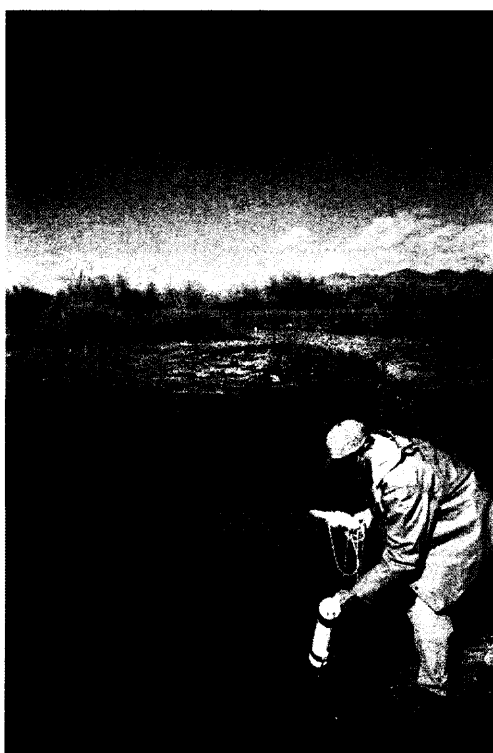
- US-LT RCD will design and, with the assistance of the CCC, will implement riparian vegetation restoration for all of these segments of the river and establish workable methods to improve habitat and reduce erosion (reducing sediment loads). Design, approval, and construction are proposed over a three year period. The US-LT RCD will monitor the water quality in the Salinas River during and after the project..

Total Area of Riparian and River Bank Restoration: Approximately 1,000 lineal feet of channel.

Total Cost Estimated for Element 1: \$88,100



Riparian planting will address bank erosion along Salinas River in San Miguel



Upper Salinas-Las Tablas RCD conducts monthly water quality monitoring of the Salinas River in San Miguel for sediments and turbidity.

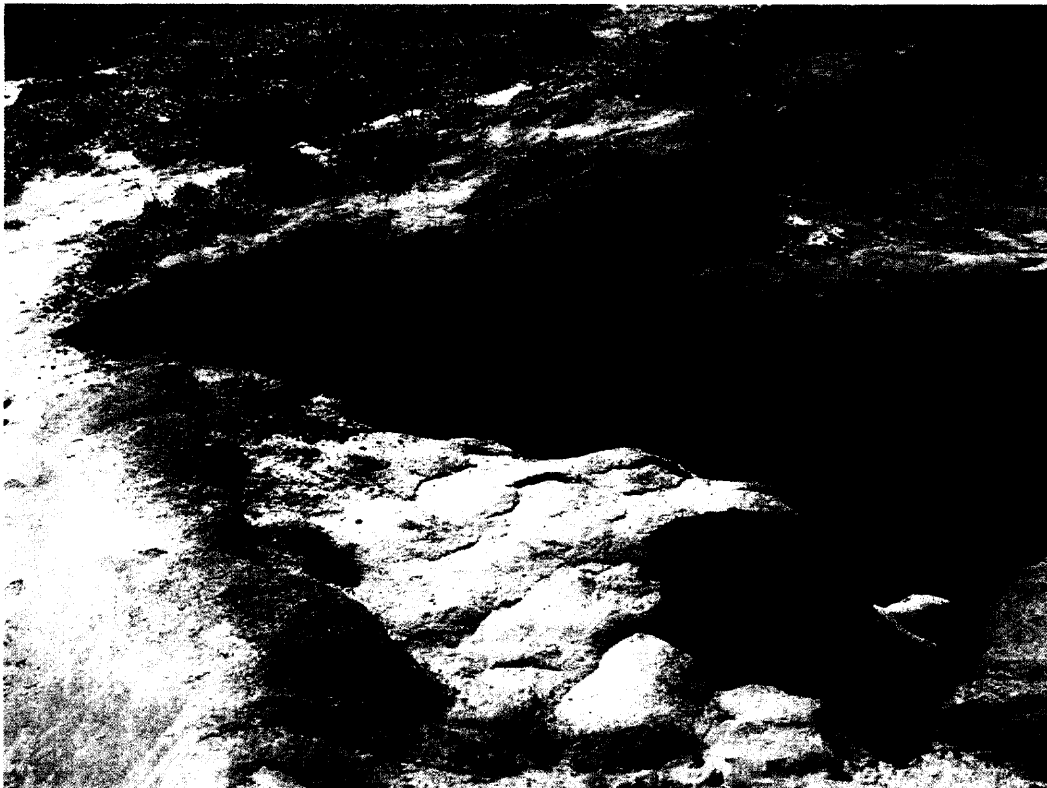
Element 2, East-West Ranch and Santa Rosa Creek Project Element: The East-West Ranch was purchased over four years ago to protect resources in the Cambria area and prevent proposed development of the property. The US-LT RCD will work with North Coast Small Wilderness Area Preservation (SWAP) and the California Conservation Corps (CCC) to implement beneficial management practices on the East-West Ranch in Cambria. These practices will address severe erosion of gullies near the cliffs along the Pacific Ocean in the southernmost boundary of the Monterey Bay National Marine Sanctuary. Using bioengineering methodology, the US-LT RCD will address the more severe cases of gully erosion. The vegetation enhancement will use bioengineering and holistic measures to reduce future gully erosion and sediment transportation. Noxious and invasive weeds will also be removed within the improvement area.

This project is a small part of a larger cooperative effort for erosion control and environmental enhancement planned by SWAP and the US-LT RCD for the East-West Ranch. There are numerous erosion problems on the ranch within several separate watersheds, including Santa Rosa Creek, which meanders through the northern section of the Ranch.

- US-LT RCD will design and, with the assistance of the CCC and community volunteers, will implement riparian vegetation restoration and reduce erosion (reducing sediment loads). Design, approval, and construction are proposed over a three year period.

Total Area of Riparian Restoration: Approximately 150 lineal feet of gully bank

Total Cost Estimated for Element 1: \$16,800



Gully and channel erosion will be addressed at the East-West Ranch in Cambria.

Element 3, Landowner Working Groups Element: Strategy WQPP-16 of the Monterey Bay National Marine Sanctuary – Administrative Draft Management Plan calls for the establishment of Watershed-level agricultural landowner working groups (LWG). These industry networks will take the lead in organizing and working with their own members to establish joint projects for nonpoint source management. Activities include identifying priority target regions for joint projects, conducting outreach on nonpoint issues, assisting growers and ranchers in developing and carrying out voluntary site-specific management plans.

The Upper Salinas River Watershed Action Plan strategies call for the development of better lines of communication between stakeholder groups by the creation of landowner working groups. The US-LT RCD helped form three LWG's within the County. Unfortunately, currently there is no funding to continue working groups in San Luis Obispo County.

If funded, the US-LT RCD will facilitate four meetings of LWG's to provide education, stimulate discussion and watershed planning and encourage landowner collaboration to reduce soil erosion and improve water quality. This is part of a larger effort planned by the US-LT RCD, NRCS, the MBNMS for the San Luis Obispo County region.

Total Number of LWG meetings including contacts, coordination and facilitation: Four

Landowners Involved: Estimated 30

Total Cost Estimated for Element 1: \$8,600



The US-LT RCD will facilitate Landowner Working Group meetings. In above photo, landowners meet with public agency representatives to discuss management measures.

Element 4, Outreach-Education Water Quality: The US-LT RCD will use \$3,000 to supplement an existing Public Education Grant (PEG) to create an educational video about resource conservation for broadcast on local, public access television. The video will take a watershed-based approach to conservation, focusing primarily on the Upper Salinas River watershed, in order to raise public awareness about significant resource concerns and conservation initiatives in the region. The video will address riparian restoration, streambank stabilization, water quality monitoring, upland resource management and erosion control.

The US-LT RCD is currently preparing a video program. We have approximately \$18,000 funded and need an additional \$1,600. We will add educational outreach for improving water quality with the added funding.

Television Outreach: Public Access Television program of approximately 30 minute duration.

Total Cost Estimated for Element 1: \$1,600 supplement to existing US-LT RCD funding.



The 2004 Central California Agricultural Symposium, coordinated by the US-LT RCD, brought participants together in Paso Robles to discuss holistic measures to reduce soil erosion and improve water quality.