



California Regional Water Quality Control Board

Central Coast Region



Terry Tamminen
Secretary for
Environmental
Protection

Internet Address: <http://www.waterboards.ca.gov/centralcoast>
895 Aerovista Place, Suite 101, San Luis Obispo, California 93401-7906
Phone (805) 549-3147 • FAX (805) 543-0397

Arnold Schwarzenegger
Governor

December 21, 2004

Steve Hammack
City of Santa Cruz
Department of Parks and Recreation
323 Church Street
Santa Cruz, CA 95060-3811

NOTICE OF VIOLATION – DE LAVEAGA GOLF COURSE, SANTA CRUZ, SANTA CRUZ COUNTY; WDID# 3 44C330064

Mr. Hammack:

On December 8, 2004, Regional Water Quality Control Board (Regional Board) staff met with Mr. Miles Hicks (of the City of Santa Cruz) and inspected De LaVeaga Golf Course in Santa Cruz. Mr. Lee Bilberry (of Golf Course Builders, Inc.) was present for part of the inspection. The site was in violation of the statewide *National Pollutant Discharge Elimination System General Permit for Discharges of Storm Water Runoff Associated with Construction Activities* (Permit).

It was raining during the inspection, and Regional Board staff observed and photographed multiple discharges of sediment-laden water throughout the site, overwhelmed sediment controls, improperly installed sediment controls, and widespread erosion. There were no erosion controls implemented on site. The Permit requires an effective combination of erosion control and sediment control measures. Regional Board staff has serious concerns regarding onsite erosion and sediment discharges due to site conditions during inspection, observed sediment discharges, lack of erosion controls, and the site's proximity to Arana Gulch and Branceforte Creek.

Additionally, Regional Board staff observed an oily sheen in storm water runoff near the construction trailer and found two partly-filled 5-gallon gasoline tanks exposed in the rain and without secondary containment.

During the inspection, staff also noted Storm Water Pollution Prevention Plan (SWPPP) deficiencies, including no signed certification, no documented amendments, and no training information. Regional Board staff did not do a thorough review of the site's SWPPP to determine if there were additional deficiencies. Site inspection records were not available for staff to review; Mr. Hicks indicated he kept an inspection log at his office.

California Environmental Protection Agency



Recycled Paper

You are required to submit the following information by **January 27, 2004**:

1. Corrective Action and Cleanup Efforts – A written report itemizing and describing corrective actions and cleanup efforts implemented since Regional Board staff's inspection. If possible, include site photographs or other evidence to substantiate your claims.
2. Inspection Records – Copies of storm water inspection records from construction commencement, through December 17, 2004. The submittal shall be organized chronologically by inspection date, pages shall be numbered, and a table of contents shall be included identifying dates and page numbers corresponding to each record.
3. Monitoring and Reporting Program – A copy of the site's monitoring and reporting program is required. The monitoring and reporting program should be in compliance with Permit requirements.
4. Storm Water Pollution Prevention Plan – A copy of the updated SWPPP and amendments, including a site map is required. The SWPPP should be amended to incorporate any new or additional best management practices that have been and will be implemented, the implementation schedule, and any additional monitoring. The site map should show the entire project area, identify areas of construction, and label the various areas of construction (such as by greens complex and tee numbers). Construction staging areas and construction stockpile areas should also be identified.

The above numbered items are required pursuant to Permit Section C, Standard Provision 7, "Duty to Provide Information," and are required to determine compliance.

California Water Code Section 13385 specifies the Regional Board can impose civil liability for Permit violations, in the amount of up to ten thousand dollars (\$10,000) for each day the violation occurs. The site should be in full compliance with the Permit to avoid additional liability.

If you have questions regarding this matter, please call Kimberly Gonzalez at (805) 549-3150.

Sincerely,



for
Roger W. Briggs
Executive Officer

Encl: December 8, 2004 Photos

cc: Miles Hicks, De LaVeaga Golf Course, 401 Upper Park Road, Santa Cruz, CA 95060
Scott Monn, Golf Course Builders International, 1109 North Palmetto Circle, Eustis, FL 32726

CKG\\S:\Storm Water\Construction\Santa Cruz Co\330064 De LaVeaga Golf2004.12 Delaveaga NOV.doc
File: Storm Water - 3 44C330064
Task: Enforcement

California Environmental Protection Agency

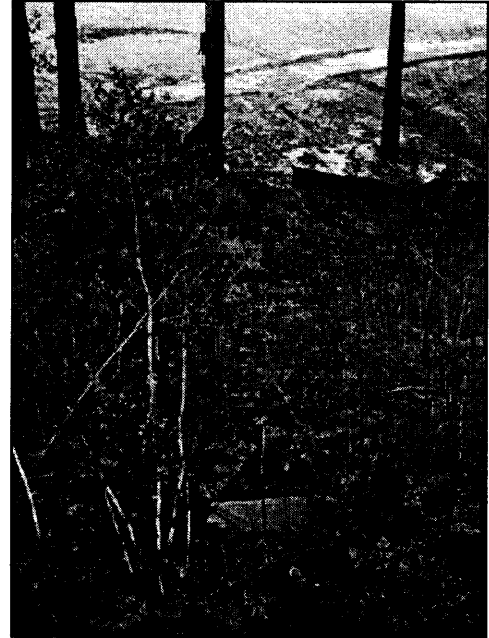


Recycled Paper

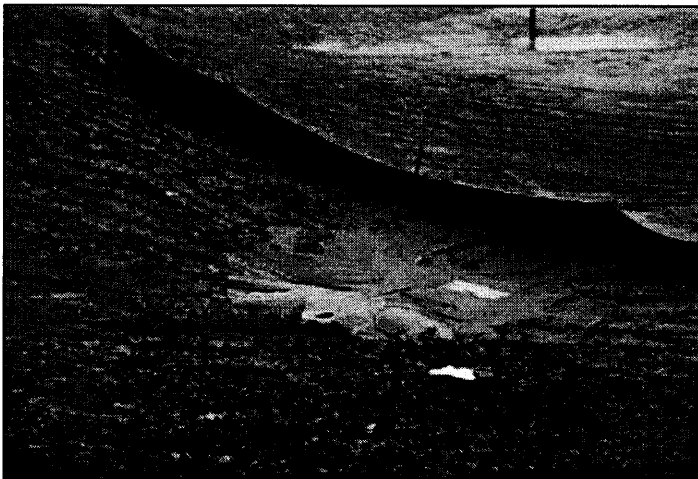
Inspection Photos
De LaVeaga Golf Course, Santa Cruz
December 8, 2004



Above: Parking lot area with unprotected stockpiles and no sediment controls.



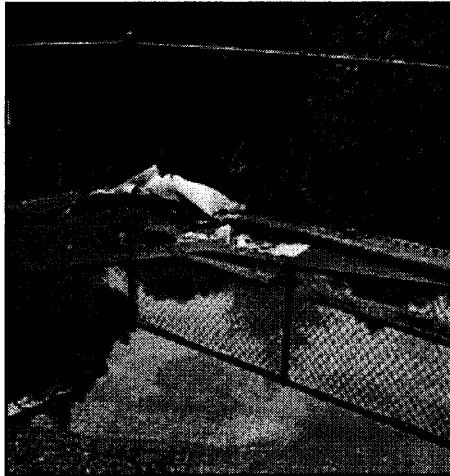
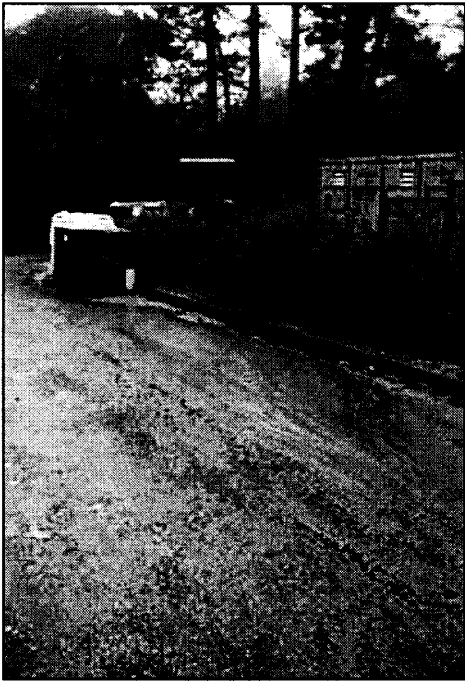
Right: Discharge of sediment-laden water from parking lot to surface waters.



Above: Erosion at Greens Complex 18 and storm water drainage into pipe. No erosion controls.



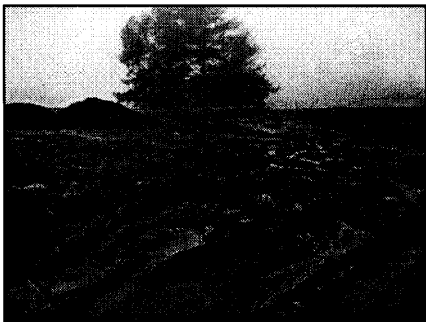
Above Right: Pipe discharge of sediment-laden water over collapsed silt fence and into surface waters.

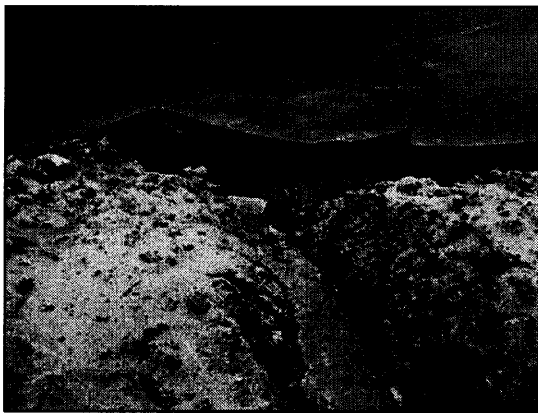
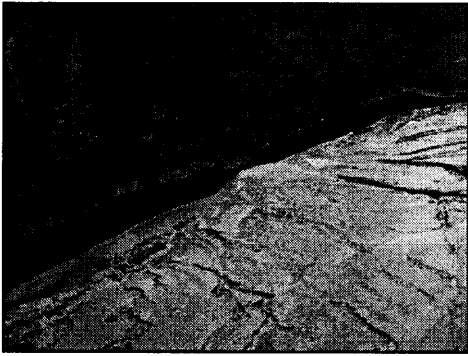


Left: Sediment in streets near construction staging area.

Above and Above Right: Oily sheen on runoff in construction staging area and uncovered partly-full gasoline containers.

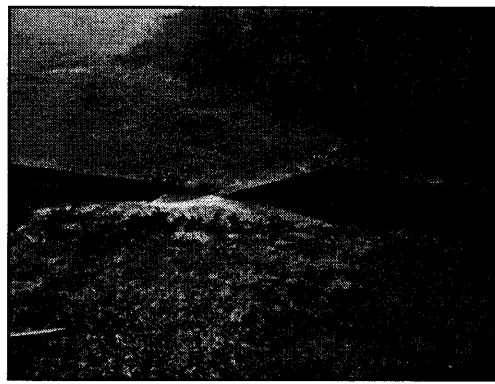
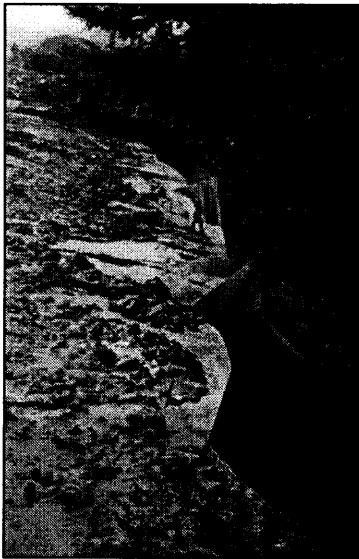
Below and Right: Greens Complex 1 area with no erosion control, unprotected stock piles, and failing sediment control. Discharge of sediment-laden water to surface waters.



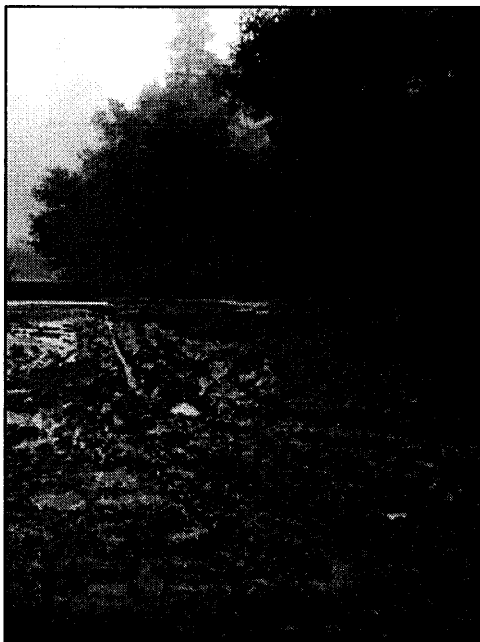
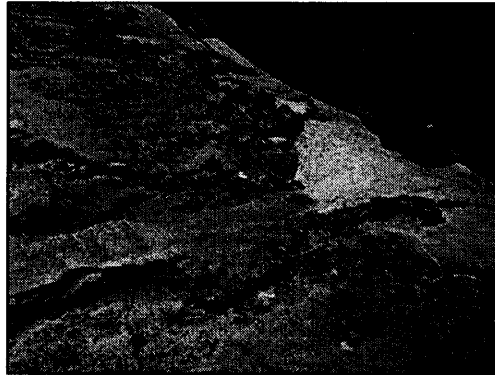


This Page: Sediment overwhelming silt fences in Greens Complex 5 area. Widespread erosion and no erosion controls in disturbed areas. Discharges of sediment to surface waters.





Above and Right: Sediment overwhelming silt fences at various tees, all resulting in discharge of sediment-laden water to surface waters.



Left: Tee area with no erosion controls.

Right: Tee area with no erosion or sediment controls. Sediment buried street curb and covers the street.

