

CALIFORNIA REGIONAL WATER QUALITY CONTROL BOARD  
CENTRAL COAST REGION  
1102-A Laurel Lane  
San Luis Obispo, California 93401

ORDER NO. 89-83

WASTE DISCHARGE REQUIREMENTS  
FOR  
HILLSDALE ROCK COMPANY, INC.,  
SAN JUAN BAUTISTA SAND AND GRAVEL PLANT,  
SAN BENITO COUNTY

The California Regional Water Quality Control Board, Central Coast Region (hereafter Board), finds that:

1. Hillsdale Rock Company, Inc., submitted a Report of Waste Discharge dated February 14, 1989.
2. Hillsdale Rock Company, Inc. (hereafter Discharger), P.O. Box 5296, San Jose, CA, 95150, owns and operates an open-pit sand and gravel quarry and processing facility near San Juan Bautista where raw material is dry-quarried, screened, and washed. The facility is located adjacent to San Benito River approximately 2 1/2 miles north-northwest of the City of San Juan Bautista (T10S, R2W, Sections 17 and 20, MD B&M), as shown on Attachment "A" of this Order.
3. Wastewater from the plant consists of sand and gravel washwater pumped to a large pond southeast of the processing plant. Up to 384,000 gallons-per-day of washwater is settled and recirculated as shown on Attachment "A." Make-up water from an on-site well is added to a separate supply pond as needed.
4. Storm runoff from the plant site drains to San Benito River from a ditch which traverses the plant site. Because the plant site is flat, relatively small (about 2 acres), and contributes minor amounts of sediments, impacts on water quality from this source is negligible and not regulated by this order.
5. The discharge has been governed by waste discharge requirements Order No. 84-32 (NPDES Permit No. CA0006971), adopted by the Board May 18, 1984, which conditionally authorized discharge to San Benito River. Order No. 84-32 expires May 1, 1989. The Board has regulated discharge from this facility since July 8, 1971.

6. The disposal pond is located on sandy soils to an unknown depth. Depth to ground water onsite is 100 feet.
7. The Water Quality Control Plan, Central Coastal Basin, (Basin Plan) was adopted by the Board on March 14, 1975, and approved by the State Board on March 20, 1975. The Basin Plan incorporates statewide plans and policies by reference and contains a strategy for protecting beneficial uses of State waters.
8. Existing beneficial uses of San Benito River, as listed in the Basin Plan, are:
  - a. Agricultural supply;
  - b. Industrial service supply;
  - c. Ground water recharge;
  - d. Water contact recreation;
  - e. Non-contact water recreation;
  - f. Wildlife habitat;
  - g. Warm freshwater habitat; and,
  - h. Fish spawning.
9. Present and anticipated beneficial uses of ground water in the vicinity of the discharge include: domestic water supply, agricultural water supply, and industrial water supply.
10. Sand and gravel washwaters are classified as Group C mining wastes in accordance with criteria of the California Code of Regulations, Title 23, Subchapter 15, Article 7.
11. Discharge of waste is a privilege, not a right, and authorization to discharge is conditional upon the discharge complying with provisions of Division 7 of the California Water Code and any more stringent effluent limitations necessary to implement water quality control plans, to protect beneficial uses, and to prevent nuisance. Compliance with this Order should assure this and mitigate any potential adverse changes in water quality due to the discharge.
12. These waste discharge requirements are for an existing facility and are exempt from the provisions of the California Environmental Quality Act (Public Resources Code, Section 21000, et seq.) in accordance with Section 15301, Chapter 3, Title 14, of the California Code of Regulations.
13. On March 28, 1989, the Board notified the Discharger and interested agencies and persons of its intent to reissue waste discharge requirements for the discharge, provided them with an opportunity to submit their written views and recommendations, and scheduled a public hearing.

14. After considering all comments pertaining to this discharge during a public hearing on June 9, 1989, this Order was found consistent with the above findings.

IT IS HEREBY ORDERED, pursuant to authority in Section 13263 of the California Water Code, Hillsdale Rock Company, Inc., its agents, successors, and assigns, may discharge waste from its San Juan Bautista plant providing it complies with the following:

(Note: other prohibitions and conditions, definitions, and the method of determining compliance are contained in the attached "Standard Provisions and Reporting Requirements for Waste Discharge Requirements" dated January, 1984. Applicable paragraphs are referenced in paragraph D.3. of this Order.)

**A. Discharge Prohibitions**

1. Discharge of any wastes, other than sand and gravel washwater, is prohibited.
2. Bypass of the disposal pond and discharge of wastes directly to the San Benito River is prohibited.

**B. Discharge Specifications**

1. The daily volume of wastewater discharged shall not exceed an amount needed to maintain the disposal pond operational as shown on Attachment "A."
2. Effluent discharged to the disposal pond shall not have a pH less than 6.5 or greater than 8.4.
3. Surface drainage shall be excluded from the disposal pond.
4. Freeboard shall exceed two feet in the disposal pond.
5. Gravel extraction equipment shall be excluded from contact with flowing water in the San Benito River.
6. The Discharger shall have sufficient land available for wastewater disposal to contain all process waters.

**C. Ground Water Limitations**

1. The discharge shall not cause a significant increase of mineral constituent concentrations in underlying groundwaters, as determined by comparison of samples collected from wells located upgradient and downgradient of the disposal area.
2. The discharge shall not cause concentrations of chemicals and radionuclides in groundwater to exceed limits set forth in Title 22, Chapter 15, Articles 4 and 5 of the California Code of Regulations.

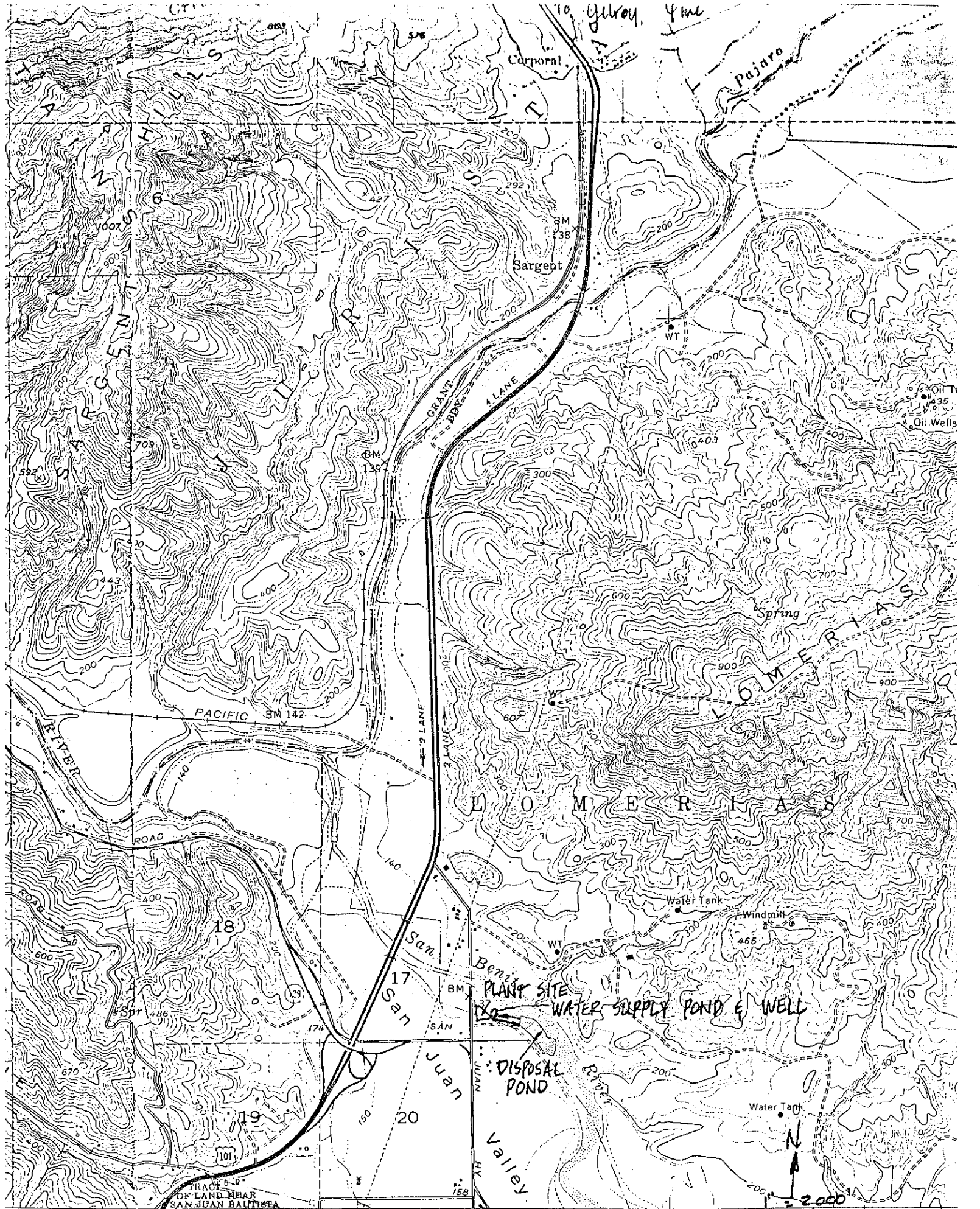
**D. Provisions**

1. Order No. 84-32, "Waste Discharge Requirements for Hillsdale Rock Company, Inc., San Juan Bautista Plant," adopted by the Board on May 18, 1984, is hereby rescinded.
2. Discharger shall comply with "Monitoring and Reporting Program No. 89-83," as specified by the Executive Officer.
3. Discharger shall comply with all items of the attached "Standard Provisions and Reporting Requirements for Waste Discharge Requirements" dated January, 1984, except items A.5, A.13, A.15, A.17, and C.16.
4. Wastewater disposal ponds shall be protected against overflow, flooding, or washout as a result of a 10-year frequency flood or 10-year, 24-hour storm.
5. Pursuant to Title 23, Chapter 3, Subchapter 9, of the California Code of Regulations, the Discharger must submit a written report to the Executive Officer not later than December 1, 1993, addressing:
  - a. Whether there will be changes in the continuity, character, location, or volume of the discharge; and,
  - b. Whether, in their opinion, there is any portion of the Order that is incorrect, obsolete, or otherwise in need of revision.

I, WILLIAM R. LEONARD, Executive Officer, do hereby certify the foregoing is a full, true, and correct copy of an Order adopted by the California Regional Water Quality Control Board, Central Coast Region, on June 9, 1989.

  
Executive Officer

sm5:89-83.WDR



0.9 MI. TO CALIF. 56 R. 4 E. (SAN JUAN BAUTISTA) 1657 SE

SAN JUAN BAUTISTA 2.5 MI. 32'30" HOLLISTER 11 MI.

1:24,000 FEET (4)

SCALE 1:24,000

ATTACHMENT "A"  
UNION PACIFIC ROCK COMPANY

CALIFORNIA REGIONAL WATER QUALITY CONTROL BOARD  
CENTRAL COAST REGION

MONITORING AND REPORTING PROGRAM NO. 89-83  
FOR  
HILLSDALE ROCK COMPANY, INC.  
SAN JUAN BAUTISTA PLANT  
SAN BENITO COUNTY

EFFLUENT MONITORING

A sampling station shall be established at the point of discharge to the disposal pond shown on Attachment "A." Representative grab samples shall be collected and analyzed according to the following schedule:

<u>Constituent</u>	<u>Units</u>	<u>Minimum Frequency of Analysis</u>
Net Average Daily Flow (Amount infiltrated into the ground)	gals/day	Estimated Monthly
pH	pH Units	Semi-Annually (Dec. and June)

POND AND FREEBOARD MONITORING

The disposal pond dikes shall be inspected at least weekly. A staff gauge shall be set in the disposal pond to measure pond freeboard weekly.

IMPLEMENTATION

The Discharger shall implement this monitoring program beginning July 1, 1989.

REPORTING

Semi-annual monitoring reports containing information collected during the specified monitoring period shall be submitted by the dates in the following schedule.

<u>Monitoring Period</u>	<u>Report Due Date</u>
January 1 - June 1	July 20
July 1 - December 31	January 20

In reporting monitoring data, the discharger shall submit all data on the form prescribed by the Executive Officer. When no discharge occurs, a statement to that effect may be sent in lieu of the report.

The report submitted by July 20 shall certify that all necessary measures (cleaning disposal pond, etc.) are in proper condition to comply with the terms of this Order.

ORDERED BY *William A. Lovelace*  
Executive Officer

June 9, 1989  
Date

sm5:89-83.MRP