

Temperature Monitoring

Turbidity Monitoring

Photo Monitoring

MAP 1 of 3

WATER QUALITY MONITORING LOCATIONS  
 THP 1-06-0800 SCR  
 Lands of RMC Pacific Materials, Inc.

VISUAL INSPECTION ROUTE - - - -

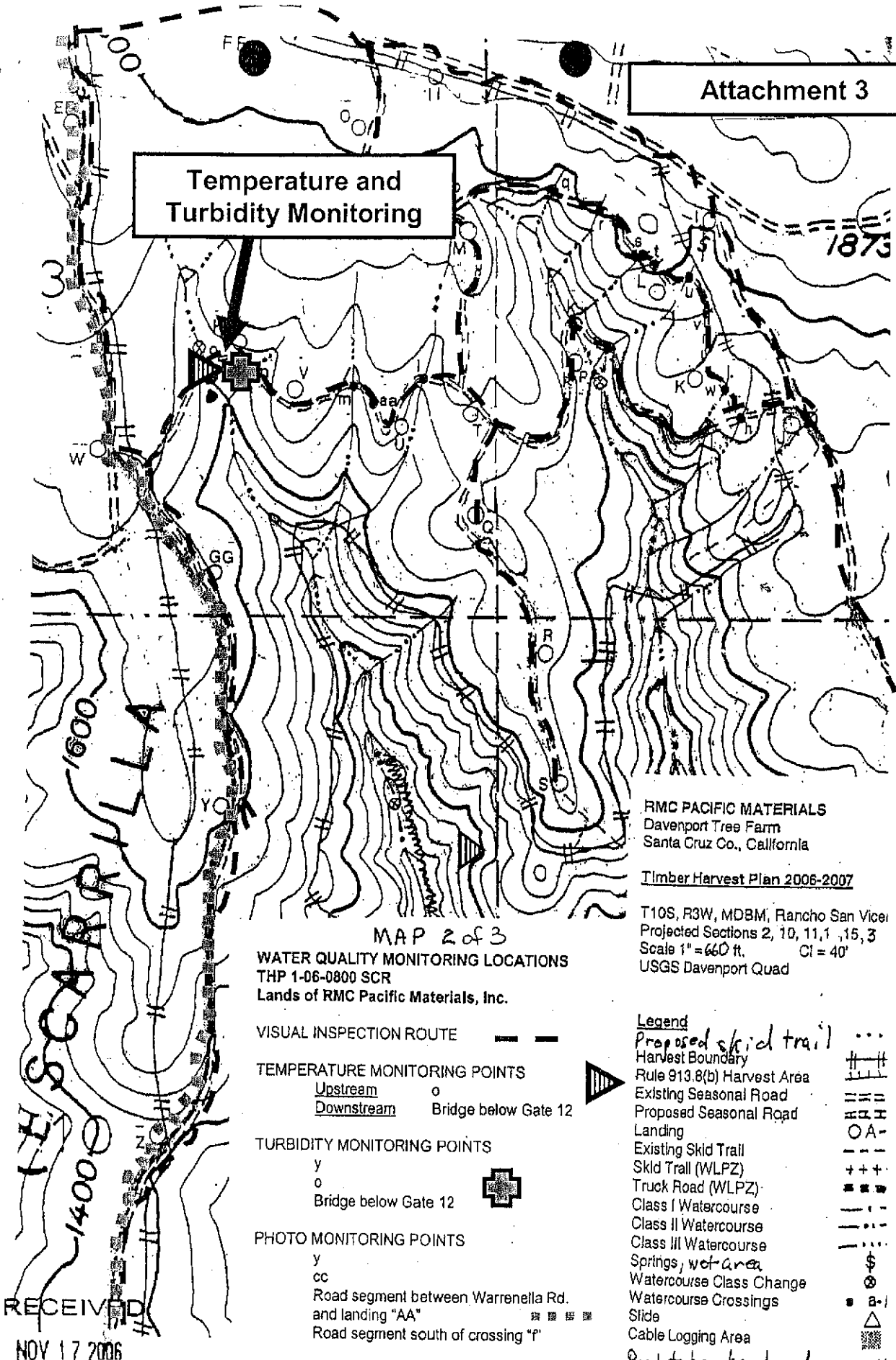
TEMPERATURE MONITORING POINTS  
 Upstream o  
 Downstream Bridge below Gate 12

TURBIDITY MONITORING POINTS  
 y  
 o  
 Bridge below Gate 12

PHOTO MONITORING POINTS  
 y  
 cc  
 Road segment between Warrenella Rd. and landing "AA"  
 Road segment south of crossing "f"

EHR high for entire site. This map is modified from original THP map submitted by Gary Paul.

Temperature and Turbidity Monitoring



RMC PACIFIC MATERIALS  
Davenport Tree Farm  
Santa Cruz Co., California

Timber Harvest Plan 2006-2007

T10S, R3W, MDBM, Rancho San Vicer  
Projected Sections 2, 10, 11, 15, 3  
Scale 1" = 660 ft. CI = 40'  
USGS Davenport Quad

MAP 2 of 3

WATER QUALITY MONITORING LOCATIONS  
THP 1-06-0800 SCR  
Lands of RMC Pacific Materials, Inc.

- VISUAL INSPECTION ROUTE
- TEMPERATURE MONITORING POINTS  
Upstream o  
Downstream Bridge below Gate 12
- TURBIDITY MONITORING POINTS  
y o  
Bridge below Gate 12
- PHOTO MONITORING POINTS  
y cc  
Road segment between Warrenella Rd. and landing "AA"   
Road segment south of crossing "f"

- Legend
- Proposed skid trail
  - Harvest Boundary
  - Rule 913.8(b) Harvest Area
  - Existing Seasonal Road
  - Proposed Seasonal Road
  - Landing
  - Existing Skid Trail
  - Skid Trail (WLPZ)
  - Truck Road (WLPZ)
  - Class I Watercourse
  - Class II Watercourse
  - Class III Watercourse
  - Springs, wet area
  - Watercourse Class Change
  - Watercourse Crossings
  - Slide
  - Cable Logging Area

RECEIVED  
NOV 17 2006

This map is modified from original THP map submitted by Gary Paul.

San Luis Obispo County, California

Timber Harvest Plan 2006-2007

T10S, R3W, MDBM, Rancho San Vicente,  
 Projected Sections 2, 10, 11, 15, 3  
 Scale 1" = 660 ft. CI = 40'  
 USGS Davenport Quad

New Landings

Legend

- Proposed Skid trail
- Harvest Boundary
- Rule 913.8(b) Harvest Area
- Existing Seasonal Road
- Proposed Seasonal Road
- Landing
- Existing Skid Trail
- Skid Trail (WLPZ)
- Truck Road (WLPZ)
- Class I Watercourse
- Class II Watercourse
- Class III Watercourse
- Springs
- Watercourse Class Change
- Watercourse Crossings
- Slide
- Cable Logging Area
- Road to be abandoned

- .....
- |||||
- ====
- |---
- A-HH
- +++++
- 
- 
- .....
- a-hh
- ▲
- 

WATER COURSE  
 T10S-06-  
 L of

# Attachment 3

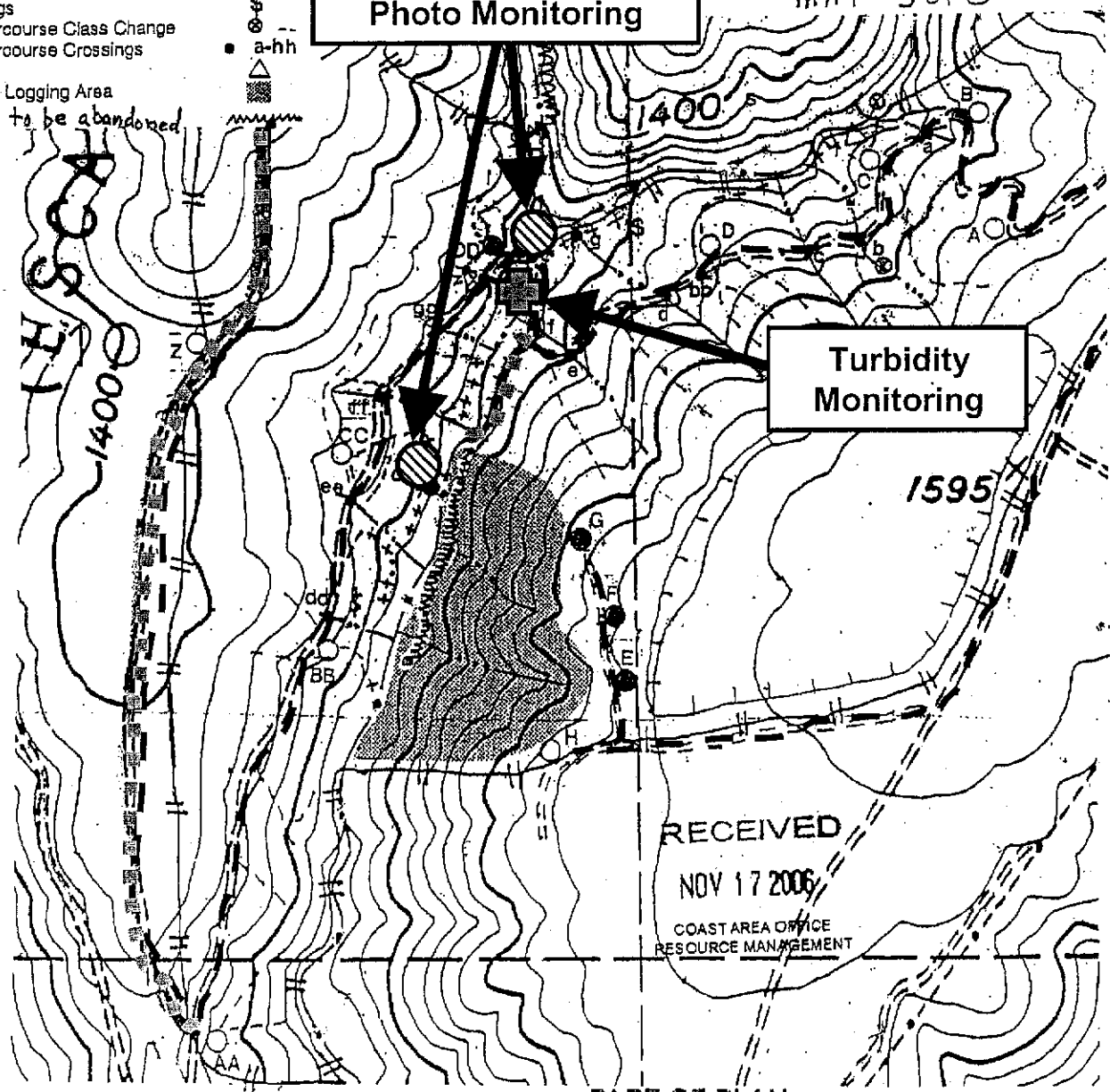
- VISUAL INSPECTION ROUTE
- TEMPERATURE MONITORING POINTS  
 Upstream ○  
 Downstream Bridge below Gate 12
- TURBIDITY MONITORING POINTS  
 y  
 o.   
 Bridge below Gate 12
- PHOTO MONITORING POINTS  
 y   
 cc  
 Road segment between Warrenella Rd.  
 and landing "AA"   
 Road segment south of crossing "T"

EHR high for entire site.

MAP 3 of 3

## Photo Monitoring

## Turbidity Monitoring



This map is modified from original THP map submitted by Gary Paul.