

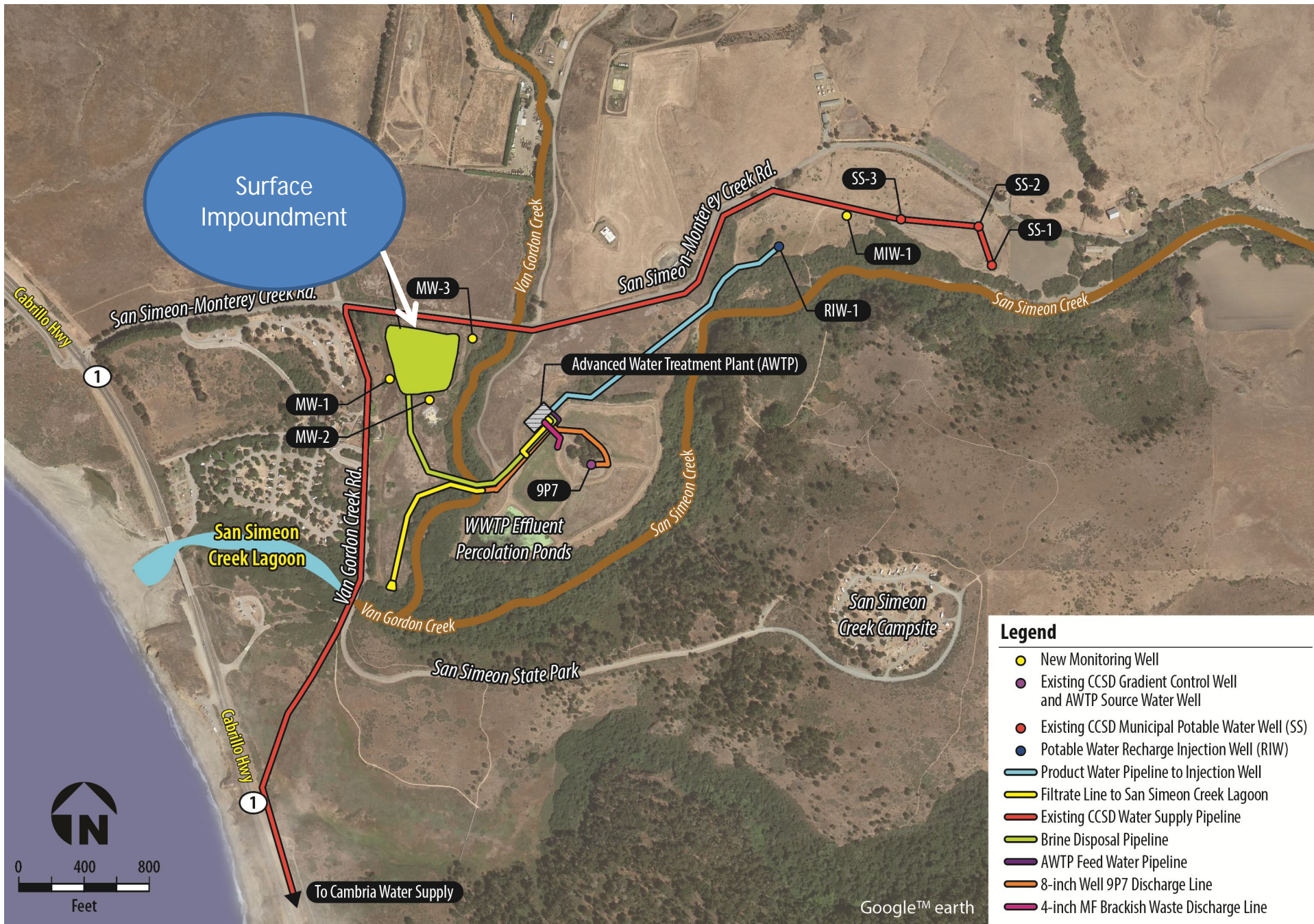
# Cambria CSD

## Emergency Water Supply Project: Class II Surface Impoundment

Central Coast Water Board

Ryan Lodge, Water Resource Control Engineer

November 14, 2014

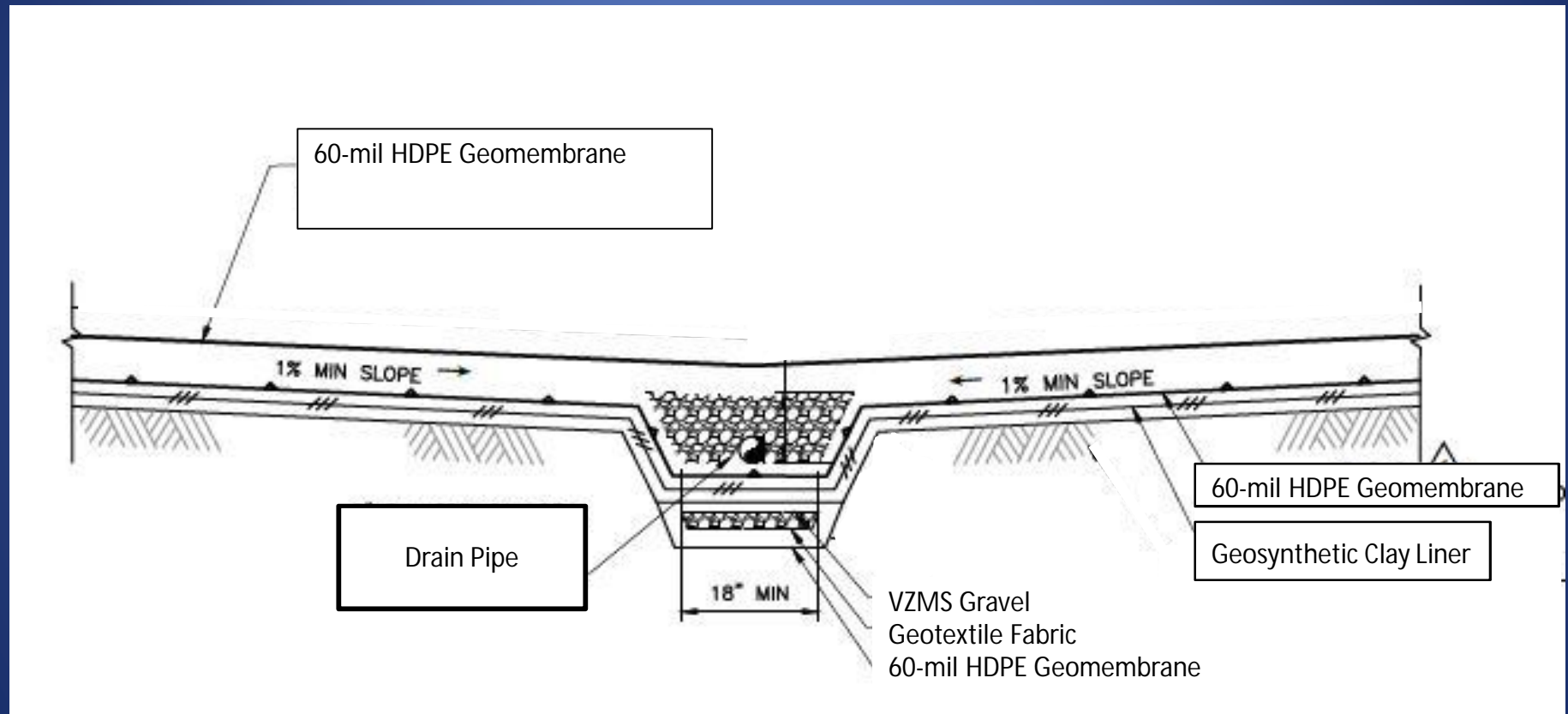


**Legend**

- New Monitoring Well
- Existing CCSD Gradient Control Well and AWTP Source Water Well
- Existing CCSD Municipal Potable Water Well (SS)
- Potable Water Recharge Injection Well (RIW)
- Product Water Pipeline to Injection Well
- Filtrate Line to San Simeon Creek Lagoon
- Existing CCSD Water Supply Pipeline
- Brine Disposal Pipeline
- AWTP Feed Water Pipeline
- 8-inch Well 9P7 Discharge Line
- 4-inch MF Brackish Waste Discharge Line



# Liner cross section













# Public Comments

- Comment: Surface impoundment will cause adverse impacts to wildlife.
- Response: Wildlife impacts will be addressed through the CEQA process

# Public Comments

- Comment: Surface impoundment cause human health issues.
- Response: All waste must be contained within the impoundment's lined area. Public is excluded from the impoundment area.



# Public Comments

- Comment: Brine in the impoundment will become hazardous.
- Response: District calculations indicate brine will not become hazardous.

# Public Comments

- Comment: Seismic and geologic conditions do not support siting a surface impoundment at the current location.
- Response: The surface impoundment complies with all Title 27 siting and stability requirements.



# Staff Recommendation

- Adopt Proposed Order No. R3-2014-0047 including Monitoring and Reporting Program No. R3-2014-0047

# Questions