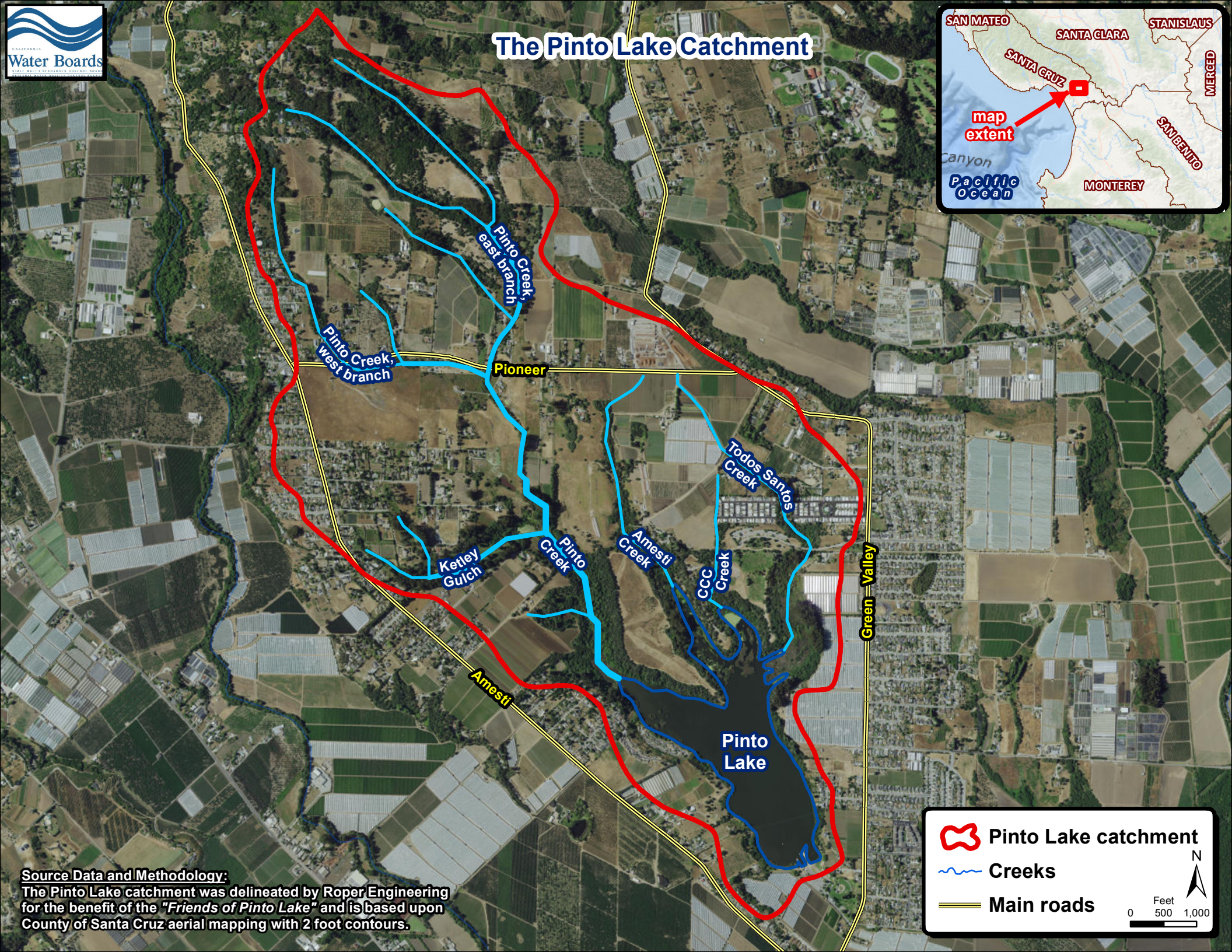








The Pinto Lake Catchment



Source Data and Methodology:
The Pinto Lake catchment was delineated by Roper Engineering for the benefit of the "Friends of Pinto Lake" and is based upon County of Santa Cruz aerial mapping with 2 foot contours.

-  Pinto Lake catchment
-  Creeks
-  Main roads


 Feet
 0 500 1,000